

STEIGER® ROWTRAC™



CASE IH
AGRICULTURE



4 is greater than 2.

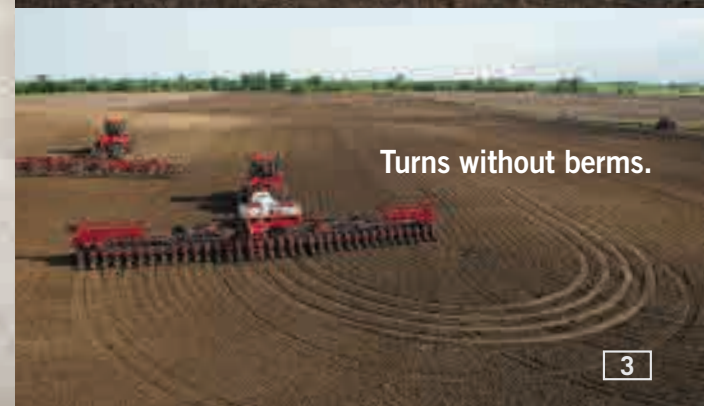


AT THE FOREFRONT OF INTUITIVE INNOVATION. STEIGER ROWTRAC SETS NEW INDUSTRY STANDARDS.

We paid attention. When you told us you wanted a Steiger with more flexibility for more jobs while maintaining the power and performance you've come to expect, we listened.

We started with a solid foundation. The proven technology of the Case IH Steiger Quadtrac® tractors is unparalleled in the industry. The Case IH four-track, positive-drive system minimises ground pressure and reduces compaction, improves traction and simplifies transport, allowing you to cover more ground in less time, even when field conditions are less than optimum.

Now, it's time to take the next step with the Steiger Rowtrac series. Leveraging our track technology leadership, we are providing more options and greater flexibility for producers with three new Case IH-designed and integrated row track models—400, 450 and 500. This is a game-changer and is another classic Case IH example of Efficient Power that's smart, simple to use, and offers one of the highest horsepower tractors commercially available in a row crop track machine to handle the largest implements on the market.



Turns without berms.



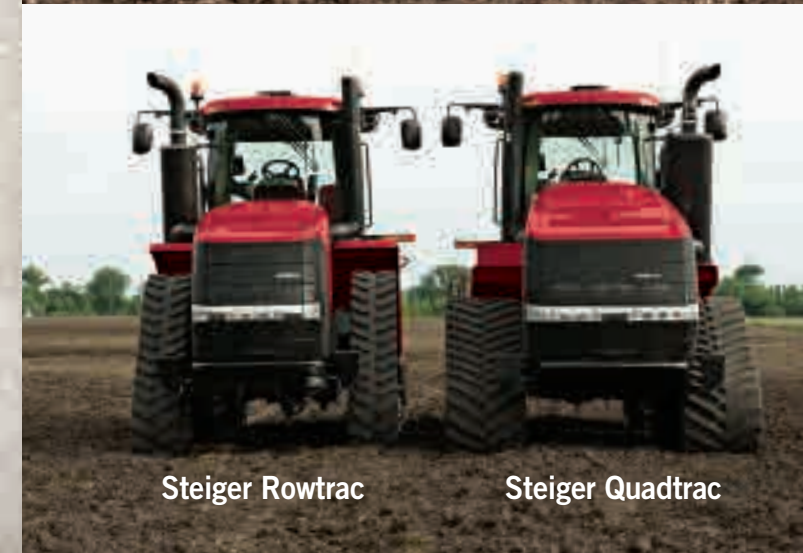
THE NEXT LEVEL OF EFFICIENT POWER AND PERFORMANCE. CONVENIENTLY PACKAGED FOR ANY SIZE OPERATION.

Steiger tractors are famous around the world for superior power and performance no matter what the conditions. The new Rowtrac 400, 450 and 500 tractors continue that heritage with convenient sizes and configurations to match every farm operation's high-horsepower needs.

Thanks to **best-in-class engine technology**, every Steiger Rowtrac tractor delivers power and responsiveness, even in the most demanding applications. Case IH FPT high-horsepower engines **burn an average of 10 percent less fuel than comparable Tier 3 models**. Plus oil change intervals have been lengthened from 300 to 600 hours.

As a result, you get powerful, smart, simple technology that saves time and money while still getting the Efficient Power you need for maximum performance.

Like other Steiger models, the Rowtrac machines have a **two-stage Power Boost** to provide extra power when needed with hydraulics, PTO, in transport and in other challenging conditions. And new features provide even more flexibility; the 428 litres per minute **parallel flow hydraulic system** for use with three-point hitch and PTO offers increased efficiency and adaptability for more planting and chaser bin applications.



Steiger Rowtrac

Steiger Quadtrac





COMFORT, CONVENIENCE AND MAXIMUM UPTIME. STEIGER ROWTRAC IS YOUR OFFICE AWAY FROM HOME.



UNMATCHED COMFORT & CONVENIENCE

Comfort is a high priority when you spend long days in the field, and Case IH delivers, thanks to input from our customers. The Steiger Surveyor® cab is the largest, most comfortable cab in the industry on a rowcrop chassis. And it's quiet so you can talk on your phone or multi task as needed to run your business. Other features include:

- Cab suspension is standard – no other equipment company offers this feature, which provides less wear and tear on the operator and the machine just like riding in your car on the highway
- Industry-leading 40-degree right-hand seat swivel gives you 180-degree full field of vision that keeps you from having to strain your neck all day
- Case IH MultiControl Armrest is intuitive and easy to use, keeping 85% of tractor functions in easy reach.
- The integrated and intuitive MultiFunction Handle is built into the armrest for fingertip control of key operations
- AFS® Pro 700 touchscreen color display is integrated into the armrest control so you can monitor and control the tractor, any ISO-compliant implement and AFS precision farming technologies
- Seamless integration of the new AFS 372 receiver and factory-installed AFS AccuGuide autoguidance for accuracy and ease of operation; and now, all AFS AccuGuide-equipped Case IH four-wheel-drive Steiger tractors can deliver full auto-guidance in reverse
- Right- and left-hand storage areas for increased efficiency and convenience

MAXIMUM UPTIME DELIVERED

Enjoy more productive days when you can get in the field faster and stay in the field longer with these conveniences:

- Easy maintenance – all engine, transmission and hydraulic/axle fluids are serviced from ground level
- Fluid site gauges on track roller bearings are at ground level, so you can spend more time working and less time climbing on the machine to perform simple maintenance
- No weighting or ballasting is necessary because you have exactly the correct weight needed to place power to the ground
- No flat tyres or tyre air pressures to check
- 600-hour oil change intervals save time and input costs
- Narrow undercarriage width simplifies loading and transport
- More convenience and simplicity with the new flow-compensated, quick-connect hydraulic valves that automatically compensate for temperature and flow, so less time is spent on manual adjustments
- The industry's heaviest frame – welded using 1/2-inch-thick steel to handle heavy tillage equipment and hold up better under tough conditions





STEIGER ROWTRAC GIVES PLANTS A BETTER CHANCE.

INNOVATION CONTINUES WITH NEW SUSPENSION, LONGER WHEELBASE
AND MORE POWER TO THE GROUND.

Beginning with the new Rowtrac design, Steiger tractors continue to lead the industry with more innovative design advancements that allow producers to grow crops in a more productive environment.

NEW, INNOVATIVE STEIGER ROWTRAC SUSPENSION

Although the Rowtrac undercarriage looks similar to the Quadtrac undercarriage, it is uniquely different. On each end of the roller beam, a mount controls pitch roll and yaw along with some vertical load. Two mounts in the center handle the primary vertical load. While the tractor is oscillating in the middle, each track moves independently. The exclusive Case IH design fits in a very narrow undercarriage width for row crop applications.

The Rowtrac is installed with a vertical suspension component that automatically adjusts to meet the demands of the tractor and its environment, allowing you to get into fields earlier to maximise yield potential.

LONGER WHEELBASE

We extended the wheelbase from 3.9m to 4m, so each track has even more ground contact resulting in better transfer of power to the ground. In addition, the unique four-track design delivers less ground pressure than other track designs reduced compaction and the most comfortable ride in the industry.

MORE POWER TO THE GROUND

The Case IH Quadtrac, positive-drive system is the only OEM-designed and integrated drive system of its kind in the world. With equal-sized, independent, oscillating drives on all four corners, you can get into fields sooner to maximise your opportunity for high-yielding crops. More power to the ground means more efficiency, especially in adverse field conditions. The exclusive Steiger Rowtrac can help you get an earlier start for many applications, including planting, seeding, side dressing, fertilising and seed bed preparation.



GREATER FLEXIBILITY

These models deliver the adaptability required for row crop and controlled traffic farming applications and the power needed to cover more ground with wider implements.

The Rowtrac series undercarriage features an advanced, new suspension system. Rubber “donuts” act like shock absorbers and keep the suspension from shifting side to side, so the tractor maintains on-row accuracy and the best ride in the industry—like driving your car on the highway. The new track suspension system allows you to operate in a wide variety of row crop applications.

Rowtrac Axle Width – Centre to Centre	Rowtrac Track Widths (in inches)
2m (80")	16, 18, 24, 30
2.2m (88")	16, 18, 24, 30
3m (120")	16, 18, 24, 30

LESS COMPACTION

Better traction further reduces compaction by minimising slippage on the soil surface. Compared to two-track systems, operators will see no ridging and berming in turns. In addition, each track drive oscillates up and down up to 10 degrees to maintain consistent ground contact no matter what the conditions. As a result, seeds can be planted sooner for better germination, earlier emergence and higher yields.



WHEN IT COMES TO COVERING MORE GROUND, WE'VE GOT YOU COVERED.



SPECIFICATIONS	STEIGER 400	STEIGER 450	STEIGER 500
POWER			
Type	Tier 2 – non SCR	Tier 2 – non SCR	Tier 2 – non SCR
Engine HP at Rated RPM	400 hp @ 2100 rpm	450 hp @ 2100 rpm	500 hp @ 2100 rpm
Maximum Engine HP	440 hp	495 hp	558 hp
PTO HP at Rated RPM (mfr est)	340 hp	385 hp	430 hp
Cylinders / Displacement	6 cyl. / 12.9L (787 cu. in.)	6 cyl. / 12.9L (787 cu. in.)	6 cyl. / 12.9L (787 cu. in.)
Number of Valves	24	24	24
Aspiration	Turbocharged (Wastegate) with Air to Air Aftercooling	Turbocharged (Wastegate) with Air to Air Aftercooling	Turbocharged (Wastegate) with Air to Air Aftercooling
ELECTRICAL			
Alternator	200 amp	200 amp	200 amp
Batteries	Two 12 volt, 1000 CCA	Two 12 volt, 1000 CCA	Two 12 volt, 1000 CCA
TRANSMISSION / PTO			
Transmission - Standard	Full Powershift 16F/2R w/16 Hi (25 mph / 40 kph)	Full Powershift 16F/2R w/16 Hi (25 mph / 40 kph)	Full Powershift 16F/2R w/16 Hi (25 mph / 40 kph)
PTO (optional)	1000 rpm – 1-3/4 in. shaft	1000 rpm – 1-3/4 in. shaft	1000 rpm – 1-3/4 in. shaft
AXLES			
Axle Diameter	4.5 in. (115 mm) Planetary	4.5 in. (115 mm) Planetary	4.5 in. (115 mm) Planetary
Axle Width (Spacing) - Standard / Optional	80 in. (2 032 mm) / 88 in. or 120 in. (2 235 mm or 3 048 mm)		
Wheelbase	160 in. (4 064 mm)	160 in. (4 064 mm)	160 in. (4 064 mm)
HYDRAULICS / HITCH			
Remote Valves - Standard / Optional	4 / Up to 8; 4 or 5 remotes with 3-pt. hitch only	4 / Up to 8; 4 or 5 remotes with 3-pt. hitch only	4 / Up to 8; 4 or 5 remotes with 3-pt. hitch only
Standard Hydraulic Pump (PFC)	42 gpm (159 L/min)	42 gpm (159 L/min)	42 gpm (159 L/min)
Standard High Flow Hydraulic Pump (PFC)	57 gpm (216 L/min)	57 gpm (216 L/min)	57 gpm (216 L/min)
Optional Twin Flow Hydraulic Pump (PFC)	56 gpm (212 L/min)	56 gpm (212 L/min)	56 gpm (212 L/min)
Total Tractor Hydraulic w/ High/Twin Flow Pumps	113 gpm (428 L/min)	113 gpm (428 L/min)	113 gpm (428 L/min)
Available Flow at Single Remote Valve	35 gpm (132 L/min)	35 gpm (132 L/min)	35 gpm (132 L/min)
3-point Hitch Category – Standard	Cat IV-N	Cat IV-N	Cat IV-N
Hitch Lift Capacity	20,000 lb. (9 071 kg)	20,000 lb. (9 071 kg)	20,000 lb. (9 071 kg)
CAPACITIES			
Fuel Tank	946 L	946 L	946 L
CAB			
Volume (Size)	130.8 cu. ft. (3.7 cu. m)	130.8 cu. ft. (3.7 cu. m)	130.8 cu. ft. (3.7 cu. m)
Glass	88.1 sq. ft. (8.18 sq. m)	88.1 sq. ft. (8.18 sq. m)	88.1 sq. ft. (8.18 sq. m)
DIMENSIONS			
Maximum Operating Weight	57,050 lb. (25 878 kg)		
Track Width	16 in. (406mm) / 18 in. (457mm) / 24 in. (610mm) / 30 in. (762mm)		



SAFETY NEVER HURTS!™ Always read the Operator's Manual before operating any equipment. Inspect equipment before using it, and be sure it is operating properly. Follow the product safety signs, and use any safety features provided. CNH Australia Pty Ltd reserves the right to make improvements in design and changes in specifications at any time without notice and without incurring any obligation to install them on units previously sold. Specifications, descriptions and illustrative material herein are as accurate as known at time of publication, but are subject to change without notice. Availability of some models and equipment builds varies according to the country in which the equipment is used.

©2013 CNH Australia Pty Ltd. All rights reserved. Case IH is a registered trademark of CNH America LLC. Any trademarks referred to herein, in association with goods and/or services of companies other than CNH America LLC, are the property of those respective companies. Printed in Australia. www.caseih.com

14AUSROW001