

**flexi** **coil**

SEEDING FOR SUCCESS







## INDEX

4-7	Flexi-Coil - Giving you what you need
8-11	Precision Agriculture
12-13	Air Carts
14-15	40 Series Air Carts
16-17	50 Series Air Carts
18-21	Precision Cultivators - ST820
22	Air Drills
22-23	5000HD Air Drill
24-25	5500 Air Drill
26-27	Ground Engaging Tools
28-31	Specifications

## FLEXI-COIL – GIVING YOU WHAT YOU NEED

### WHAT DO FARMERS REALLY NEED WHEN THEY BUY SEEDING AND TILLAGE PRODUCTS?

Reliability, accuracy, durability, flexibility and efficiency are key, so that is what we aim to deliver with all of our products. From our unrivalled air delivery system and down draft metering to our customisable configuration options, our features are all about creating products that do the job better, faster and more easily.

Carefully engineered components like the Easy Flow header mean Flexi-Coil air carts perform better, and our large-capacity, easy one-person auger operation is one of the biggest time-saving features of a Flexi-Coil air cart.







## AIR DELIVERY – HOW DOES IT WORK?

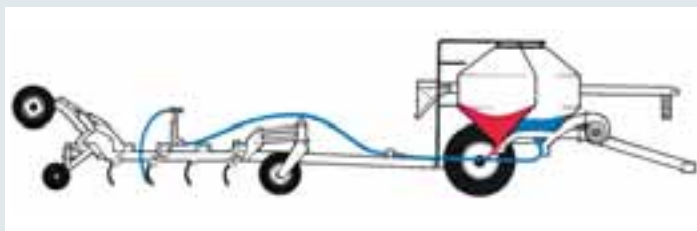
### AIR DELIVERY HELPS YOU PLACE SEED, FERTILISER AND OTHER PRODUCTS SIMPLY AND PRECISELY.

A basic air delivery system consists of an air cart, a series of hoses called an air distribution system and a seeding tool. The air cart directs the right amount of air and product into the distribution system, which in turn carries product to the seeding tool.

Because different farmers have different needs, Flexi-Coil allows you to place up to three separate distribution systems on the seeding tool. With one system you can single-shoot. With two, you can single- or double-shoot. And with three systems, you can single-, double- or triple-shoot.

## WHAT'S THE DIFFERENCE?

**SINGLE-SHOOT.** When one or more products are mixed together in a single distribution system and applied in one location, the system is called single-shoot. The most common combinations are applying seed alone, or applying a mixture of seed and fertiliser. Applying two types of fertiliser and blending them together while banding is also single-shoot.



**DOUBLE-SHOOT.** Means placing products separately in two locations. A common double-shoot application seeds while placing fertiliser below and to the side of the seed row.



**TRIPLE-SHOOT.** Adds another distribution system, making it possible to apply three products in a single pass. This set up requires an air cart with three tanks, such as the Flexi-Coil 3850 or 4350 models.



### DOWN DRAFT METERING

Every Flexi-Coil air cart is designed to provide you with accurate metering and efficient operation. Down draft metering is a major improvement over less advanced designs, with three main innovations designed to improve accuracy:

- An agitator bar that prevents bridging for a constant density and supply of product to the meter roller.
- Product divided into equal sections: one for each primary line in the distribution system.
- Air and product mixed in a parallel flow for a smooth transition from the meter box to the distribution system.



The improved blend of air and product results in gentle, precise product metering right from the start.

### OPTIONS TO SUIT YOU

Flexi-Coil makes it easy to create the design that matches your farming style. You can vary the width of the bars, alter the tyne spacing, and even decide on the order of the tractor, cultivator bar and air cart. All models are available in a tow-behind or tow-between configuration, so you can choose which is best depending on your needs and your preferences. Choose tow-between for rolling terrain, clay soils and a field finish without cart wheel tracks. Choose the tow-behind model for complete visibility of the seeding tool to monitor residue flow and easier loading when using a large tractor-trailer. All models are also available with mechanical or variable rate drive.



Versatility is built-in, so you can choose the roller size you need to suit the seed size and rate of the job.

- Extra fine rollers are used for application of small diameter products at low rates.
- Fine rollers are used for most applications including cereal grains, and for metering moderate rates of fertiliser.
- Coarse rollers are used for large seeds and for the application of high rates of fertiliser.
- Extra coarse rollers are used for very large, fragile seeds and for the application of very high rates of fertiliser.

With clever engineering and a variety of flexible options, Flexi-Coil products are perfectly matched to your needs.





## PRECISION AGRICULTURE

Precision agriculture is becoming ever more important to farmers who want to get the most from their land. Flexi-Coil is leading the way with a whole range of innovations to help you seed and fertilise where you need to and how you need to. All variable rate Flexi-Coil air carts have the ability to run prescription maps to automatically control seed and fertiliser applications. Ensuring seed and fertiliser are placed at the right rates and correct depth means your crop has the best possible chance right from the start. Flexi-Coil gives you a wide range of capabilities for precision farming.

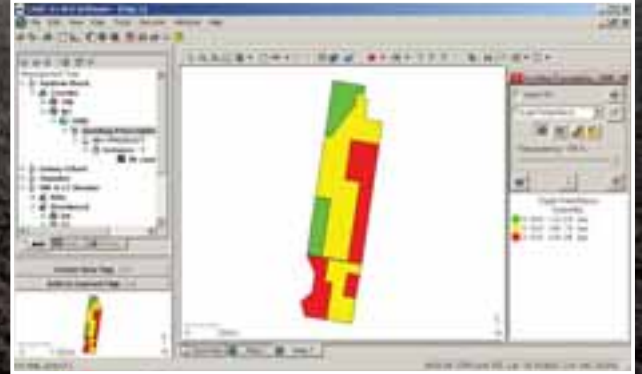
With our variable rate metering systems you can set and monitor application rates precisely, from the comfort of the tractor seat, while our air carts accurately distribute fertiliser and seed at varying rates. And our FlexControl electronics make it easier to manage the control of your air cart. The ability to run prescription maps to automatically control seed and fertiliser applications comes standard on the new FlexControl III and with the addition of a Task Controller for the Flexcontrol II electronics. The Flexi-Coil air cart is designed to grow with you as you add to your rotation.





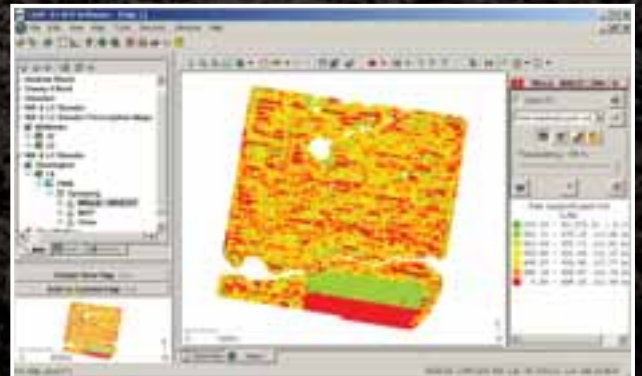
### **PRESCRIPTION MAPPING**

Compatibility is built in with the FlexControl III system, so you can manage harvester information your way. It works with almost any GPS receiver or guidance system on the market and prescription maps can be created using Case IH AFS or New Holland PFS software that comes standard with harvesters. This software can also take other types of prescription maps and convert them for use in Flexi-Coil variable rate air carts and can be used to manage all yield mapping, guidance data, spatial mapping, prescription maps, farm maps, logging files across CNH equipment platforms and most other Brands.



### **WORK SWITCH FOR HEADLAND CONTROL**

The work switch turns the implement and prescription logging on and off when making headland turns or when implements are raised or lowered. This ensures no loss of product, accurate data recording and improved operator reliability.





### FLEXCONTROL

You know which areas of your field could be managed better by applying different rates, populations or seed varieties. With FlexControl electronics you have the built-in ability to make these changes on-the-go.

FlexControl lets you take full advantage of variable rate metering and keeps you informed about the performance of your seeding system.

Easy rate setting is standard with FlexControl and the system always tracks the area you've covered on each field, and the total area with each machine.

The air cart read out tells you ground speed, fan RPM and application rates for each tank and alarms warn you of low tank levels or sensor failure. FlexControl makes optimal farming practices simple.

FlexControl's standard features let you start right away, or Flexi-Coil can offer customised solutions for automated precision agriculture systems.

The latest version of the system, FlexControl Monitor, offers an easy-view colour 25.4 cm (10 inch) touch screen. It is ISO 11783 compliant and lets you choose which information you want displayed. The system offers full compatibility between machines that meet the ISO 11783 standard, including Case IH and New Holland tractors, harvesters, sprayers and planters including guidance and monitoring machine functions.

The system is upgradeable when new software is developed, so you don't have to worry about losing time to update to a new system or learning how to use it, and it's the fastest and most responsive variable rate metering system on the market.

FlexControl Monitor lets you vary your seed rates on the go, build in operator instructions like calibrations and settings, and receive pop up warning and information. Animated graphics make it easy to see what's happening – for instance, you might see meter rollers turning or bin levels reducing.

Flash card compatibility makes it easy to transfer information to and from the monitor for storing and backing up your operation records.





## METERING

You want to have control over how much seed or product you apply and at what rate. Whether you choose mechanical or variable rate metering, Flexi-Coil's products are designed for precision and accuracy.

The 40 and 50 Series mechanical drive air carts feature Flexi-Coil's exclusive slide adjustment for infinite rate setting. A clean, simple slide adjustment lets you select the exact rate you want, without changing sprockets or chains, while an air damper control at each meter lets you set air flow for accurate delivery of products with various sizes and weights. In-cab control is also available as an option.

Mechanical ground drive metering does not rule out precision agriculture – FlexControl will tell you where to set the slide, ensuring your Flexi-Coil mechanical ground drive product is as accurate as possible. There's no need for rate charts with FlexControl!

The 40 and 50 Series variable rate air carts make rate setting convenient and give greater control for on-the-go precision.

Variable rate metering gives you precision in-cab control of product rates. The application rate is controlled electronically, so you can select the rate you want and change it on-the-go to match field conditions. The roller speed is controlled electronically from the console. Each meter has an independent drive for precise metering and fast reaction to rate changes.

Flexi-Coil air carts equipped with variable rate metering let you set application rates from the tractor seat with FlexControl. As conditions change you maintain precision by adjusting rates on-the-go with the press of a button. When you choose to automate the process, the variable rate air cart is ready for site-specific farming.



## AIR CARTS

Flexi-Coil offers two series of air carts – the 40 Series and 50 Series – to suit your needs. All of our air carts are designed for ease of use, safety, versatility and fast filling and emptying.

Our 40 Series air carts bring you easy operation, convenient in-cab control with FlexControl and a variety of tank sizes to suit your needs. You can tow-behind or tow-between and variable rate metering lets you set product rates from the tractor seat.

The attached auger is easy to operate and allows one person to quickly fill or empty the air cart, while the 40 Series stairway and platform provide easy access to the tank lids.

Our 50 Series air carts are designed for growers who need large capacity and diverse metering capabilities. Like the 40 Series, they include FlexControl electronics and easy filling and emptying with a large capacity auger. Two or three integrated tanks let you apply several products separately, blend on-the-go or use full capacity with a single product. You can control the air flow to each meter for fine-tuned product delivery. The 50 Series air cart is available with variable rate metering or mechanical drive.













## 40 SERIES

### 2340 AIR CARTS

The 2340 model has a capacity of 230 bushels (8,105 litres) with tanks split 60/40 to carry two products separately.

The 40 series features a wide stance and tyre options for flotation and stability in all terrains. This versatility makes it easy to match an air cart with your farming system. The standard rear wheel track is 3.05 m.

The 203mm auger option lets you load the 40 Series very quickly. Controls are conveniently located at both the top and bottom, with a rotary valve for varying auger speed. Balanced for easy one-person operation, the auger also swings underneath the air cart for unloading.

The stairway and platform provide safe, comfortable access to the tank lids for filling or inspection.





## 50 SERIES

### 2850, 3350, 3850 AND 4350 AIR CARTS\*

If you want the ultimate in control and flexibility, the 50 Series is perfect for you.

With two and three-tank options, you'll get a great combination of versatility and capacity. The 2850 and 3350 air carts are both two-tank models, with total tank capacities of 280 bushels (9,866 litres) and 330 bushels (11,628 litres) respectively.

\*Not all sizes available in every region.

The 3850 and 4350 models give you three integrated polyethylene tanks so you can choose to apply three different products at once, or apply two at once using two tanks for one product. Or you may simply want the additional capacity when applying a single product. Three tanks means three times the options for applying seed, fertiliser or granular products in a single pass.

The combined capacity of the three tanks is 380 bushels (13,390 litres) on the 3850 and 430 bushels (15,152 litres) on the 4350 air cart.





A big auger for the big cart lets you fill faster than ever. The 50 Series is equipped with a 254mm auger which has additional top controls and is balanced for fast, one-person operation.

Tread softly in the field with tyres to match your flotation needs.

A dual walking caster on the front of the tow-behind cart is standard. This walking beam design adds stability while dual wheels improve flotation.

Air velocity sensors on the 50 series models allow the operator to monitor changes in air density. In the early morning air is heavy and carrying the product is easier; in the afternoon the air is thinner – the sensor lets you know what's happening so you can consider the impact on how product is carried through the distribution system.

True tank level monitoring is available thanks to ultrasonic sensors, and adjustable optical sensors let you set an alarm to go off when levels are low.

The 50 Series offers robust products that are powder coated for corrosion and UV resistance, are designed for easy cleaning and maintenance and safe, easy access to the top of the tank.







## PRECISION CULTIVATORS

### FLEXI-COIL ST820 PRECISION TILLAGE

Flexi-Coil's ST820 cultivator combines solid construction, durability and flexibility with incredible accuracy and depth control. Its modular design allows for expanding widths, with three-section and five-section base models offering working widths between 7.6 to 18.9m.

A flexible frame and floating hitch allow the ST820 to provide exceptional contour-following capability – you can closely follow the rise and fall of the ground for consistent depth accuracy and heavyweight construction helps it penetrate the hardest soil.

Take advantage of the ST820's land-following precision by attaching an air cart for seeding and fertilising.

The ST820 has an 81 cm (32 inch) high clearance frame height and careful placement of wheels to the rear of the frame to allow heavy residue to flow through without plugging. The convenient depth setting combined with single cylinder depth control and parallel lift give the ST820 precision in tough conditions.





### THREE-SECTION AND FIVE-SECTION MODELS

The ST820 is available in three or five-section models with 229mm or 305mm (9" or 12") row spacing. The three-section model ranges in width configurations from 7.6m – 13.4m (25' to 44'). Depending on the working width configuration, the ST820 ranges in transport width from 5.7m – 6.6m (18'8" to 21'8") and ranges in transport height from 3.8m – 5.5m (12'6" to 17'11").

The five-section model ranges in width configurations from 13.1m – 18.9m (43' to 62'). Depending on the width configuration you choose, the ST820 ranges in transport width from 5.7m – 6.6m (18'8" to 21'8") and ranges in transport height from 4.2m – 5.1m (13'10" to 16'10").

Options for the ST820 include an air distribution package for fertilising and seeding, field hitch mounts for air-carts, mounted harrows, mounted press wheels, mounted press wheel scrapers, single or dual end-markers, and a rigid-mount single point tillage hitch.



### PRESS WHEELS AND HARROWS

Seed how you want with an ST820. Use detachable mounted harrows for solid seeding, or poly press wheels for row seeding. Flexi-Coil's mounted harrow is available in a three or four row finger configuration and has been designed for durability and easy adjustment. A telescoping mount arm allows for quick removal and the harrow is fully adjustable for pitch, height and pressure. Harrows are available in 1.4m and 1.8m widths.

Press wheel mount arms are interchangeable so that mounted press wheels can be simply detached and replaced with mounted harrows using only a quick-pin.

### FLEXIBILITY FOR DURABILITY AND ACCURACY

The ST820 centre section and wings are constructed with diagonal hinge lines which allow the frame to follow contours of the land and minimise frame stress.

The ST820 responds to changing contours instead of stressing frame members and welds—and the result is a longer-lasting frame. A floating hitch gives improved front-to-back, land-following capability.

Land-following capability is important for depth accuracy in uneven terrain. The ST820 frame follows the contours of hills, ravines and washouts to maintain the depth you choose. Durable, high-density polyurethane discs cushion the frame and absorb movement as the machine flexes.



### DEPTH CONTROL – ACCURATE SEED DEPTH UNDER ANY CONDITION

The land-following capability, heavy weight construction and easy depth setting of the ST820 precision tillage make it an ideal seeding tool. With air distribution package the ST820 places seed accurately in uneven ground and high residue conditions.

Single cylinder depth control provides accuracy, reliability and low maintenance, and the depth for the entire machine is set at a single point. A mechanical linkage translates the hydraulic lift to the walking axles so the depth stays constant across the entire machine.

Superior flotation provides stability in field and transport positions. Walking beams are placed well to the rear of the machine for consistent depth control and residue clearance. Parallel lift between the front casters and the rear walking beams keeps the frame level, whatever the working depth.







### 75 PACKER BAR

The 75 coil packing system gives excellent seed-to-soil contact and seals the surface to retain moisture. Wind and water erosion are controlled by the unique herringbone pattern and clods of dirt left on the surface.

Widths from 25 to 62 feet (7.62 to 18.90 meters) are designed to match the seeding tool. To transport, the hydraulic lift raises the packers completely off the ground and places the wings in a safe, over-center position.

The durable design provides dependable performance.







## AIR DRILLS

Flexi-Coil's air drills are adjustable, flexible and efficient. The 5000HD and 5500 air drills give you multiple bar configurations for adaptable row spacing, four-row tynes, and rubber and steel packing systems that improve the ride and apply less packing pressure in heavy, sticky soil conditions. And of course, they provide great depth control and placement accuracy. Single point depth setting makes it easy to set exact, repeatable seed depth in every field.



### 5000HD AIR DRILL

The 5000HD air drill lets you put seed and fertiliser in the right place for faster, more even germination. It delivers accurate seed placement with on-row packing. With a flexible frame and four bar configuration, the 5000HD brings precision to a wide variety of seeding conditions.

An 81 cm frame clearance lets heavy residue flow through the drill. The frame is carried by the press wheels at the rear and the casters on the front, so there are no wheels in the frame to interfere with residue flow.

Optimum flotation is provided by dual walking casters, which are standard on the centre section of larger models and optional on wing sections. There are multiple press wheels and closing options to match the drill to your specific field conditions. Quick connects let you hook up to seeding or banding tools quickly and easily.







Rubber press wheels are available in three, four and five-and-a-half inch sizes. The flatter profile rides over a wider area for less packing pressure, just right for soils where too much packing can be a problem. Three inch rubber press wheels can be used with knife openers or when spreading seed up to three inches, or for narrow double shoot applications.

Four inch rubber press wheels are effective for many applications where seed is spread up to four inches, while five-and-a-half inch rubber press wheels offer on-row packing in wide seed spread applications.

Parallel linkage between the front casters and the rear press wheels keeps the frame level and maintains seeding depth in changing conditions. Unmatched depth accuracy is delivered by a flexible frame which allows openers to follow the contours of the ground.





## 5500 AIR DRILL

Available in 18.3 and 21.3m widths, the Flexi-Coil 5500 air drill features a patented two-piece wing, with simple, parallel-circuit hydraulics. This design minimises stress on the framework while ensuring depth accuracy.

“Split-row” tyne pattern configurations in spacings of 228mm or 305mm (10 or 12 inches) give you a smooth field finish with conventional C-shanks using the same proven trip design.

### REVOLUTIONARY FOLDING SEQUENCE

The two-piece wing design allows the 5500 to achieve a reduced profile for easy transport. The unit folds down to just 5.4 metres wide, making it just 200mm wider on each side than many tractors. Transport height is just 4.1 metres. Transport is safer, faster and less stressful.

### WALKING PNEUMATIC TYRE

The Flexi-Coil 5500 is offered with gang-style press wheels in semi-pneumatic, steel or walking beam pneumatic. The walking pneumatic tyre is available only on this model.





### VARIABLE PACKING PRESSURE

A patented variable packing pressure system allows operators to adjust packing pressure from field-to-field. Pressure of the pack wheels can be adjusted to reduce the pressure by as much as 30 per cent.

### FLEXIBLE FRAME

Flexibility dissipates frame stress for more durability than traditional welded joints. Where the frame flexes, durable self-lubricating joints with chrome pins and polyurethane pads add lasting performance. Exceptional land-following flexibility provides precise seed placement.

Each wing on the 5500 is attached to a collective rockshaft with simple, parallel circuit hydraulics, allowing each wing/press wheel combination to follow the ground. This minimises stresses in the framework and ensures precise seed placement.

The 5500 achieves exact and repeatable sowing depth thanks to a unique configuration. Two front ranks follow the contours of the land at a depth set by the nearby caster assemblies while two rear ranks follow the ground on which the press wheels run. Single-point depth setting provides simple control of the depth across the entire machine.



## GROUND ENGAGING TOOLS

Flexi-Coil has developed a wide range of ground engaging tools to help you customise products to suit your requirements.

### STEALTH OPENER

The Stealth™ opener is a modular system that adds versatility to your row seeding. A choice of tips or attachments can be mounted on the main body for a customised opener system.

Replaceable tips let you choose the right opener for your application and help you manage wear. Knife tips are used for both single- or double-shooting and include the heavy duty tip with carbide points. Spread tips are for single-shoot only.

Stealth openers are manufactured from Austempered Ductile Iron (ADI) for strength and consistency.

### STEALTH SINGLE SHOOT

The Stealth opener works for both narrow row and spread row seeding styles.

#### KNIFE TIPS

- Low soil disturbance.
- Very narrow rows of 22 to 25mm (7/8 to 1 inch).
- For use with any press wheel.
- Heavy duty carbide tips to match soil conditions.



#### SPREAD TIPS

- Designed for low disturbance seeding.
- Wider product spread allows more fertiliser to be placed with the seed.
- Spread tips are available in 75, 100, 125mm (3, 4 or 5 inch) sizes.
- For use with press wheels that match row widths.







### STEALTH DOUBLE SHOOT

Stealth double-shoot attachments bolt on to the rear of the main body and allow separate placement of seed and fertiliser in one pass. This separate placement allows for higher fertiliser application rates without damaging the seed.

### SIDE BAND

- Places seed 25mm (1 inch) above and 25mm (1 inch) to the side of the fertiliser.
- The wing design forces soil into the fertiliser trench to provide separation from the seed.
- Can be used with all press wheels.

### PAIRED ROW

- Seed is placed 25mm (1 inch) above and 25mm (1 inch) to both sides of the fertiliser.
- Available in HS format for heavy soils and gumbo, and in LS format for light soils and sandy loam.
- Designed to force soil into the fertiliser trench to provide separation from the seed.
- Recommended for use with press wheels at least 75mm (3 inches) wide.
- Available with carbide for longer life.

### SWEEPS

For weed control during the seeding pass, you can seed with sweeps. Seed and fertiliser can be placed in a narrow row or broadcast, depending on your packing choice.

Narrow row sweep provides a seed row that matches the width of the press wheels used.

Sweep and broadcast is for use with bolt-on sweeps. It provides a uniform spread of seed and fertiliser across the width of the tool and is recommended for full width coil packing.



(The information on openers and seed boots in this section is meant as a general guide in average soil and moisture conditions. Flexi-Coil cannot accept liability for crop loss or damage caused by incorrect placement or excessive rates).

# 40 & 50 SERIES AIR CART (METRIC SHOWN IN BRACKETS)

Model	2340 2 Bin	2850 2 Bin	3350 2 Bin	3850 3 Bin	4350 3 Bin
<b>Capacities</b>					
Total	231bu(8,140L)	280bu (10,103L)	330bu(11,528L)	380bu (13,390L)	430bu (15,153L)
Tanks	2	2	2	3	3
Splits	136/85	118/169 (TBH)	142/186 (TBH)	118/93/169 (TBH)	142/102/186 (TBH)
		169/118 (TBT)	186/142 (TBT)	169/93/118 (TBT)	186/102/142 (TBT)
<b>Dimensions</b>					
Ground Clearance	21" (53cm)	25" (64cm)	25" (64cm)	25" (64cm)	25" (64cm)
Height	13' 3" (4m)	14'11" (4.3m)	15'3" (4.65m)	14' 2" (4.3m)	15' 3" (4.65m)
Width	12' 1" (3.7m)	12'6" (3.81m)	12'6" (3.81m)	12' 6" (3.81m)	12' 8" (3.86m)
Tow Behind Length	18' 1" (5.8m)	25'4" (7.72m)	25'4" (7.72m)	29' 3" (8.9m)	28' 3" (8.61m)
Tow Behind Weight	8,180lb (3710kg)	10,013lb (4546kg)	10,052lb (4569kg)	11,240lb (4881kg)	11,090lb (5040kg)
Tow Between Length	20' 10" (6.4m)	26'4" (8.0m)	26'4" (8.0m)	29' 3" (8.9m)	29' 4" (8.94m)
Tow Between Weight - empty	7,055lb (3300kg)	10,013lb (4546kg)	10,052lb (4569kg)	10,820lb (4908kg)	11,090lb (5040kg)
<b>Tyres</b>					
Rear Axle	3.5"	4.5"	4.5"	4.5"	4.5"
Rear Tyres	18.4x26 tractor lug	30.5x32 tractor lug	30.5x32 tractor lug	30.5x32 tractor lug	30.5x32 tractor lug
Front Axle	Dual castor	Dual castor	Dual castor	Dual castor	Dual castor
Front Tyres (TBH only)	16.5x16.1 tractor lug	21.5x16.1 tractor lug	21.5x16.1 tractor lug	21.5x16.1 tractor lug	21.5x16.1 tractor lug
<b>Manifold</b>					
Single Shoot	Standard	Standard	Standard	Standard	Standard
Double Shoot	Double*	Double shoot*	Double shoot*	Double shoot*	Double shoot*
Number of Primary Lines Max.	8	8	8	8	8
<b>Air System</b>					
Fan	Down draft with individual tank air flow control				
	Single Fan	Dual Fan	Dual Fan	Dual Fan	Dual Fan
<b>Meter System</b>					
Mechanical Drive					
Ground Driven	Standard	Standard	Standard	Standard	Standard
Meter Box Slide					
Setting Control	Standard	Standard	Standard	Standard	Standard
In Cab Shut Off	Standard	Standard	Standard	Standard	Standard
<b>Variable Drive</b>					
Electro-Hydraulic Drive	Standard	Standard	Standard	Standard	Standard
In Cab Control	Standard	Standard	Standard	Standard	Standard
Meter Rollers	Xtra fine, Fine, Coarse, Xtra Coarse (select when ordering)				
Auger	8"	10"	10"	10"	10"
<b>Flex Control Electronics</b>					
Read Out	FLEXCONTROL III	FLEXCONTROL III	FLEXCONTROL III	FLEXCONTROL III	FLEXCONTROL III
	Alphanumeric: units of measurement displayed in US, imperial or metric				
Sensors	Ultrasonic tank level, infrared low bin, air velocity sensors, ground speed, fan speed, meter rate				
Lighting	Field and auger lighting standard on the 50 series				
<b>Options</b>					
	Field and auger lighting (40 Series)				
	Remote air control				
	Oil cooler (2 required for dual fan)				
	Modular front axle for 40 series (controlled traffic)				
	Single fan option for 2340 Air Cart				
	Work switch for headland control				

\*Requires one intermediate manifold



# ST820 PRECISION TILLAGE (METRIC SHOWN IN BRACKETS)

3-Section Base Models	25 ft (7.6m)	31 ft (9.5m)	34 ft (10.4 m)	37 ft (11.3 m)	40 ft (12.2 m)
<b>Dimensions - Transport</b>					
Length	25 ft 4 in (7.7 m)	25 ft 4 in (7.7 m)	26 ft 2 in (8.0 m)	25 ft 4 in (7.7 m)	26 ft 2 in (8.0 m)
Height	11 ft 6 in (3.5 m)	14 ft 3 in (4.3 m)	14 ft 3 in (4.3 m)	17 ft (5.2 m)	17 ft (5.2 m)
Width	18 ft 8 in (5.7 m)	18 ft 8 in (5.7 m)	21 ft 8 in (6.6 m)	18 ft 8 in (5.7 m)	21 ft 8 in (6.6 m)
Weight*	5390 kg (11,883lb)	5977 kg (13,171lb)	6,274 kg (13,832lb)	6,825 kg (15,047lb)	7,141 kg (15,743lb)
<b>Number of Shanks - Spacing</b>					
7.2 in (18.3 cm)	43, 47	53, 57	58, 62	63	68
9 in./ 9 in. alternate (22.9cm)	35, 37, 39	43, 45, 47, 45	47, 49, 51	51, 53, 55	55, 57, 59
12 in (30.5 cm)	27, 29	33, 35	36, 38	39, 41	42, 44
<b>Tyres</b>					
Wings (all tyres)	9.5Lx15(D)	9.5Lx15(D)	9.5Lx15(D)	9.5Lx15(D)	9.5Lx15(D)
Centre Section: Castors	9.5Lx15(D)	9.5Lx15(D)	9.5Lx15(D)	9.5Lx15(D)	9.5Lx15(D)
Walk beam	11Lx15(D)	11Lx15(D)	11Lx15(D)	11Lx15(F)	11Lx15(F)

5-Section Base Models	43 ft (13.1 m)	46 ft (14.0 m)	52 ft (15.8 m)	58 ft (17.7 m)
<b>Dimensions - Transport</b>				
Length	25 ft 4 in (7.7 m)	26 ft 2 in (8.0 m)	26 ft 2 in (8.0 m)	26 ft 2 in (8.0 m)
Height	13 ft 10 in (4.2 m)	13 ft 10 in (4.2 m)	16 ft 10 in (5.1 m)	16 ft 10 in (5.1 m)
Width	18 ft 8 in (5.7 m)	21 ft 8 in (6.6 m)	21 ft 8 in (6.6 m)	21 ft 8 in (6.6 m)
Weight*	8,430 kg (18,585lb)	8,768 kg (19,330lb)	9,574 kg (21,107lb)	10,200 kg (22,487lb)
<b>Number of Shanks - Spacing</b>				
7.2 in (18.3 cm)	73, 77	78, 82	88, 92	98, 102
9 in./ 9 in. alternate (22.9cm)	59, 61, 63	63, 65, 67	71, 73, 75	79, 81, 83
12 in (30.5 cm)	45, 47	48, 50	54, 56	60, 62
<b>Tyres</b>				
Wings (all tyres)	9.5Lx15(D)	9.5Lx15(D)	9.5Lx15(D)	9.5Lx15(D)
Centre Section: Castors	9.5Lx15(D)	9.5Lx15(D)	9.5Lx15(D)	9.5Lx15(D)
Walk beam	235/75 R17.5	235/75 R17.5	235/75 R17.5	235/75 R17.5

## All models

<b>Sizes available</b>	
	25 to 62 feet (7.6 to 18.9 m)
	The ST820 can be configured for widths from 25 to 62 feet, depending on row spacing, trip break out.
<b>Trips &amp; Shanks</b>	
	350 lb , 1" x 2", 1 3/4" bolt spacing fit 470 sweeps on 7.2", 9" spacings
	550 lb, 1" x 2", 2 1/4" bolt spacings fit 500 sweeps on 7.2", 9" or 12" spacings
	650 lb, 1 1/4" x 2", 2 1/4" bolt spacing fit 500 sweeps on 12" spacing
<b>Options</b>	
	Mounted 3 bar harrows
	Work switch for air cart
	Mounted press wheels
	Air Package - single or double shoot (tow between or tow behind)
	Mounted 4 bar harrows
	End marker (single or dual up to 46')
	Trip shim kit
	Rear hitch for towing implement
	Mud scrapers
	Field Hitch Mount (For Air Cart)
	Furrow closers
<b>Note</b>	
	Mounted 3 bar harrows
	Work switch for air cart
	Ground engaging tools are required for operation and are not included in specs.

\*Maximum weight (without options or ground engaging tools)

## 5000HD AIR DRILL SPECIFICATIONS (METRIC SHOWN IN BRACKETS)

Model Width	27' (8.2m)	33' (10.0m)	39' (11.9m)	45' (13.7 m)	51' (15.5m)	57' (17.4 m)
<b>Dimensions - Transport</b>						
Length	29Ft. (8.8m)	29Ft. (8.8m)	29Ft. (8.8m)	29Ft. (8.8m)	29Ft. (8.8m)	29Ft. (8.8m)
Height	11.5' (3.5m)	14.5' (4.7m)	17.5' (5.3m)	14' (4.3m)	17.5' (5.3m)	17.5' (5.3m)
Width	20.5' (6.2m)	20.5' (6.2m)	20.5' (6.2m)	20.5' (6.2m)	20.5' (6.2m)	20.5' (6.2m)
<b>Number of Shanks</b>						
10" (25.4cm)	34	40	48	56	62	70
12" (30.5cm)	28	34	40	46	52	58
<b>Tires</b>						
Dual Front Center Casters	9.5L x15	9.5L x15	9.5L x15	9.5L x15	11L x15	11L x15
Rear Transport Walk Beams	9.5L x15	9.5L x15	9.5L x15	9.5L x15	11L x15	11L x15
Wing (some sizes may have dual)	9.5L x15	9.5L x15	9.5L x15	9.5L x15	9.5L x15	9.5L x15

### All models

<b>Frame/Ground Clearance</b>	
	28" to 32" (71.1 to 81.3 cm) depending on openers and depth settings
<b>Cultivator-Style Trips</b>	
	350 lb (160kg) with 1 x 2 in. (2.5 x 5.1cm) shank, 2 1/4 in. (5.7cm) centers fit 50o sweeps
	550 lb (250kg), 1 x 2in. (2.5 x 5.1 cm) shank, 2 1/4in. (5.7cm) centers fit 50o sweeps
<b>Press Wheels</b>	
3Rubber, in. (cm)	3" x 22" (7.6 x 55.9cm)
	4" x 22" (10.2 x 55.9cm)
	5 1/2" x 22" (14 x 55.9cm)
Steel, in. (cm)	3 1/2" x 22" (8.9 x 55.9cm)
	4 1/2" x 22" (11.4 x 55.9cm)
<b>Options</b>	
	Shim kits to Lower Shanks behind tractor wheels
	Single or dual end markers
	Press wheel mud scrapers
<b>Note</b>	
	Ground engaging tools are required for operation and are not included in specs. Every effort has been made to produce these specifications with the most current information available. However, ongoing product development and improvements mean that equipment and specifications are subject to change without notice.

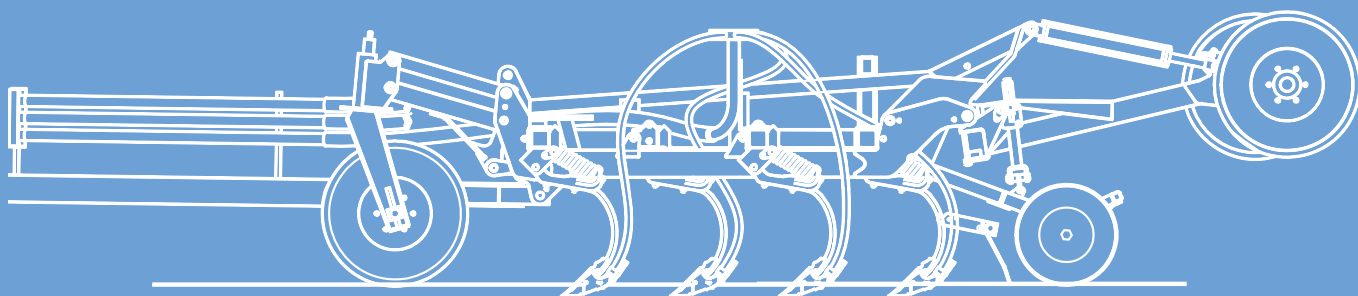
\*Maximum weight (without options or ground engaging tools)



# 5500 AIR DRILL SPECIFICATIONS (METRIC SHOWN IN BRACKETS)

Models	5500	5500
Base Size: ft. (m)	60' (18.3m)	70' (21.3m)
No. of Sections	5	5
No. of Ranks	4	4
Shank Spacing: in. (cm)	10" (25.4cm) & 12" (30.5cm)	10" (25.4cm) & 12" (30.5cm)
Number of Shanks		
10" (25.4 cm) Spacing	72	84
12" (30.5 cm) Spacing	60	70
Frame Widths		
Main Frame	10' (3.0m)	10' (3.0)
Inner Wing	15' (4.6m)	15' (4.6m)
Outer Wing	10' (3.0 m)	15' (4.6m)
Transport Width	17'8" (5.4m)	17'8" (5.4m)
Transport Height (max)	13'6" (4.1 m)	13'6" (4.1m)
Weights: (All with 350 lb trips and 3 in. rubber packers)		
10" (25.4 cm) Spacing	32,800 lb (14,878 kg)	36,500 lb (16,556 kg)
12" (30.5 cm) Spacing	31,100 lb (14,107 kg)	34,400 lb (15,604 kg)
Tyres		
Main Frame Castors	11L x 15 (Dual)	11L x 15 (Dual)
Inner Wing Castors	11L x 15 (Dual)	11L x 15 (Dual)
Outer Wing Castors	11L x 15 (Dual)	11L x 15 (Dual)
Rear Transport Wheels	11L x 15FI (Single)*	11L x 15FI (Single)*
Presswheel Options:		
10" & 12" spacing Steel	3.5" (8.9 cm) Rubber	3" (7.6 cm)
	4.5" (11.4 cm)	4" (10.2 cm)
Pneumatic	6.5" (16.5 cm)	5.5" (14.0 cm)
Press Wheel Mud Scrapers	Optional for steel and rubber wheels	
Stone Kickers	Standard	
Openers	Wide range of Flexi-Coil openers	
Disc Levellers	Optional (2 ranks)	
Trip assemblies: 10" or 12"	350 lb (159 kg) & 550 lb (249 kg)	
Shank, in. (cm)	1 (2.5) x 2 (5.0) 50°C-shank	
Rank to rank spacing, in. (cm)	26" (66 cm)	
Frame depth, in. (cm)	108" (274 cm)	
Castor to packer depth, in. (cm)	148" (376 cm) at 1" (2.5 cm) of seeding depth	
Frame/Ground clearance, in. (cm)	28" (71 cm) to 32" (81 cm) (depending on openers)	
Hydraulic system	High quality parallel cylinders performing both depth and wing lift functions	
Depth Control	Each wing follows ground independently (not affecting adjacent sections); independently controlled hydraulically; single point adjustment	
Safety chain	Standard	
Transport locks	Standard	
Packing Pressure Adjustment	Each frame section independently adjustable	

\* A single tyre is used unless machine is configured with 6.5" pneumatic, then those wheels are used for transport.



# flexi coil



**INTERNATIONAL**

AT YOUR OWN DEALER

Visit our website: [www.newholland.com](http://www.newholland.com) - Send us an e-mail: [International@cnh.com](mailto:International@cnh.com)

The data indicated in this folder are approximate. The models described here can be subjected to modifications without any notice by the manufacturer. The drawings and photos may refer to equipment that is either optional or intended for other countries. Please apply to our Sales Network for any further information. Published by CNH INTERNATIONAL SA. Communications & Advertising. Bts Adv. - Printed in Italy - 11/11 - TP01 - (Turin) - IR1401F/INB