

200 SERIES SKID STEER LOADERS & COMPACT TRACK LOADERS



L213 | L215 | L218 | L220 | L225 | C227



Powerfully Compact 200 series.

The New Holland 200 Series range of skid steer loaders & compact track loaders deliver superior performance in a compact package. The range consists of five skid steer loader models, with operating weights from 2300kg up to 3600kg, and one compact track loader with an operating weight of 3700kg, and lift heights from 2.85m to 3.3m. You will race through your tasks in the tightest spaces thanks to their compact size, exceptional all round visibility and maneuverability, and without compromising comfort or safety. The compact dimensions of under 2m height and just over 1.5m width on the smallest model, ensure access through the narrowest gates and passageways. On Super Boom models the superior lift height and forward reach allows for efficient and easy filling and loading, allowing the load to be dropped into the center of the trailer or feed wagon. Your productivity will soar with the fast cycle times resulting from the perfect balance, excellent stability and powerful hydraulic system. Offering class leading space, comfort and ergonomics, the Comfort Deluxe Cab also affords excellent all round visibility and reduced blind spots.



In 2017 New Holland produced its 250,000th skid steer loader. The manufacture of New Holland skid steer loaders began 45 years ago in North America, and to this day we pride ourselves as being the pioneers of the Super Boom design concept, offering best in class forward reach and lift height combined with unparalleled operator safety.



Comfort Deluxe Cab

The Comfort Deluxe Cab design offers best-in-class comfort, with plenty of head and leg room, in addition, the low noise levels will be appreciated by people or livestock within the working range of the machine. A choice of control layouts are available, either mechanical or electro hydraulic joystick control can be specified.



Best-in-class lift height and reach

The vertical lift geometry of the Super Boom system enables operators to load material far beyond the reach and height of most other skid steer loader designs. The exceptional forward reach afforded by this design makes loading bales and reaching over feed barriers an effortless task.



Unparalleled pushing power

L213, L215 and C227 models, offered exclusively with the radial-lift boom, are ideal for digging and pushing. Productivity in applications such as manure handling, soil moving and yard scraping is boosted by their outstanding breakout force and the geometry of the arm.



Features available for easy attachment use

The standard flow package is included on every machine (standard feature) and is able to handle most common hydraulic attachments.

The high flow package, with up to 55% more flow, is available to manage certain attachments that require more hydraulic power to work properly such as mulchers, cold planers, excavator and compactor wheels.

The attachments are easy and fast to change with the standard Connect Under Pressure feature. **Pressure is automatically** released when the auxiliary line is disconnected. No wrenches are needed.



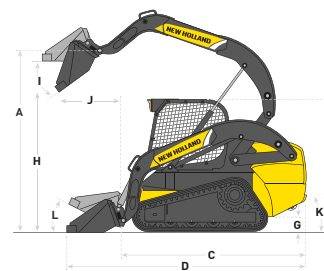
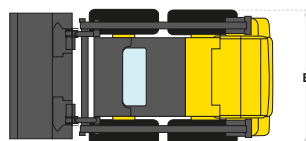
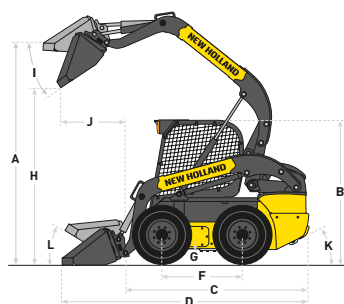
Easy maintenance

Maintenance and servicing on 200 Series skid steer loaders and compact track loaders couldn't be easier, access for engine and hydraulic oil changes is via a removable cover on the left rear quarter. The ground level daily service points are grouped together at the rear for convenience.



SPECIFICATIONS

Models		L213	L215	L218	L220	L225	C227
Engine		ISM/N844L-F IDI	ISM/N844LT-F IDI	ISM/N844LTA-DI-F	ISM/N844LTA-DI-F	FPT Industrial F5	FPT Industrial F5
Max. power	[kW/hp(CVI)]	36.4/49	44.7/61	44.7/61	44.7/61	61/82	55/75
Capacity	(L)	2.2	2.2	2.2	2.2	3.2	3.2
No of cylinders / Aspiration / Emission level Tier-Stage		4 / N / 3-3A	4 / T / 3-3A	4 / T / 3-3A	4 / T / 3-3A	4 / T / 3-3A	4 / T / 3-3A
Bore and stroke	(mm)	84x100	84x100	84x100	84x100	99x104	99x104
Rated engine speed	(rpm)	2800	2800	2800	2800	2500	2500
Max. torque	(Nm)	143	171	171	171	305	275
Fuel tank capacity	(L)	60.5	60.5	75.7	75.7	96.5	75.7
Hydraulic system							
Pump flow	(lpm)	59	59	72	72	85	85
Optional high flow	(lpm)	–	–	109	109	131	117
Relief pressure	(bar)	210	210	210	210	210	210
Transmission		Hydrostatic single reduction chain drive					
Travel speeds low range / high range (optional)	(kph)	12.7 / –	12.7 / –	12.7 / 18.0	12.7 / 18.0	11.3 / 16.9	8.2 / 12.2
Drive pump control		Direct mechanical or Electro-hydraulic					
Performance specs							
Rated Operating Capacity (ROC)*	(kg)	590	680	818	905	1135	1225
Rated Operating Capacity (ROC) with counterweights*	(kg)	635	725	850	950	1200	1260
Tipping load	(kg)	1179	1360	1633	1814	2268	2449
Lift cylinder breakout force	(kN)	12.7	14.1	11.7	15.3	22.6	27.0
Bucket cylinder breakout force	(kN)	18.6	18.6	24.7	32.5	38.3	32.3
Chassis design		wheels	wheels	wheels	wheels	wheels	tracks
Boom design		Radial Lift	Radial Lift	Super Boom	Super Boom	Super Boom	Radial Lift



Models		L213	L215	L218	L220	L225	C227
Dimensions and weight							
A - Max. lift height (bucket hinge pin)	(mm)	2845	2845	3048	3073	3290	3124
B - Height	(mm)	1919	1919	1974	1998	2002	1998
C - Length without attachment	(mm)	2435	2435	2685	2685	2986	2669
D - Length with attachment	(mm)	3028	3028	3352	3338	3624	3292
E - Width over tire	(mm)	1518	1518	1642	1755	1768	1676
F - Wheelbase	(mm)	941	941	1128	1128	1322	–
G - Ground clearance	(mm)	178	178	178	203	203	203
H - Dump height	(mm)	2246	2246	2380	2405	2615	2495
I - Dump angle	(°)	40	40	52	52	55	40
J - Dump reach @ max. height	(mm)	469	469	783	758	820	568
K - Angle of departure	(°)	22	22	23	25	24	32
L - Rollback angle (bucket on ground)	(°)	26	26	35	34	34	31
Operating weight	(kg)	2300	2430	2690	2930	3580	3750

– Not available * 50% of tipping load All figures are based on a machine with standard tyres and standard DF [Dirt & Foundry] bucket



Visit our website:
www.newholland.com
 Send us an e-mail:
africa.topservice@newholland.com
middleEast.topservice@newholland.com

