

NEW CX8 SERIES



UNEQUALLED HARVESTING PERFORMANCE.

New Holland never stops improving, testing and innovating. The proof? The NEW CX8 Series combine line, which includes the world's most powerful conventional combine. New Holland has merged unsurpassed threshing and separation efficiency from four-drum technology with state-of-the-art systems such as the Opti-Clean™ self-leveling cleaning shoe with Opti-Fan™ for unequalled cleaning performance. The industry-leading Harvest Suite™ Ultra cab offers oceans of space and whisper-quiet operation. Opti-Spread™ is a dream for customers harvesting with wide heads, allowing wide and even residue distribution.

Models	CX8.80	CX8.90
Grain header width	(feet) 20 - 35	20 - 41
Number of strawwalkers	6	6
Grain tank capacity manual extensions / remote covers	(bushel) 350 / 326	350 / 355
Maximum engine power	[hp(CV)] 401	490



TAKING SUPER-CONVENTIONAL COMBINES TO THE NEXT LEVEL

The flagship CX8.90 is still the world's highest-capacity conventional combine. This six-strawwalker 490-hp model benefits from ECOBlue™ SCR technology for Tier 4A compliance and features a 355-bu grain tank with remote operated covers. Compatible with the 40-ft 840CD and 880CF draper heads and the 41-ft Varifeed™ head, and available with IntelliSteer™ auto-guidance, the CX8.90 definitely allows you to harvest at the next level.



A detailed view of the interior of a New Holland combine harvester cab. The image shows a large, modern steering wheel with a silver center, a blue and grey fabric seat, and a complex control panel with numerous buttons and a joystick. A digital display screen on the right shows the New Holland Agriculture logo. The background reveals the yellow mechanical components of the harvester's header and the curved metal structure of the cab's roof.

A NEW BENCHMARK FOR HARVESTING COMFORT

The CX8.80 and CX8.90 combines quite simply offer you a home away from home during long harvesting days and nights. The Harvest Suite™ Ultra cab is completely new to CX combines, and is the result of extensive customer consultation. The cab is larger with 130.5 ft³ volume and boasts 68 ft² of glass, 7% more than previous models. You can enjoy all that space in the peace and quiet of the near-silent 73 dB(A) cab. For enhanced comfort during long harvesting days, a removable fridge located beneath the instructor seat is standard.



SHINING A LIGHT ON HARVESTING EXCELLENCE

The CX Series lighting package raises the lighting bar. The spread of light is precision engineered for maximum visibility of the entire head and the field ahead and behind. You can expect precision unloading in the dead of night. You'll never lose a single grain thanks to a specific unloading auger light. You even have the choice of a full LED work light package and LED far distance lights to provide visibility up to 1,600 ft ahead. Another innovation from New Holland.



ARE YOU SITTING COMFORTABLY?

Choose from three seating options:

- The standard wide cloth-trimmed seat provides exceptional features and ensures all operators will stay comfortable throughout the longest harvesting day.
- The optional deluxe cloth-trimmed seat with heating and active ventilation is perfect for the hottest days and the coldest nights, and features fore/aft movement for even more comfort.
- The top-of-the-line leather-trimmed seat features all the above as well as extended vertical travel and automatic weight adjustment that absorbs even the most severe bumps to offer the ultimate in operator comfort and style.



YOUR HARVESTING CONSOLE

The new CX8 harvesting console offers ergonomic control of all key harvesting parameters, and it has been designed to become an extension of you. The force-based CommandGrip™ multi-function handle—the same as found on high-horsepower tractors, CR combines and the FR SP forage harvesters—delivers intuitive control and enables you to fine tune harvesting speed for ultimate performance.



Optional pre-wired camera

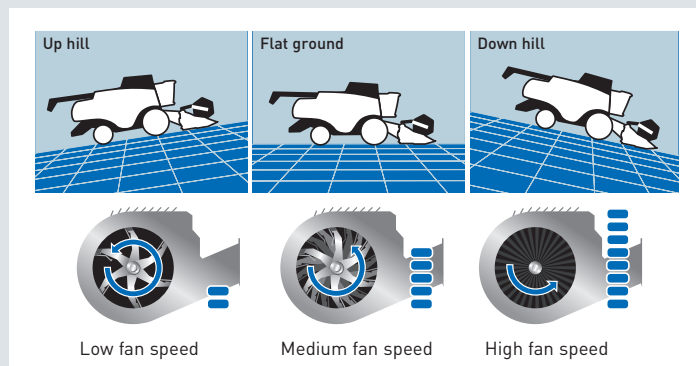
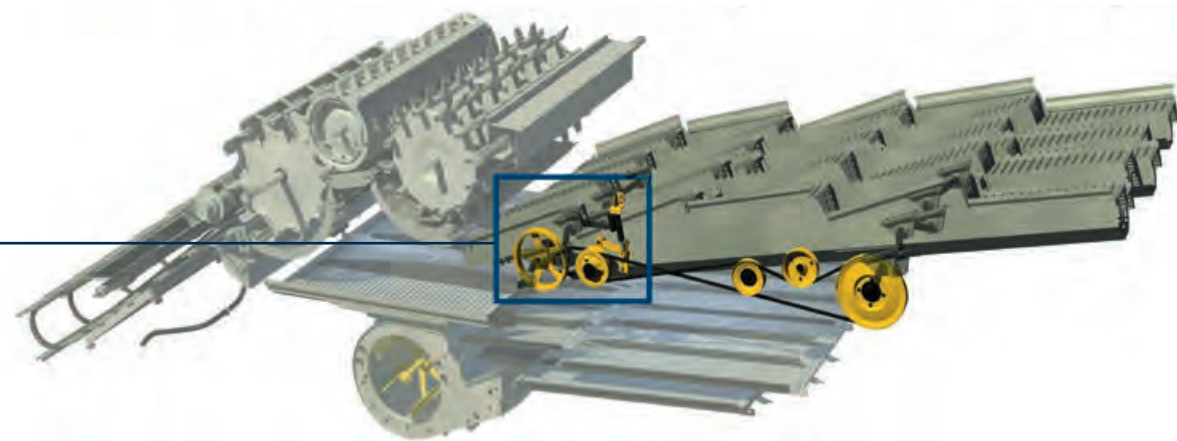
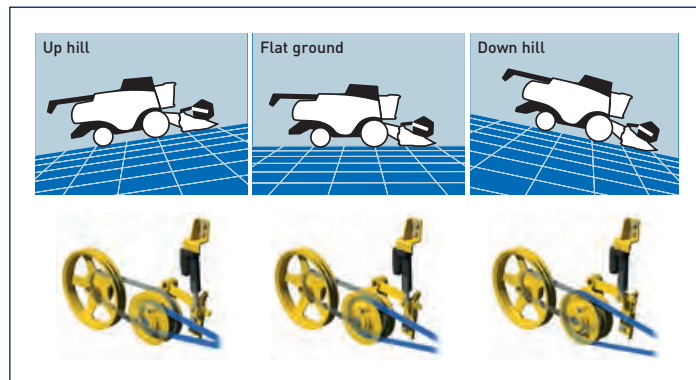
TOUCHSCREEN SIMPLICITY

The ultra-wide 10.4-inch IntelliView™ IV color touchscreen monitor is mounted on rollers which can move along an ideal viewing arc so you can position it just where you want. A second screen can be installed on request and is perfect for IntelliSteer™ auto guidance tasks or for displaying camera views. You can view up to three cameras on each monitor and one camera is pre-wired to assist with reversing.



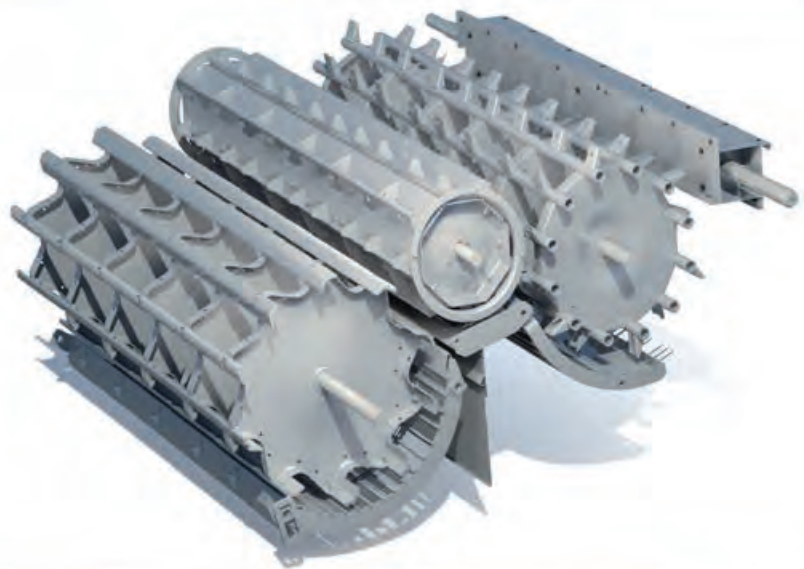
AUTO-ADAPTIVE PRODUCTIVITY WITH OPTI-SPEED™ STRAWWALKERS

The Opti-Speed™ strawwalkers represent a ground-breaking harvesting advance and deliver up to 10% productivity improvements. Unique in the industry, New Holland regulates strawwalker speed in respect to harvesting conditions. Simply select from four settings: wheat, corn, canola or rice, and your CX will automatically regulate strawwalker speed. When travelling uphill strawwalker speed automatically reduces to ensure all of the valuable grains remains safely inside the combine, and on downward gradients, the speed is increased to maintain efficient separation.



GRAVITY DEFYING OPTI-FAN™ TECHNOLOGY

The award winning Opti-Fan™ system is standard and compensates for the gravitational effects on crops during harvesting. Select the desired fan speed on flat ground and the system automatically adjusts it: when harvesting on upward slopes the fan slows down to prevent losses, and when tackling downhill gradients it increases the speed to maintain a perfectly clean grain sample. This efficient system requires no extra work from the operator and provides a better grain sample together with reduced losses.

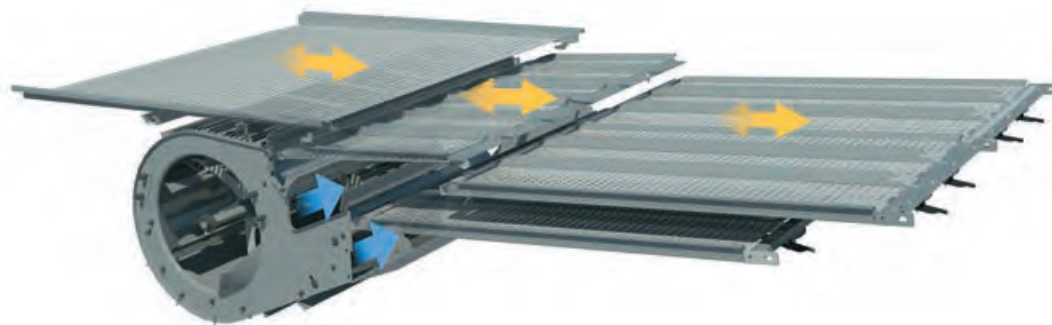


OUTSTANDING FOUR-DRUM TECHNOLOGY

The CX Series benefits from New Holland's renowned four-drum threshing system which delivers gentle yet efficient threshing for the highest quality yields. The largest threshing drums on the market smooth out peak loads, even in damp conditions, which ensures easy separation of all grain kernels of every cereal crop or variety.

THE CLEANEST GRAIN FOR THE HIGHEST REWARDS

The Opti-Clean™ system optimizes the stroke and throwing angles in the cleaning system and improves cleaning performance by up to 20% for enhanced profitability. New Holland has optimized the cascade for greater capacity, and the longer sieve stroke and steep throwing angle keep more material airborne for even higher cleaning efficiency. If that wasn't enough, the entire system works to reduce overall machine vibrations and increase operator comfort.



OPTI-SPREAD™ SYSTEM: SPREADING WIDE. ALWAYS

When using the largest 41-foot Varifeed™ header on the CX8.90, a dedicated and powerful straw spreading system is a must. The optional Opti-Spread™ straw management system mounted behind the straw chopper easily meets any spreading width requirement. This straw chopper has been further enhanced with the addition of Dual-Chop™ technology. All residue passes through a dedicated rake to ensure a super-fine chop of all material.



A SUPER-SIZE GRAIN TANK FOR SUPER-SIZED PERFORMANCE

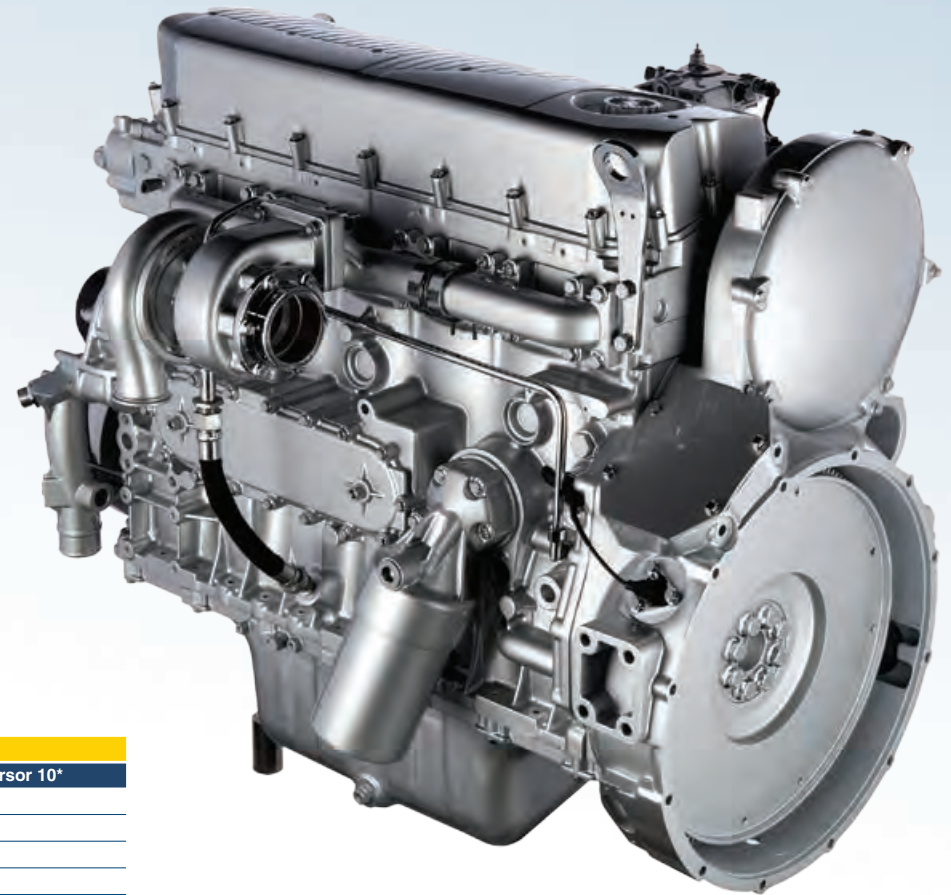
The new increased tank capacity of the CX8.90 with optional folding covers perfectly matches the huge CX8.90 appetite. A capacity of 355 bushels is the largest available on a conventional combine and provides the convenience of opening and closing from the comfort of the Harvest Suite™ Ultra cab.

POWERFUL, EFFICIENT AND PRODUCTIVE

The CX8.90 combine is equipped with a Tier 4A compliant ECOBlue™ SCR engine which delivers 10% fuel savings when compared to a Tier 3 model. Outstanding transient response ensures constant productivity no matter what the field conditions. The CX8.80 also benefits from ECOBlue™ HI-eSCR technology, which is compliant with the even more stringent Tier 4B regulations. Developed in partnership with New Holland's sister brand FPT Industrial (Fiat Powertrain), the engine also features Common Rail technology for precision fuelling and outstandingly responsive performance.



ECOBue



Models	CX8.80	CX8.90
Engine*	FPT Cursor 9*	FPT Cursor 10*
Complaint with Tier 4 emission regulations	Tier 4B	Tier 4A
ECOBue™ SCR system (Selective Catalytic Reduction)	●	●
Gross engine power @ 2100 rpm - ISO 14396 - ECE R120	[hp(CV)] 360	449
Maximum engine power @ 2000 rpm - ISO 14396 - ECE R120	[hp(CV)] 401	490

● Standard * Developed by FPT Industrial

Models	CX8.80	CX8.90
Grain head		
Cutting width	(ft) 20 - 35	20 - 41
Corn heads		
Number of rows	Folding corn heads	8
Number of rows	Rigid corn heads	6 - 12
Head control systems		
Terrain Tracer system	●	●
Straw elevator		
Front face adjustment	●	●
Harvest Suite™ Ultra cab glass area	(ft²) 68	68
Cab category level - EN 15695	2	2
LED working lighting pack	○	○
LED long distance lighting pack	○	○
Standard cloth trimmed seat with air-suspension	●	●
Deluxe cloth trimmed heated air-suspension seat with Active Ventilation	○	○
Leather trimmed heated air-suspension seat with Active Ventilation and lateral suspension	○	○
Instructor's seat	●	●
Leather Steering wheel	●	●
IntelliView™ IV monitor with adjustable position	●	●
2nd IntelliView™ IV monitor	○	○
Viewing cameras	○	○
Integrated fridge under the instructor seat	●	●
Optimum cab noise level - ISO 5131	(dB(A)) 73	73
New Holland Precision Land Management systems		
IntelliSteer™ ready automatic guidance system	●	●
IntelliCruise™ system	○	○
Automatic row guidance system for corn heads	○	○
Yield measuring and moisture measuring	●	●
PLM® desktop software	●	●
Threshing drums		
Width	(in) 62	62
Diameter	(in) 29.5	29.5
Drum Concave		
Area	(in) 1829	1829
Wrap angle	(degrees) 111	111

● Standard ○ Optional

* Developed by FPT Industrial

** Biodiesel blend must fully comply with the latest fuel specification EN14214:2009 and operation is in accordance with operator manual guidelines

**** Traction wheels other than those mentioned are also available.

Models	CX8.80	CX8.90
Beater		
Diameter	(in) 18.75	18.75
Rotary Separator		
Multi-Thresh™ system	●	●
Strawwalkers		
Number	6	6
Opti-Speed™ variable strawwalker speeds	●	●
Cleaning		
Self-levelling cleaning shoe	●	●
Opti-Clean™ cleaning system	●	●
Cleaning fan		
Opti-Fan™ system	●	●
Grain tank		
Capacity manual extensions / remote covers	(bu) 350 / 326	350 / 355
Unloading auger		
Unloading speed	(bu/s.) 3.5	3.5
Engine		
Type*	FPT Cursor 9*	FPT Cursor 10*
Compliant with Tier 4 emission regulations	Tier 4B	Tier 4A
ECObLue™ SCR system (Selective Catalytic Reduction)	●	●
Gross engine power @ 2100 rpm - ISO 14396 - ECE R120	[hp(CV)] 360	449
Maximum engine power @ 2000 rpm - ISO 14396 - ECE R120	[hp(CV)] 401	490
Approved Bio Diesel Blend	B7**	B20**
Fuel tank capacity	(gallons) 265	265
DEF tank capacity	(gallons) 32	32
Maximum speed standard	(mph) 19	19
Maximum speed optional	(mph) 25	25
Residue management		
Opti-Spread™ residue management	○	○
Integrated straw chopper	○	○
Chaff spreader	○	○
Dimensions with traction wheels****		
	900/60R32	900/60R32
Maximum height in transport position	(ft) 13	13
Maximum width - transport	(ft) 12.9	12.9
Weight		
Weight without header, chaff spreader or straw chopper and empty fuel tank (lbs)	34,255	35,349

Learn more at www.newholland.com/na

Design, materials and/or specifications are subject to change without notice and without liability therefor. Specifications are applicable to units sold in Canada, the United States, its territories and possessions, and may vary outside these areas.

© 2015 CNH Industrial America LLC. All rights reserved. New Holland is a trademark registered in the United States and many other countries, owned by or licensed to CNH Industrial N.V., its subsidiaries or affiliates. Any trademarks referred to herein, in association with goods and/or services of companies, other than owned by or licensed to CNH Industrial N.V., its subsidiaries or affiliates, are the property of those respective companies.



Safety begins with a thorough understanding of the equipment. Always make sure you and your operators read the Operator's Manual before using the equipment. Pay close attention to all safety and operating decals and never operate machinery without all shields, protective devices and structures in place.

NH31807034 • 06151.5 • OTP • PRINTED IN U.S.A.

