

NEW HOLLAND AIR DRILLS AND AIR CARTS

P2050 | P2060 | P2070 | PI030 | PI040 | PI050 | PI060 | PI070



ADVANCED ACCURACY WITH FLEXIBILITY TO MATCH YOUR SEEDING STYLE

INNOVATIVE. FLEXIBLE. DURABLE. ACCURATE.

New Holland air drills and air carts combine innovation, simplicity and durability to deliver precise seeding performance that leads to uniform emergence and plant vigor and yield. And, New Holland offers you the flexibility to create a system that matches the way you seed.

CONSISTENT SEEDING ACCURACY AND DEPTH

Hills, terraces and gullies pose no problems for New Holland air drills. The flexible frame design allows for precise seed placement over the entire width of the machine. Each press wheel follows field contours to maintain the seeding depth you've chosen. This flexibility also dissipates frame stress for more durability than traditional welded joints. On-row packing follows to ensure the best chance of fast, even germination.



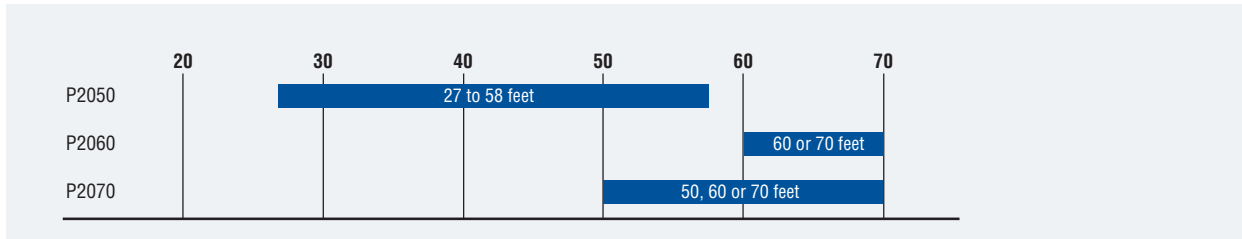
TABLE OF CONTENTS	PAGES
P2000 Air Drills	4-13
Openers	8-11
Press Wheels	12, 13
P1000 Air Carts	14-19
Air Drill Specifications	20, 21, 22
Air Cart Specifications	23

SIMPLE DEPTH CONTROL

On the P2050 and P2060, two hydraulic cylinders and a single depth setting location allow you to control seeding depth across the entire machine. It's easy to set exact, repeatable seed depth in every field. This eliminates fading, leaking and phasing problems associated with master-slave designs. The new P2070 Precision Hoe Drill features patented individual opener control for the ultimate in ground-following capabilities.

CONFIGURED TO YOUR NEEDS

Choose your seeding style, and then equip your New Holland air drill to match your needs with your choices of trips, openers and press wheels. New Holland offers three air drill models with a choice of configurations, including options for placement of anhydrous ammonia (NH₃) liquid or dry fertilizer.



NARROW ROW

A narrow opener/knife places the seed and/or fertilizer in a narrow row using on-row press wheel packing.

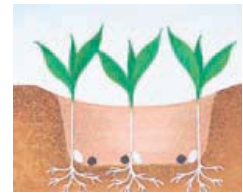
- Offers low overall soil disturbance.
- Moderate rates of fertilizer can be placed with the seed. Seed-placed fertilizer usually needs to be supplemented in a separate operation.



SPREAD ROW

A low- to moderate-disturbance opener places the seed and fertilizer in a band.

- Offers low to moderate soil and residue disturbance.
- Spread reduces the concentration of the seed and fertilizer, allowing higher fertilizer rates than with narrow row openers.



INTER ROW™ (P2050 ONLY)

The Inter Row-shank configuration places fertilizer between the seed rows.

- Low to moderate soil disturbance with low residue disturbance.
- Placement of fertilizer between rows allows high rates of fertilizer and safe placement.



DOUBLE-SHOOT

A double-shoot opener places seed and fertilizer in separate planes in a single operation, either between the rows, as a side band or paired row configuration.

- Low to moderate soil disturbance with low residue disturbance.
- Precision placement of fertilizer in a row separate from the seed allows higher fertilizer rates.
- Fertilizer in the root zone helps the planted crop to be more vigorous and competitive than the weeds that may grow between the rows.



Self-lubricating bushings, chrome pins and durable polyurethane pads are located at frame flex joints for long frame life and continued depth accuracy.

Air Drill Model	Working Width, ft.	Spacing Configurations, in.	
P2050	27 to 58	7.2, 10 or 12	
P2060	60 or 70	7.5, 10 or 12	
P2070	50, 60 or 70	10 or 12	

Air Cart Model	Capacity, bu.	Compartments	Towing
P1030	280	Two	Behind or Between
P1040	330	Two	Behind or Between
P1050	380	Three	Behind or Between
P1060	430	Three	Behind or Between
P1070	580	Three	Tow Behind Only

SIMPLE, ACCURATE SEEDING UP TO 58 FEET WIDE IN ANY FIELD CONDITION

The P2050 air hoe drill features precision depth control and reliable seed spacing with the versatility to handle challenging field conditions. Models range from 27 to 58 feet wide (8.2 to 17.7 m), available in your choice of 7.2-, 10- or 12-inch spacing.

LEVEL FROM FRONT TO BACK

A parallel linkage between the front casters and the rear press wheels keeps the frame level and maintains seeding depth in changing conditions. Dual walking casters provide optimum flotation, and are standard on the center section of larger models, and optional on wing sections.



SMOOTH RESIDUE FLOW

The P2050 four-bar frame provides a ground clearance of 32 inches. This paired with ample depth between shank rows allows for excellent residue flow. Casters carry the frame in the front and press wheels carry the rear, so there are no wheels in the frame to interfere with residue flow.



Single-point depth adjustment allows you to control depth across the entire machine.



The floating hitch gives improved front-to-back land following.



Dual walking casters provide optimum flotation.

ACCURATE SEEDING COMBINED WITH INNOVATIVE FOLDING

The New Holland P2060 air hoe drill places seed precisely over a wide area, but alters the conventional folding methodology of large air seeding machines. With working widths of 60 or 70 feet (18 or 21 m), and the capability to go even wider, the P2060 can be folded into the same 17-ft 8-in. wide x 13-ft 6-in. high envelope equal to or smaller than the 4WD pulling it with six sets of large flotation tires carrying the machine's weight at all times.



VARIABLE PACKING PRESSURE

You can easily change packing pressure from field to field using a patented variable packing pressure system that adjusts pressure across the entire width. Multiple packing choices include gang style press wheels in semi-pneumatic, steel or walking beam pneumatic. Customized soil closing options include single-bar heavy harrow or disc levelers.



PATENTED TWO-PIECE WING

Two-piece independent wing frames provide the flexibility to follow field contours and dissipate frame stress. Tow-behind air carts utilize a steering hitch which allows the air cart to follow the tractor's path in transport and to compensate for sidehill skewing during field operation.

CONSISTENT SEED DEPTH

The flexible P2060 frame provides unmatched depth accuracy by allowing each wing and press wheel to follow the contours of the ground independently without affecting adjacent sections. The front two ranks follow terrain at a depth set by the nearby caster assemblies, and the rear two ranks follow the ground on which the press wheels run.



VERTICAL EDGE-ON SHANK OPTION

Equip your P2060 with conventional C-shanks or choose vertical edge-on shanks to reduce soil disturbance and better cut through heavy surface residue.

EASY TRANSPORT AND STORAGE

The innovative P2060 design makes transport and storage easier than ever. Since all tires are used during transport, the ride from field to field is extremely smooth.



UNRIVALED GROUND FOLLOWING FOR OPTIMAL SEED PLACEMENT

The new P2070 Precision Hoe Drill features patented individual opener depth control and outstanding ground-following capability. The combination gives you accurate, consistent depths across the width of the drill. Add the compact design for easy, narrow transport, and the P2070 is a leader in productivity, efficiency and transportation safety.

INDIVIDUAL OPENER DEPTH CONTROL

For more precise seed control, the P2070 includes patented individual depth control so that each opener follows terrain independently of the frame. An easy-to-use adjustment bolt on each opener allows you to adjust seeding depth from 0 to 2 inches in 1/8-inch increments.



EXCLUSIVE OPENER UNIT FOR CONSISTENT SEED DEPTH

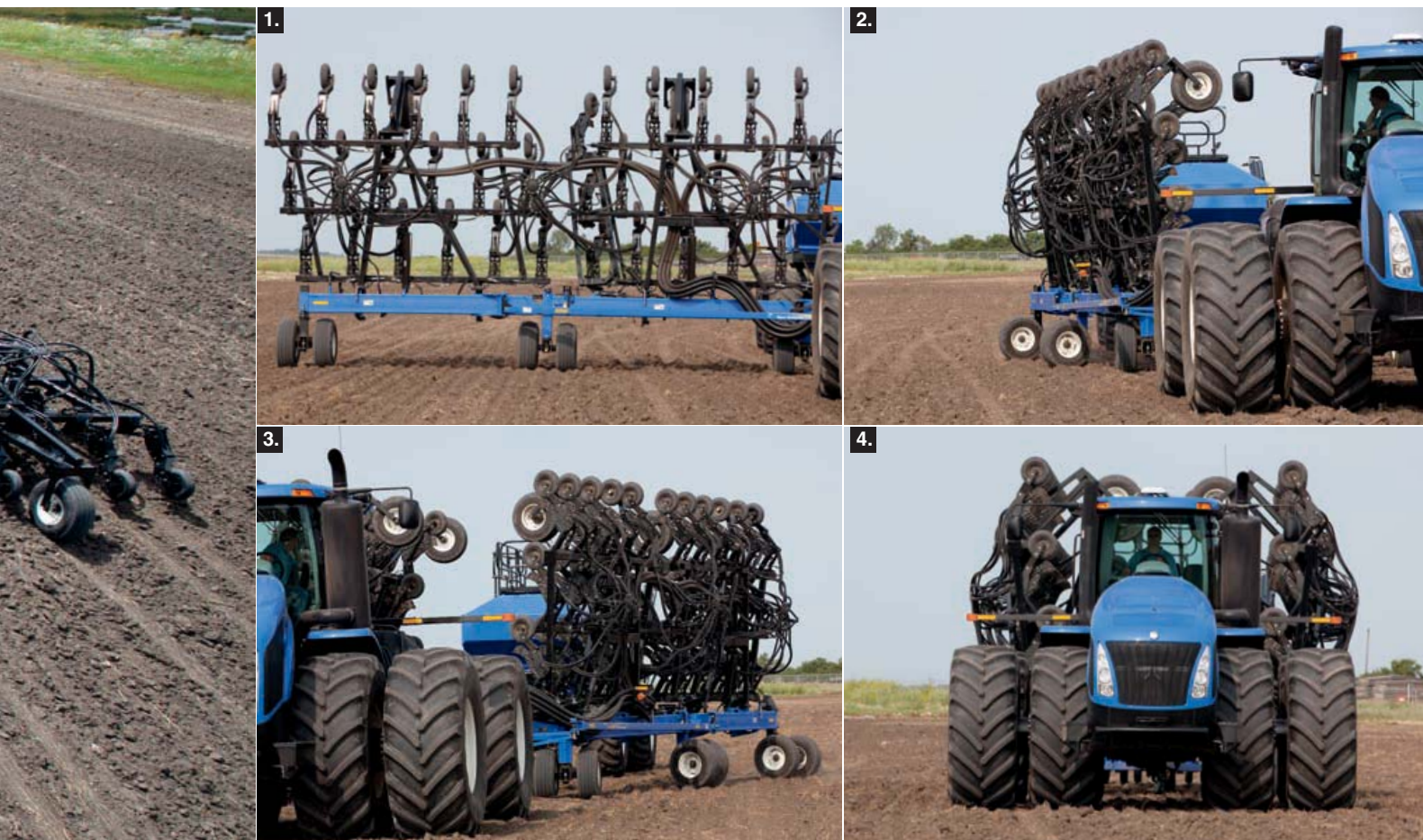
A patented, true, parallel-link row unit features a dual pivot arm that maintains the proper opener angle in relation to the soil surface to provide a consistent seed depth and faster, uniform crop emergence. This unique feature is especially useful for achieving precise depth control with small-seed crops.



UNMATCHED TRANSPORT DESIGN

The innovative fold-back design provides unsurpassed safety and maneuverability. Independent frame sections allow maximum flexibility with an innovative, tight steering hitch for tow-behind air carts. The fold-back design means castor wheels remain on the ground for even weight distribution and less frame wear and tear compared to traditional fold-up wings.

1. Raise the drill to engage the lockshaft
2. Raise the wing to full upright position and fold back
3. Raise the other wing to full upright position and fold back
4. Drive forward, and the wing booms and inner wing casters will lock automatically with forward motion.



SUPERIOR TRASH FLOW

The three-rank design with a staggered shank layout ensures optimal trash flow. An excellent frame-to-ground clearance also contributes to superior trash flow that's unmatched in the industry.

ELECTRONIC ON-THE-GO ADJUSTMENTS

Electronic hydraulic controls are standard, allowing you to vary packing force in different soil conditions throughout the field. Operators can also transfer weight to optimize weight distribution from front to back.

ANHYDROUS APPLICATION TECHNOLOGIES TO FIT YOUR CONDITIONS

New Holland air drills provide a range of anhydrous ammonia (NH_3) application tools to suit the soils, weather and other seeding conditions in your unique operation.



MAXIMIZE THE AGRONOMIC ADVANTAGES OF NH_3

NH_3 fertilizer has advantages in terms of cost, service and seeding efficiency. However, NH_3 also has disadvantages that must be taken into account for safe, efficient use: operator safety, seed safety and potential for loss to the air.

TIMELY AVAILABILITY

NH_3 is always injected into the soil (banded), either at the same time as seeding or in a separate operation. After it is placed in the ground, NH_3 will migrate until all its molecules are attached to soil water. How much it migrates depends on the amount of soil moisture, soil type, soil conditions, and how well the soil is sealed above the band of NH_3 .



Talk to your New Holland dealer about which technology is right for your unique situation. When he knows your soils, moisture conditions, crops and seeding style, your dealer will be able to recommend a configuration that provides safe, efficient use of NH_3 fertilizer – for your exact conditions.

Select the application tools to suit the soils, weather and other conditions in your operation.



CONFIGURATIONS

Since no single application tool or method is right for every farm operation, every year, New Holland offers a variety of NH₃ application technologies: offers a variety of NH₃ application technologies:



1. InterRow shank

(Model P2050 only) can be configured for either granular, NH₃ or liquid fertilizer, and is available on 12-inch seed rows only.



OPTION B: SIDE BANDING

- Good fertilizer interception by plants.
- Limited weed access to fertilizer.
- Adaptable to other double -shoot applications.
- Moderate sensitivity to soil conditions.



2. Double-Shoot Stealth™ Openers.

OPTION A: PAIRED ROW BANDING AT FOUR- OR FIVE-INCH SPREAD

- Optimal protection from fertilizer loss.
- Limited weed access to fertilizer.
- Adaptable to other double-shoot applications.
- Good sensitivity to soil conditions.



For paired row banding and side banding, New Holland Stealth openers have rubber grommets in them to insulate the cast opener from the cold NH₃ gas or liquid. This reduces the amount of freezing of the opener, which then reduces build up of frost and mud.



PLACE SEED AND FERTILIZER TO YOUR EXACT REQUIREMENTS

Precise seed and fertilizer placement comes down to finding the right opener to match your conditions. New Holland provides the choices to make your preferred seeding styles more efficient and profitable.

MODULAR STEALTH™ OPENERS

The Stealth™ opener is a modular system that adds versatility to your row seeding. A choice of tips or attachments can be mounted on the main body for a customized opener system. If you decide to double-shoot, attachments bolt on to the rear of the main body. Stealth openers are manufactured with a process that creates Austempered Ductile Iron (ADI) for maximum strength and durability.



Correct seed placement is foundational to the seeding operation.



The main Stealth™ opener body mounts on the shank. A replaceable tip is secured to the main body with a roll pin. Double-shoot attachments bolt on to the rear of the main body.



Replaceable Stealth™ knife tips include the heavy-duty tip, the gumbo tip and tips with carbide points. Spread tips are for single-shoot only.



The Nok-On™ system offers sweeps in a range of sizes (2-, 3-, 4-, 5 1/2-, 9-, 11- and 12-inch) to match preferred row width.

NOK-ON™ OPENERS

The Nok-On™ system makes changing sweeps fast and convenient to give you maximum versatility. You can quickly switch from a narrow opener to a wide one, using a hammer to add or remove sweeps as needed. An adjustable spread boot option lets you fine-tune the product spread to match your choice of sweeps and packing. As you set the deflector farther into the product stream, you get a wider product spread. A Nok-On opener adapter lets you use Stealth tips with knock-on convenience. *Nok-On™ is a trademark of Ralph McKay (Canada).*



SINGLE-SHOOT

New Holland Stealth™ openers use replaceable tips that work for both narrow-row and spread-row seeding styles. C shank and edge-on shank openers available.

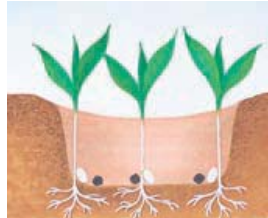
Knife Tips

- Low soil disturbance
- Very narrow spread of 7/8 to one inch
- For use with any press wheel
- Heavy-duty, gumbo or carbide tips match soil conditions



Spread Tips

- Designed for low-disturbance seeding
- Wider product spread allows more fertilizer to be placed with the seed
- Spread tips are available in three-, four- or five- inch sizes
- For use with press wheels that match row widths



DOUBLE-SHOOT

Stealth™ double-shoot attachments allow one-pass placement of seed and fertilizer. Seed/fertilizer separation prevents seedling damage. C shank and edge-on shank openers available.

Side Band

- Places seed one inch above and one inch beside the fertilizer
- Wing forces soil over the fertilizer trench to provide separation from seed
- Can be used with all press wheels
- Available in standard or long-life carbide



Paired Row

- Seed is placed one inch above and one to two-and-a-half inches to both sides of the fertilizer
- Three inch available in HS format for heavy soils and gumbo, and in LS format for light soils and sandy loam
- Three-, four- and five-inch available in carbide for extended wear to maintain integrity of seed bed
- Designed to force soil over the fertilizer trench to provide separation from the seed
- For use with press wheels that match row widths



EFFECTIVE ON-ROW PACKING

Select from a wide range of press wheel choices to give you the on-row packing performance you need. By matching the press wheel to your seed spread and soil type, you have the best chance for fast, even germination.





RUBBER PRESS WHEELS

Rubber press wheels flex to shed soil build-up in heavy, sticky soil conditions. The flatter profile rides over a wider area for less packing pressure—just right for soils where too much packing can be a problem or to accomplish a smoother finish.



3-inch rubber press wheels can be used with knife openers or when spreading seed up to three inches. It also works for narrow double-shoot



4-inch rubber press wheels are effective for many applications where seed is spread up to 4 inches.



5-1/2 inch rubber press wheels offer on-row packing in wide seed spread applications.

STEEL PRESS WHEELS

Steel press wheels are used in more abrasive sandy and rocky conditions. AV-profile concentrates packing pressure onto a smaller area for higher pressure over the seed. The shape of the furrow also provides protection from wind and water erosion.



3-1/2 inch steel press wheels work well with openers that spread seed up to 3-1/2 inches, or with narrow double-shoot openers. The soil profile is a wide V-shape.



4-1/2 inch steel press wheels spread the packing pressure over a wider area for use when spreading seed or for wide double-shoot applications. The soil profile is the flattest of the steel wheels.

TRIPS TO MATCH YOUR OPERATION

Choose 350-pound trips for most soil conditions, or 550-pound trips for double-shoot applications and tough conditions. An optional one bar, half-inch tine harrow can be mounted behind the rear shanks for added leveling and row closing.



Choose trips that match your soil conditions—350-pound or 550-pound for double-shoot applications and tough conditions.



5.9" and 6.5" pneumatic packer options (P2060 only).

THE MOST ADVANCED AIR DELIVERY TECHNOLOGY AVAILABLE

The advanced engineering in New Holland air carts allows you to apply seed and fertilizer efficiently, gently and accurately. New Holland air carts can apply several products in a single pass, fill and clean out fast, and transport easily. The wide stance of New Holland air carts and a selection of tire options provide the floatation and stability requirements for any terrain.



FLEXIBILITY IS IN THE DESIGN

With New Holland air carts you can apply multiple products while seeding or banding fertilizer, i.e. single- or double-shoot. Whether you choose variable-rate technology or the simplicity of mechanical drive, New Holland air carts accurately distribute fertilizer and a wide range of seed, at whatever rate and combination you decide.

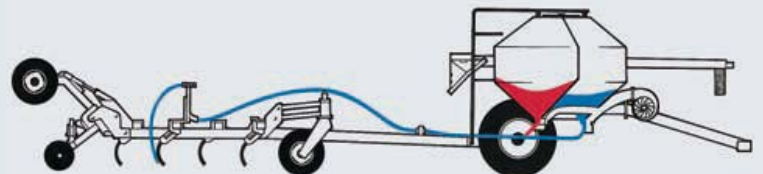
FIVE MODELS

The P1050 and P1060 feature three integrated polyethylene tanks, allowing you to carry up to three separate products for single- or double-shoot applications. The new P1070 features three tanks made of steel. The three-tank configuration creates more options for applying seed, fertilizer or granular products in a single pass. The P1030 and P1040 feature an integrated polyethylene tank that is divided into two compartments for single- or double-shoot applications.

FIVE MODELS TO SUIT YOUR OPERATING REQUIREMENTS

Model	Capacity (bushels)	Number of Compartments/Tanks
P1030	280	2
P1040	330	2
P1050	380	3
P1060	430	3
P1070	580	3

Single-Shoot means one or more products mixed together in a single distribution system and applied in one zone. The most common combinations are applying seed alone, or applying a mixture of seed and fertilizer. Applying two types of fertilizer and blending them together while banding is also called single-shoot.





EASY ACCESS SAVES TIME

A key part of your efficiency is being able to load, unload, set and service the air cart easily and safely. That's why New Holland air carts have the most convenient ladder and platform designs in the industry. Tank hatches are large to permit easy access for cleaning, and feature easy-operating, tight-sealing latches.



HIGH-CAPACITY AUGERS

You'll fill and empty quicker than ever with ten-inch, high-capacity, orbital-drive augers. Augers feature low-restriction flighting tubes, and include additional top and bottom controls for convenient one-person operation. Augers swing out to convey seed or fertilizer into the tanks, or swing underneath to empty. For gentle seed handling of sensitive crops, the auger is equipped with steel cupped flighting and variable speed auger control.

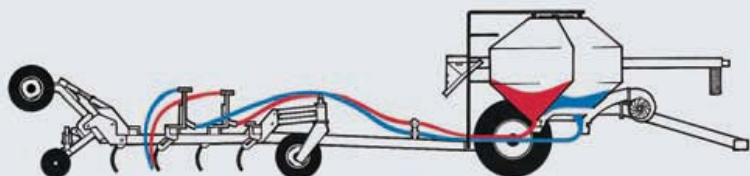
Easy Flow headers provide unbeatable product flow and gentle seed handling from primary to secondary lines. The design makes for easy clean-out access and service.

Quick-Connects let you hook up to seeding or banding tools quickly and easily—especially helpful if you use your air cart on different tools.

Swing-away hydraulic manifold allows for easy access to meter rollers for easy change-out, simple and complete air cart cleanout when changing products, and allows augers to reach fully under each tank to auger product back into the truck.



Double-Shoot means placing products separately in two zones. By adding a second distribution system, two products can be placed in two different zones. A common double-shoot application is seeding while placing fertilizer below and to the side of the seed row.



DEPENDABLE METERING AND MONITORING SYSTEMS FOR UNSURPASSED ACCURACY

What are you seeding now? What about next year, or three years from now? Whatever it is, a New Holland air cart can get the job done right.

PATENTED DOWN DRAFT METERING

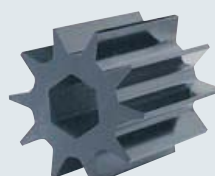
New Holland air carts use down draft meter technology that improves the blend of air and product for gentle, precise product metering. This patented air distribution system divides product into equal sections—one for each primary line in the distribution system. Air and product are mixed in a parallel flow for a smooth transition from the meter box to the distribution system. An agitator bar prevents bridging for a constant supply of product to the meter roller. The New Holland system is power-efficient and easily adapts to various crop applications or large air seeding tools.



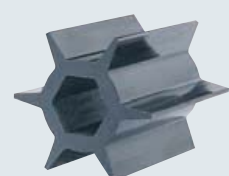
Extra Fine Rollers



Fine Rollers



Coarse Rollers



Extra Coarse Rollers

METER ROLLER OPTIONS

A wide range of meter roller designs provides you with accurate metering and efficient operation, for products ranging in size from the smallest forage seed to the largest bean. Select from four options: Extra Fine for very small seeds such as alfalfa, grass, canola, and grain sorghum at very low rates; Fine rollers for accurately seeding wheat, barley, oats, flax, millet, and moderate rates of fertilizer; Coarse for solid-seeding larger seeds such as peas, beans and applying high rates; Extra Coarse for very large fragile seeds such as large beans and high fertilizer rates.

ADVANCED MONITORING AND CONTROL

The IntelliView™ III and IntelliView™ IV displays take the guesswork out of in-field performance so you can operate with complete confidence and at peak efficiency. Both monitors feature color touchscreens that are easy to read in day or night. Both allow you to enter product rates on-the-go, and customize the information displayed so you can monitor systems at a glance. The user-friendly, animated graphics show real-time information, including bin level, ground speed, fan RPM and application rates in pounds per acre for each tank. The system includes onboard diagnostics to track critical functions with pop-up windows that alert you should tank levels become low or sensor failures occur. The displays are ISO 11783 compliant, and can be used to operate other implements using the ISO 11783 engineering standard. The larger 10.4-inch IntelliView IV display is fully portable and features touchscreen navigation. This monitor can be used with data management features, mapping and the optional IntelliSteer™ auto guidance system.



You can customize the information displayed on the IntelliView™ III (above left) or the 10.4-inch IntelliView™ IV screen (above right). Transferring information in and out of the monitors is accomplished with a USB memory stick.



With mechanical drive, you select the exact rate you want simply and accurately with a slide adjustment without changing sprockets or chains.



Variable rate metering uses an independent drive for each meter for precise metering even at low roller speed. This allows you to electronically control product rates on-the-go from the cab. It also allows you to utilize field mapping and fully integrate your seeding and fertilization into your precision agriculture activities.

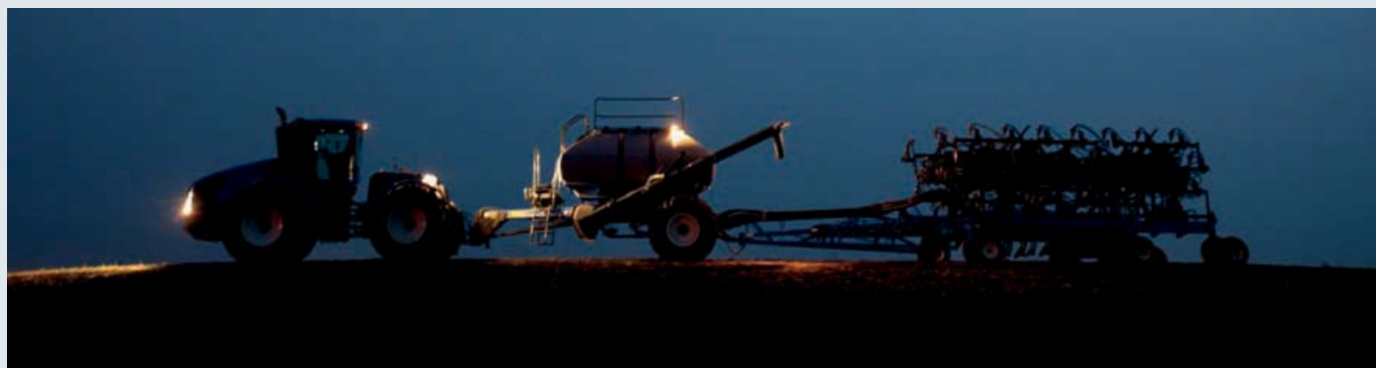
P2050 AIR HOE DRILL

3-Section Model, ft. (m)		27' (8.2)	28' (8.5)	33' (10.1)	34' (10.4)	39' (11.9)	40' (12.2)
Dimensions							
Transport, ft. (m)	Length	29' (8.8)	29' (8.8)	29' (8.8)	29' (8.8)	29' (8.8)	29' (8.8)
ft. in. (m)	Height	11' 6" (3.5)	11' 6" (3.5)	14' 6" (4.4)	14' 6" (4.4)	17' 6" (5.3)	17' 6" (5.3)
ft. in. (m)	Width	20' 6" (6.2)	20' 6" (6.2)	20' 6" (6.2)	20' 6" (6.2)	20' 6" (6.2)	20' 6" (6.2)
Number of Shanks/Interrow Coulters							
Spacing, in. (cm)	7.2" (18.3)	45/NA	—	55/NA	—	65/NA	—
in. (cm)	10" (25.4)	—	34/17	40/20	—	—	48/24
in. (cm)	12" (30.5)	—	28/14	—	34/17	—	40/20
5-Section Model, ft. (m)		45' (13.7)	46' (14.0)	51' (15.5)	52' (15.8)	58' (17.7)	—
Dimensions							
Transport, ft. (m)	Length	29' (8.8)	29' (8.8)	29' (8.8)	29' (8.8)	—	—
ft. in. (m)	Height	13' 6" (4.1)	13' 6" (4.1)	17' 6" (5.3)	17' 6" (5.3)	—	—
ft. in. (m)	Width	20' 6" (6.2)	20' 6" (6.2)	20' 6" (6.2)	20' 6" (6.2)	—	—
Number of Shanks							
Spacing, in. (cm)	7.2" (18.3)	75	—	85	—	—	—
in. (cm)	10" (25.4)	—	56	62	—	—	—
in. (cm)	12" (30.5)	—	46	—	52	—	—
Tires							
P2050 Configuration ft. (m)							
		27, 28, 33 and 34' (8.2, 8.5, 10.1 and 10.4)		39, 40, 45 and 46' (11.9, 12.2, 13.7 and 14.0)		51 and 52' (15.5 and 15.8)	
		Single caster tires on front (11L-15FI D-Rating - 6-bolt hubs)		Dual caster tires on front (9.5L-15FI D-Rating - 6-bolt hubs)		Dual caster tires on front (11L-15FI D-Rating - 6-bolt hubs)	
		Tires on rear walking beams (9.5L-15FI D-Rating - 6-bolt hubs)		Tires on rear walking beams (9.5L-15FI D-Rating - 6-bolt hubs)		Tires on rear walking beams (11L-15FI D-Rating - 6-bolt hubs)	
		Tires on wing sections (9.5L-15SL 6-ply - 6-bolt hubs)		Tires on wing sections (9.5L-15SL 6-ply - 6-bolt hubs)		Tires on wing sections (9.5L-15SL 6-ply - 6-bolt hubs)	
Spacing							
4-row, in. (cm)		7.2", 10" or 12" (18.3, 25.4 or 30.5) spacings					
Frame/Ground Clearance							
in. (cm)		28" to 32" (71.1 to 81.3) depending on openers and depth settings					
Trip/Shank Assemblies							
lb. (kg) in. (cm)		350 (160) with 1" x 2" (2.5 x 5.1) shank, 2 1/4" (5.7) centers fit 50° sweeps					
lb. (kg) in. (cm)		550 (250) with 1" x 2" (2.5 x 5.1) shank, 2 1/4" (5.7) centers fit 50° sweeps					
Press Wheels							
Rubber, in. (cm)		3 x 22 (7.6 x 55.9)					
in. (cm)		4 x 22 (10.2 x 55.9)					
in. (cm)		5 1/2 x 22 (14 x 55.9)					
Steel, in. (cm)		3 1/2 x 22 (8.9 x 55.9)					
in. (cm)		4 1/2 x 22 (11.4 x 55.9)					

OPTIONS

- Shim kits to lower shanks behind tractor wheels
- Single or dual end markers
- Press wheel mud scrapers
- Tow hitch for NH₃ cart
- Bolt-on caps for steel press wheels
- 1-bar heavy harrow for 4-row configuration
- Dual offset caster for the center section of 27', 28', 33' and 34' (8.2, 8.5, 10.1 and 10.4 m) models
- Dual offset caster for the wing sections (all models)

ASAE 279.11 transport lighting is standard equipment



P2060 AIR HOE DRILL

Models	60' (18.3)	70' (21.3)
Base Size, ft. (m)		
No. of sections	5	5
No. of ranks	4	4
Working Widths, ft. (m) (Outside Shank to Outside Shank + Spacing)		
7.5 in. (19.1 cm), spacing	60' (18.3)	N/A
10 in. (25.4 cm), spacing	60' (18.3)	70' (21.3)
12 in. (30.5 cm), spacing	60' (18.3)	70' (21.3)
Number of Shanks		
7.5 in. (19.1 cm), spacing	96	N/A
10 in. (25.4 cm), spacing	72	84
12 in. (30.5 cm), spacing	60	70
Frame Widths, ft. in. (m)		
Main frame	10' 0" (3.05)	10' 0" (3.05)
Inner wing	15' 0" (4.57)	15' 0" (4.57)
Outer wing	10' 0" (3.05)	15' 0" (4.57)
Transport width	17' 8" (5.38)	17' 8" (5.38)
Transport height (max)	13' 6" (4.11)	13' 6" (4.11)
Weights, lb. (kg) (All with 350 lb. trips and 3 in rubber packers)		
7.5 in. (19.1 cm), spacing	36,300 (16,466)	N/A
10 in. (25.4 cm), spacing	32,800 (14,878)	36,500 (16,556)
12 in. (30.5 cm), spacing	31,100 (14,107)	34,400 (15,604)
Tires		
Main frame casters	11Lx15FI (Duals)	11Lx15FI (Duals)
Inner wing casters	11Lx15FI (Duals)	11Lx15FI (Duals)
Outer wing casters	11Lx15FI (Singles)	11Lx15FI (Singles)
Rear transport wheels	11Lx15FI (Single)	11Lx15FI (Single)
Packer options, 7.5 in. (19.1 cm), spacing	Steel - 3-1/2" / Rubber - 3" In-line gang style	
Packer options, 10 in. and 12 in. (25.4 or 30.5 cm), spacing	Steel - 3-1/2", 4-1/2" / Rubber - 3", 4", 5-1/2" / In-line gang style 5.9" or 6-1/2" pneumatic walking beam style	
Packer wheel mud scrapers	Optional for steel and rubber wheels	
Stone kickers	Standard	
Openers	C shank or edge-on stealth available	
Seed boots	Wide range of ground engaging tools available	
Air kits	Single shoot and double shoot available	
Blockage monitors	Basic or expanded blockage monitors available; pin sensors and optical sensors	
Tandem wheels for center	Standard; also 12.5 X 15 FI D high-flotation available	
Tandem wheels for wings	Optional; also 12.5 X 15 FI D high-flotation available	
In-frame harrow	Optional single-bar heavy harrow	
Disc levellers	Optional	
Trip assemblies, 7.5 in. (19.1 cm), spacing	350 lb. & 550 lb	
Trip assemblies, 10 in. and 12 in. (25.4 or 30.5 cm), spacing	350 lb. & 550 lb.	
Trip assemblies	1" x 2" 50° C-shank or 1" x 2" 84° edge-on	
Rank to rank spacing, in. (cm)	26 (66)	
Frame depth, in. (cm)	108 (274.3)	
Caster to packer depth, in. (cm)	148 (375.9) at 1-inch/2.54 cm of seeding depth	
Frame/ground clearance	28 to 32 (71.1 to 81.3) depending on openers	
Hydraulic system	High-quality parallel cylinders performing both depth and wing lift. functions	
Depth control	Each wing follows ground independently (not affecting adjacent sections); single point adjustment	
Safety chain and lights	Standard	
Transport locks	Standard	
Rear tow hitch	Optional; patented steering design to aid in cornering and limit sidehill skewing	
Packing pressure adjustment	Each frame section independently adjustable	

P2070 AIR HOE DRILL

Base Size	50 (15.3)	60 (18.3)	70 (21.3)
No. of sections	3	5	5
No. of ranks	3	3	3
Working Widths, ft. (m) (outside shank to outside shank + spacing)			
10 (25.4) in. (cm)	50 (15.3)	60 (18.3)	70 (21.3)
12 (30.5) in. (cm)	50 (15.3)	60 (18.3)	70 (21.3)
Number of Shanks			
10 (25.4) in. (cm)	60	72	84
12 (30.5) in. (cm)	50	60	70
Frame Widths, ft. (m)			
Main frame	10' (3.05)	10' (3.05)	10' (3.05)
Inner wing	10' (3.05)	15' (4.57)	15' (4.57)
Outer wing	10' (3.05)	10' (3.05)	15' (4.57)
Transport width	18.4' (5.61)	18.4' (5.61)	18.4' (5.61)
Transport height (max.)	16.6' (5.03)	16.6' (5.03)	16.6' (5.03)
Base Machine Weights - lbs. (kg) est.			
10 in. (25.4 cm) spacing	28,637 (13017)	33,898 (15408)	37,985 (17266)
12 in. (30.5 cm) spacing	27,592 (12542)	32,646 (14839)	36,526 (16603)
Tires			
Main frame casters	11Lx15FI (Duals)	11Lx15FI (Duals)	11Lx15FI (Duals)
Inner wing casters	11Lx15FI (Duals)	11Lx15FI (Duals)	11Lx15FI (Duals)
Outer wing casters	11Lx15FI (Singles)	11Lx15FI (Singles)	11Lx15FI (Singles)
Rear transport wheels	11Lx15FI (Singles)	11Lx15FI (Singles)	11Lx15FI (Singles)
Packing	Individual on row		
Packing wheels	Smooth profile 4.8x8		
Openers	Double shoot, side band (2" lateral, 1" vertical separation)		
Air kits	Double shoot		
Blockage monitor	Basic or expanded blockage monitors available; pin sensor and optical		
Tandem wheels for center	Standard; high floatation 12.5Lx15FI available		
Tandem wheels for inner wing	Standard; high floatation 12.5Lx15FI available		
Tandem wheels for outer wing	N/A; high floatation available Option; high floatation 12.5Lx15FI available		
Trip assemblies 10 in. (25.4 cm)	Fully adjustable from 275-550 lbs.		
Trip assemblies 12 in. (30.5 cm)	Fully adjustable from 275-550 lbs.		
Rank to rank spacing, in. (cm)	39 (99)	39 (99)	39 (99)
Frame/ground clearance, in. (cm)	30 (76.2)	30 (76.2)	30 (76.2)
Hydraulic system	High-quality cylinders performing both depth and wing lift functions		
Depth control	Individual opener depth control		
Safety chains and lights	Standard		
Transport locks	Standard		
Rear tow hitch	Standard auxiliary hitch		
Packing pressure adjustment	In cab electronic adjustment of packing pressure		



AIR CARTS

Models	P1030	P1040	P1050	P1060	P1070
Capacity, bu. (l)	280 (9866)	330 (11628)	380 (13390)	430 (15153)	580 (20438)
Compartments	Two	Two	Three	Three	Three
Splits, bu. (l)					
Tow between	169/118 (5955/4148)	186/142 (6554/5004)	169/93/118 (5955/3277/4148)	186/102/142 (6554/3594/5004)	NA
Tow behind	169/118 (5955/4148)	186/142 (6554/5004)	118/93/169 (4158/3277/5955)	142/102/186 142/102/186 (5004/3594/6554)	135/183/262 (4757/6449/9233)
Dimensions					
Ground clearance, in. (m)	25 (0.64)	25 (0.64)	25 (0.64)	25 (0.64)	25.2 (0.64)
Height, ft. in. (m)	14' 11" (4.3)	15' 3" (4.65)	14' 11" (4.3)	15' 3" (4.65)	15.3' (4.67)
Overall width, ft. in. (m)					
Single wheels	12' 6" (3.81)	12' 6" (3.81)	12' 8" (3.86)	12' 8" (3.86)	12' 8" (3.86)
Dual wheels	16' 8" (5.08)	16' 8" (5.08)	16' 2" (4.93)	16' 2" (4.93)	16' 8" (5.08)
Length, ft. in. (m)					
Tow behind		25' 4" (7.72)		28' 3" (8.61)	35' 8" (10.9)
Tow between		26' 4" (8)		29' 4" (8)	NA
Weight (empty), lb. (kg)	10, 013 (4546)	10,052 (4569)	10, 900 (4955)	11,090 (5040)	16,050 (7295)
Tires					
Front caster (on tow-behind model only)			Dual, 22.5 x 16.1 STII tires		30.5L x 32, 12 ply AWT single tire
All Models					
Rear axle, in. (m)			30.5L x 32, 12 ply AWT single tire @ 120" (3.05) tracking width		
Valves	Single-/double-shoot	Single-/double-shoot	Single-/double-shoot	Single-/double-shoot	Single-/double-shoot
Primary lines	Up to 8	Up to 8	Up to 8	Up to 8	Up to 8
Fan drive	Hydraulic dual fan	Hydraulic dual fan	Hydraulic dual fan	Hydraulic dual fan	Hydraulic dual fan
Meter drive system			Mechanical ground drive or Variable rate hydraulic		Variable rate hydraulic
Fill auger, in. (cm) x ft. (m)			10" (25.4) x 19' (5.8) steel cupped flighting		
Bin level depth gauge (ultrasonic)	2	2	3	3	3
Air velocity sensors	2	2	3	3	3
Fan RPM/air damper control from monitor	1	1	1	1	1

*Estimated weights

OPTIONS

- Single fan
- Variable rate electro-hydraulic drive
- Center pull rear hitch (tow-behind models only)
- Field lighting package
- Transport beacon warning light
- Rear axle duals
- High floatation tires
- Work switch
- Optical or pin flow monitoring system

INTELLIVIEW III AND INTELLIVIEW IV MONITORS

	IntelliView III	IntelliView IV
Color screen	X	X
Easy to read day and night	X	X
Display size	7 inch display	Large 10.4-inch
Control	Touch Screen	Touch Screen
ISO 11783 compliant	X	X
On the go rate change	X (Variable drives only)	X
Built in switch boxes	X	X
Real-time animated graphics	X	X
Configurable display	X	X
Information pop up windows	X	X
Built-in screen instructions	X	X
Information transfer	USB memory stick port	USB memory stick port





VALUE, SERVICE AND SOLUTIONS

There's a certain way of thinking that comes from living on a farm. Farming takes equal parts brain and brawn. Not to mention thick skin, calloused hands and a fair share of know how. Seasoned farmers know it helps to have equipment that's built by farmers, sold by farmers and used by farmers. You might call that instinct, but we call it FARM RAISED.

Support at every step. When you place your confidence in New Holland agricultural equipment, you get the finest in local support. Your New Holland dealer understands the many challenges you face and stands behind you at every step with the equipment, parts, service and financial solutions to make your job easier. Look to New Holland for a complete selection of equipment, including a full line of tractors, hay & forage equipment, harvesting, crop production and material handling equipment.

Quality parts and service. Turn to your New Holland dealer after the sale for expert, factory-trained service and genuine New Holland-branded parts. Your dealer has the very latest service updates and training to ensure your equipment keeps working productively season after season.

Financing solutions. Your New Holland dealer can tell you about smart ways to turn your financial challenges into opportunities with a portfolio of innovative financial services available through CNH Capital, including customized financing, leasing, insurance and the purchasing convenience of a Commercial Revolving Account.

For reliable equipment, parts and service — or just honest advice on farming and finance — turn to New Holland and your trusted New Holland dealer. We know. We're farmers, too.

NEW HOLLAND TOP SERVICESM

TOTAL SUPPORT, TIMELY INFORMATION FOR NEW HOLLAND CUSTOMERS.



TOP AVAILABILITY

Year-round support and information — just by calling one toll-free number.

TOP SPEED

Express parts delivery when and where you need it.

TOP PRIORITY

Fast-track solutions maximize your productivity — because your harvest can't wait.

TOP SATISFACTION

We drive and track the solution you need, keeping you informed — until you are back to work.

TOP SERVICE IS MANAGED IN CLOSE PARTNERSHIP WITH NEW HOLLAND DEALERS AND SERVICE TEAMS.



We are proud to support the FFA.

Learn more at www.newholland.com/na

Design, materials and/or specifications are subject to change without notice and without liability therefor. Specifications are applicable to units sold in Canada, the United States, its territories and possessions, and may vary outside these areas.

© 2012 CNH America LLC. All rights reserved. New Holland and CNH Capital are registered trademarks of CNH America LLC. Any trademarks referred to herein, in association with goods and/or services of companies other than CNH America LLC, are the property of those respective companies.



Safety begins with a thorough understanding of the equipment. Always make sure you and your operators read the Operator's Manual before using the equipment. Pay close attention to all safety and operating decals and never operate machinery without all shields, protective devices and structures in place.