

**TANDEM VIBRATORY COMPACTOR  
450DX**

**CASE**  
CONSTRUCTION



**WE MAKE MACHINES  
THAT BUILD THE NATION**

CaseCE.com  
**EXPERTS FOR THE REAL WORLD**  
**SINCE 1842**

# FEATURES OF THE SMALL WONDER

## SUNROOF

- Large sunroof for protection of the operator from sun and rain

## COMPACT DESIGN

- Equal distribution of weight for even compaction
- Even distribution of load during transportation

## COMPACTION & SERVICE ROADS

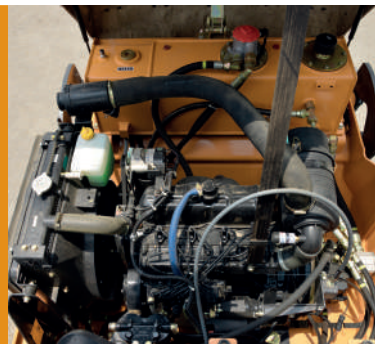
- High kerb clearance for effective operation alongside culverts
- Ideally suited for shoulder compaction & service roads

## GROUND CLEARANCE

- High ground clearance for working on uneven surfaces



## WORLD-CLASS HYDRAULIC COMPONENTS



## EASY ACCESS

Easy accessibility to all components for quick and effortless maintenance.

# TANDEM VIBRATORY COMPACTOR 450DX



## **CONTROLS**

- Simple and functional control panel
- Rugged electrical connections

## **VENTILATED ENGINE**

- Well ventilated engine compartment

## **WATER SPRINKLER SYSTEM**

- Pressurised water sprinkler system for use on asphalt single pump operation

## **ANTI-VIBRATION MOUNTS**

- Large anti-vibration mounts for effective isolation and long life



**ARTICULATION  
LOCK FOR  
TRANSPORTATION**



**HIGH  
STEERING  
ANGLE**



**SPECIFICATIONS**

**ENGINE**

Engine.....45H @ 2300 RPM as per BS-III  
 Make.....Mahindra & Mahindra Industrial  
 Maximum Gross Torque..... 159 NM @1400 RPM  
 Cooling.....Water

**POWERTRAIN**

Working Speed..... 0-12 Kmph  
 Travel Speed.....0-12 Kmph  
 Gradeability with/without vibration..... 25/30 %

**STEERING**

Steering.....Hydrostatic (Center Point Articulation)  
 Steering Angle (either side).....33°  
 Turning Radius.....3 m  
 Oscillation Angle - each side..... 10°

**BRAKES**

Sevice Brake..... Hydrostatic  
 Parking Brake.....Spring applied, hydraulically released on rear drum

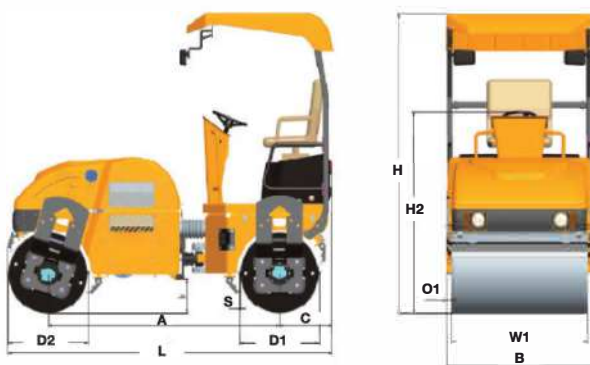
**SERVICE CAPACITIES**

Hydraulic Oil Filter.....Travel & Vibration Circuit Filter - tank mounted type  
 Sprinkler System.....Pressurized  
 Water Pump.....Electric diaphragm  
 Nozzles..... 6 Nozzles per drum  
 Water Tank Capacity..... 110 L  
 Diesel Tank Capacity.....45 L  
 Hydraulic Tank Capacity.....45 L  
 Drum Scrapper.....2 Scrapper per Drum

Note: All parameters are within +/-2.5% of the specified values.  
 Specifications are subject to change without notice.

**DIMENSIONS**

<b>A</b>	2123	<b>H1</b>	2680	<b>O1</b>	70
<b>B</b>	1360	<b>H2</b>	1775	<b>S</b>	12
<b>C</b>	495	<b>K</b>	290	<b>W1=W2</b>	1250
<b>D1=D2</b>	725	<b>L</b>	2990		



**INSTRUMENTATION**

**CONTROLS**

- Fuel level Indicators
- Hydraulic Oil Level Indicator
- Front & rear light switch
- Vibration cut off switch
- Hour meter
- Drum & Frequency selection switch
- Engine water temperature gauge
- Engine lub oil pressure gauge
- Ignition switch

**INDICATORS**

- Neutral
- Battery Charging
- Lube Oil Pressure
- Parking Brake
- Tum & Hazard indicator
- Filter clogging

**SAFETY FEATURES**

- MCB Protection
- Automatically applied parking brake in case of engine shutdown & no vibration in neutral

**VIBRATION SYSTEM**

<b>Vibration Stage</b>	2
<b>Frequency High - HF</b>	65 Hz
<b>Frequency Low - LF</b>	55 Hz
<b>Amplitude</b>	0.6 mm
<b>Centrifugal Force (Kgf) HF per Drum</b>	4360
<b>Centrifugal Force (Kgf) LF per Drum</b>	3120
<b>Maximum applied Force (Kgf) per Drum</b>	6035

**OPERATING DATA**

<b>Operating Weight</b>	3225 kgs
<b>Front Axle Load</b>	1550 kgs
<b>Rear Axle Load</b>	1675 kgs
<b>Static Linear Load Front</b>	13,4 kgs/cm

**STANDARD EQUIPMENT**

- 2 Frequency
- Both drums or drum Vibration
- Sun roof
- Front and rear working lights
- Turn Indicator
- Hazard Lights & Parking Lights

Corporate Identity Number: U29240DL1998PTC344616  
**CASE NEW HOLLAND CONSTRUCTION EQUIPMENT (INDIA) PRIVATE LIMITED**  
 Level-4, Rectangle-1, D-4  
 District Center, Commercial Complex  
 Saket, New Delhi - 110017  
 Contact No.: 011-66544151 | Email:caseindia@cnhind.com

**NOTE:** CASE provides specific outfits for various countries and many optional fittings (OPT). The illustrations on this or other leaflets may relate to standard or optional fittings. Please consult your CASE dealer for any information in this regard and any possible updating on components. All dimensions are variable within 2.5% CNH Industrial reserves the right to modify machine specifications without incurring any obligation relating to such changes.

