

CX B-SERIES HYDRAULIC EXCAVATORS
CX800B

CASE
CONSTRUCTION



MAXIMUM POWER
AND COMFORT

www.casece.com

EXPERTS FOR THE REAL WORLD
SINCE 1842

MAXIMUM POWER AND COMFORT

Case has been at the cutting edge of the bulk earthmoving and muckshifting industry for many years. Case equipment plays a leading role in major infrastructure and construction projects around the world, with Case customers confident that they have the right machine to meet their needs

The CX800B takes Case to new levels of productivity and performance.

Boasting legendary durability and reliability, the CX800B is the most powerful machine in the Case line-up.



POWER TO PERFORM

The CX800B is powered by an EU Stage IIIA compliant Isuzu engine, offering 532 hp (397 kW) of power and an incredible 2,250 Nm of torque. This electronically-controlled power plant offers proven low fuel consumption and reduced exhaust emissions, yet has class-leading performance.

MASS EXCAVATION

The CX800B mass excavation is equipped with a 7.25 m main boom and an extra heavy duty 2.98 m dipperstick, for maximum penetration and increased loading productivity

ULTIMATE PRODUCTIVITY

Twin variable displacement hydraulic pumps provide up to 500 litres/min each of flow, allowing a dipper arm digging force of 317 kN and a bucket breakout force of 430 kN in mass excavation layout.

OPERATOR SATISFACTION

The expansive CX-B series cab offers class-leading levels of visibility and comfort for the operator. With increased glazed area, including a single piece right hand window, the operator has a commanding view of the working area.



SERVICE ACCESS

Large wide opening access doors and sturdy non-slip walkways on both sides of the machine provide ease of maintenance for technicians. All filters are centrally grouped with green oil drain facilities for engine oil. A hydraulically-driven cooling fan can be reversed on start up to blow out dust and debris.

CX B-SERIES HYDRAULIC EXCAVATORS

PRECISION CONTROL

Through the Case Intelligent Computer Command Control System (ICCCS) the operator has complete control of engine output and hydraulic power. With a choice of operating modes, the operator has a Superpower function, with automatic Power Boost, for maximum tearout and reduced cycle times.

Customer peace of mind is assured with total protection of the hydraulic system, thanks to a synthetic filter that ensures the lowest possible levels of contamination. This advanced filter provides hydraulic oil change intervals of up to 5,000 hours, reducing downtime and operating costs.

Dedicated boom and arm combinations, including a short stick mass excavation format, provide increased productivity in all operating conditions. The CX800B can handle buckets with capacities up to 5m³.



ENVIRONMENTAL RESPONSIBILITY

The CX800B uses the same well proven fuel efficient Isuzu six cylinder engine as the CX700B. However power is increased by 15% and torque is up by 13.6%, providing increased productivity and performance in all conditions. The engine is EU Stage IIIA compliant, offering low specific fuel consumption and cleaner exhaust emissions.

Pilot fuel injection and a hydraulically-driven cooling fan contribute to greatly reduced noise levels, both in the cab and outside the machine.



CX B-SERIES HYDRAULIC EXCAVATORS



IMPROVED VISIBILITY

The CXB series cab offers larger glazed area and reduced pillar width for improved all round visibility. Despite the slim pillars, the cab structure is up to three times stronger, reducing noise and vibration for the operator.



HYDRAULIC FORCE

With up to 500 litres of flow from each of the system's two variable displacement hydraulic pumps the CX800B has the power to perform in the toughest environment. Through the use of the ICCCS control system, the operator can achieve the perfect balance between performance and economy.



PROVEN DRIVELINE

All Case track components are designed for extended durability, proven in the most arduous working conditions across the world. Heat treated sprockets, improved track guides and increased pin hardness results in extended operating life. Three-piece undercarriage covers protect hydraulic lines.

DURABILITY AND RELIABILITY

Sturdy underbelly plates protect the underside of the machine. EMS Extended Maintenance System bushings, provide 1,000 hour greasing intervals on all pins except the attachment linkage. Anti-friction shims at the base of the boom limit friction and noise during operation.





APPLICATION SPECIFIC

A choice of general purpose dipper arms are available, with a short mass excavation arm suitable for the toughest digging and loading tasks. Dipper arm digging force is up to 317 kN with a bucket breakout force of 430 kN, providing the CX800B with the power to perform in quarry and rock applications.



INCREASED VERSATILITY

Not just an incredible earthmoving machine, the CX800B can be supplied with auxiliary hydraulic hoses to power a range of attachments. An 8m one piece boom is available for long reach applications and the machine has an attachment cushion control for both boom and arm.



CX B-SERIES HYDRAULIC EXCAVATORS



ULTIMATE ENVIRONMENT

The Case CXB range of hydraulic excavators feature one of the largest, most comfortable cabs in the business. Class-leading levels of visibility, thanks to larger glazed areas and slim pillars, provide the operator with an unparalleled view to the working area.

A comfortable fully reclining operator's seat, standard air conditioning with nine outlet louvres to distribute heat and ventilation ensure that the driver remains comfortable throughout the working day. Cup holders, a clock, a mobile phone holder, a built-in coolbox and numerous storage compartments make the Case cab the ideal environment to ensure maximum productivity.

The cab sits on isolating mountings that reduce noise and vibration, improving the working environment for the operator and boosting productivity.

PREMIUM CONTROL AND COMFORT

Multi-mode hydraulic control with Superpower and Power Boost provides the operator with maximum performance when required. The fully adjustable levers are fine tuned for perfect control, increasing operator confidence and boosting productivity. The CX-B cab is considerably larger, with up to 60 mm of additional foot space. The footrests and controls have been positioned for maximum comfort. Climate control air-conditioning is standard, with multiple air vents providing the optimum working environment for the operator.



SERVICE SIMPLICITY RESULTS IN REDUCED DOWNTIME

Wide walkways and large opening doors provide easy access to the filters, making regular maintenance easier and safer for service engineers. Green engine oil drain taps are supplied to ensure that there is no risk of contamination on sensitive ground.

The machine is equipped with a high flow electric refuelling pump with auto shut-off, which in combination with a large fuel tank results in reduced downtime. Electrical switches and connections are located in a centralised sealed cabinet within the cab, ensuring that sensitive electronics are protected from dust and weather ingress.



The CX800B uses Extended Maintenance System (EMS) bushings on all pins except for the attachment linkage. EMS bushings allow 1,000 hour greasing intervals, with 250 hour intervals on the attachment pins. Anti-friction shims further reduce wear on the boom foot and head linkage, cutting noise and operating cost for the customer.



CX B-SERIES HYDRAULIC EXCAVATORS

VERSATILE PERFORMANCE

Superpower mode provides speed priority when needed, to increase performance and optimise fuel efficiency. Class-leading digging forces ensure maximum productivity in a range of operating conditions.

Automatic high dump mode reduces cycle times while an advanced throttle control combines with the mode selector to provide the operator with total control of the machine.

Heavy duty boom and arm design, with cast boom foot and additional steel plate in stress relief points ensures maximum durability and reliability. Mass excavation dipper arm is constructed of extra thick materials with additional structural reinforcing, to provide long service life and maximum productivity.



SPECIFICATIONS

CX800B

ENGINE

Make _____ ISUZU
 Type _____ AH-6WG1XYSS-02
 Water-cooled, 4-cycle diesel, 6-cylinder in line, direct injection,
 Turbocharger with air cooled intercooler, without cooling fan
 Number of cylinders _____ 6
 Bore/Stroke _____ 147 x 154 mm
 Horsepower 80/1269/EEC _____ 532 hp (397 kW) @ 1800 rpm
 Maximum torque 80/1269/EEC _____ 2250 Nm @ 1500 rpm

HYDRAULIC SYSTEM

Max output _____ 2 x 500 l/min @ 1800 rpm
 2 variable displacement axial piston pumps _____ Yes
 Attachment _____ 31.4 MPa
 Swing circuit _____ 26.5 MPa
 Travel _____ 34.3 Mpa

SWING

Max upperstructure swing speed _____ 6.4 rpm

TRAVEL

Travel motor _____ Variable displacement axial piston motor
 Max travel speed _____ 4.2 km/h (Automatic travel speed shifting)
 Low travel speed _____ 2.9 km/h
 Gradeability _____ 70% (35°)
 Drawbar pull _____ 565 kN

BUCKET

Heavy duty bucket with teeth/Toplok

SAE Heaped Capacity	l	2400	2780	3300	3700	4100	5000
Width	mm	1300	1450	1650	1800	1900	2300

Extreme duty bucket with Toplok

SAE Heaped Capacity	l	2400	2780	3300	3700	4100
Width	mm	1300	1450	1650	1800	1900

Rock

SAE Heaped Capacity	l	4110
Width	mm	1800

ELECTRICAL SYSTEM

Circuit _____ 24V
 Alternator _____ 50 Amp

UNDERCARRIAGE

Number of carriers rollers (each side) _____ 3
 Number of track rollers (each side) _____ 8
 Number of shoes each side _____ 51
 Type of shoe _____ Double grouser shoe

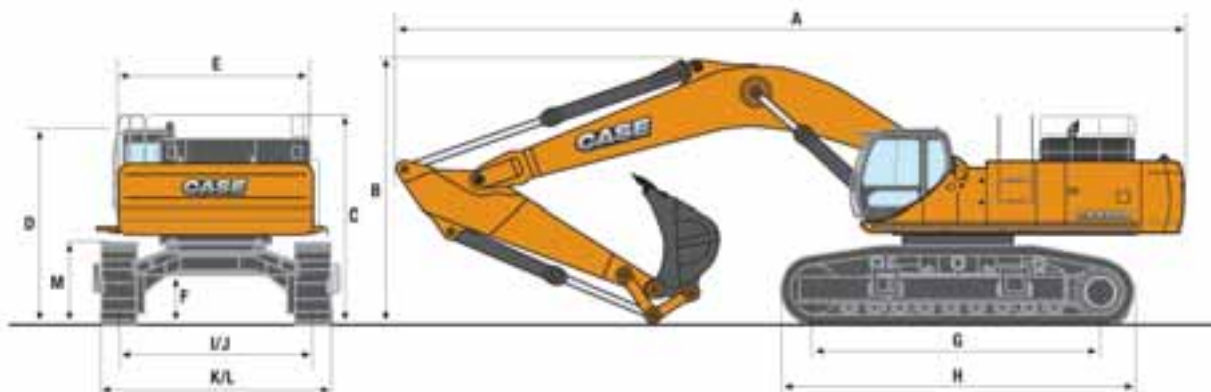
CIRCUIT AND COMPONENT CAPACITIES

Fuel tank _____ 900 l
 Hydraulic system _____ 720 l
 Engine cooling system _____ 133 l

CX B-SERIES HYDRAULIC EXCAVATORS

GENERAL DIMENSIONS

With 8.40 m standard boom



		Arm 3.66	Arm 4.44	Arm 5.62	
	Overall length (without attachment)	mm	7640	7640	7640
A	Overall length (with attachment)	mm	14360	14320	13830
B	Overall height (with attachment)	mm	4810	5000	6300
C	Overall height (without attachment)	mm	3880	3880	3880
D	Cab height	mm	3570	3570	3570
E	Upper structure overall width (without catwalks)	mm	3470	3470	3470
	Upper structure overall width (with catwalks)	mm	4250	4250	4250
	Swing (rear end) radius	mm	4300	4300	4300
	Clearance height under upper structure	mm	1590	1590	1590
F	Minimum ground clearance	mm	890	890	890
G	Wheel base (Center to center of wheels)	mm	5070	5070	5070
H	Crawler overall length	mm	6360	6360	6360
I	Track gauge (Extended)	mm	3450	3450	3450
J	Track gauge (Retracted)	mm	2830	2830	2830
K	Undercarriage overall width (Extended) (with 650 mm shoes)	mm	4360	4360	4360
L	Undercarriage overall width (Retracted) (with 650 mm shoes)	mm	3740	3740	3740
M	Crawler tracks height	mm	1500	1500	1500

WEIGHT AND GROUND PRESSURE

With 3.66 m Arm, 3.3 m³ bucket, operator, lubricant, coolant and full fuel tank

	Weight (kg)	Ground pressure (MPa)
650 mm grouser shoe	80.300	0.11

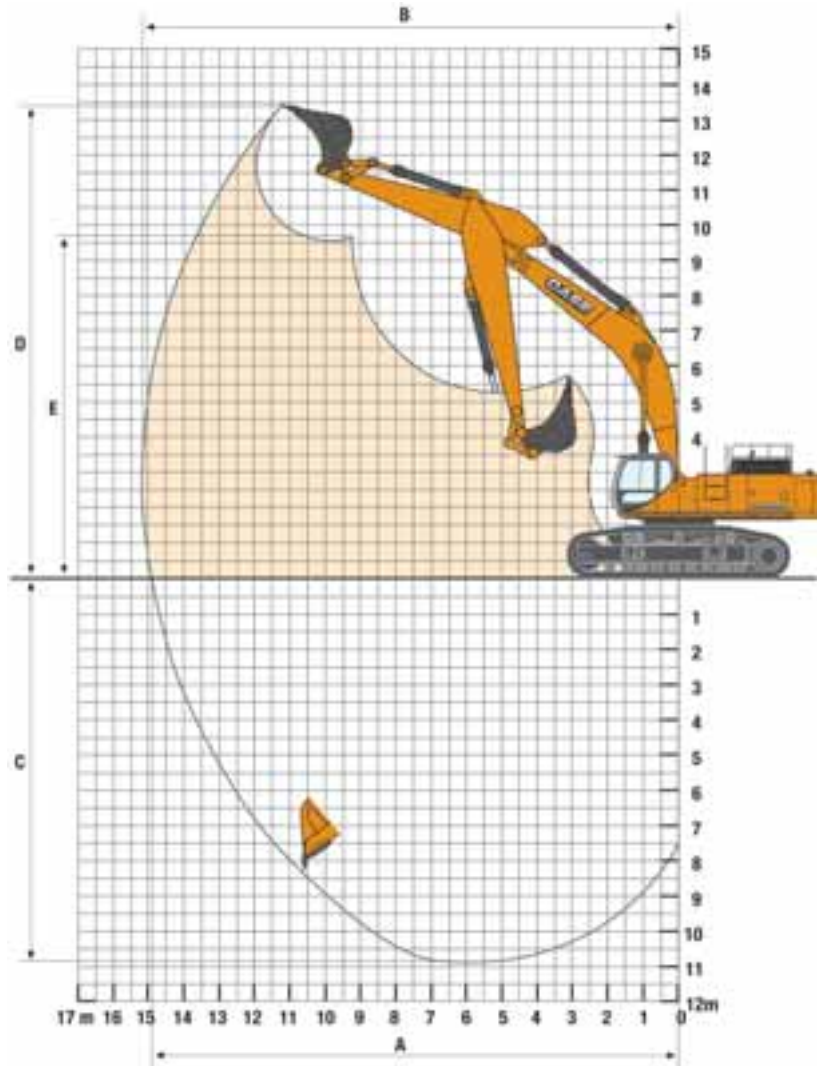
MASS EXCAVATOR

With 2.98 m Arm, 4.1 m³ bucket, operator, lubricant, coolant and full fuel tank

	Weight (kg)	Ground pressure (MPa)
650 mm grouser shoe	80.400	0.11

PERFORMANCE DATA

With 8.40 m standard boom



		Arm 3.66 m	Arm 4.44 m	Arm 5.62 m
Boom length	mm	8400	8400	8400
Bucket radius	mm	2200	2200	2200
Bucket wrist action	°	167	167	167
A Maximum reach at GRP	mm	13840	14680	15860
B Maximum reach	mm	14120	14940	16110
C Max. digging depth	mm	8690	9470	10560
D Max. digging height	mm	12910	13600	14300
E Max. dumping height	mm	8920	9510	10170
Arm digging force	kN	274	232	195
Bucket digging force	kN	330	330	330

SPECIFICATIONS

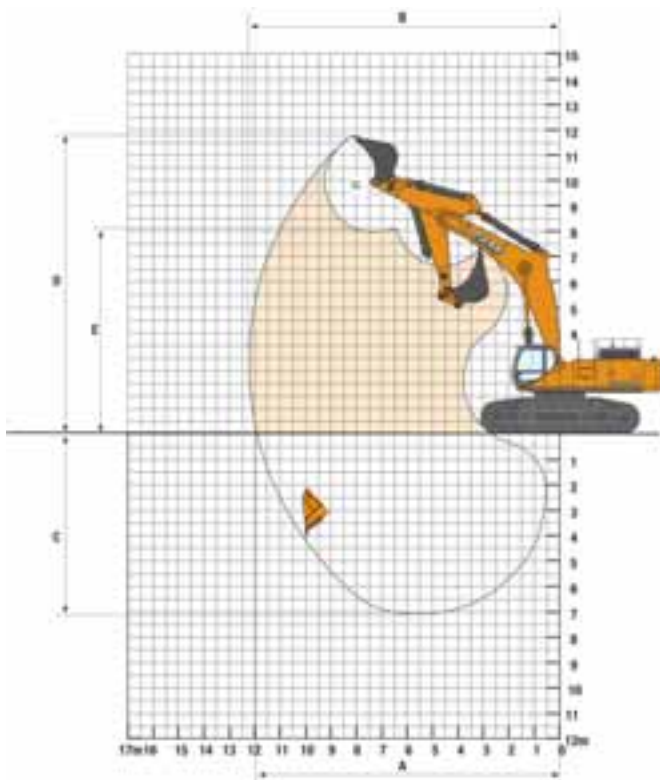
CX800B MASS EXCAVATOR

GENERAL DIMENSIONS



		Arm 2.98
	Overall length (without attachment)	mm 7640
A	Overall length (with attachment)	mm 13230
B	Overall height (with attachment)	mm 5000
C	Overall height (without attachment)	mm 3880
D	Cab height	mm 3570
E	Upper structure overall width (without catwalks)	mm 3470
F	Upper structure overall width (with catwalks)	mm 4250
	Swing (rear end) radius	mm 4300
G	Clearance height under upper structure	mm 1590
H	Minimum ground clearance	mm 890
I	Wheel base (Center to center of wheels)	mm 5070
J	Crawler overall length	mm 6360
K	Track gauge (Extended)	mm 3450
L	Track gauge (Retracted)	mm 2830
M	Undercarriage overall width (Extended) (with 650 mm shoes)	mm 4360
N	Undercarriage overall width (Retracted) (with 650 mm shoes)	mm 3740
O	Crawler tracks height	mm 1500

PERFORMANCE DATA



		Arm 3.66 m
	Boom length	mm 7250
	Bucket radius	mm 2200
	Bucket wrist action	° 162
A	Maximum reach at GRP	mm 11990
B	Maximum reach	mm 12310
C	Max. digging depth	mm 7030
D	Max. digging height	mm 11760
E	Max. dumping height	mm 7890
	Arm digging force	kN 317
	Bucket digging force	kN 430

LIFTING CAPACITY

Front 360°	REACH															
	3.0 m	4.5 m	6.0 m	7.5 m	9.0 m	10.5 m	12.0 m	13.5 m	At max reach							

Standard arm. 3.66 arm length, 3.3 m³ (2994.4 kg) bucket, 650G shoes, max reach 12.13 m

9.0 m																	7360*	7360*	10.4
7.5 m								12850*	12850*	11290*	11290*						7346*	7346*	11.2
6.0 m								13801*	13801*	12503*	11335						7530*	7530*	11.7
4.5 m			32725*	32725*	22604*	22604*	17776*	17776*	14966*	14183	13168*	10830	7956*	7956*			7908*	7908*	12
3.0 m					25851*	24969	19692*	17794	16140*	13347	13868*	10309	9908*	8090			8510*	7925	12.1
1.5 m			15457*	5457*	27923*	23350	21169*	16708	17110*	12631	14455*	9846	10222*	7820			9406*	7746	12.1
0 m			20263*	20263*	28625*	22508	21967*	15989	17697*	12108	14780*	9497					10734*	7841	11.8
-1.5 m	17914*	17914*	26831*	26831*	28178*	22196	21989*	15618	17750*	11807	14674*	9304					12777*	8259	11.3
-3.0 m	25229*	25229*	34435*	34435*	26711*	22248	21162*	15548	17101*	11737	13858*	9314					13550*	9130	10.7
-4.5 m	33215*	33215*	30442*	30442*	24102*	22609	19285*	15763	15412*	11933							13795*	10766	9.66
-6.0 m			24639*	24639*	19891*	19891*	15787*	15787*									13655*	13655*	8.3

Long arm. 4.44 arm length, 3.0 m³ (2893 kg) bucket, 650G shoes, max reach 13.06 m

10.5 m																	4567*	4567*	10.5
9.0 m										8304*	8304*						4323*	4323*	11.5
7.5 m										10495*	10495*	5225*	5225*				4232*	4232*	12.2
6.0 m									12694*	12694*	11585*	11570	8011*	8011*			4265*	4265*	12.7
4.5 m							16423*	16423*	13965*	13965*	12356*	11025	10044*	8515			4412*	4412*	12.9
3.0 m			26410*	26410*	24134*	24134*	18551*	18313	15287*	13625	13181*	10456	11734*	8161			4681*	4681*	13.1
1.5 m			18446*	18446*	26852*	24050	20341*	17087	16457*	12828	13925*	9932	12148*	7829			5099*	5099*	13
0 m	9622*	9622*	19719*	19719*	28281*	22859	21520*	16202	17292*	12206	14452*	9508	12383*	7565			5715*	5715*	12.8
-1.5 m	15066*	15066*	23858*	23858*	28497*	22273	21961*	15668	17649*	11795	14622*	9225	10595*	7411			6627*	6627*	12.3
-3.0 m	20696*	20696*	29696*	29696*	27638*	22114	21595*	15444	17390*	11605	14252*	9112					8030*	7719	11.7
-4.5 m	26995*	26995*	33444*	33444*	25679*	22289	20294*	15501	16299*	11648	12974*	9224					10382*	8849	10.8
-6.0 m	34495*	34495*	28531*	28531*	22342*	22342*	17719*	15853	13856*	11987							12272*	10914	9.6
-7.5 m			21231*	21231*	16872*	16872*	12869*	12869*									11599*	11599*	7.94

S-Long arm. 5.62 arm length, 2.4 m³ (2590.2 kg) bucket, 650G shoes, max reach 14.29 m

10.5 m																	3828*	3828*	12
9.0 m													6375*	6375*			3607*	3607*	12.8
7.5 m													7740*	7740*			3503*	3503*	13.5
6.0 m											10130*	10130*	8911*	8911*	5432*	5432*	3492*	3492*	13.9
4.5 m									12267*	12267*	11012*	11012*	10123*	8773	6713*	6713*	3568*	3568*	14.2
3.0 m			29671*	29671*	20952*	20952*	16459*	16459*	13759*	13759*	11981*	10759	10739*	8343	7620*	6518	3733*	3733*	14.3
1.5 m			25500*	25500*	24432*	24432*	18635*	17731	15176*	13195	12916*	10134	11336*	7924	8119*	6254	4001*	4001*	14.3
0 m			20736*	20736*	26827*	23464	20322*	16569	16337*	12406	13694*	9593	11817*	7559	7853*	6030	4395*	4395*	14
-1.5 m	12661*	12661*	22080*	22080*	28017*	22408	21346*	15765	17096*	11820	14196*	9178	12071*	7283	6044*	5887	4965*	4965*	13.6
-3.0 m	16883*	16883*	25848*	25848*	28090*	21888	21627*	15299	17337*	11453	14295*	8917	11945*	7130			5796*	5796*	13.1
-4.5 m	21857*	21857*	31433*	31433*	27092*	21772	21088*	15131	16925*	11310	13811*	8835	10073*	7153			7063*	6918	12.3
-6.0 m	27874*	27874*	32922*	32922*	24912*	21999	19555*	15245	15618*	11404	12371*	8981					9165*	8144	11.2
-7.5 m	35591*	35591*	27509*	27509*	21180*	21180*	16606*	15670	12818*	11808							10622*	10362	9.85
-9.0 m					14947*	14947*	10999*	10999*									9695*	9695*	7.95

S-Long arm. 5.62 arm length, 2.4 m³ (2590.2 kg) bucket, 650G shoes, max reach 14.29 m

9.0 m																	11951*	11951*	8.14
7.5 m									12706*	12706*							11849*	11849*	9.12
6.0 m							17649*	17649*	15806*	14924							12177*	12177*	9.76
4.5 m			32815*	32815*	23861*	23861*	19339*	19339*	16657*	14276							12908*	11474	10.14
3.0 m			37900*	37900*	26957*	26041	21050*	18302	17572*	13585							14119*	10767	10.29
1.5 m			29256*	29256*	28981*	24424	22329*	17305	18262*	12981							15918*	10543	10.22
0 m			33857*	33857*	29512*	23526	22825*	16643	18436*	12560							16349*	10810	9.91
-1.5 m	26302*	26302*	37697*	37697*	28538*	23207	22273*	16342	17737*	12390							16789*	11709	9.35
-3.0 m	37483*	37483*	33429*	33429*	25946*	23350	20297*	16415									17100*	13659	8.49
-3.0 m			26780*	26780*	21110*	21110*											16866*	16866*	7.21

* Hydraulic capacity 87%

STANDARD

ENGINE CONTROL

Isuzu Tier III Engine EU stage IIIA
Hydraulically driven & reversible cooling fan
Electronic control of the injection system
Automatic engine pre-heating
Automatic/manual engine return to idle
Exhaust Gas Recirculator
Emergency stop
Electrical refuel pump with automatic stop
Fuel filter with water separator

HYDRAULIC CONTROL

Auto/Heavy/Super Power working modes
Pump torque variable control
Automatic Power boost control
Boom priority
Swing brake control
High performance "Super Fine" synthetic fiber hydraulic filter (High contamination catch)
2 travel speeds with auto down shifting

OPERATOR ENVIRONMENT

High visibility cab with safety glass
Adjustable and retractable armrest console with position memory
Safety lever
Self adjusting air conditioning and heating system
Cup holder
High visibility side monitor display with automatic brightness

Messages (function, temperature, safety, ...) on the display
Integrated diagnostic system
Working modes (Auto/Heavy/Super Power) combined with engine throttle
Anti-theft device
Hourmeter
Selectable auxiliary hydraulic flow pre-settings
RH front console with clock and cell phone holder
High capacity shock absorbers on cab with 4 points fluid mountings
Rain deflector
Windscreen with lockable opening
Windscreen washer and wiper
Removable lower front windscreen with storage location in cab
Glass cab roof window and sliding sun shade
ISO control pattern low effort & short joysticks
Adjustable sun visor
Washable cab floor mat
Rear view mirror and safety mirrors
Storage compartments
Integrated cool box
12V and 24V DC accessory sockets
Hammer/Shear change selected from the cab
Fore & aft adjustment of the whole seat & console

OPERATOR SEAT

Fully adjustable low frequency mechanical suspension seat including double acting hydraulic damper

Weight adjustment
Height / fore & aft adjustment
Adjustable head rest
Adjustable seat back angle with fully flat seat reclining
Adjustable arm rest
Safety belt

ELECTRICAL SYSTEM

Water proof connectors
Double horn
2 working lights on the cab
1 working light on the uppercarriage
2 working lights on the boom

UNDERCARRIAGE

Retractable Chassis
Sealed and long life lubricated tracks
Track guides

EQUIPMENT

EMS (Extended Maintenance System) pins and bushings as Standard
1000 hours lubrication interval for all, except buckets pins at 250 hours)
Low friction resin side shims on boom and dipper
Large tool box
Pre-disposal for the optional cab protection
Catwalks

OPTIONS

8.40 m standard boom
7.25 m mass excavation boom
3.66 m or 4.44 m or 5.62 m dipperstick
2.98 m mass excavation dipper
Counterweight removal device
Hydraulic safety valves on boom and dipper

Bucket/clamshell hydraulic circuit
Hammer hydraulic circuit
Hammer/shear hydraulic circuit
Full length track guide
Track width 650 mm - 750 mm - 900 mm (depending on the version)

Cab protection FOPS level 2
Choice of windscreen protections
GPS (Global Positioning System) by satellite
Centralized greasing system automatically actuated by an electrical grease pump

Standard and optional equipment shown can vary by country. Pictures are not contractual.

NOTE: CASE provides specific outfits for various countries and many optional fittings (OPT). The illustrations on this or other leaflets may relate to standard or optional fittings. Please consult your CASE dealer for any information in this regard and any possible updating on components. CNH Industrial reserves the right to modify machine specifications without incurring any obligation relating to such changes.