

**C-SERIES HYDRAULIC EXCAVATORS  
CX300C**

**CASE**  
CONSTRUCTION



**QUALITY  
YOU CAN TRUST**

[www.casece.com](http://www.casece.com)  
**EXPERTS FOR THE REAL WORLD  
SINCE 1842**

# MAIN REASONS TO CHOOSE THE CX300C



## HIGH EFFICIENCY

Up to 8% more fuel efficiency.  
Constant consumption monitoring.  
With the 5 Energy Saving Controls, Isuzu Tier III engine and the new ECO gauge function.



## HIGH RELIABILITY

Robust design.  
Increased durability.  
Lower cost of ownership.  
With the CASE top manufacturing quality and heavy duty arm/boom.



## COMFORT AND SAFETY

Spacious and safe cab.  
Low noise and vibrations.  
Ergonomic workstation.  
Real time parameters monitoring.  
Fully adjustable seat/joysticks and brand new LED cluster.





## HIGH PRECISION AND CONTROLLABILITY

High performance.  
Smooth control.  
Fuel saving.  
With CASE Intelligent Hydraulic System.



## OUTSTANDING VISIBILITY

Safe and fast operations.  
More comfort.  
With wider glazed area and rear/side cameras.



## FAST CYCLES

Higher breakout force.  
Continuous operations.  
Up to 10% higher digging capability.  
With H/SP modes and  
Auto Power boost.



## HIGH VERSATILITY

The perfect machine for every application.  
With 3 available power modes and 10  
auxiliary hydraulic settings.



## LOW TOTAL COST OF OWNERSHIP

Longer service intervals.  
Reduced downtimes.  
Fast, easy and safe maintenance operations.  
With the EMS bushings, high quality components and service points  
accessible from the ground.



# C- SERIES

## HYDRAULIC EXCAVATORS



### SIMPLE AND ROBUST UNDERCARRIAGE

CASE advanced energy management consists of 5 Energy Saving Controls:

- **Torque Control:** electronic control of the hydraulic oil flow to prevent engine overloads.
- **Boom Economy Control (BEC):** increased fuel efficiency in boom lowering/swinging operations.
- **Swing Relief Control (SWC):** optimized hydraulic power distribution in slewing operations to deliver the most efficient flow and pressure.
- **Spool Stroke Control (SSC):** automatic pressure adjustment during digging and leveling operations
- Idle functions
- **Auto Idle:** lowers engine rpm after 5 seconds of lever inactivity;
- **Idle Shutdown:** shuts the engine down after a pre-set time.

The CX300C is powered by **Tier III Isuzu engines**, designed to boost machine performances and optimize fuel economy.

Fuel consumption can be constantly monitored by the operator throughout the **new ECO gauge function**, that displays in real time the energy saving level utilized.



### HIGH RELIABILITY

Improved design for durable performances

- Monoboom is Heavy Duty as standard **to ensure the best durability in every working conditions.**
- New high strength casting parts with joined hinge flanges **reduce stress on components.**
- The 'sloped' lower frame design reduces the time needed to clean the undercarriage.



**Accurate, simple and robust design for high durability**

- The CX300C delivers leading design solutions and manufacturing quality.
- Boom and arm feature forged brackets and **reduced tolerances for increased component life minimizing downtime.**
- The anti-friction resin shims in the boom foot and head reduce noise and free play, **increasing durability and reliability for the customer.**
- New synthetic hydraulic filter reduces system contamination, **cutting service costs and boosting machine longevity.**



## FAST CYCLE

- The advanced hydraulic system offers higher breakout forces, improved swing speeds and greater swing torque, resulting in faster cycle times and 5% increase in productivity.
- Power boost function is automatically engaged. The electronic management of speed and power lowers fuel consumption and offers considerable productivity benefits in terms of outputs.



## HIGH VERSATILITY

3 power modes to match any customer need:

- A** AUTO: for normal digging, grading, lifting and precision work.
- H** HEAVY: for heavy operations always granting the best balance between productivity and fuel economy.
- SP** SUPER POWER: extra speed and power for the most demanding jobs that require maximum productivity.



Operators can store up to **10 auxiliary hydraulic flow settings** (and pressures as optional) to easily switch among different attachments with no need of any mechanical adjustment.



## FAST CYCLE

- *The Extended Maintenance Bushings (EMS)* provide longer greasing intervals, **reducing daily and weekly maintenance for the operator.**
- All filters and regular check points are grouped and easily accessible from the ground.
- Radiator and cooler are mounted side by side for more efficient cooling and easy access for cleaning.
- Optional refueling pump with auto cut off reduces downtime for regular fills.



# C- SERIES

## HYDRAULIC EXCAVATORS



### COMFORT AND SAFETY

- Superior wide and roomy cab with ample legroom.
- New cushioning system to lower noise and vibration levels for the operator's ultimate comfort.
- Totally adjustable workstation with fully reclinable air –suspended seat.
- Air conditioning system with 25% more airflow and 6% better performances compared to B-Series.



### OUTSTANDING VISIBILITY

- Wider glazed surface with single piece side window.
- New 7" LED cluster for a more secure and safe working environment and to constant monitor the main machine parameters.



# COMFORT RULES FIRST CLASS CAB AND SEAT



# C- SERIES

## HYDRAULIC EXCAVATORS

### CX300C

#### ENGINE

Model \_\_\_\_\_ ISUZU GH-6HK1X  
Type Water-cooled, 4-cycle diesel, 6-cylinder in line, High pressure common rail system (electric control), Turbocharger with air cooled intercooler.  
Number of cylinders / Displacement \_\_\_\_\_ electronically controlled  
Number of cylinders \_\_\_\_\_ 6 / 7,79 l  
Emissions level \_\_\_\_\_ Tier 3 / Eu stage III A  
Bore/stroke \_\_\_\_\_ 115 mm x 125 mm  
Rated flywheel horse power \_\_\_\_\_  
SAE J 1349, ISO 9249 \_\_\_\_\_ 202 kW / 270 hp at 2000 min<sup>-1</sup>  
ISO 14396 \_\_\_\_\_ 212 kW / 284 hp at 2000 min<sup>-1</sup>  
Maximum torque \_\_\_\_\_  
SAE J 1349, ISO 9249 \_\_\_\_\_ 989 Nm at 1500 min<sup>-1</sup>  
ISO 14396 \_\_\_\_\_ 1020 Nm at 1500 min<sup>-1</sup>

#### HYDRAULIC SYSTEM

Main pump \_\_\_\_\_ 2 variable displacement axial piston pumps with regulating system  
Max. oil flow \_\_\_\_\_ 2 x 243 liter/min at 1800 min<sup>-1</sup>  
Working circuit pressure \_\_\_\_\_  
Boom/Arm/Bucket \_\_\_\_\_ 34.3 MPa - 37.3 MPa with auto power boost  
Swing circuit \_\_\_\_\_ 30.4 MPa  
Travel circuit \_\_\_\_\_ 34.3 MPa  
Pilot pump \_\_\_\_\_ 27 liter/min  
Working circuit pressure \_\_\_\_\_ 3.9 MPa  
Boom Cylinders \_\_\_\_\_  
Bore \_\_\_\_\_ 140 mm  
Stroke \_\_\_\_\_ 1369 mm  
Arm Cylinder \_\_\_\_\_  
Bore \_\_\_\_\_ 150 mm  
Stroke \_\_\_\_\_ 1569 mm  
Bucket Cylinder \_\_\_\_\_  
Bore \_\_\_\_\_ 135 mm  
Stroke \_\_\_\_\_ 1078 mm

#### SWING

Swing Motor \_\_\_\_\_ Fixed displacement axial piston motor  
Maximum swing speed \_\_\_\_\_ 11,0 min<sup>-1</sup>  
Swing torque \_\_\_\_\_ 92,100 Nm

#### FILTERS

Suction filter \_\_\_\_\_ 105 µm  
Return filter \_\_\_\_\_ 6 µm  
Pilot line filter \_\_\_\_\_ 8 µm

#### ELECTRICAL SYSTEM

Voltage \_\_\_\_\_ 24 V  
Alternator \_\_\_\_\_ 50 Amp  
Starter \_\_\_\_\_ 24 V 5.0 kW  
Battery \_\_\_\_\_ 2X12V 128 Ah/5 HR

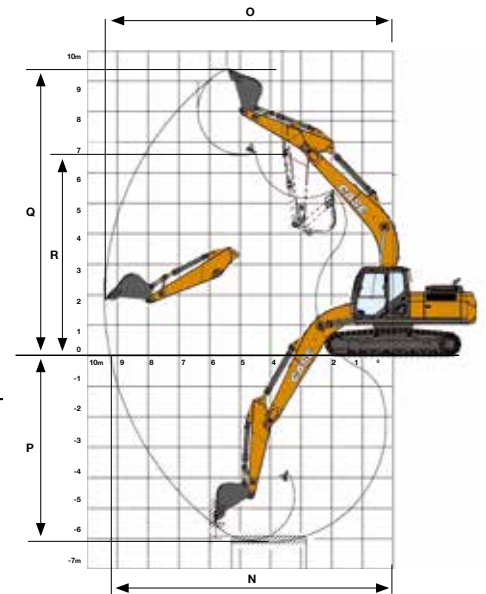
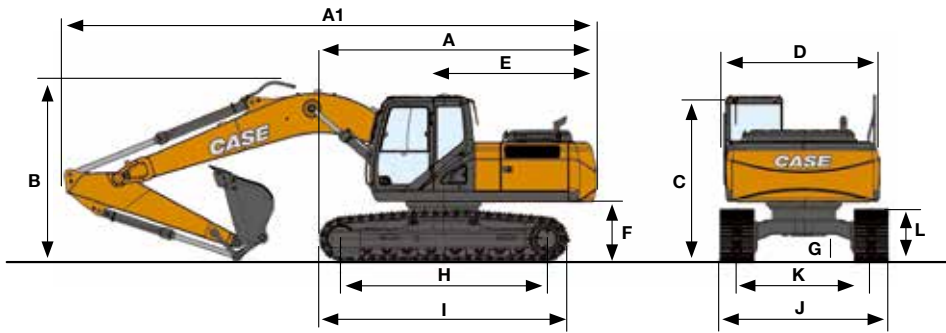
#### UNDERCARRIAGE

Travel motor \_\_\_\_\_ Variable displacement axial piston motor  
High travel speed (Automatic travel speed shifting) \_\_\_\_\_ 5.7 km/h  
Low travel speed \_\_\_\_\_ 3.3 km/h  
Drawbar pull \_\_\_\_\_ 233 kN  
Number of carrier rollers (each side) \_\_\_\_\_ 2  
Number of track rollers (each side) \_\_\_\_\_ 9  
Number of shoes (each side) \_\_\_\_\_ 50  
Type of shoes \_\_\_\_\_ Triple grouser shoes  
Gradeability \_\_\_\_\_ 70 % (35°)

#### CIRCUIT AND COMPONENT CAPACITIES

Fuel tank (l) \_\_\_\_\_ 450  
Hydraulic system (l) \_\_\_\_\_ 300  
Hydraulic tank (l) \_\_\_\_\_ 147





## DIMENSIONS

### GENERAL DIMENSIONS

			CX300C
A	Overall length (with attachment)	mm	10450
B	Overall height (to top of boom)	mm	3260
C	Cab height	mm	3090
D	Upper structure overall width	mm	2890
E	Clearance height under upper structure	mm	1180
F	Minimum ground clearance	mm	470
G	Wheel base (Center to center of wheels)	mm	3980
H	Crawler overall length	mm	4850
I	Track gauge	mm	2600
J	Undercarriage overall width (with 700mm shoes)	mm	3300
K	Crawler tracks height	mm	1040
L	Swing (rear end radius)	mm	3160
M	Overall length (without attachment)	mm	5580

### PERFORMANCE DATA

			HD Arm 3.18 m
	Boom length	mm	6150
	Bucket radius	mm	1570
	Bucket wrist action	°	176
N	Maximum reach at GRP	mm	10500
O	Maximum reach	mm	10670
P	Max. digging depth	mm	7100
Q	Max. digging height	mm	10060
R	Max. dumping height	mm	7090

### DIGGING FORCE (ISO 6015)

			HD Arm 3.18 m
With 1.3 m <sup>3</sup> Bucket, 700mm shoes			
	Arm digging force	kN	121.6
	with Auto power boost	kN	132.4
	Bucket digging force	kN	174.6
	with Auto power boost	kN	190.2

### WEIGHT AND GROUND PRESSURE

With 3.18 m arm, 1.3 m<sup>3</sup> bucket (1080 kg), 700 mm grouser shoes, operator, lubricant, coolant and full fuel tank.

	Weight	Ground pressure
CX300C LC	29900 kg	0.057 MPa

# LIFTING CAPACITY

Front 360°	REACH					
	0 m	2.0 m	4.0 m	6.0 m	8.0 m	At max reach

CX300C 3.18 HD arm, 700G shoes, max reach 9.10 m

8.0 m										5670*	5670*	6,73
6.0 m								5890*	5130	5290*	4990	8,12
4.0 m				13140*	13140*	9470*	7800	7510	4990	5330*	4210	8,86
2.0 m				14920*	12960	11190*	7220	7250	4760	5700*	3910	9,1
0 m				12840*	12270	10860	6810	7050	4570	6050	3940	8,89
-2.0 m		9220*	9220*	17870*	12230	10700	6670	7000	4520	6770	4390	8,19
-4.0 m		17510*	17510*	14640*	12520	10050*	6810			8240	5710	6,86



## STANDARD EQUIPMENT

### ENGINE

Isuzu 6-cylinder turbo-charged diesel  
Tier 3 /EU stage III A Certified  
Electronic fuel injection  
High pressure common rail system  
Neutral safety start  
Auto-engine warm up, emergency stop  
Glow-plug pre-heat  
EPF (Engine Protection Feature)  
Dual-stage fuel filtration  
Dual element air filter  
Remote oil filter  
Green plug oil drain  
500-hour engine oil change interval  
24-Volt system  
Battery disconnect switch  
High ambient temperature cooling package  
Fuel cooler  
Fuel filter restriction indicator  
Idle start  
Radiator, oil cooler, intercooler  
Refueling Pump

### FUEL ECONOMY SYSTEMS

Engine Idle/Fuel Economy System:  
Auto-idle  
One-touch idle  
Auto-idle shut-down  
Torque control  
Boom Economy Control (BEC)  
Swing Relief Control (SWC)  
Spool Stroke Control (SSC)

### HYDRAULICS

Auto power boost  
Auto travel speed change  
Selectable work modes  
Single acting pedal activated hammer circuit  
Pre-set auxiliary pump settings  
Switch controlled auxiliary selection  
Hydraulic filter restriction indicator  
Oil cooler  
5,000 hour hydraulic oil change interval  
2,000 hour hydraulic filter change interval

### UPPERSTRUCTURE

ISO mirrors  
Handrail – RH access  
ISO guard rails  
Isolation mounted cab (4 point fluid mounting)  
Lifting eyes for counterweight  
Lockable fuel cap, service doors and toolbox  
Rear and side view safety camera

### UNDERCARRIAGE

600 mm steel triple grouser shoes  
LC type (Long Carriage) undercarriage  
Full overlap turntable bearing tub  
Sealed link chain  
Double center track guards on CX350C  
Full Track Guards on CX370C

### ATTACHMENTS

HD Monoboom 6.45 m  
HD Arm 2.63 m

HD bucket linkage without hook  
Boom mounted work light  
Auxiliary pipe brackets  
Centralized lube bank  
Attachment cushion valve

### OPERATOR STATION

Pressurized cab  
Safety glasses for all windows  
Sun visor&rain deflector  
AC/heat/defrost w/auto climate control  
Hot&coolbox, cup holder & ashtray  
Cloth covered air-suspension seat fully adjustable and reclinable  
Adjustable armrests  
Tilting consoles - 4-position  
Low-effort joystick controls  
Sliding cockpit 180 mm  
Auxiliary select system  
Multifunction LED color monitor (180 mm)  
Anti-theft system (start code system)  
Rubber floor mat  
12 V electric socket /24 Vcigarette lighter  
One-piece right hand window  
Internal & external view mirrors  
Working lights (boom&upperstructure)  
Cab top working lights  
Windshield wiper / washer  
Storage compartments  
On-board diagnostic system

## OPTIONAL EQUIPMENT

### HYDRAULICS

Clamshell circuit/Low-flow circuit  
Single/Double acting multifunction auxiliary circuit - pedal activated (hammer/high flow)

### ATTACHMENTS

HD Arm 3.25 m  
Hydraulic quick coupler provision  
Safety valves and HD bucket linkage with hook

### UNDERCARRIAGE

700 / 800 mm steel shoes  
Full Track Guards on CX350C  
Double center track guards on CX370C

### OPERATOR STATION

ROPS level II  
Front cab guard - vertical bars (OPG level 2)  
Front cab guard - vertical bars (OPG level 1)  
Front mesh screen  
AM/FM CD/radio with antenna and 2-speakers

### OTHERS

Overload warning device  
Travel alarm



## PARTS AND SERVICE

Wide network of customer support across the world.

No matter where you work, we're here to support and protect your investment and exceed your expectations. You can count on Case and your Case dealer for full-service solutions-productive equipment, expert advice, flexible financing, genuine Case parts and fast service. We're here to provide you with the ultimate ownership experience. To locate a Case dealer or learn more about Case equipment or customer service, go to [www.casece.com](http://www.casece.com)

**NOTE:** CASE provides specific outfits for various countries and many optional fittings (OPT). The illustrations on this or other leaflets may relate to standard or optional fittings. Please consult your CASE dealer for any information in this regard and any possible updating on components. CNH Industrial reserves the right to modify machine specifications without incurring any obligation relating to such changes.

