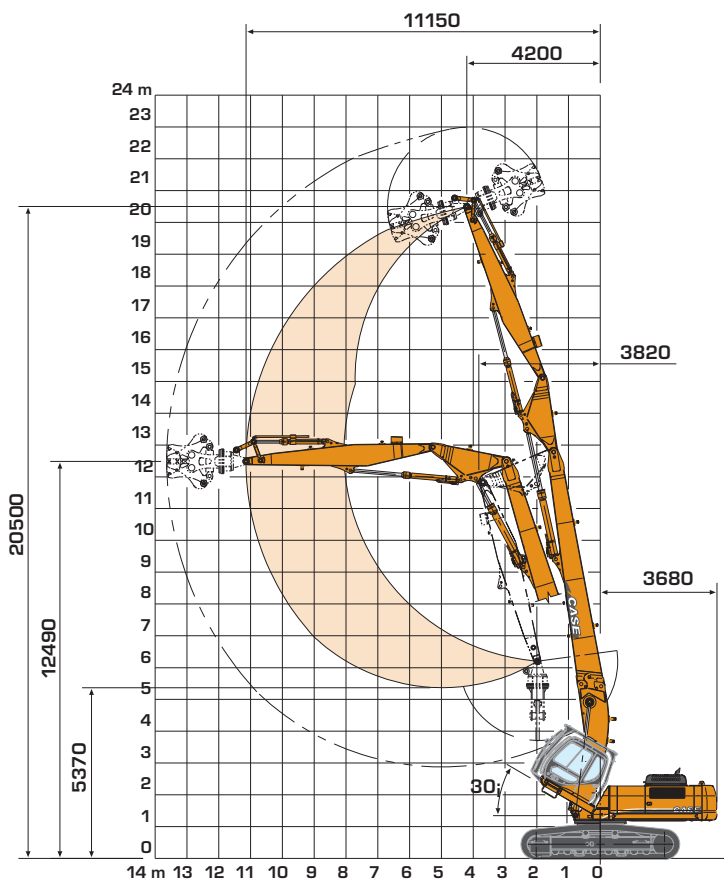


HYDRAULIC EXCAVATOR

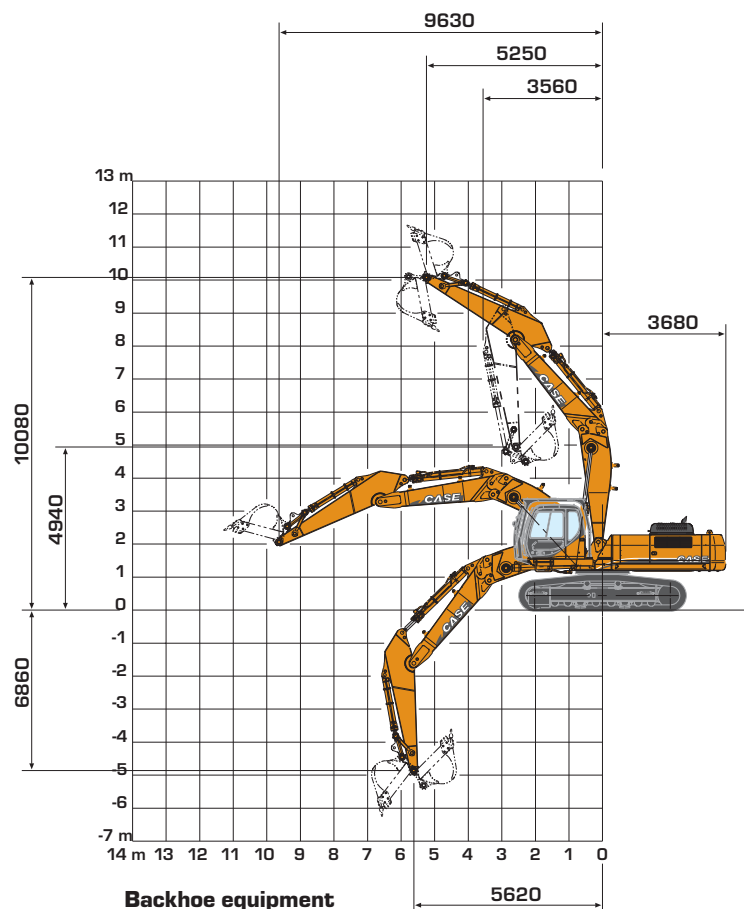
CX330HRD

(High Reach Demolition)

WORKING RANGE



Demolition equipment



Backhoe equipment

		With Demolition equipment	With 3.25 dipper
Maximum reach	m	20.50	10.08
Maximum forward reach	m	11.15	9.63
Maximum attachment weight	kg	2500	
Weight of the machine with demolition equipment (700mm tracks, full fuel tank, 2500kg crusher)	kg	43.400	
Weight of the machine with backhoe equipment (700mm tracks, 3.25m dipper, 1170kg - 1,4m ³ bucket)	kg		39.900
Swing radius (rear end)	m	3.68	3.68
Minimum swing radius (attachment)	m	3.82	3.56
Weight of the demolition equipment w/o crusher	kg	6.400	
Weight of the backhoe equipment w/o bucket	kg		4.300
Digging force w/o Power Boost	daN		16.390
w/ Power Boost	daN		17.800
Breakout force w/o Power Boost	daN		22.880
w/ Power Boost	daN		24.840

HIGHEST FLEXIBILITY

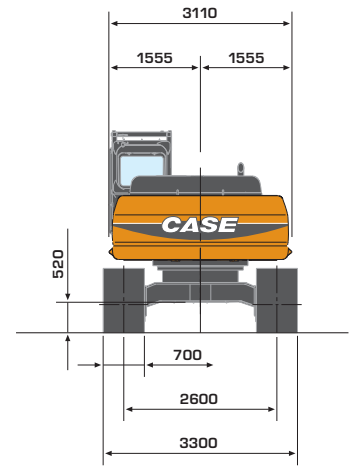
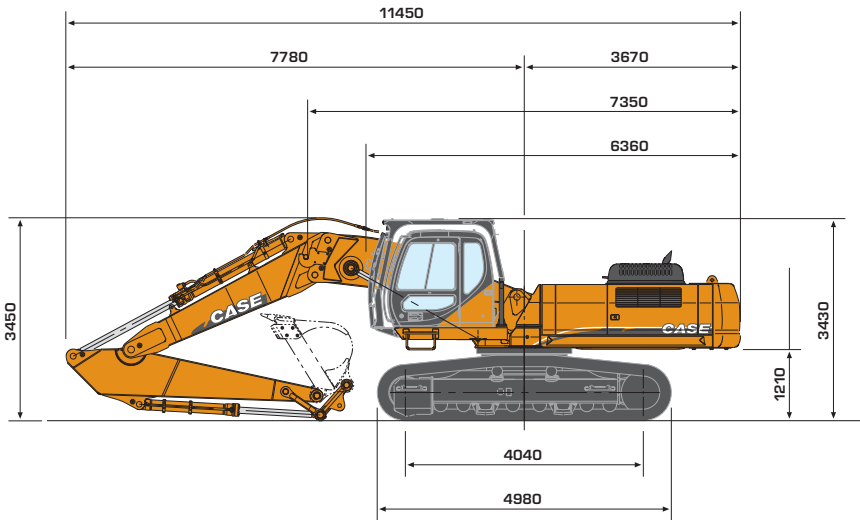
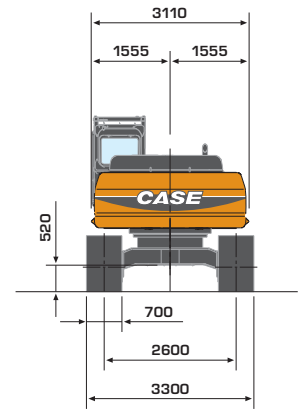
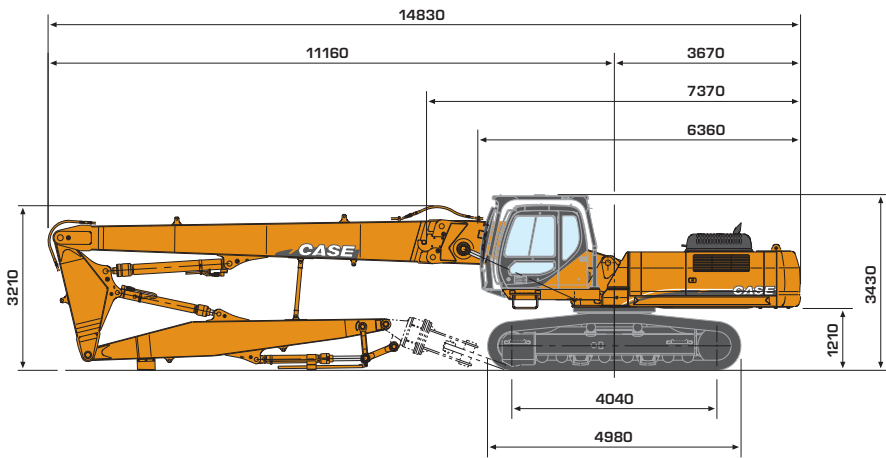
- 2 machines in 1
- Mechanical change with 2 pins
- Hydraulic quick couplers for all pipes and hoses
- Very fast change from demolition to backhoe

EASY TRANSPORTATION

- Folding demolition equipment
- No need to remove the demolition equipment

MAXIMUM SAFETY

- Tilttable cab for improved visibility and comfort
- Permanent control of working area
- High stability



STANDARD EQUIPMENT

- Hydraulic tilting cab
- FOPS guards (Top and front)
- Boom angle warning lamp and Auto stop
- Dipper angle alarm and Auto stop
- Slew angle limiter
- Large tool box on chassis
- 700mm track width
- Air Conditioning
- Air suspension seat

For Demolition Equipment

- Safety valves on boom, intermediate boom and dipper
- Low flow circuit
- Hammer / High flow circuit
- Bucket cylinder protection demolition attachment

For Backhoe Equipment

- Safety valves on boom and dipper
- Low flow circuit
- Hammer / High flow circuit
- 3.25 m dipper

OPTIONS

- Storage cradles
- Different track width (600 or 800mm instead of 700mm)
- Different dipper length for backhoe equipment (2.20m or 2.60m instead of 3.25m)

Standard and optional equipment shown can vary by country.

Worldwide Case Construction Equipment Contact Information

EUROPE:

via Plava, 80
10135 TORINO - ITALIA

AFRICA/MIDDLE EAST/CIS:

Riva Paradiso 14
6902 Paradiso - SWITZERLAND

NORTH AMERICA/MEXICO:

700 State Street
Racine, WI 53404 U.S.A.

LATIN AMERICA:

Av. General David Sarnoff 2237
32210 - 900 Contagem - MG
Belo Horizonte BRAZIL

ASIA PACIFIC:

Unit 1 - 1 Foundation Place - Prospect
New South Wales - 2148 AUSTRALIA

CHINA:

No. 29, Industrial Premises, No. 376,
De Bao Road, Waigaoqiao Ftz, Pudong,
SHANGHAI, 200131, P.R.C.

NOTE: Standard and optional fittings can vary according to the demands and specific regulations of each country. The illustrations may include optional rather than standard fittings - consult your Case dealer. Furthermore, CNH reserves the right to modify machine specifications without incurring any obligation relating to such changes.

CASE Construction Equipment

CNH UK Ltd
Unit 4,
Hayfield Lane Business Park,
Field Lane, Auckley,
Doncaster,
DN9 3FL
Tel. 00800-2273-7373
Fax +44 1302 802829

www.casece.com

CASE
CONSTRUCTION



Conforms to directive 98/37/CE