

Specifications

Engine

Make _____ ISUZU
 Type _____ AH-6UZ1XYSS
 Water-cooled, 4-cycle diesel, 6-cylinder in line, direct injection (electric control), Turbocharger with air cooled intercooler, without cooling fan
 Number of cylinders _____ 6
 Bore/Stroke _____ 120 x 145 mm
 Horsepower 80/1269/EEC _____ 362 hp (270 kW) @ 1950 rpm
 Maximum torque 80/1269/EEC _____ 1435 Nm @ 1500 rpm

Hydraulic system

Max output _____ 2 x 360 l/min @ 1980 rpm
 2 variable displacement axial piston pumps _____ Yes
 Attachment _____ 31.4 MPa
 Swing circuit _____ 29.4 MPa
 Travel _____ 34.3 Mpa

Swing

Maximum swing speed _____ 9.4 rpm

Travel

Travel motor _____ Variable displacement axial piston motor
 Travel speeds _____ 3.1 km/h
 Gradeability _____ 70% (35°)
 Drawbar pull _____ 341 kN

Electrical system

Circuit _____ 24 V
 Alternator _____ 50 Amp

Undercarriage

Number of carriers rollers _____ 3
 Number of track rollers (each side) _____ 9
 Number of shoes _____ 50
 Type of shoe _____ Triple grouser shoe

Circuit and component capacities

Fuel tank _____ 650 l
 Hydraulic system _____ 460 l
 Cooling system _____ 38 l

Weight

DEMOLITION SPECIFICATION.

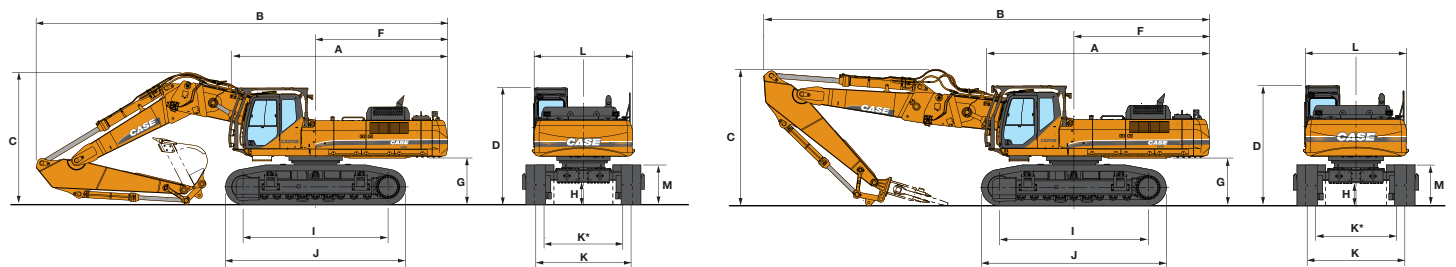
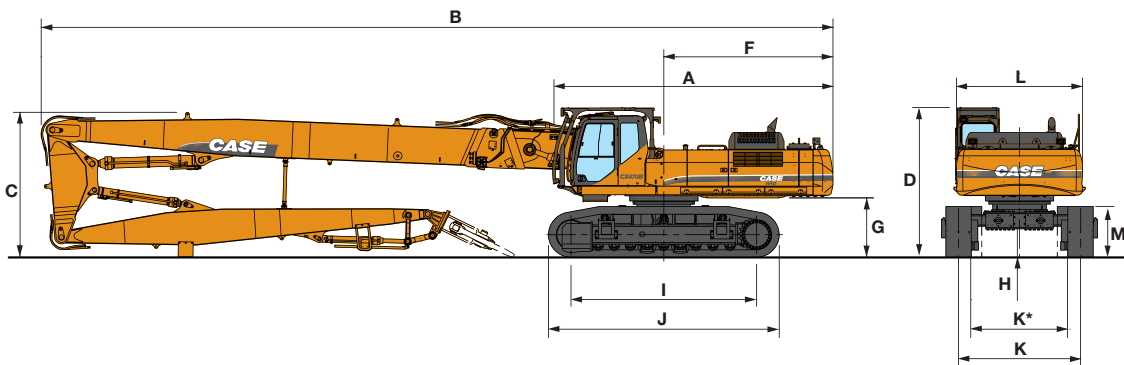
- 3-piece high reach demolition attachment, 600 mm tracks, operator, lubricant, coolant and full fuel tank.
- Monoboom, 600 mm tracks, with 3.38 arm, 1.8 m³ bucket, operator, lubricant, coolant and full fuel tank.

	Weight
Base machine only	47.190 kg
Additional counterweight, removable	3.920 kg
3-piece boom incl. cradle	9.930 kg
Monoboom incl. cradle	6.760 kg

CXB HYDRAULIC EXCAVATORS

CX470B HRD

General dimensions



HRD-BOOM

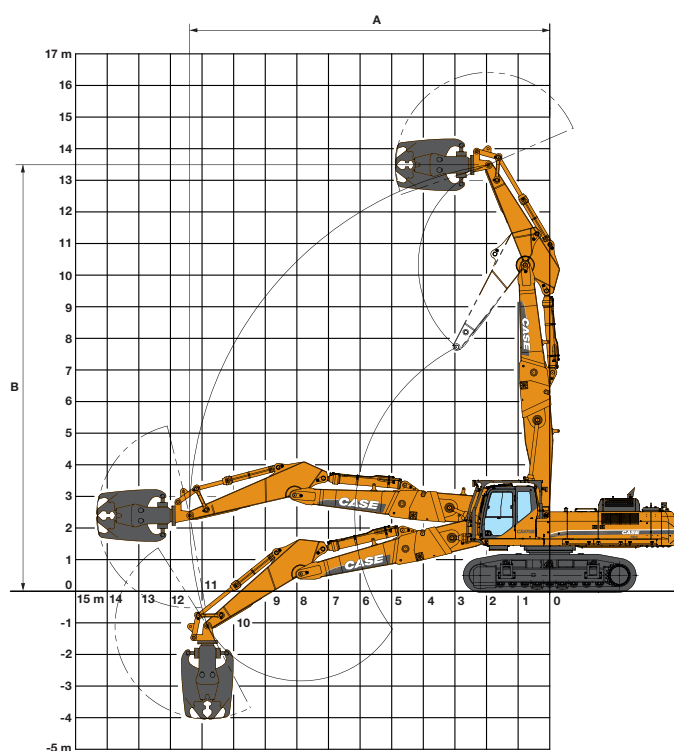
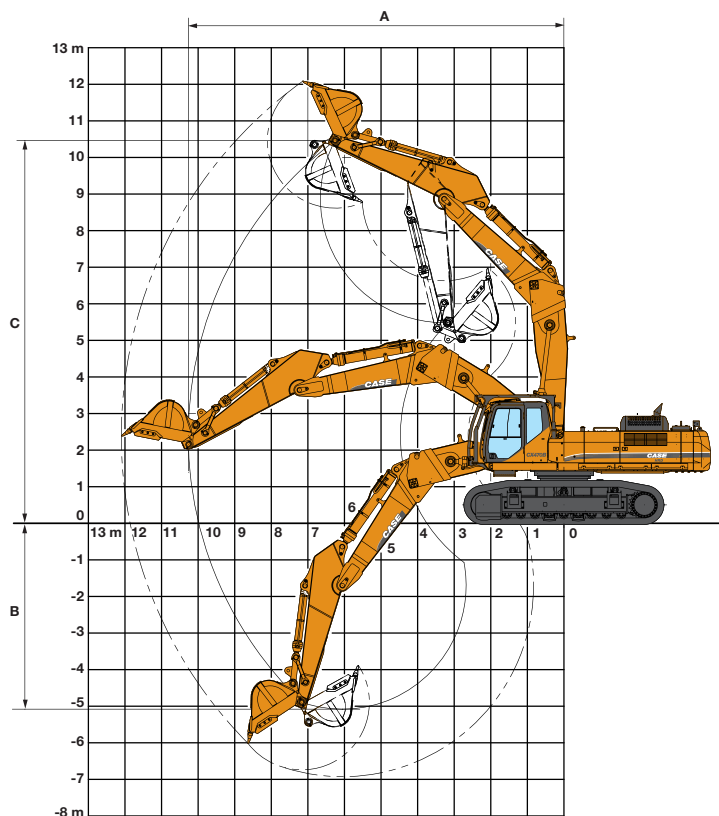
MONOBOOM

Bend boom

Straight boom

	HRD-BOOM	MONOBOOM	
A Overall length (without attachment)	6740 mm	6740 mm	6740 mm
B Overall length (with attachment)	18760 mm	12480 mm	13240 mm
C Overall height (with attachment)	3570 mm	3990 mm	3595 mm
D Cab height (with guard)	3570 mm	3570 mm	3570 mm
Transport length without boom	8450 mm	8450 mm	8450 mm
Transport length without counterweight	8450 mm	8450 mm	8450 mm
F Swing (rear end) radius	4010 mm	4010 mm	4010 mm
G Clearance height under upper structure	1375 mm	1375 mm	1375 mm
H Minimum ground clearance	668 mm	668 mm	668 mm
I Wheel base (Center to center of wheels)	4400 mm	4400 mm	4400 mm
J Crawler overall length	5450 mm	5450 mm	5450 mm
K Track gauge (Extended)	2890 mm	2890 mm	2890 mm
K* Track gauge (Retracted)	2390 mm	2390 mm	2390 mm
Undercarriage overall width (Extended)			
- with 600 mm shoes	3490 mm	3490 mm	3490 mm
L Undercarriage overall width (Retracted)			
- with 600 mm shoes	2990 mm	2990 mm	2990 mm
M Crawler tracks height	1206 mm	1206 mm	1206 mm

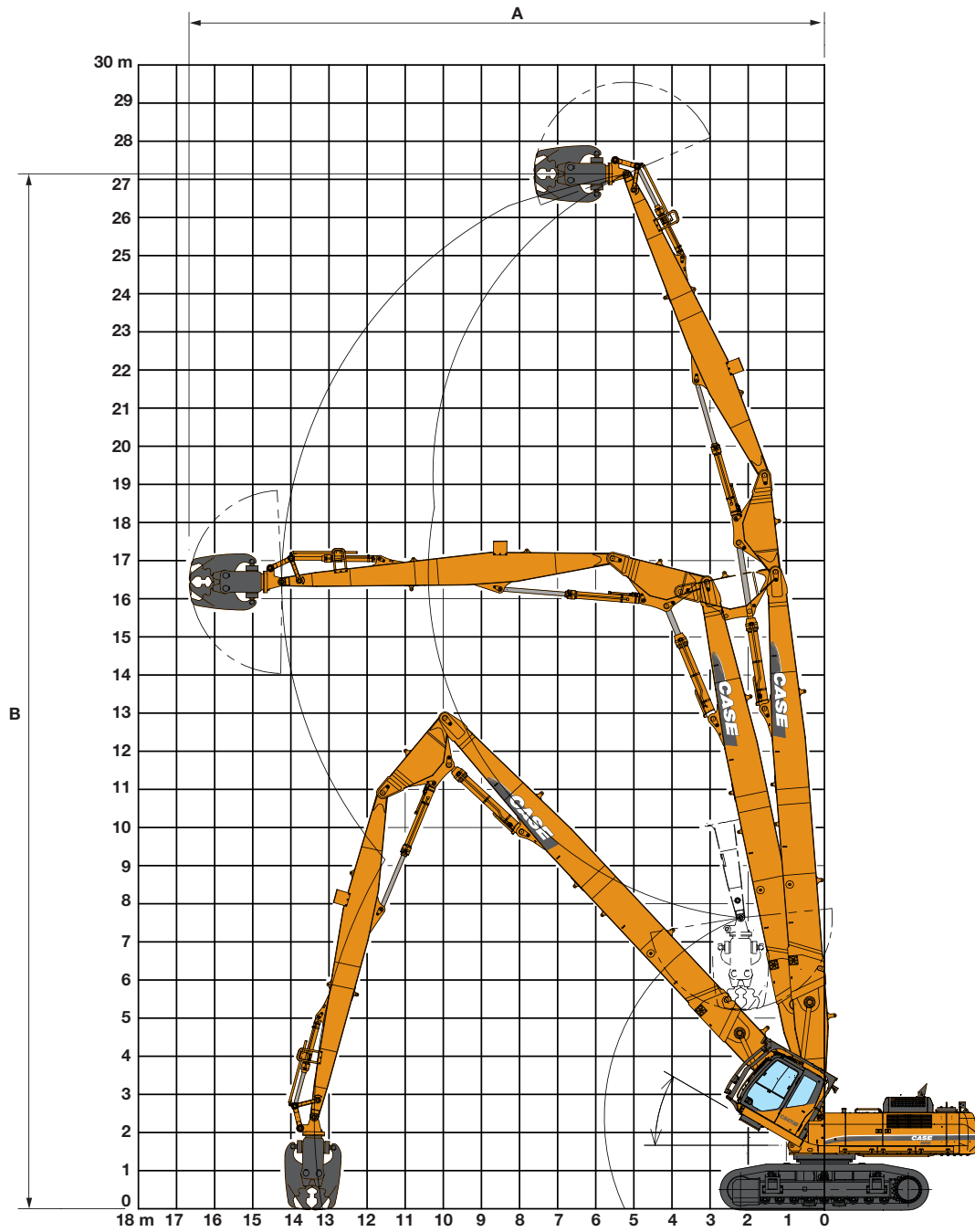
Performance data



MONOBOOM

	Bend boom	Straight boom
Arm top pin position		
A Maximum reach	10260 mm	11390 mm
B Maximum depth	5080 mm	-
C Maximum height	10460 mm	13490 mm

Performance data



HRD-BOOM

Arm top pin position	
A	Maximum reach 14240 mm
	Maximum attachment tool weight 3000 kg
B	Maximum height 27140 mm

Lifting capacity 2 piece attachment

Front 360°	REACH					
	4.5 m	6.0 m	7.5 m	9.0 m	10.5 m	At max reach m

BEND BOOM - 3.38 m length, 600G shoes, bucket of 1.8 m³ HD - 1810 kg.

Maximum reach 10.36 m

7.5 m						9887*	9887*			7551*	7551*	8.66	
6.0 m				12166*	12166*	10569*	10569*	9576*	8133	5731*	5731*	9.71	
4.5 m		18850*	18850*	14084*	14084*	11584*	10745	10079*	7740	6006*	6006*	10.14	
3.0 m		22910*	21777	16098*	14125	12688*	9936	10673*	7282	6498*	5594	10.34	
1.5 m		24585*	19734	17618*	12913	13608*	9215	11179*	6851	7276*	5374	10.31	
0 m		25228*	18917	18287*	12156	14108*	8690	11248	6520	8497*	5414	10.06	
-1.5 m	18122*	18122*	24181*	18723	18041*	11807	14014*	8400	11052	6341	10063	5766	9.57
-3.0 m	25026*	25026*	22008*	18895	16831*	11784	13121*	8354			10522*	6594	8.79
-4.5 m			18474*	18474*	14358*	12071	10900*	8606			10572*	8378	7.64

STRAIGHT BOOM - 3.38 m arm length, 600G shoes, bucket of 1.8 m³ - 1810 kg.

Maximum reach 11.66 m

9.0 m	10275*	10275*	11217*	11217*	11383*	11383*					11234*	10539	7.82
7.5 m	11104*	11104*	12218*	12218*	12479*	11057	11180*	7779			9916*	6555	9.76
6.0 m	22049*	22049*	16879*	15309	13566*	10414	11331*	7449	9214	5425	7749*	5011	10.87
4.5 m			17933*	13816	14034*	9633	11483*	7017	8990	5217	5684*	4297	11.48
3.0 m			18415*	12441	14243*	8874	11312	6579	8734	4981	5850*	4052	11.65
1.5 m			17805*	11545	13929*	8287	10915	6215	8517	4779	6169*	3985	11.63
0 m			16076*	11160	12923*	7943	10312*	5983	7995*	4662	6247*	4096	11.4
-1.5 m			13430*	11134	11137*	7840	8831*	5911	6344*	4677	5196*	4417	10.97

Standard equipment

ENGINE CONTROL

Isuzu Tier III Engine EU stage IIIA
Electronic control of the injection system
Automatic engine pre-heating
Automatic/manual engine return to idle
Exhaust Gas Recirculator
Emergency stop
Reversible hydraulic cooling fan
Electrical refuel pump with automatic stop
Fuel filter with water separator

HYDRAULIC CONTROL

Joysticks with proportional crusher control, undercarriage retraction control & boom coupler control
Auto / Heavy / Super Power working modes
Multifunction & safety controlpanel for backhoe and demolition working modes, swing and crusher limitation, chassis retraction and boom connection.

Pump torque variable control
Automatic Power boost control
High performance "Super Fine" synthetic fiber hydraulic filter (high contamination catch)

OPERATOR ENVIRONMENT

Hydraulic tilting cab with anti clattering system & ride on step
Heavy duty OPG level 2 FOPS topguard & frontguard
Additional, removable front meshguard
Reinforced glass roof window with wiper & resistance film
Polycarbonat window right hand side
Anti scatter film front windows

Adjustable and retractable armrest console with position memory
Safety lever
Self adjusting air conditioning and heating system
Cup holder
High visibility side monitor display with automatic brightness
Messages (function, temperature, safety, ...) on the display
Integrated diagnostic system combined with engine throttle
Anti-theft device
Hourmeter
Selectable auxiliary hydraulic flow pre-settings
RH front console with clock and cell phone holder
Washable cab floor mat
Rear view mirror and safety mirrors
Storage compartments
Integrated cool box
12 V and 24 V DC accessory sockets

OPERATOR SEAT

Fully adjustable low frequency mechanical suspension seat including double acting hydraulic damper
Weight adjustment
Height / fore & aft adjustment
Adjustable head rest
Adjustable seat back angle with fully flat seat reclining
Adjustable arm rest
Safety belt

ELECTRICAL SYSTEM

Water proof connectors

Double horn
4 boom working lights
3 working lights on the cab
1 working light on upperstructure
3 working lights on counterweight

UNDERCARRIAGE

Hydraulic retractable LC-undercarriage
Built in toolbox on undercarriage
600 mm track width (2,99 m retracted)
Sealed and long life lubricated tracks

EQUIPMENT

3-piece high-reach-demolition boom
Dust suppression water supply to dipperend
Monoboom with 2 working positions (straight and bend) incl.

Hydraulic boom coupler
Removable 3-piece heavy counterweight
Slew angle limiter
Boom angle warning and automatic stop
Arm moment alarm & automatic stop
Boom cylinder with HBCV safety valves
Piping and plug to boom connection point
High-flow and low flow hydraulics for HRD & 2-piece attachment
Multicoupler for rotation and pilot line
Transport rigs for HRD & 2-piece attachment, jack and counterweight
EMS (Extended Maintenance System) pins and bushings as Standard
1000 hours lubrication interval for all, except buckets pins at 250 hours)

Options

Short dipperstick for 2-piece boom
Safety camera

GPS (Global Positioning System) by satellite
Full lengths track guides

Water supply pipework for dust suppression

Standard and optional equipment shown can vary by country.

Worldwide Case Construction Equipment Contact Information

EUROPE:

via Plava, 80
10137 TORINO - ITALIA

AFRICA/MIDDLE EAST/CIS:

Riva Paradiso 14
6902 Paradiso - SWITZERLAND

NORTH AMERICA/MEXICO:

700 State Street
Racine, WI 53404 U.S.A.

LATIN AMERICA:

Av. General David Sarnoff 2237
32210 - 900 Contagem - MG
Belo Horizonte BRAZIL

ASIA PACIFIC:

Unit 1 - 1 Foundation Place - Prospect
New South Wales - 2148 AUSTRALIA

CHINA:

No. 29, Industrial Premises, No. 376.
De Bao Road, Waigaoqiao Ftz, Pudong,
SHANGHAI, 200131, P.R.C.

CASE Construction Equipment

CNH UK Ltd
Unit 4,
Hayfield Lane Business Park,
Field Lane, Auckley,
Doncaster,
DN9 3FL
Tel. 00800-2273-7373
Fax +44 1302 802829

CASE Customer Assistance
00800-2273-7373

The call is free from a land line. Check in advance with your Mobile Operator if you will be charged.



NOTE: Standard and optional fittings can vary according to the demands and specific regulations of each country. The illustrations may include optional rather than standard fittings - consult your Case dealer. Furthermore, CNH reserves the right to modify machine specifications without incurring any obligation relating to such changes.

Conforms to directive 98/37/CE



Test it at the CASE Customer Centre Paris!

www.casece.com

