

PRELIMINARY

CX75 LR specifications

Engine

Make _____ ISUZU
 Type _____ AU-4LE2X
 Water-cooled, 4-cycle diesel, 4-cylinder in line, direct injection,
 Turbocharger with air cooled intercooler
 Number of cylinders _____ 4
 Bore/Stroke _____ 85 x 96 mm
 Horsepower 80/1269/EEC _____ 53.6 hp (40 kW) @ 2000 rpm
 Maximum torque 80/1269/EEC _____ 210 Nm @ 1500 rpm

Hydraulic system

Max output _____ 2 x 68 l/min @ 2000 rpm
 2 variable displacement axial piston pumps _____ Yes
 Attachment _____ 29.4 MPa
 Swing circuit _____ 19.6 MPa
 Travel _____ 29.4 Mpa

Travel

Max travel speed _____ 5.1 km/h
 Low travel speed _____ 3.3 km/h
 Gradeability _____ 70% (35°)
 Drawbar pull _____ 59.5 kN

Electrical system

Circuit _____ 24V
 Alternator _____ 50 Amp

Undercarriage

Number of carriers rollers (each side) _____ 1
 Number of track rollers (each side) _____ 5
 Number of shoes each side _____ 39
 Type of shoe _____ Triple grouser shoe

Circuit and component capacities

Fuel tank _____ 100 l
 Hydraulic system _____ 97.3 l
 Cooling system _____ 10.2 l

Weight and ground pressure

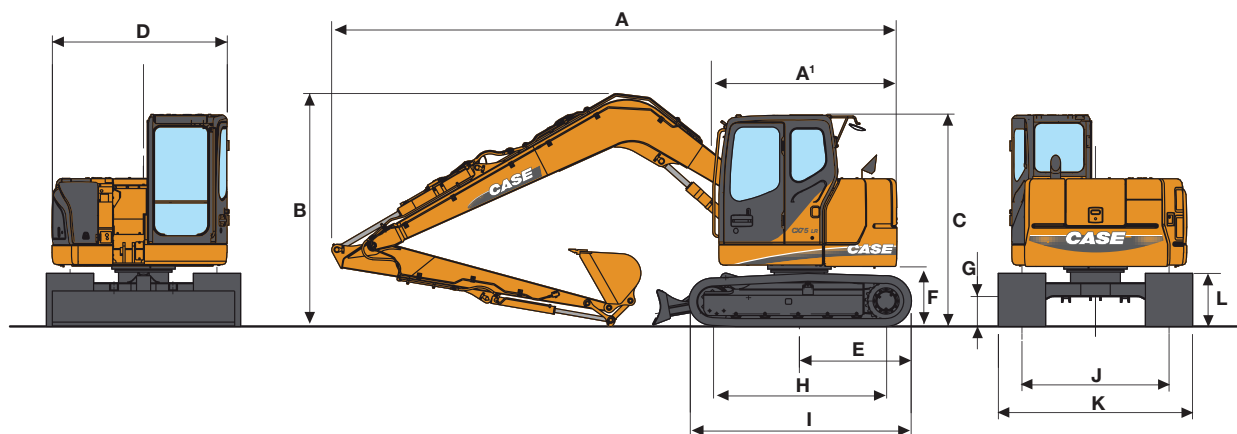
With 3.10 m Arm, 0.19 m³ bucket, operator, lubricant, coolant and full fuel tank

	Weight (kg)	Ground pressure (MPa)
650 mm grouser shoe	8440	0.028

CX HYDRAULIC EXCAVATORS

CX75 LR | CX130B LR

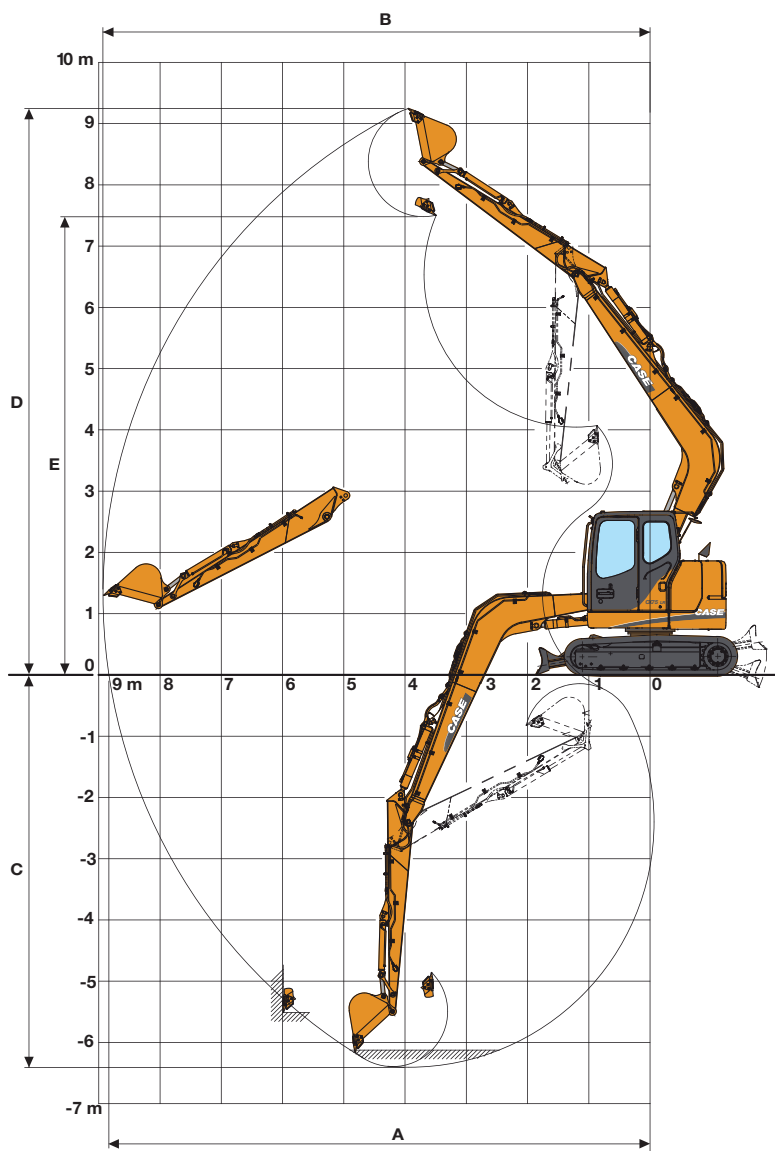
General dimensions



Arm 3.10 m

A ¹	Overall length (without attachment)	3280 mm
A	Overall length (with attachment)	7375 mm
B	Overall height (with attachment)	2960 mm
C	Cab height	2700 mm
D	Upper structure overall width	2225 mm
E	Swing (rear end) radius	1235 mm
F	Clearance height under upper structure	720 mm
G	Minimum ground clearance	360 mm
H	Wheel base (Center to center of wheels)	2210 mm
I	Crawler overall length	2845 mm
J	Track gauge	1870 mm
K	Undercarriage overall width (with 600 mm shoes)	2470 mm
L	Crawler tracks height	675 mm

Performance data



Arm 3.10 m

	Boom length	5350 mm
	Bucket radius	902 mm
	Bucket wrist action	177 °
A	Maximum reach at GRP	8835 mm
B	Maximum reach	8930 mm
C	Max. digging depth	6410 mm
D	Max. digging height	9250 mm
E	Max. dumping height	7480 mm
	Arm digging force	19.1 kN
	Bucket digging force	35.6 kN

CX HYDRAULIC EXCAVATORS

CX75 LR | CX130B LR

CX130B LR specifications

Engine

Make _____ ISUZU
Type _____ AJ-4JJ1X
Water-cooled, 4-cycle diesel, 4-cylinder in line, direct injection
(electric control), Turbocharger with air cooled intercooler
Number of cylinders _____ 4
Bore/Stroke _____ 95.4 x 104.9 mm
Horsepower SAE J1349 NET _____ 95 hp (70.9 kW) @ 2000 rpm
Maximum torque SAE J1349 NET _____ 359 Nm @ 1600 rpm

Hydraulic system

Max output _____ 2 x 129 l/min @ 2000 rpm
2 variable displacement axial piston pumps _____ Yes
Attachment _____ 34.3 MPa
Attachment (with auto power up) _____ 36.3 MPa
Swing circuit _____ 24.0 MPa
Travel _____ 34.3 Mpa

Travel

Max travel speed (Automatic travel speed shifting) _____ 5.6 km/h
Low travel speed _____ 3.4 km/h
Gradeability _____ 70% (35°)
Drawbar pull _____ 115 kN

Electrical system

Circuit _____ 24V
Alternator _____ 50 Amp

Undercarriage

Number of carriers rollers (each side) _____ 2
Number of track rollers (each side) _____ 7
Number of shoes each side _____ 46
Type of shoe _____ Triple grouser shoe

Circuit and component capacities

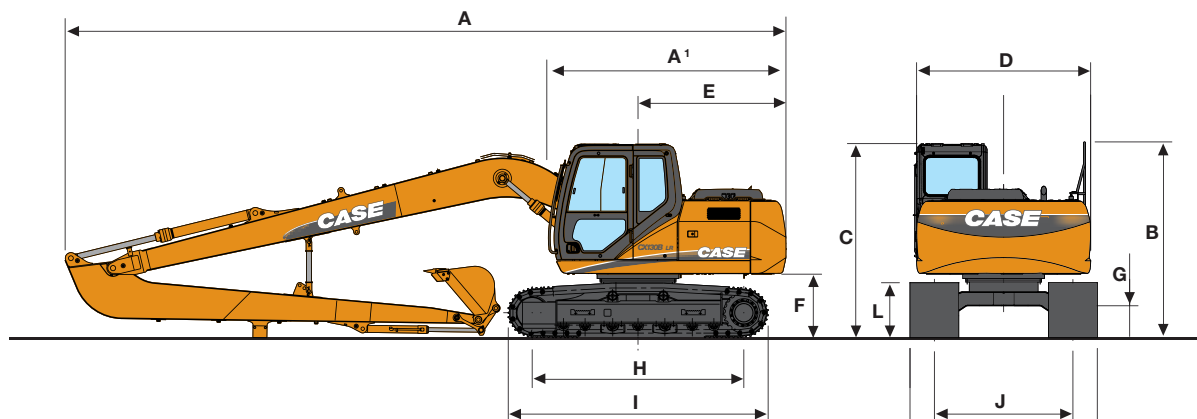
Fuel tank _____ 100 l
Hydraulic system _____ 97.3 l
Cooling system _____ 10.2 l

Weight and ground pressure

With 5.30 m Arm, 0.28 m³ bucket, operator, lubricant, coolant and full fuel tank

	Weight (kg)	Ground pressure (MPa)
700 mm grouser shoe	15.200	0.036

General dimensions



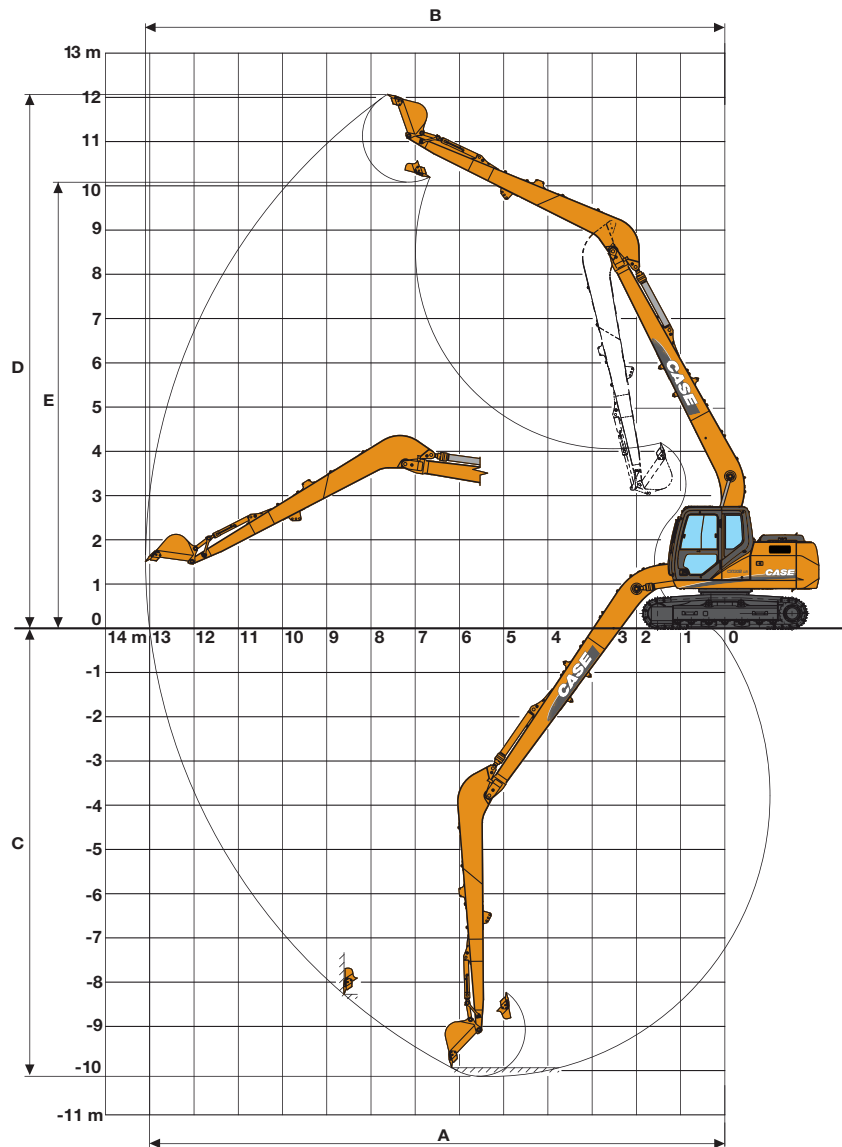
Arm 5.30 m

A ¹	Overall length (without attachment)	4010 mm
A	Overall length (with attachment)	10350 mm
B	Overall height (with attachment)	2820 mm
C	Cab height	2790 mm
D	Upper structure overall width	2500 mm
E	Swing (rear end) radius	2130 mm
F	Clearance height under upper structure	895 mm
G	Minimum ground clearance	440 mm
H	Wheel base (Center to center of wheels)	3040 mm
I	Crawler overall length	3760 mm
J	Track gauge	1990 mm
K	Undercarriage overall width (with 700 mm shoes)	2690 mm
L	Crawler tracks height	790 mm

CX HYDRAULIC EXCAVATORS

CX75 LR | CX130B LR

Performance data



Arm 5.30 m

	Boom length	7400 mm
	Bucket radius	1050 mm
	Bucket wrist action	180 °
A	Maximum reach at GRP	13010 mm
B	Maximum reach	13100 mm
C	Max. digging depth	10130 mm
D	Max. digging height	12070 mm
E	Max. dumping height	10090 mm
	Arm digging force	23.0 kN
	Bucket digging force	34.9 kN

CX75 LR lifting capacity

Front 360°	REACH							
	2.0 m	3.0 m	4.0 m	5.0 m	6.0 m	7.0 m	8.0 m	At max reach

Blade down, standard arm. 3.10 arm length, 0.186 m³ bucket, 600G shoes, max reach 8.11 m

7.0 m						898*	898*							765*	765*	5.74	
6.0 m						888*	888*	907*	907*					733*	733*	6.59	
5.0 m						947*	947*	932*	932*	867*	796			727*	727*	7.21	
4.0 m				1151*	1151*	1064*	1064*	1001*	1001*	957*	775			739*	642	7.64	
3.0 m	2588*	2588*	1792*	1792*	1432*	1432*	1228*	1228*	1099*	987	1014*	742		768*	572	7.93	
2.5 m	944*	944*	2429*	2429*	1755*	1755*	1415*	1244	1214*	923	1083*	701	900*	537	816*	526	8.08
1.0 m			2319*	2319*	2050*	1582	1594*	1141	1326*	858	1153*	660	1013*	512	887*	498	8.1
0 m	762*	762*	1818*	1818*	2255*	1451	1735*	1055	1420*	801	1211*	622	994*	489	990*	488	8.0
-1.0 m	1106*	1106*	1920*	1920*	2354*	1369	1820*	993	1479*	757	1245*	592			1104*	496	7.77
-2.0 m	1475*	1475*	2235*	2067	2356*	1327	1840*	956	1493*	729	1241*	574			1155*	525	7.4
-3.0 m	1884*	1884*	2697*	2074	2267*	1316	1787*	942	1447*	718					1212*	588	6.86
-4.0 m	2355*	2355*	2703*	2111	2078*	1332	1646*	950	1310*	728					1275*	709	6.11
-5.0 m	2922*	2922*	2255*	2183	1751*	1378	1361*	988							1341*	972	5.06

Blade up, standard arm. 3.10 arm length, 0.186 m³ bucket, 600G shoes, max reach 8.11 m

7.0 m						898*	898*							765*	765*	5.74	
6.0 m						888*	888*	907*	907*					733*	733*	6.59	
5.0 m						947*	947*	932*	932*	867*	796			727*	727*	7.21	
4.0 m				1151*	1151*	1064*	1064*	1001*	1001*	920	775			739*	642	7.64	
3.0 m	2588*	2588*	1792*	1792*	1432*	1432*	1228*	1228*	1099*	987	886	742		693	572	7.93	
2.5 m	944*	944*	2429*	2429*	1755*	1755*	1415*	1244	1101	923	845	701	657	537	644	526	8.08
1.0 m			2319*	2319*	1912	1582	1372	1141	1035	858	803	660	631	512	616	498	8.1
0 m	762*	762*	1818*	1818*	1774	1451	1283	1055	976	801	764	622	608	489	607	488	8.0
-1.0 m	1106*	1106*	1920*	1920*	1686	1369	1219	993	931	757	734	592			619	496	7.77
-2.0 m	1475*	1475*	2235*	2067	1645	1327	1181	956	902	729	715	574			657	525	7.4
-3.0 m	1884*	1884*	2608	2074	1634	1316	1167	942	891	718					733	588	6.86
-4.0 m	2355*	2355*	2648	2111	1651	1332	1176	950	901	728					879	709	6.11
-5.0 m	2922*	2922*	2255*	2183	1698	1378	1214	988							1195	972	5.06

CX130B LR lifting capacity

Front 360°	REACH							
	3.0 m	4.5 m	6.0 m	7.5 m	9.0 m	10.5 m	12.0 m	At max reach

5.30 arm length, 0.28 m³ bucket, 700G shoes, max reach 12.05 m

10.5 m														618*	618*	7.95	
9.0 m								817*	817*					556*	556*	9.4	
7.5 m								1301*	1301*					529*	529*	10.4	
6.0 m						1429*	1429*	1443*	1443*	1024*	1024*			524*	524*	11.2	
4.5 m						1670*	1670*	1589*	1448	1392*	1061			537*	537*	11.7	
3.0 m	4302*	4302*	2915*	2915*	2315*	2315*	1985*	1858	1782*	1352	1620	1003		566*	566*	12.0	
1.5 m	2304*	2304*	4025*	3562	2898*	2370	2329*	1690	1996*	1250	1554	940	673*	673*	615*	615*	12.1
0 m	1558*	1558*	4459*	3132	3404*	2124	2507	1540	1905	1155	1492	881		688*	683	12.0	
-1.5 m	1741*	1741*	3515*	2906	3291	1958	2386	1428	1825	1080	1443	834		797*	691	11.7	
-3.0 m	2115*	2115*	3568*	2820	3195	1871	2312	1359	1775	1033	1414	808		965*	731	11.2	
-4.5 m	2580*	2580*	3996*	2821	3169	1847	2286	1335	1759	1018				1243*	819	10.4	
-6.0 m	3124*	3124*	4706*	2887	3202	1877	2307	1354	1785	1042				1690	896	9.37	
-7.5 m	3749*	3749*	4317*	3017	3258*	1963	2385	1427						2218	1328	7.91	
-9.0 m			3190*	3190*										2496*	2293	5.7	

* Hydraulic capacity 87%

Standard equipment

ENGINE CONTROL (common)

Common rail engine Tier 4 stage A compliant
Automatic engine pre-heating
Selectable one touch engine return to idle
Exhaust Gas Recirculator
Emergency stop
Fuel filter with water separator

CX130B LR ONLY

Common rail engine Tier III European Standards
Electronic control of the injection system
Automatic/manual engine return to idle
Electrical refuel pump with automatic stop

HYDRAULIC CONTROL (common)

Swing brake
High performance "Super Fine" synthetic fiber hydraulic filter (high contamination catch)
Attachment cushion control
2 travel speeds

CX130B LR ONLY

Auto/Heavy/Super Power working modes
Pump torque variable control
Automatic Power boost control

OPERATOR ENVIRONMENT (common)

High visibility cab with safety glass
Adjustable and retractable armrest console with safety lever
High performance heating system
Cup holder & ashtray

High visibility side monitor display
Hour meter and fuel meter gauges
Anti-theft device
High capacity shock absorbers on cab with 4 points fluid mountings
Windscreen with lockable opening
Windscreen washer and wiper
Removable lower front windscreen with storage location in cab
High visibility glass cab roof window
ISO control pattern low effort & short joysticks
Washable cab floor mat
Safety mirrors
Literature compartement
12 V and 24 V DC accessory sockets

CX130B LR ONLY

Safety lever
Working modes (Auto/Heavy/Super Power) combined with engine throttle
Selectable auxiliary hydraulic flow pre-settings

ELECTRICAL SYSTEM (common)

24V system with 12V and 24V socket in the cab
Water proof connectors
Horn
Working light on the cab and boom

EQUIPMENT (common)

EMS (Extended Maintenance System) pins and bushings as Standard (1000 hours lubrication

interval for all, except buckets pins at 250 hours)
Sealed and lubricated tracks
Track guides (front)
Pre-disposal for the optional cab protection

OPERATOR SEAT (common)

Fully adjustable low frequency mechanical suspension seat including
Double acting hydraulic damper
Weight adjustment
Height/fore & aft adjustment
Adjustable head rest
Adjustable seat back angle
Adjustable arm rest
Safety belt

Options

(common)

Hydraulic safety valves on boom and dipper
Bucket/clamshell hydraulic circuit
Low flow circuit (also adjustable version)

Hammer hydraulic circuit
Windscreen protections (FOPS and stoneguard)
FOPS cab roof protection
Air conditioning system

GPS (Global Positioning System) by satellite
Centralized greasing system automatically actuated by an electrical grease pump
Electrical refuel pump

Standard and optional equipment shown can vary by country.

Worldwide Case Construction Equipment Contact Information

EUROPE/AFRICA/MIDDLE EAST:

Centre D'affaires EGB
5, Avenue Georges Bataille - BP 40401
60671 Le Plessis-Belleville - FRANCE

NORTH AMERICA/MEXICO:

700 State Street
Racine, WI 53404 U.S.A.

LATIN AMERICA:

Av. General David Sarnoff 2237
32210 - 900 Contagem - MG
Belo Horizonte BRAZIL

ASIA PACIFIC:

Unit 1 - 1 Foundation Place - Prospect
New South Wales - 2148 AUSTRALIA

CHINA:

No. 29, Industrial Premises, No. 376,
De Bao Road, Waigaoqiao Ftz, Pudong,
SHANGHAI, 200131, P.R.C.

CASE Construction Equipment

CNH UK Ltd
Unit 4,
Hayfield Lane Business Park,
Field Lane, Auckley,
Doncaster,
DN9 3FL
Tel. 00800-2273-7373
Fax +44 1302 802829

CASE Customer
Assistance
00800-2273-7373

The call is free from a land line. Check in advance with your Mobile Operator if you will be charged.



NOTE: Standard and optional fittings can vary according to the demands and specific regulations of each country. The illustrations may include optional rather than standard fittings - consult your Case dealer. Furthermore, CNH reserves the right to modify machine specifications without incurring any obligation relating to such changes.

Conforms to directive 98/37/CE

