

**CASE**  
CONSTRUCTION

## TELESCOPIC HANDLERS

TX 130-33 | TX 130-45 | TX 140-45 | TX 170-45



# TELESCOPIC HANDLERS

TX 130-33 | TX 130-45 | TX 140-45 | TX 170-45

## Secure base

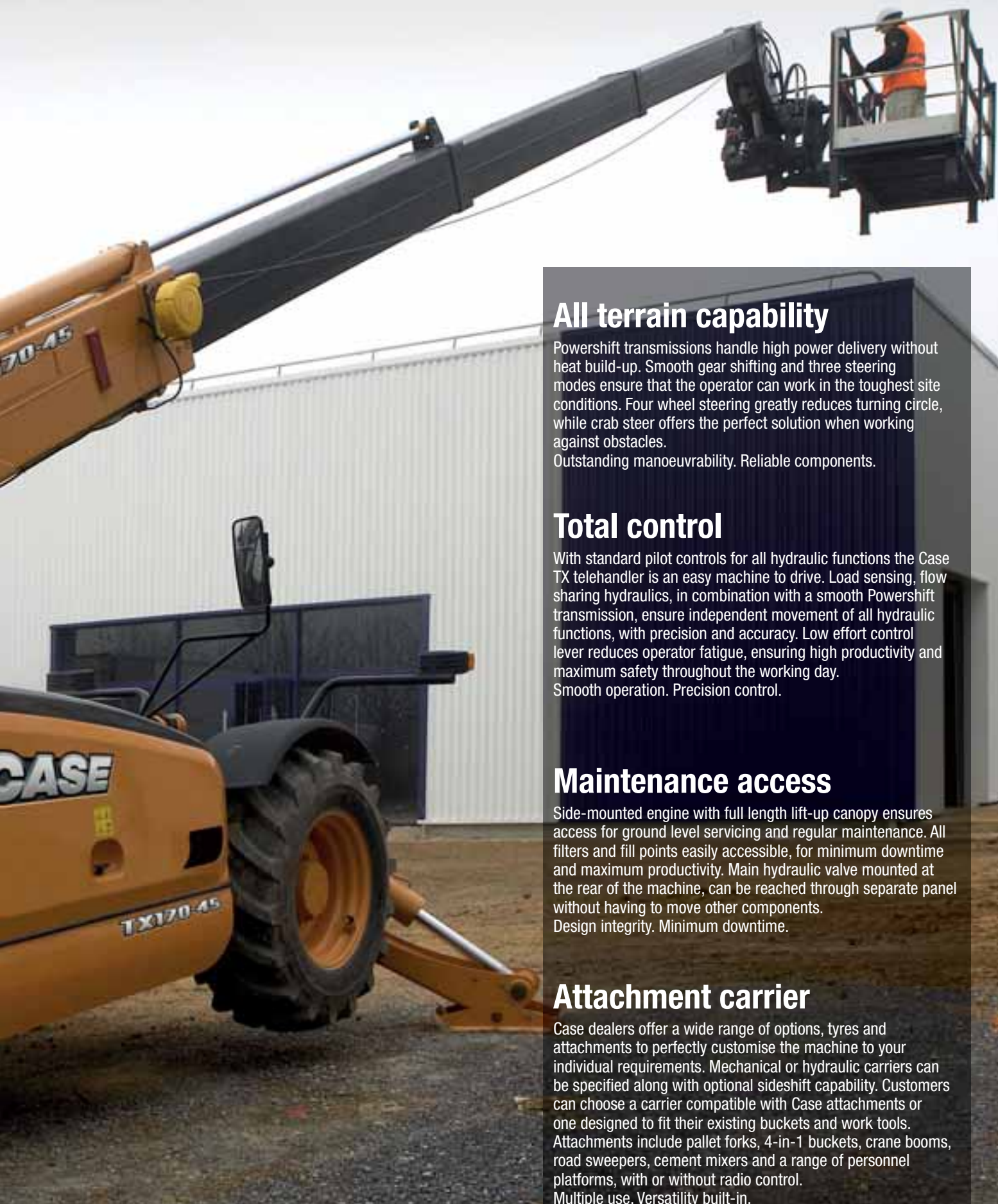
Case TX telescopic handlers offer impressive stability through a combination of a long wheelbase, low boom pivot point and optimised counterweight. Total stability. Maximum lift capacity.

## Reaching high

Robust boom construction with powerful hydraulic cylinders, or chain extension on one 13 m model, offers excellent range of working heights up to 17 m. Hydraulic frame levelling, along with audible and visual safe load indication ensures secure placing of loads at any height or reach. Design integrity. Maximum capacity.







## All terrain capability

Powershift transmissions handle high power delivery without heat build-up. Smooth gear shifting and three steering modes ensure that the operator can work in the toughest site conditions. Four wheel steering greatly reduces turning circle, while crab steer offers the perfect solution when working against obstacles.

Outstanding manoeuvrability. Reliable components.

## Total control

With standard pilot controls for all hydraulic functions the Case TX telehandler is an easy machine to drive. Load sensing, flow sharing hydraulics, in combination with a smooth Powershift transmission, ensure independent movement of all hydraulic functions, with precision and accuracy. Low effort control lever reduces operator fatigue, ensuring high productivity and maximum safety throughout the working day.

Smooth operation. Precision control.

## Maintenance access

Side-mounted engine with full length lift-up canopy ensures access for ground level servicing and regular maintenance. All filters and fill points easily accessible, for minimum downtime and maximum productivity. Main hydraulic valve mounted at the rear of the machine, can be reached through separate panel without having to move other components.

Design integrity. Minimum downtime.

## Attachment carrier

Case dealers offer a wide range of options, tyres and attachments to perfectly customise the machine to your individual requirements. Mechanical or hydraulic carriers can be specified along with optional sideshift capability. Customers can choose a carrier compatible with Case attachments or one designed to fit their existing buckets and work tools. Attachments include pallet forks, 4-in-1 buckets, crane booms, road sweepers, cement mixers and a range of personnel platforms, with or without radio control.

Multiple use. Versatility built-in.

# TELESCOPIC HANDLERS

TX 130-33 | TX 130-45 | TX 140-45 | TX 170-45

## Two telescopic designs

The TX range uses robust telescopic booms with inherent rigidity and strength to allow many hours of safe lifting. The TX130-33 has a chain driven extension for the second boom section, while all larger machines use an internally mounted hydraulic twin cylinder to extend the boom. All models are equipped with safety valves on the lift, tilt and stabiliser cylinders, to prevent the boom dropping in the case of hose failure. Visual and audible warning devices signaling overload are incorporated in the upper right corner of all cabs. On TX130-45 and above models, a strict safety device automatically prevents any hazardous extension of the mast. This feature makes the TX130-45 and above models suitable for the use of man platforms. Case provides a complete range of man baskets, fixed, orientable or even remotely radio controlled for tasks requiring to carry personnel.

## High load capacities

There is a Case TX telescopic handler for every task on the construction site. Customers can choose from 13 m, 14 m and 17 m working heights, with lifting capacities from 3.3 to 4.5 tons. There is one model with narrow stabilisers that open within the machine width. Wide stabiliser legs (standard on 17 meter model) are provided for maximum stability while lifting on the heavier models, giving Case some of the highest lifting capacities in the market.

## High manoeuvrability driveline

TX machines are incredibly agile, moving rapidly about the site thanks to a four-speed Powershift transmission and the easy to use three mode steering system. This combination of proven components ensures that there is no costly heat build-up in the transmission, even when travelling at high speeds on the road, where permitted.

The use of flow sharing hydraulics, along with the Powershift transmission, ensures precision work can be accomplished with ease. The single servo lever that controls all hydraulic functions also has a transmission cut-out button, giving the operator total control of the machine without having to move a hand away from the servo or the steering wheel. This ensures maximum safe use on site and reduced operator effort, cutting operator fatigue and boosting productivity.







## Operator's cab

From its initial conception the Case telehandler cab has led the field in terms of ergonomics, visibility and safety. Its curved top with wrap around glazing offers unparalleled visibility of the boom and the load. A glazed door, with opening window, provides easy access to the cab and the deep glass, low engine canopy and low boom pivot point ensure an excellent view all around the machine. This is a major contributing factor to increased site safety and prevents damage to the machine when manoeuvring in confined spaces. All instruments are placed in a low level console to further boost visibility to the front of the machine. Simple, single lever servo controls are easy to use and the operator has plenty of space in the ROPS/FOPS cab to remain comfortable throughout the day.



# TELESCOPIC HANDLERS

TX 130-33 | TX 130-45 | TX 140-45 | TX 170-45

## Engine

The TX telescopic handler range is powered by a 4.5 litre Case turbo engine. All machines are equipped with a low emission Tier III climate friendly engine, that with turbocharging and aftercooling offers from 99 hp to a healthy 118 hp and a powerful 516 Nm of torque.

Mounted on the side of the machine, the engine is easily accessible for all regular service and maintenance work, with filters and fill points all reached from ground level. Long service intervals and compatibility with the Case electronic service tool (EST) ensure minimum downtime, increasing profitability and keeping your machines at work.



## Flow sharing hydraulics

A fully load sensing hydraulic system, with flow sharing technology, allows independent use of all hydraulic functions. All major operations, such as lift and lower and forward reach, are controlled from a single servo lever, allowing the operator to keep one hand on the steering wheel when manoeuvring to a loading position. The flow sharing system ensures smooth lifting and reach and provides power when working with varied attachments.

The main hydraulic valve is mounted at the rear of the machine and is fully accessible through a separate cover, without having to remove additional components, cutting diagnostic and maintenance time and boosting profitability.



## Powershift 3 steering modes

A proven Powershift transmission delivers four forward and three reverse speeds, with no heat build up despite high manoeuvring speeds. Working in combination with the flow sharing hydraulic system, the Powershift transmission offers precise control with high tractability, ideal for use on hard standing or in tough construction project conditions.

Three mode steering, offering two wheel, four wheel and crab modes, ensures even the largest model in the range has compact and agile manoeuvring dimensions. Four wheel steering provides the smallest possible turning radius, while crab steer offers the perfect solution when working alongside structures or for backfilling when working with a bucket.









# TELESCOPIC HANDLERS

TX 130-33 | TX 130-45 | TX 140-45 | TX 170-45







# TELESCOPIC HANDLERS

**TX 130-33 WITH NARROW STABILIZERS**

## Specifications

### Engine

Make \_\_\_\_\_ CNH U.K. Limited (for Case)  
 EPA\*\* family \_\_\_\_\_ 8NHXL04.5DAB  
 Model \_\_\_\_\_ 445TA/MNK  
 Engine type \_\_\_\_\_ F4GE9484F\*J600  
 Net Power \_\_\_\_\_ 99 hp/74kW @2200 rpm  
 (According to 80/1269 CEE)  
 Max Torque \_\_\_\_\_ 430 Nm@1250 rpm  
 Turbo aftercooled, Tier 3, 4 cylinder, 2 valves per cylinder

### Transmission

Type \_\_\_\_\_ Powershift  
 Forward/Reverse speeds \_\_\_\_\_ 4/3  
 Maximum speed on road\*\*\* \_\_\_\_\_ 28 km/h

### Hydraulic system

Type \_\_\_\_\_ Load Sensing  
 Hydraulic controls \_\_\_\_\_ Servo  
 Simultaneous movement \_\_\_\_\_ yes  
 Hydraulic pump \_\_\_\_\_ gear

Hydraulic flow \_\_\_\_\_ 115 l/min  
 Hydraulic pressure \_\_\_\_\_ 240 bar  
 Mast extension \_\_\_\_\_ Chain

### Capacities

Fuel tank \_\_\_\_\_ 135 l  
 Hydraulic tank \_\_\_\_\_ 180 l

### Tyres

15.5 x 22.5 \_\_\_\_\_ MICHELIN  
 405/70 x 20 \_\_\_\_\_ SOLIDEAL  
 400/80 x 24 \_\_\_\_\_ DUNLOP  
 400/70 x 20 \_\_\_\_\_ MITAS

dvzsfv

\*\*EPA: Environmental Protection Agency

\*\*\* Max. speed limited according to the country's legislations

IMPORTANT NOTE: This model is not suitable for manplatform

## Performance

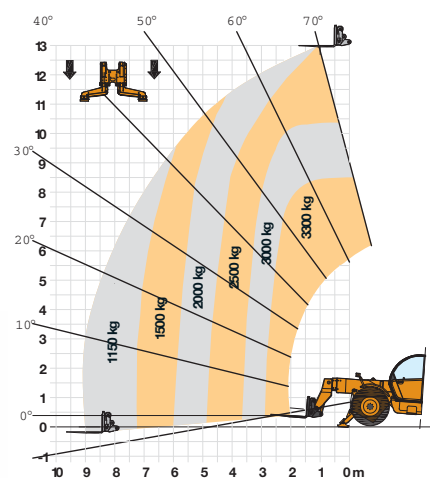
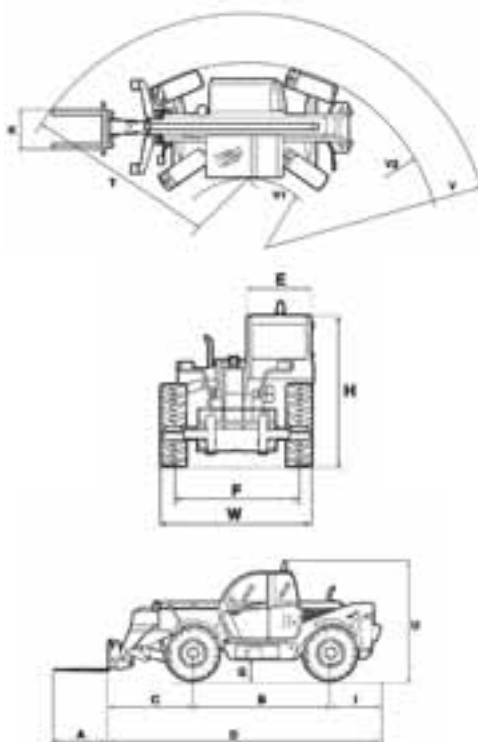
**TX 130-33**  
with narrow  
stabilisers down

**TX 130-33**  
with stabilisers up

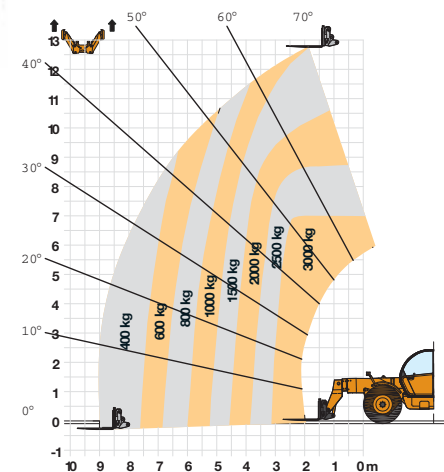
Maximum lift capacity (at 500 mm from fork heel)	kg	3300	3000
Maximum lift height	m	13.0	12.7
Lift capacity at maximum reach	kg	1150	400
Lift capacity at maximum lift height	kg	2500	1500
Reach fully raised	m	1.00	2.00
Maximum forward reach	m	8.75	8.75
Height with max load	m	8.40	6.80
Breakout force	daN	7750	7750
Operating weight	kg	9900	9900

## Dimensions

	With 24" rims	With 20" rims
<b>A</b>	1200 mm	1200 mm
<b>B</b>	3120 mm	3120 mm
<b>C</b>	1730 mm	1730 mm
<b>D</b>	5900 mm	5900 mm
<b>E</b>	1000 mm	1000 mm
<b>F</b>	2050 mm	2040 mm
<b>G</b>	402 mm	390 mm
<b>H</b>	2450 mm	2435 mm
<b>I</b>	1050 mm	1050 mm
<b>K</b>	1260 mm	1260 mm
<b>T</b>	4600 mm	4600 mm
<b>U</b>	2730 mm	2715 mm
<b>V</b>	5445 mm	5445 mm
<b>V<sub>1</sub></b>	980mm	980mm
<b>V<sub>2</sub></b>	3890mm	3890mm
<b>W</b>	2445mm	2445mm



EN 159/B





# TELESCOPIC HANDLERS

**TX 130-45** WITH WIDE STABILIZERS

## Specifications

### Engine

Make \_\_\_\_\_ CNH U.K. Limited (for Case)  
 EPA\*\* family \_\_\_\_\_ 8NHXL04.5DAA  
 Model \_\_\_\_\_ 445TA/MLE  
 Engine type \_\_\_\_\_ F4GE9484J\*J600  
 Net Power \_\_\_\_\_ 118 hp/88 kW @2200 rpm  
 (According to 80/1269 CEE)  
 Max Torque \_\_\_\_\_ 515 Nm@1250 rpm  
 Turbo aftercooled, Tier 3, 4 cylinder, 2 valves per cylinder

### Transmission

Type \_\_\_\_\_ Powershift  
 Forward/Reverse speeds \_\_\_\_\_ 4/3  
 Maximum speed on road\*\*\* \_\_\_\_\_ 35 km/h

### Hydraulic system

Type \_\_\_\_\_ Load Sensing  
 Hydraulic controls \_\_\_\_\_ Servo  
 Simultaneous movement \_\_\_\_\_ yes  
 Hydraulic pump \_\_\_\_\_ gear

Hydraulic flow \_\_\_\_\_ 115 l/min  
 Hydraulic pressure \_\_\_\_\_ 240 bar  
 Mast extension \_\_\_\_\_ Cylinders

### Capacities

Fuel tank \_\_\_\_\_ 135 l  
 Hydraulic tank \_\_\_\_\_ 180 l

### Tyres

13.0 x 24 \_\_\_\_\_ GOOD-YEAR  
 15.5 X 25 \_\_\_\_\_ MICHELIN  
 405/70 x 24 \_\_\_\_\_ MITAS  
 400/80 x 24 \_\_\_\_\_ DUNLOP

### Noise

Internal \_\_\_\_\_ 77 LpA  
 External \_\_\_\_\_ 103 LpA

\*\*EPA: Environmental Protection Agency

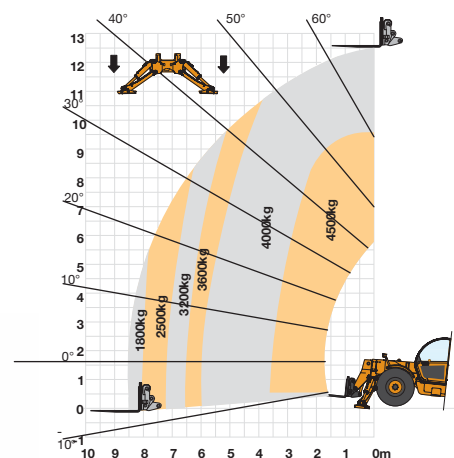
\*\*\* Max. speed limited according to the country's legislations

IMPORTANT NOTE: The TX130-45 model is suitable for the use of a manplatform (the TX130-40 is not)

## Performance

**TX 130-45**  
 with large stabilizers

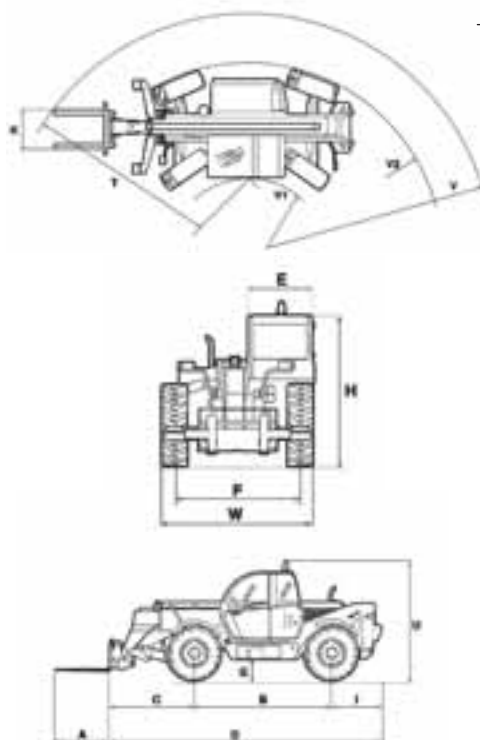
Maximum lift capacity (at 500 mm from fork heel)	kg	4500
Maximum lift height	m	12.45
Lift capacity at maximum reach	kg	1800
Lift capacity at maximum lift height	kg	4000
Reach fully raised	m	0.00
Maximum forward reach	m	8.65
Height with max load	m	8.20
Breakout force	daN	7750
Operating weight	kg	10630



## Dimensions

(with MITAS 405/70x24)

A	1200 mm
B	3120 mm
C	1617 mm
D	5850 mm
E	1000 mm
F	2050 mm
G	402 mm
H	2450 mm
I	1100 mm
K	1260 mm
T	4396 mm
U	2730 mm
V	5204 mm
V <sub>1</sub>	980mm
V <sub>2</sub>	3890mm
W	2445mm



# TELESCOPIC HANDLERS

**TX 140-45** WITH WIDE STABILIZERS

## Specifications

### Engine

Make \_\_\_\_\_ CNH U.K. Limited (for Case)  
 EPA\*\* family \_\_\_\_\_ 8NHXL04.5DAA  
 Model \_\_\_\_\_ 445TA/MLE  
 Engine type \_\_\_\_\_ F4GE9484J\*J600  
 Net Power \_\_\_\_\_ 118 hp/88 kW @2200 rpm  
 (According to 80/1269 CEE)  
 Max Torque \_\_\_\_\_ 515 Nm@1250 rpm  
 Turbo aftercooled, Tier 3, 4 cylinder, 2 valves per cylinder

### Transmission

Type \_\_\_\_\_ Powershift  
 Forward/Reverse speeds \_\_\_\_\_ 4/3  
 Maximum speed on road\*\*\* \_\_\_\_\_ 35 km/h

### Hydraulic system

Type \_\_\_\_\_ Load Sensing  
 Hydraulic controls \_\_\_\_\_ Servo  
 Simultaneous movement \_\_\_\_\_ yes  
 Hydraulic pump \_\_\_\_\_ gear

Hydraulic flow \_\_\_\_\_ 115 l/min  
 Hydraulic pressure \_\_\_\_\_ 240 bar  
 Mast extension \_\_\_\_\_ Cylinders

### Capacities

Fuel tank \_\_\_\_\_ 135 l  
 Hydraulic tank \_\_\_\_\_ 180 l

### Tyres

13.00 x 24 \_\_\_\_\_ GOOD-YEAR  
 15.5 x 25 \_\_\_\_\_ MICHELIN  
 405/70 x 24 \_\_\_\_\_ MITAS  
 400/80 x 24 \_\_\_\_\_ DUNLOP

### Noise

Internal \_\_\_\_\_ 77 LpA  
 External \_\_\_\_\_ 103 LpA

\*\*EPA: Environmental Protection Agency

\*\*\* Max. speed limited according to the country's legislations

IMPORTANT NOTE: This model is not suitable for manplatform

## Performance

**TX 140-45**  
 with wide stabilizers

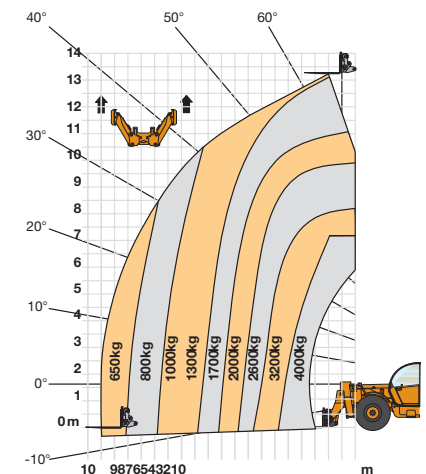
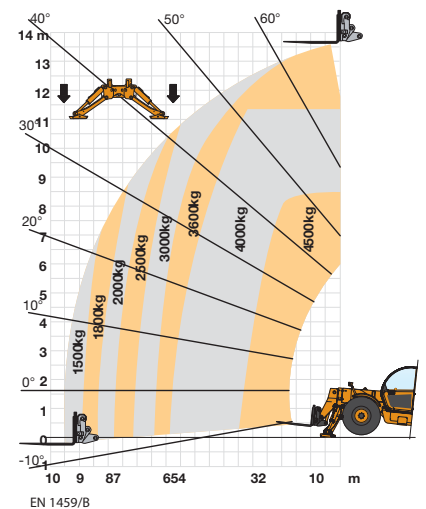
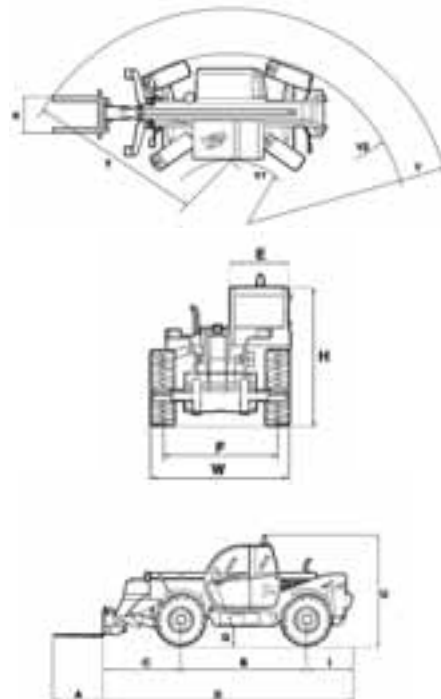
Maximum lift capacity (at 500 mm from fork heel)	kg	4500/4000*
Maximum lift height	m	13.55/13.30*
Lift capacity at maximum reach	kg	1500/650*
Lift capacity at maximum lift height	kg	3600/1700*
Reach fully raised	m	0.30/1.00*
Maximum forward reach	m	9.33/9.33*
Height with max load	m	11.40/7.30*
Breakout force	daN	7750/7750*
Operating weight	kg	11460

\* Machine with stabilizers up

## Dimensions

(with MITAS 405/70x24)

A	1200 mm
B	3120 mm
C	1902 mm
D	6135 mm
E	1000 mm
F	2050 mm
G	402 mm
H	2450 mm
I	1100 mm
K	1260 mm
T	4598 mm
U	2730 mm
V	5445 mm
V <sub>1</sub>	980mm
V <sub>2</sub>	3890mm
W	2445mm







# TELESCOPIC HANDLERS

TX 170-45

## Specifications

### Engine

Make \_\_\_\_\_ CNH U.K. Limited (for Case)  
 EPA\*\* family \_\_\_\_\_ 8NHXL04.5DAA  
 Model \_\_\_\_\_ 445TA/MLE  
 Engine type \_\_\_\_\_ F4GE9484J\*J600  
 Net Power \_\_\_\_\_ 118 hp/88 KW @2200 rpm  
 (According to 80/1269 CEE)  
 Max Torque \_\_\_\_\_ 515 Nm@1250 rpm  
 Turbo aftercooled, Tier 3, 4 cylinder, 2 valves per cylinder

### Transmission

Type \_\_\_\_\_ Powershift  
 Forward/Reverse speeds \_\_\_\_\_ 4/3  
 Maximum speed on road\*\*\* \_\_\_\_\_ 35 km/h

### Hydraulic system

Type \_\_\_\_\_ Load Sensing  
 Hydraulic controls \_\_\_\_\_ Servo  
 Simultaneous movement \_\_\_\_\_ yes  
 Hydraulic pump \_\_\_\_\_ gear

Hydraulic flow \_\_\_\_\_ 115 l/min  
 Hydraulic pressure \_\_\_\_\_ 240 bar  
 Mast extension \_\_\_\_\_ Cylinders

### Capacities

Fuel tank \_\_\_\_\_ 135 l  
 Hydraulic tank \_\_\_\_\_ 180 l

### Tyres

13.00 x 24 \_\_\_\_\_ GOOD-YEAR  
 15.5 X 25 \_\_\_\_\_ MICHELIN  
 405/70 x 24 \_\_\_\_\_ MITAS  
 400/80 x 24 \_\_\_\_\_ DUNLOP

### Noise

Internal \_\_\_\_\_ 77 LpA  
 External \_\_\_\_\_ 103 LpA

\*\*EPA: Environmental Protection Agency

\*\*\* Max. speed limited according to the country's legislations

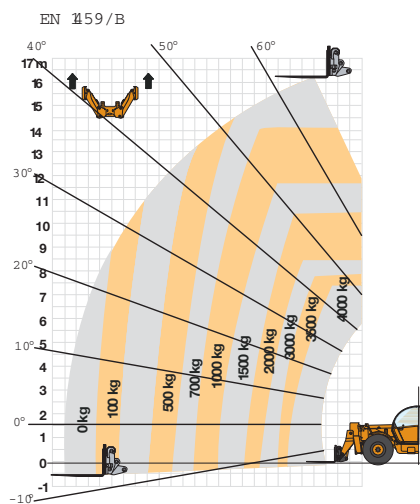
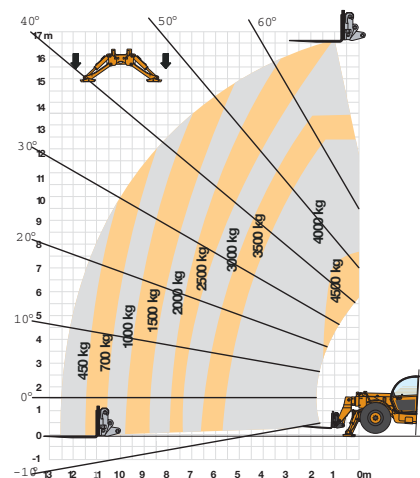
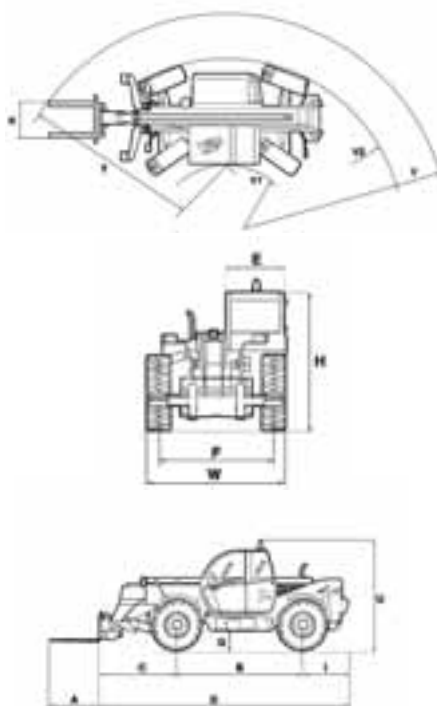
## Performance

		TX 170-45 with wide stabilisers up	TX 170-45 with wide stabilisers down
Maximum lift capacity (at 500 mm from fork heel)	kg	4000	4500
Maximum lift height	m	16.24	16.60
Lift capacity at maximum reach	kg	-	450
Lift capacity at maximum lift height	kg	700	3000
Reach fully raised	m	2.00	1.00
Maximum forward reach	m	12.54	12.54
Height with max load	m	7.40	7.95
Breakout force	daN	7750	7750
Operating weight	kg	12300	12300

## Dimensions

(with MITAS 405/70x24)

A	1200 mm
B	3120 mm
C	1730 mm
D	5900 mm
E	1000 mm
F	2050 mm
G	402 mm
H	2450 mm
I	1050 mm
K	1260 mm
T	4600 mm
U	2730 mm
V	5445 mm
V <sub>1</sub>	980mm
V <sub>2</sub>	3890mm
W	2445mm







# Standard Equipment

## DESIGN CONCEPT

99hp and 188hp (both turbo aftercooled 4,5 liter 4 cylinder Tier 3)  
4 Wheel Drive  
Powershift transmission  
3 steering modes ( 2WD 4WD Crab)  
Flow sharing / Load sensing hydraulics  
Narrow wide or no stabilisers  
Front axle balance control  
Independent stabilisers controls  
2 rear lateral counterweights  
Load movement indicator and safety device

Single battery  
Front and rear fenders  
Raincup for engine filter  
Road light support  
Road lights  
Left and right mirrors  
Mechanical parking brake  
Plate holder

## BOOM

Chain (TX130 - 33) or Cylinder (others) boom extension  
3 piece (TX130 / 140) or 4 piece (TX170) boom  
Self levelling  
Single lever hydraulic pilot control

## CAB COMFORT

Cloth seat with seat belt  
Rounded windshield with wiper  
Split door opening at 180°  
Sun visor  
Heating and efficient defrosting  
Single lever joystick (extension, boom, bucket, transmission cutout, hydraulic circuit)

## SAFETY

ROPS/FOPS cab  
Load movement indicator  
Hazardous boom extension warning (TX130-33) or stopping (other TX's) device  
Sun roof protection grill

Seat belt  
Safety decals  
Noise insulation meeting european standards  
Safety valves on lift - tilting - boom - stabilizers  
Backup alarm

# Options

Choice of tyres (construction or agricultural pattern)  
Choice of tyre sizes

## BOOM

Hydraulic connection for attachment  
Boom working lights  
Electric circuit side boom

## TOOLS

Choice of Case/CNH or competition carriers (mechanical or Hydraulic)  
Choice of fixed or sideshift

carriage  
Choice of buckets (Std, 4x1) with blade or teeth  
Choice of forks (fixed or floating)  
Fork extension  
Hooks  
Truss boom  
Extendible crane jib  
Concrete mixer  
Basket material handling  
Other  
Manplatform with or without Remote control

## CAB

Air conditioning  
Cloth deluxe suspension seat with seat belt  
Rear wiper  
Roof wiper  
Steering wheel knob  
External screen gard  
2 front working lights  
1 rear working light  
Titable steering wheel

## OTHER

Twin batteries

Cold start engine  
Limited slip differential on front axle  
Rotating beacon  
Trailer hook

Standard and optional equipment shown can vary by country.

## Worldwide Case Construction Equipment Contact Information

### EUROPE:

via Plava, 80  
10135 TORINO - ITALIA

### AFRICA/MIDDLE EAST/CIS:

Riva Paradiso 14  
6902 Paradiso - SWITZERLAND

### NORTH AMERICA/MEXICO:

700 State Street  
Racine, WI 53404 U.S.A.

### LATIN AMERICA:

Av. General David Sarnoff 2237  
32210 - 900 Contagem - MG  
Belo Horizonte BRAZIL

### ASIA PACIFIC:

Unit 1 - 1 Foundation Place - Prospect  
New South Wales - 2148 AUSTRALIA

### CHINA:

No. 29, Industrial Premises, No. 376.  
De Bao Road, Waigaoqiao Ftz, Pudong,  
SHANGHAI, 200131, P.R.C.

## CASE Construction Equipment

CNH UK Ltd  
Unit 4,  
Hayfield Lane Business Park,  
Field Lane, Auckland,  
Doncaster,  
DN9 3FL  
Tel. 00800-2273-7373  
Fax +44 1302 802829

**CASE** Customer Assistance  
**00800-2273-7373**

The call is free from a land line. Check in advance with your Mobile Operator if you will be charged.



NOTE: Standard and optional fittings can vary according to the demands and specific regulations of each country. The illustrations may include optional rather than standard fittings - consult your Case dealer. Furthermore, CNH reserves the right to modify machine specifications without incurring any obligation relating to such changes.

Conforms to directive 98/37/CE



Test it at the CASE Customer Centre Paris!

[www.caseconstruction.com](http://www.caseconstruction.com)

