

**TELESCOPIC HANDLERS**  
**TX 140-45 | TX 170-45**

**CASE**  
CONSTRUCTION



**ROBUST  
CONTROL**

[www.casece.com](http://www.casece.com)

**EXPERTS FOR THE REAL WORLD**  
**SINCE 1842**

# TELESCOPIC HANDLERS

## Secure base

Case TX telescopic handlers offer impressive stability through the combination of a long wheelbase, low boom pivot point and optimised counterweight. Total stability. Maximum lift capacity.

## Robust design

Robust boom construction with powerful hydraulic cylinders offers excellent range of working heights up to 17 m. Hydraulic frame levelling, along with audible and visual safe load indication ensure secure placing of loads at any height or reach. Design integrity. Maximum capacity.



## ROBUST CONTROL



### All terrain driveability

Powershift transmission handles high power delivery without heat build-up. Smooth gear shifting and three steering modes allow the operator to work in the toughest site conditions. Four wheel steering greatly reduces turning circle while crab steer offers the perfect solution when working with obstacles. Outstanding manoeuvrability. Reliable components.

### Total control

With standard pilot controls for all hydraulic functions the Case TX telehandler is an easy machine to drive. Load sensing, flow sharing hydraulics, in combination with a smooth Powershift transmission, it ensures independent movement of all hydraulic functions, with precision and accuracy. Low effort control lever reduces operator's fatigue, ensuring high productivity and maximum safety throughout the working day. Smooth operation. Precision control.

### Easy Access For Maintenance

Side-mounted engine with full length lift-up hoods ensures easy access for ground level servicing and regular maintenance. All filters and fill points are easily accessible, for minimum downtime and maximum productivity. Main hydraulic valves are mounted the rear of the machine and can be reached through separate panel without need to move other components. Design integrity. Minimum downtime.

### Versatile Carrier

Case dealers offer a wide range of options, tyres and attachments to perfectly customise the machine to your individual requirements. Mechanical or hydraulic carriers can be enriched along with optional sideshift functionality. Customers can choose a carrier compatible with Case attachments or one designed to fit their existing buckets and work tools. Attachments include pallet forks, 4-in-1 buckets, crane booms, cement mixers and a range of man platforms. Multiple use. Versatility built-in.

# TELESCOPIC HANDLERS

## Two telescopic designs

The TX range uses robust telescopic booms with inherent rigidity and strength to allow many hours of safe lifting. All models are equipped with safety valves on the lift, tilt and stabiliser cylinders, to prevent the boom from dropping material in case of failure. Visual and audible overload warning devices are incorporated on the upper right corner of all cabs.



## High load capacities

There is a Case TX telescopic handler for every task. Customers can choose between 14 m and 17 m working heights, with lifting capacities of 4.5 tons. Wide stabilizers legs are provided for maximum stability while lifting on the heavier models, giving Case some of the highest lifting capacities in the market.



## High manoeuvrability driveline

TX machines are incredibly agile, moving rapidly around the site thanks to a our speed, torque converter power-shift transmission and the easy to use three mode steering system. This combination of proven components ensures that there is no costly heat build-up in the transmission, even when travelling at high speeds on the road, where permitted. The use of flow sharing hydraulics, along with the Powershift transmission, ensures precision work to be accomplished with ease. The single servo lever that controls all hydraulic functions also has a transmission cut-off button, giving the operator total control of the machine without having to move a hand away from the servo or the steering wheel. This ensures maximum safety on site and reduced operator effort, cutting operator fatigue and boosting productivity.





## Operator's cab

From its initial conception the Case telehandler cab has led the field in terms of ergonomics, visibility and safety. Its curved top with wrap around glazing offers unmatched visibility of the boom and the load. A glazed door, with opening window, provides easy access to the cab and the extended glass surface, low engine canopy and low boom pivot point ensure an excellent view all around the machine. This is a major contributing factor to increased site safety and prevents damage to the machine when manoeuvring in confined spaces. All instruments are grouped in a lowered console to further boost visibility to the front of the machine. Simple, single lever servo controls are easy to use and the operator has plenty of space in the ROPS/FOPS cab to remain comfortable throughout the day.



# TELESCOPIC HANDLERS

## Engine

The TX telescopic handler range is powered by a 4.5 litre FPT Turbo after-cooled engine. All machines respect TIER III emission levels.

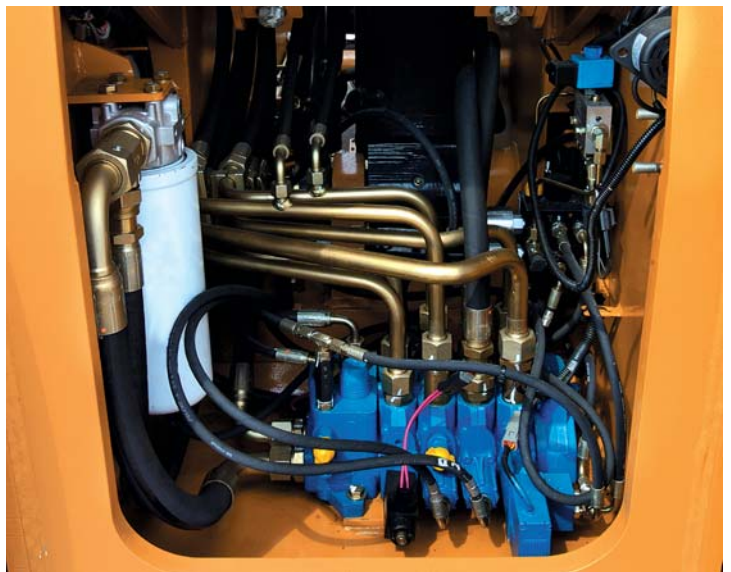
Mounted on the side of the machine, the engine is easily accessible for all regular service and maintenance work, with filters and fill points all checkable from ground level. Long service intervals and compatibility with the Case electronic service tool (EST) ensure minimum downtime, increasing profitability and keeping your machines at work.



## Flow sharing hydraulics

A fully load sensing hydraulic system, with flow sharing technology, allows independent use of all hydraulic functions. All major operations, such as lifting and lowering and forward reaching, are controlled from a single servo lever, allowing the operator to keep one hand on the steering wheel when manoeuvring and the other on the loading control. The flow sharing system ensures smooth lifting and reach and provides power when working with varied attachments.

The main hydraulic valve is mounted at the rear of the machine and is fully accessible through a separate cover, without having to remove additional components, cutting diagnostic and maintenance time for increased profitability.





# Specifications TX 140-45

## Engine

Model FPT 445TA/MLE  
 Engine type F4GE9484J\*J600  
 Net Power 118 hp/88 kW @2200 rpm  
 (According to 80/1269 CEE)  
 Max Torque 515 Nm@1250 rpm  
 Turbo aftercooled, Tier 3, 4 cylinder, 2 valves per cylinder

## Transmission

Type Powershift  
 Forward/Reverse speeds 4/3  
 Maximum speed on road\*\*\* 35 km/h

## Hydraulic system

Type Load Sensing  
 Hydraulic controls Servo  
 Simultaneous movement yes  
 Hydraulic pump gear  
 Hydraulic flow 115 l/min  
 Hydraulic pressure 240 bar  
 Mast extension Cylinders

## Capacities

Fuel tank 135 l  
 Hydraulic tank 180 l

## Tyres

13.00 x 24 GOOD-YEAR  
 15.5 x 25 MICHELIN  
 405/70 x 24 MITAS  
 400/80 x 24 DUNLOP

## Noise

Internal 77 LpA  
 External 103 LpA

\*\*EPA: Environmental Protection Agency

\*\*\* Max. speed limited according to the country's legislations

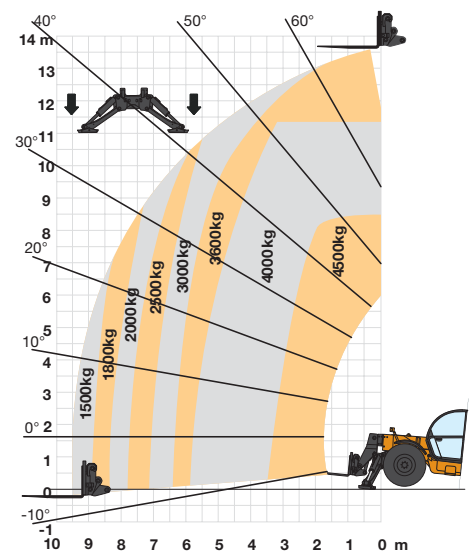
IMPORTANT NOTE: This model is not suitable for manplatform

## Performance

### TX 140-45

Maximum lift capacity (at 500 mm from fork heel)	kg	4500/4000*
Maximum lift height	m	13.55/13.30*
Lift capacity at maximum reach	kg	1500/650*
Lift capacity at maximum lift height	kg	3600/1700*
Reach fully raised	m	0.30/1.00*
Maximum forward reach	m	9.33/9.33*
Height with max load	m	11.40/7.30*
Breakout force	daN	7750/7750*
Operating weight	kg	11460

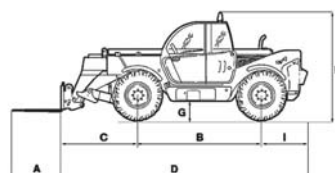
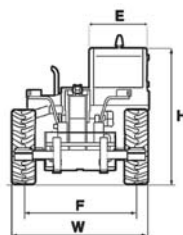
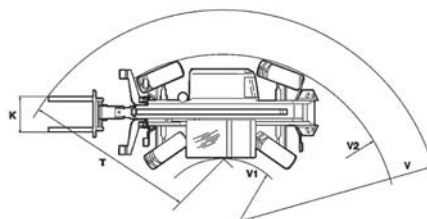
\* Machine with stabilizers up



## Dimensions

(with MITAS 405/70x24)

A	1200 mm
B	3120 mm
C	1902 mm
D	6135 mm
E	1000 mm
F	2050 mm
G	402 mm
H	2450 mm
I	1100 mm
K	1260 mm
T	4598 mm
U	2730 mm
V	5445 mm
V <sub>1</sub>	980mm
V <sub>2</sub>	3890mm
W	2445mm



# Specifications TX 170-45

## Engine

Model \_\_\_\_\_ FPT 445 TA /MLE  
 Engine type \_\_\_\_\_ F4GE9484J\*J600  
 Net Power \_\_\_\_\_ 118 hp/88 KW @2200 rpm  
 (According to 80/1269 CEE)  
 Max Torque \_\_\_\_\_ 515 Nm@1250 rpm  
 Turbo aftercooled, Tier 3, 4 cylinder, 2 valves per cylinder

## Transmission

Type \_\_\_\_\_ Powershift  
 Forward/Reverse speeds \_\_\_\_\_ 4/3  
 Maximum speed on road\*\*\* \_\_\_\_\_ 35 km/h

## Hydraulic system

Type \_\_\_\_\_ Load Sensing  
 Hydraulic controls \_\_\_\_\_ Servo  
 Simultaneous movement \_\_\_\_\_ yes  
 Hydraulic pump \_\_\_\_\_ gear  
 Hydraulic flow \_\_\_\_\_ 115 l/min  
 Hydraulic pressure \_\_\_\_\_ 240 bar  
 Mast extension \_\_\_\_\_ Cylinders

## Capacities

Fuel tank \_\_\_\_\_ 135 l  
 Hydraulic tank \_\_\_\_\_ 180 l

## Tyres

13.00 x 24 \_\_\_\_\_ GOOD-YEAR  
 15.5 X 25 \_\_\_\_\_ MICHELIN  
 405/70 x 24 \_\_\_\_\_ MITAS  
 400/80 x 24 \_\_\_\_\_ DUNLOP

## Noise

Internal \_\_\_\_\_ 77 LpA  
 External \_\_\_\_\_ 103 LpA

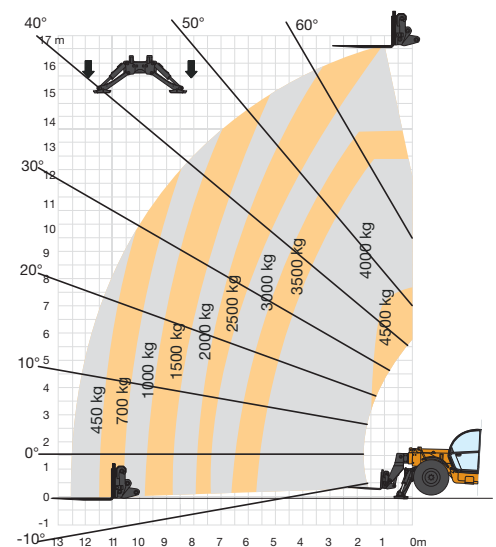
\*\*EPA: Environmental Protection Agency

\*\*\* Max. speed limited according to the country's legislations

## Performance

### TX 170-45

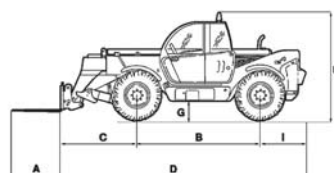
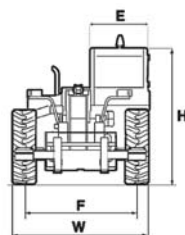
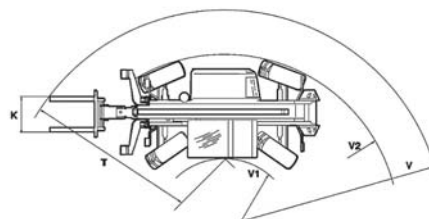
Maximum lift capacity (at 500 mm from fork heel)	kg	4500
Maximum lift height	m	16.60
Lift capacity at maximum reach	kg	450
Lift capacity at maximum lift height	kg	3000
Reach fully raised	m	1.00
Maximum forward reach	m	12.54
Height with max load	m	7.95
Breakout force	daN	7750
Operating weight	kg	12300



## Dimensions

(with MITAS 405/70x24)

A	1200 mm
B	3120 mm
C	1730 mm
D	5900 mm
E	1000 mm
F	2050 mm
G	402 mm
H	2450 mm
I	1050 mm
K	1260 mm
T	4600 mm
U	2730 mm
V	5445 mm
V <sub>1</sub>	980mm
V <sub>2</sub>	3890mm
W	2445mm





# Standard Equipment

## DESIGN CONCEPT

4,5 liter 4 cylinder Tier 3  
4 Wheel Drive  
Powershift transmission  
3 steering modes ( 2WD 4WD Crab)  
Flow sharing / Load sensing hydraulics  
Narrow wide or no stabilisers  
Front axle balance control  
Independent stabilisers controls  
2 rear lateral counterweights  
Load movement indicator and safety device  
Single battery  
Front and rear fenders  
Raincup for engine filter  
Road light support  
Road lights  
Left and right mirrors  
Mechanical parking brake  
Plate holder

## BOOM

3 piece (TX140) or 4 piece (TX170) boom  
Self levelling  
Single lever hydraulic pilot control

## CAB COMFORT

Cloth seat with seat belt  
Rounded windshield with wiper  
Split door opening at 180°  
Sun visor  
Heating and efficient defrosting  
Single lever joystick (extension, boom, bucket, transmission cutout, hydraulic circuit)

## SAFETY

ROPS/FOPS cab  
Load movement indicator  
Hazardous boom extension stopping device  
Sun roof protection grill  
Seat belt  
Safety decals  
Noise insulation meeting european standards  
Safety valves on lift - tilting - boom - stabilizers  
Backup alarm

# Options

Choice of tyres (construction or agricultural pattern)  
Choice of tyre sizes

## BOOM

Hydraulic connection for attachment  
Boom working lights  
Electric circuit side boom

## TOOLS

Choice of Case/CNH or competition carriers (mechanical or Hydraulic)  
Choice of fixed or sideshift carriage  
Choice of buckets (Std, 4x1)

with blade or teeth  
Choice of forks (fixed or floating)  
Fork extension  
Hooks  
Truss boom  
Extendible crane jib  
Concrete mixer  
Basket material handling  
Other

## CAB

Air conditioning  
Cloth deluxe suspension seat with seat belt  
Rear wiper

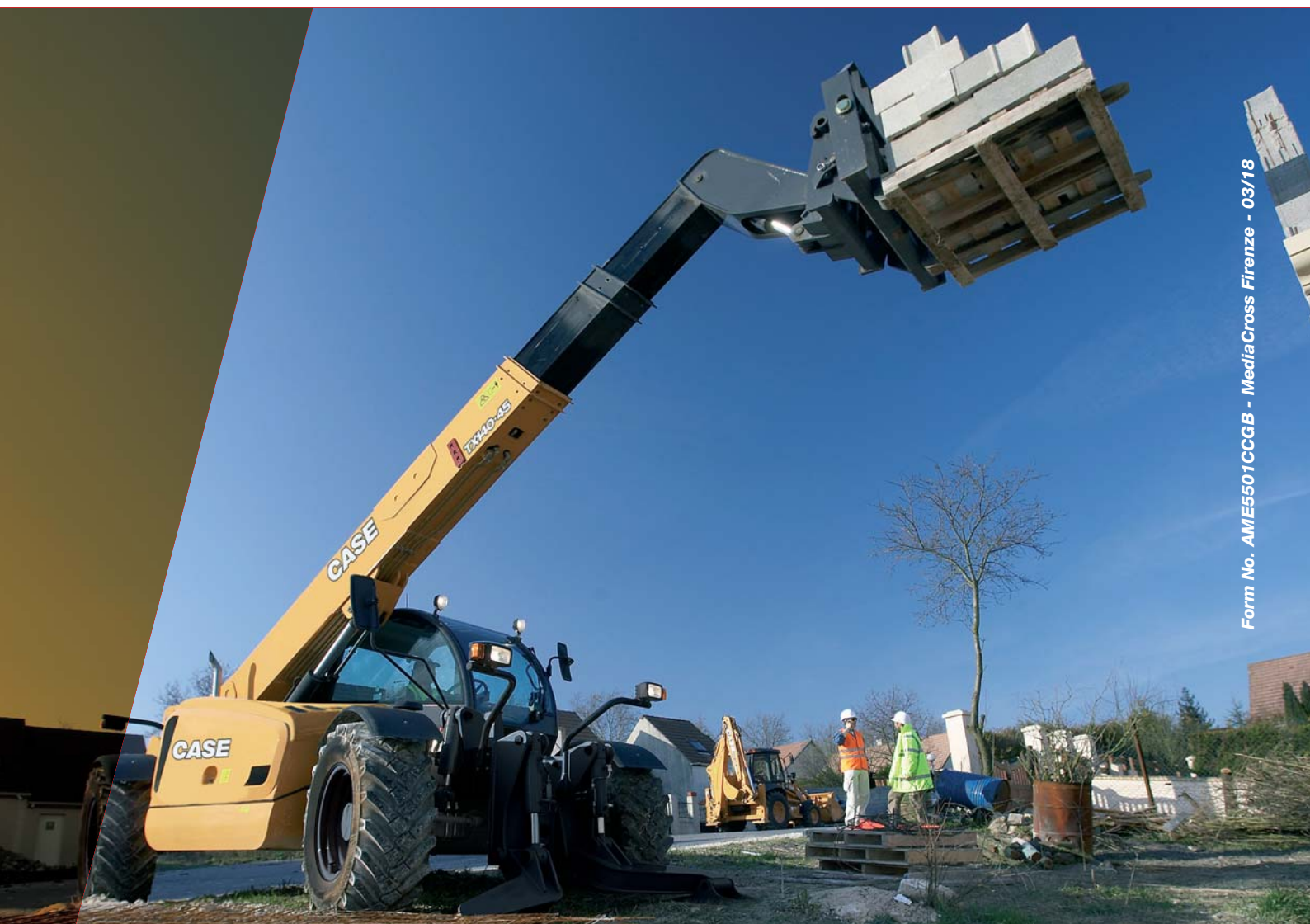
Roof wiper  
Steering wheel knob  
External screen gard  
2 front working lights  
1 rear working light  
Titable steering wheel

## OTHER

Twin batteries  
Cold start engine  
Limited slip differential on front axle  
Rotating beacon  
Trailer hook

www.casece.com  
**EXPERTS FOR THE REAL WORLD**  
**SINCE 1842**

**CASE**  
CONSTRUCTION



Form No. AME5501CCGB - MediaCross Firenze - 03/18

**CASE CONSTRUCTION EQUIPMENT**  
**CONTACT INFORMATION**

**CNH INDUSTRIAL - TORINO**  
Via Plava 80  
10135 Torino  
Italy

**CNH INTERNATIONAL S.A. - LUGANO**  
Riva Paradiso 14  
6902 Paradiso - Lugano  
Switzerland

**CNH INDUSTRIAL - MIDDLE EAST**  
Dubai Regional Representative Office  
Dubai Airport Free Zone, Building 2W  
Office 201 - PO Box 54588  
Dubai, United Arab Emirates

**CNH INDUSTRIAL - SOUTH AFRICA**  
N1 Business Park  
Slate Avenue  
Cosmosdal  
South Africa

**NOTE:** Standard and optional fittings can vary according to the demands and specific regulations of each country. The illustrations may include optional rather than standard fittings - consult your Case dealer. Furthermore, CNH Industrial reserves the right to modify machine specifications without incurring any obligation relating to such changes.

Conforms to directive 2006/42/EC

