

**CX C-SERIES HYDRAULIC EXCAVATORS  
CX145C SR | CX235C SR**

**CASE**  
CONSTRUCTION



**COMPACT  
PERFORMANCE**

[www.casece.com](http://www.casece.com)

**EXPERTS FOR THE REAL WORLD  
SINCE 1842**

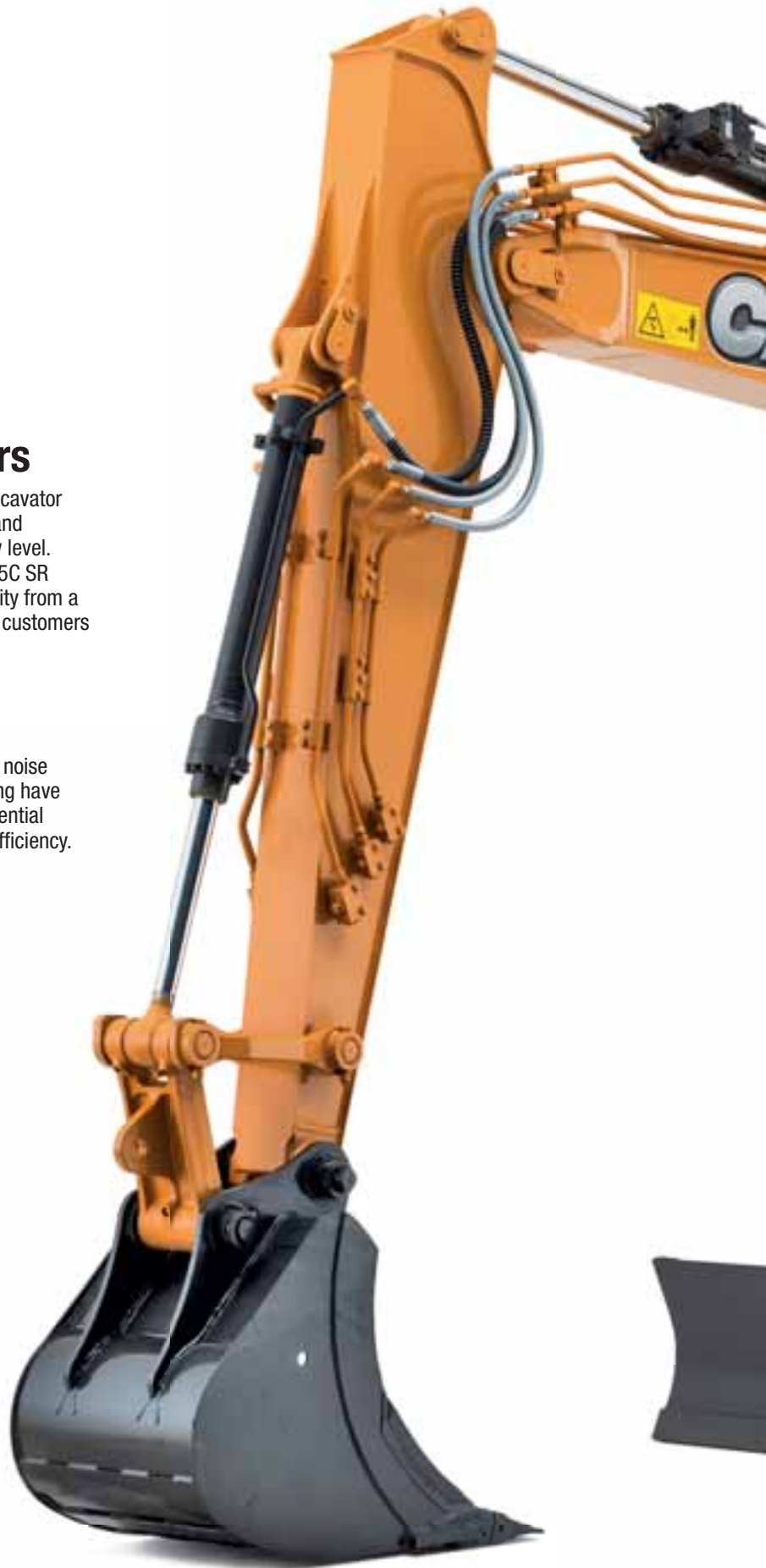
# CX C-SERIES HYDRAULIC EXCAVATORS

## Full specification excavators

Building on the proven success of the C-Series crawler excavator range, Case has developed the Short Radius CX145C SR and CX235C SR, taking performance and productivity to a new level. Featuring the Case Intelligent Hydraulic System, the CX145C SR and CX235C SR deliver maximum economy and productivity from a compact yet powerful design, reducing operating costs of customers and boosting productivity.

## Operator control

The new ROPS cab provides automotive levels of reduced noise and improved operator comfort. Visibility, space and seating have been improved and a new full-colour monitor delivers essential information and a camera feed for maximum safety and efficiency.





# CX C-SERIES HYDRAULIC EXCAVATORS



## Short swing radius

The short swing radius allows excellent operation even in confined spaces. The new CX145C SR and CX235C SR are the perfect machines for road construction, bridges projects and in urban construction sites, any jobsite where space is limited.

The new CASE SR machines are designed to increase productivity, giving the operator easier operation with performance, without the risk of machines damage, in other words superior safety on the job site.

## Energy efficiency

The Case Intelligent Hydraulic System (CIHS) incorporates a host of energy saving, performance enhancing functions, to boost efficiency and machine output.

In combination with powerful, fuel-efficient Tier 4 Interim diesel engines, this leads to fuel savings of up to 17% for the CX235C SR and up to 9% for the CX145C SR.

A simple operating mode dial delivers three working modes with Super Power set to provide maximum horsepower and hydraulic output.

A Powerboost function provides an 8 second boost for maximum digging performance.

Boom Economy Control increases energy efficiency during swing and boom lower operations, while Swing Relief Control further optimises energy use when slewing. Automatic Economy Control cuts energy use when the operating levers are in the neutral position and Spool Stroke Control delivers improved controllability in digging and levelling tasks.

The machines feature automatic engine idling and automatic engine shut down, to further cut unnecessary fuel use when not working. Pump Torque Variable Control provides perfect control of the engine and hydraulic system, further boosting economy. Despite this focus on reduced consumption, the SR excavators boast a 5% improvement in cycle times with a 6% improvement in lifting performance.

## Robust quality

The short radius machines continue a Case tradition of robust design and high quality build. By bringing together the highest quality components and materials, in a machine that has been designed to work productively, Case has further improved reliability and durability, reducing ownership costs and cutting downtime for the customer.



# CX C-SERIES HYDRAULIC EXCAVATORS



## Simplified maintenance

All filters are grouped together for easy access, reducing service time. In addition remote greasing points and standard EMS bushings cut greasing intervals to every 1,000 hours.

A synthetic filter extends hydraulic oil service intervals to 5,000 hours while engine oil change intervals are set at a competitive 500 working hours. Side-by-side coolers and radiators are easily accessed for cleaning and maintenance, with a removable mesh filter cutting downtime and boosting productivity for the customer.

A redesigned upper structure provides access to all service points from ground level, with large side opening access doors. A standard 100 litre/min refuelling pump with automatic stop function and larger tank keeps downtime to a minimum, ensuring maximum productivity for up to two working days.





# CX C-SERIES HYDRAULIC EXCAVATORS

## Operator comfort and safety

Case SR excavators take operator comfort to the next level, with a new 7% larger ROPS and FOPS Level 2 cab that delivers an almost automotive noise level.

An improved air conditioning system (28% more airflow and 20% increase in performance), multi-adjustable suspension seating, increased foot space, cup holder and storage compartments deliver the most productive working environment possible.

Visibility is improved and the Case machines feature a new full-colour Multifunction Display. This extra large LED screen provides important machine information in a clear, easy to use menu format. Rear and side view cameras can be viewed using a split-screen facility, while vital machine data remains clearly visible.

An ECO gauge provides a constant real-time recording of fuel consumption, allowing the operator to reduce power and conserve fuel when possible, improving efficiency and productivity. The monitor also provides access to on-board diagnostics, reducing downtime for service and maintenance.







# TELEMATICS



**CASE**®  
CONSTRUCTION

**SiteWatch**™

## THE SCIENCE BIT

The Case SiteWatch telematics system uses a high-tech control unit mounted on each machine to collate information from that machine and from GPS satellites. This data is then sent wirelessly through the mobile communication networks to the Case Telematics Web Portal.

### SiteWatch: centralised fleet control benefits at your fingertips

#### 📶 Measure your true asset availability and optimise it

- Eliminate the “phantom fleet”: SiteWatch allows to identify spare units or under loaded machines on each site.
- Become able to reallocate units where they are more needed.
- Forward Maintenance Planning is easier since the actualised working hours are always available.
- Extend the benefits of SiteWatch to the rest of your fleet: SiteWatch can be installed on the units of other brands as well.

#### 📶 Challenge your Total Cost of Ownership!

- Being able to compare the fuel usage of different machine types will allow you choose the right equipment.
- Save on transport costs with planned and grouped maintenance tasks.
- Peace of mind, optimised uptime and lower repair costs: with preventive maintenance you can for example be alerted if the engine needs to be serviced and avoid a disruptive breakdown.
- Be able to compare your asset Return On Investment on different sites.
- Your equipment is used only during working hours. You can set up alerts so that you know if it is in use during the weekend or at night.
- Integrate with the programmed maintenance package, so that you can be sure every machine is at the right place at the right time.

#### 📶 More Safety, Lower Insurance Premium

- Keep thieves away: dissuade them from attacking your asset because it is geo-localised. SiteWatch is hidden so that thieves can't find it quickly.
- Your fleet is used only where you decide. You can define a virtual fence and receive an email when a machine exits that perimeter.



# CX C-SERIES HYDRAULIC EXCAVATORS

## CX145C SR

### Specifications

#### Engine

Model \_\_\_\_\_ Tier 4 interim certified ISUZU AM-4JJ1X  
Type \_\_\_\_\_ Water-cooled, 4-cycle diesel, 4-cylinder in line,  
High pressure common rail system (electric control), Turbocharger with  
air cooled intercooler, DPD system  
Number of cylinders \_\_\_\_\_ 4  
Bore/Stroke \_\_\_\_\_ 95.4 x 104.9 mm  
Horsepower ISO 9249 \_\_\_\_\_ 74.9 kW at 2000 min<sup>-1</sup>  
Maximum torque ISO 9249 \_\_\_\_\_ 359 Nm at 1600 min<sup>-1</sup>

#### Hydraulic system

Max oil flow \_\_\_\_\_ 2 x 129 l/min @ 2000 min<sup>-1</sup>  
2 variable displacement axial piston pumps with regulating system  
Working circuit pressure \_\_\_\_\_  
Boom/Arm/Bucket \_\_\_\_\_ 34.3 MPa  
Boom/Arm/Bucket (with auto power up) \_\_\_\_\_ 36.3 MPa  
Swing circuit \_\_\_\_\_ 28.0 MPa  
Travel circuit \_\_\_\_\_ 34.3 Mpa

#### Swing

Maximum swing speed \_\_\_\_\_ 10.6 min<sup>-1</sup>

#### Travel

Travel motor \_\_\_\_\_ Fixed displacement axial piston motor  
Max travel speed \_\_\_\_\_ 5.6 km/h (Automatic travel speed shifting)  
Low travel speed \_\_\_\_\_ 3.4 km/h  
Gradeability \_\_\_\_\_ 70% (35°)  
Drawbar pull \_\_\_\_\_ 116 kN

#### Electrical system

Circuit \_\_\_\_\_ 24 V  
Alternator \_\_\_\_\_ 50 Amp

#### Undercarriage

|  | BLADE               | LC       |
|--|---------------------|----------|
| Number of carriers rollers (each side) _____ | 1 _____             | 2 _____  |
| Number of track rollers (each side) _____    | 7 _____             | 7 _____  |
| Number of shoes (each side) _____            | 43 _____            | 47 _____ |
| Type of shoe _____                           | Triple grouser shoe |          |

#### Capacities

Fuel tank \_\_\_\_\_ 200 l  
Hydraulic system \_\_\_\_\_ 158 l  
Cooling system \_\_\_\_\_ 15.3 l

### Weight and ground pressure

With 2.50 m Arm , 0.5 m<sup>3</sup> bucket, operator, lubricant, coolant and full fuel tank and top guard OPG level 2

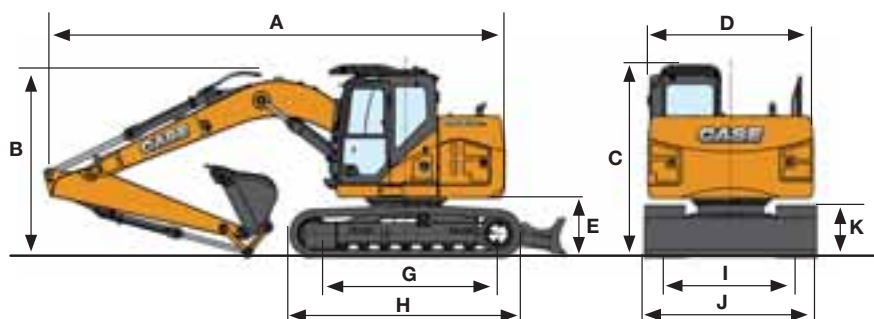
| CX145C SR LC        | Weight (kg) | Ground pressure (MPa) |
|---------------------|-------------|-----------------------|
| 600 mm grouser shoe | 14.400      | 0.036                 |

| CX145C SR BLADE     | Weight (kg) | Ground pressure (MPa) |
|---------------------|-------------|-----------------------|
| 600 mm grouser shoe | 14.500      | 0.039                 |

With 2.10 m Arm , 0.45 m<sup>3</sup> bucket, operator, lubricant, coolant and full fuel tank and top guard OPG level 2

| CX145C SR BLADE OFFSET BOOM | Weight (kg) | Ground pressure (MPa) |
|-----------------------------|-------------|-----------------------|
| 600 mm grouser shoe         | 15.200      | 0.041                 |

## General dimensions



### CX145C SR LC

|   | Arm 2.50 m | Arm 3.00 m | Arm 2.10 m |
|---|------------|------------|------------|
| Overall length (without attachment)               | 3500 mm    | 3500 mm    | 3500 mm    |
| A Overall length (with attachment)                | 7220 mm    | 7180 mm    | 7210 mm    |
| B Overall height (with attachment)                | 2900 mm    | 2900 mm    | 2900 mm    |
| C Cab height                                      | 2900 mm    | 2900 mm    | 2900 mm    |
| D Upper structure overall width                   | 2490 mm    | 2490 mm    | 2490 mm    |
| Swing (rear end) radius                           | 1490 mm    | 1490 mm    | 1490 mm    |
| E Clearance height under upper structure          | 880 mm     | 880 mm     | 880 mm     |
| F Minimum ground clearance                        | 440 mm     | 440 mm     | 440 mm     |
| G Wheel base (Center to center of wheels)         | 3040 mm    | 3040 mm    | 3040 mm    |
| H Crawler overall length                          | 3760 mm    | 3760 mm    | 3760 mm    |
| I Track gauge                                     | 1990 mm    | 1990 mm    | 1990 mm    |
| J Undercarriage overall width (with 500 mm shoes) | 2490 mm    | 2490 mm    | 2490 mm    |
| K Crawler tracks height                           | 790 mm     | 790 mm     | 790 mm     |

### CX145C SR BLADE

|   | Arm 2.50 m | Arm 3.00 | Arm 2.10 m | OFFSET BOOM<br>Arm 2.10 m |
|---|------------|----------|------------|---------------------------|
| Overall length (without attachment)               | 4160 mm    | 4160 mm  | 4160 mm    | 4160 mm                   |
| A Overall length (with attachment)                | 7880 mm    | 7840 mm  | 7870 mm    | 7680 mm                   |
| B Overall height (with attachment)                | 2900 mm    | 2900 mm  | 2900 mm    | 2900 mm                   |
| C Cab height                                      | 2900 mm    | 2900 mm  | 2900 mm    | 2900 mm                   |
| D Upper structure overall width                   | 2490 mm    | 2490 mm  | 2490 mm    | 2490 mm                   |
| Swing (rear end) radius                           | 1490 mm    | 1490 mm  | 1490 mm    | 1490 mm                   |
| E Clearance height under upper structure          | 880 mm     | 880 mm   | 880 mm     | 880 mm                    |
| F Minimum ground clearance                        | 440 mm     | 440 mm   | 440 mm     | 440 mm                    |
| G Wheel base (Center to center of wheels)         | 2790 mm    | 2790 mm  | 2790 mm    | 2790 mm                   |
| H Crawler overall length                          | 3500 mm    | 3500 mm  | 3500 mm    | 3500 mm                   |
| I Track gauge                                     | 1990 mm    | 1990 mm  | 1990 mm    | 1990 mm                   |
| J Undercarriage overall width (with 500 mm shoes) | 2490 mm    | 2490 mm  | 2490 mm    | 2490 mm                   |
| K Crawler tracks height                           | 790 mm     | 790 mm   | 790 mm     | 790 mm                    |

## Blade dimensions and range

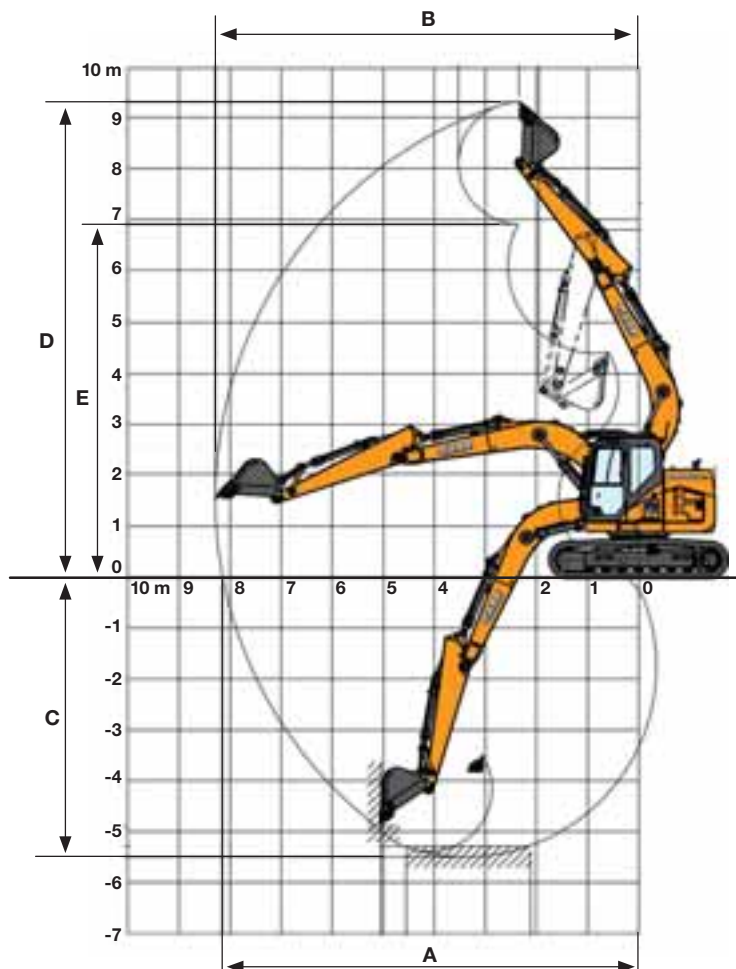
### CX145C SR BLADE / OFFSET BOOM

|                                   |                         |
|-----------------------------------|-------------------------|
| Blade dimensions (width x height) | 2490/2590/2690 x 570 mm |
| Blade range (up/down)             | 510 x 520 mm            |

# CX C-SERIES HYDRAULIC EXCAVATORS

## CX145C SR

### Performance data



#### CX145C SR LC/CX145C SR BLADE

#### Arm 2.50 m

#### Arm 3.00

#### Arm 2.10 m

#### OFFSET BOOM Arm 2.10 m

|                        | Arm 2.50 m | Arm 3.00 | Arm 2.10 m | OFFSET BOOM<br>Arm 2.10 m |
|------------------------|------------|----------|------------|---------------------------|
| Boom length            | 4630 mm    | 4630 mm  | 4630 mm    | 4500 mm                   |
| Bucket radius          | 1200 mm    | 1200 mm  | 1200 mm    | 1200 mm                   |
| Bucket wrist action    | 178 °      | 178 °    | 178 °      | 178 °                     |
| A Maximum reach at GRP | 8140 mm    | 8600 mm  | 7780 mm    | 7430 mm                   |
| B Maximum reach        | 8290 mm    | 8740 mm  | 7940 mm    | 7590 mm                   |
| C Max. digging depth   | 5510 mm    | 6010 mm  | 5110 mm    | 4910 mm                   |
| D Max. digging height  | 9340 mm    | 9690 mm  | 9060 mm    | 8630 mm                   |
| E Max. dumping height  | 6940 mm    | 7290 mm  | 6660 mm    | 6250 mm                   |

### Digging force With 0.5 m<sup>3</sup> bucket (ISO 6015)

#### CX145C SR LC/CX145C SR BLADE

#### Arm 2.50 m

#### Arm 3.00

#### Arm 2.10 m

#### OFFSET BOOM Arm 2.10 m

|                      | Arm 2.50 m | Arm 3.00 | Arm 2.10 m | OFFSET BOOM<br>Arm 2.10 m |
|----------------------|------------|----------|------------|---------------------------|
| Arm digging force    | 62 kN      | 56 kN    | 70 kN      | 59.5 kN                   |
| - with auto power up | 66 kN      | 60 kN    | 74 kN      |                           |
| Bucket digging force | 90 kN      | 90 kN    | 90 kN      | 89.3 kN                   |
| - with auto power up | 95 kN      | 95 kN    | 95 kN      |                           |

# Lifting capacity

| Front<br>360° | REACH |       |       |       |       |       |                   |
|---------------|-------|-------|-------|-------|-------|-------|-------------------|
|               | 0 m   | 1.5 m | 3.0 m | 4.5 m | 6.0 m | 7.5 m | At max reach<br>m |

## CX145C SR. LC. Standard arm. 2.50 m arm length, 0.50 m<sup>3</sup> bucket, 600G shoes, max reach 8.29 m

|        |  |  |        |        |       |       |        |        |        |      |  |       |       |       |       |      |
|--------|--|--|--------|--------|-------|-------|--------|--------|--------|------|--|-------|-------|-------|-------|------|
| 7.5 m  |  |  |        |        |       |       | 2360 * | 2360 * |        |      |  |       | 1300* | 1300* | 5.24  |      |
| 6.0 m  |  |  |        |        |       |       | 2960 * | 2960 * | 2320 * | 2210 |  |       | 1100* | 1100* | 6.70  |      |
| 4.5 m  |  |  |        |        |       |       | 3690 * | 3510   | 2940 * | 2170 |  | 1100* | 1100* | 1040* | 1040* | 7.52 |
| 3.0 m  |  |  |        | 7250*  | 6530  |       | 5260 * | 3360   | 3360   | 2070 |  | 2280  | 1370  | 1040* | 1040* | 7.92 |
| 1.5 m  |  |  |        | 9800*  | 5880  |       | 5190   | 3100   | 3220   | 1950 |  | 2230  | 1320  | 1110* | 1110* | 8.00 |
| 0 m    |  |  | 2770 * | 2770 * | 8330* | 5430  | 4960   | 2900   | 3110   | 1850 |  | 2180  | 1280  | 1240* | 1200  | 7.77 |
| -1.5 m |  |  | 5160 * | 5160 * | 9620* | 5390  | 4860   | 2810   | 3060   | 1810 |  |       |       | 1500* | 1360  | 7.22 |
| -3.0 m |  |  | 8100 * | 8100 * | 7980* | 5590  | 4890   | 2860   | 3100   | 1870 |  |       |       | 2060* | 1720  | 6.26 |
| -4.5 m |  |  |        |        | 4510* | 4510* | 2650 * | 2650 * |        |      |  |       |       | 2200* | 2200* | 4.69 |

## CX145C SR. LC. Short arm. 2.10 m arm length, 0.55 m<sup>3</sup> bucket, 600G shoes, max reach 7.94 m

|        |  |  |        |        |       |       |        |        |        |      |  |       |      |       |       |      |
|--------|--|--|--------|--------|-------|-------|--------|--------|--------|------|--|-------|------|-------|-------|------|
| 7.5 m  |  |  |        |        |       |       | 1980 * | 1980 * |        |      |  |       |      | 1600* | 1600* | 4.63 |
| 6.0 m  |  |  |        |        |       |       | 3200 * | 3200 * | 2180 * | 2140 |  |       |      | 1330* | 1330* | 6.26 |
| 4.5 m  |  |  |        | 4580*  | 4580* |       | 4370 * | 3500   | 3330 * | 2110 |  |       |      | 1250* | 1250* | 7.14 |
| 3.0 m  |  |  |        | 8030*  | 6420  |       | 5390   | 3270   | 3300   | 2020 |  | 1620* | 1330 | 1250* | 1250* | 7.57 |
| 1.5 m  |  |  |        | 9970*  | 5660  |       | 5100   | 3020   | 3170   | 1900 |  | 2160* | 1290 | 1320* | 1240  | 7.65 |
| 0 m    |  |  |        |        | 7620* | 5310  | 4980   | 2830   | 3070   | 1810 |  |       |      | 1470* | 1280  | 7.41 |
| -1.5 m |  |  | 5590 * | 5590 * | 9320* | 5370  | 4830   | 2790   | 3050   | 1790 |  |       |      | 1790* | 1470  | 6.82 |
| -3.0 m |  |  | 8330 * | 8330 * | 7140* | 5500  | 4840   | 2870   |        |      |  |       |      | 2500* | 1940  | 5.80 |
| -4.5 m |  |  |        |        | 3060* | 3060* |        |        |        |      |  |       |      | 2240* | 2240* | 3.79 |

## CX145C SR. LC. Long arm. 3.00 m arm length, 0.37 m<sup>3</sup> bucket, 600G shoes, max reach 8.76 m

|        |        |       |        |        |       |      |        |        |        |      |  |       |      |       |       |      |
|--------|--------|-------|--------|--------|-------|------|--------|--------|--------|------|--|-------|------|-------|-------|------|
| 7.5 m  |        |       |        |        |       |      | 2340 * | 2340 * |        |      |  |       |      | 1270* | 1270* | 5.98 |
| 6.0 m  |        |       |        |        |       |      | 2750 * | 2750 * | 2290 * | 2290 |  |       |      | 1110* | 1110* | 7.27 |
| 4.5 m  |        |       |        |        |       |      | 3070 * | 3070   | 2730 * | 2240 |  | 2000* | 1460 | 1060* | 1060* | 8.02 |
| 3.0 m  |        |       |        | 4640*  | 4640* |      | 4250 * | 3440   | 3370 * | 2120 |  | 2320  | 1410 | 1070* | 1070* | 8.40 |
| 1.5 m  |        |       |        | 8960*  | 6060  |      | 5270 * | 3160   | 3260   | 1980 |  | 2250  | 1340 | 1130* | 1060  | 8.47 |
| 0 m    |        |       | 2790 * | 2790 * | 9520* | 5460 | 4980   | 2910   | 3130   | 1860 |  | 2190  | 1280 | 1250* | 1080  | 8.26 |
| -1.5 m | 3860 * | 3860* | 4690 * | 4690 * | 9350* | 5300 | 4830   | 2780   | 3050   | 1790 |  | 2160  | 1260 | 1480* | 1200  | 7.74 |
| -3.0 m | 5020 * | 5020* | 6880 * | 6880 * | 8720* | 5370 | 4840   | 2810   | 3070   | 1810 |  |       |      | 1950* | 1470  | 6.85 |
| -4.5 m |        |       | 9040 * | 9040 * | 5870* | 5440 | 3900 * | 2900   |        |      |  |       |      | 2370* | 2160  | 5.44 |

\* Hydraulic capacity 87%

# CX C-SERIES HYDRAULIC EXCAVATORS

## CX145C SR

### Lifting capacity

| Front<br>360° | REACH |       |       |       |       |       |                   |
|---------------|-------|-------|-------|-------|-------|-------|-------------------|
|               | 0 m   | 1.5 m | 3.0 m | 4.5 m | 6.0 m | 7.5 m | At max reach<br>m |

#### CX145C SR. BLADE DOWN. Standard arm. 2.50 m arm length, 0.50 m<sup>3</sup> bucket, 600G shoes, max reach 8.29 m

|        |  |  |       |       |       |       |       |       |       |      |       |       |       |       |      |
|--------|--|--|-------|-------|-------|-------|-------|-------|-------|------|-------|-------|-------|-------|------|
| 7.5 m  |  |  |       |       |       |       | 2360* | 2360* |       |      |       |       | 1300* | 1300* | 5.24 |
| 6.0 m  |  |  |       |       |       |       | 2960* | 2960* | 2320* | 2270 |       |       | 1100* | 1100* | 6.70 |
| 4.5 m  |  |  |       |       |       |       | 3690* | 3590  | 2940* | 2230 | 1100* | 1100* | 1040* | 1040* | 7.52 |
| 3.0 m  |  |  |       |       | 7250* | 6760  | 5260* | 3450  | 3870* | 2130 | 2310* | 1410  | 1040* | 1040* | 7.92 |
| 1.5 m  |  |  |       |       | 9800* | 6100  | 6330* | 3190  | 4730* | 2000 | 2770* | 1360  | 1110* | 1110* | 8.00 |
| 0 m    |  |  | 2770* | 2770* | 8330* | 5650  | 6740* | 2980  | 4870* | 1900 | 2480  | 1310  | 1240* | 1240  | 7.77 |
| -1.5 m |  |  | 5160* | 5160* | 9620* | 5610  | 6520* | 2900  | 4640* | 1860 |       |       | 1500* | 1390  | 7.22 |
| -3.0 m |  |  | 8100* | 8100* | 7980* | 5710  | 5470* | 2950  | 3510* | 1920 |       |       | 2060* | 1770  | 6.26 |
| -4.5 m |  |  |       |       | 4510* | 4510* | 2650* | 2650* |       |      |       |       | 2200* | 2200* | 4.69 |

#### CX145C SR. BLADE DOWN. Short arm. 2.10 m arm length, 0.55 m<sup>3</sup> bucket, 600G shoes, max reach 7.94 m

|        |  |  |       |       |       |       |       |       |       |       |       |      |       |       |      |
|--------|--|--|-------|-------|-------|-------|-------|-------|-------|-------|-------|------|-------|-------|------|
| 7.5 m  |  |  |       |       |       |       | 1980* | 1980* |       |       |       |      | 1600* | 1600* | 4.63 |
| 6.0 m  |  |  |       |       |       |       | 3200* | 3200* | 2180* | 2180* |       |      | 1330* | 1330* | 6.26 |
| 4.5 m  |  |  |       |       | 4580* | 4580* | 4370* | 3590  | 3330* | 2170  |       |      | 1250* | 1250* | 7.14 |
| 3.0 m  |  |  |       |       | 8030* | 6660  | 5440* | 3360  | 4400* | 2070  | 1620* | 1360 | 1250* | 1250* | 7.57 |
| 1.5 m  |  |  |       |       | 9970* | 5890  | 6480* | 3110  | 4780* | 1950  | 2160* | 1320 | 1320* | 1270  | 7.65 |
| 0 m    |  |  |       |       | 7620* | 5530  | 6700* | 2920  | 4830* | 1860  |       |      | 1470* | 1320  | 7.41 |
| -1.5 m |  |  | 5590* | 5590* | 9320* | 5590  | 6310* | 2880  | 4430* | 1840  |       |      | 1790* | 1510  | 6.82 |
| -3.0 m |  |  | 8330* | 8330* | 7140* | 5710  | 4960* | 2960  |       |       |       |      | 2500* | 1990  | 5.80 |
| -4.5 m |  |  |       |       | 3060* | 3060* |       |       |       |       |       |      | 2240* | 2240* | 3.79 |

#### CX145C SR. BLADE DOWN. Long arm. 3.00 m arm length, 0.37 m<sup>3</sup> bucket, 600G shoes, max reach 8.76 m

|        |       |       |       |       |       |       |       |       |       |       |       |      |       |       |      |
|--------|-------|-------|-------|-------|-------|-------|-------|-------|-------|-------|-------|------|-------|-------|------|
| 7.5 m  |       |       |       |       |       |       | 2340* | 2340* |       |       |       |      | 1270* | 1270* | 5.98 |
| 6.0 m  |       |       |       |       |       |       | 2750* | 2750* | 2290* | 2290* |       |      | 1110* | 1110* | 7.27 |
| 4.5 m  |       |       |       |       |       |       | 3070* | 3070* | 2730* | 2290  | 2000* | 1420 | 1060* | 1060  | 8.02 |
| 3.0 m  |       |       |       |       | 4640* | 4640* | 4250* | 3530  | 3510* | 2180  | 2570* | 1450 | 1070* | 1070* | 8.40 |
| 1.5 m  |       |       |       |       | 8960* | 6300  | 6020* | 3260  | 4580* | 2040  | 3080* | 1380 | 1130* | 1090  | 8.47 |
| 0 m    |       |       | 2790* | 2790* | 9520* | 5680  | 6660* | 3000  | 4840* | 1910  | 3310* | 1320 | 1250* | 1110  | 8.26 |
| -1.5 m | 3860* | 3860* | 4690* | 4690* | 9350* | 5520  | 6610* | 2870  | 4750* | 1840  | 2470* | 1300 | 1480* | 1230  | 7.74 |
| -3.0 m | 5020* | 5020* | 6880* | 6880* | 8720* | 5590  | 5880* | 2890  | 4060* | 1870  |       |      | 1950* | 1510  | 6.85 |
| -4.5 m |       |       | 9040* | 9040* | 5870* | 5630  | 3900* | 2980* |       |       |       |      | 2370* | 2220  | 5.44 |

#### CX145C SR. OFFSET BOOM - BLADE DOWN. Standard arm. 2.11 m arm length, 0.45 m<sup>3</sup> bucket, 600G shoes, max reach 7.59 m

|        |  |  |       |       |       |       |       |       |       |      |  |  |       |       |      |
|--------|--|--|-------|-------|-------|-------|-------|-------|-------|------|--|--|-------|-------|------|
| 7.5 m  |  |  |       |       |       |       |       |       |       |      |  |  | 1780* | 1780* | 3.95 |
| 6.0 m  |  |  |       |       |       |       | 2410* | 2410* |       |      |  |  | 1520* | 1520* | 5.82 |
| 4.5 m  |  |  |       |       | 3270* | 3270* | 3200* | 3200* | 2430* | 2180 |  |  | 1490* | 1490* | 6.76 |
| 3.0 m  |  |  |       |       | 6520* | 6520* | 4650* | 3400* | 3130* | 2040 |  |  | 1550* | 1390  | 7.22 |
| 1.5 m  |  |  |       |       | 8470* | 5620  | 5590* | 3010  | 4170* | 1860 |  |  | 1690* | 1280  | 7.31 |
| 0 m    |  |  |       |       | 7260* | 5050  | 5910* | 2710  | 4260* | 1720 |  |  | 1970* | 1300  | 7.06 |
| -1.5 m |  |  | 5050* | 5050* | 8590* | 5040  | 5710* | 2600  | 4010* | 1670 |  |  | 2530* | 1490  | 6.44 |
| -3.0 m |  |  | 7080* | 7080* | 6960* | 5240  | 4690* | 2720  |       |      |  |  | 3140* | 2050  | 5.34 |

\* Hydraulic capacity 87%



# Lifting capacity

| Front<br>360° | REACH |       |       |       |       |       |              |  |   |  |  |  |  |
|---------------|-------|-------|-------|-------|-------|-------|--------------|--|---|--|--|--|--|
|               | 0 m   | 1.5 m | 3.0 m | 4.5 m | 6.0 m | 7.5 m | At max reach |  | m |  |  |  |  |

## CX145C SR. BLADE UP. Standard arm. 2.50 m arm length, 0.50 m<sup>3</sup> bucket, 600G shoes, max reach 8.29 m

|        |  |  |        |        |       |       |        |        |        |      |       |       |       |       |       |      |
|--------|--|--|--------|--------|-------|-------|--------|--------|--------|------|-------|-------|-------|-------|-------|------|
| 7.5 m  |  |  |        |        |       |       | 2360 * | 2360 * |        |      |       |       | 1300* | 1300* | 5.24  |      |
| 6.0 m  |  |  |        |        |       |       | 2960 * | 2960 * | 2320 * | 2150 |       |       | 1100* | 1100* | 6.70  |      |
| 4.5 m  |  |  |        |        |       |       | 3690 * | 3430   | 2840   | 2110 | 1100* | 1100* | 1040* | 1040* | 7.52  |      |
| 3.0 m  |  |  |        |        |       | 7250* | 6380   | 4470   | 3260   | 2730 | 2010  | 1840  | 1320  | 1040* | 1040* | 7.92 |
| 1.5 m  |  |  |        |        |       | 8560  | 5710   | 4190   | 3010   | 2610 | 1890  | 1780  | 1270  | 1110* | 1110* | 8.00 |
| 0 m    |  |  | 2770 * | 2770 * | 7950  | 5260  | 3970   | 2800   | 2500   | 1780 | 1740  | 1230  | 1240* | 1150  | 7.77  |      |
| -1.5 m |  |  | 5160 * | 5160 * | 7960  | 5220  | 3870   | 2720   | 2450   | 1740 |       |       | 1500* | 1300  | 7.22  |      |
| -3.0 m |  |  | 8100 * | 8100 * | 7920  | 5330  | 3920   | 2770   | 2510   | 1800 |       |       | 2060* | 1660  | 6.26  |      |
| -4.5 m |  |  |        |        | 4510* | 4510* | 2650 * | 2650 * |        |      |       |       | 2200* | 2200* | 4.69  |      |

## CX145C SR. BLADE UP. Short arm. 2.10 m arm length, 0.55 m<sup>3</sup> bucket, 600G shoes, max reach 7.94 m

|        |  |  |        |        |       |       |        |        |        |      |      |       |       |       |      |      |
|--------|--|--|--------|--------|-------|-------|--------|--------|--------|------|------|-------|-------|-------|------|------|
| 7.5 m  |  |  |        |        |       |       | 1980 * | 1980 * |        |      |      |       | 1600* | 1600* | 4.63 |      |
| 6.0 m  |  |  |        |        |       |       | 3200 * | 3200 * | 2180 * | 2070 |      |       | 1330* | 1330* | 6.26 |      |
| 4.5 m  |  |  |        |        |       | 4580* | 4580*  | 4370 * | 3400   | 2780 | 2050 |       | 1250* | 1250* | 7.14 |      |
| 3.0 m  |  |  |        |        |       | 8030* | 6250   | 4380   | 3170   | 2680 | 1950 | 1620* | 1270  | 1250* | 1250 | 7.57 |
| 1.5 m  |  |  |        |        |       | 8300  | 5490   | 4100   | 2920   | 2550 | 1840 | 1740  | 1230  | 1320* | 1190 | 7.65 |
| 0 m    |  |  |        |        |       | 7620* | 5150   | 3900   | 2740   | 3460 | 1750 |       | 1470* | 1230  | 7.41 |      |
| -1.5 m |  |  | 5590 * | 5590 * | 7940  | 5210  | 3850   | 2690   | 2440   | 1730 |      |       | 1790* | 1410  | 6.82 |      |
| -3.0 m |  |  | 8330 * | 8330 * | 7140* | 5340  | 3930   | 2780   |        |      |      |       | 2500* | 1870  | 5.80 |      |
| -4.5 m |  |  |        |        | 3060* | 3060* |        |        |        |      |      |       | 2240* | 2240* | 3.79 |      |

## CX145C SR. BLADE UP. Long arm. 3.00 m arm length, 0.37 m<sup>3</sup> bucket, 600G shoes, max reach 8.76 m

|        |        |       |        |        |       |       |        |        |        |      |      |      |       |       |      |      |
|--------|--------|-------|--------|--------|-------|-------|--------|--------|--------|------|------|------|-------|-------|------|------|
| 7.5 m  |        |       |        |        |       |       | 2340 * | 2340 * |        |      |      |      | 1270* | 1270* | 5.98 |      |
| 6.0 m  |        |       |        |        |       |       | 2750 * | 2750 * | 2290 * | 2230 |      |      | 1110* | 1110* | 7.27 |      |
| 4.5 m  |        |       |        |        |       |       | 3070 * | 3070 * | 2730 * | 2170 | 1930 | 1410 | 1060* | 1060* | 8.02 |      |
| 3.0 m  |        |       |        |        |       | 4640* | 4640*  | 4250 * | 3350   | 2790 | 2060 | 1870 | 1360  | 1070* | 1060 | 8.40 |
| 1.5 m  |        |       |        |        |       | 8780  | 5890   | 4270   | 3070   | 2640 | 1920 | 1800 | 1290  | 1130* | 1010 | 8.47 |
| 0 m    |        |       | 2790 * | 2790 * | 8060  | 5290  | 3990   | 2820   | 2510   | 1790 | 1740 | 1230 | 1250* | 1040  | 8.26 |      |
| -1.5 m | 3860 * | 3860* | 4690 * | 4690 * | 7830  | 5140  | 3850   | 2690   | 2430   | 1720 | 1720 | 1210 | 1480* | 1150  | 7.74 |      |
| -3.0 m | 5020 * | 5020* | 6880 * | 6880 * | 7900  | 5210  | 3860   | 2710   | 2460   | 1750 |      |      | 1950* | 1420  | 6.85 |      |
| -4.5 m |        |       | 9040 * | 9040 * | 5870* | 5280  | 3880   | 2810   |        |      |      |      | 2370* | 2080  | 5.44 |      |

## CX145C SR. OFFSET BOOM - BLADE UP. Standard arm. 2.11 m arm length, 0.45 m<sup>3</sup> bucket, 600G shoes, max reach 7.59 m

|        |  |  |        |        |       |       |        |        |        |        |      |  |       |       |      |
|--------|--|--|--------|--------|-------|-------|--------|--------|--------|--------|------|--|-------|-------|------|
| 7.5 m  |  |  |        |        |       |       |        |        |        |        |      |  | 1780* | 1780* | 3.95 |
| 6.0 m  |  |  |        |        |       |       | 2410 * | 2410 * |        |        |      |  | 1520* | 1520* | 5.82 |
| 4.5 m  |  |  |        |        |       | 3270* | 3270*  | 3200 * | 3200 * | 2430 * | 2060 |  | 1490* | 1490* | 6.76 |
| 3.0 m  |  |  |        |        |       | 6520* | 6310*  | 4400   | 3210   | 2670   | 1920 |  | 1550* | 1290  | 7.22 |
| 1.5 m  |  |  |        |        |       | 8070  | 5230   | 4040   | 2830   | 2490   | 1740 |  | 1690* | 1190  | 7.31 |
| 0 m    |  |  |        |        |       | 7260* | 4670   | 3710   | 2530   | 2330   | 1600 |  | 1780  | 1210  | 7.06 |
| -1.5 m |  |  | 5050 * | 5050 * | 7370  | 4660  | 3580   | 2410   | 2280   | 1550   |      |  | 2040  | 1390  | 6.44 |
| -3.0 m |  |  | 7080 * | 7080 * | 6960* | 4860  | 3700   | 2540   |        |        |      |  | 2790  | 1910  | 5.34 |

\* Hydraulic capacity 87%

# CX C-SERIES HYDRAULIC EXCAVATORS

## CX235C SR

## Specifications

### Engine

Model \_\_\_\_\_ Tier 4 interim certified ISUZU AM-4HK1X  
Type \_\_\_\_\_ Water-cooled, 4-cycle diesel, 4-cylinder in line,  
High pressure common rail system (electric control), Turbocharger  
with air cooled intercooler, DPD system  
Number of cylinders \_\_\_\_\_ 4  
Bore/Stroke \_\_\_\_\_ 115 x 125 mm  
Horsepower ISO 9249 \_\_\_\_\_ 119.3 kW at 1800 min<sup>-1</sup>  
Maximum torque ISO 9249 \_\_\_\_\_ 621 Nm at 1500 min<sup>-1</sup>

### Hydraulic system

Max oil flow \_\_\_\_\_ 2 x 211 l/min @ 1800 min<sup>-1</sup>  
2 variable displacement axial piston pumps with regulating system  
Working circuit pressure \_\_\_\_\_  
Boom/Arm/Bucket \_\_\_\_\_ 34.3 MPa  
Boom/Arm/Bucket (with auto power up) \_\_\_\_\_ 36.4 MPa  
Swing circuit \_\_\_\_\_ 29.4 MPa  
Travel circuit \_\_\_\_\_ 34.3 Mpa

### Swing

Maximum swing speed \_\_\_\_\_ 11.8 min<sup>-1</sup>

### Travel

Travel motor \_\_\_\_\_ Variable displacement axial piston motor  
Max travel speed \_\_\_\_\_ 5.0 km/h (Automatic travel speed shifting)  
Low travel speed \_\_\_\_\_ 3.2 km/h  
Gradeability \_\_\_\_\_ 70% (35°)  
Drawbar pull \_\_\_\_\_ 201 kN

### Electrical system

Circuit \_\_\_\_\_ 24 V  
Alternator \_\_\_\_\_ 50 Amp

### Undercarriage

|  | BLADE               | LC |
|--|---------------------|----|
| Number of carriers rollers (each side) _____ | 2                   | 2  |
| Number of track rollers (each side) _____    | 7                   | 8  |
| Number of shoes (each side) _____            | 46                  | 49 |
| Type of shoe _____                           | Triple grouser shoe |    |

### Capacities

Fuel tank \_\_\_\_\_ 320 l  
Hydraulic system \_\_\_\_\_ 252 l  
Cooling system \_\_\_\_\_ 30.9 l

## Weight and ground pressure

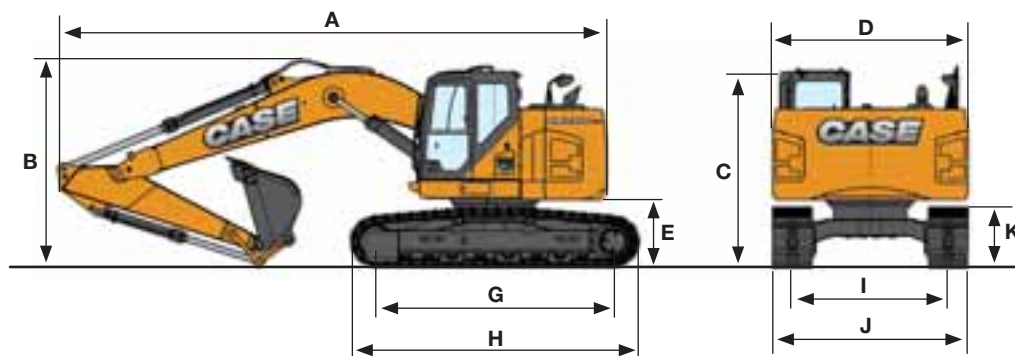
With 2.40 m Arm , 1.0 m<sup>3</sup> bucket, operator, lubricant, coolant, full fuel tank

| CX235C SR LC               | Weight (kg) | Ground pressure (MPa) |
|----------------------------|-------------|-----------------------|
| 600 mm rubber grouser shoe | 24500       | 0.051                 |
| 600 mm grouser shoe        | 24100       | 0.05                  |
| 700 mm grouser shoe        | 24600       | 0.044                 |
| 800 mm grouser shoe        | 24900       | 0.039                 |
| 900 mm grouser shoe        | 25200       | 0.035                 |

With 2.40 m Arm , 1.0 m<sup>3</sup> bucket, operator, lubricant, coolant, full fuel tank

| CX235C SR BLADE            | Weight (kg) | Ground pressure (MPa) |
|----------------------------|-------------|-----------------------|
| 600 mm rubber grouser shoe | 25500       | 0.057                 |
| 600 mm grouser shoe        | 25200       | 0.056                 |
| 700 mm grouser shoe        | 25500       | 0.049                 |
| 800 mm grouser shoe        | 25800       | 0.043                 |

## General dimensions



### CX235C SR LC

Arm 2.40 m HD

Arm 2.94 m

|  |         |         |
|--|---------|---------|
| Overall length (without attachment)                      | 4470 mm | 4470 mm |
| <b>A</b> Overall length (with attachment)                | 8920 mm | 8830 mm |
| <b>B</b> Overall height (with attachment)                | 3180 mm | 3090 mm |
| <b>C</b> Cab height                                      | 3140 mm | 3140 mm |
| <b>D</b> Upper structure overall width                   | 2990 mm | 2990 mm |
| Swing (rear end) radius                                  | 1720 mm | 1720 mm |
| <b>E</b> Clearance height under upper structure          | 1020 mm | 1020 mm |
| <b>F</b> Minimum ground clearance                        | 440 mm  | 440 mm  |
| <b>G</b> Wheel base (Center to center of wheels)         | 3660 mm | 3660 mm |
| <b>H</b> Crawler overall length                          | 4470 mm | 4470 mm |
| <b>I</b> Track gauge                                     | 2390 mm | 2390 mm |
| <b>J</b> Undercarriage overall width (with 600 mm shoes) | 2990 mm | 2990 mm |
| <b>K</b> Crawler tracks height                           | 920 mm  | 920 mm  |

### CX235C SR BLADE

Arm 2.40 m HD

Arm 2.94 m

|  |         |         |
|--|---------|---------|
| Overall length (without attachment)                      | 4700 mm | 4700 mm |
| <b>A</b> Overall length (with attachment)                | 9300 mm | 9210 mm |
| <b>B</b> Overall height (with attachment)                | 3180 mm | 3090 mm |
| <b>C</b> Cab height                                      | 3000 mm | 3000 mm |
| <b>D</b> Upper structure overall width                   | 2990 mm | 2990 mm |
| Swing (rear end) radius                                  | 1720 mm | 1720 mm |
| <b>E</b> Clearance height under upper structure          | 1020 mm | 1020 mm |
| <b>F</b> Minimum ground clearance                        | 440 mm  | 440 mm  |
| <b>G</b> Wheel base (Center to center of wheels)         | 3370 mm | 3370 mm |
| <b>H</b> Crawler overall length                          | 4180 mm | 4180 mm |
| <b>I</b> Track gauge                                     | 2200 mm | 2200 mm |
| <b>J</b> Undercarriage overall width (with 600 mm shoes) | 2800 mm | 2800 mm |
| <b>K</b> Crawler tracks height                           | 920 mm  | 920 mm  |

## Blade dimensions and range

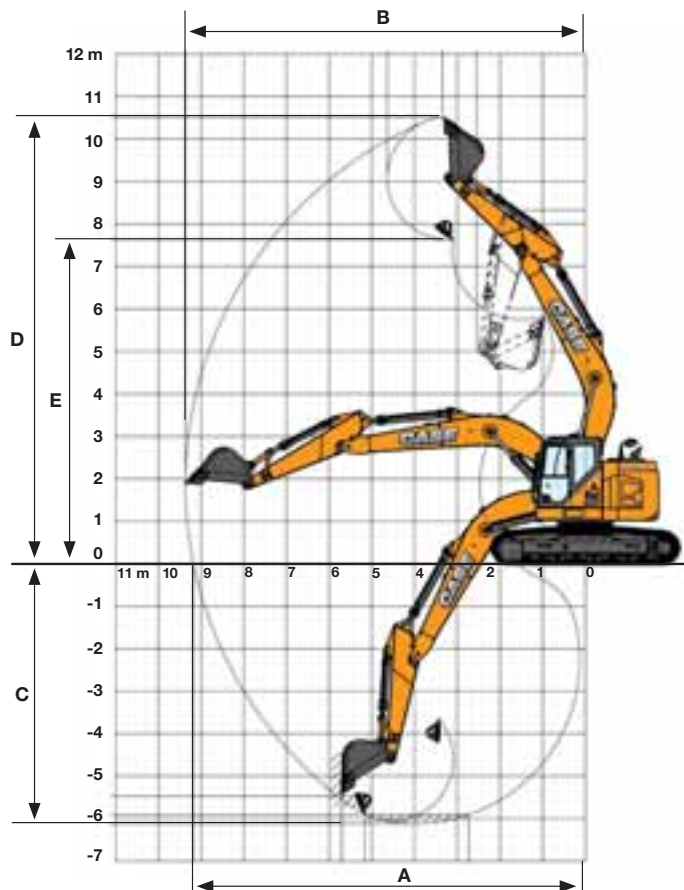
### CX235C SR BLADE

|                                   |                    |
|-----------------------------------|--------------------|
| Blade dimensions (width x height) | 2800/3000 x 610 mm |
| Blade range (up/down)             | 490 x 390 mm       |

# CX C-SERIES HYDRAULIC EXCAVATORS

## CX235C SR

### Performance data



#### CX235C SR LC/CX235C SR BLADE

#### Arm 2.40 m HD

#### Arm 2.94 m

|          |                             |          |          |
|----------|-----------------------------|----------|----------|
|          | <b>Boom length</b>          | 5700 mm  | 5700 mm  |
|          | <b>Bucket radius</b>        | 1450 mm  | 1450 mm  |
|          | <b>Bucket wrist action</b>  | 177°     | 177°     |
| <b>A</b> | <b>Maximum reach at GRP</b> | 9180 mm  | 9670 mm  |
| <b>B</b> | <b>Maximum reach</b>        | 9370 mm  | 9850 mm  |
| <b>C</b> | <b>Max. digging depth</b>   | 6120 mm  | 6650 mm  |
| <b>D</b> | <b>Max. digging height</b>  | 10520 mm | 10860 mm |
| <b>E</b> | <b>Max. dumping height</b>  | 7630 mm  | 7970 mm  |

### Digging force

With 1.0 m<sup>3</sup> bucket (ISO 6015)

#### CX235C SR LC/CX235C SR BLADE

#### Arm 2.40 m

#### Arm 2.94 m

|  |                             |        |        |
|--|-----------------------------|--------|--------|
|  | <b>Arm digging force</b>    | 123 kN | 103 kN |
|  | <b>- with auto power up</b> | 132 kN | 110 kN |
|  | <b>Bucket digging force</b> | 142 kN | 142 kN |
|  | <b>- with auto power up</b> | 152 kN | 152 kN |

# Lifting capacity

| Front<br>360° | REACH |       |       |       |       |       |              |  |   |  |  |  |
|---------------|-------|-------|-------|-------|-------|-------|--------------|--|---|--|--|--|
|               | 1.5 m | 3.0 m | 4.5 m | 6.0 m | 7.5 m | 9.0 m | At max reach |  | m |  |  |  |

## CX235C BLADE. Version Short arm. 2.40 m HD arm length, 1.00 m<sup>3</sup> bucket, 600G shoes, max reach 9.03 m - Blade down

|        |        |        |        |        |        |       |       |       |       |      |       |      |       |       |      |
|--------|--------|--------|--------|--------|--------|-------|-------|-------|-------|------|-------|------|-------|-------|------|
| 9.0 m  |        |        |        |        | 3510*  | 3510* |       |       |       |      |       |      | 3730* | 3730* | 5.32 |
| 7.5 m  |        |        |        |        | 3660*  | 3660* | 4380* | 4380* |       |      |       |      | 3250* | 3250* | 7.08 |
| 6.0 m  |        |        |        |        | 5130*  | 5130* | 4910* | 4860  | 4430* | 3350 |       |      | 3090* | 2860  | 8.12 |
| 4.5 m  |        |        | 8360*  | 8360*  | 6610*  | 6610* | 5450* | 4780  | 4910* | 3260 |       |      | 3070* | 2440  | 8.72 |
| 3.0 m  |        |        | 10110* | 10110* | 8490*  | 7130  | 6380* | 4520  | 5280* | 3130 | 3170* | 2240 | 3160* | 2240  | 9    |
| 1.5 m  |        |        |        |        | 9890*  | 6600  | 7170* | 4270  | 5700* | 2990 |       |      | 3360* | 2190  | 9    |
| 0 m    |        |        | 7670*  | 7670*  | 10490* | 6300  | 7580* | 4090  | 5890* | 2900 |       |      | 3710* | 2280  | 8.72 |
| -1.5 m | 8000*  | 8000*  | 11280* | 11280* | 10350* | 6280  | 7550* | 4040  | 5780* | 2880 |       |      | 4330* | 2540  | 8.16 |
| -3.0 m | 11260* | 11260* | 13740* | 12600  | 9610*  | 6390  | 7030* | 4130  |       |      |       |      | 5060* | 3090  | 7.25 |
| -4.5 m |        |        | 10860* | 10860* | 7710*  | 6590  |       |       |       |      |       |      | 4990* | 4390  | 5.87 |

## CX235C BLADE. Version Short arm. 2.40 m HD arm length, 1.00 m<sup>3</sup> bucket, 600G shoes, max reach 9.03 m - Blade up

|        |        |        |        |        |       |       |       |       |       |      |       |      |       |       |      |
|--------|--------|--------|--------|--------|-------|-------|-------|-------|-------|------|-------|------|-------|-------|------|
| 9.0 m  |        |        |        |        | 3510* | 3510* |       |       |       |      |       |      | 3730* | 3730* | 5.32 |
| 7.5 m  |        |        |        |        | 3660* | 3660* | 4380* | 4380* |       |      |       |      | 3250* | 3250* | 7.08 |
| 6.0 m  |        |        |        |        | 5130* | 5130* | 4910* | 4690  | 4430* | 3190 |       |      | 3090* | 2720  | 8.12 |
| 4.5 m  |        |        | 8360*  | 8360*  | 6610* | 6610* | 5450* | 4560  | 4740* | 3100 |       |      | 3070* | 2310  | 8.72 |
| 3.0 m  |        |        | 10110* | 10110* | 8490* | 6780  | 6380* | 4300  | 4630  | 2970 | 3170* | 2120 | 3160* | 2120  | 9    |
| 1.5 m  |        |        |        |        | 9890* | 6260  | 6420  | 4060  | 4490  | 2840 |       |      | 3330  | 2070  | 9    |
| 0 m    |        |        | 7670*  | 7670*  | 9910  | 5960  | 6220  | 3880  | 4380  | 2470 |       |      | 3470  | 2150  | 8.72 |
| -1.5 m | 8000*  | 8000*  | 11280* | 11200  | 9870  | 5940  | 6150  | 3830  | 4370  | 2730 |       |      | 3850  | 2400  | 8.16 |
| -3.0 m | 11260* | 11260* | 13740* | 11930  | 9610* | 6050  | 6240  | 3920  |       |      |       |      | 4660  | 2930  | 7.25 |
| -4.5 m |        |        | 10860* | 10860* | 7710* | 6280  |       |       |       |      |       |      | 4990* | 4170  | 5.87 |

## CX235C LC. Version Short arm. 2.40 m HD arm length, 1.00 m<sup>3</sup> bucket, 600G shoes, max reach 9.03 m

|        |        |        |        |        |        |       |       |       |       |      |       |      |       |       |      |
|--------|--------|--------|--------|--------|--------|-------|-------|-------|-------|------|-------|------|-------|-------|------|
| 9.0 m  |        |        |        |        | 3510*  | 3510* |       |       |       |      |       |      | 3730* | 3730* | 5.32 |
| 7.5 m  |        |        |        |        | 3660*  | 3660* | 4380* | 4380* |       |      |       |      | 3250* | 3250* | 7.08 |
| 6.0 m  |        |        |        |        | 5130*  | 5130* | 4910* | 4880* | 4430* | 3360 |       |      | 3090* | 2860  | 8.12 |
| 4.5 m  |        |        | 8360*  | 8360*  | 6610*  | 6610* | 5450* | 4810  | 4910* | 3270 |       |      | 3070* | 2440  | 8.72 |
| 3.0 m  |        |        | 10110* | 10110* | 8490*  | 7200  | 6380* | 4540  | 5100  | 3130 | 3170* | 2240 | 3160* | 2240  | 9    |
| 1.5 m  |        |        |        |        | 9890*  | 6660  | 7070  | 4290  | 4950  | 3000 |       |      | 3360* | 2190  | 9    |
| 0 m    |        |        | 7670*  | 7670*  | 10490* | 6360  | 6910  | 4140  | 4840  | 2900 |       |      | 3710* | 2280  | 8.72 |
| -1.5 m | 8000*  | 8000*  | 11280* | 11280* | 10350* | 6340  | 6840  | 4050  | 4830  | 2890 |       |      | 4250  | 2540  | 8.16 |
| -3.0 m | 11260* | 11260* | 13740* | 12850  | 9610*  | 6450  | 6860  | 4140  |       |      |       |      | 5060* | 3100  | 7.25 |
| -4.5 m |        |        | 10860* | 10860* | 7710*  | 6650  |       |       |       |      |       |      | 4990* | 4410  | 5.87 |

\* Hydraulic capacity 87%

# CX C-SERIES HYDRAULIC EXCAVATORS

## CX235C SR

### Lifting capacity

| Front<br>360° | REACH |       |       |       |       |       |                   |
|---------------|-------|-------|-------|-------|-------|-------|-------------------|
|               | 1.5 m | 3.0 m | 4.5 m | 6.0 m | 7.5 m | 9.0 m | At max reach<br>m |

#### CX235C BLADE. Version Standard arm. 2.94 m arm length, 0.90 m<sup>3</sup> bucket, 600G shoes, max reach 9.51 m - Blade down

|        |         |        |         |         |        |        |        |        |        |      |       |       |       |       |      |
|--------|---------|--------|---------|---------|--------|--------|--------|--------|--------|------|-------|-------|-------|-------|------|
| 9.0 m  |         |        |         |         |        | 2930 * | 2930 * |        |        |      |       | 2490* | 2490* | 6.17  |      |
| 7.5 m  |         |        |         |         |        | 3980 * | 3980 * | 2850 * | 2850*  |      |       | 2190* | 2190* | 7.71  |      |
| 6.0 m  |         |        |         |         |        | 4430 * | 4430 * | 4020 * | 3460   |      |       | 2090* | 2090* | 8.66  |      |
| 4.5 m  |         |        | 4990 *  | 4990 *  | 5680*  | 5680*  | 5000 * | 4880 * | 4610 * | 3360 | 2980* | 2380  | 2080* | 2080* | 9.22 |
| 3.0 m  |         |        | 10960 * | 10960 * | 7890*  | 7300   | 6050 * | 4640   | 5050 * | 3210 | 4000  | 2310  | 2150* | 2080  | 9.49 |
| 1.5 m  |         |        | 8870 *  | 8870 *  | 9600*  | 6790   | 6940 * | 4370   | 5570 * | 3060 | 4430* | 2240  | 2290* | 2040  | 9.48 |
| 0 m    |         |        | 8500 *  | 8500 *  | 10440* | 6410   | 7520 * | 4160   | 5880 * | 2940 | 3850* | 2190  | 2530* | 2100  | 9.22 |
| -1.5 m | 7310 *  | 7310*  | 10920 * | 10920 * | 10470* | 6290   | 7610 * | 4060   | 5880 * | 2890 |       |       | 2950* | 2310  | 8.69 |
| -3.0 m | 9960 *  | 9960*  | 14670 * | 12570   | 10020* | 6360   | 7330 * | 4100   | 5440 * | 2960 |       |       | 3720* | 2740  | 7.85 |
| -4.5 m | 14280 * | 14280* | 12330 * | 12330 * | 8610*  | 6570   | 6120 * | 4330   |        |      |       |       | 4940* | 3660  | 6.58 |

#### CX235C BLADE. Version Standard arm. 2.94 m arm length, 0.90 m<sup>3</sup> bucket, 600G shoes, max reach 9.51 m - Blade up

|        |         |        |         |         |       |        |        |        |        |      |       |       |       |       |      |
|--------|---------|--------|---------|---------|-------|--------|--------|--------|--------|------|-------|-------|-------|-------|------|
| 9.0 m  |         |        |         |         |       | 2930 * | 2930 * |        |        |      |       | 2490* | 2490* | 6.17  |      |
| 7.5 m  |         |        |         |         |       | 3980 * | 3980 * | 2850 * | 2850*  |      |       | 2190* | 2190* | 7.71  |      |
| 6.0 m  |         |        |         |         |       | 4430 * | 4430 * | 4020 * | 3300   |      |       | 2090* | 2090* | 8.66  |      |
| 4.5 m  |         |        | 4990 *  | 4990 *  | 5680* | 5680*  | 5000 * | 4700   | 4610 * | 3200 | 2980* | 2260  | 2080* | 2080* | 9.22 |
| 3.0 m  |         |        | 10960 * | 10960 * | 7890* | 7000   | 6050 * | 4420   | 4720   | 3050 | 3460  | 2190  | 2150* | 1970  | 9.49 |
| 1.5 m  |         |        | 8870 *  | 8870 *  | 9600* | 6440   | 6530   | 4160   | 4560   | 2910 | 3380  | 2120  | 2290* | 1920  | 9.48 |
| 0 m    |         |        | 8500 *  | 8500 *  | 10030 | 6070   | 6290   | 3950   | 4430   | 2790 | 3320  | 2070  | 2530* | 1990  | 9.22 |
| -1.5 m | 7310 *  | 7310*  | 10920 * | 10920 * | 9890  | 5950   | 6180   | 3850   | 4380   | 2740 |       |       | 2950* | 2180  | 8.69 |
| -3.0 m | 9960 *  | 9960*  | 14670 * | 11800 * | 9880  | 6020   | 6210   | 3890   | 4450   | 2810 |       |       | 3720* | 2590  | 7.85 |
| -4.5 m | 14280 * | 14280* | 12330 * | 11890   | 8610* | 6230   | 6120 * | 4120   |        |      |       |       | 4940* | 3470  | 6.58 |

#### CX235C LC. Version Standard arm. 2.94 m arm length, 0.90 m<sup>3</sup> bucket, 600G shoes, max reach 9.51 m

|        |         |        |         |         |        |        |        |        |        |      |       |       |       |       |      |
|--------|---------|--------|---------|---------|--------|--------|--------|--------|--------|------|-------|-------|-------|-------|------|
| 9.0 m  |         |        |         |         |        | 2930 * | 2930 * |        |        |      |       | 2490* | 2490* | 6.17  |      |
| 7.5 m  |         |        |         |         |        | 3980 * | 3980 * | 2850 * | 2850*  |      |       | 2190* | 2190* | 7.71  |      |
| 6.0 m  |         |        |         |         |        | 4430 * | 4430 * | 4020 * | 3470   |      |       | 2090* | 2090* | 8.66  |      |
| 4.5 m  |         |        | 4990 *  | 4990 *  | 5680*  | 5680*  | 5000 * | 4900   | 4610 * | 3360 | 2980* | 2380  | 2080* | 2080* | 9.22 |
| 3.0 m  |         |        | 10960 * | 10960 * | 7890*  | 7360   | 6050 * | 4660   | 5050 * | 3220 | 3800  | 2310  | 2150* | 2080  | 9.49 |
| 1.5 m  |         |        | 8870 *  | 8870 *  | 9600*  | 6850   | 6940 * | 4390   | 5020   | 3070 | 3720  | 2240  | 2290* | 2030  | 9.48 |
| 0 m    |         |        | 8500 *  | 8500 *  | 10440* | 6470   | 6990   | 4180   | 4890   | 2950 | 3670  | 2190  | 2530* | 2100  | 9.22 |
| -1.5 m | 7310 *  | 7310*  | 10920 * | 10920 * | 10470* | 6350   | 6870   | 4080   | 4840   | 2900 |       |       | 2950* | 2310  | 8.69 |
| -3.0 m | 9960 *  | 9960*  | 14670 * | 12860   | 10020* | 6420   | 690    | 4120   | 4910 * | 2970 |       |       | 3720* | 2740  | 7.85 |
| -4.5 m | 14280 * | 14280* | 12330 * | 12330 * | 8610*  | 6630   | 6120 * | 4350   |        |      |       |       | 4940* | 3670  | 6.58 |

\* Hydraulic capacity 87%

# Standard Equipment

## ENGINE

Isuzu 4-cylinder turbodiesel in line Certified Tier 4 interim (CEGR)  
 Electronic fuel injection  
 High pressure common rail system  
 Variable geometry turbo charger  
 Cooled Exhaust Gas Recirculation (CEGR)  
 Diesel Particulate Diffuser (DPD)  
 Neutral safety start  
 Auto-engine warm up, emergency stop  
 Glow-plug pre-heat  
 Idle System:  
 Auto-idle  
 One-touch idle  
 Idle shut-down  
 EPF (Engine Protection Feature)  
 Dual-stage fuel filtration  
 Dual element air filter  
 Remote oil filter  
 Green plug oil drain  
 500-hour engine oil change interval  
 Refuelling Pump  
 ONLY FOR CX235C SR  
 (Diesel Oxidation Catalyst DOC + Diesel Particulate Filter DPF)

## HYDRAULICS

Auto power boost  
 Auto swing priority  
 Auto travel speed change  
 Selectable work modes  
 Overload warning device

SWC - SWING RELIEF CONTROL  
 SSC - SPOOL STROKE CONTROL  
 BEC - BOOM ECONOMY CONTROL  
 AEC - AUTO ECONOMY CONTROL  
 SEC - SWING ECONOMY CONTROL  
 ISO pattern controls  
 Pre-set auxiliary pump settings  
 Switch controlled auxiliary selection  
 Auxiliary valve  
 Auxiliary pipe brackets  
 5,000 hour hydraulic oil change interval  
 1,000 hour hydraulic filter change interval  
 Hydraulic track adjustment  
 SAHR brake  
 ONLY FOR CX235C SR  
 10 x auxiliary flow settings in memory

## UPPERSTRUCTURE

Common key vandal locks  
 Swivel guard belly pan  
 Rear view safety camera  
 ONLY FOR CX145C SR  
 Isolation mounted cab (fluid and spring)  
 ONLY FOR CX235C SR

4-point isolation mounted cab (fluid and spring)

## ATTACHMENT

Bucket linkage with hook  
 Boom mounted work light (70

watt)  
 Auxiliary pipe brackets  
 Centralized lube bank  
 Attachment cushion valve  
 Arm and boom regeneration  
 ONLY FOR CX145C SR  
 Standard boom 4.63 m  
 Arm 2.50 m  
 Arm and boom hose burst check valves  
 ONLY FOR CX235C SR  
 Standard boom 5.70 m  
 Arm 2.40 m HD  
 EMS bushings  
 Safety valves on boom and arm cylinders with overload warning device

## OPERATOR STATION

ROPS/FOPS level 2 cab  
 Pressurized cab  
 Tempered safety glass  
 One-touch lock front window  
 Sun visor & rain deflector  
 AC/heat/defrost w/ auto climate control  
 Cup holder & ashtray  
 Interior dome light  
 Cloth covered air-suspension seat  
 Seat-belt  
 Adjustable armrests  
 Low-effort controls (short)  
 Radio mute switch on control lever  
 Controls pre-wired for auxiliary  
 Auxiliary select system

Straight travel  
 Aux-in port for personal electronics  
 Multifunction color monitor  
 Rear-view camera  
 Anti-theft system (start code system)  
 Rubber floor mat  
 12-volt electric socket  
 24-volt cigarette lighter  
 One-piece right hand window  
 2 internal & 3 external view mirrors  
 2 working lights (boom & upperstructure)  
 2 cab top working lights  
 Windshield wiper / washer  
 Clear (Lexan) roof window w/ sunshade  
 Storage compartments  
 On-board diagnostic system  
 ONLY FOR CX145C SR  
 Travel alarm with cancel switch  
 ONLY FOR CX235C SR  
 Interior dome light (10 W)  
 Sliding cockpit (100 mm)  
 Beacon harness  
**UNDERCARRIAGE**  
 600 mm steel shoes, triple semigrouser  
 strutted and sealed link  
 Full overlap turntable bearing tub  
 Single track guide

# Options

## HYDRAULICS

Auxiliary Hydraulics -  
 Single acting pedal activated breaker circuit  
 Proportional control  
 multifunction circuit w pressure control, proportional control  
 Low-flow circuit, proportional control

## ATTACHMENT

Hydr. or mech quickcoupler  
 Buckets: Extreme / Heavy duty /

GP / ditching  
 Hammers, shears, grapples  
 ONLY FOR CX145C SR  
 Arm - 2.10 m / 3 m  
 ONLY FOR CX235C SR  
 Arm - 2.94 m  
**OPERATOR STATION**  
 Front cab guard - vertical bars (OPG level 2)  
 Front cab guard - vertical bars (OPG level 1)  
 Front mesh screen

AM/FM radio w/ antenna and 2-speakers  
 Side-view camera  
**UPPERSTRUCTURE**  
 Auto centralized greasing system  
 Rubber bumper guard (order through Service Parts)  
**UNDERCARRIAGE**  
 Steel shoes, triple semi-grouser  
 ONLY FOR CX235C SR  
 700 mm, 800 mm, 900 mm: (swamp)

600 mm Rubber link tracks  
 Triple track guide  
 ONLY FOR CX145C SR  
 500 mm, 600 mm, 700 mm  
 500mm Rubber link tracks  
 Double track guide

Standard and optional equipment shown can vary by country.

www.casece.com  
**EXPERTS FOR THE REAL WORLD**  
**SINCE 1842**

**CASE**  
CONSTRUCTION



Form No. 20056GB - Printed in Italy - MediaCross Firenze - 04/15

**CNH INDUSTRIAL  
DEUTSCHLAND GMBH**  
Case Baumaschinen  
Benzstr. 1-3 - D-74076 Heilbronn  
DEUTSCHLAND

**CNH INDUSTRIAL FRANCE, S.A.**  
16-18 Rue des Rochettes  
91150 Morigny-Champigny  
FRANCE

**CNH UK LTD**  
Unit 4, Hayfield Lane  
Business Park, Field Lane,  
Auckley, Doncaster, DN9 3FL  
UNITED KINGDOM

**CNH INDUSTRIAL - SOUTH AFRICA**  
Waterfall Business Park  
Bekker Street, Howick Close  
1685 Midrand - Johannesburg  
REPUBLIC OF SOUTH AFRICA

**CNH INDUSTRIAL  
MAQUINARIA SPAIN, S.A.**  
Avda. José Gárate, 11  
28823 Coslada (Madrid)  
ESPAÑA

**CNH INDUSTRIAL ITALIA SPA**  
Strada di Settimo, 323  
10099 San Mauro Torinese (TO)  
ITALIA

**CASE CUSTOMER CENTRE  
PARIS**  
RN 330 - Penchard  
77122 - Monthyon  
FRANCE

**CNH INDUSTRIAL - MIDDLE EAST**  
DAFZA - Dubai Airport Free Zone  
West Wing 4 B, Office 642  
P.O. Box 54588, Dubai,  
UNITED ARAB EMIRATES

**NOTE:** Standard and optional fittings can vary according to the demands and specific regulations of each country. The illustrations may include optional rather than standard fittings - consult your Case dealer. Furthermore, CNH Industrial reserves the right to modify machine specifications without incurring any obligation relating to such changes.

Conforms to directive 2006/42/EC

**CASE** Customer Assistance  
**00800-2273-7373**

The call is free from a land line.  
Check in advance with your Mobile Operator if you will be charged. Toll free number not available from all calling areas.

