

HYDRAULIC EXCAVATOR – BRZ

CASE

CONSTRUCTION

SINCE 1842.

CX370C MASS EXCAVATOR

ENGINE

Brand	ISUZU
Model	GH-6HK1XKSS
Type	4-stroke engine, water-cooled, 4 cylinder-in-line common rail injection system, turbocharged with air-cooled intercooler, with tier 3 emission certification
Rating Power	
Net (ISO 9249)	268,2 hp (200 kW) @ 2000 rpm
Gross (ISO 14396)	284,3 hp (212 kW) @ 2000 rpm
Piston displacement	7790 cc
Maximum torque	
Net (ISO 9249)	725.02 lbf.ft (983 Nm) @ 1500 rpm
Gross (ISO 14396)	752.31 lbf.ft (1020 Nm) @ 1500 rpm
Bore and stroke	4.5 x 4.9 in (115 x 125 mm)
Voltage	24 V
Alternator	50 A
Starter engine	24 V 5,0 kW

ELECTRICAL SYSTEM

Engine control	
1 - Quadrant type acceleration control	
2 - Touch idling / automatic deceleration / automatic idling shutdown system	
3 - Emergency shutdown	
Lights	
1 - Work lights	
Top	24V 70W x 1
Boom	24V 70W x 2
Cabin	24V 70W x 2
2 - Operator's	
Cabin compartment	24V 10W x 1
Battery	2 x 12 V 100 Ah/5HR
Safety	
1 - Travel alarm	
2 - Double horn	
Wire harness	Waterproof connectors

HYDRAULIC SYSTEM

Main pumps	2 axial piston pumps and variable flow with adjustment system		
1 - Max. flow	2 x 79.25 gpm (300 l/min) @ 2000 rpm		
2 - Work circuit pressure			
Boom/Arm/Bucket	4974 psi (34.3 MPa)	5410 psi (37.3 MPa) with AUTO power up	
Swing circuit	4410 psi (30.4 MPa)		
Travel circuit	4974 psi (34.3 MPa)		
Pilot pump	1 gear pump		
1 - Max flow	7.9 gpm (30 l/min)		
2 - Work circuit pressure	566 psi (3.9 MPa)		
Control valves	With boom and arm retention valve. One 4-spool valve for the acceleration of the arm, boom, bucket and movement of the right track. One 5-spool valve for the movement of the left track, auxiliary, oscillation, arm, and boom acceleration		
Swing device			
1 - Engine	Axial piston motor and fixed displacement		
2 - Brake	SAHR type		
3 - Final control	Planetary gear reduction		
4 - Turning table bearings	Internal ball bearing		
5 - Max. turning speed	10,0 rpm		
6 - Turn torque	82607 lbf.ft (112000 Nm)		
Cylinder	Qty	Diam.Bore	x Diam.Rod x Stroke
Boom	2	5.7 in (145 mm)	x 3.9 in (100 mm) x 4 ft 10 in (1495 mm)
Arm	1	6.7 in (170 mm)	x 4.7 in (120 mm) x 5 ft 7 in (1748 mm)
Bucket	1	5.9 in (150 mm)	x 4.1 in (105 mm) x 3 ft 11 in (1210 mm)
Filters			
Suction filter	105 µm		
Return filter	6 µm		
Pilot line filter	8 µm		

HYDRAULIC CONTROLS

Boom/arm/bucket/turn	Pilot pressure control system (ISO standard control)
Travel	Pilot pressure control system
Work mode selection	
1 - Mode SP	
2 - Mode H	
3 - Mode Auto	
Hydraulic block (door block, left side tilt console)	

MONITOR SYSTEM

1 - Message screen (Warning, Situation, etc.)
2 - Work mode (SP, H, Auto)
3 - Machine condition (Power boost, etc.)
4 - Alarm and buzzer screen
5 - Water temperature
6 - Hydraulic oil temperature
7 - Fuel level
8 - Diagnose System

OPERATOR'S ENVIRONMENT

Operator's cabin

- 1 - Round shaped cabin with a smooth design
- 2 - Safety glass on all windows
- 3 - Impactless suspension through 4 hydraulic dampers
- 4 - Sliding front window with automatic block
- 5 - Color LCD screen
- 6 - Membrane switch on the display screen
- 7 - Windscreen wipers and washer
- 8 - AM/FM radio with automatic tuner
- 9 - Floor carpet
- 10 - Ceiling hatch of polycarbonate and sun protection
- 11 - Automatic air conditioning
- 12 - FOPS defense level 1 (on the cabin's structure)
- 13 - Rollover protection structure (ROPS)
- 14 - Internal noise level 72 dBa (According to ISO 6396)

Operator's seat

- 1 - Manual weight adjustment
- 2 - Back angle adjustment
- 3 - Seat height adjustment, movable armrest attached to the consoles
- 4 - Adjustable headrest
- 5 - 3" self retracting seatbelt
- 6 - Adjustable back support
- 7 - The control consoles are adjusted independently from the seat

Other

- 1 - Back mirror (cabin side and right side)

UNDERCARRIAGE

Drive motor	Axial piston motor with variable displacement
Brake	SAHR type
Hydraulic service brake	Brake valve
Final control	Planetary gear reduction
Travel speeds	
High	3.3 mph (5,4 km/h) (Automatic speed change)
Low	2.1 mph (3,4 km/h)
Drawbar push	59124 lbf (263 kN)
Number of upper rollers	2 (on each side)
Number of lower rollers	8 (on each side)
Quantity of shoes	48 (on each side)
Type of shoes	Triple claw pad
Link pitch	8.5 in (216 mm)
Track width - STD	1' 11" (600 mm)
Gradeability	70% (35°)

OPERATING WEIGHT

Operating weight	85041 lb (38.574 kg)
	With HD 9' 7,8" (2.21 m) arm, 3.5 yd ³ (2.7 m ³) bucket, 1' 11" (600 mm) track shoes, operator, lubricant, coolant and full fuel tank
Shipping weight	78213 lb (35477 kg)
	Operating weight - [Operator's weight 170 lb (77 kg) + 90% of the fuel weight 1023 lb (464 kg) + Bucket weight 5635 lb (2556 kg)]
Counterweight	17857 lb (8100 kg)
Ground pressure	10.4 psi (0,72 kgf/cm ²)
	With HD 7' 3" (2.21 m) arm, 3.5 yd ³ (2.7 m ³) bucket, 1' 11" (600 mm) track shoes

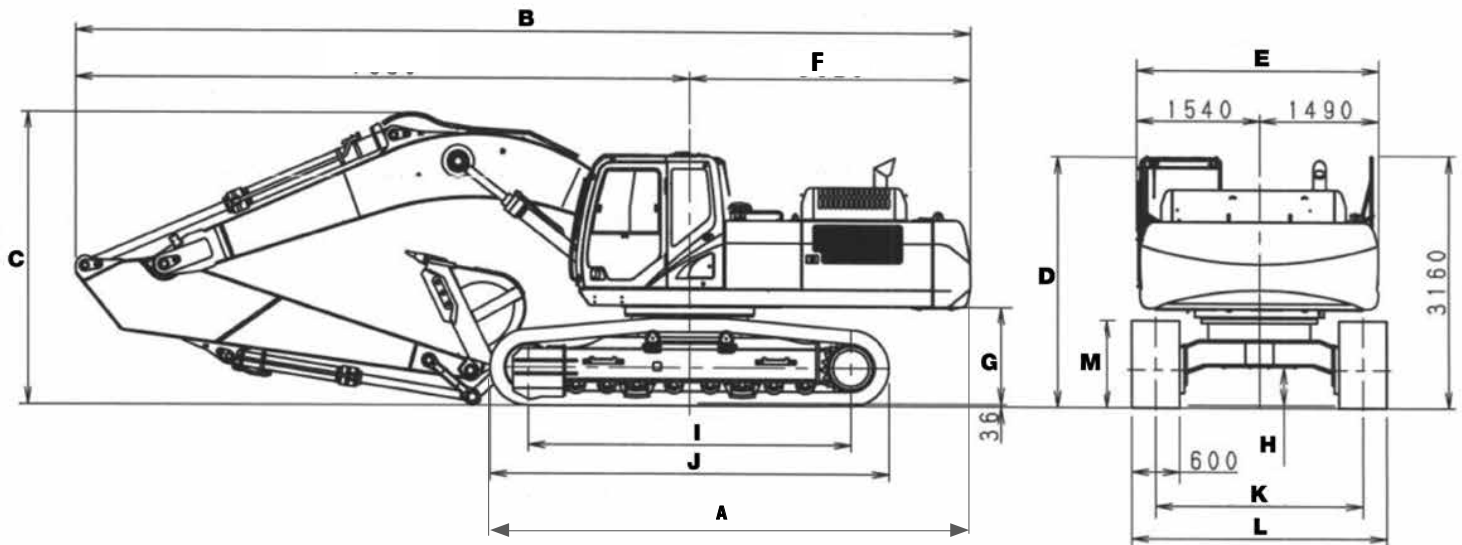
EXCAVATION FORCE WITH 3.5 yd³ (2.7 m³) BUCKET

ISO 6015	7 ft 3 in (2,21 m)
Arm digging	49008 (218 kN)
With AUTO power up	53212 lbf (237 kN)
Bucket digging force	59754 lbf (266 kN)
With AUTO power up	64879 lbf (289 kN)

COMPONENTS WEIGHT

Track shoes		
2' (600 mm)	10229 lb (4640 kg)	
2' 3,5" (700 mm)	11177 lb (5070 kg)	
2' 7,4" (800 mm)	12129 lb (5502 kg)	

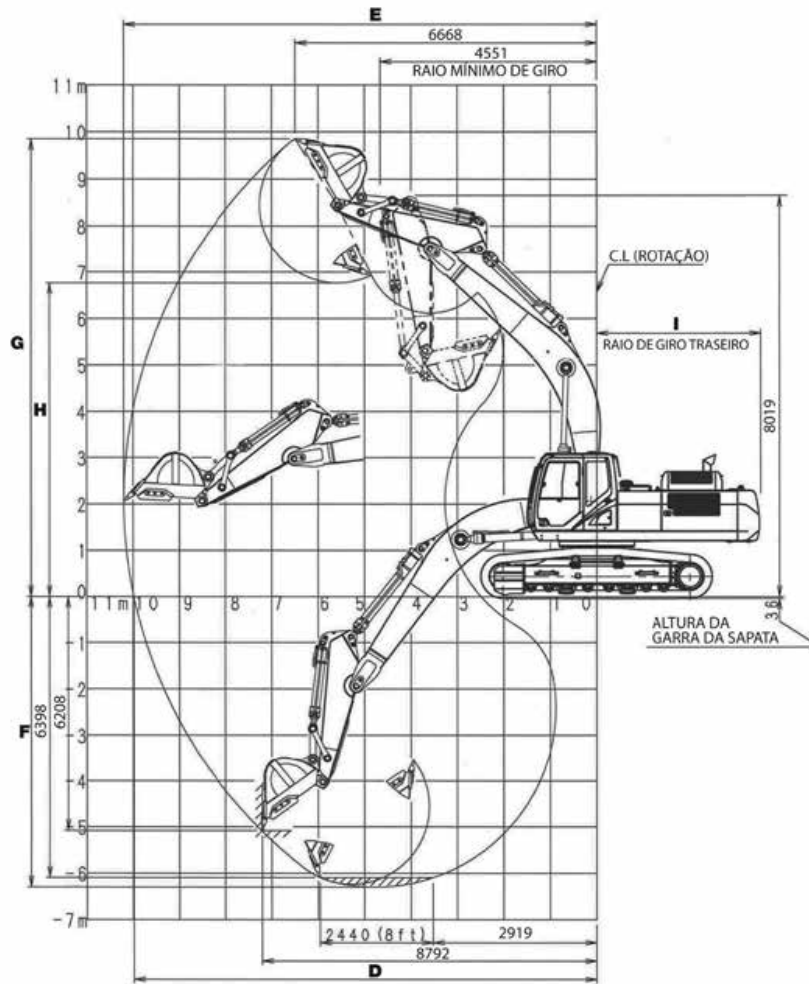
DIMENSIONS



**7 ft 3 in
(2,21 m)**

Arm HD	
A. Total length (without accessory)	19' 9,6" (6035 mm)
B. Total length (with accessory)	35' 7" (10842 mm)
C. Total height (with accessory)	13' 6" (4111 mm)
D. Cabin height	10' 9" (3265 mm)
E. Upper structure total width	9' 11" (3030 mm)
F. Back rotation radius	11' 7.7" (3550 mm)
G. Low space upper structure	3' 11" (1179 mm)
H. Minimum distance to ground	1' 6.8" (480 mm)
I. Distance between shafts (from center to center of the wheels)	13' 3.0" (4040 mm)
J. Full track length	16' 4.0" (4980 mm)
K. Track gauge	8' 6.3" (2600 mm)
L. Full crawler rail width - with 1' 11" (600 mm) shoes	10' 5.9" (3200 mm)
M. Track height	3' 6.9" (1090 mm)

PERFORMANCE INFORMATION



**7 ft 3 in
(2,21 m)**

Arm HD	
A. Boom length	19' 9" (6000 mm)
B. Bucket radius	5' 11" (1804 mm)
C. Bucket rotation	128 °
D. Max. ground level reach	32' (9771 mm)
E. Max. reach	32' 7" (9989 mm)
F. Max. excavation depth	21' (6398 mm)
G. Max. excavation height	31' (9445 mm)
H. Max. unload height	20' 8" (6284 mm)

SERVICE CAPACITIES AND SPECIFICATIONS

	Capacities	Specifications
Hydraulic system	92.46 gal (350 l)	ISO VG 46
Hydraulic deposit	46.23 (175 l)	ISO VG 46
Fuel tank	153.22 (580 l)	(Diesel)
Cooling system	8.69 (32,9 l)	Coolant 55% 45% water
Final control (on each side)	2.90 (11 l)	API GL-4 90
Swing reductor box	1.32 (5 l)	API GL-5 90
Engine housing (with remote oil filter)	10.83 (41 l)	API CD SAE 10W-30

Note:

- 1 - CASE Construction is constantly improving its products and therefore, it reserves the right to modify its design and specifications at any time.
- 2 - The graphics may include optional equipment and may not include all the standard equipment.
- 3 - These specifications are based on the ISO 7135 standard (Land machinery – hydraulic excavators – Terminology and commercial specifications) second edition date 12/15/2009

CX370C MASS EXCAVATOR – 7 ft 3 in (2,21 m) Arm

	0 m (0 ft)		1,5 m (4 ft 11 in)		3,0 m (9 ft 10 in)		4,5 m (14 ft 9 in)		6,0 m (19 ft 8 in)		7,5 m (24 ft 7 in)		9,0 m (25 ft 6 in)		MAXIMUM REACH		mm
	FRONT	SIDE	FRONT	SIDE	FRONT	SIDE	FRONT	SIDE	FRONT	SIDE	FRONT	SIDE	FRONTAL	SIDE	FRONT	SIDE	
9,0 m (25 ft 6 in)																	
7,5 m (24 ft 7 in)									*11002 kg (24256 lb)	*11002 kg (24256 lb)					*11062 kg (24388 lb)	10950 kg (24141 lb)	6080 mm (19' 11,2")
6,0 m (19 ft 8 in)									*10866 kg (23956 lb)	*10866 kg (23956 lb)					*10569 kg (23301 lb)	8355 kg (18420 lb)	7160 mm (23' 5,8")
4,5 m (14 ft 9 in)							*14861 kg (32763 lb)	*14861 kg (32763 lb)	*11847 kg (26119 lb)	10767 kg (23738 lb)	*10511 kg (23173 lb)	7670 kg (16910 lb)			10393 kg (22913 lb)	7172 kg (15812 lb)	7810 mm (25' 7,4")
3,0 m (9 ft 10 in)									*13160 kg (29013 lb)	10265 kg (22631 lb)	*10974 kg (24194 lb)	7466 kg (16460 lb)			10090 kg (22245 lb)	6613 kg (14580 lb)	8130 mm (26' 8")
1,5 m (4 ft 11 in)									*14205 kg (31317 lb)	9851 kg (21718 lb)	11217 kg (24730 lb)	7263 kg (16013 lb)			9898 kg (21822 lb)	6457 kg (14236 lb)	8170 mm (26' 9,6")
0 m (0 ft)							*19538 kg (43074 lb)	14477 kg (31917 lb)	*14545 kg (32067 lb)	9624 kg (21218 lb)	11089 kg (24448 lb)	7149 kg (15761 lb)			10279 kg (22662 lb)	6671 kg (14708 lb)	7920 mm (25' 11,7")
-1,5 m (4 ft 11 in)							*18292 kg (40327 lb)	14521 kg (32014 lb)	*13921 kg (30691 lb)	9596 kg (21156 lb)					*10656 kg (23493 lb)	7379 kg (16268 lb)	7360 mm (24' 1,6")
-3,0 m (9 ft 10 in)					*19854 kg (43771 lb)	*19854 kg (43771 lb)	*15647 kg (34496 lb)	14781 kg (32587 lb)	*11646 kg (25676 lb)	9809 kg (21626 lb)					*10287 kg (22679 lb)	9058 kg (19970 lb)	6400 mm (20' 11,8")
-4,5 m (14 ft 9 in)							*9646 kg (21266 lb)	9646 kg (21266 lb)							*8423 kg (18570 lb)	*8423 kg (18570 lb)	4810 mm (15' 9,3")

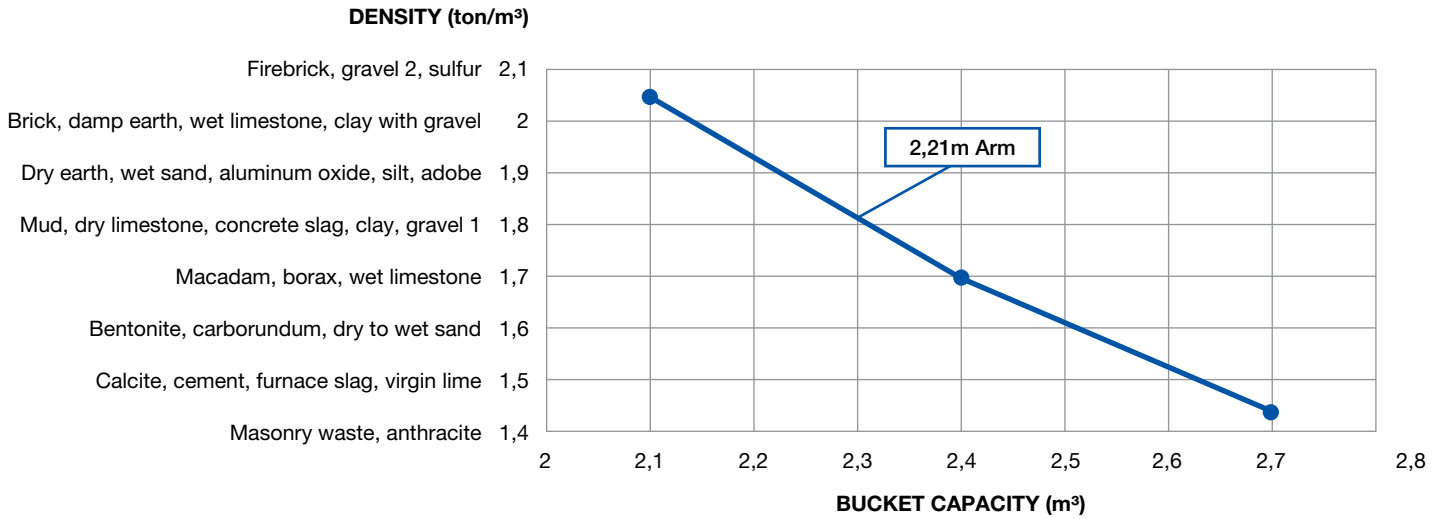
Work mode - The loads are adopted according to the standard SAE J1097 ISO 10567D DIN 150 19-2 - The load capacities in kg indicated do not exceed the 75% of the tipping load or 87% the hydraulic elevation capacity - capacities marked with an asterisk (*) are limited by the hydraulic capacity.

BUCKET INFORMATION

CX370C ME – ISO

BUCKET	CAPACITY yd ³ (m ³)	WIDTH ft/in (mm)	WEIGHT lb (kg)	TEETH NUMBER
SD	2.7 (2.1)	4' (1270)	4728 (2145)	4
SD	3.1 (2.4)	4' 3.2" (1470)	5224 (2370)	5
SD	3.5 (2.7)	5' 2" (1670)	5635 (2556)	5

Note: SD – Severe Duty



SERIES EQUIPMENT

Operator's Compartment

Pressurized cabin with round shape and smooth design
 Safety glass on all windows
 Impact-proof cabin suspension for 4 cushion hydraulic mounting
 Sliding front window with automatic block
 Full color LCD screen included
 Membrane switch on the display screen
 Windscreen wipers and washer
 AM/FM radio with automatic tuner
 floor carpet
 Ceiling hatch of polycarbonate and sun protection
 Automatic air conditioning
 Top FOPS defense level 1 (on the cabin's structure)
 Rollover protection structure (ROPS)
 Operator's seat with low frequency mechanical suspension with helical spring and double acting hydraulic damper, manual weight adjustment, back angle adjustment, adjustable armrest height attached to the consoles, adjustable headrest, self retracting seatbelt and adjustable back support.
 The control consoles are adjusted independently from the seat
 Rear view mirror
 Double horn
 Travel alarm
 Joystick levers to control hydraulic functions
 Safety levers to neutralize hydraulic functions and start of the engine

Engine

4-stroke engine, water-cooled, 6 cylinder - common rail injection system, turbocharged with air-cooled intercooler, with tier 3 emission certification.

Electric System

Wiring with waterproof connectors
 Battery 2x 12V 100 Ah/5HR
 Voltage 24V
 Alternator 50 A
 Starter engine 5,0 kW

Hydraulic System

With ISO standardized steering control
 Work mode selection Auto, H and SP
 Auxiliary accessory mode
 Auto power up
 Electronic flow control
 2 variable flow pumps
 Cylinders with end cushioning
 One gear pump for pilot system

Undercarriage

Travel speeds
 High 5,4 Automatic speed change
 Low 3,4 km/h
 Quantity of transport rollers: 2 (each side)
 Quantity of rollers on each track 8 (on each side)
 Number of shoes 48 (on each side)
 Pads width 1' 11" (600 mm)
 Type of shoes triple grousers
 Track width 8' 6" (2600 mm)
 Track length 16' 4" (4980 mm)
 Track guide Simple
 Sealed and lubricated chains



ISO Conformitie

ROPS	12117-2:2008
FOPS level 1	10262:1998
Seat belt	6683:2005
Operator's seat	11112:1995
Seat vibration	7096:2000
Operator's primary controls, functional information, symbols for operator controls and other displays	10968:2004 / 6011:2003 6405-1:2004 / 6405-2:1993 / 6682:1995
Machine-control systems	15998:2008
Visibility	5006:2006 14401-1:2004 / 14401-2:2004
Sound level	
Internal	6396:2008
External	6395:2008
Ground contact pressure	16754:2008
Digging force	6015:2006
Terminology and commercial specifications	7135:2009
Lift capacity	10567:2007

OPTIONAL EQUIPMENT

Cabin

Seat with air suspension
 2 options for front stone protection.
 Level 2 FOPS superior protection
 Rain deflector
 Sun screen

Accessories

Rubber fender protector
 Additional handrails Rh + Lh
 Safety valve for the boom

Other

Rear view camera
 Side view camera
 Refueling pump

Undercarriage

2' 3" (700 mm) and 2' 7" (800 mm) track shoes
 Triple track guide



Fleet monitoring and tracking management system through satellite or mobile phone

Case reserves the right to implement improvements in the project and alterations to the specifications at any time, without prior notice, and not being liable to install them in previously sold units. The specifications, descriptions and graphics correctly reflect the information known to this day in this publication. This information may vary in different regions and may be subject to changes without previous notice. The graphics may include equipment and optional accessories, and may not include all the standard units.

CCEI0037 – 10/2020 – Printed in Brazil

CaseCE.com



Factories

Contagem – Minas Gerais – Brazil
 Av. General David Sarnoff, 2.237
 Inconfidentes – C.P. 32210-900
 Tel.: +55 31 2104-3392

Sorocaba – São Paulo – Brazil
 Av. Jerome Case, 1.801
 Éden – C.P. 18087-220
 Tel.: +55 15 3334-1700