

## ENGINE

Model	Case powered by FPT F4GEO684B*D600
Type	Diesel, direct injection, 4-cycles, turbocharged, intercooler, Tier 3 certification
Fuel Injection	Mechanical
Net horsepower (SAE J1349)	145 hp (108 kW) @ 2000 rpm
Cylinders	6-cylinder in line
Bore x stroke	4.09 x 5.19in (104 x 132 mm <sup>3</sup> )
Cylinder displacement	4 in <sup>3</sup> (6.7L)
Net maximum torque @ 1200 rpm	670 Nm

## BOOM/ARM

### Standard boom

Length	5650 mm
Boom with arm cylinder & lines	1950 kg
Lift cylinders (2)	352 kg
Total weight	2302 kg

### 2.4 m arm

Weight of arm only	674 kg
Bucket cylinder lines and linkage	343 kg
Total arm weight	1017 kg

### 2.94 m arm

Weight of arm only	716 kg
Bucket cylinder lines and linkage	343 kg
Total arm weight	1059 kg

### 3.5 m arm

Weight of arm only	915 kg
Bucket cylinder lines and linkage	343 kg
Total arm weight	1258 kg

## HYDRAULIC SYSTEM

Pumps	Two axial piston with variable displacement and regulation system	
Maximum		
Capacity	2x220 L/min (2x58,1 gpm)	
System relief pressure		
Standard	34.3 MPa	
Power Boost	37.8 MPa	
Control valves		
	4-spool section to drive right-hand track, boom, bucket, and arm acceleration	
	5-spool section to drive left-hand track, auxiliary system, swing, and boom and arm acceleration	
	Boom and arm anti-drift valves	
Pilot Pump		
Pump (1)	Gear design	
Maximum flow	20 L/min	
Relief pressure	5 MPa	
Swing system		
Motor (1)	Fixed-displacement axial piston design	
Speed	12.9 rpm	
Brake	Spring-applied, hydraulically-released with dual damping system	
Drive system		
Motor (2)	Axial piston, 2-speed	
Final command	Planetary reduction gear	
Drawbar power	210 kN	
Drive speeds		
Automatic kick down	Forward/Reverse	
Low	3.6 km/h	
High	6.0 km/h	
Drive control valve	Two-stage counterbalance and relief design	

## HYDRAULIC CYLINDERS

Boom cylinders	(2)
Cylinder bore	120 mm
Cylinder rod diameter	85 mm
Cylinder stroke	1345 mm
Arm cylinders	(1)
Cylinder bore	135 mm
Cylinder rod diameter	95 mm
Cylinder stroke	1558 mm
Bucket cylinders	(1)
Cylinder bore	120 mm
Cylinder rod diameter	80 mm
Cylinder stroke	1080 mm

## ELECTRICAL SYSTEM

Voltage	24 V
Batteries (connected in series, maintenance-free)	2 x 12 V
Capacity (each battery)	100 Ah
Starter motor	3.7 kW
Alternator	90 A

## SERVICE CAPACITIES

Engine oil	21 L
Cooling system	24 L
Fuel tank	390 L
Hydraulic tank	167 L
Hydraulic system including hydraulic tank	218 L
Final drive (each side)	3.5 L
Swing drive	3.0 L

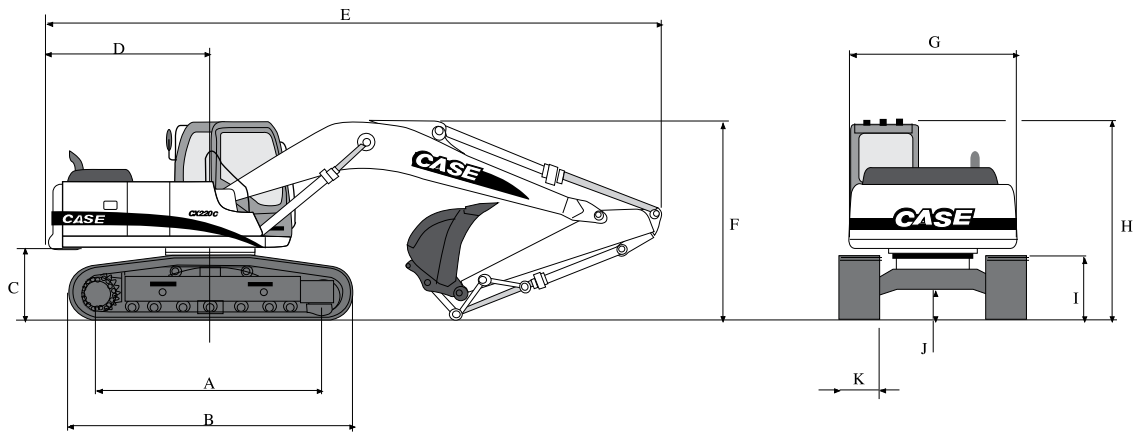
## OPERATING WEIGHT

With 2.4 m arm, 600 mm Crawler shoes, 1.3m<sup>3</sup> bucket, operator weighing 75 kg, full fuel tank, and standard equipment 22,556 kg

## TRACK

Triple grouser shoe	
Lower rollers (each side)	8
Upper rollers (each side)	2
Track length	4451 mm
Axle track	2393 mm
Shoes	600 - 700 - 800 - 900 mm

## DIMENSIONS



	2400 mm arm	2940 mm arm	3500 mm arm
<b>A</b> Center to center (guide wheel to drive wheel)	3656 mm	3656 mm	3656 mm
<b>B</b> Track overall length	4451 mm	4451 mm	4451 mm
<b>C</b> Upperstructure ground clearance	1076 mm	1076 mm	1076 mm
<b>D</b> Rear tail swing radius	2800 mm	2800 mm	2800 mm
<b>E</b> Overall length with attachment	9580 mm	9493 mm	9568 mm
<b>F</b> Overall height with attachment	3044 mm	2884 mm	3044 mm
<b>G</b> Chassis width of upperstructure	2490 mm	2490 mm	2490 mm
<b>H</b> Cab height	3038 mm	3038 mm	3038 mm
<b>I</b> Shoe height	952 mm	952 mm	952 mm
<b>J</b> Minimum ground clearance	492 mm	492 mm	492 mm
<b>K</b> Track shoe width	600 mm	600 mm	600 mm

The drawings are for illustrative purposes only and may not accurately represent the machine.

### 2400 MM ARM

Shoes	Total track width	Operating weight
600	2993 mm	22,556 kg
700	3093 mm	22,698 kg
800	3193 mm	22,986 kg
900	3293 mm	23,254 kg

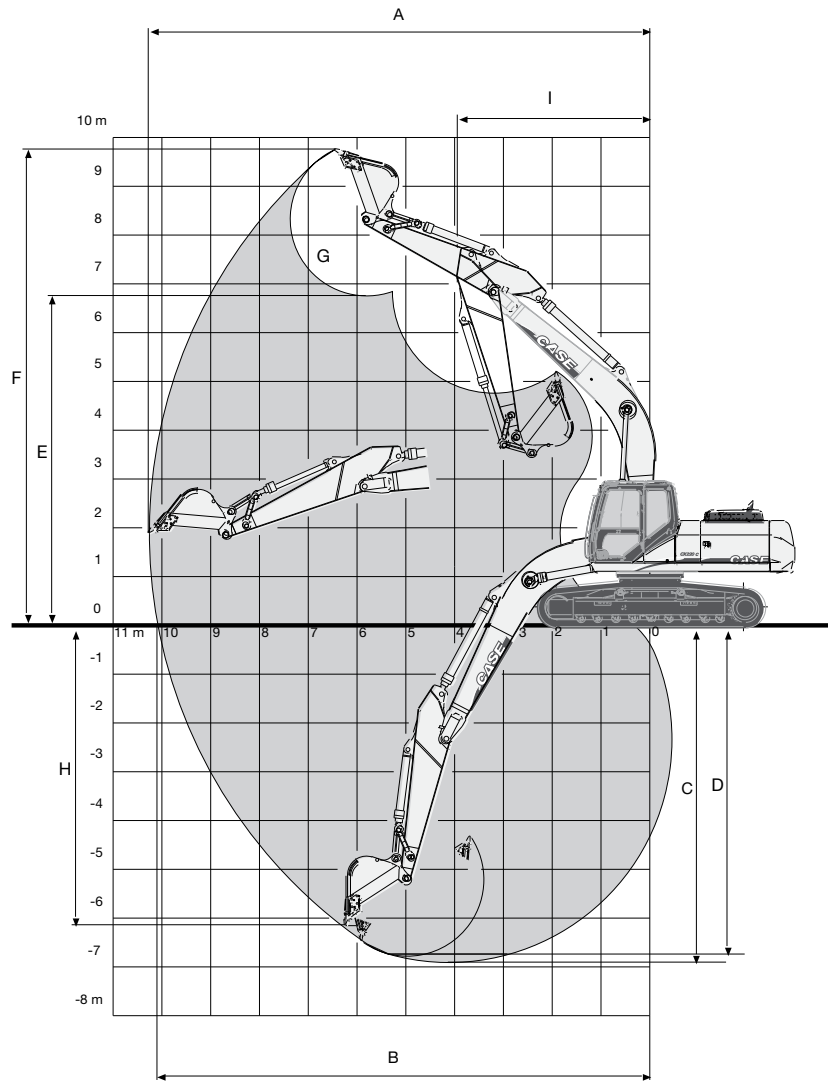
### 2940 MM ARM

Shoes	Total track width	Operating weight
600	2993 mm	22,581 kg
700	3093 mm	22,723 kg
800	3193 mm	23,011 kg
900	3293 mm	23,279 kg

### 3500 MM ARM

Shoes	Total track width	Operating weight
600	2993 mm	22,645 kg
700	3093 mm	22,787 kg
800	3193 mm	23,075 kg
900	3293 mm	23,343 kg

## PERFORMANCE SPECS



	2400 mm arm	2940 mm arm	3500 mm arm
<b>A</b> Maximum dig radius	9446 mm	9928 mm	10,366 mm
<b>B</b> Maximum dig radius at groundline	9254 mm	9747 mm	10,192 mm
<b>C</b> Maximum dig depth	6052 mm	6592 mm	7152 mm
<b>D</b> Dig depth – level bottom of 2.44 m (8'0")	5954 mm	6520 mm	7082 mm
<b>E</b> Dump height	6706 mm	6936 mm	6999 mm
<b>F</b> Maximum reach height	9567 mm	9784 mm	9806 mm
<b>G</b> Bucket rotation*	1432 mm	1432 mm	1432 mm
<b>H</b> Maximum vertical wall dig depth	4436 mm	4800 mm	4946 mm
<b>I</b> Minimum swing radius	3464 mm	3415 mm	3364 mm
<b>Arm digging power</b>			
Standard	12440 kgf	10452 kgf	9432 kgf
<i>Power Boost</i>	13664 kgf	12511 kgf	10370 kgf
<b>Bucket digging power</b>			
Standard	14949 kgf	14938 kgf	14949 kgf
<i>Power Boost</i>	16437 kgf	16427 kgf	16437 kgf

\* Dimensions with 1.3 m<sup>3</sup> GP bucket

## STANDARD EQUIPMENT

### OPERATOR STATION

6-pad oil damping system  
 ROPS cab  
 Fabric Seat with mechanical suspension and 10 settings  
 Seatbelt  
 Air conditioning  
 AM/FM radio  
 Control Panel  
 Joystick-type levers to control the hydraulic functions  
 Movement pedals with auxiliary levers for hand control  
 Footrests  
 Safety lever that neutralizes the hydraulic functions with action-delay timer  
 Fold-away windshield, with end of stroke sensor  
 Tilting sunroof  
 Two-speed intermittent front windshield wiper with water jet  
 Sliding side window  
 Outside rear-view mirror  
 Internal light  
 Cup holder, glove compartment and phone holder  
 Automatic electrical master switch

### ENGINE

Case Tier 3 diesel turbocharged  
*Dial* throttle control  
 Electronic engine rpm control  
*Auto-idle* device

### ELECTRICAL SYSTEM

Batteries (2)  
 Electronic monitoring system  
 Boom work lights  
 Cab front work lights  
 Swing system work light  
 90 A alternator

### HYDRAULIC SYSTEM

ISO standard steering controls Work mode selector: H, S, E  
 Auxiliary mode for attachment  
*Power Boost*  
 2 variable-flow piston pumps  
 Automatic pump flow reduction  
 Jackhammer optional  
 Cylinders with damped end of stroke

### TRACK

Shoes: triple 600 mm grouser  
 Track length: 4.45 m  
 Axle track: 2.49 m  
 Sealed and lubricated track

### TRACK DRIVE

2-speed hydrostatic drive system  
 Disk parking brakes

### UPPERSTRUCTURE

5.65 m monoblock boom  
 2.40 m dipper  
 Swing brake  
 Swing crown gear in oil bath

### OTHER

Central lubrication for monoblock arm  
 600 mm shoes  
 1.3 m<sup>3</sup> GP bucket

## OPTIONAL EQUIPMENT

### Dipper:

- 2400 mm
- 2940 mm
- 3500 mm

Buckets for general use, for rock and for heavy duty use (see table)

Shoes – 600 – 700 – 800 – 900 mm

Hydraulic jackhammer can be fitted

Rotary grouser can be fitted

Hydraulic pincers can be fitted

Auxiliary lighting

Front guard (FOPS)

Upper guard (FOPS)

Rear camera

Refueling pump

Sitewatch monitoring system

Beacon

Pneumatic suspension seat

## BUCKET CAPACITIES

### CX220C – SAE J742

Bucket	cap. m <sup>3</sup>	width mm	weight kg	No. of teeth
GP <i>Wide</i>	0.8	960	720	5
GP	1.1	1260	780	6
GP	1.3	1460	890	7
GP <i>Narrow</i>	1.1	990	735	5
GP	1.3	1090	785	5
GP	1.5	1200	850	5
GP	1.7	1400	975	6
HD <i>Wide</i>	0.8	990	1060	4
HD	1.1	1280	1235	5
HD	1.3	1460	1320	6
HD <i>Narrow</i>	1.1	990	1080	5
HD	1.3	1090	1260	5
HD	1.5	1200	1360	5
<i>V Shape</i>	0.4	2354/420	466	-
<i>Ditch Cleaning</i>	1.1	1695	790	-

SAE bucket, 100% heaped, maximum range, 360° working rotation

**GP:** general purpose

**GPN:** general purpose - earth and fine aggregates (narrow bucket)

**HD:** earth and fine aggregates (wide bucket) heavy duty – gravel, rock and ore (wide mouth) **HDN:** heavy duty – gravel, rock and ore (narrow bucket)

**V Shape:** general use – trapezoidal ditches

**Ditch Cleaning:** general use – cleaning rivers and flooded areas

Case reserves the right to improve designs and change specifications at any time, without obligation to fit them on previously sold units. The specifications, descriptions, and illustrations included here accurately reflect the details known on the publication date, but may vary from region to region and are subject to change with no advance notice. The illustrations may include optional equipment and attachments, and may not include all standard equipment.

**CCE-CX220C-I01 – 12/2014 - Printed in Brazil**

**[www.casece.com](http://www.casece.com)**

**Commercial Office:**

Sorocaba – São Paulo – Brazil  
Av. Jerome Case, 1.801  
Éden – CEP 18087-220  
Tel.: +55 15 3334-1700

Contagem – Minas Gerais – Brazil  
Av. General David Sarnoff, 2.237  
Inconfidentes – CEP 32210-900  
Tel.: +55 31 2104-3392

Sorocaba – São Paulo – Brazil  
Av. Jerome Case, 1.801  
Éden – CEP 18087-220  
Tel.: +55 15 3334-1700

