

# **CASE** *Compact Wheel Loaders*

CONSTRUCTION

F SERIES



21F | 121F | 221F | 321F

**SINCE 1842**









## *Big performance in a smaller machine*

The next generation of CASE compact wheel loaders are more versatile and high performing than ever — featuring faster cycle times, more agility in close quarters, and improved material retention. Plus, the attachment coupler works with a wide range of attachment brands for even more flexibility and convenience. The new F Series has been redesigned to do more and require less of you. It combines a stronger and more compact frame for greater stability and breakout force with maintenance-free Tier 4 Final technology. All, of course, with the same durability you expect from CASE.

- + Maintenance Free Tier 4 Final Solution
- + Large comfortable cab
- + Ground-line serviceability
- + Greater lifting and breakout force
- + Low profile frame
- + Greater versatility with High Flow and Creep Speed



***DO MORE WITH MORE***





#### **CASE RIDE CONTROL™**

Move material faster without dropping or spilling it with our innovative Ride Control™ option. Simply push a button to allow the lift cylinders to become shock absorbers at transport speeds, reducing porpoising and greatly improving material retention and productivity.



#### **MAINTENANCE-FREE TIER 4 FINAL SOLUTION**

All F Series compact wheel loaders are Tier 4 Final certified and incorporate a proven maintenance-free solution. No Regeneration, No Expensive filters to replace, No extreme exhaust temperatures, No after-treatment fluids to add.



#### **STRONGER, LOWER-PROFILE FRAME**

A solid compact frame provides tighter turning radius, better clearance into barns and outbuildings, and better maneuverability on constricted job-sites and narrow feed passageways, while the Z-bar linkage provides stronger breakout force for the toughest jobs.



#### **PRECISE CONTROL**

The Inch & Brake pedal progressively disengages the transmission in the decelerating phase while progressively engaging the brakes, allowing power to be diverted to the loaders hydraulics without disconnecting the drive yet still maintaining constant engine rpm. Optional Creep Speed allows the operator to independently set engine RPM and ground speed for greater control and performance with various attachments.



#### **MINIMUM SPEED, MAXIMUM FLOW**

The High Flow option comes with Creep Speed, which provides maximum hydraulic flow at constant speed in the 0 to 3.4 mph (5.5 km/h) range, ideal for tasks such as snow plowing and cold planing. Front electrical socket and case drain complete the package.



#### **GROUND-LINE SERVICEABILITY**

Easy access to all daily and routine service points.



#### **QUICK HYDRAULIC HOOKUPS**

Skid steer style coupler and auxiliary hydraulic connections make attachment hookups fast and easy.



#### **EXCELLENT STABILITY**

The rear axle on the F series oscillates to a maximum angle of 20 degrees, allowing the rear wheels to maintain contact with the ground in undulating terrain. This system enhances overall safety and load retention.

## COMFORTABLE CAB

More comfort means operators can stay productive. All F Series loaders offer a roomy ROPS/FOPS-certified cab with a spacious width of nearly 5 feet. It's fully sealed and pressurized to keep out noise, dust and fumes, and offers an optional radio and upgraded climate control system to keep in the good.



### Easy access to everything

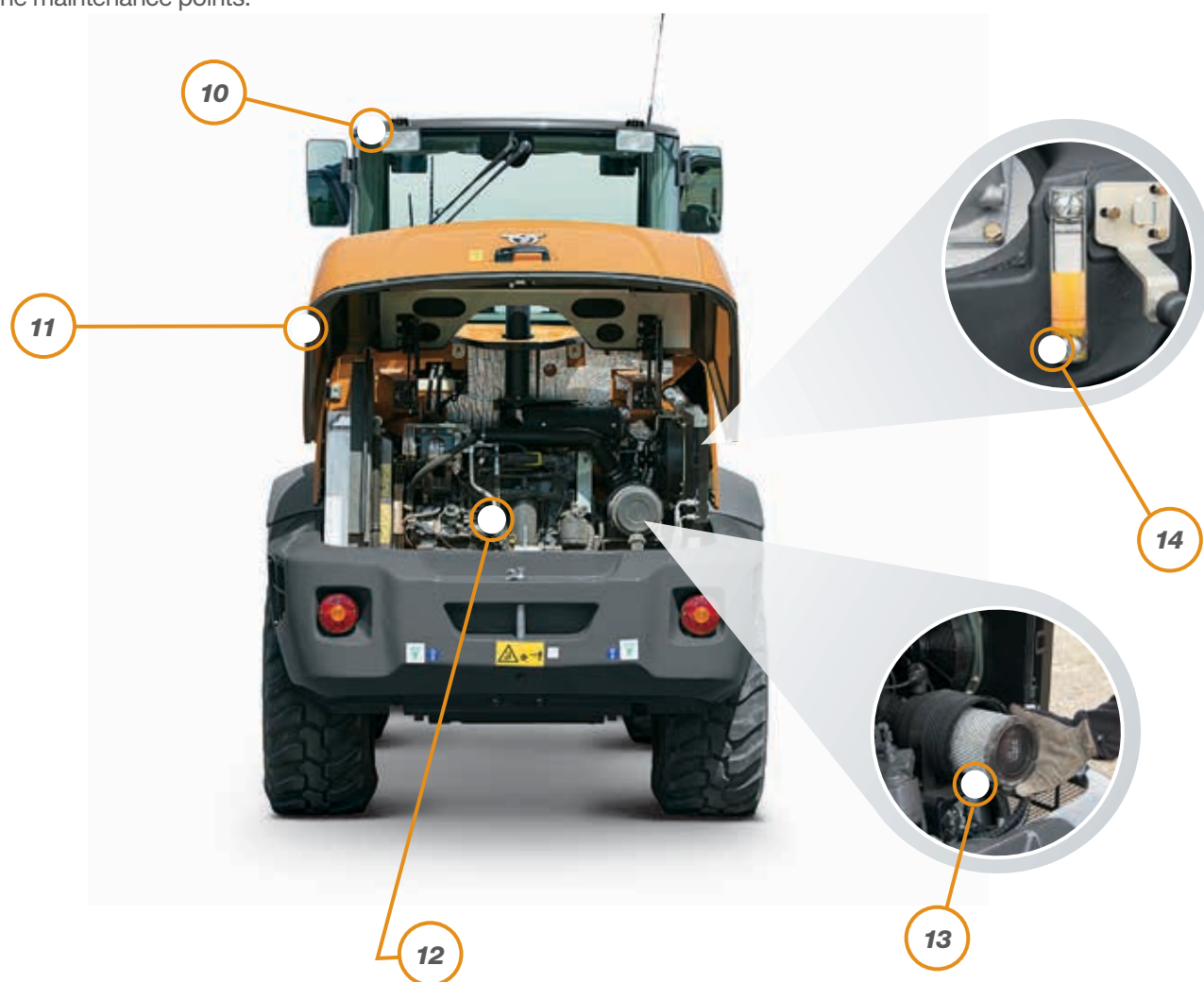
- |  |  |                                 |
|--|--|---------------------------------|
| 1 Skid steer style coupler                         | 4 Grease Bank                            | 7 Air seat                      |
| 2 Skid steer style auxiliary hydraulic connections | 5 Multi-function joystick                | 8 Storage compartments          |
| 3 Bluetooth radio                                  | 6 Tilting and telescopic steering column | 9 Engine coolant check and fill |

## MAINTENANCE MADE EASY

Maintenance is a breeze. With a tilt-up hood and friendlier access to daily checkpoints, the new F Series compact wheel loaders were redesigned to simplify serviceability. Radiators, filters, hydraulics and the engine are all easily accessible so routine maintenance can be done in a matter of minutes.

### NO TOOLS NECESSARY

The F Series continues the CASE hallmark of simple serviceability with features like tool-free access to the oil cooler, radiator and other routine maintenance points.



10 LED work lights (optional)

11 Tilt-up hood

12 Engine oil check and fill

13 Air filter access

14 Hydraulic check & fill



## ***MATCH THE MACHINE TO THE JOB***

The F Series includes both XT and Z-bar models. Which is the right design for you? It all depends on the application. That's why CASE is one of the only manufacturers to offer both.

### ***Z-bar***



Z-bar machines are engineered for digging and scooping. The durable Z-bar linkage provides greater breakout forces for strong, powerful digging and complete bucket fill even in the hardest materials.

### ***XT***



XT Linkage provides parallel lift, which keeps loads level automatically; making it ideal for lift-and-carry and truck loading jobs.



## ATTACHED TO STRENGTH

### ATTACHMENTS GALORE AND SO MANY MORE

F Series loaders are compatible with more than 250 buckets, forks, brooms, augers, rakes, grapples, snow accessories, bale spears and other CASE attachments, including CASE compact track loader and skid steer loader attachments. CASE also has partnerships with numerous attachment manufacturers to give you even greater versatility. Consult your dealer for details.



Manure Scraper



Snow Bucket



Bale Handler



Side Discharge Bucket



Concrete Bucket



Concrete Claw



Scrap Grapple



Brush Grapple



Root Rake



Rotary Cutter



Auger



Dozer Blade



Pallet Forks



Bale Spear

SEE OUR FULL LINE AT [CASECE.COM/ATTACHMENTS](http://CASECE.COM/ATTACHMENTS)

#### INTEGRATED HYDRAULIC QUICK-COUPLER

Avoid the elements and downtime by quickly switching attachments from the comfort of the cab, thanks to an integrated hydraulic quick-coupler.



## **SUPPORT COMES STANDARD**

### **BASE & EXTENDED WARRANTY COVERAGE\***

#### **1-YEAR/UNLIMITED-HOUR FULL-COVERAGE BASE LIMITED WARRANTY**

#### **2-YEAR/2,000-HOUR EXTENDED ENGINE WARRANTY**

Discuss the extended engine warranty coverage details with your dealer.

#### **UPTIME SOLUTIONS**

Your CASE dealer can provide solutions to meet all your needs and keep you productive.



#### **STRONGER PRODUCT SUPPORT SOLUTIONS**

Your CASE dealer knows best how you can maximize your equipment investment and uptime—with genuine CASE parts, expert service and a complete range of product support solutions including CASE remanufactured and all-makes parts. CASE supports better parts availability and faster deliveries through nine parts distribution centers in North America and a forecasting system to ensure that the right parts will be there when you need them. And only CASE dealers have exclusive access to the Electronic Service Tool (EST) that quickly pinpoints machine issues. Just ask your dealer for details.



#### **FLEXIBLE FINANCIAL OPTIONS**

Specialized finance programs and flexible leasing packages put you in the driver's seat of industry-leading CASE equipment while no-nonsense warranties and comprehensive protection plans ensure that your equipment is protected. As the only finance company dedicated to CASE, we offer strong products and services designed around your unique needs and are the only ones supported by the helpful service professionals at your CASE dealer.

\*Please see your CASE dealer for limitations, exclusions and confirmation of policies in effect.



## SPECIFICATIONS AND DIMENSIONS

SPECIFICATIONS	21F XT	21F	121F XT	121F	221F	321F
<b>Engine</b>	FPT F5H FL463 B	FPT F5H FL463 B	FPT F5HFL463 C	FPT F5HFL463 C	FPT F5HFL463 A	FPT F5HFL463 A
<b>Emissions Certification* Solutions</b>	Tier 4 Final (CEGR, DOC)	Tier 4 Final (CEGR, DOC)	Tier 4 Final (CEGR, DOC)	Tier 4 Final (CEGR, DOC)	Tier 4 Final (CEGR, DOC)	Tier 4 Final (CEGR, DOC)
<b>Net Horsepower – hp (kW)</b>	58 (43)	58 (43)	64 (48)	64 (48)	74 (55)	74 (55)
<b>Peak Torque @ 1400 RPM – lb-ft (N·m)</b>	181 (245)	181 (245)	193 (261)	193 (261)	233 (316)	233 (316)
<b>Full Turn Tipping Load ISO – lb (kg)</b>	7,055 (3 200)	6,997 (3 174)	7,083 (3 213)	6,898 (3 129)	8,014 (3 635)	8,192 (3 716)
<b>Operating Weight – lb (kg)</b>	10,979 (4 980)	11,272 (5 113)	11,067 (5 020)	11,618 (5 270)	12,547 (5 691)	13,303 (6 034)
<b>Bucket Breakout Force – lbf (kg)</b>	6,753 (3 063)	9,199 (4 172)	6,559 (2 975)	8,971 (4 069)	10,959 (4 971)	10,076 (4 570)
<b>Auxiliary Hyd. Standard Flow/ High Flow – gpm (lpm)</b>	22.5 (85)/-	22.5 (85)/-	22.5 (85)/-	22.5 (85)/-	22.5 (85)/ 34.3 (130)	22.5 (85)/ 34.3 (130)
<b>Displacement/Cylinders – in³ (L)</b>	207.9 (3.4)/4	207.9 (3.4)/4	207.9 (3.4)/4	207.9 (3.4)/4	207.9 (3.4)/4	207.9 (3.4)/4
<b>Maximum Travel Speed Forward – mph (kph)</b>	12.4 (20)	12.4 (20)	12.4 (20)	12.4 (20)	18.6 (30)**	20.6 (33)**
<b>Ref. Bucket Capacity, heaped – yd³ (m³)</b>	0.92 (0.7)	0.92 (0.7)	1.05 (0.80)	1.05 (0.80)	1.2 (0.9)	1.3 (1.0)
<b>Max. Material Density – ISO lb/yc³ (kg/m³)</b>	3,853 (2 286)	3,821 (2 267)	3,385 (2 008)	3,296 (1 956)	3,404 (2 020)	3,131 (1 858)

DIMENSIONS	21F XT	21F ZB	121F XT	121F ZB	221F	321F
<b>Hinge Pin Height</b>	122.6 in (3 113 mm)	123.5 in (3 136 mm)	123.1 in (3 128 mm)	123.5 in (3 182 mm)	129.5 in (3 290 mm)	133.7 in (3 395 mm)
<b>Dump Height – Fully Raised @ 45° Dump</b>	90.0 in (2 287 mm)	90.6 in (2 302 mm)	90.2 in (2 292 mm)	92.1 in (2 339 mm)	95.5 in (2 425 mm)	98.1 in (2 493 mm)
<b>Bucket Reach at Full Height</b>	31.4 in (798 mm)	37.7 in (957 mm)	32.4 in (824 mm)	39.7 in (1 009 mm)	40.2 in (1 020 mm)	39.5 in (1 003 mm)
<b>Height to top of ROPS</b>	96.8 in (2 458 mm)	96.8 in (2 458 mm)	96.7 in (2 457 mm)	96.7 in (2 457 mm)	103.4 in (2 627 mm)	105.5 in (2 680 mm)
<b>Ground Clearance Under Shaft</b>	17.5 in (444 mm)	17.5 in (444 mm)	17.5 in (444 mm)	17.5 in (444 mm)	17.3 in (440 mm)	19.4 in (493 mm)
<b>Overall Width without Bucket</b>	68.5 in (1 740 mm)	68.5 in (1 740 mm)	68.5 in (1 740 mm)	68.5 in (1 740 mm)	73.2 in (1 860 mm)	73.2 in (1 860 mm)
<b>Overall Length – Bucket Level on Ground</b>	211.9 in (5 382 mm)	218.5 in (5 549 mm)	213.6 in (5 426 mm)	222.2 in (5 645 mm)	231.1 in (5 869 mm)	234.3 in (5 952 mm)
<b>Wheelbase</b>	81.7 in (2 075 mm)	81.7 in (2 075 mm)	81.7 in (2 075 mm)	81.7 in (2 075 mm)	87.6 in (2 225 mm)	87.6 in (2 225 mm)

Data is based upon the use of a general purpose bucket.

\*CEGR = Cooled Exhaust Gas Recirculation

DOC = Diesel Oxidation Catalyst

\*\*Based on High Speed axles.



## **BUILDING A STRONG CASE**

Since 1842, we at CASE Construction Equipment have lived by an unwavering commitment to build practical, intuitive solutions that deliver both efficiency and productivity. We continually strive to make it easier for our customers to implement emerging technologies and new compliance mandates.

Today, our global scale combined with our local expertise enables us to keep customers' real-world challenges at the center of our product development. This focus has led to numerous innovations like Ride Control™, EZ-EH controls, blade shake, PowerLift™, over-center boom design and the peace of mind that only CASE ProCare provides.

Every CASE machine is backed by more than 350 North American dealer locations, thousands of OEM, remanufactured and Gold Value™ parts, and flexible financing and insurance options that provide the kind of reliable, steadfast support you expect from a professional partner.

We are passionate about improving the lives of others, whether investing in our veterans or raising awareness about local infrastructure initiatives through Dire States. Our goal is to build both stronger machines — and stronger communities.

At the end of the day, we do what's right by our customers and our communities so that they can count on CASE.

**CaseCE.com/CWL**

©2017 CNH Industrial America LLC. All rights reserved. CASE is a trademark registered in the United States and many other countries, owned by or licensed to CNH Industrial N.V., its subsidiaries or affiliates. CNH Industrial Capital is a trademark in the United States and many other countries, owned by or licensed to CNH Industrial N.V., its subsidiaries or affiliates. Printed in U.S.A. Contains 10% post-consumer fiber.

Form No. CCE201702CWL  
Replaces Form No. CCE201602CWL

IMPORTANT: CASE Construction Equipment Inc. reserves the right to change these specifications without notice and without incurring any obligation relating to such change. Availability of some models and equipment builds vary according to the country in which the equipment is used. The illustrations and text may include optional equipment and accessories and may not include all standard equipment. Your CASE dealer/distributor will be able to give you details of the products and their specifications available in your area.



CASE Construction Equipment is biodiesel-friendly. NOTE: All engines meet current EPA emissions regulations. All specifications are stated in accordance with SAE Standards or Recommended Practices, where applicable.



Always read the Operator's Manual before operating any equipment. Inspect equipment before using it, and be sure it is operating properly. Follow the product safety signs and use any safety features provided.