

CASE
CONSTRUCTION

621F | 721F
WASTE HANDLERS



621F and 721F Waste Handlers

PURPOSE BUILT JUST FOR YOUR JOB.

CASE 621F and 721F Waste Handlers have been factory-designed specifically to thrive in harsh scrap, waste and recycling environments. A ton of specialized features, from protective guarding to advanced

engine and cooling system technologies to heavy-duty axles, no-flat tires, secondary cab filters and improved controls, save you money on fuel and time during the day while keeping operators comfortable.

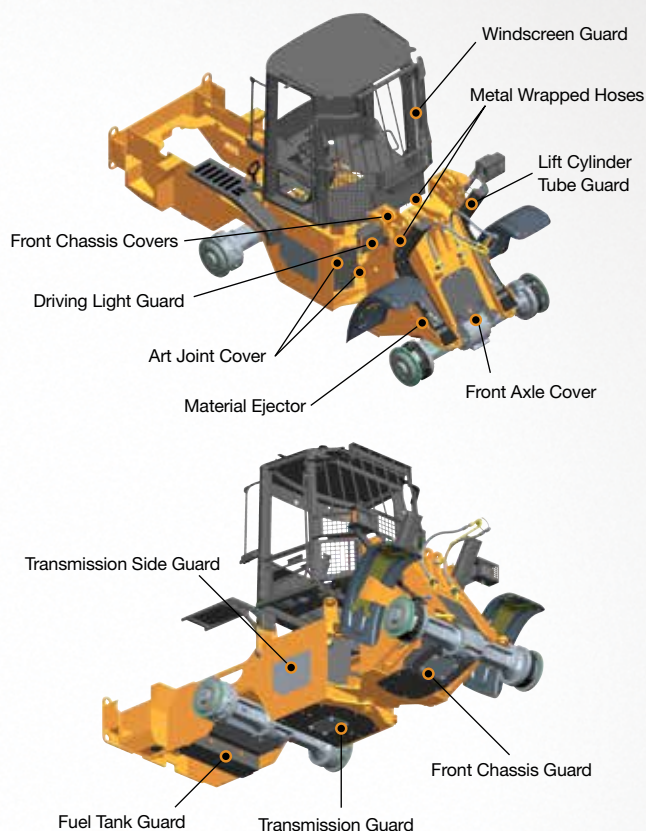


621F/721F Highlights

- 1 Available rear view camera improves the already **best-in-class rear visibility**.
- 2 Proven SCR Tier 4 technology keeps operating temperatures low and delivers up to **18% better fuel economy** over previous Tier 3 models. No DPF regeneration where exhaust temperatures can be a jobsite hazard.
- 3 SolidFlex no-flat tires provide assurance of continual operation in conditions where pneumatic tires won't last. Solid rubber design increases stability and lift performance while also extending tire life to 3x that of its pneumatic equivalent.
- 4 CASE Cooling Cube reduces cleanout intervals and susceptibility to thermal events and comes standard with an auto-reversible fan.
- 5 Axle choices to suit your needs: limited slip front and rear or front locking differential and conventional rear differential.
- 6 CASE Quiet Cab delivers **class-leading comfort and visibility** thanks to award-winning joystick steering, an available heated/air-ride seat and floor-to-ceiling windows.
- 7 **16 customized guarding points** keep equipment operating and operators safe.
- 8 Available Ride Control™ provides excellent material retention and machine control over rough terrain.
- 9 Auto-locking front differentials provide 100% of available torque to the wheel that grips for outstanding traction in all conditions.
- 10 Three loader linkage styles available to match jobsite application: traditional Z-bar, Extended Reach (XR) for extra reach and height when loading, and XT Tool Carrier for parallel lift and greater attachment versatility and visibility.
- 11 Array of optional attachments that simplify waste handling and scrapyard work, including waste buckets, grapples, car forks and more.

Specialized Guarding.

The 621F WH and 721F WH boast factory-installed protective guards in 16 critical areas around, above and beneath the machine.



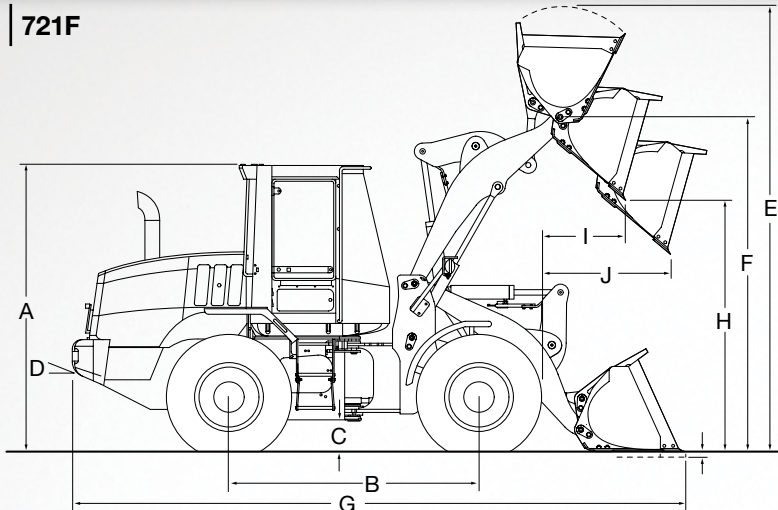
Dependable Power, Proven Productivity.

For idle-heavy applications with variable power demands, SCR technology is the most obvious choice. Both waste handler models have a powerful 6.7-liter engine that provides robust lifting strength, faster throttle response and higher speeds while delivering up to 18% better fuel efficiency over alternative solutions. Economy is optimized even further with auto-idle, auto-shutdown and four programmable power modes that match engine output to the task at hand. Best yet, SCR is simple. No regeneration. No downtime. No extreme temperature spikes. Just pour and go.

High-Efficiency Cooling Cube.

The mid-mounted, easy-access cooling cube is designed to reduce the need for manual cleaning and results in a machine that runs cooler and safer in hazardous environments. Features include a slanted, self-cleaning module cover, an auto-reversing fan that purges debris for you, a Sy-Clone ejective air pre-cleaner and wider fin spacing.

621F | 721F



Line drawings are for illustrative purpose only and may not be exact representation of unit. Specifications are subject to change.

DIMENSIONS	621F Z-Bar	721F Z-Bar
A. Height to top of ROPS cab	133.3 in. (3 385 mm)	133.3 in. (3 385 mm)
B. Wheelbase	114.2 in. (2 900 mm)	128.1 in. (3 253 mm)
C. Ground clearance	14.6 in. (370 mm)	14.4 in. (365 mm)
D. Angle of departure	27°	32°
E. Operating height – fully raised with spillguard	211.3 in. (5 367 mm)	227.6 in. (5 782 mm)
F. Hinge pin height – fully raised	150.8 in. (3 830 mm)	156.6 in. (3 977 mm)
G. Overall length – bucket level on ground**	309 in. (7 848 mm)	320.7 in. (8 146 mm)
H. Dump height – fully raised, 45° dump**	96.1 in. (2 441 mm)	97.9 in. (2 488 mm)
I. Bucket reach – fully raised, 45° dump**	43.1 in. (1 095 mm)	47.9 in. (1 216 mm)
J. Bucket reach – 7 ft. 0 in. (2.13 m) height, 45° dump**	53.9 in. (1 368 mm)	59.1 in. (1 502 mm)

SPECIFICATIONS	621F Z-Bar	721F Z-Bar
Engine	FPT F4HFE613Z	FPT F4HFE613Y
Emissions certification*	Tier 4 Interim	Tier 4 Interim
Net peak hp (kW)	162 (121)	178 (133)
Net peak torque – lb/ft (Nm)	510 (692)	674 (914)
Displacement – in³ (L)/ Cylinders	411 (6.7)/ 6	411 (6.7)/ 6
Operating weight – lb (kg)	32,768 (14 863)	37,831 (17 160)
Transmission Gears	4F/3R	4 or 5F/3R
Bucket Range capacity – yd³ (m³)**	2.4 - 4.5 (1.8 - 3.4)	3.0 - 5.5 (2.3 - 4.2)
Breakout force – lb (kg)**	18,544 (8 411)	22,927 (10 399)
Full turn tipping load – lb (kg)	16,162 (7 331)	19,105 (8 666)

*Maximum Torque shown for this model

**Specs listed with 4.5 yd³ (3.4 m³) bucket for the 621F and the 5.5 yd³ (4.2 m³) bucket for the 721F

Protected by

ProCare

The 621F and 721F WH come standard with the industry's first all-in-one heavy machine support program that's as powerful as the equipment it protects – CASE ProCare. ProCare includes:

3K 3-year/3000-hr. Full-Machine Factory Warranty*.

We've got your back – for three full years!

3-year/3000-hr. Planned Maintenance.

Don't spend another dime for scheduled care from factory-trained CASE technicians.

3-year SiteWatch™ Subscription.

Telematics isn't a luxury, it's a necessity – and we've made it accessible to all.

Maintenance Made Easy.

From ground-level service checks to eye-level fluid gauges to a hydraulic lift, tilt-up rear hood that provides complete engine access, F Series Waste Handlers offer a level of serviceability like no other.



*See your dealer for the complete terms of CNH's Warranty and Limitation of Liability, which contains certain limits and exclusions.



©2014 CNH Industrial America LLC. All rights reserved. CASE is a trademark registered in the United States and many other countries, owned by or licensed to CNH Industrial N.V., its subsidiaries or affiliates. CNH Industrial Capital is a trademark in the United States and many other countries, owned by or licensed to CNH Industrial N.V., its subsidiaries or affiliates. Printed in U.S.A.



**SAFETY™
NEVER HURTS**

Always read the operator's manual before operating any equipment. Inspect equipment before using it, and be sure it is operating properly. Follow the product safety signs and use any safety features provided.

All engines meet current EPA emission regulations.

All specifications are stated in accordance with SAE standards or recommended practices, where applicable.



Contains 10% post-consumer fiber



CASE construction equipment is biodiesel friendly.