



Case gasoline or diesel engines
 Choice of 4-speed or 8-speed transmission with synchronized shuttle.
 12½' Case-built backhoe
 12½' -15½' Extindahoe
 Industrial Styling
 Regenerative hydraulics
 2600 lbs. capacity loader
 Exclusive Mod Hitch System
 Exclusive Hydra-Guide

480B Construction King

Features

Basic Tractor—Big bore, long stroke Case engines generate maximum lugging power at low rpm for efficiency and fuel economy.

Choice of 4-speed or 8-speed transmission with synchronized shuttle. Steering-column-mounted shuttle lever simplifies forward-reverse cycling. Both transmissions offer 25% faster reverse speed for stepped up cycling.

Heavy-duty front axle with spindles and bearings designed for high load carrying ability.

Full-time Hydrostatic power steering lets the operator maneuver with ease with a full load in the bucket. Saves time and effort. Ideal for close quarter work.

Loader/Landscaper—Power-linkage provides 5500 lbs. (2495 kg) breakout, up to 35° bucket rollback at ground line and up to 110° bucket roll-over. While grading, bucket cylinders are fully retracted. No rod deflection, minimum stress on both cylinders and linkage.

Unit-designed loader and tractor combines strength and ruggedness for dependable performance and long life.

Choice of loader with one or two dump cylinders.

Choice of loader buckets. They feature wrap-around cutting edge for greater strength. Digging teeth available if desired.

Optional exclusive Mod Hitch system for 3-point hitch and rear-mounted equipment, including all-purpose blade, scarifier-scraper-rake, tillage, seeding and mowing tools.

Backhoes—choice of 12½' Case-built backhoe or 12½' to 15½' Case Extindahoe. Feature OHHP—Optimum Hydraulic Horsepower—for maximum performance, capacity. Extindahoe hydraulically extends or retracts from operator's seat.

Closed box design backhoe boom and dipper stick has 10 times the torsional strength of conventional, open-type backhoe booms. Withstands

the twists of big production trenching and excavating. Less maintenance.

Fast, accurate 190° foot-controlled swing or dual-lever hand control. Hydraulic cushioned stops with automatic feathering action. Smoother operation, more production.

Hydraulic regenerative system charges cylinders as quickly as hydraulic oil is forced out. Lower and start to dig instantly without waiting for hydraulic pressure build-up.

Nine sizes and types of backhoe buckets to meet every digging need. All constructed to resist high production stresses.

Exclusive Hydra-Guide (hydraulic backhoe guidance system) 2 position system: (1) Flat bottom trench, (2) Automatically fill the bucket every time.

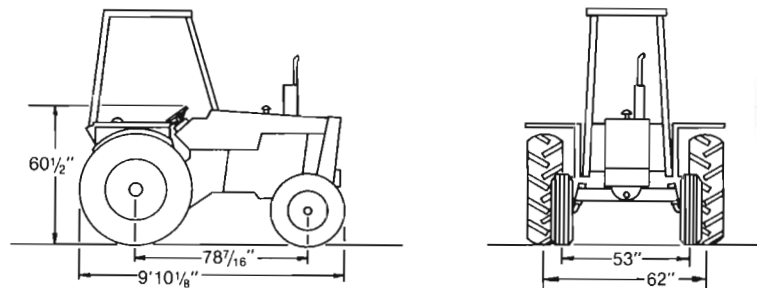
Unit shown is equipped with non-standard items. Manufactured by J I Case Company, Racine Wisconsin USA

J I Case

A Tenneco Company



Specifications 480B Construction King Drawbar Tractor



Engine

	Gasoline	Diesel
Make and model	Case G148B	Case G188D
Fuel	gasoline, reg.	diesel, No. 2
Number of cylinders (valve in head)	4	4
Bore and stroke	3 3/8" x 4 1/8" (86 mm x 105 mm)	3 13/16" x 4 1/8" (97 mm x 105 mm)
Displacement	148 cu. in. (2425 cm ³)	188 cu. in. (3081 cm ³)
Electrical system	12V	12V
Battery	(1) 12V (55 amp hr)	(1) 12V (105 amp hr)
Compression ratio	7.1 to 1	17.5 to 1
Fuel induction	up-draft carb.	injectors
Fuel supply	gravity feed	injection pump
Air cleaner	dry type-renewable element	dry type-renewable element
Oil filter - full flow	renewable cartridge	renewable cartridge
Lubrication	positive pressure	positive pressure
Cooling system	pressurized, 4 psi	pressurized, 4 psi
Horsepower		
(1) Mfg. rated @ 1750 rpm	38.5	41.5
(2) Net flywheel	34	37
Maximum torque, ft-lb (m-kg)		
(1) Mfg. rated	127 @ 1200 rpm (17.6 @ 1200 tr/mn)	133 @ 1250 rpm (18.4 @ 1250 tr/mn)
(2) Net	111 @ 1200 rpm (15.4 @ 1200 tr/mn)	119 @ 1250 rpm (16.5 @ 1250 tr/mn)
Torque at governed rpm		
ft-lb (m-kg)		
(1) Mfg. rated	115 @ 1750 rpm (15.9 @ 1750 tr/mn)	124 @ 1750 rpm (17.1 @ 1750 tr/mn)
(2) Net	103 @ 1750 rpm (14.2 @ 1750 tr/mn)	111 @ 1750 rpm (15.4 @ 1750 tr/mn)

- (1) Manufacturer's rating of maximum engine horsepower or torque at flywheel when equipped with oil and water pumps. Fuel set at maximum quantity for this application. Corrected to sea level 29.92" (760 mm) Hg. and 60° F. (16° C) dry air.
- (2) SAE net flywheel horsepower or torque of engine as applied to this vehicle when equipped with operating accessories including oil and water pumps, alternator, air cleaner, fan and muffler. Corrected to 500' (152.4 m) altitude with .38" (10 mm) Hg. vapor pressure 29.38" (746 mm) Hg. observed barometer and 85° F. (29° C) Per SAE J816a specifications.

Power Train

Transmission: 4-speed sliding spur gear with synchronized shuttle shift (standard on drawbar and loader models). Or 8-speed sliding spur gear with dual range lever and synchronized shuttle shift (standard on backhoe models and optional on drawbar and loader models).

Clutch: foot operated, mechanical, single plate, dry disc, 11" (279 mm) diameter with ferrometallic lining.

Reversing Unit: manual synchronized sliding gear.

Final Drive: spur gear.

Brakes: individual or simultaneous foot actuated, mechanical, 6-1/2" (165 mm) disc with parking lock.

Front Axle Rating

Dynamic	34,000 lbs. (15422 kg)
Static	8500 lbs. (3856 kg)

Rear Axle Rating

Dynamic	33,000 lbs. (14968 kg)
Static	11,000 lbs. (4989 kg)

Steering

Power steering	Hydrostatic
Turning ratio (stop to stop)	2-3/4 turns

Capacities

	Gasoline	Diesel
Cooling system	14 quarts (13.2 liters)	16.5 quarts (15.6 liters)
Fuel tank	22 US gallons (83 liters)	22 US gallons (83 liters)
Engine oil with filter change	4 quarts (3.8 liters)	4 quarts (3.8 liters)
Transmission	17 quarts (16.1 liters)	17 quarts (16.1 liters)

Tractor Operational Data

Curb clearance circle				
-with brakes		21'6" (6553 mm)		21'7" (6579 mm)
-without brakes		21'9" (6629 mm)		21'10" (6655 mm)
Travel Speeds mph (km/h)				
With 4-speed transmission - 1750 rpm - 13.6 x 24 tires:				
	1st	2nd	3rd	4th
Forward	2.5 (4.0)	4.8 (7.7)	5.9 (9.5)	16.9 (27.2)
Reverse	3.1 (5.0)	6.0 (9.7)	7.3 (11.7)	21.1 (33.9)
With 8-speed transmission - 1750 rpm - 13.6 x 24 tires:				
	1st	2nd	3rd	4th
Low Range				
Forward	1.6 (2.6)	2.9 (4.7)	3.6 (5.8)	10.4 (16.7)
Reverse	2.0 (3.2)	3.7 (6.0)	4.5 (7.2)	13.0 (20.9)
Direct Range				
Forward	2.5 (4.0)	4.8 (7.7)	5.9 (9.5)	16.9 (27.2)
Reverse	3.1 (5.0)	6.0 (9.7)	7.3 (11.7)	21.1 (33.9)
Gear Ratios				
	1st	2nd	3rd	4th
	2.94	1.52	1.25	0.43
Direct/low range ratio				1.612 to 1
Forward/reverse ratio				1 to 0.804
Final reduction				31.19 to 1

Tractor Dimensions

	Gasoline	Diesel
Overall length	9'8 7/8" (2969 mm)	9'10 1/8" (3000 mm)
Overall width		76 5/8" (1946 mm)
with fixed disc rear wheels		77" (1956 mm)
with offset disc rear wheels	74" (1880 mm) to 81" (2057 mm)	
Wheelbase	77 7/16" (1961 mm)	78 7/16" (1992 mm)
Tread - front		53" (1346 mm)
rear, adjustable without backhoe		56" (1422 mm) to 62" (1575 mm)
rear, fixed with backhoe		62" (1575 mm)
rear, reversible disc		58" (1473 mm)
rear, with dual wheels		54" (1372 mm) inner
		82" (2083 mm) outer
Overall height - to top of exhaust stack		91" (2318 mm)
to top of canopy		102" (2591 mm)
to top of cab		106" (2692 mm)
Ground clearance		13" (330 mm)

Tractor Approximate Shipping Weight

Gasoline	3625 lbs. (1631 kg)
Diesel	3825 lbs. (1721 kg)

Tractor Standard Equipment

Anti-freeze solution to -20° F. Heavy-duty front axle with fixed tread of 53". Dry type replaceable cartridge air cleaner. Heavy-duty clutch. Swinging drawbar. 12-volt electrical system. Case G148B gasoline or Case G188D diesel (optional) engine. Rear fenders. Full flow oil filter. Floor plates. Front wrapper and heavy-duty grille. Gauges and instruments: condition gauge for loader and backhoe hydraulic system filter, temperature gauge, hour-meter, engine speed indicator (tachometer), engine oil pressure warning light, alternator indicator light, air cleaner restriction indicator, instrument panel light. Two shock-mounted headlights and combination rear working and red taillight. Upright oval muffler with deflector. Deluxe, easy-ride seat. Full-time Hydrostatic steering. Hand and foot throttle. 13.6 x 24, 4 PR, R1 rear tires. 7.50 x 16, 6 PR, I1 front tires. Tool box. 4-speed transmission with mechanical shuttle. Rear wheels adjustable in 4" increments from 56" to 62".

Optional Equipment

ROPS and Cab with built-in ROPS. Anti-freeze to -40°. Engine side panels. Lock up kit. Bucket seat. Engine block heater. Modular System 3-point hitch. Horn. Combination tail and stop light. Warning and flasher attachment light. Differential lock. PTO. Front and rear wheel weights. Front end weights. Fixed disc rear wheels (62" tread spacing). Noise suppression kit.

Tires

	Size	Ply	Pressure
Standard			
Front	7.50 × 16	6 PR (I1)	32 psi (2,2 kg/cm ²)
Rear — w/out backhoe	13.6 × 24	4 PR (R1)	14 psi (1,0 kg/cm ²)
Rear — with backhoe	13.6 × 24	6 PR (R1)	20 psi (1,4 kg/cm ²)
Optional			
Front	7.50 × 16	10 PR truck tr	56 psi (3,9 kg/cm ²)
Rear	14.9 × 24	6 PR (R3)	18 psi (1,3 kg/cm ²)
Rear	14.9 × 24	6 PR (R4)	18 psi (1,3 kg/cm ²)
Rear	14.9 × 24	6 PR (R1)	18 psi (1,3 kg/cm ²)
Rear	17.5L × 24	6 PR (R4)	16 psi (1,1 kg/cm ²)
Rear with drawbar only	16.9 × 28	6 PR (R1)	16 psi (1,1 kg/cm ²)
Rear with drawbar only	16.9 × 24	6 PR (R1)	16 psi (1,1 kg/cm ²)
Rear with drawbar only	16.9 × 24	6 PR (R3)	16 psi (1,1 kg/cm ²)
Rear with drawbar only	16.9 × 24	6 PR (R4)	16 psi (1,1 kg/cm ²)

Case Modular System 3-point Hitch

Heavy-duty hitch module mounts in minutes and uses same quick-couple hose connections as the backhoe.

Provides 3 separate double-acting hydraulic cylinders for power up, down, float, tilt right or left and adjust blade pitch of a landscaper blade or box scraper. A fourth auxiliary circuit powers hydraulics as desired (motoring spool available as optional).

Handles all 3-point hitch tools—scrapers, augers, rototillers, rakes, harrows, mowers, etc.

Dismounts in minutes, for quick-attaching backhoe or counterweight.

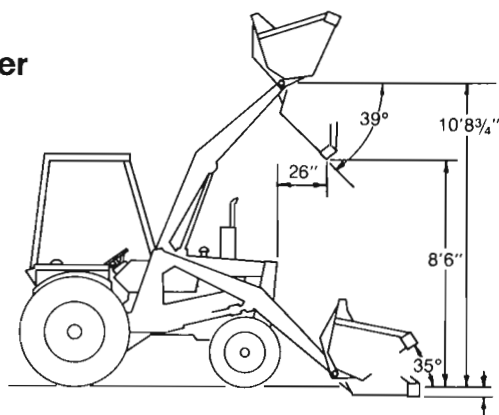
Gives one tractor the versatility of a fleet of machines at a fraction of the cost. Also available for drawbar tractor only — separate hydraulic system available.

Mod Hitch Weights and Dimensions

Weight	400 lbs. (181 kg)
Height of hitch	22-1/2" (572 mm)
Lift capacity	
At hitch point, 60°	4250 lbs. (1928 kg)
24" behind hitch point, 60°	2300 lbs. (1043 kg)
Lift height above ground	
14.9 × 24 tires	32" (813 mm)

Mod Hitch Control Valve: 4 spool sectional valve. Main relief valve is adjustable. For complete data on pump, reservoir, valves, see loader hydraulic system.

Loader



480B Construction King — One Dump Cylinder

Loader Operational Data

Lift capacity to full height	2600 lbs. (1179 kg)	
Height to bucket hinge pin	10'8 3/4" (3270 mm)	
Bucket rollback at ground line	35°	
Dump angle at full height	39°	
Grading angle	110°	
Digging depth below ground — bucket flat	2 1/4" (57 mm)	
	Short Lip	Long Lip
Breakout force, tilt cylinder pivot at bucket hinge pin	5500 lbs. (2495 kg)	4500 lbs. (2014 kg)
39° dump	8'9 3/4" (2686 mm)	8'6" (2591 mm)
Dump reach at full height		
39° dump (gasoline)	26" (660 mm)	30 1/4" (768 mm)
(diesel)	24 1/4" (616 mm)	28 3/4" (730 mm)
Reach, bucket flat on ground		
(gasoline)	70 1/4" (1784 mm)	76" (1930 mm)
(diesel)	68 1/2" (1740 mm)	74" (1880 mm)
Raising time to full height	3.5 sec.	
Bucket dumping time, bucket empty	1.8 sec.	
Lowering time, power down	1.7 sec.	
	With Brakes	Without Brakes
Turning clearance circle	31'5" (9576 mm)	33'5" (10185 mm)
Curb clearance circle (tractor only)	18'4" (6553 mm)	20'7" (6629 mm)

Loader Dimensions

Height to top of loader frame	64" (1626 mm)	
	Short Lip	Long Lip
Overall width	76 5/8" (1946 mm)	77" (1956 mm)
with fixed disc rear wheels - (optional)	77" (1956 mm)	74" (1880 mm)
with offset disk rear wheels - (optional)	74" (1880 mm)	to 81" (2057 mm)
Wheelbase		
gasoline	77 3/16" (1961 mm)	
diesel	78 7/16" (1992 mm)	
Tread		
front	53" (1346 mm)	
rear, reversible disc	58" (1473 mm)	
rear, with dual wheels	54" (1372 mm) inner	82" (2083 mm) outer
Ground clearance	13" (330 mm)	
Overall length, bucket flat		
with counterweight	14'8 1/2" (4483 mm)	15'2" (4623 mm)
with three point hitch	15'1 1/4" (4604 mm)	15'6 3/4" (4743 mm)

NOTE: Specifications taken with 7.50 × 16 - 6 PR (I1) front tires and 13.6 × 24 - 4 PR (R1) rear tires, 74" short lip loader bucket and standard equipment unless otherwise specified.

480B Loader — Two Dump Cylinders Optional

Loader Operating Data

Lift capacity to full height	2600 lbs. (1179 kg)	
Height to bucket hinge pin	10'8" (3251 mm)	
Bucket rollback at ground line	40°	
Dump angle at full height	45°	
Grading angle	110°	
Digging depth below ground bucket flat	4 3/4" (121 mm)	

	Short Lip	Long Lip
Breakout force, tilt cylinders pivot at bucket hinge pin	5630 lbs. (2554 kg)	4675 lbs. (2121 kg)
Dump clearance at full height		
45° dump	8'-5" (2565 mm)	8'-1" (2464 mm)
Dump reach at full height		
45° dump (gasoline)	27 1/2" (699 mm)	31 1/2" (800 mm)
(diesel)	25 1/2" (648 mm)	29 1/2" (749 mm)
Reach, bucket flat on ground		
(gasoline)	73 1/4" (1861 mm)	78 1/2" (1994 mm)
(diesel)	71 1/4" (1810 mm)	76 1/2" (1943 mm)
Raising time to full height	3.5 sec.	
Bucket dumping time, bucket empty	2 sec.	
Lowering time, power down	1.7 sec.	

Loader Dimensions

Height to top of loader frame	64" (1626 mm)	
Overall width — see loader above		
Ground clearance	13" (330 mm)	
	Short Lip	Long Lip
Overall length, bucket flat		
—with counterweight	14'11-3/4" (4566 mm)	15'5-1/4" (4705 mm)
—with three point hitch	15'4-1/2" (4686 mm)	15'10" (4826 mm)

NOTE: Specifications taken with 7.50 × 16 - 6 PR (I1) front tires and 13.6 × 24 - 4 PR (R1) rear tires, 74" short lip loader bucket and standard equipment unless otherwise specified.

Loader Approximate Shipping Weights (less bucket)

	Diesel
Loader/Counterweight (one dump cylinder)	6885 lbs. (3123 kg)
Loader/Three Point Hitch (one dump cylinder)	6165 lbs. (2796 kg)
Loader/Counterweight (two dump cylinders)	7010 lbs. (3180 kg)
Loader/Three Point Hitch (two dump cylinders)	6290 lbs. (2853 kg)

Loader Buckets

Single Tilt Cylinder Loader Only

Type	Width	Heaped Cap.	Struck Cap.	Weight
Short Lip	63-3/8" (1610 mm)	18.1 cu. ft. (0,51 m ³)	15.4 cu. ft. (0,44 m ³)	515 lbs. (234 kg)
Long Lip	63-3/8" (1610 mm)	20.0 cu. ft. (0,57 m ³)	17.5 cu. ft. (0,5 m ³)	550 lbs. (249 kg)
Short Lip	73-3/8" (1864 mm)	21.1 cu. ft. (0,6 m ³)	17.8 cu. ft. (0,50 m ³)	540 lbs. (245 kg)

Dual Tilt Cylinder Loader Only

Long Lip	64" (1626 mm)	20.0 cu. ft. (0,57 m ³)	17.5 cu. ft. (0,5 m ³)	575 lbs. (261 kg)
Short Lip	74" (1880 mm)	21.1 cu. ft. (0,6 m ³)	17.8 cu. ft. (0,5 m ³)	600 lbs. (272 kg)

Loader Hydraulic System

Pump	Front mounted, direct drive, gear type
Pump capacity - loader and loader/backhoe models	21 gpm @ 2100 ± 100 psi @ 1750 rpm (79 l/mn @ 147,6 ± 7 kg/cm ² @ 1750 tr/mn)
Pump capacity - modular hitch/drawbar models only	10 gpm @ 1800 ± 50 psi @ 1750 rpm (38 l/mn @ 126,5 ± 3,5 kg/cm ² @ 1750 tr/mn)
System relief valve setting (loader and loader backhoe models - adjusted at loader valve)	2100 ± 100 psi @ 1750 rpm (147,6 ± 7 kg/cm ² @ 1750 tr/mn)
System relief valve setting (three point valve)	1800 ± 50 psi @ 1750 rpm (126,5 ± 3,5 kg/cm ² @ 1750 tr/mn)
Filtration	40 micron full flow, replaceable cartridge on return line
Hydraulic reservoir refill capacity (loader or loader/backhoe)	11 US gallons (42 liters)

Cylinder design and packing: easy-to-service with threaded end cap. Hardened and chrome-plated rods. Cylinder equipped with two-way, triple-seal packing and metal guide rings for positive action. Nylon wiper rings and self-locking cap screw or nut on rod with "U" cup packing. Cylinders have micro-smooth bore for long packing life.

Loader Cylinders - Single Tilt Cylinder Loader

Tilt cylinder (1) double-acting	3" dia. × 20" stroke, 1-1/2" rod (76 mm dia. × 508 mm stroke, 38 mm rod)
Lift cylinders (2) double-acting	2-1/2" dia. × 31-7/16" stroke, 1-1/2" rod (64 mm dia. × 799 mm stroke, 38 mm rod)

Loader Cylinders - Double Tilt Cylinder Loader

Tilt cylinders (2) double-acting	2-1/2" dia. × 20" stroke, 1-1/2" rod (64 mm dia. × 508 mm stroke, 38 mm rod)
Lift cylinders (2) double-acting	2-1/2" dia. × 31-7/16" stroke, 1-1/2" rod (64 mm dia. × 799 mm stroke, 38 mm rod)

Two spool, mono-cast with power beyond and detented float position. Main relief is adjustable. Hydraulic lines: steel tubing with brazed or flared fittings and wire-braid, high-pressure hose with crimped, full-flow fittings.

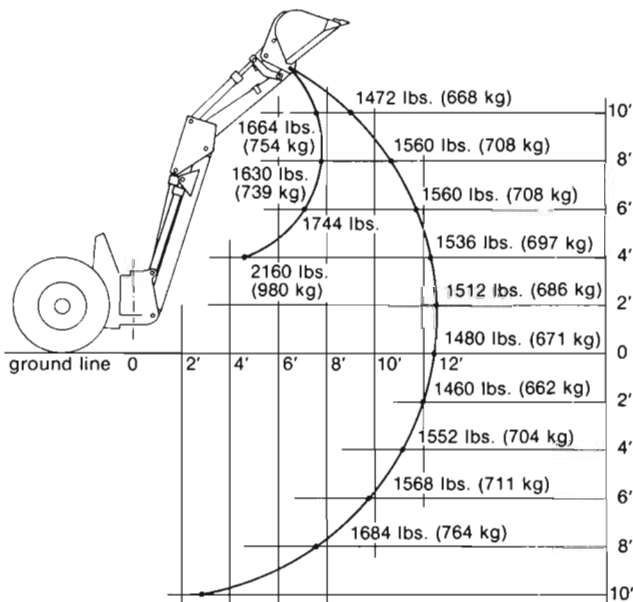
NOTE: All measurements made with standard equipment and short lip bucket unless otherwise noted.

Loader Model Standard Equipment

All tractor standard equipment plus Loader (less bucket) and hydraulic system complete. Bucket positioning gauge.

Loader Model Optional Equipment

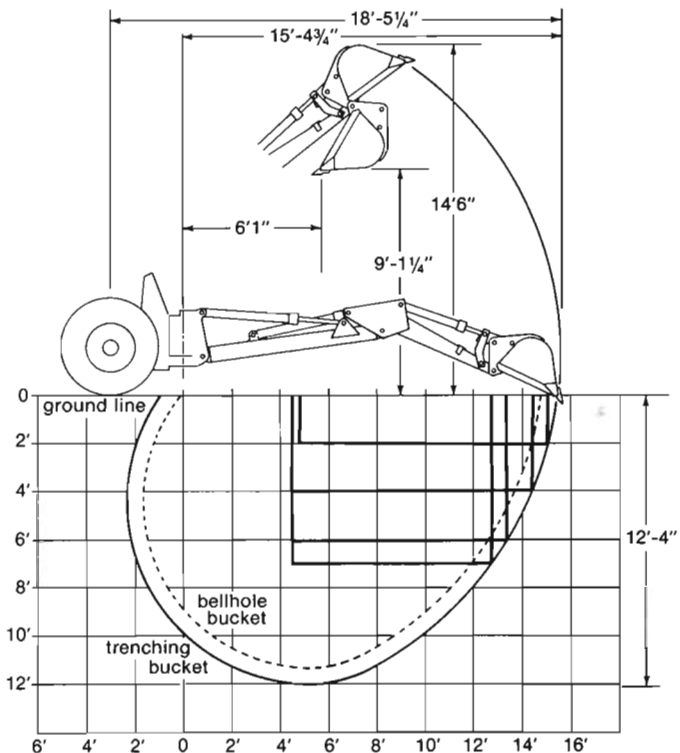
Tractor optional equipment plus rear counterweight. Bucket teeth



LIFT CAPACITY FIGURES ON THIS CHART ARE 80% OF THE MAXIMUM LIFT FORCE PER IEMC DEFINITION.

Specifications are limited to the capacity within 45 degrees to either side of the center line of the prime mover. Figures stated on chart are determined by static test and do not include dynamic factors.

Backhoes



480B Construction King Loader - 12 1/2' Backhoe Backhoe Operational Data

Digging depth - IEMC	12' (3658 mm)
Mfr. rated	12'4" (3759 mm)
Overall reach from rear axle centerline	18'5 1/4" (5620 mm)
Digging radius from swing pivot	15'4 3/4" (4693 mm)
Loading height	9'1 1/4" (2775 mm)
Loading reach at full height	6'1" (1854 mm)
Swing arc	190°
Stabilizer spread - operating position	8'9" (2667 mm)
transport position	8'1" (2057 mm)
Digging force, bucket cylinder	6870 lbs. (3116 kg)
Digging force, dipper cylinder	4650 lbs. (2109 kg)
Leveling angle - maximum grade on which the backhoe will make a vertical cut	11°

Backhoe Dimensions and Shipping Weight

Overall height, maximum	14'6" (4420 mm)
Transport height	10'1" (3073 mm)
Overall width - travel position	8'1" (2057 mm)
Overall length - loader bucket flat on ground and backhoe in transport - short lip loader bucket	21'9" (6629 mm)
- long lip loader bucket	22'2 1/2" (6769 mm)
Clearance height	9'6 1/2" (2908 mm)
Bucket rotation	157°
Ground clearance at backhoe	11" (279 mm)
Loader/Backhoe (less bucket) gasoline	7604 lbs. (3449 kg)
diesel	7804 lbs. (3504 kg)

NOTE: The above backhoe specifications taken with 24" trenching bucket, 74" short lip loader bucket, 7.50 × 16 - 6 PR (11) front tires, 13.6 × 24 - 4 PR (R1) rear tires and standard equipment unless otherwise specified.

Extendahoe

480B Construction King Loader - 12½' to 15½' Extendahoe

	Retracted	Extended
Digging depth — IEMC	12' (3658 mm)	15' (4572 mm)
— Mfr. rated	12'4" (3759 mm)	15'4" (4674 mm)
Overall reach from rear axle c/l	18'5-1/4" (5620 mm)	21'3-3/4" (6496 mm)
Digging radius from swing pivot	15'4-3/4" (4693 mm)	18'3-1/4" (5569 mm)
Loading height — maximum	9'3-1/2" (2832 mm)	11'0-1/2" (3366 mm)
Loading reach at full height	6'11-3/4" (2127 mm)	9'11-1/2" (3025 mm)
Swing arc	190°	190°
Stabilizer spread — oper.	8'9" (2667 mm)	8'9" (2667 mm)
— tran.	81" (2057 mm)	81" (2057 mm)
Digging force — bucket cylinder	5900 lbs. (2676 kg)	5900 lbs. (2676 kg)
Digging force — dipper cylinder	4600 lbs. (2087 kg)	3300 lbs. (1497 kg)
Leveling angle — max. grade on which backhoe will make vertical cut	11°	11°

Backhoe Dimensions and Shipping Weight

	Gasoline	Diesel
	Loader (less bucket)/Backhoe (3' Extendahoe)	8750 lbs. (3969 kg)
	Retracted	Extended
Overall height maximum	14'5" (4394 mm)	16'1½" (4915 mm)
Transport height	10'4" (3150 mm)	
Overall width — travel position	81" (2057 mm)	81" (2057 mm)
Overall length — loader bucket flat backhoe in transport short lip bucket	22'4¾" (6826 mm)	
long lip bucket	22'10¼" (6966 mm)	
Clearance height		10'9" (3277 mm)
Bucket rotation	133°	133°
Ground clearance at backhoe	10" (254 mm)	

NOTE: The above specifications taken with 24" trenching bucket, 74" short lip loader bucket, 7.50 x 16 - 6 PR (I1) front tires, 13.6 x 24 - 4 PR (R1) rear tires, dual dump cylinder loader and standard equipment unless otherwise specified.

Backhoe Hydraulic System

(For complete Hydraulic pump, reservoir data, see Loader Hydraulics) Cylinder design and packing: easy-to-service with threaded end cap. Hardened and chrome-plated rods. Cylinder equipped with two-way, triple-seal packing and metal guide rings for positive action. Nylon wiper rings and self-locking cap screw on rod with "U" cup packing. Cylinders have micro smooth bore for long packing life.

Backhoe Cylinders

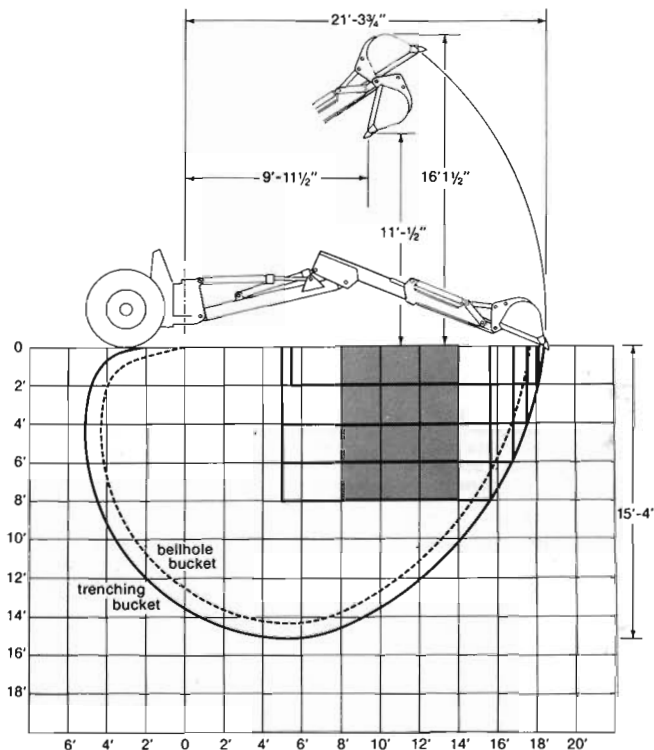
Boom cylinder (1) double-acting	4" dia. x 37-7/8" stroke, 2-1/4" rod (102 mm dia. x 962 mm stroke, 57 mm rod)
Dipper cylinder (1) double-acting	3-1/2" dia. x 33-1/8" stroke, 2" rod (89 mm dia. x 841 mm stroke, 51 mm rod)
Bucket cylinder (1) double-acting	3" dia. x 26-1/2" stroke, 1-3/4" rod (76 mm dia. x 673 mm stroke, 44 mm rod)
Swing cylinder (2) double-acting	3-1/2" dia. x 11" stroke, 1-1/2" rod (89 mm dia. x 279 mm stroke, 38 mm rod)
Stabilizer cylinder (2) double-acting	3" dia. x 16-3/8" stroke, 1-3/4" rod (76 mm dia. x 416 mm stroke, 44 mm rod)
Dipper extension cylinder (1) double acting	3" dia. x 36-7/16" stroke, 1-1/2" rod (76 mm dia. x 926 mm stroke, 38 mm rod)

Backhoe Control Valve: Six spool sectional valve. Relief valve setting controlled by loader main relief.

Hydraulic lines: steel tubing with brazed or flared fittings and wire-braid, high-pressure hose with crimped, full-flow fittings.

Backhoe Buckets

Width	Weight
12" Trenching (305 mm)	210 lbs. (95 kg)
18" Trenching (457 mm)	240 lbs. (109 kg)
24" Trenching (610 mm)	271 lbs. (123 kg)
30" Trenching (762 mm)	310 lbs. (141 kg)
36" Trenching (914 mm)	350 lbs. (159 kg)
12" Bellhole (305 mm)	133 lbs. (60 kg)
16" Bellhole (406 mm)	159 lbs. (72 kg)
30" Bellhole (762 mm)	224 lbs. (102 kg)
36" Bellhole/Graveyard (914 mm)	270 lbs. (122 kg)



Standard Equipment

Tractor standard equipment with 62" fixed disc in lieu of 56" to 64" adjustable rear wheels, 13.6 x 24, 6 PR, R1 in lieu of 13.6 x 24, 4 PR, R1 rear tires, 8-speed mechanical shuttle transmission in lieu of 4-speed, Model 26B Loader (less bucket) positioning gauge, Model 26B Backhoe (less bucket) with quick-disconnect mounting. Stabilizers. Hydraulic system and controls.

Optional Equipment

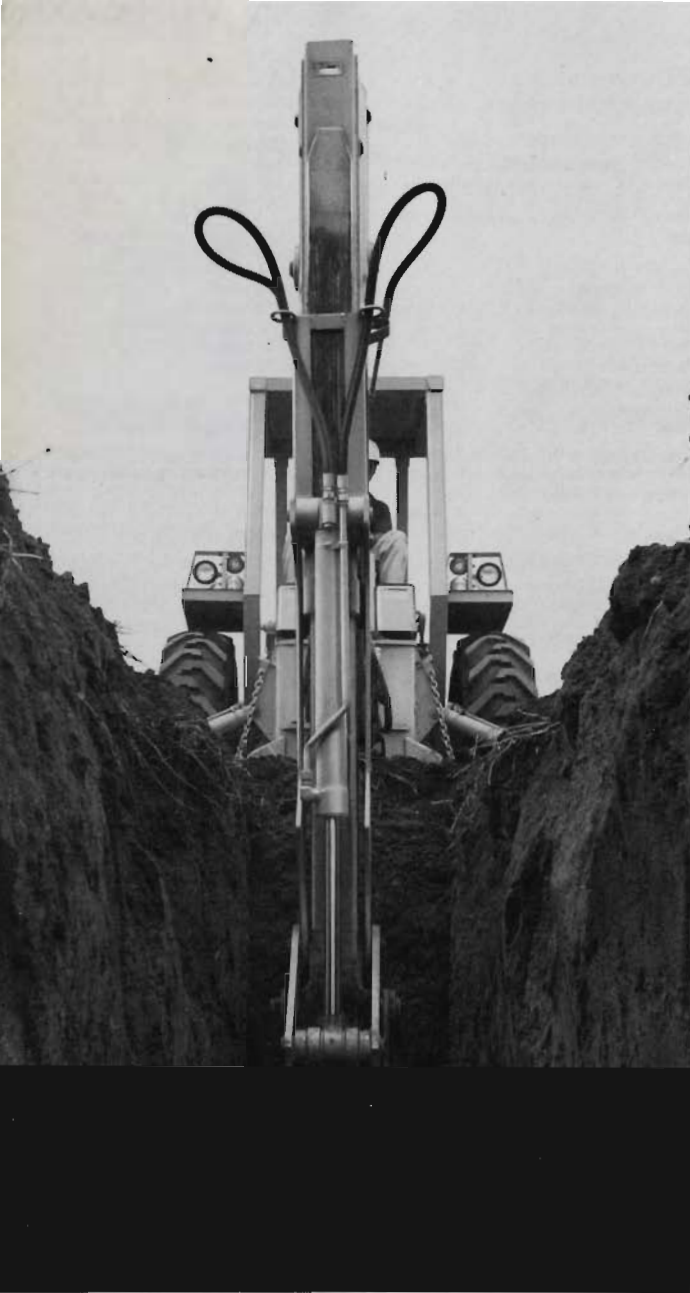
12-1/2'-15-1/2' Extendahoe. Hydra-Guide hydraulic automatic backhoe guidance system. Boom lockout. All tractor and loader optional equipment plus frost point ripper tooth. Dual-lever backhoe controls in lieu of foot swing. Exclusive Case dipper light. Street-cemetery stabilizer pads with rubber pads. Heavy-duty bucket teeth.

Note: All specifications are stated in accordance with IEMC or SAE Standards where applicable.

Important

J I Case Company reserves the right to change these specifications without notice and without incurring any obligation relating to such changes.

Extendahoe, Hydra-Guide, Hydra-Leveling and Construction King are trademarks of J I Case Company.



Extendahoe stretches your digging range.



Mod Hitch system for 3-point hitch and rear-mounted equipment.



2600 lb. loader lift capacity



Hydra-Guide assures a full bucket automatically

Sold and serviced by