

**TIER II CERTIFIED**

580M turbo Series 2 Loader/Backhoe

ENGINE

Model Case 445T/M2 diesel
Type..... 4-stroke, turbocharged
Cylinders 4
Bore/Stroke..... 4.09" x 5.19"
(104 x 132 mm)
Displacement 272 in³ (4.5 L)
Fuel injection..... Direct
Fuel..... Diesel
Fuel filter..... w/water trap
Air intake Cross-flow
Cooling..... Liquid
Engine speeds* (rpm)
Rated speed, full load 2200
Low idle..... 750 - 850
High idle, no load 2380 - 2480
Horsepower
Gross 85 (63 kW) @ 2200 rpm
Net 80 (60 kW) @ 2200 rpm
Maximum torque @ 1400 rpm
Gross..... 251 lb·ft (340 N·m)
Net 246 lb·ft (334 N·m)
Torque rise at rated speed 33%

NOTE: Meets federal emission regulations.

ENGINE COOLING

Radiator
Core type Square wave
Core size area..... 487 in² (.315 m²)
Rows of tubes 4
Fan
Style 7 blade suction
Diameter 19.7" (500 mm)
Ratio 1.1:1
Water pump
Style Integral
Engine oil
Pump..... Deep sump plate cooler
with pressurized
under-piston nozzles
Pump operating angle ratings
Side-to-side Rated 35°
Fore and aft..... Rated 35°
Oil filtration Replaceable,
full-flow cartridge

TIRES

Front
2WD - 11L x 16.1, 10-ply rating
4WD - 12 x 16.5, 8-ply rating
Rear
2/4WD - 17.5L x 24, 10-ply rating
2/4WD - 19.5L x 24, 10-ply rating

POWERTRAIN

Transmission 4-speed
synchromesh with hydraulically
actuated clutches and electric F/R
shuttle control, clutch disconnect
buttons on the transmission shifter
and loader control lever
Gear ratios Forward Reverse
1st..... 5.491 4.550
2nd..... 3.043 2.522
3rd..... 1.584 1.313
4th..... 0.793 0.657
Torque converter
Ratio 3.337
Differential lock..... On-the-go
push-button activation
Front axle
Differential ratio 2.0
Planetary hub ratio 6.0
Total reduction ratio 12.0
Rear axle
Differential ratio 2.333
Planetary hub ratio 6.923
Total reduction ratio 16.153
Service brakes.. Individually applied,
hydraulically actuated,
maintenance-free, self-adjusting,
inboard mounted, wet disc
Disc area 53 in² (.03 m²)
Parking brakes..... Mechanically
applied with electric activation
sensors at each brake
Travel speeds - mph (km/h)
1st 2nd 3rd 4th
Forward..... 3.5..... 6.4..... 12.3..... 24.5
(5.7) (10.3) (19.8) (39.5)
Reverse..... 4.3..... 7.7.... 14.8 29.7
(6.9) (12.4) (23.9) (47.8)

NOTE: Travel speeds at 2293 engine rpm with
19.5 x 24 tires. Speeds decrease with
17.5L x 24 rear tires.

ELECTRICAL

Voltage 12 volts, negative ground
Alternator 90 amp
Battery..... 850 cold-cranking amps
Optional batteries (2) 600
cold-cranking amps
Power plugs..... (2) 30 amps ea.

HYDRAULICS

Pump..... Gear-type,
transmission driven
Main relief pressure
3050 + 50 - 50 psi @ 28.5 gpm
(210 + 3 - 3 bar @ 108 L/min)
Filtration..... 7-micron,
full flow replaceable
cartridge on return line,
condition indicator light for filter
Oil cooler Heavy-duty
Loader flow @ rated engine rpm
28.5 gpm @ 3050 psi
(108L/min @ 210 bar)
Loader control valve Monoblock
single lever control for
lift, tilt and auxiliary hydraulics,
positive hold float and
return-to-dig
Loader auxiliary hydraulics
with full loader flow available
Backhoe flow @ rated engine rpm
28.5 gpm @ 3050 psi
(108 L/min @ 210 bar)
Manual Backhoe Controls
Backhoe Control Valve... Monoblock
open-center, parallel circuits.
Boom and dipper, with pilot operated
checks
Pilot Backhoe Controls
Backhoe Control Valve..... Sectional
closed-center with inlet
compensator and circuits
in parallel
Backhoe auxiliary hydraulics.....
Uni-directional flow, adjustable
variable flow from 0 to 28.5 gpm
(108L/min)

Control operation
Manual... Foot switch activated
PilotButton on left joystick

Bi-Directional flow, variable flow from
0 to 28.5 gpm
(108 L/min) @ rated engine rpm
Control Operation
Manual..... Hand Lever
PilotButtons on Left Joystick

OPERATOR ENVIRONMENT

ROPS/FOPS canopy
Key start
Hydrostatic steering
Non-suspension seat w/180° swivel
Hand and foot throttles
Loader control lever w/push-button activation of differential lock and transmission de-clutch
Backhoe foot-swing w/3 lever control
(2) Accessory power plugs (30 amp)
Anti-vandalism covers (canopy only)
Cup holder
Coat hook w/tether strap (cab only)
Interior rearview mirror
2" (51 mm) retractable seat belt
Storage compartment w/lid
Left side storage tray

INSTRUMENTATION

Gauges
Engine water temperature
Converter oil temperature
Fuel
Tachometer/hourmeter
Voltmeter
Warning lights
Air cleaner restriction
Alternator
Engine oil pressure
Hydraulic oil filter bypass
Parking brake engagement
Rear axle fluid temperature sensing system
Low fuel
Audible alarms
Coolant temperature
Engine oil pressure
Parking brake engagement
Shuttle engagement/seat position
Backup alarm
Turn signal indicators
Horn

TURNING DIAMETER

2WD
Brakes on..... 21'3" (6.48 m)
Brakes off..... 24'7" (7.49 m)
4WD – engaged
Brakes on..... 22'1" (6.72 m)
Brakes off..... 28'3" (8.62 m)
4WD – disengaged
Brakes on..... 22'0" (6.70 m)
Brakes off..... 25'3" (7.70 m)

NOTE: Turning diameter dimensions curb to curb w/19.5L x 24 rear tires and 82 (2.08 m) generalpurpose or 4 in 1 bucket..

OPERATING WEIGHTS

Lightest Configuration
Unit equipped with 2WD, ROPS canopy, non-suspension seat, 82" (2.08 m) general purpose loader bucket, 24" (610 mm) general purpose backhoe bucket, standard dipperstick, 17.5L x 24 rear tires, 11L x 16.1 front tires, single battery, standard cast stabilizer pads, no operator..... 13,359 lb (6060 kg)

Heaviest Configuration
Unit equipped with 4WD, cab, suspension seat, 82" (2.08 m) 4 IN 1® loader bucket, 24" (610 mm) general purpose backhoe bucket, Extendahoe® dipperstick, 19.5L x 24 rear tires, 12L x 16.5 front tires, dual batteries, flip stabilizer pads, no operator..... 16,510 lb (7489 kg)

Add-on weights

Cab (over canopy) ... +454 lb (206 kg)
Counterweights..... +440 lb (200 kg)
+900 lb (408 kg)
Extendahoe® +430 lb (195kg)
4WD w/driveshaft guard +283 lb (128 kg)

SERVICE CAPACITIES

Fuel tank 31.4 gal (119 L)
Optional tank 40 gal (151 L)
Hydraulic system
Total 28.0 gal (106 L)
Total w/Extendahoe® 29.5 gal (111.7 L)
Reservoir w/filter.. 14.5 gal (54.9 L)
Reservoir w/o filter... 14.0 gal (53 L)
Transmission
2WD Total system .. 19.5 qt (18.5 L)
4WD Total system .. 22.0 qt (20.8 L)
4WD Front axle
Differential..... 5.8 qt (5.5 L)
Planetaries (each)..... 0.7 qt (0.66 L)
Rear axle
Differential..... 15.0 qt (14.2 L)
Planetaries (each)..... 1.6 qt (1.5 L)
Engine oil w/filter 14.4 qt (13.6 L)
Cooling system
w/heater 17.8 qt (16.8 L)
w/o heater..... 17.0 qt (16.1 L)
Window washer reservoir..... 2.5 qt (2.36 L)

LOADER

Single-lever control for lift and tilt
Positive hold float
Return-to-dig
Automatic self-leveling
In-line, reverse linkage
Dual parallel dump cylinders
Clutch disconnect button on loader control and shift levers
Bucket position indicator

Loader Bucket Sizes

General Purpose Bucket

Width	Weight	Struck	Heaped
82"	686 lb*	0.87 yd ³	1.03 yd ³
(2.08 m)	(311 kg)	(0.67 m ³)	(0.79 m ³)
93"	933 lb*	1.07 yd ³	1.25 yd ³
(2.36 m)	(423 kg)	(0.82 m ³)	(0.96 m ³)

4 IN 1® Bucket

Width	Weight	Struck	Heaped
82"	1,462 lb	0.85 yd ³	1.04 yd ³
(2.08 m)	(663 kg)	(0.65 m ³)	(0.80 m ³)

NOTE: *Add 103 lb (47 kg) to 82 (2.08 m) general purpose bucket for bolt-on cutting edge.

BACKHOE

Over-center design
Cast, ductile iron boom, and swing tower
Open-center hydraulics - Pro Control System
15,700 lb-ft (21,297 N-m) swing torque
Foot-swing w/3 lever control
Wing stabilizers w/cleated dirt pad

Backhoe Bucket Sizes

General Purpose Trenching Buckets

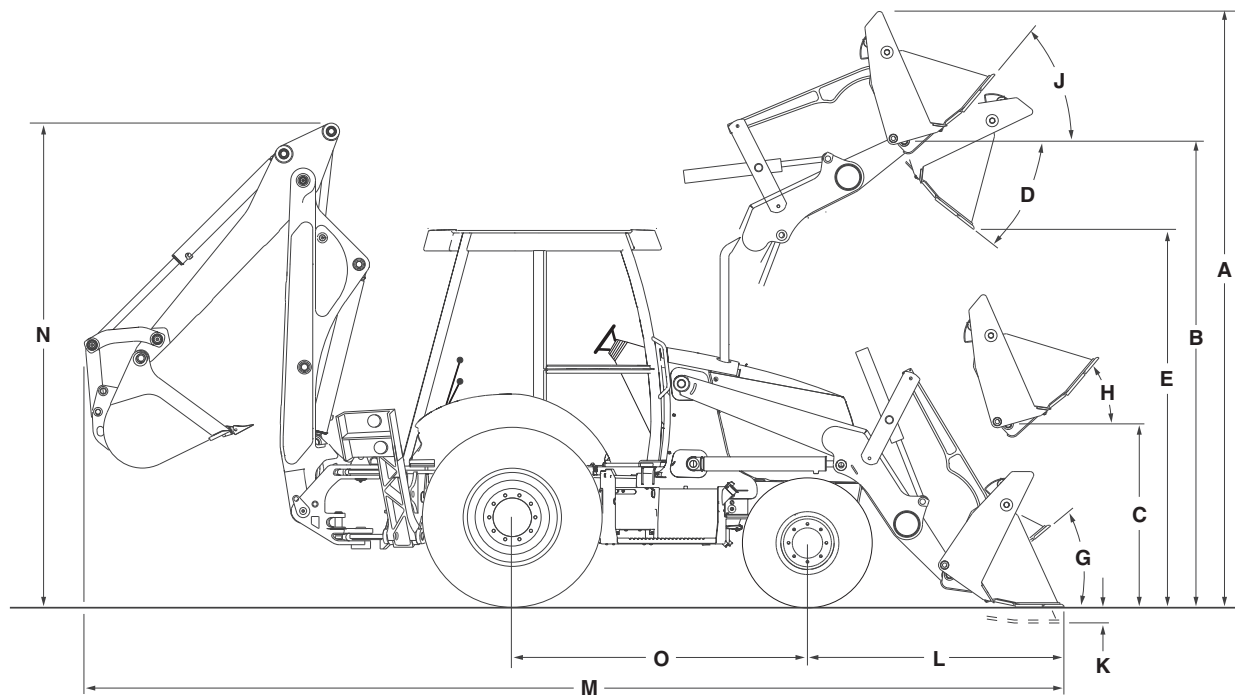
Width	Weight	Heaped
18"	255 lb	4.7 ft ³
(457 mm)	(116 kg)	(0.13 m ³)
24"	300 lb	6.26 ft ³
(610 mm)	(136 kg)	(0.17 m ³)
30"	380 lb	7.83 ft ³
(762 mm)	(172 kg)	(0.22 m ³)

Universal Buckets

Width	Weight	Heaped
12"	290 lb	3.40 ft ³
(305 mm)	(132 kg)	(0.10 m ³)
16"	346 lb	3.60 ft ³
(406 mm)	(157 kg)	(0.10 m ³)
18"	350 lb	5.30 ft ³
(457 mm)	(159 kg)	(0.15 m ³)
24"	413 lb	7.70 ft ³
(610 mm)	(187 kg)	(0.22 m ³)
30"	475 lb	10.20 ft ³
(762 mm)	(215 kg)	(0.29 m ³)
36"	535 lb	12.70 ft ³
(914 mm)	(243 kg)	(0.36 m ³)

High Capacity Buckets

Width	Weight	Heaped
24"	450 lb	8.50 ft ³
(610 mm)	(204 kg)	(0.24 m ³)



LOADER DIMENSIONS

General Purpose Bucket* 4 IN 1® Bucket

A. Overall operating height – fully raised	13'8" (4.17 m)	14'3" (4.34 m)
Height to –		
B. Bucket hinge pin fully raised.....	11'2" (3.4 m).....	11'2" (3.4 m)
C. Bucket hinge pin @ SAE carry	12.7" (323 mm).....	14.6" (372 mm)
D. Dump angle @ full height.....	46°	45°
E. Dump clearance @ full height, 45° dump –		
Bucket.....	8'8" (2.64 m).....	8'11" (2.72 m)
Clam open.....	NA	9'8" (2.95 m)
F. Dump reach @ full height, 45° dump –		
Bucket	28.2" (717 mm).....	27.7" (704 mm)
Clam open.....	NA	14.2" (360 mm)
Bucket rollback –		
G. @ groundline	40°	40°
H. @ SAE carry	45°	45°
J. @ full height.....	Adjustable.....	Adjustable
K. Digging depth below grade –		
Bucket flat.....	7.8" (199 mm).....	7.1" (180 mm)
Clam open (dozing)	NA.....	4.4" (111 mm)
L. Reach from front axle centerline – bucket on ground	77.6" (1.91 m).....	75.2" (1.85 m)
Lift capacity to full height	6,182 lb (2804 kg)	5,514 lb (2501 kg)
Breakout force –		
Lift cylinders.....	9,164 lbf (40 760 N)....	8,766 lbf (39 600 N)
Dump cylinders	9,480 lbf (42 170 N)..	10,325 lbf (45 820 N)
Bucket cutting edge width.....	82" (2.08 m)/93" (2.36 m).....	82" (2.08 m)
Maximum grading angle	116°	116°
Maximum clam opening.....	NA	38.3" (972 mm)
Moldboard height	NA	36.8" (934 mm)
Raising time to full height	5.3 sec.....	5.3 sec
Bucket dumping time.....	1.1 sec.....	1.1 sec
Lowering time –		
Power down	2.4 sec.....	2.4 sec
Return-to-dig.....	3.2 sec.....	3.2 sec
Clam –		
Open time	NA.....	2.3 sec
Close time	NA.....	3.1 sec

NOTE: Loader dimensions taken with 4WD,
19.5L x 24 rear tires and 82" (2.08 m) general
purpose bucket *without bolt-on cutting edge.

DIMENSIONS

		Standard Backhoe	Extendahoe®	
			Retracted	Extended
M.	Overall transport length –			
	General purpose bucket.....	23'2" (7.07 m)	23'2" (7.07 m)	NA
	4 IN 1® bucket.....	23'1" (7.05 m)	23'1" (7.05 m)	NA
	Overall transport width.....	7'2" (2.18 m)	7'2" (2.18 m)	NA
	Height –			
	To top of canopy.....	8'9" (2.67 m)	8'9" (2.67 m)	8'9" (2.67 m)
	To top of cab.....	8'11" (2.72 m)	8'11" (2.72 m)	8'11" (2.72 m)
	To top of exhaust stack.....	8'8" (2.64 m)	8'8" (2.64 m)	8'8" (2.64 m)
N.	Transport.....	11'3" (3.42 m)	11'7" (3.53 m)	11'7" (3.53 m)
	Ground clearance at backhoe frame.....	14.8" (376 mm)	14.8" (376 mm)	14.8" (376 mm)
	Angle of departure.....	20°	20°	20°
	Front wheel tread –			
	2WD.....	67.5" (1.71 m)	67.5" (1.71 m)	67.5" (1.71 m)
	4WD.....	67.7" (1.72 m)	67.7" (1.72 m)	67.7" (1.72 m)
	Width across tires			
	17.5L x 24.....	81.7" (2.074 m)	81.7" (2.074 m)	81.7" (2.074 m)
	19.5L x 24.....	81.4" (2.67 m)	81.4" (2.67 m)	81.4" (2.67 m)
O.	Wheelbase –			
	2WD.....	84" (2.13 m)	84" (2.13 m)	84" (2.13 m)
	4WD.....	84.5" (2.15 m)	84.5" (2.15 m)	84.5" (2.15 m)

CYLINDERS

	Bore Diameter	Rod Diameter	Stroke
Loader			
Lift (2).....	3.25" (82.6 mm)	1.75" (44.5 mm)	30.2" (766 mm)
Bucket (2).....	2.75" (69.9 mm)	1.5" (38.1 mm)	20.6" (522 mm)
4 IN 1® clam (2).....	3.0" (76 mm)	1.75" (44.5 mm)	9.1" (231 mm)
Backhoe			
Boom.....	4.5" (114 mm)	2.25" (57.2 mm)	38.6" (981 mm)
Dipperstick.....	4.25" (108 mm)	2.25" (57.2 mm)	27.0" (686 mm)
Bucket.....	3.25" (82.6 mm)	2.25" (57.2 mm)	34.3" (872 mm)
Extendahoe®.....	3.0" (76 mm)	1.75" (44.5 mm)	42.0" (1.07 m)
Swing (2).....	3.75" (95.3 mm)	2.0" (50.8 mm)	11.5" (292 mm)
Stabilizer (2).....	4.0" (101.6 mm)	2.0" (50.8 mm)	21.8" (553 mm)
Steering			
2WD.....	2.75" (69.9 mm)	1.5" (38.1 mm)	6.7" (170 mm)
4WD.....	2.48" (63 mm)	1.5" (38.1 mm)	9.53" (242 mm)

BACKHOE LIFT CAPACITIES

Boom Lift	Standard Backhoe		Retracted		Extended	
	Distance from swing pivot (m)	Backhoe lift capacity - lb (kg)	Distance from swing pivot (m)	Backhoe lift capacity - lb (kg)	Distance from swing pivot (m)	Backhoe lift capacity - lb (kg)
+16' (4.87 m)					12'7" (3.84)	810 (367)
+14' (4.27 m) ... 8'3" (2.52)	1,950 (885)		9'6" (2.89)	1,280 (581)	14'8" (4.47)	1,400 (635)
+12' (3.66 m) .. 10'9" (3.28)	2,700 (1225)		11'10" (3.61)	1,940 (880)	16'2" (4.93)	1,430 (649)
+10' (3.05 m) .. 12'7" (3.84)	2,700 (1225)		13'5" (4.09)	2,200 (998)	17'3" (5.26)	1,540 (699)
+8' (2.44 m) 13'6" (4.11)	2,750 (1247)		14'7" (4.45)	2,220 (1007)	18'1" (5.52)	1,610 (730)
+6' (1.83 m) 14'5" (4.40)	2,730 (1238)		15'3" (4.65)	2,260 (1025)	18'8" (5.69)	1,620 (735)
+4' (1.22 m) 14'9" (4.50)	2,720 (1234)		15'10" (4.82)	2,290 (1039)	19'0" (5.79)	1,660 (753)
+2' (0.61 m) .. 14'11" (4.55)	2,680 (1216)		16'0" (4.88)	2,290 (1039)	19'1" (5.82)	1,700 (771)
Ground Level 14'8" (4.47)	2,490 (1129)		15'11" (4.85)	2,270 (1030)	18'10" (5.74)	1,730 (785)
-2' (0.61 m)..... 14'3" (4.35)	2,440 (1107)		15'7" (4.75)	2,260 (1025)	18'6" (5.64)	1,720 (780)
-4' (1.22 m)..... 13'4" (4.06)	2,440 (1107)		14'10" (4.52)	2,240 (1016)	17'10" (5.43)	1,730 (785)
-6' (1.83 m)..... 12'0" (3.66)	2,440 (1107)		13'10" (4.21)	2,270 (1030)	17'0" (5.18)	1,740 (789)
-8' (2.44 m)..... 10'2" (3.10)	2,500 (1134)		12'6" (3.81)	2,350 (1066)	15'9" (4.80)	1,780 (807)
-10' (3.05 m)..... 7'0" (2.13)	2,780 (1261)		10'4" (3.15)	2,350 (1066)	14'1" (4.30)	1,870 (848)
-12' (3.66 m).....					11'9" (3.58)	2,040 (925)
-14' (4.27 m)					8'1" (2.47)	2,610 (1184)
Dipper Lift						
+14' (4.27 m)					13'4" (4.06)	2,120 (962)
+12' (3.66 m) 9'9" (2.97)	3,950 (1792)		10'8" (3.25)	3,430 (1556)	14'2" (4.32)	2,210 (1002)
+10' (3.05 m) .. 10'4" (3.15)	3,690 (1674)		11'1" (3.38)	3,170 (1438)	14'6" (4.42)	2,200 (998)
+8' (2.44 m) 10'2" (3.10)	3,750 (1701)		11'0" (3.35)	3,240 (1470)	14'5" (4.40)	2,160 (980)
+6' (1.83 m) 9'4" (2.84)	4,100 (1860)		10'2" (3.10)	3,610 (1637)	13'10" (4.21)	2,230 (1012)
+4' (1.22 m) 7'6" (2.29)	4,710 (2136)		8'2" (2.49)	4,290 (1946)	12'10" (3.91)	2,420 (1098)

NOTE: Stated figures apply straight to the rear of prime mover. Equipped with 24" (610 mm) general purpose trenching bucket and links.
For heavy-duty universal bucket and coupler, deduct 175 lb (79 kg) from each weight.

BACKHOE OPERATIONAL DATA

	Standard Backhoe		Retracted		Extended	
Digging depth –						
Maximum	14'3" (4.34 m)		14'10" (4.52 m)		18'3" (5.56 m)	
2' (610 mm) flat bottom	14'2" (4.32 m)		14'8" (4.47 m)		18'2" (5.54 m)	
8' (2.44 m) flat bottom	13'3" (4.04 m)		13'9" (4.19 m)		17'6" (5.33 m)	
Overall reach from –						
Rear axle centerline	21'5" (6.53 m)		22'0" (6.70 m)		25'5" (7.75 m)	
Swing pivot	17'10" (5.44 m)		18'5" (5.61 m)		21'10" (6.65 m)	
Loading height	11'2" (3.40 m)		11'5" (3.48 m)		13'3" (4.04 m)	
Loading reach – dipper retracted	8'9" (2.67 m)		8'8" (2.64 m)		11'6" (3.50 m)	
Swing arc	180°		180°		180°	
Bucket rotation –						
#1 position	170°		170°		170°	
#2 position	170°		170°		170°	
Stabilizer spread – operating	9'5" (2.87 m)		9'5" (2.87 m)		9'5" (2.87 m)	
Digging force –						
Bucket cylinder	11,212 lbf (49 873 N)		11,212 lbf (49 873 N)		11,212 lbf (49 873 N)	
Dipper cylinder	7,049 lbf (31 356 N)		6,686 lbf (29 741 N)		4,884 lbf (21 725 N)	
	w/bucket @ 46°		w/bucket @ 50°		w/bucket @ 55°	
Leveling angle						
maximum slope that backhoe						
will make vertical cut	12°		12°		12°	

STANDARD EQUIPMENT

OPERATOR'S COMPARTMENT

See page 2

ENGINE

Case 445T/M2 diesel
Automatic fan belt tensioner
Integral engine oil cooling
Fuel filter w/water trap
Dual element air cleaner
90 amp alternator
850 CCA 12-volt battery
Heavy-duty radiator w/deaeration bottle
Spark-arresting muffler

LOADER

See page 2

OPTIONAL EQUIPMENT

OPERATOR'S COMPARTMENT

Cab with –
Heater
Defroster
Dome light - door activated w/switch
Wipers, front and rear
Tinted glass
Floor mat
Side window partial hold open
Inside release for side windows
Operator Convenience Package
Tilt wheel
Windshield washer w/adjustable nozzles (front & rear)
Sun visor
Deluxe Cab Package
Operator Convenience Package PLUS
Vinyl-covered interior
Radio-ready kit w/antenna and speakers
Reduced sound level to 72 dB(A)
Vinyl or cloth-covered mechanical suspension seat
Air Ride suspension seat
3" (76 mm) retractable seat belt
Cab air-conditioning, 100% filtered air, in-cab filter access, 8 adjustable roof vents, 2 floor vents, w/heater
Ride Control
Cab, right door

BACKHOE

See page 2

POWERTRAIN

2WD
4F/4R Power shuttle synchromesh transmission
Torque converter
Transmission de-clutch
Electro-hydraulic differential lock
Hydrostatic steering
Wet disc brakes

HYDRAULICS

2-spool loader control valve
6-spool backhoe control valve
Heavy-duty oil cooler

Canopy Convenience Package
Front windshield w/wiper & washer
85 dB(A) sound
Floor mat
Sun visor

LOADER

Hydraulic front quick coupler
Attachment auxiliary hydraulics
3 spool valve hydraulics w/control
Buckets (see page 2)

BACKHOE

Case coupler
Attachment auxiliary hydraulics
Extendahoe®
Two-lever control
Joystick Actuated Pilot Operated Control System
Fingertip Proportional
Electrohydraulic stabilizer controls.
Thumb operated Proportional
Electrohydraulic Extendahoe control
Thumb operated horn button
Thumb operated Auxiliary Hydraulic Control
Infinitely Adjustable Towers
In-Cab Switchable "Excavator to Backhoe" control pattern change
Stabilizer pads
Flip-over
Rubber pad

OTHER

Forward tilt engine hood
Replaceable, molded front bumpers
Front/rear tie downs
Reflective logos
Lights - Cab and Canopy
2 Rear tail/stop
2 Front flashers/turn
2 Rear flashers/turn
Cab only
4 Front & 4 rear adjustable halogen lights (55 w)
Canopy only
2 Front & 2 rear adjustable halogen lights (55 w)

Front counterweights
440 lb (200 kg)
900 lb (408 kg)

ENGINE

Cold weather grid heater starting aid
Dual, 12-volt, 600CCA batteries
Fuel tank, 40 gal (151 L)
Exhaust aspirated air cleaner

POWERTRAIN

4WD w/outboard planetary drive, on-the-go push-button activation and 12 x 16.5 front tires

HYDRAULICS

Auxiliary backhoe uni-directional hydraulics
Auxiliary backhoe bi-directional hydraulics

OTHER

Outside breakaway mirror
17.5L x 24 rear tires
19.5L x 24 rear tires
Tool box
Special paint
Lights - canopy
Additional 2 front and 2 rear halogen lights (55 w)

CASE CONSTRUCTION EQUIPMENT CONTACT INFORMATION

NORTH AMERICA/MEXICO:

700 STATE STREET
RACINE, WISCONSIN 53404

LATIN AMERICA:

AV. GENERAL DAVID SARNOFF 2237
32210 – 900 CONTAGEM – MG
BELO HORIZONTE BRAZIL

EUROPE/AFRICA/MIDDLE EAST:

18, PLACE DES NYMPHEAS
ZI PARIS NORD 11 95915
ROISSY CDG CEDEX FRANCE

ASIA PACIFIC:

31-67 KURRAJONG ROAD
ST. MARY'S
NEW SOUTH WALES 2760 AUSTRALIA

NOTE: All specifications are stated in accordance with SAE Standards or Recommended Practices, where applicable.

Form No. CCE9030304

Replaces Form No. CE 251-10-00

IMPORTANT: Case, LLC reserves the right to change these specifications without notice and without incurring any obligation relating to such change. Case, LLC does not warrant the safety or reliability of attachments from other manufacturers.

Visit us on the Web at:
<http://www.casece.com>
Printed in U.S.A.

© 2003 CASE, LLC.
All Rights Reserved.

A Brand of CNH

CASE