

**CASE**

**L SERIES 2  
LOADER/BACKHOES**



# L Series 2

## The Next Level of Performance... From The Leader in Backhoe Technology

There's a reason more than twice as many Case loader/backhoes have been sold throughout the world than the nearest competitor...simply stated, it's performance. We've gotten there by being innovative and providing the technology you've needed and asked for.

And now, our L Series lineup has been refined to provide you more power and comfort. The new L Series 2 loader/backhoes have higher horsepowers than any 580 in the past. And if you equip your Series 2 with our new air-suspension seat and Ride Control options, you couldn't have a more comfortable day on the job.

With over thirty great new standard and optional features, Series 2 will undoubtedly set the pace again for the competition. There's also four models to choose from with the addition of the new 580L turbo.

When you need hard-working dependable equipment, rely on the maximum productivity and comfort of an L Series 2 loader/backhoe from Case. Turn the page to find out which L Series 2 is right for your next big job.



### 580L

75 Gross Horsepower  
(56 kW)  
14'3" Dig Depth  
(4.34 m)



### 580Lturbo

85 Gross Horsepower  
(63 kW)  
14'3" Dig Depth  
(4.34 m)







## Table of Contents

Operator Environment .....	4
Powertrain .....	6
Loader Performance .....	8
Backhoe Performance .....	10
580L and 580L turbo .....	12
580 Super L .....	14
590 Super L .....	16
Product Support .....	18
Attachments .....	20
Specifications .....	21
Standard/Optional Equipment .....	22

### 580 Super L

95 Gross Horsepower  
(71 kW)  
14'5" Dig Depth  
(4.39 m)



### 590 Super L

100 Gross Horsepower  
(75 kW)  
16'4" Dig Depth  
(4.98 m)



## L Series 2

# Strap Yourself Into Comfort!

Discover the difference that 40 plus years in the business makes...you won't find more available standard and optional features that provide as much comfort on any other line of loader/backhoes!

With L Series 2 you get a clean, uncluttered environment with ergonomically positioned controls to enhance operation and visibility. Electro-hydraulic push-button activation of the diff-lock, transmission disengage and optional Powershift kickdown on 4WD allows you on-the-go engagement for commanding ease of control. And if your Series 2 is equipped with the optional Powershift transmission, changing gears is as easy as twisting the selector on the F-N-R shuttle lever.

If you perform a considerable amount of loader work such as stockpiling, it's important to have a smooth forward/reverse shuttle so you remain comfortable all day long. Series 2 transmissions feature modulation for the smoothest forward/reverse motion on the market. Our overcenter backhoe design also promotes better balance for a smoother ride because its weight is transferred forward. Order the optional Ride Control for an even smoother ride while minimizing loader bucket spillage. And for the ultimate in operating comfort, have your Series 2 equipped with an air-suspension seat\*.

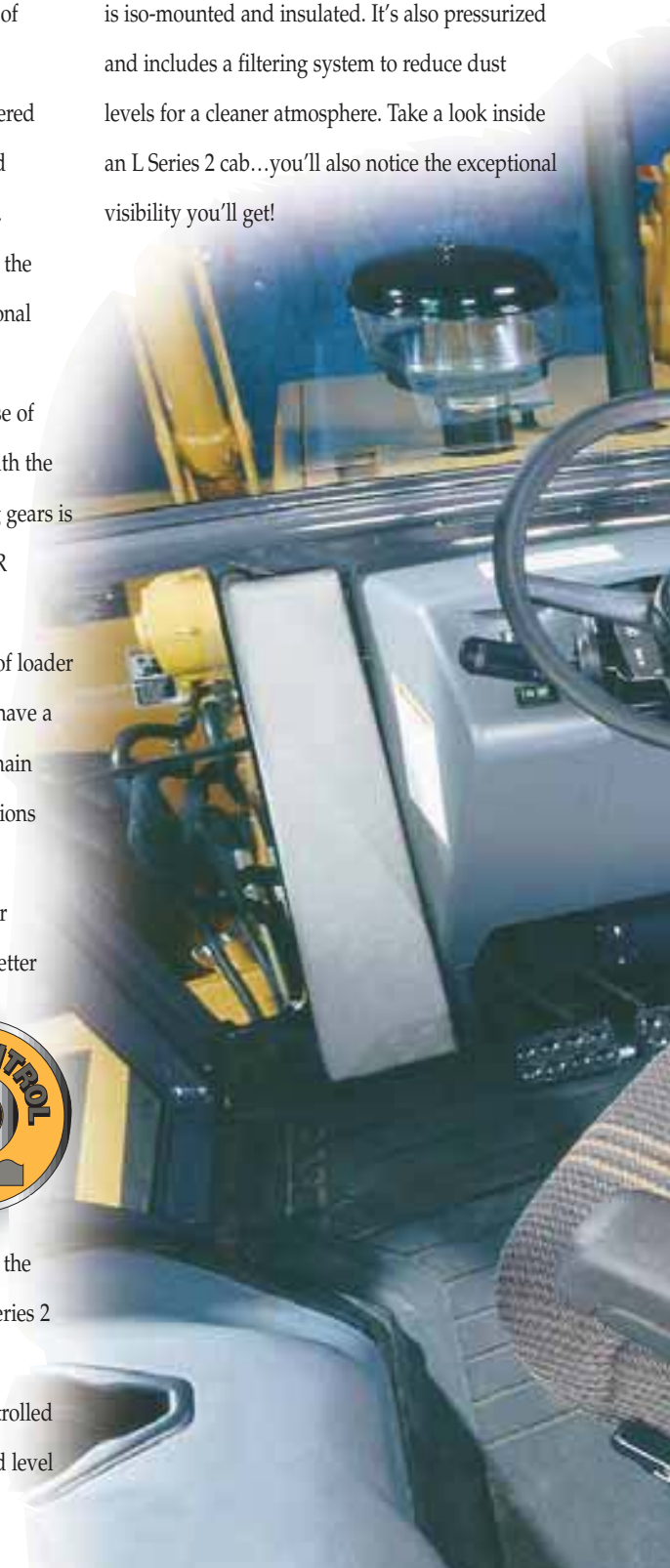
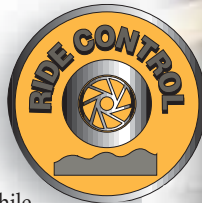
A Series 2 cab provides you with a controlled environment that registers the lowest sound level

of any 580 to date – 75 db(A) with the Cab Convenience Package option, (see itemized list, next page). To subdue noise and vibration, the cab is iso-mounted and insulated. It's also pressurized and includes a filtering system to reduce dust levels for a cleaner atmosphere. Take a look inside an L Series 2 cab...you'll also notice the exceptional visibility you'll get!

# OPERATOR ENVIRONMENT

## QUICK FACTS

- ✓ *Optional Ride Control*
- ✓ *Optional Air-Suspension Seat*
- ✓ *Accessory Power Plugs*
- ✓ *Cab Convenience Package*
- ✓ *Exceptional Visibility*





**The optional Cab Convenience Package includes:**

- 75 db(A) sound level
- Vinyl-covered cloth interior
- Radio-ready kit with speakers and antenna
- Additional storage tray behind the RH console
- Front and rear window washers with adjustable spray nozzles
- Sunvisor



L Series 2's with cabs can be equipped with our air-suspension seat to help smooth out the roughest terrain. This seat comes equipped with push-button height adjust, dampening shock, lumbar support, horizontal isolators and adjustable armrests for a customized fit. For improved visibility into the trench, this seat can be positioned 3/4" (19 mm) left or right of center. A non-suspension, or mechanical-suspension seat is also available.



Accessory power plugs for a cellular phone, CB and similar items are standard equipment on both ROPS canopy and cab units.

**Instrumentation and controls on the right-hand console can easily be seen and accessed from either operating position.**

## L Series 2

# POWERTRAIN

## QUICK FACTS

- ✓ Emission Certified Engines
- ✓ Higher Horsepowers
- ✓ Powershift Option
- ✓ Push-Button Diff-Lock
- ✓ Power-Shuttle Modulation

## Powerful, Smooth and Efficient

L Series 2 loader/backhoes feature higher horsepowers than any previous 580. This increase in power assures you can handle heavier loads and rough terrain without bogging down.

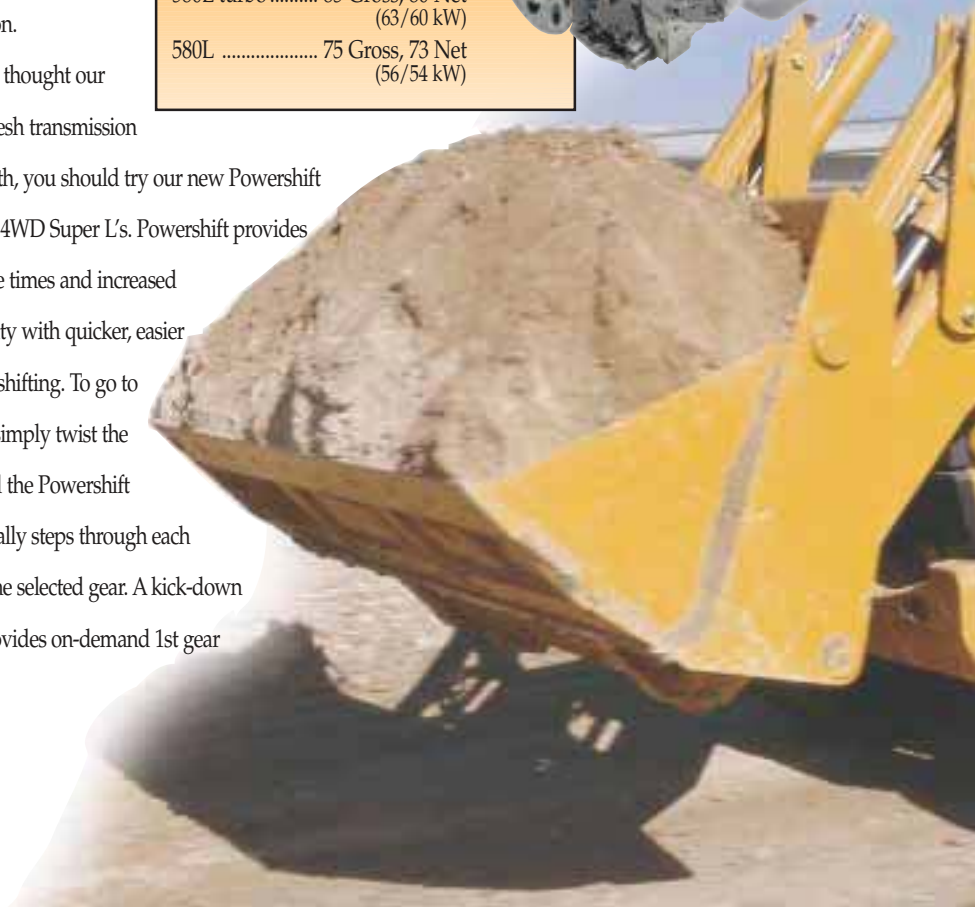
Advancements to our line of Family I engines include an in-line fuel injection pump for precision metering, increased cooling capacity, a larger air cleaner and larger muffler. Additionally, Super L's and the 580L turbo now feature small body turbochargers for exceptional response at lower speeds. The 580 Super L with Powershift transmission and the 590 Super L have a viscous fan drive that kicks in only when it's needed, resulting in maximum net horsepower for handling the toughest tasks. You get all this plus emission certification.

If you thought our synchromesh transmission was smooth, you should try our new Powershift option for 4WD Super L's. Powershift provides faster cycle times and increased productivity with quicker, easier control of shifting. To go to any gear, simply twist the shifter and the Powershift automatically steps through each range to the selected gear. A kick-down button provides on-demand 1st gear

push-power for digging into tough piles. When shuttling into reverse from kick-down, Powershift automatically puts you in 2nd gear for faster cycling and stays in 2nd if shuttled to forward.

### Power to Handle Your Toughest Jobs

590 Super L.....	100 Gross, 99 Net (75/74 kW)
580 Super L.....	95 Gross, 90 Net (71/67 kW)
580L turbo .....	85 Gross, 80 Net (63/60 kW)
580L .....	75 Gross, 73 Net (56/54 kW)





A clutch disconnect button on the loader control lever disengages the transmission to concentrate engine power on the hydraulics for faster loading cycles. There's also replaceable, rubber bumpers on the nose cone for dump truck protection.



For ground-grabbing traction in slippery conditions, you can lock the differential on any Series 2 by depressing the engagement button on the loader control lever.



Both the shifter for the Powershift transmission and forward/reverse shuttle are on the same lever for smooth, quick and easy control of shuttling and maneuvering.



Series 2 Loader/Backhoes feature hydraulically actuated, maintenance-free wet-disk brakes for positive stopping power. Brakes can be operated individually for pivot turns or simultaneously for normal braking. If equipped with Powershift, you get automatic 4WD braking when in 2WD.



## L Series 2

# LOADER PERFORMANCE

### QUICK FACTS

- ✓ Reverse, In-Line Dump Linkage
- ✓ Transmission Disengagement
- ✓ Return-to-Dig
- ✓ Single Lever Auxiliary Control
- ✓ Automatic Self-Leveling

## More Built-In Performance For Super

No doubt, you've got to have superior push-power, exceptional breakout force, and a host of other rapid-cycle features to stay ahead of your deadline...feature-for-feature, Case loaders have more built-in performance than anything on the market!

Operating a front-end loader has never been easier! All loader functions – lift, tilt, return-to-dig and float, including auxiliaries for hydraulically driven attachments – are controlled with one lever. With push-button control of the transmission disconnect, electro-hydraulic diff-lock and Powershift kickdown on the same control lever, you've got true fingertip precision. You also get automatic self-leveling throughout the lift cycle to maintain control of the load. For maximum bucket load retention, have your Series 2 equipped with Ride Control.

Ask any engineer and they'll tell you the most powerful function of a hydraulic cylinder is the extension of the rod. That's the whole idea behind our reverse dump linkage.

When you break out of a pile, the loader bucket cylinder rods extend...providing superior breakout performance. In comparison, some competitive models do just the opposite – the cylinder rod retracts to curl the loader bucket.

What's the quickest function of a hydraulic cylinder? Ask that same engineer and the answer will be the retraction of the cylinder rod. When you dump the bucket on a Case loader, the cylinders retract...providing a quick, hurling action for thorough bucket cleanout.



The 3-axis loader control lever operates the same functions as the standard loader control lever, with the addition of the optional front-end hydraulics. The optional Powershift transmission kickdown button is also shown.



The standard loader control lever operates the lift, tilt, return-to-dig, float, transmission disconnect and electro-hydraulic diff-lock.





# ior Productivity

As you look down the sloped hood of a Series 2, you'll notice that you've got an exceptionally clean view of the loader bucket because the dump linkage is in line with the loader arms. Some competitive models offer only one dump cylinder mounted between the loader arms... which obstructs visibility and can limit breakout force.

An added benefit of the dual in-line linkage is 4-point bucket mounting. This 4-point support resists twisting forces for exceptional durability.

An assortment of loader buckets are available for a multitude of applications, including general purpose, multi-purpose 4 IN 1® and scrap grapple buckets. All Case buckets feature lift hooks and pre-drilled holes for reversible, bolt-on cutting edges.



The optional hydraulic quick-coupler allows you to make quick and simple attachment changes from the operator's seat to maximize your productivity.



## L Series 2

# BACKHOE PERFORMANCE

### QUICK FACTS

- ✓ Open-Center "Feel"
- ✓ Precision Multi-Function Control
- ✓ Exceptional Visibility
- ✓ Cast Boom Strength
- ✓ Exclusive 5-Year Warranty



Increase the versatility of your Series 2 with backhoe attachment hydraulics. Auxiliaries for Super L's feature low- and high-flow range settings with foot pedal activation for a variety of attachment requirements, and plumbing is extended out to the dipperstick for convenient hookup. Backhoe controls are available in 2- or 3-stick configurations.



# Massive Power With Precision Control

For superior productivity and durability, Case backhoes offer you unparalleled performance backed by 9 generations of machine evolution and millions of operating hours in all degrees of environments.

You may not know it, but we're the only manufacturer that offers the strength of a cast ductile iron backhoe with a full, 5-year replacement warranty.

Casting our backhoes with ductile iron evenly distributes load stress throughout its length, while allowing a slimmer design for superior visibility both into the trench and while swung in either direction.

To say that a Series 2 backhoe is an extension of your hand wouldn't be exaggerating. Our open-center hydraulics provide the ability to sense and feel objects in precision digging operations. This system allows a smooth, fast response to multi-function control movement for superior cycle time. And, both crowd and swing power provide the muscle you need to rip through the toughest ground or backfill with the hoe.



Series 2 Loader/Backhoes have exceptional craning power even with the Extendahoe® dipperstick extended.



For extended straight wall trenching and improved load retention, Series 2 Super L's now feature 200° bucket rotation.

## 5 Year Warranty

Case is the only manufacturer to offer a full, 5-Year Replacement Warranty on its backhoe.

**580L**  
**580L**  
**turbo**

# 580... The Machine That Set the

You don't have to look too far to see how many others have followed the path set by the 580. This is the machine that set the pace in innovative backhoe design and productivity. As could be expected, others have tried to differentiate their backhoes in the market by offering variations of our exclusive, patented designs...but none have equalled them. And now, Series 2 provides you with the next generation of productivity with higher horsepower, increased capacities and all-around comfort.

What's important to you is important to us. You wanted a 580 with more power, now you have two to choose from. The 580L has 75 gross horsepower (56 kW) and the all-new 580L turbo possesses the responsiveness of turbocharging with 85 gross horsepower (63 kW).

Both of these thoroughbreds feature our patented, 14' overcenter backhoe with a total bucket breakout force of 11,212 pounds (49 873 N), an increase of 236 pounds of force over the previous L Series (1050 N). For greater dig depth, the Extendahoe® dipperstick gets you down to 18'3" (5.56 m). This option can also save you time by maximizing the "flat-bottom" trench length. A 440 lb (200 kg) counterweight is standard with the Extendahoe dipperstick, or a 900 lb (408 kg) weight can be added. Some competitive models require as much as 1,250 lbs (567 kg) of weight to counter their standard dipperstick alone. This can

## QUICK FACTS

- ✓ 75/85 Gross Horsepower (56/63 kW)
- ✓ 14'3" Backhoe Dig Depth (4.34 m)
- ✓ 5,293 lb Loader Lift Capacity (2401 kg)
- ✓ 15,151 lb Heaviest Configuration (6872 kg)



To increase the versatility of your Series 2, have it equipped with auxiliary hydraulics for the loader, backhoe and hand-held attachments.



# Standard for All Others

increase fuel consumption and add stress to front-end componentry. Series 2 backhoes don't require offsetting weight to help balance them because of their overcenter geometry and slim cast ductile iron strength.



When in the transport position, the overcenter backhoe design provides a higher angle of departure and shorter overall length because the backhoe is tucked in towards the tractor. This means the bucket, or any other attachment, is higher off the ground to allow improved clearance in rough terrain, while promoting a smooth ride which is especially important when carrying awkward loads.



# 580 Super L

# 580 Super L

## QUICK FACTS

- ✓ 95 Gross Horsepower (71 kW)
- ✓ 14'3" Backhoe Dig Depth (4.34 m)
- ✓ 6,182 lb Loader Lift Capacity (2804 kg)
- ✓ 15,761 lb Heaviest Configuration (7149 kg)

## The Loader/Backhoe of Choice...

The popularity of the 580 Super L can be attributed to its ability in making your job successful. This dependable workhorse is found on more worksites than any other loader/backhoe in the world!

The Series 2 580 Super L is powered by 95 gross horsepower at 2200 rpm. And if it's equipped with the optional Powershift transmission, the horsepower nets out at 94 with a viscous fan drive so you can handle the toughest tasks without lugging down.

This 14 foot class backhoe offers you outstanding productivity and versatility in a wide range of applications with options designed specifically for this machine. By adding the

Powershift transmission, you can cycle through loader applications with ease. Powershift allows you to shift up or down on-the-go with the twist of your wrist. It also provides 4WD braking when in 2WD for positive stopping power in poor operating conditions.





# Worldwide

If equipped with the optional cab, the 580 Super L can be outfitted with the custom fitted comfort of an air-suspension seat as well. This option is a real backsaver if you frequently use your loader on rough ground.

For backhoe attachment versatility, optional Super L auxiliary hydraulics feature a low- and high-flow range so you can effectively power high capacity attachments such as hammers or cold planers for reconstruction of roads and bridges.

In utility applications, the 580 Super L proves to be one of the fastest trenching machines available.

The combination of smooth, multi-function control and crowd power, along with exceptional visibility and increased bucket rotation, allow you to dig faster and more efficiently than ever before.

This Series 2 loader/backhoe will make a great addition to your fleet. Make sure you ask your Case dealer salesperson about equipping your 580 Super L with one of our Performance Value Packages that bundle your favorite options at substantial savings!



# 590 Super L

# 590 Super L

## QUICK FACTS

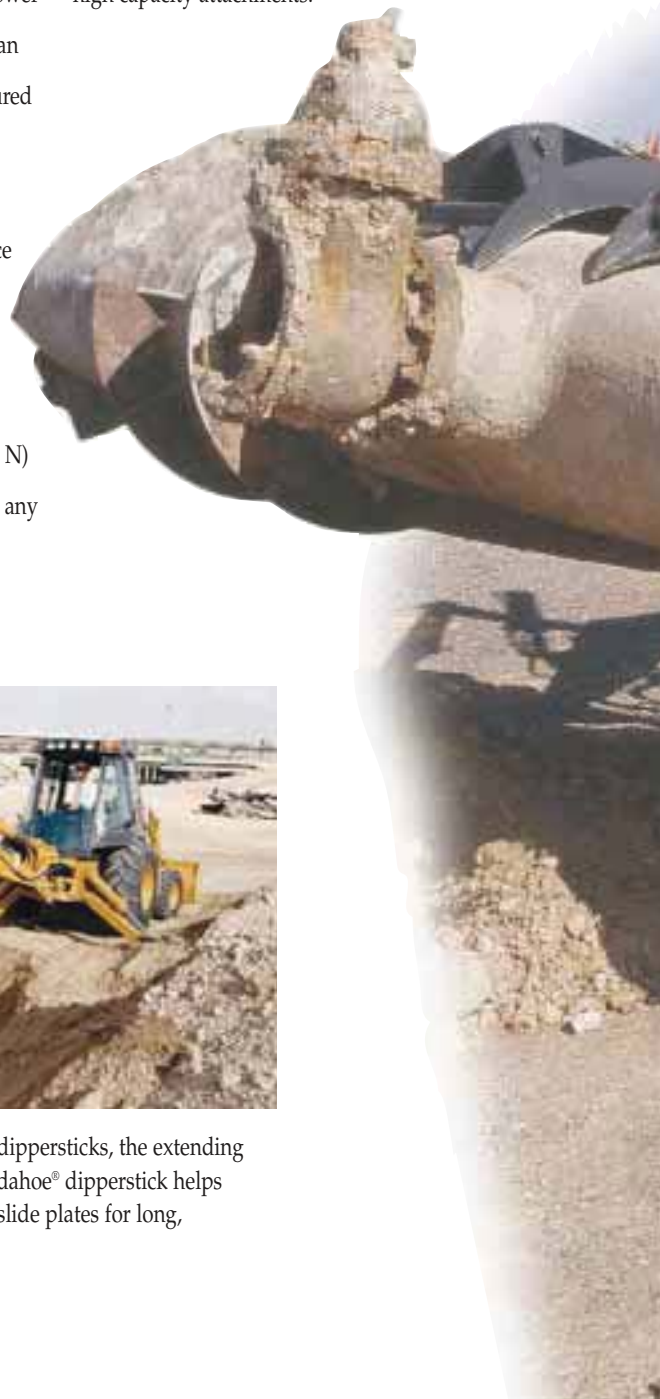
- ✓ 100 Gross Horsepower (75 kW)
- ✓ 16'4" Backhoe Dig Depth (4.98 m)
- ✓ 7,327 lb Loader Lift Capacity (3323 kg)
- ✓ 17,522 lb Heaviest Configuration (7948 kg)

## Solid Strength to Tackle the Biggest

For the added strength and digging depth you need for bigger jobs, the 590 Super L is yards above the rest. With the standard dipperstick you can dig up to 16'4" (4.98 m) and up to 20'4" (6.20 m) total depth with the optional Extendahoe® dipperstick fully extended. To be able to pull a load out of the ground that deep, you can bet this backhoe has plenty of muscle to back it up... 99 net horsepower to be exact (74 kW). That's why this machine can handle heavy loads like the concrete pipe pictured to the right.

The 590 Super L has been beefed up with 14,718 pounds of backhoe bucket breakout force for ripping through tough soils like clay and gumbo (65 469 N). For improved loader performance, an outstanding 27% increase in bucket breakout force at 10,980 pounds (48 841 N) means you'll be able to curl through just about any pile you run into.

Just like the 580 Super L, the 590 can be equipped with a Powershift transmission for high-performance shifting when cycling and traveling from site-to-site, and an air-suspension seat if equipped with a cab. The optional auxiliary backhoe hydraulics have a maximum flow of 42 gallons (159 L) per minute at 2200 engine rpm for high capacity attachments.



Unlike some competitive extendable dippersticks, the extending outer box section design of the Extendahoe® dipperstick helps prevent abrasive dirt buildup on the slide plates for long, dependable service life.



# Jobs...

With an increased fuel capacity of 42 gallons (159 L), the 590 Super L provides non-stop productivity. And to ensure maximum engine power and performance, this exceptional machine is equipped with an in-line fuel cooler for consistent combustive properties.



## L Series 2

# PRODUCT SUPPORT

### QUICK FACTS

- ✓ Case Credit Strength
- ✓ Buy, Lease or Rent
- ✓ Flexible Rental Programs
- ✓ Extended Warranty Protection
- ✓ Scheduled Maintenance Plans

## Your Case Dealer Has the Right Tools

Case dealers not only have the right product solutions to fit your unique situations, they have a vast array of services to get you into the seat of a Series 2 and take care of you long after the sale.

Through Case Credit, your dealer can determine which financial package best suits your needs. Whether you plan to buy new or used, rent, lease, or possibly lease with option to own, your Case dealer can tailor a financial package to fit your individual requirements. There are a variety of financing options to choose from for the maximum flexibility you need in your payment structure.

For peace of mind, Series 2 Loader/Backhoes come with the best warranty in the business... our 2-year powertrain and exclusive 5-year limited warranty on the backhoe. You may want to consider both our Flexible Protection and Maintenance Inspection plans.

The Flexible Protection plan allows you to choose a warranty based on time and hours of operation for added security. And, it can be included in your monthly payments.

To ensure your Series 2 is fine tuned throughout its life, a Case Maintenance Inspection provides scheduled servicing. And... it will help retain the value of your Series 2 down the road.

Whether you need full dealership support or just some friendly advice, your Case dealer is someone you can count on to be there for you.



Case dealers have skilled, factory-trained technicians to handle any service requirement with advanced diagnostics and the latest service techniques. Parts support includes well-stocked shelves and a computerized network of parts inventories that spans the globe. If it's not on the shelf, your dealer can locate the part you need at its closest location in seconds. See your Case dealer for prompt service and parts support to maximize your uptime and productivity.

### **CASE CREDIT**

Bringing People and Product Together®



Your Case dealer can provide the right solutions for your product and financial needs. Visit your nearest dealership to get the answers you want!

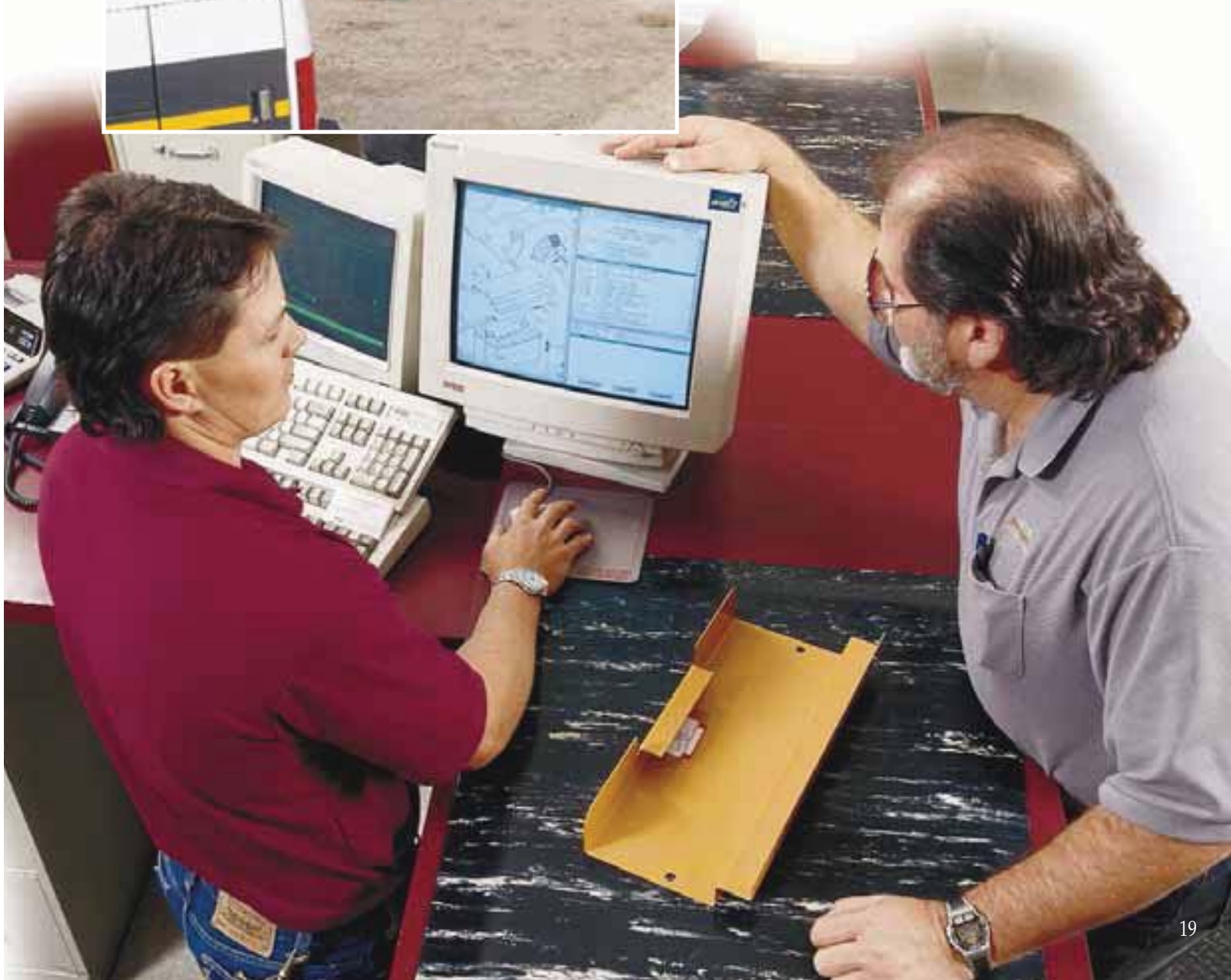




Series 2 is still the only line of loader/backhoes that provides you with a flip-up hood for convenient, grouped-groundline servicing ease.



Make sure you service your equipment with genuine Case replacement parts for maximum performance, reliability and extended service life.



## L Series 2

# ATTACHMENTS

## QUICK FACTS

- ✓ Over 25 Attachments Available
- ✓ 3 Auxiliary Hydraulic Options
- ✓ Loader Hydraulic Quick-Coupler
- ✓ Low- and High-Flow Backhoe Hydraulics

## Turn Your Series 2 Into a High-Performance Overachiever

Outfitting your Series 2 Loader/Backhoe with auxiliary hydraulics for the loader, backhoe or hand-held circuit can give you the upper hand on a variety of tasks. And, hooking up attachments is made simpler for saving precious time by equipping your Series 2 with quick-couplers for the loader and backhoe.

Both the 580 and 590 Super L's come equipped with a backhoe quick-coupler as standard equipment. And if you order backhoe hydraulics, the plumbing is already extended out to the dipperstick. Optional backhoe hydraulics for Super L's now feature a low- and high-flow range for all your hydraulic attachment requirements.

For the fastest, easiest attachment exchange, the Case loader hydraulic quick-coupler allows you to swap-out tools in a fraction of the time of manual hookups...right from the seat of your Series 2.

**4 IN 1® Buckets**



**Forks**



**Scrap Grapple Buckets**



**Rakes**



**Brooms**



**Hammers**



**Hydraulic Coupler**



**Mechanical Coupler**



See your Case dealer for information on versatile Case attachments.





## ENGINE

Model .....	Case 4-390	Case 4T-390	Case 4T-390	Case 4T-390
	naturally aspirated	turbocharged	turbocharged	turbocharged
Cylinders .....	4	4	4	4
Bore/Stroke .....	4.02" x 4.72"	4.02" x 4.72"	4.02" x 4.72"	4.02" x 4.72"
	(102 x 120 mm)	(102 x 120 mm)	(102 x 120 mm)	(102 x 120 mm)
Displacement .....	239 in <sup>3</sup> (3.92 L)	239 in <sup>3</sup> (3.92 L)	239 in <sup>3</sup> (3.92 L)	239 in <sup>3</sup> (3.92 L)
Horsepower				
Gross .....	75 (56 kW)	85 (63 kW)	95 (71 kW)	100 (75 kW)
Net .....	73 (54 kW)	80 (60 kW)	94* (70 kW)	99 (74kW)
			90 (67 kW)	

## POWERTRAIN

Transmission.....	4F/4R synchro	4F/4R synchro	4F/4R synchro	4F/4R synchro
Maximum travel speed				
Forward.....	25.0 mph (40.2 km/h)	25.0 mph (40.2 km/h)	25.1 mph (40.4 km/h)	25.7 mph (41.3 km/h)
Reverse .....	30.2 mph (48.6 km/h)	30.2 mph (48.6 km/h)	30.3 mph (48.8 km/h)	31.0 mph (49.9 km/h)

## HYDRAULICS

Loader flow @ 3000 psi (207 bar) .....	28.5 gpm (108 L/min)	28.5 gpm (108 L/min)	28.5 gpm (108 L/min)	31.5 gpm (119 L/min)
Backhoe flow @ 3000 psi (207 bar) .....	28.5 gpm (108 L/min)	28.5 gpm (108 L/min)	38 gpm (144 L/min)	42.5 gpm (161 L/min)

## PERFORMANCE

Backhoe dig depth –				
Maximum .....	14'3" (4.34 m)	14'3" (4.34 m)	14'5" (4.39 m)	16'4" (4.98 m)
Maximum, Extendahoe® extended .....	18'3" (5.56 m)	18'3" (5.56 m)	18'3" (5.56 m)	20'4" (6.20 m)
Loader lift capacity to full height .....	5,293 lb (2401 kg)	5,293 lb (2401 kg)	6,182 lb (2804 kg)	7,327 lb (3323 kg)
Loader breakout force –				
Lift cylinders .....	7,761 lbf (34 523 N)	7,761 lbf (34 523 N)	9,164 lbf (40 763 N)	10,729 lbf (47 725 N)
Dump cylinders .....	8,019 lbf (35 670 N)	8,019 lbf (35 670 N)	9,480 lbf (42 169 N)	10,980 lbf (48 841 N)
Backhoe breakout force –				
Bucket cylinder .....	11,212 lbf (49 873 N)	11,212 lbf (49 873 N)	12,821 lbf (57 031 N)	14,718 lbf (65 469 N)
Dipper cylinder .....	7,049 lbf (31 356 N)	7,049 lbf (31 356 N)	8,224 lbf (36 582 N)	8,449 lbf (37 583 N)
Backhoe boom lift capacity				
@ ground level.....	2,490 lb (1129 kg)	2,490 lb (1129 kg)	2,550 lb (1157 kg)	3,330 lb (1510 kg)

## DIMENSIONS

Height to –				
Top of canopy .....	8'9" (2.67 m)	8'9" (2.67 m)	8'9" (2.67 m)	8'11" (2.72 m)
Top of cab.....	8'11" (2.72 m)	8'11" (2.72 m)	8'10" (2.69 m)	8'11" (2.72 m)
Transport.....	11'3" (3.42 m)	11'3" (3.42 m)	10'10" (3.29 m)	11'2" (3.4 m)
Bucket hinge pin fully raised.....	11'2" (3.4 m)	11'2" (3.4 m)	11'2" (3.4 m)	11'5" (3.47 m)
Overall length –				
w/General purpose bucket .....	23'0" (7.01 m)	23'0" (7.01 m)	22'7" (6.89 m)	23'5" (7.13 m)
w/4 IN 1® bucket.....	22'10" (6.99 m)	22'10" (6.99 m)	22'4" (6.82 m)	22'4" (6.82 m)
Wheelbase .....	84" (2.13 m)	84" (2.13 m)	84" (2.13 m)	84" (2.13 m)

## SERVICE CAPACITIES

Fuel tank .....	31.4 gal (119 L)	31.4 gal (119 L)	31.4 gal (119 L)	42.0 gal (159 L)
Engine oil w/filter.....	11.6 qt (11 L)	11.6 qt (11 L)	11.6 qt (11 L)	11.6 qt (11 L)
Total hydraulic w/o Extendahoe®.....	28.0 gal (106 L)	28.0 gal (106 L)	31.5 gal (119 L)	34.25 gal (130 L)

## OPERATING WEIGHT

Lightest configuration .....	12,547 lb (5691 kg)	12,572 lb (5703 kg)	13,306 lb (6036 kg)	15,268 lb (6926 kg)
Heaviest configuration .....	15,126 lb (6861 kg)	15,151 lb (6872 kg)	15,761 lb (7149 kg)	17,522 lb (7948 kg)

NOTE: Dimensions and travel speeds based on unit equipped with 2WD, 19.5L x 24 rear tires, general purpose loader bucket and standard dipperstick except as noted. Heaviest operating weight equipped with 4WD, 4 IN 1® loader bucket and Extendahoe® dipperstick. \* Net horsepower when equipped with a Powershift transmission. See individual spec sheets for more detailed information.

# STANDARD/OPTIONAL EQUIPMENT

## L Series 2

### Standard

#### Engine

Case 4-390 diesel	•			
Case 4T-390 turbocharged diesel		•	•	•
Automatic fan belt tensioner	•	•	•	•
Integral engine oil cooling	•	•	•	•
Air intake pre-cleaner	•	•	•	•
Fuel filter w/water trap	•	•	•	•
Dual element air cleaner	•	•	•	•
65 amp alternator	•	•	•	•
685 CCA 12-volt battery	•	•	•	•
Heavy-duty radiator	•	•	•	•
Cold weather ether starting aid	•			

#### Operator's Compartment

ROPS/FOPS canopy	•	•	•	•
Key start	•	•	•	•
Instrument panels	•	•	•	•
Hydrostatic steering	•	•	•	•
Hand and foot throttles	•	•	•	•
Vinyl seat w/180° swivel	•	•	•	•
Accessory power plugs (2)	•	•	•	•
Anti-vandalism cover (canopy only)	•	•	•	•
Beverage holder	•	•	•	•
Coat hook w/tether strap	•	•	•	•
Interior rear-view mirror	•	•	•	•
2" (51 mm) retractable seat belt	•	•	•	•
Storage compartment	•	•	•	•
Horn	•	•	•	•

#### Powertrain

2WD	•	•	•	•
4F/4R Synchronesh transmission	•	•	•	•
Power shuttle modulation	•	•	•	•
Torque converter	•	•	•	•
Transmission disconnect	•	•	•	•
Electro-hydraulic differential lock	•	•	•	•
Wet disc brakes	•	•	•	•
11L x 16.1 front tires	•	•	•	•
14.5/75 x 16.1 front tires				•
21L x 24 rear tires				•

#### Hydraulics

Open-center design	•	•	•	•
2-spool loader control valve	•	•	•	•
6-spool backhoe control valve	•	•	•	•
Heavy-duty oil cooler	•	•	•	•

#### Loader

Single lever control	•	•	•	•
Positive hold float	•	•	•	•
Return-to-dig	•	•	•	•
Hydraulic self-leveling	•	•	•	•
In-line, reverse linkage	•	•	•	•
Dual parallel dump cylinders	•	•	•	•
Transmission disconnect button	•	•	•	•
Bucket position indicator	•	•	•	•

#### Backhoe

Overcenter design	•	•	•	•
Foot swing w/3 lever control	•	•	•	•
Case attachment coupler	•	•	•	•
Wing stabilizers w/cleated cast pads	•	•	•	•

#### Other

Forward tilt engine hood	•	•	•	•
Replaceable, molded front bumpers	•	•	•	•
2 halogen headlights	•	•	•	•
2 rear flood lights	•	•	•	•
4 rear flood lights				•
2 rear tail and stop lights	•	•	•	•
2 front flashers/turn lights	•	•	•	•
2 rear flashers/turn lights	•	•	•	•

### Optional

#### Engine

•	•	•	•	Cold weather ether starting aid
•	•	•	•	Batteries, dual 12-volt 525 CCA
•	•	•	•	Chaff screen
•	•	•	•	Fuel tank, 40 gallon (151 L)
	•	•		Alternator, 95 amp

#### Operator's Compartment

•	•	•	•	Cab w/defroster, dome light, front and rear wipers, tinted glass and floor mat
•	•	•	•	Cab Convenience Package w/vinyl-covered interior, radio-ready kit w/antenna and speakers, window washers w/adjustable spray nozzles, additional storage tray, sunvisor and 75 dB(A) sound level
•	•	•	•	Cab heater
•	•	•	•	Cab air conditioning w/heater
•	•	•	•	Ride control
•	•	•	•	Mechanical-suspension seat, vinyl or cloth covered
	•	•	•	Air-suspension cloth seat (cab units only)
•	•	•	•	Sunvisor for canopy models
•	•	•	•	Seat belt, retractable 3" (75 mm)

#### Powertrain

•	•	•	•	4WD w/outboard planetary drive and on-the-go push-button activation
•	•	•	•	12 x 16.5 front tires for 4WD (included)
•	•	•	•	14 x 17.5 front tires for 4WD (included)
•	•	•	•	17.5L x 24 rear tires
•	•	•	•	19.5L x 24 rear tires
	•	•		Powershift transmission (4WD only)

#### Hydraulics

•	•	•	•	Loader attachment auxiliary hydraulics
•	•	•	•	Backhoe attachment auxiliary hydraulics
•	•	•	•	Hand-held equipment auxiliary hydraulics
•	•	•	•	Loader hydraulic attachment coupler

#### Loader

•	•	•	•	Attachment auxiliary hydraulics
•	•	•	•	Hydraulic attachment coupler
•	•	•	•	82" (2.08 m) General purpose bucket
•	•	•	•	82" (2.08 m) 4 IN 1° bucket
•	•	•	•	93" (2.36 m) General purpose bucket
	•	•		93" (2.36 m) 4 IN 1° bucket

#### Backhoe

•	•	•	•	Extendahoe®
•	•	•	•	Case attachment coupler
•	•	•	•	Attachment auxiliary hydraulics
•	•	•	•	Two-lever control
•	•	•	•	Stabilizer pad, combination flip-over
•	•	•	•	Stabilizer pad, rubber
•	•	•	•	Counterweight, 440 lb (200 kg)
•	•	•	•	Counterweight, 900 lb (408 kg)
•	•	•	•	General purpose trenching buckets in 18", 24", 30" widths (457, 610, 762 mm)
•	•	•	•	Heavy-duty trenching buckets in 12", 16", 18", 24", 30", 36" widths (305, 406, 457, 610, 762, 914 mm)
•	•	•	•	24" (610 mm) High-capacity trenching bucket
	•	•		30" (762 mm) High-capacity trenching bucket

#### Other

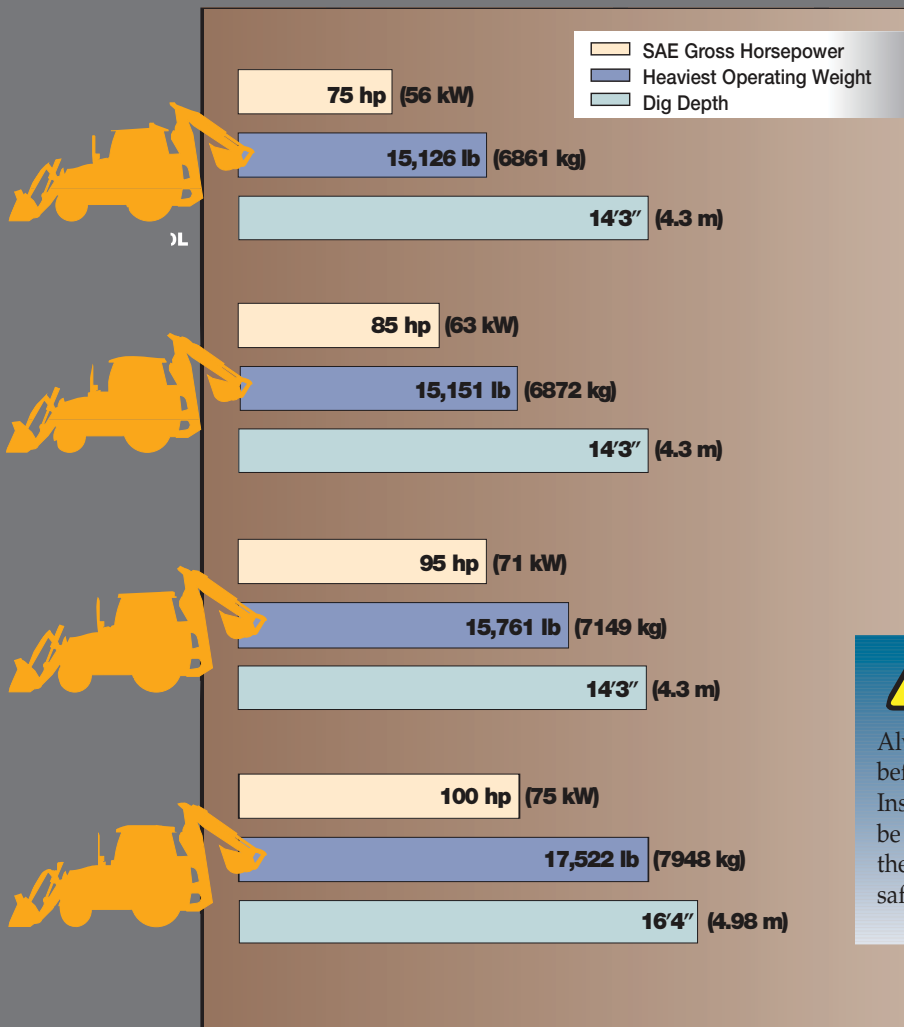
•	•	•	•	Tool box
•	•	•	•	Special paint
•	•	•	•	Flood lights, front (2)
•	•	•	•	Flood lights, rear (2)







# CASE



## SAFETY NEVER HURTS!™

Always read the Operator's Manual before operating any equipment. Inspect equipment before using it, and be sure it is operating properly. Follow the product safety signs and use any safety features provided.

**NOTE:** All specifications are stated in accordance with SAE Standards or Recommended Practices, where applicable.

**IMPORTANT:** Case Corporation reserves the right to change these specifications without notice and without incurring any obligation relating to such change. Units shown may be equipped with non-standard equipment.

© 1998 CASE CORPORATION

All Rights Reserved. Case, Case Credit, 4 IN 1 and Extendahoe are registered trademark of Case Corporation.

This literature has been published for world-wide circulation. Availability of some models and equipment builds vary according to the country in which the equipment is used. The illustrations and text may include optional equipment and accessories and may not include all standard equipment. Your Case dealer/distributor will be able to give you details of the products and their specifications available in your area.

Attachments from other manufacturers are shown for illustration only. Case Corporation does not warrant the safety or reliability of these attachments.

Visit Case Corporation on the Web at: <http://www.casecorp.com>

Form No. CE 175-01-98  
Replaces Form No. None

### CASE CORPORATION

700 STATE STREET  
RACINE, WI 53404 U.S.A.

### CASE CANADA CORPORATION

450 SHERMAN AVENUE NORTH  
HAMILTON, ON L8N 4C4 CANADA

### CASE EUROPE HEADQUARTERS

EUROPE, AFRICA, MIDDLE EAST  
18, PLACE DES NYMPHEAS  
ZI PARIS NORD 11  
95915 ROISSY CDG CEDEX FRANCE

### CASE LATIN AMERICAN HEADQUARTERS

700 STATE STREET  
RACINE, WI 53404 U.S.A.

### CASE ASIA/PACIFIC REGION

CASE CORPORATION PTY. LTD.  
31-67 KURRAJONG AVENUE  
ST. MARYS  
NEW SOUTH WALES 2760  
AUSTRALIA

