

Tandem Vibratory Roller

Hydrostatic drive for infinitely variable speeds
Front, rear or dual drum vibration control
Optimum operator comfort and working visibility

752B



Case

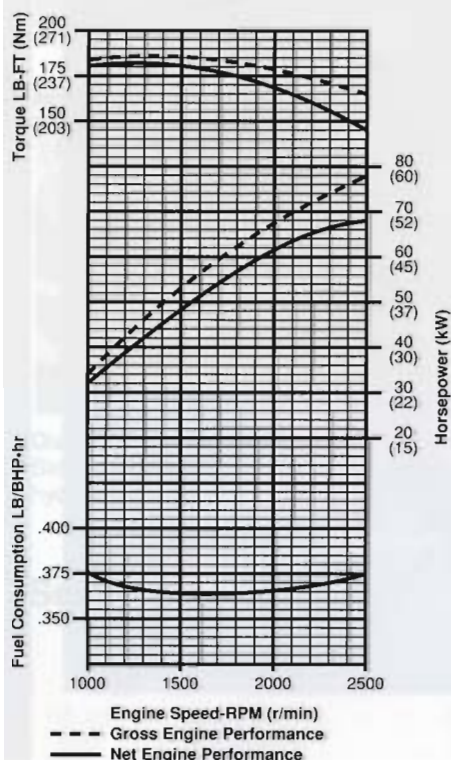
752B

Model 752B Specifications

Engine

Make and model	Case 4-390
Type of fuel	No. 2 diesel
No. of cylinders	4
Bore and stroke	4.02" x 4.72" (102 mm x 120 mm)
Displacement	239 ³ (3917 cm ³)
Compression ratio	17.0 to 1
Fuel induction	Injectors
Fuel supply	Injection pump
Air cleaner	Dual, dry-type replaceable element
Oil filter	Replaceable spin-on cartridge, full flow
Lubrication	Positive pressure
Cooling system	Pressurized 15 psi (103 kPa)
Engine gradeability	35°
Horsepower	
(1) Gross	78 @ 2500 rpm (58 kW @ 2500 r/min)
(2) SAE net	69 @ 2500 rpm (51.6 kW @ 2500 r/min)
Max. Torque ft-lb	
(1) Gross	186 @ 1200 rpm (252 Nm @ 1200 r/min)
(2) SAE Net	181 @ 1200 rpm (245 Nm @ 1200 r/min)
(1) Gross engine horsepower or torque at flywheel per SAE Standard J1349	
(2) Net engine horsepower or torque at flywheel per SAE Standard J1349	

Power Curve



Electrical

System voltage	12
Battery (1)	Maintenance free, 420 cold cranking amps at 0°F (-31°C)
Alternator	65 amp

Ground Drive System

Piston-type variable displacement pump with fixed displacement 2-speed motor on drums.

Brakes

Operating ... Hydrostatic braking in neutral position of ground drive pump with engine running.
Parking ... Oil pressure released, spring applied disc brake in drum drive motor.

Steering

Articulated design with hydraulic power steering. Operator's seat can be adjusted to either side on slide rail for excellent visibility.
Steering cylinders (2) ...
2.48" bore x 9.84" stroke, 1.57" rod
(63 mm bore x 250 mm stroke, 40 mm rod)

Hydraulic System

Hydraulic pump—
Capacity:
ground drive . . . 31.4 gpm (118.86 L/min)
vibrator drive . . . 27 gpm (102.21 L/min)
steering 7.2 gpm (27.25 L/min)
Relief setting
ground drive . . . 5075 psi (34 991 kPa)
vibrator drive . . . 5075 psi (34 991 kPa)
steering 2030 psi (13 996 kPa)
Filtration Full-flow cartridge—
10 micron rating with
bypass indicator light
Hydraulic lines Steel tubing with
brazed or flared fittings and wire braid, high
pressure hose with crimped full flow fittings.

Filters

Engine oil	Spin-on cartridge
Fuel	Spin-on cartridge
Hydraulic oil	Replaceable cartridge
Air	Dual replaceable elements



Convenient Controls

Center steering console is flanked by clear, easy-to-read gauges and indicator lights.

Service Capacities

	U.S. Gal	Liters
Fuel tank	38	143.8
Engine oil	11.5 qt	11
Hydraulic reservoir	47.5	179.8
Vibrators (each)	3.7 qt	3.5
Cooling system	5.2	19.5

Travel Speeds

Working range—	
forward/reverse	0 to 4.3 mph (6.9 km/h)
Transport range	
forward/reverse	0 to 8.6 mph (13.8 km/h)

Water Sprinkler System

Pressurization 12-volt controls at operator's station
Tank Internally coated to resist rust and corrosion
Capacity:
Front 122 U.S. gal (461.8 L)
Rear 95 U.S. gal (359.6 L)

Indicator Lights and Gauges

Engine temperature gauge • Fuel gauge • Horn • Hourmeter • Low-high range • Warning indicator lights for: alternator charge, engine oil pressure, low sprinkler water level and neutral start.

Standard Equipment

Adjustable position seat • Beveled drums • Hourmeter • Instrument panel cover • Lock-up kit • Plastic coated tanks • Rust proof pressurized sprinkler system • Vulcolan scrapers • 12-volt battery.

Optional Equipment

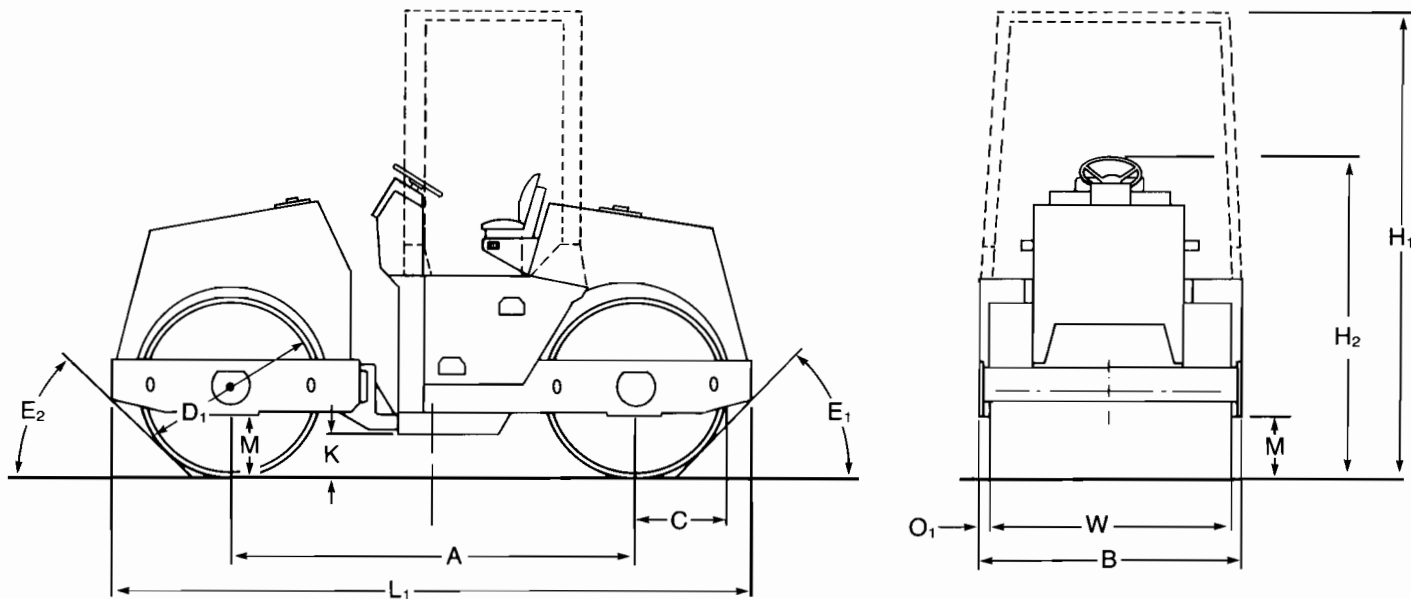
Back-up alarm • Cold start kit • Front and rear lights • Gravity sprinkler system • ROPS with seat belts • Speed limiter • Speedometer • Water level indicator.



Special Option

Optional Halogen front and rear lights for night operation.

752B Dimensional Data



	A	B	C	D ₁ =D ₂	H ₁	H ₂	K	L ₁	O ₁	W	E ₁	E ₂	M
in	106	77.5	30.3	48	117	87	11	166.5	5.75	66	40°	40°	15.9
mm	2690	1970	770	1220	2970	2210	280	4230	147	1675			405

Operating Data

Operating weight	18,728 lb (8495 kg)	
Maximum with ballast	20,922 lb (9490 kg)	
Drum weight (unsprung)	3307 lb (1500 kg)	
Weight distribution— (static wt. at ground contact point)		
front	9023 lb (4093 kg)	
rear	9705 lb (4402 kg)	
Static applied linear drum load (P.L.I.)		
front	137 lb/in (24.5 kg/cm)	
rear	143 lb/in (25.7 kg/cm)	
Articulation	25°	
Oscillation	10°	
Turning radius—inside	16'5" (5 m)	
Drum shell thickness	0.67" (17 mm)	
Maximum depth of compaction	27.5" (699 mm)	
	1st Stage	2nd Stage
Frequency	2000 Vpm (33.3 Hz)	3000 Vpm (50 Hz)
Centrifugal force per drum	16,096 lb (7301 kg)	7500 lb (3401 kg)
Centrifugal force rolling		
width (P.L.I.)	244 lb/in (27.57 Nm)	113.5 lb/in (12.82 in)
Amplitude (Nominal)	0.039" (1.0 mm)	0.008" (0.2 mm)
Total applied force		
front	25,135 lbf (111 806 N)	16,539 lbf (73 569 N)
rear	25,576 lbf (113 768 N)	16,980 lbf (75 531 N)
Total applied linear force		
front	380.8 lb/in (43.01 Nm)	250.5 lb/in (28.30 Nm)
rear	387.5 lb/in (43.78 Nm)	257.3 lb/in (29.07 Nm)

752B Vibratory Roller



Moveable Seat

Adjustable position seat provides excellent visibility to each side plus center position.



Quick Service Access

Side door panel allows easy access to hydraulics, filter.



Tight Turn Capability

25° articulated power steering provides maneuverability and 16'5" (5 m) inside turn radius.

Sold and serviced by:

Note: All specifications are stated in accordance with SAE Standards or Recommended Practices, where applicable.

Important

J I Case Company reserves the right to change these specifications without notice and without incurring any obligation relating to such change. Unit illustrated is equipped with non-standard items.

J I Case

A Tenneco Company
700 State Street, Racine, WI 53404 U.S.A.

