

Dozers

Case 113 net horsepower (84.3 kW) diesels
2.7 yd³ (2.06 m³) to 3.2 yd³ (2.45 m³) blades
Choice of 62" (1.57 m) or 74" (1.88 m) gauge
Smooth, modulated power shift, power turn,
counter-rotation transmission
23,500 to 26,552 lb (10 659 to 12 044 kg)
operating weight

1150E



case

1150E

1150E Basic Tractor

Engine

For 62" gauge, long track w/angle/tilt blade

Make and model **Case 6T-590**
 Type of fuel No. 2 diesel
 No. of cylinders 6
 Bore and stroke 4.02" x 4.72"
 (102 mm x 120 mm)
 Displacement 359 in³ (5.9 L)
 Compression ratio 17.5:1
 Fuel induction Open chamber, direct injection
 Air cleaner Dry type — dual replaceable elements w/service indicator
 Oil filter Full flow, replaceable spin-on cartridge
 Lubrication Positive pressure
 Cooling system Pressurized — 15 psi (103 kPa)

Horsepower

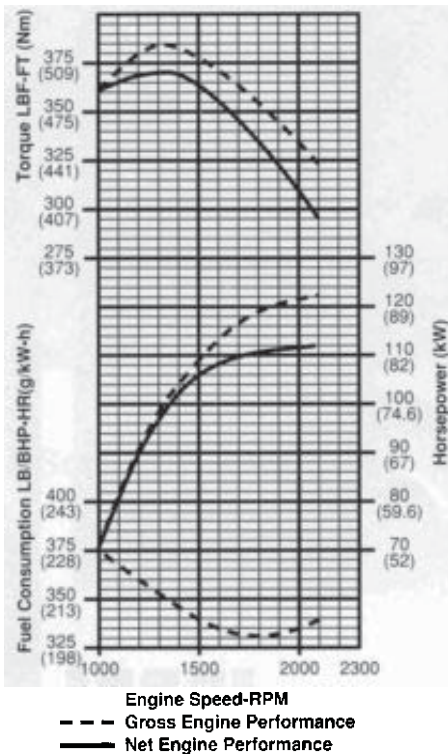
(1) Gross 123 @ 2100 rpm (91.7 kW @ 2100 r/min)
 (2) SAE net 113 @ 2100 rpm (84.3 kW @ 2100 r/min)
 D.I.N. 114 p.s. @ 2100 rpm (85.0 kW @ 2100 r/min)

Max torque lbf-ft

(1) Gross 385 @ 1300 rpm (522 Nm @ 1300 r/min)
 (2) SAE net 373 @ 1300 rpm (506 Nm @ 1300 r/min)

(1) Gross engine horsepower or torque at flywheel per SAE Standard J1349.
 (2) Net engine horsepower or torque at flywheel per SAE Standard J1349.

Power Curve — 6T-590



Engine

For all others

Make and model **Case 6-830/6T-830**
 Type of fuel No. 2 diesel
 No. of cylinders 6
 Bore and stroke 4.49" x 5.32"
 (114 mm x 135 mm)
 Displacement 505 in³ (8.3 L)
 Compression ratio 16.4:1/17.3:1
 Fuel induction Open chamber, direct injection
 Air cleaner Dry type — dual replaceable elements w/service indicator
 Oil filter Full flow, replaceable spin-on cartridge
 Lubrication Positive pressure
 Cooling system Pressurized — 15 psi (103 kPa)

Horsepower

(1) Gross 123 @ 2100 rpm (91.7 kW @ 2100 r/min)
 (2) SAE net 113 @ 2100 rpm (84.3 kW @ 2100 r/min)
 D.I.N. 114 p.s. @ 2100 rpm (85.0 kW @ 2100 r/min)

Max torque lbf-ft—Naturally aspirated

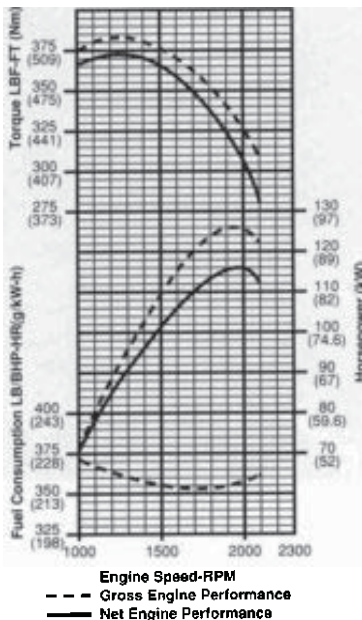
(1) Gross 383 @ 1200 rpm (519 Nm @ 1200 r/min)
 (2) SAE net 373 @ 1200 rpm (506 Nm @ 1200 r/min)

Max torque lbf-ft—Turbocharged

(1) Gross 396 @ 1200 rpm (537 Nm @ 1200 r/min)
 (2) SAE net 386 @ 1200 rpm (523 Nm @ 1200 r/min)

(1) Gross engine horsepower or torque at flywheel per SAE Standard J1349.
 (2) Net engine horsepower or torque at flywheel per SAE Standard J1349.

Power Curve — 6-830



Electrical

System voltage 24-volt, negative ground
 Batteries (2) 12-volt, low maintenance 650 cold cranking amps @ 0°F (−18°C)
 Alternator 45 amp

Steering

Steering controlled by independent hydraulic clutches in transmission or by oil-cooled, multiple-disc power brakes. Four types of turns: power turns, gradual turns, counterrotation, and brake turns.

Power Train

Transmission: Constant mesh four speed powershift transmission. Modulation in high/low range, forward/reverse. Four forward and four reverse speeds.

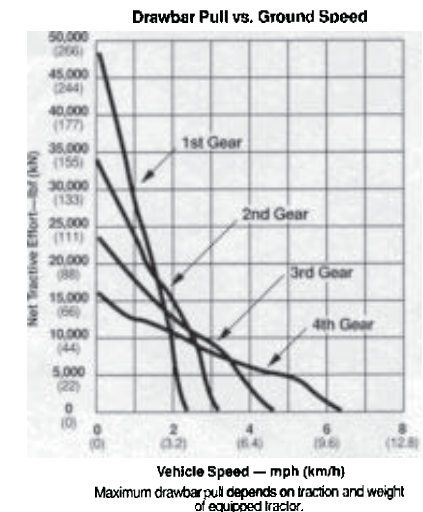
Torque converter: Single stage, hydrokinetic type, 13" (330 mm) with 2.33:1 ratio.

Brakes: Two multiple-disc power brakes, oil-cooled, independently controlled by power brake pedals for steering. Separate pedal provides braking without disengaging transmission. Hand-operated over-center parking brake.

Final Drives: Spur and bull gear type, single reduction. One-piece line-bored case with final drive seal guards.

Filtration: Spin-on cartridge, B₅=2.0 rating. Inlet line strainer, 100 mesh screen.

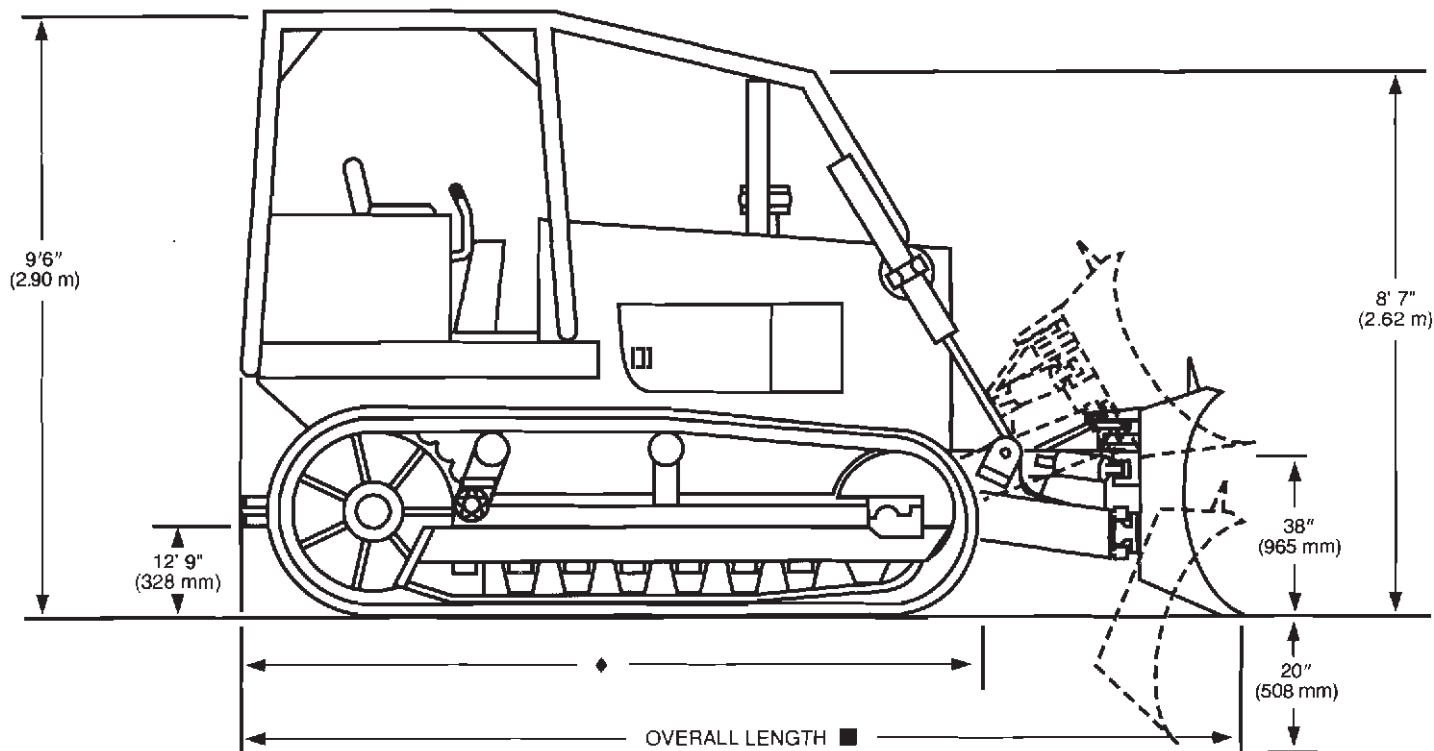
Drawbar Pull



Travel Speeds mph (km/h)

Engine at full throttle	1st	2nd	3rd	4th
Forward	2.2 (3.5)	3.1 (5.0)	4.4 (7.1)	6.3 (10.1)
Reverse	2.6 (4.2)	3.7 (6.0)	5.3 (8.5)	7.6 (12.2)

Dimensional Data — Inside Push Beam



Track Type	Long Track	Long Track	LGP
Gauge	62" (1.57 m)	74" (1.88 m)	74" (1.88 m)
Dozer Blade	Angle/Tilt	Angle/Tilt	Angle/Tilt
Width	9' 2" (2.79 m)	10' 4" (3.15 m)	10' 4" (3.15 m)
Height	39.5" (1.0 m)	39.5" (1.0 m)	39.5" (1.0 m)
Lift above ground	38" (965 mm)	38" (965 mm)	38" (965 mm)
Drop below ground	20" (508 mm)	20" (508 mm)	20" (508 mm)
Angle, hydraulic—both directions	0° - 25°	0° - 25°	0° - 25°
Tilt, hydraulic—either end	13.6" (345 mm)	15" (381 mm)	15" (381 mm)
Push beam	Inside	Inside	Inside
SAE blade capacity	2.8 yd ³ (2.14 m ³)	3.1 yd ³ (2.37 m ³)	3.1 yd ³ (2.37 m ³)

Tractor Dozer Dimensions

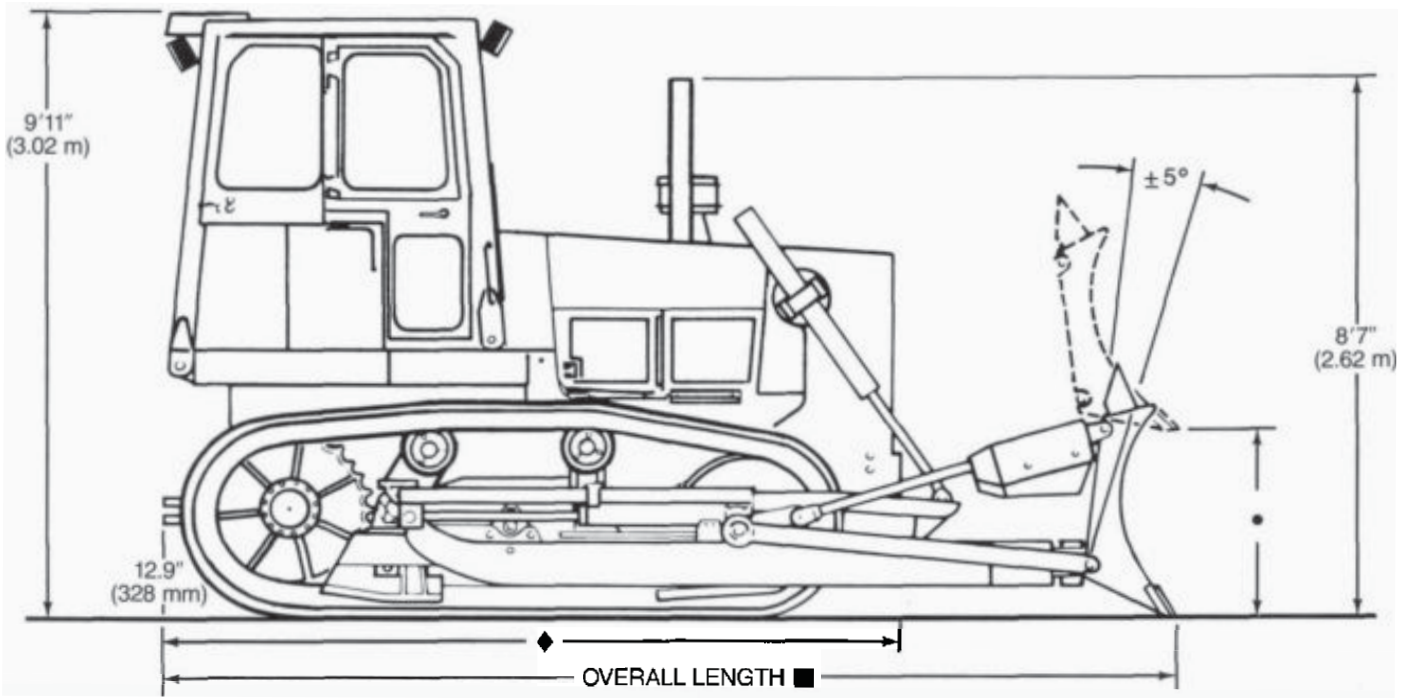
Overall length			
With blade straight (with drawbar)	16' 3" (4.95 m)	16' 3" (4.95 m)	16' 3" (4.95 m)
With blade angled (with drawbar)	17' 10" (5.44 m)	18' 1" (5.51 m)	18' 1" (5.51 m)
With ripper raised	19' 0" (5.79 m)	19' 0" (5.79 m)	—
With winch	18' 1" (5.51 m)	18' 1" (5.51 m)	18' 1" (5.51 m)
◆ Less "C" frame and blade	11' 10" (3.61 m)	11' 10" (3.61 m)	11' 10" (3.61 m)
Maximum grouser width	22" (559 mm)	34" (864 mm)	34" (864 mm)
Specification shoe width	22" (559 mm)	22" (559 mm)	34" (864 mm)
Overall Width			
With blade straight	110" (2.79 m)	124" (3.15 m)	124" (3.15 m)
With blade angled	101" (2.56 m)	115" (2.92 m)	119" (3.02 m)
At track with maximum shoes	84" (2.13 m)	108" (2.74 m)	108" (2.74 m)
Turning clearance circle (counterrotating)	19' 11" (6.07 m)	21' 6" (6.55 m)	22' 0" (6.71 m)
Ground clearance	12.9" (328 mm)	12.9" (328 mm)	12.9" (328 mm)

Operating weight (approx.) 24,800 lb (11 249 kg)¹ 25,400 lb (11 521 kg)¹ 26,552 lb (12 044 kg)²

¹ Includes ROPS, full fuel tank, 170 lb (77 kg) operator, 22" (559 mm) track shoes, front and rear track guides.

² Includes ROPS, full fuel tank, 170 lb (77 kg) operator, 34" (864 mm) track shoes, front and rear track guides.

Dimensional Data — Outside Push Beam



Track Type	Standard	Standard	LGP
Gauge	62" (1.57 m)	74" (1.88 m)	74" (1.88 m)
Dozer Blade	Angle/Tilt/Pitch	Angle/Tilt/Pitch	Tilt
Width	10'7" (3.23 m)	11'7" (3.53 m)	10'10" (3.30 m)
Height	36" (914 mm)	36" (914 mm)	38" (965 mm)
• Lift above ground	37.7" (958 mm)	40.8" (1.04 m)	.43" (1.09 m)
Drop below ground	21.6" (549 mm)	20.1" (511 mm)	18.5" (470 mm)
Angle, hydraulic—both directions	0° - 25°	0° - 25°	—
Tilt, hydraulic—either end	15" (381 mm)	15" (381 mm)	13.5" (343 mm)
Pitch, hydraulic—both directions	.5°	.5°	—
Push beam	Outside	Outside	Outside
SAE blade capacity	2.7 yd ³ (2.06 m ³)	3.0 yd ³ (2.29 m ³)	3.2 yd ³ (2.45 m ³)

Tractor Dozer Dimensions

Overall length	Standard	Standard	LGP
With blade straight (with drawbar)	15'3" (4.65 m)	15'6" (4.72 m)	15'4" (4.67 m)
With blade angled (with drawbar)	17'4" (5.28 m)	17'10" (5.44 m)	—
With ripper raised	18' (5.49 m)	18'3" (5.56 m)	—
With winch	17'1" (5.21 m)	17'4" (5.28 m)	17'2" (5.23 m)
Less 'C' frame, blade and drawbar	11'10" (3.61 m)	11'10" (3.61 m)	11'10" (3.61 m)
Maximum grouser width	22" (559 mm)	22" (559 mm)	34" (864 mm)
Overall Width			
With blade straight	127" (3.23 m)	138.8" (3.53 m)	129.5" (3.29 m)
With blade angled	117" (2.97 m)	126.5" (3.21 m)	—
At track with maximum shoes	84" (2.13 m)	96" (2.40 m)	108" (2.74 m)
Turning clearance circle (counterrotating)	21' (6.40 m)	21' (6.40 m)	18'6" (5.63 m)
Ground clearance	12.9" (328 mm)	12.9" (328 mm)	12.9" (328 mm)

Operating weight (approx.) 23,700 lb (10 750 kg)¹ 24,500 lb (11 113 kg)¹ 25,470 lb (11 553 kg)²

¹ Includes ROPS, full fuel tank, 170 lb (77 kg) operator and 22" (559 mm) track shoes.

² Includes ROPS, full fuel tank, 170 lb (77 kg) operator and 34" (864 mm) track shoes.

1150E Basic Tractor

Undercarriage—

Sealed and lubricated track standard; sealed track optional. Permanently sealed and lubricated track rollers, carrier rollers and front idlers. Hydraulic track adjusters. Solid-disc hunting-tooth sprockets. Reinforced box-section track-roller frame. Equalizer-beam type track frame suspension.

Dimensions

Track rollers (each side)	
Std	6
LT & LGP	7
Carrier rollers (each side)	2
Length of track on ground	
Std	87" (2.21 m)
LT & LGP	97" (2.46 m)
Shoes per track (each side)	
Std	40
LT & LGP	43
Track gauges available	62" (1.57 m) 74" (1.88 m)
Height of track shoes	
Standard shoes (available for all undercarriages)	
Closed grouser	2.06" (52.3 mm)
Optional shoes	
20" heavy duty closed grouser for standard undercarriages only	2.25" (57.2 mm)
34" (864 mm) self cleaning (cast pyramid) for LGP undercarriages only	3.07" (78 mm)

Track shoe widths available

Track shoe widths	Area of track on ground
for Standard track	
20" (508 mm)	3468 in ² (22 347 cm ²)
22" (559 mm)	3815 in ² (24 613 cm ²)
for Long track, 62" (1.57 m) gauge	
22" (559 mm)	4255 in ² (27 452 cm ²)
for Long track and LGP, 74" (1.88 m) gauge	
22" (559 mm)	4255 in ² (27 452 cm ²)
28" (711 mm)	5415 in ² (34 935 cm ²)
34" (864 mm)	6576 in ² (42 426 cm ²)

Ground pressure

Track shoe width	62" (1.58 m) gauge	74" (1.88 m) gauge
Standard track, outside push beam, PATP blade		
20" (508 mm)	6.8 psi (47 kPa)	7.0 psi (48 kPa)
22" (559 mm)	6.2 psi (43 kPa)	6.4 psi (44 kPa)
Long track, outside push beam, PAT blade		
22" (559 mm)	Not offered	5.7 psi (39 kPa)
28" (711 mm)	Not offered	4.6 psi (32 kPa)
34" (864 mm)*	Not offered	3.9 psi (27 kPa)
Long track, inside push beam, PAT blade		
22" (559 mm)	5.8 psi (40 kPa)	6.0 psi (41 kPa)
28" (711 mm)	Not offered	4.8 psi (33 kPa)
34" (864 mm)*	Not offered	4.0 psi (28 kPa)

*LGP units

Dozer Hydraulic System

Full hydraulic control of blade lift, lower, angle, tilt and pitch functions. Positive-hold "float" position in lift circuit.

Pump: Gear type, torque-converter-mounted, engine driven, 39.8 gpm @ 2000 rpm (150 L/min @ 2000 r/min).

Control valve: Open center, parallel, with pressure compensation and low pressure regeneration.

System relief pressure: 2500 psi (17 237 kPa)

Cylinders

Angle/Tilt/Pitch dozer

Lift: (2) 3.25" dia x 36.7" stroke, 1.75" rod (83 mm dia x 932 mm stroke, 44 mm rod)

Angle: (2) 3" dia x 45.9" stroke, 1.75" rod (76 mm dia x 1.17 m stroke, 44 mm rod)

Tilt, pitch: (2) 4" dia x 5.2" stroke, 2.25" rod (102 mm dia x 132 mm stroke, 57 mm rod)

Angle/Tilt dozer—LT

Lift: (2) 3.25" dia x 32.2" stroke, 1.75" rod (83 mm dia x 818 mm stroke, 44 mm rod)

Angle: (2) . . . 5" dia x 15" stroke, 2.5" rod (127 mm dia x 381 mm stroke, 64 mm rod)

Tilt: (2) 5" dia x 4.7" stroke, 2.5" rod (127 mm dia x 119 mm stroke, 64 mm rod)

Tilt dozer—LGP

Lift: (2) . 3.25" dia x 39.2" stroke, 1.75" rod (83 mm dia x 996 mm stroke, 44 mm rod)

Tilt: (2) . . 4.5" dia x 5.28" stroke, 2.25" rod (114 mm dia x 134 mm stroke, 57 mm rod)

Service Capacities

	U.S. Gal	Liters
Fuel tank	52	197
Hydraulic system	15	57
Transmission and torque converter	15	57
Engine crankcase	5.5	20.8
Final drives (each side)	8 qt	7.6
Cooling system	7.5	28.4

Standard Equipment

Anti-vandalism package • Color-coded international symbol gauges • Crankcase guard • Drawbar • Dry two-stage air cleaner with service indicator • Engine sideshields • 45-amp alternator and voltage regulator • Full bottom transmission guard • Heavy-duty radiator guard • Horn • Hydraulic track adjusters • Master disconnect switch • Muffler • Neutral safety start mechanism • Over-center parking brake • Permanently lubricated track rollers • Precleaner • Reversible fan • ROPS canopy with 2" (51 mm) seat belt • Sealed and lubricated track • Suspension seat • Track guides (LT & LGP only) • Backup alarm.

Optional Equipment

	Approximate add-on weight	
	lb	kg
Air conditioner (cab required)	160	73
Blade, end bits (heavy-duty)	4	1.8
Cab	785	356
Cold starting aid (ether)	4	1.8
Final drive guard	5	2.3
Front brush screen	13	5.9
Hook, front pull	20	9.1
Lights	10	5
Muffler, spark arresting	8	3.6
Noise suppression kit	160	72.6
Normalizing turbocharger	25	11.3
Pyramid grousers	450	204
Ripper, three tooth w/drawbar	2250	1021
Rock guards	430	195
ROPS, canopy**	565	256
ROPS, front sweeps	150	68
ROPS rear screen	52	24
ROPS side screens	200	91
Track guides, front and rear	280	127
Track shoes, each 1" (25.4 mm) greater or less than size given in Dimensional Data	±96	±43.5

**Included in Operating Weight.

Ripper***

Overall width	66.1" (1.68 m)
Maximum penetration	19" (483 mm)
Ground clearance (at carry)	10" (254 mm)
Number of shanks	3
Shank spacing	31" (787 mm)
Ripper tips	Replaceable
Hydraulic cylinder (2) 4" dia x 10" stroke, 2" rod (102 mm dia x 254 mm stroke, 51 mm rod)
Weight	2250 lb (1021 kg)

***Not usable with shoes larger than 22" (559 mm)



1150E Tractor



Sold and serviced by:

Note: All specifications are stated in accordance with SAE Standards or Recommended Practices, where applicable.

Important

J I Case Company reserves the right to change these specifications without notice and without incurring any obligation relating to such change. Unit illustrated is equipped with non-standard items.

J I Case

A Tenneco Company
700 State Street, Racine, WI 53404 U.S.A.

