

ENGINE

Model	Isuzu AM-4HK1X Cooled EGR
Emissions Certification	Tier 4 Interim
Fuel	Requires ultra-low sulfur fuel B5 biodiesel tolerant
Type	Water-cooled, 4-cycle, high pressure common rail system. Turbo-charged w/ air cooled intercooler, DPD system
Cylinders	4-cylinder in-line
Displacement	317 in ³ (5.2 L)
Bore/Stroke	5 x 5 in (115 x 125 mm)
Fuel injection	Direct injection – electronic
Fuel filter	Replaceable, full flow spin-on cartridge
Air filter	Dry type element w/ warning restriction indicator
Oil filter	Replaceable, full flow spin-on cartridge
Engine gradeability:	
Side-to-side	35°
Fore and aft	35°
Net horsepower – SAE J1349 @ 2000 RPM:	177 hp (132.1 kW)
Net max. torque – SAE J1349 @ 1800 RPM:	458 lb-ft (621 N-m)
Cooling operating range:	109° to -13°F (43° to -25°C)
Oil	Requires low-ash oil CJ-4

DRIVETRAIN

Travel control	Dual stage relief/ counter balance design
Brakes	Mechanical disc
Service brakes	SAHR disc – each motor
Two speed travel:	
Max. high speed	3.4 mph (5.5 kph)
Max. low speed	2.2 mph (3.5 kph)
Automatic downshift	
Drawbar pull	45,187 lbf (201 kN)
Gradeability	70% – 35°

ELECTRICAL

Voltage	24 Volts
Alternator rating	70 amp
Batteries	2 x 12-Volt
Battery reserve capacity	92 Ah/5 hour
Work Lights	24 Volt
1 boom	70 watt
1 upper	70 watt

CAB AND CONTROLS

Air conditioner output	18,100 BTU/hr
Heater output	20,150 BTU/hr
Sound level inside cab – ISO6395	70 dBA
Electrical outlet	12 Volt
Cab interior light	10 watt
Rear view camera	Standard
Seat	Air-suspension

ATTACHMENTS

Boom w/ arm	33 ft 10 in (10 300 mm) 26 ft 3 in (8 000 mm)
Bucket digging force*	17,310 lbf (77 kN)

NOTE: *Digging force ratings based on ISO6015

OPERATING WEIGHT

Operating weight	62,001 lb (28 123 kg)
w/ shoes	2 ft 7 in (800 mm)
w/ boom	33 ft 10 in (10 300 mm)
w/ arm	26 ft 3 in (8 000 mm)
w/ bucket	750 lb (340 kg)
w/ counterweight	16,535 lb (7 500 kg)

NOTE: w/ operator/full fuel/standard equipment

GROUND PRESSURE

@ Standard operating weight	6.1 psi (0.42 bar)
w/ 31.5 in (800 mm) triple semi-grouser shoes	

HYDRAULICS

System design	Open center
Main pumps	Two-variable displacement/ axial piston
Max. rated flow	61.8 gpm (234 L/min)
System pressures:	
Boom, arm and bucket	4,975 psi (343 bar)
Travel circuits	4,975 psi (343 bar)
Swing circuits	4,192 psi (289 bar)
Pilot pump	1 x gear design
Max. capacity	5.3 gpm (20 L/min)
Controls	w/ boom/arm holding valve
Right track travel, bucket, boom and arm acceleration.	Four-spool section
Left track travel, bucket, boom and arm acceleration.	Five-spool section
Work mode selections	SP: Speed Priority H: Heavy Duty A: Automatic
Swing motor	Fixed displacement axial piston
Swing final drive	Planetary gear reduction
Travel motor	Two-speed independent travel/axial piston

HYDRAULIC CYLINDERS

Boom cylinders	Two (2)
Cylinder bore	5.1 in (130 mm)
Cylinder rod diameter	3.5 in (90 mm)
Cylinder stroke	52.6 in (1 335 mm)
Arm cylinder	One (1)
Cylinder bore	5.9 in (150 mm)
Cylinder rod diameter	4.1 in (105 mm)
Cylinder stroke	68.4 in (1 737 mm)
Bucket cylinder	One (1)
Cylinder bore	3.7 in (95 mm)
Cylinder rod diameter	2.6 in (65 mm)
Cylinder stroke	34.7 in (881 mm)

SERVICE CAPACITIES

Fuel tank	108 gal (410 L)
Hydraulic system	66 gal (250 L)
Hydraulic tank	39 gal (147 L)
Engine oil w/ filter	8 gal (29.6 L)
Swing drive	10.2 qt (9.7 L)
Final drive – each side	5.3 qt (5 L)
Cooling system	8 gal (30.2 L)

OTHER SPECIFICATIONS

Swing speed	0 – 10.6 RPM
Swing torque	50,818 lb-ft (68 900 N-m)
Swing brake	Mechanical disc
Undercarriage:	
Length	15 ft 3 in (4 650 mm)
Track gauge	8 ft 6 in (2 600 mm)
Carrier rollers	2
Track rollers	9
Shoes – triple grouser	51
Shoe width – std.	2 ft 7 in (800 mm)
Link pitch	7 in (190 mm)
Track:	
Chain	Grease lubricated/strutted
Guides	Single
Adjustment	Hydraulic

LIFT CAPACITIES

26 ft 3 in (8.00 m) Lift capacities using a 750 lb (340 kg) bucket, 16,535 lb (7 500 kg) counterweight.

Load (Lift Point Height)	5 ft (1.5 m)		10 ft (3 m)		15 ft (4.5 m)		20 ft (6 m)		25 ft (7.5 m)		30 ft (9 m)		MAXIMUM REACH		
	END	SIDE	END	SIDE	END	SIDE	END	SIDE	END	SIDE	END	SIDE	@	END	SIDE
+40 ft (12 m)													48 ft 9 in (14.86 m)	2,800 lb* (1 270 kg)*	2,800 lb* (1 270 kg)*
+35 ft (10.5 m)													51 ft 11 in (15.82 m)	2,750 lb* (1 247 kg)*	2,750 lb* (1 247 kg)*
+30 ft (9 m)													54 ft 5 in (16.59 m)	2,700 lb* (1 225 kg)*	2,700 lb* (1 225 kg)*
+25 ft (7.5 m)													56 ft 4 in (17.17 m)	2,750 lb* (1 247 kg)*	2,750 lb* (1 247 kg)*
+20 ft (6 m)													57 ft 9 in (17.60 m)	2,800 lb* (1 270 kg)*	2,500 lb (1 134 kg)
+15 ft (4.5 m)													58 ft 8 in (17.88 m)	2,850 lb* (1 293 kg)*	2,300 lb (1 043 kg)
+10 ft (3 m)			8,600 lb* (3 901 kg)*	8,600 lb* (3 901 kg)*	5,800 lb* (2 631 kg)*	5,800 lb* (2 631 kg)*	4,750 lb* (2 155 kg)*	4,750 lb* (2 155 kg)*	7,850 lb* (3 561 kg)*	7,850 lb* (3 561 kg)*	6,650 lb* (3 016 kg)*	6,650 lb* (3 016 kg)*	59 ft 1 in (18.01 m)	3,000 lb* (1 361 kg)*	2,150 lb (975 kg)
+5 ft (1.5 m)			4,650 lb* (2 109 kg)*	4,650 lb* (2 109 kg)*	16,150 lb* (7 326 kg)*	16,150 lb* (7 326 kg)*	12,000 lb* (5 443 kg)*	12,000 lb* (5 443 kg)*	9,300 lb* (4 218 kg)*	9,300 lb* (4 218 kg)*	7,650 lb* (3 470 kg)*	7,650 lb* (3 470 kg)*	59 ft 2 in (18.03 m)	3,150 lb* (1 429 kg)*	2,050 lb (930 kg)
Groundline	1,450 lb* (658 kg)*	1,450 lb* (658 kg)*	3,400 lb* (1 542 kg)*	3,400 lb* (1 542 kg)*	8,450 lb* (3 833 kg)*	8,450 lb* (3 833 kg)*	14,000 lb* (6 350 kg)*	12,850 lb (5 829 kg)	10,600 lb* (4 808 kg)*	9,500 lb (4 309 kg)	8,550 lb* (3 878 kg)*	7,300 lb (3 311 kg)	58 ft 9 in (17.91 m)	3,400 lb* (1 542 kg)*	2,000 lb (907 kg)
-5 ft (-1.5 m)	2,650 lb* (1 202 kg)*	2,650 lb* (1 202 kg)*	4,000 lb* (1 814 kg)*	4,000 lb* (1 814 kg)*	7,250 lb* (3 289 kg)*	7,250 lb* (3 289 kg)*	14,550 lb* (6 600 kg)*	11,550 lb (5 239 kg)	11,650 lb* (5 284 kg)*	8,600 lb (3 901 kg)	9,350 lb* (4 241 kg)*	6,650 lb (3 016 kg)	57 ft 10 in (17.63 m)	3,650 lb (1 656 kg)	2,000 lb* (907 kg)*
-10 ft (-3 m)	3,750 lb* (1 701 kg)*	3,750 lb* (1 701 kg)*	4,900 lb* (2 223 kg)*	4,900 lb* (2 223 kg)*	7,500 lb* (3 402 kg)*	7,500 lb* (3 402 kg)*	12,750 lb* (5 783 kg)*	10,800 lb (4 899 kg)	12,400 lb* (5 625 kg)*	8,000 lb (3 629 kg)	9,950 lb* (4 513 kg)*	6,200 lb (2 812 kg)	56 ft 6 in (17.22 m)	3,750 lb (1 701 kg)	2,050 lb* (930 kg)*
-15 ft (-4.5 m)	4,850 lb* (2 200 kg)*	4,850 lb* (2 200 kg)*	6,050 lb* (2 744 kg)*	6,050 lb* (2 744 kg)*	8,300 lb* (3 765 kg)*	8,300 lb* (3 765 kg)*	12,750 lb* (5 783 kg)*	10,450 lb (4 740 kg)	12,700 lb (5 761 lb)	7,600 lb (3 447 kg)	9,750 lb (4 423 kg)	5,850 lb (2 654 kg)	54 ft 8 in (16.66 m)	3,950 lb (1 792 kg)	2,150 lb* (975 kg)*
-20 ft (-6 m)	6,000 lb* (2 722 kg)*	6,000 lb* (2 722 kg)*	7,200 lb* (3 266 kg)*	7,200 lb* (3 266 kg)*	9,400 lb* (4 264 kg)*	9,400 lb* (4 264 kg)*	13,600 lb* (6 169 kg)*	10,450 lb (4 740 kg)	12,600 lb (5 715 kg)	7,500 lb (3 402 kg)	9,600 lb (4 354 kg)	5,750 lb (2 608 kg)	52 ft 4 in (15.95 m)	4,200 lb (1 905 kg)	2,350 lb (1 066 kg)
-25 ft (-7.5 m)	7,250 lb* (3 289 kg)*	7,250 lb* (3 289 kg)*	8,450 lb* (3 833 kg)*	8,450 lb* (3 833 kg)*	10,800 lb* (4 899 kg)*	10,800 lb* (4 899 kg)*	15,150 lb* (6 872 kg)*	10,600 lb (4 808 kg)	12,600 lb (5 715 kg)	7,550 lb (3 425 kg)	9,650 lb (4 377 kg)	5,750 lb (2 608 kg)	49 ft 4 in (15.04 m)	4,650 lb (2 109 kg)	2,650 lb (1 202 kg)
-30 ft (-9 m)	8,650 lb* (3 924 kg)*	8,650 lb* (3 924 kg)*	10,150 lb* (4 604 kg)*	10,150 lb* (4 604 kg)*	12,750 lb* (5 783 kg)*	12,750 lb* (5 783 kg)*	15,800 lb* (7 167 kg)*	10,850 lb (4 921 kg)	12,500 lb* (5 670 kg)*	7,750 lb (3 515 kg)	9,750 lb (4 423 kg)	5,900 lb (2 676 kg)	45 ft 8 in (13.92 m)	5,300 lb (2 404 kg)	3,100 lb (1 406 kg)
-35 ft (-10.5 m)	10,150 lb* (4 604 kg)*	10,150 lb* (4 604 kg)*	12,200 lb* (5 534 kg)*	12,200 lb* (5 534 kg)*	15,400 lb* (6 985 kg)*	15,400 lb* (6 985 kg)*	14,700 lb* (6 668 kg)*	11,300 lb (5 126 kg)	11,700 lb* (5 307 kg)*	8,100 lb (3 674 kg)	9,550 lb* (4 332 kg)*	6,200 lb (2 812 kg)	41 ft 0 in (12.50 m)	6,200 lb* (2 812 kg)*	3,850 lb (1 746 kg)
-40 ft (-12 m)			14,400 lb* (6 532 kg)*	14,400 lb* (6 532 kg)*	16,650 lb* (7 552 kg)*	16,650 lb* (7 552 kg)*	12,900 lb* (5 851 kg)*	11,950 lb (5 420 kg)	10,300 lb* (4 672 kg)*	8,600 lb (3 901 kg)	8,350 lb* (3 787 kg)*	6,650 lb (3 016 kg)	35 ft 1 in (10.69 m)	6,550 lb* (2 971 kg)*	5,100 lb (2 313 kg)
-45 ft (-13.5 m)							10,000 lb* (4 536 kg)*	10,000 lb* (4 536 kg)*	7,900 lb* (3 583 kg)*	7,900 lb* (3 583 kg)*			27 ft 3 in (8.31 m)	7,000 lb* (3 175 kg)*	7,000 lb* (3 175 kg)*

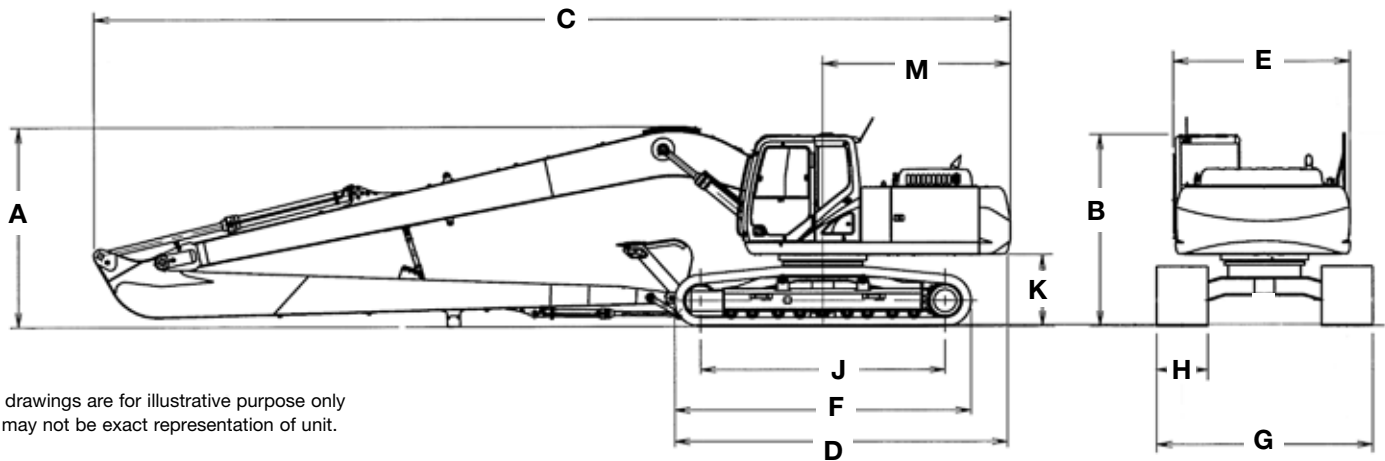
NOTE: *Following number indicates hydraulic capacity.

LIFT CAPACITIES (continued)

26 ft 3 in (8.00 m) Lift capacities using a 750 lb (340 kg) bucket, 16,535 lb (7 500 kg) counterweight.

Load (Lift Point Height)	35 ft (10.5 m)		40 ft (12 m)		45 ft (13.5 m)		50 ft (15 m)		55 ft (16.5 m)		MAXIMUM REACH		
	END	SIDE	END	SIDE	END	SIDE	END	SIDE	END	SIDE	@	END	SIDE
+40 ft (12 m)					3,400 lb* (1 542 kg)*	3,400 lb* (1 542 kg)*					48 ft 9 in (14.86 m)	2,800 lb* (1 270 kg)*	2,800 lb* (1 270 kg)*
+35 ft (10.5 m)					3,550 lb* (1 610 kg)*	3,550 lb* (1 610 kg)*	3,500 lb* (1 588 kg)*	3,500 lb* (1 588 kg)*			51 ft 11 in (15.82 m)	2,750 lb* (1 247 kg)*	2,750 lb* (1 247 kg)*
+30 ft (9 m)					3,600 lb* (1 633 kg)*	3,600 lb* (1 633 kg)*	3,650 lb* (1 656 kg)*	3,650 lb* (1 656 kg)*			54 ft 5 in (16.59 m)	2,700 lb* (1 225 kg)*	2,700 lb* (1 225 kg)*
+25 ft (7.5 m)					3,750 lb* (1 701 kg)*	3,750 lb* (1 701 kg)*	3,750 lb* (1 701 kg)*	3,750 lb* (1 701 kg)*	3,500 lb* (1 588 kg)*	3,000 lb* (1 361 kg)	56 ft 4 in (17.17 m)	2,750 lb* (1 247 kg)*	2,750 lb* (1 247 kg)*
+20 ft (6 m)					4,000 lb* (1 814 kg)*	4,000 lb* (1 814 kg)*	3,900 lb* (1 769 kg)*	3,750 lb* (1 701 kg)	3,800 lb* (1 724 kg)*	2,900 lb* (1 315 kg)	57 ft 9 in (17.60 m)	2,800 lb* (1 270 kg)*	2,500 lb* (1 134 kg)
+15 ft (4.5 m)			4,650 lb* (2 109 kg)*	4,650 lb* (2 109 kg)*	4,350 lb* (1 973 kg)*	4,350 lb* (1 973 kg)*	4,150 lb* (1 882 kg)*	3,550 lb* (1 610 kg)	4,000 lb* (1 814 kg)*	2,800 lb* (1 270 kg)	58 ft 8 in (17.88 m)	2,850 lb* (1 293 kg)*	2,300 lb* (1 043 kg)
+10 ft (3 m)	5,800 lb* (2 631 kg)*	5,800 lb* (2 631 kg)*	5,200 lb* (2 359 kg)*	5,200 lb* (2 359 kg)*	4,750 lb* (2 155 kg)*	4,250 lb* (1 928 kg)	4,400 lb* (1 996 kg)*	3,350 lb* (1 520 kg)	4,200 lb* (1 905 kg)*	2,650 lb* (1 202 kg)	59 ft 1 in (18.01 m)	3,000 lb* (1 361 kg)*	2,150 lb* (975 kg)
+5 ft (1.5 m)	6,550 lb* (2 971 kg)*	6,250 lb* (2 835 kg)*	5,750 lb* (2 608 kg)*	4,950 lb* (2 245 kg)	5,150 lb* (2 336 kg)*	3,950 lb* (1 792 kg)	4,700 lb* (2 132 kg)*	3,150 lb* (1 429 kg)	4,300 lb* (1 950 kg)	2,500 lb* (1 134 kg)	59 ft 2 in (18.03 m)	3,150 lb* (1 429 kg)*	2,050 lb* (930 kg)
Groundline	7,200 lb* (3 266 kg)*	5,750 lb* (2 608 kg)	6,250 lb* (2 835 kg)*	4,550 lb* (2 064 kg)	5,550 lb* (2 517 kg)*	3,650 lb* (1 656 kg)	4,950 lb* (2 245 kg)	2,950 lb* (1 338 kg)	4,150 lb* (1 882 kg)	2,350 lb* (1 066 kg)	58 ft 9 in (17.91 m)	3,400 lb* (1 542 kg)*	2,000 lb* (907 kg)
-5 ft (-1.5 m)	7,800 lb* (3 538 kg)*	5,300 lb* (2 404 kg)	6,700 lb* (3 039 kg)*	4,250 lb* (1 928 kg)	5,700 lb* (2 585 kg)	3,450 lb* (1 565 kg)	4,750 lb* (2 155 kg)	2,800 lb* (1 270 kg)	4,000 lb* (1 814 kg)	2,250 lb* (1 021 kg)	57 ft 10 in (17.63 m)	3,650 lb* (1 656 kg)	2,000 lb* (907 kg)*
-10 ft (-3 m)	8,100 lb* (3 674 kg)*	4,900 lb* (2 223 kg)	6,600 lb* (2 994 kg)	3,950 lb* (1 792 kg)	5,500 lb* (2 495 kg)	3,250 lb* (1 474 kg)	4,650 lb* (2 109 kg)	2,650 lb* (1 202 kg)	3,950 lb* (1 792 kg)	2,150 lb* (975 kg)	56 ft 6 in (17.22 m)	3,750 lb* (1 701 kg)	2,050 lb* (930 kg)*
-15 ft (-4.5 m)	7,800 lb* (3 538 kg)	4,650 lb* (2 109 kg)	6,400 lb* (2 903 kg)	3,800 lb* (1 724 kg)	5,350 lb* (2 427 kg)	3,100 lb* (1 406 kg)	4,550 lb* (2 064 kg)	2,550 lb* (1 157 kg)			54 ft 8 in (16.66 m)	3,950 lb* (1 792 kg)	2,150 lb* (975 kg)*
-20 ft (-6 m)	7,700 lb* (3 493 kg)	4,550 lb* (2 064 kg)	6,300 lb* (2 858 kg)	3,700 lb* (1 678 kg)	5,300 lb* (2 404 kg)	3,050 lb* (1 383 kg)	4,500 lb* (2 041 kg)	2,550 lb* (1 157 kg)			52 ft 4 in (15.95 m)	4,200 lb* (1 905 kg)	2,350 lb* (1 066 kg)
-25 ft (-7.5 m)	7,700 lb* (3 493 kg)	4,550 lb* (2 064 kg)	6,350 lb* (2 880 kg)	3,700 lb* (1 678 kg)	5,350 lb* (2 427 kg)	3,100 lb* (1 406 kg)					49 ft 4 in (15.04 m)	4,650 lb* (2 109 kg)	2,650 lb* (1 202 kg)
-30 ft (-9 m)	7,800 lb* (3 538 kg)*	4,700 lb* (2 132 kg)	6,450 lb* (2 926 kg)	3,850 lb* (1 746 kg)	5,500 lb* (2 495 kg)	3,200 lb* (1 451 kg)					45 ft 8 in (13.92 m)	5,300 lb* (2 404 kg)	3,100 lb* (1 406 kg)
-35 ft (-10.5 m)	7,900 lb* (3 583 kg)	4,950 lb* (2 245 kg)	6,500 lb* (2 948 kg)*	4,100 lb* (1 860 kg)							41 ft 0 in (12.50 m)	6,200 lb* (2 812 kg)*	3,850 lb* (1 746 kg)
-40 ft (-12 m)	6,700 lb* (3 039 kg)*	5,200 lb* (2 359 kg)									35 ft 1 in (10.69 m)	6,550 lb* (2 971 kg)*	5,100 lb* (2 313 kg)
-45 ft (-13.5 m)											27 ft 3 in (8.31 m)	7,000 lb* (3 175 kg)*	7,000 lb* (3 175 kg)*

NOTE: *Following number indicates hydraulic capacity.

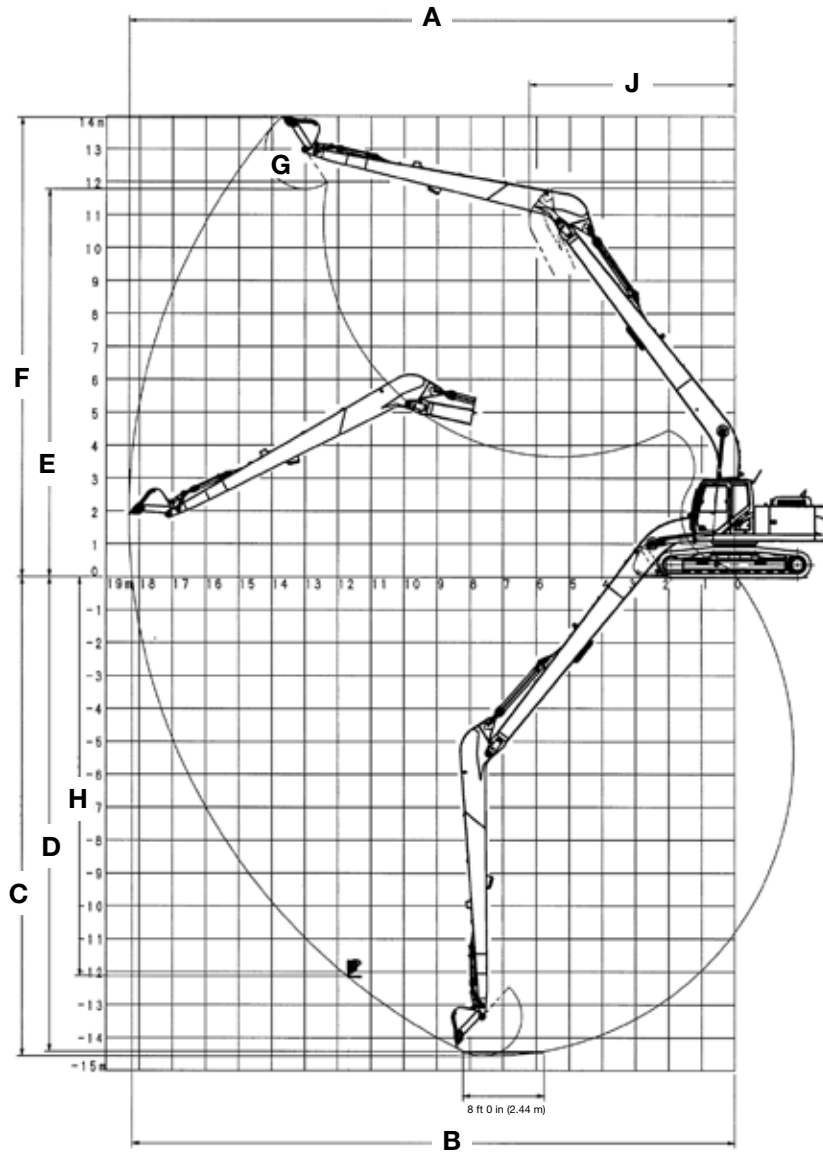


Line drawings are for illustrative purpose only and may not be exact representation of unit.

DIMENSIONS

	26 ft 3 in (8.0 m) Arm
A. Overall height – with attachment	10 ft 3 in (3 130 mm)
B. Cab height	10 ft 0 in (3 050 mm)
C. Overall length – with attachment	47 ft 2 in (14 380 mm)
D. Overall length – without attachment	17 ft 3 in (5 270 mm)
E. Width of upperstructure	9 ft 1 in (2 770 mm)
Width of upperstructure with catwalks	NA
F. Track overall length	15 ft 3 in (4 650 mm)
G. Track overall width with 23.6 in (600 mm) shoes	11 ft 1 in (3 390 mm)
H. Track shoe width	2 ft 7 in (800 mm)
J. Center to center – idler to sprocket	12 ft 7 in (3 840 mm)
K. Upperstructure ground clearance	3 ft 7 in (1 100 mm)
L. Minimum ground clearance	1 ft 6 in (460 mm)
M. Rear tail swing radius	9 ft 8 in (2 950 mm)
Operating weight*	62,001 lb (28 123 kg)
Ground pressure	6.1 psi (0.42 bar)

NOTE: *With 33 ft 10 in (10.30 m) boom, 31.5 in (800 mm) track shoe, 2,544 lb (1 154 kg) bucket, 165 lb (75 kg) operator, full fuel and standard equipment.



PERFORMANCE SPECS

	26 ft 3 in (8.0 m) Arm
A. Maximum dig radius	60 ft 1 in (18 320 mm)
B. Dig radius at groundline	59 ft 9 in (18 220 mm)
C. Maximum dig depth	47 ft 9 in (14 560 mm)
D. Dig depth – 8 ft 0 in (2.44 m) level bottom	47 ft 3 in (14 410 mm)
E. Dump height	38 ft 8 in (11 780 mm)
F. Maximum reach height	45 ft 9 in (13 950 mm)
G. Bucket rotation	178°
H. Maximum vertical wall dig depth	39 ft 10 in (12 130 mm)
J. Minimum swing radius	20 ft 5 in (6 220 mm)
Arm digging force: Standard	9,060 lbf (40.3 kN)
Bucket digging force: Standard	17,310 lbf (77.0 kN)

STANDARD EQUIPMENT

ENGINE

Isuzu four-cylinder turbo-charged diesel
Tier 4 Interim Certified (CEGR)
Electronic fuel injection
High pressure common rail system
Diesel Particulate Defuser System (DPD)
Neutral safety start
Auto-engine warm up
Glow-plug pre-heat
EPF (Engine Protection Feature)
Dual-stage fuel filtration
Double element air filter
Remote oil filter
Green plug oil drain
500-hour engine oil change interval
24-Volt system

FUEL ECONOMY SYSTEMS

Engine Idle / Fuel Economy System
Auto-idle
One-touch idle
Idle shut-down
BEC – boom economy control
AEC – auto economy control
SWC – swing relief control
SSC – spool stroke control

HYDRAULICS

Auto power boost
Auto swing priority
Auto travel speed change
Selectable work modes
ISO pattern controls
Pre-set auxiliary pump settings

HYDRAULICS (continued)

Auxiliary valve
Auxiliary pipe brackets
5,000-hour hydraulic oil change interval
1,000-hour hydraulic filter change interval
SAHR brake

UPPERSTRUCTURE

Right and left side mirrors
Isolation mounted cab (fluid and spring)
Common key vandal locks
Upper mounted work light (70 watt)
Swivel guard belly pan

ATTACHMENTS

Boom – 33 ft 10 in (10.30 m)
Arm – 26 ft 3 in (8.00 m)
Heavy-duty bucket linkage
Boom mounted work light (70 watt)
Auxiliary pipe brackets
Centralized grease fittings
Attachment cushion valve
Arm and boom regeneration

OPERATOR STATION

ROPS protection
FOPS cab top guard (Level 1)
Pressurized cab
One-touch lock front window
AC/heat/defrost w/ auto climate control
Color monitor – 7 in (180 mm)
Interior dome light
Air-suspension seat (cloth)
Adjustable armrests

OPERATOR STATION (continued)

Tilting consoles – 4-position
Low-effort joystick controls
Sliding cockpit – 7 in (180 mm)
Controls pre-wired for auxiliary
Single pedal travel
Straight travel
AM/FM radio w/ antenna and 2 speakers
Aux-in port for personal electronics
Rear-view camera
Anti-theft system (start code system)
Rubber floormat
12-Volt electric outlet
24-Volt cigarette lighter
External rear view mirrors
Windshield wiper / washer
Clear (polycarbonate) roof window w/ sunshade
Cup holder
Storage compartments
Warm / cool storage compartment
On-board diagnostic system
Travel alarm with cancel switch
One key start & lock-up

UNDERCARRIAGE

31.5 in (800 mm) steel shoes, triple semi-grouser
Full overlap turntable bearing tub
Single track chain guides
Hydraulic track adjustment
X-pattern carbody

TELEMATICS

CASE SiteWatch™ Telematics – includes hardware and a 3-yr Advanced data subscription

OPTIONAL EQUIPMENT

HYDRAULICS

Auxiliary hydraulics
Double acting / joystick activated

ATTACHMENTS

Coupler / Case multi-pin grabber
Buckets: Heavy-duty / Extreme-duty
Load holding control
Free swing (order kit through Service Parts)
Hose Burst Check Valve (HBCV)

OPERATOR STATION

Control pattern selector
FOPS cab top guard (Level 2)
Front grill guard – 2 x 2 in (50.8 x 50.8 mm) screen mesh
Front rock guard – vertical bars (two piece) / OPG 1
Front rock guard – vertical bars (fixed / one piece) / OPG 2
Vandal guard
Rain deflector
Sun visor
Side-view camera

UPPERSTRUCTURE

Refueling pump
Rubber bumper guard
(order through Service Parts)

UNDERCARRIAGE

Track guides – triple

BUCKETS

Application	Width	SAE Heaped Capacity
Heavy-duty	30 in to 54 in (0.76 to 1.37 m)	1.22 yd ³ to 2.53 yd ³ (0.93 m ³ to 1.93 m ³)
Extreme-duty	30 in to 48 in (0.76 to 1.22 m)	1.12 yd ³ to 2.04 yd ³ (0.86 m ³ to 1.56 m ³)
Ditching	72 in (1.83 m)	2.20 yd ³ (1.68 m ³)

This page intentionally left blank.

NOTE: All specifications are stated in accordance with SAE Standards or Recommended Practices, where applicable.

NOTE: All engines meet current EPA emissions requirements.

IMPORTANT: Case Construction Inc. reserves the right to change these specifications without notice and without incurring any obligation relating to such change. Case Construction Inc. does not warrant the safety or reliability of attachments from other manufacturers.

CASE is a trademark registered in the United States and many other countries, owned by or licensed to CNH Industrial N.V., its subsidiaries or affiliates. CNH Industrial Capital is a trademark in the United States and many other countries, owned by or licensed to CNH Industrial N.V., its subsidiaries or affiliates.



www.casece.com

Form No. CCE201503CX250CLRLC
Replaces Form No. CCE201207CX250CLCLR

Printed in U.S.A.
CX250C LR LC • Page 7 of 7

© 2015 CNH Industrial America LLC
All Rights Reserved



All Case construction equipment is biodiesel ready.