

ENGINE

Model	Isuzu AM-6HK1X Cooled EGR
Emissions Certification	Tier 4 Interim
Fuel	Requires ultra low-sulfur fuel B5 biodiesel tolerant
Type	Water-cooled, 4-cycle, high pressure common rail system. Turbo-charged w/ air cooled intercooler, DPD system
Cylinders	6-cylinder in-line
Displacement	476 in ³ (7.8 L)
Bore/Stroke	5 x 5 in (115 x 125 mm)
Fuel injection	Direct injection – electronic
Fuel filter	Replaceable, full flow spin-on cartridge
Air filter	Dry type element w/ warning restriction indicator
Oil filter	Replaceable, full flow spin-on cartridge
Engine gradeability:	
Side-to-side	35°
Fore and aft	35°
Net horsepower—SAE J1349 @ 1800 RPM:	207 hp (154 kW)
Net Max. torque—SAE J1349 @ 1500 RPM:	670 lb-ft (909 N·m)
Cooling operating range:	109° to -13° F (43° to -25° C)
Oil	Requires low-ash oil CJ-4

DRIVETRAIN

Travel control	Dual stage relief/ counter balance design
Brakes	Mechanical disc
Service brakes	SAHR disc – each motor
Two speed travel:	
Max high speed	3.4 mph (5.4 kph)
Max low speed	2.0 mph (3.2 kph)
Automatic downshift	
Drawbar pull	52,380 lbf (233 kN)
Gradeability	70% – 35° Slope

ELECTRICAL

Voltage	24 Volts
Alternator rating	50 amp
Batteries	2 x 12 Volt
Battery reserve capacity	128 Ah/5 hour
Work lights	24 Volt
1 boom	70 watt
1 upper	70 watt

CAB AND CONTROLS

Air conditioner output	18,100 BTU/hr
Heater output	20,150 BTU/hr
Sound level inside cab – ISO6395	70 dBA
Electrical outlet	12 Volt
Cab interior light	10 watt
Rear view camera	Standard
Seat	Air-suspension

ATTACHMENT

Boom	20 ft 2 in (6 150 mm)
Arm options	10 ft 5 in (3 180 mm) 8 ft 8 in (2 650 mm) 12 ft 0 in (3 660 mm)
Bucket digging force*	39,252 lbf (174.6 kN)
w/ Auto Power-Boost	42,759 lbf (190.2 kN)

NOTE: *Digging force ratings based on ISO6015

GROUND PRESSURE

@ Standard operating weight 6.2 psi (0.43 bar)
w/ 31.5 in (800 mm) triple semi-grouser shoes

HYDRAULICS

System design	Open center
Main pumps	Two variable displacement/ axial piston
Max rated flow	64.2 gpm (243 L/min)
System pressures	
Boom, arm and bucket	4,975 psi (343 bar)
w/ power boost	5,410 psi (373 bar)
Travel circuits	4,975 psi (343 bar)
Swing circuits	4,264 psi (294 bar)
Pilot pump	1 x gear design
Max capacity	7.1 gpm (27 L/min)
Controls	w/ boom/arm holding valve
Right track travel, bucket, boom and arm acceleration.	Four-spool section
Left track travel, bucket, boom and arm acceleration.	Five-spool section
Work Mode Selections	SP: Speed Priority H: Heavy Duty A: Automatic
Swing motor	Fixed displacement axial piston
Swing final drive	Planetary gear reduction
Travel motor	Two-speed independent travel/axial piston

HYDRAULIC CYLINDERS

Boom cylinders	Two (2)
Cylinder Bore	5.5 in (140 mm)
Cylinder rod diameter	3.7 in (95 mm)
Cylinder stroke	53.9 in (1 369 mm)
Arm cylinder	One (1)
Cylinder Bore	5.9 in (150 mm)
Cylinder rod diameter	4.1 in (105 mm)
Cylinder stroke	61.8 in (1 569 mm)
Bucket cylinder	One (1)
Cylinder Bore	5.3 in (135 mm)
Cylinder rod diameter	3.5 in (90 mm)
Cylinder stroke	42.4 in (1 078 mm)

SERVICE CAPACITIES

Fuel tank	119 gal (450 L)
Hydraulic system	79 gal (300 L)
Hydraulic tank	39 gal (147 L)
Engine oil w/ filter	10 gal (39 L)
Swing drive	8 qt (7.9 L)
Final drive	10 qt (9.1 L)
Cooling system	8 gal (30.8 L)

OPERATING WEIGHT

Operating weight	65,901 lb (29 892 kg)
w/ shoes	2 ft 7 in (800 mm)
w/ boom	20 ft 2 in (6 150 mm)
w/ arm	10 ft 5 in (3 180 mm)
w/ bucket	1,940 lb (880 kg)
w/ counterweight	11,684 lb (5 300 kg)

NOTE: w/ operator/full fuel/standard equipment

OTHER SPECIFICATIONS

Swing speed	0 - 10 RPM
Swing torque	68,151 lb-ft (92 400 N·m)
Swing brake	Mechanical disc
Undercarriage:	
Length	15 ft 11 in (4 850 mm)
Track gauge	8 ft 6 in (2 600 mm)
Carrier rollers	2
Track rollers	9
Shoes – triple grouser	50
Shoe width – Std.	2 ft 7 in (800 mm)
Link pitch	8 in (203 mm)
Track	
Chain	Grease lubricated/strutted
Guides	Single
Adjustment	Hydraulic

LIFT CAPACITIES

10 ft 5 in (3.18 m) Lift capacities using a 1,778 lb (806 kg) bucket, 11,681 lb (5 300 kg) counterweight.

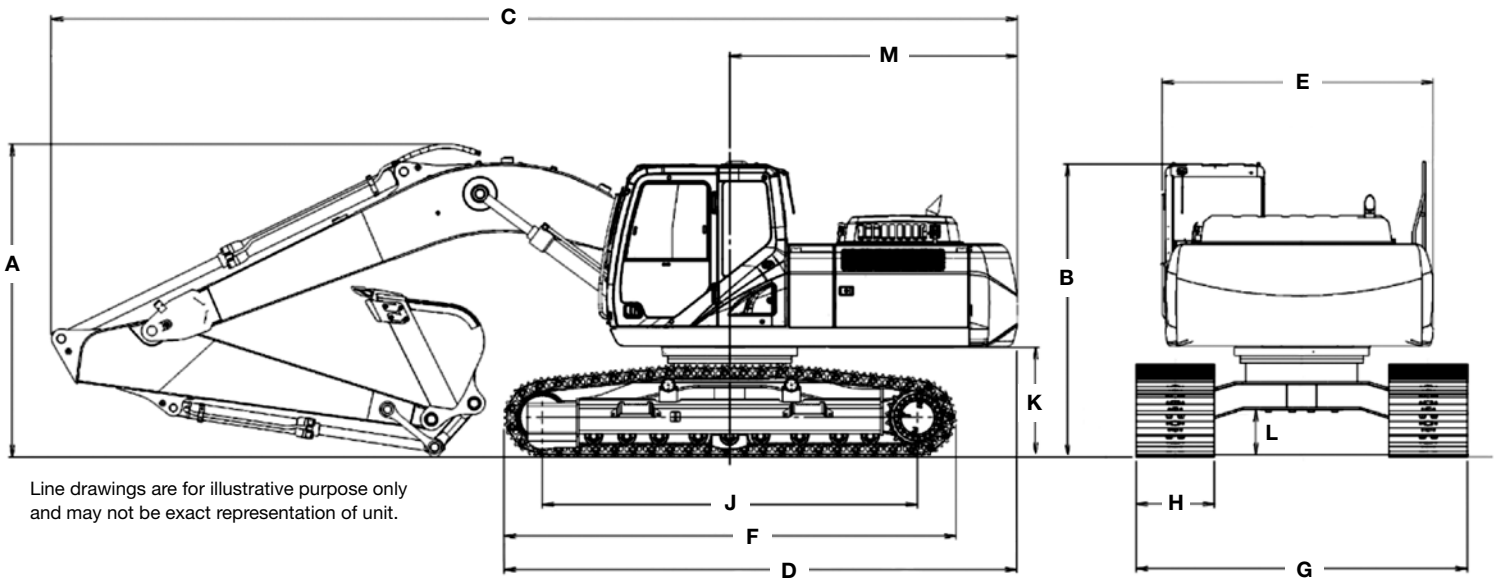
Load (Lift Point) Height	5 ft (1.5 m)		10 ft (3 m)		15 ft (4.5 m)		20 ft (6 m)		25 ft (7.5 m)		30 ft (9 m)		MAXIMUM REACH			
	END	SIDE	END	SIDE	END	SIDE	END	SIDE	END	SIDE	END	SIDE	@	END	SIDE	
+25 ft (7.5 m)										10,950 lb* (4 967 kg)*	10,950 lb* (4 967 kg)*			28 ft 4 in (8.64 m)	7,250 lb* (3 289 kg)*	7,250 lb* (3 289 kg)*
+20 ft (6 m)										12,400 lb* (5 625 kg)*	12,350 lb (5 602 kg)	9,550 lb* (4 332 kg)*	8,850 lb (4 014 kg)	31 ft 3 in (9.53 m)	7,050 lb* (3 198 kg)*	7,050 lb* (3 198 kg)*
+15 ft (4.5 m)								17,550 lb* (7 961 kg)*	17,050 lb (7 734 kg)	15,750 lb* (7 144 kg)*	12,000 lb (5 443 kg)	12,250 lb* (5 557 kg)*	8,700 lb (3 946 kg)	33 ft 0 in (10.06 m)	7,150 lb* (3 243 kg)*	7,150 lb* (3 243 kg)*
+10 ft (3 m)			39,550 lb* (17 940 kg)*	39,550 lb* (17 940 kg)*	27,800 lb* (12 610 kg)*	25,850 lb (11 725 kg)	21,100 lb* (9 571 kg)*	16,450 lb (7 462 kg)	17,450 lb* (7 915 kg)*	11,450 lb (5 194 kg)	13,000 lb (5 897 kg)	8,400 lb (3 810 kg)		33 ft 9 in (10.29 m)	7,400 lb* (3 357 kg)*	6,750 lb (3 062 kg)
+5 ft (1.5 m)			17,100 lb* (7 756 kg)*	17,100 lb* (7 756 kg)*	33,500 lb* (15 195 kg)*	24,000 lb (10 886 kg)	24,050 lb* (10 909 kg)*	15,500 lb (7 031 kg)	17,050 lb (7 734 kg)	10,950 lb (4 967 kg)	12,700 lb (5 761 kg)	8,150 lb (3 697 kg)		33 ft 9 in (10.29 m)	7,900 lb* (3 583 kg)*	6,650 lb (3 016 kg)
Groundline			18,750 lb* (8 505 kg)*	18,750 lb* (8 505 kg)*	35,750 lb* (16 216 kg)*	22,700 lb (10 297 kg)	23,600 lb (10 705 kg)	14,750 lb (6 690 kg)	17,550 lb (7 915 kg)	10,550 lb (4 785 kg)	12,450 lb (5 647 kg)	7,900 lb (3 583 kg)		32 ft 11 in (10.03 m)	8,700 lb* (3 946 kg)*	6,800 lb (3 084 kg)
-5 ft (-1.5 m)	18,400 lb* (8 346 kg)*	18,400 lb* (8 346 kg)*	24,550 lb* (11 136 kg)*	24,550 lb* (11 136 kg)*	35,900 lb* (16 284 kg)*	22,300 lb (10 115 kg)	23,150 lb (10 501 kg)	14,350 lb (6 509 kg)	16,300 lb (7 394 kg)	10,300 lb (4 672 kg)	12,350 lb (5 602 kg)	7,800 lb (3 538 kg)		31 ft 4 in (9.55 m)	10,000 lb* (4 536 kg)*	7,350 lb (3 334 kg)
-10 ft (-3 m)	23,700 lb* (10 750 kg)*	23,700 lb* (10 750 kg)*	32,850 lb* (14 901 kg)*	32,850 lb* (14 901 kg)*	34,300 lb* (15 558 kg)*	22,450 lb* (10 183 kg)*	23,150 lb (10 501 kg)	14,400 lb (6 532 kg)	16,350 lb (7 416 kg)	10,350 lb (4 695 kg)				28 ft 8 in (8.74 m)	12,300 lb* (5 579 kg)*	8,400 lb (3 810 kg)
-15 ft (-4.5 m)	32,000 lb* (14 515 kg)*	32,000 lb* (14 515 kg)*	42,450 lb* (19 255 kg)*	42,450 lb* (19 255 kg)*	30,050 lb* (13 630 kg)*	22,950 lb (10 410 kg)	22,250 lb* (10 092 kg)*	14,800 lb (6 713 kg)						24 ft 11 in (7.59 m)	15,300 lb* (6 940 kg)*	10,550 lb (4 785 kg)
-20 ft (-6 m)			29,550 lb* (13 404 kg)*	29,550 lb* (13 404 kg)*	21,400 lb* (9 707 kg)*	21,400 lb* (9 707 kg)*								19 ft 5 in (5.92 m)	14,350 lb* (6 509 kg)*	14,350 lb* (6 509 kg)*

8 ft 8 in (2.65 m) Lift capacities using a 1,914 lb (866 kg) bucket, 11,681 lb (5 300 kg) counterweight.

Load (Lift Point) Height	5 ft (1.5 m)		10 ft (3 m)		15 ft (4.5 m)		20 ft (6 m)		25 ft (7.5 m)		30 ft (9 m)		MAXIMUM REACH				
	END	SIDE	END	SIDE	END	SIDE	END	SIDE	END	SIDE	END	SIDE	@	END	SIDE		
+25 ft (7.5 m)										12,150 lb* (5 511 kg)*	12,150 lb* (5 511 kg)*			26 ft 5 in (8.05 m)	9,350 lb* (4 241 kg)*	9,350 lb* (4 241 kg)*	
+20 ft (6 m)								16,900 lb* (7 666 kg)*	16,900 lb* (7 666 kg)*	14,650 lb* (6 645 kg)*	12,150 lb (5 511 kg)			29 ft 6 in (8.99 m)	9,000 lb* (4 082 kg)*	8,900 lb (4 037 kg)	
+15 ft (4.5 m)							19,900 lb* (9 026 kg)*	19,900 lb* (9 026 kg)*	18,950 lb* (8 596 kg)*	17,050 lb (7 734 kg)	16,850 lb* (7 643 kg)*	11,750 lb (5 330 kg)	13,100 lb (5 942 kg)	8,550 lb (3 878 kg)	31 ft 4 in (9.55 m)	9,050 lb* (4 105 kg)*	7,800 lb (3 538 kg)
+10 ft (3 m)							29,350 lb* (13 313 kg)*	25,350 lb (11 499 kg)	22,250 lb* (10 092 kg)*	16,150 lb (7 326 kg)	17,400 lb (7 893 kg)	11,300 lb (5 126 kg)	12,850 lb (5 829 kg)	8,300 lb (3 765 kg)	32 ft 3 in (9.83 m)	9,400 lb* (4 264 kg)*	7,250 lb (3 289 kg)
+5 ft (1.5 m)							34,050 lb* (15 445 kg)*	23,500 lb (10 659 kg)	24,150 lb* (10 954 kg)*	15,250 lb (6 917 kg)	16,900 lb (7 666 kg)	10,850 lb (4 921 kg)	12,600 lb (5 715 kg)	8,050 lb (3 651 kg)	32 ft 2 in (9.80 m)	10,000 lb* (4 536 kg)*	7,150 lb (3 243 kg)
Groundline			17,400 lb* (7 893 kg)*	17,400 lb* (7 893 kg)*	35,900 lb* (16 284 kg)*	22,500 lb (10 206 kg)	23,500 lb (10 659 kg)	14,650 lb (6 645 kg)	16,500 lb (7 484 kg)	10,500 lb (4 763 kg)	12,400 lb (5 625 kg)	7,900 lb (3 583 kg)		31 ft 4 in (9.55 m)	10,950 lb* (4 967 kg)*	7,350 lb (3 334 kg)	
-5 ft (-1.5 m)	19,200 lb* (8 709 kg)*	19,200 lb* (8 709 kg)*	25,150 lb* (11 408 kg)*	25,150 lb* (11 408 kg)*	35,650 lb* (16 171 kg)*	22,400 lb (10 160 kg)	23,150 lb (10 501 kg)	14,400 lb (6 532 kg)	16,300 lb (7 394 kg)	10,300 lb (4 672 kg)				29 ft 7 in (9.02 m)	12,600 lb* (5 715 kg)*	8,000 lb (3 629 kg)	
-10 ft (-3 m)	26,200 lb* (11 884 kg)*	26,200 lb* (11 884 kg)*	35,700 lb* (16 193 kg)*	35,700 lb* (16 193 kg)*	33,150 lb* (15 037 kg)*	22,650 lb (10 274 kg)	23,300 lb (10 569 kg)	14,550 lb (6 600 kg)	16,500 lb* (7 484 kg)*	10,550 lb (4 785 kg)				26 ft 9 in (8.15 m)	14,650 lb (6 645 kg)	9,350 lb (4 241 kg)	
-15 ft (-4.5 m)			38,050 lb* (17 259 kg)*	38,050 lb* (17 259 kg)*	27,750 lb* (12 587 kg)*	23,250 lb (10 546 kg)	20,350 lb* (9 231 kg)*	15,100 lb (6 849 kg)						22 ft 9 in (6.93 m)	15,400 lb* (6 985 kg)*	12,150 lb (5 511 kg)	

12 ft 0 in (3.66 m) Lift capacities using a 1,741 lb (780 kg) bucket, 11,681 lb (5 300 kg) counterweight.

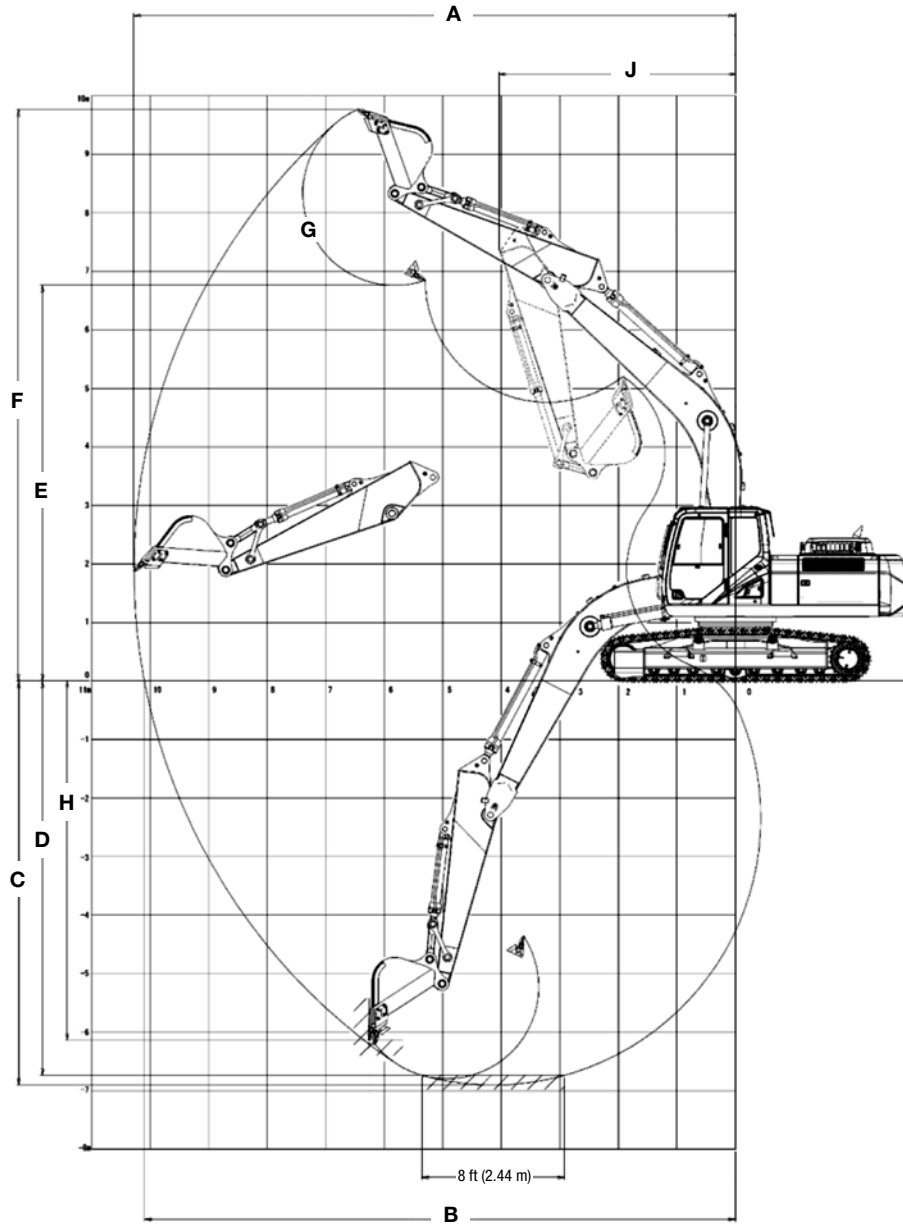
Load (Lift Point) Height	5 ft (1.5 m)		10 ft (3 m)		15 ft (4.5 m)		20 ft (6 m)		25 ft (7.5 m)		30 ft (9 m)		35 ft (10.5 m)		MAXIMUM REACH		
	END	SIDE	END	SIDE	END	SIDE	END	SIDE	END	SIDE	END	SIDE	END	SIDE	@	END	SIDE
+30 ft (9 m)															26 ft 1 in (7.95 m)	6,600 lb* (2 994 kg)*	6,600 lb* (2 994 kg)*
+25 ft (7.5 m)									9,400 lb* (4 264 kg)*	9,400 lb* (4 264 kg)*	6,550 lb* (2 971 kg)*	6,550 lb* (2 971 kg)*			30 ft 3 in (9.22 m)	6,050 lb* (2 744 kg)*	6,050 lb* (2 744 kg)*
+20 ft (6 m)									11,550 lb* (5 239 kg)*	11,550 lb* (5 239 kg)*	9,550 lb* (4 332 kg)*	8,950 lb (4 060 kg)			33 ft 0 in (10.06 m)	5,850 lb* (2 654 kg)*	5,850 lb* (2 654 kg)*
+15 ft (4.5 m)									14,150 lb* (6 418 kg)*	12,100 lb (5 488 kg)	11,250 lb* (5 103 kg)*	8,750 lb (3 969 kg)			34 ft 6 in (10.52 m)	5,900 lb* (2 676 kg)*	5,900 lb* (2 676 kg)*
+10 ft (3 m)			20,550 lb* (9 321 kg)*	20,550 lb* (9 321 kg)*	25,500 lb* (11 567 kg)*	25,500 lb* (11 567 kg)*	19,850 lb* (9 004 kg)*	16,650 lb (7 552 kg)	16,600 lb* (7 530 kg)*	11,550 lb (5 239 kg)	13,000 lb (5 897 kg)	8,450 lb (3 833 kg)	7,100 lb* (3 221 kg)*	6,300 lb (2 858 kg)	35 ft 4 in (10.77 m)	6,100 lb* (2 767 kg)*	6,100 lb* (2 767 kg)*
+5 ft (1.5 m)			22,800 lb* (10 342 kg)*	22,800 lb* (10 342 kg)*	31,700 lb* (14 379 kg)*	24,400 lb (11 068 kg)	23,000 lb* (10 433 kg)*	15,600 lb (7 076 kg)	17,100 lb (7 756 kg)	11,000 lb (4 990 kg)	12,650 lb (5 738 kg)	8,100 lb (3 674 kg)	7,500 lb* (3 402 kg)*	6,150 lb (2 790 kg)	35 ft 3 in (10.74 m)	6,500 lb* (2 948 kg)*	6,050 lb (2 744 kg)
Groundline	8,050 lb* (3 651 kg)*	8,050 lb* (3 651 kg)*	19,000 lb* (8 618 kg)*	19,000 lb* (8 618 kg)*	35,250 lb* (15 989 kg)*	22,800 lb (10 342 kg)	23,650 lb (10 727 kg)	14,750 lb (6 690 kg)	16,550 lb (7 507 kg)	10,500 lb (4 763 kg)	12,350 lb (5 602 kg)	7,850 lb (3 561 kg)		34 ft 6 in (10.52 m)	7,100 lb* (3 221 kg)*	6,200 lb (2 812 kg)	
-5 ft (-1.5 m)	16,000 lb* (7 257 kg)*	16,000 lb* (7 257 kg)*	0 lb* (0 kg)*	23,150 lb* (10 501 kg)*	35,800 lb* (16 239 kg)*	22,100 lb (10 024 kg)	23,050 lb (10 455 kg)	14,250 lb (6 464 kg)	16,150 lb (7 326 kg)	10,150 lb (4 604 kg)	12,200 lb (5 534 kg)	7,650 lb (3 470 kg)		33 ft 0 in (10.06 m)	8,100 lb* (3 674 kg)*	6,000 lb (2 994 kg)	
-10 ft (-3 m)	21,200 lb* (9 616 kg)*	21,200 lb* (9 616 kg)*	30,000 lb* (13 608 kg)*	30,000 lb* (13 608 kg)*	34,850 lb* (15 808 kg)*	22,150 lb (10 047 kg)	22,950 lb (10 410 kg)	14,200 lb (6 441 kg)	16,150 lb (7 326 kg)	10,150 lb (4 604 kg)	12,200 lb (5 534 kg)	7,750 lb (3 515 kg)		30 ft 6 in (9.30 m)	9,700 lb* (4 400 kg)*	7,500 lb (3 402 kg)	
-15 ft (-4.5 m)	28,250 lb* (12 814 kg)*	28,250 lb* (12 814 kg)*	41,200 lb* (18 688 kg)*	41,200 lb* (18 688 kg)*	31,550 lb* (14 311 kg)*	22,500 lb (10 206 kg)	22,950 lb (10 410 kg)	14,450 lb (6 554 kg)	16,300 lb (7 394 kg)	10,500 lb (4 763 kg)				27 ft 0 in (8.23 m)	12,800 lb* (5 806 kg)*	9,150 lb (4 150 kg)	
-20 ft (-6 m)			34,600 lb* (15 694 kg)*	34,600 lb* (15 694 kg)*	24,650 lb* (11 181 kg)*	22,850 lb (10 365 kg)	17,450 lb* (7 915 kg)*	14,850 lb (6 736 kg)						22 ft 0 in (6.71 m)	14,100 lb* (6 396 kg)*	12,750 lb (5 783 kg)	



DIMENSIONS

	10 ft 5 in (3.18 m) Arm	8 ft 8 in (2.65 m) Arm	12 ft 0 in (3.66 m) Arm
A. Overall height – with attachment	10 ft 8 in (3 260 mm)	10 ft 11 in (3 340 mm)	11 ft 4 in (3 460 mm)
B. Cab height	10 ft 3 in (3 120 mm)	10 ft 3 in (3 120 mm)	10 ft 3 in (3 120 mm)
C. Overall length – with attachment	34 ft 3 in (10 450 mm)	34 ft 5 in (10 480 mm)	34 ft 4 in (10 470 mm)
D. Overall length – without attachment	18 ft 4 in (5 580 mm)	18 ft 4 in (5 580 mm)	18 ft 4 in (5 580 mm)
E. Width of upper structure	9 ft 6 in (2 890 mm)	9 ft 6 in (2 890 mm)	9 ft 6 in (2 890 mm)
Width of upper structure with catwalks	NA	NA	NA
F. Track overall length	15 ft 11 in (4 850 mm)	15 ft 11 in (4 850 mm)	15 ft 11 in (4 850 mm)
G. Track overall width with 23.6 in (600 mm) shoes	11 ft 2 in (3 400 mm)	11 ft 2 in (3 400 mm)	11 ft 2 in (3 400 mm)
H. Track shoe width	2 ft 7 in (800 mm)	2 ft 7 in (800 mm)	2 ft 7 in (800 mm)
J. Center to center – idler to sprocket	13 ft 1 in (3 980 mm)	13 ft 1 in (3 980 mm)	13 ft 1 in (3 980 mm)
K. Upper structure ground clearance	3 ft 10 in (1 180 mm)	3 ft 10 in (1 180 mm)	3 ft 10 in (1 180 mm)
L. Minimum ground clearance	1 ft 7 in (470 mm)	1 ft 7 in (470 mm)	1 ft 7 in (470 mm)
M. Rear tail swing radius	10 ft 4 in (3 160 mm)	10 ft 4 in (3 160 mm)	10 ft 4 in (3 160 mm)
Operating weight*	65,901 lb (29 892 kg)	65,680 lb (29 792 kg)	66,187 lb (30 022 kg)
Ground pressure	6.2 psi (0.43 bar)	6.2 psi (0.43 bar)	6.2 psi (0.43 bar)

NOTE: *Machine equipped with 20 ft 2 in (6.15 m) boom



PERFORMANCE SPECS

	10 ft 5 in (3.18 m) Arm	8 ft 8 in (2.65 m) Arm	12 ft 0 in (3.66 m) Arm
A. Maximum dig radius	35 ft 0 in (10 670 mm)	33 ft 6 in (10 220 mm)	36 ft 7 in (11 160 mm)
B. Dig radius at groundline	34 ft 5 in (10 500 mm)	32 ft 11 in (10 040 mm)	36 ft 1 in (10 990 mm)
C. Maximum dig depth	23 ft 4 in (7 100 mm)	21 ft 7 in (6 570 mm)	24 ft 10 in (7 580 mm)
D. Dig depth – 8 ft 0 in (2.44 m) level bottom	22 ft 9 in (6 940 mm)	21 ft 0 in (6 390 mm)	24 ft 5 in (7 440 mm)
E. Dump height	23 ft 3 in (7 090 mm)	22 ft 9 in (6 940 mm)	24 ft 3 in (7 390 mm)
F. Maximum reach height	33 ft 0 in (10 060 mm)	32 ft 7 in (9 930 mm)	0 ft 0 in (0 mm)
G. Bucket rotation	176°	176°	176°
H. Maximum vertical wall dig depth	20 ft 1 in (6 120 mm)	18 ft 11 in (5 760 mm)	22 ft 1 in (6 720 mm)
J. Minimum swing radius	12 ft 10 in (3 920 mm)	13 ft 1 in (4 000 mm)	13 ft 1 in (4 000 mm)
Arm digging force:			
Standard	27,337 lb (121.6 kN)	31,968 lb (142.2 kN)	24,684 lb (109.8 kN)
Power boots	29,765 lb (132.4 kN)	34,396 lb (153.0 kN)	26,685 lb (118.7 kN)
Bucket digging force:			
Standard	39,252 lb (174.6 kN)	39,252 lb (174.6 kN)	39,252 lb (174.6 kN)
Power boost	42,759 lb (190.2 kN)	42,759 lb (190.2 kN)	42,759 lb (190.2 kN)

STANDARD EQUIPMENT

ENGINE

Isuzu six-cylinder turbo-charged diesel
Tier 4 Interim Certified (CEGR)
Electronic fuel injection
High pressure common rail system
Diesel Particulate Defuser System (DPD)
Neutral safety start
Auto-engine warm up
Glow-plug pre-heat
FEA (Fuel Economy System)
EPF (Engine Protection Feature)
Dual-stage fuel filtration
Dual element air filter
Remote oil filter
Green plug oil drain
500-hour engine oil change interval
24-Volt system

FUEL ECONOMY SYSTEMS

Engine Idle / Fuel Economy System
Auto-idle
One-touch idle
Idle shut-down
BEC—boom economy control
AEC—auto economy control
SWC—swing relief control
SSC—spool stroke control

HYDRAULICS

Auto power boost
Auto swing priority
Auto travel speed change
Selectable work modes
ISO pattern controls

HYDRAULICS (continued)

Pre-set auxiliary pump settings
Auxiliary valve
Auxiliary pipe brackets
5,000 hour hydraulic oil change interval
1,000 hour hydraulic filter change interval
Hydraulic track adjustment
SAHR brake

UPPERSTRUCTURE

Right and left side mirrors
Isolation mounted cab (fluid and spring)
Common key vandal locks
Upper mounted work light (70 watt)
Swivel guard belly pan

ATTACHMENTS

Boom—20 ft 2 in (6.15 m)
Arm—10 ft 5 in (3.18 m)
Heavy-duty bucket linkage
Boom mounted work light (70 watt)
Auxiliary pipe brackets
Centralized grease fittings
Attachment cushion valve
Arm and boom regeneration

OPERATOR STATION

ROPS protection
FOPS cab top guard (Level 1)
Pressurized cab
One-touch lock front window
AC/heat/defrost w/ auto climate control
Color monitor—7 in (180 mm)
Interior dome light

OPERATOR STATION (continued)

Air-suspension seat (cloth)
Seat-belt
Adjustable armrests
Tilting consoles—4-position
Low-effort joystick controls
Sliding cockpit—7 in (180 mm)
Controls pre-wired for auxiliary
Single pedal travel
Straight travel
AM/FM radio w/ antenna and 2 speakers
Aux-in port for personal electronics
Rear-view camera
Anti-theft system (start code system)
Rubber floor mat
12-Volt electric outlet
24-Volt cigarette lighter
External rear view mirrors
Windshield wiper / washer
Clear (polycarbonate) roof window w/ sunshade
Cup holder
Storage compartments
Warm / cool storage compartment
On-board diagnostic system
Travel alarm with cancel switch
One key start & lock-up

UNDERCARRIAGE

31.5 in (800 mm) steel shoes, triple semi-grouser
Full overlap turntable bearing tub
Single track chain guides
Hydraulic track adjustment
X-pattern carbody

TELEMATICS

CASE SiteWatch™ Telematics – includes hardware and a 3-yr Advanced data subscription

OPTIONAL EQUIPMENT

HYDRAULICS

Auxiliary Hydraulics
Single acting / joystick activated
Double acting / joystick activated
Multi-function w/ pressure control / joystick activated (five programmable pre-sets on monitor)
Secondary low-flow / joystick activated

ATTACHMENTS

Arm—8 ft 8 in (2.65 m)
Arm—12 ft 0 in (3.66 m)
Coupler / Case multi-pin grabber
Buckets: Heavy-duty / Extreme-duty
Load holding control
Free swing (order kit through Service Parts)

BUCKETS

OPERATOR STATION

Control pattern selector
FOPS cab top guard (Level 2)
Front grill guard—2 x 2 in (50.8 x 50.8 mm) screen mesh
Front rock guard—vertical bars (two piece) / OPG 1
Front rock guard—vertical bars (one piece) / OPG 2
Vandal guard
Rain deflector
Sun visor
Side-view camera

UPPERSTRUCTURE

Refueling pump
Rubber bumper guard (order through Service Parts)

UNDERCARRIAGE

23.6 in (600 mm) steel shoes, triple semi-grouser
27.6 in (700 mm) steel shoes, triple semi-grouser
Track guides—triple

Application	Width	SAE Heaped Capacity
General purpose	30 in to 60 in (0.76 to 1.52 m)	1.26 yd ³ to 2.93 yd ³ (0.96 m ³ to 2.24 m ³)
Heavy-duty	30 in to 54 in (0.76 to 1.37 m)	1.22 yd ³ to 2.53 yd ³ (0.93 m ³ to 1.93 m ³)
Extreme-duty	30 in to 48 in (0.76 to 1.22 m)	1.12 yd ³ to 2.04 yd ³ (0.86 m ³ to 1.56 m ³)
Ditching	72 in (1.83 m)	2.20 yd ³ (1.68 m ³)

This page intentionally left blank.



NOTE: All specifications are stated in accordance with SAE Standards or Recommended Practices, where applicable.

NOTE: All engines meet current EPA emissions requirements.

IMPORTANT: Case Construction Equipment Inc. reserves the right to change these specifications without notice and without incurring any obligation relating to such change. Case Construction Equipment Inc. does not warrant the safety or reliability of attachments from other manufacturers.

CASE is a trademark registered in the United States and many other countries, owned by or licensed to CNH Industrial N.V., its subsidiaries or affiliates. CNH Industrial Capital is a trademark in the United States and many other countries, owned by or licensed to CNH Industrial N.V., its subsidiaries or affiliates.



www.casece.com

