

### ENGINE

Model	Isuzu AM-6HK1X Cooled EGR
Emissions Certification	Tier 4 Interim
Fuel	Requires ultra low-sulfur fuel B5 biodiesel tolerant
Type	Water-cooled, 4-cycle, high pressure common rail system. Turbo-charged with air cooled intercooler, DPD system
Cylinders	6-cylinder in-line
Displacement	476 in <sup>3</sup> (7.8 L)
Bore/Stroke	5 x 5 in (115 x 125 mm)
Fuel injection	Direct injection – electronic
Fuel filter	Replaceable, full flow spin-on cartridge
Air filter	Dry type element w/ warning restriction indicator
Oil filter	Replaceable, full flow spin-on cartridge
Engine gradeability:	
Side-to-side	35°
Fore and aft	35°
Net horsepower – SAE J1349 @ 1900 RPM:	266 hp (198 kW)
Net max. torque – SAE J1349 @ 1500 RPM:	769 lb-ft (1 043 N·m)
Cooling operating range:	109° to -13°F (43° to -25°C)
Oil	Requires low-ash oil CJ-4

### DRIVETRAIN

Travel control:	Dual stage relief/ counter balance design
Brakes	Mechanical disc
Service brakes	SAHR disc – each motor
Two speed travel:	
Max. high speed	3.4 mph (5.4 kph)
Max. low speed	2.0 mph (3.2 kph)
Automatic downshift	
Drawbar pull	59,125 lbf (263 kN)
Gradeability	70% – 35° Slope

### ELECTRICAL

Voltage	24 Volts
Alternator rating	50 amp
Batteries	2 x 12 Volt
Battery reserve capacity	128 Ah/5 hour
Work lights	24 Volt
1 boom	70 watt
1 upper	70 watt

### OPERATOR ENVIRONMENT

Air conditioner output	18,100 BTU/hr
Heater output	20,150 BTU/hr
Sound level inside cab – ISO6395	70 dBA
Electrical outlet	12 Volt
Cab interior light	10 watt
Rear view camera	Standard
Seat	Air-suspension

### ATTACHMENT

Boom	21 ft 2 in (6 450 mm)
Arm options:	
Standard	10 ft 8 in (3 250 mm)
Short	8 ft 8 in (2 630 mm)
Long	13 ft 3 in (4 040 mm)
Bucket digging force*	51,436 lbf (228.8 kN)
w/ Auto Power-Boost	55,842 lbf (248.4 kN)

NOTE: \*Digging force ratings based on ISO6015

### OPERATING WEIGHT

Operating weight	79,999 lb (36 287 kg)
w/ shoes	2 ft 7 in (800 mm)
w/ boom	21 ft 2 in (6 450 mm)
w/ arm	10 ft 8 in (3 250 mm)
w/ bucket	2,579 lb (1 170 kg)
w/ counterweight	14,110 lb (6 400 kg)

NOTE: w/ operator/full fuel/standard equipment

### HYDRAULICS

System design	Open center
Main pumps	Two-variable displacement/ axial piston
Max. rated flow	75.3 gpm (285 L/min)
System pressures:	
Boom, arm and bucket	4,975 psi (343 bar)
w/ power boost	5,410 psi (373 bar)
Travel circuits	4,975 psi (343 bar)
Swing circuits	4,496 psi (310 bar)
Pilot pump	1 x gear design
Max. capacity	7.5 gpm (28.5 L/min)
Controls	w/ boom/arm holding valve
Right track travel, bucket, boom and arm acceleration.	Four-spool section
Left track travel, bucket, boom and arm acceleration.	Five-spool section
Work mode selections	SP: Speed Priority H: Heavy Duty A: Automatic
Swing motor	Fixed displacement axial piston
Swing final drive	Planetary gear reduction
Travel motor	Two-speed independent travel/axial piston

### HYDRAULIC CYLINDERS

Boom cylinders	Two (2)
Cylinder Bore	5.7 in (145 mm)
Cylinder rod diameter	3.9 in (100 mm)
Cylinder stroke	58.9 in (1 495 mm)
Arm cylinder	One (1)
Cylinder Bore	6.7 in (170 mm)
Cylinder rod diameter	4.7 in (120 mm)
Cylinder stroke	68.8 in (1 748 mm)
Bucket cylinder	One (1)
Cylinder Bore	5.9 in (150 mm)
Cylinder rod diameter	4.1 in (105 mm)
Cylinder stroke	47.6 in (1 210 mm)

### SERVICE CAPACITIES

Fuel tank	153 gal (580 L)
Hydraulic system	92 gal (350 L)
Hydraulic tank	46 gal (175 L)
Engine oil w/ filter	13 gal (49 L)
Swing drive	5 qt (5 L)
Final drive	12 qt (11 L)
Cooling system	9 gal (35 L)

### OTHER SPECIFICATIONS

Swing speed	0 – 9.7 RPM
Swing torque	82,607 lb-ft (112 000 N·m)
Swing brake	Mechanical disc
Undercarriage:	
Length	16 ft 4 in (4 980 mm)
Track gauge	8 ft 6 in (2 600 mm)
Carrier rollers	2
Track rollers	8
Shoes – triple grouser	48
Shoe width – Std.	2 ft 7 in (800 mm)
Link pitch	9 in (216 mm)
Track:	
Chain	Grease lubricated/strutted
Guides	Single
Adjustment	Hydraulic
Ground pressure @ std. operating weight w/ 31.5 in (800 mm) triple semi-grouser shoes:	7.4 psi (0.51 bar)

# CX350C LIFT CAPACITIES

**10 ft 8 in (3.25 m)** Lift capacities using a 2,577 lb (1 169 kg) bucket, 14,106 lb (6 400 kg) counterweight.

Load (Lift Point) Height	5 ft (1.5 m)		10 ft (3 m)		15 ft (4.5 m)		20 ft (6 m)		25 ft (7.5 m)		30 ft (9 m)		35 ft (10.5 m)		MAXIMUM REACH		
	END	SIDE	END	SIDE	END	SIDE	END	SIDE	END	SIDE	END	SIDE	END	SIDE	@	END	SIDE
+30 ft (9 m)															26 ft 6 in (8.08 m)	8,600 lb* (3 901 kg)*	8,600 lb* (3 901 kg)*
+25 ft (7.5 m)										14,100 lb* (6 396 kg)*	14,100 lb* (6 396 kg)*	9,700 lb* (4 400 kg)*	9,700 lb* (4 400 kg)*		30 ft 6 in (9.30 m)	8,050 lb* (3 651 kg)*	8,050 lb* (3 651 kg)*
+20 ft (6 m)										16,250 lb* (7 371 kg)*	15,800 lb* (7 167 kg)*	14,750 lb* (6 690 kg)*	11,550 lb (5 239 kg)		33 ft 0 in (10.06 m)	7,850 lb* (3 561 kg)*	7,850 lb* (3 561 kg)*
+15 ft (4.5 m)								20,900 lb* (9 480 kg)*	20,900 lb* (9 480 kg)*	17,850 lb* (8 097 kg)*	15,400 lb (6 985 kg)	15,850 lb* (7 189 kg)*	11,200 lb (5 080 kg)		34 ft 7 in (10.54 m)	7,900 lb* (3 583 kg)*	7,900 lb* (3 583 kg)*
+10 ft (3 m)			46,800 lb* (21 228 kg)*	46,800 lb* (21 228 kg)*	34,000 lb* (15 422 kg)*	32,450 lb (14 719 kg)	24,800 lb* (11 249 kg)*	21,000 lb (9 525 kg)	20,100 lb* (9 117 kg)*	14,700 lb (6 668 kg)	16,700 lb (7 575 kg)	10,800 lb (4 899 kg)	9,300 lb* (4 218 kg)*	8,150 lb (3 697 kg)	35 ft 2 in (10.72 m)	8,200 lb* (3 719 kg)*	8,000 lb (3 629 kg)
+5 ft (1.5 m)			17,650 lb* (8 006 kg)*	17,650 lb* (8 006 kg)*	39,500 lb* (17 917 kg)*	30,450 lb (13 812 kg)	28,050 lb* (12 723 kg)*	19,750 lb (8 958 kg)	21,700 lb (9 843 kg)	13,950 lb (6 328 kg)	16,250 lb (7 371 kg)	10,400 lb (4 717 kg)	9,250 lb* (4 196 kg)*	7,950 lb (3 606 kg)	35 ft 1 in (10.69 m)	8,700 lb* (3 946 kg)*	7,900 lb (3 583 kg)
Groundline			23,750 lb* (10 773 kg)*	23,750 lb* (10 773 kg)*	41,300 lb* (18 733 kg)*	28,950 lb (13 131 kg)	29,800 lb* (13 517 kg)*	18,800 lb (8 528 kg)	21,200 lb (9 616 kg)	13,400 lb (6 078 kg)	15,900 lb (7 212 kg)	10,050 lb (4 559 kg)			34 ft 2 in (10.41 m)	9,600 lb* (4 354 kg)*	8,150 lb (3 697 kg)
-5 ft (-1.5 m)	23,500 lb* (10 659 kg)*	23,500 lb* (10 659 kg)*	32,150 lb* (14 583 kg)*	32,150 lb* (14 583 kg)*	41,100 lb* (18 643 kg)*	28,650 lb (12 995 kg)	29,750 lb* (13 494 kg)*	18,350 lb (8 323 kg)	20,850 lb (9 457 kg)	13,100 lb (5 942 kg)	15,750 lb (7 144 kg)	9,950 lb (4 513 kg)			32 ft 6 in (9.91 m)	10,950 lb* (4 967 kg)*	8,800 lb (3 992 kg)
-10 ft (-3 m)	32,350 lb* (14 674 kg)*	32,350 lb* (14 674 kg)*	43,300 lb* (19 641 kg)*	43,300 lb* (19 641 kg)*	39,100 lb* (17 735 kg)*	28,900 lb (13 109 kg)	28,950 lb* (13 131 kg)*	18,450 lb (8 369 kg)	20,950 lb (9 503 kg)	13,250 lb (6 010 kg)					29 ft 10 in (9.09 m)	13,350 lb* (6 055 kg)*	10,150 lb (4 604 kg)
-15 ft (-4.5 m)	43,050 lb* (19 527 kg)*	43,050 lb* (19 527 kg)*	48,200 lb* (21 863 kg)*	48,200 lb* (21 863 kg)*	34,400 lb* (15 604 kg)*	29,600 lb (13 426 kg)	25,650 lb* (11 635 kg)*	19,000 lb (8 618 kg)	18,650 lb* (8 459 kg)*	13,800 lb (6 260 kg)					26 ft 1 in (7.95 m)	16,300 lb* (7 384 kg)*	12,650 lb (5 738 kg)
-20 ft (-6 m)			34,300 lb* (15 558 kg)*	34,300 lb* (15 558 kg)*	25,150 lb* (11 408 kg)*	25,150 lb* (11 408 kg)*	17,100 lb* (7 756 kg)*	17,100 lb* (7 756 kg)*							20 ft 7 in (6.27 m)	15,550 lb* (7 053 kg)*	15,550 lb* (7 053 kg)*

**13 ft 3 in (4.04 m)** Lift capacities using a 2,306 lb (1 046 kg) bucket, 14,106 lb (6 400 kg) counterweight

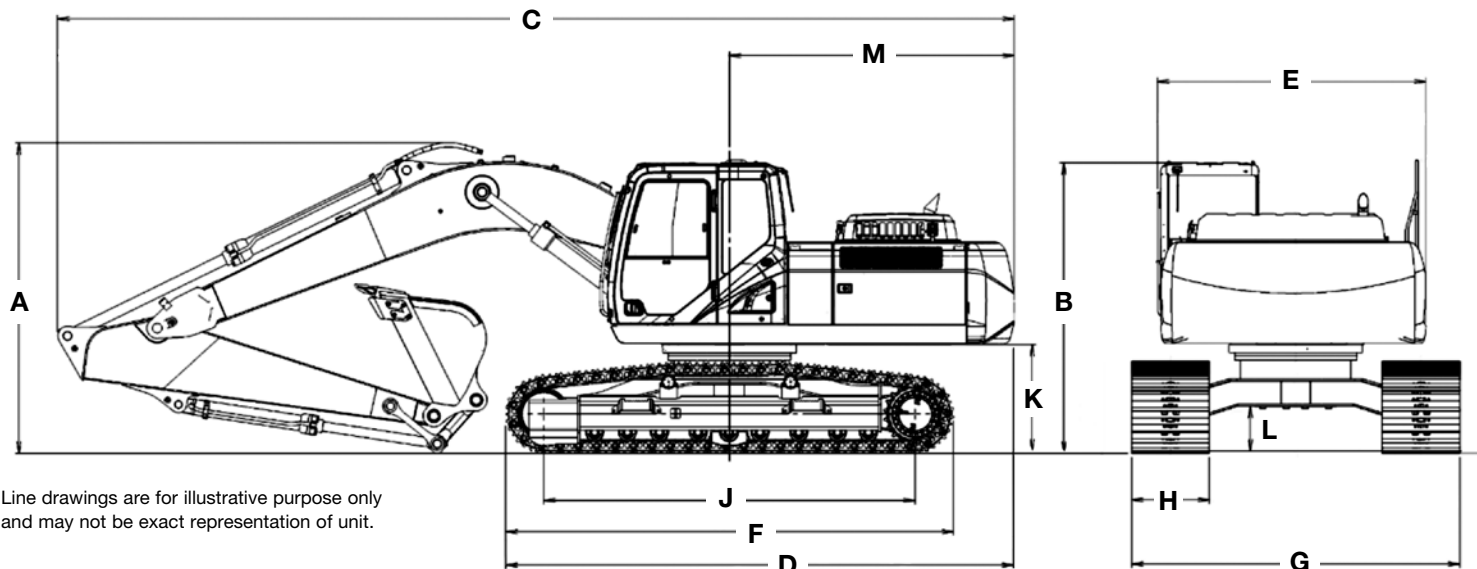
Load (Lift Point) Height	5 ft (1.5 m)		10 ft (3 m)		15 ft (4.5 m)		20 ft (6 m)		25 ft (7.5 m)		30 ft (9 m)		35 ft (10.5 m)		MAXIMUM REACH			
	END	SIDE	END	SIDE	END	SIDE	END	SIDE	END	SIDE	END	SIDE	END	SIDE	@	END	SIDE	
+30 ft (9 m)															29 ft 9 in (9.07 m)	6,700 lb* (3 039 kg)*	6,700 lb* (3 039 kg)*	
+25 ft (7.5 m)												11,300 lb* (5 126 kg)*	11,300 lb* (5 126 kg)*		33 ft 3 in (10.13 m)	6,250 lb* (2 835 kg)*	6,250 lb* (2 835 kg)*	
+20 ft (6 m)												13,100 lb* (5 942 kg)*	11,750 lb (5 330 kg)	7,800 lb* (3 538 kg)*	7,800 lb* (3 538 kg)*	35 ft 7 in (10.85 m)	6,100 lb* (2 767 kg)*	6,100 lb* (2 767 kg)*
+15 ft (4.5 m)										15,850 lb* (7 189 kg)*	15,550 lb (7 053 kg)	14,500 lb* (6 577 kg)*	11,350 lb (5 148 kg)	11,000 lb* (4 990 kg)*	8,400 lb (3 810 kg)	36 ft 11 in (11.25 m)	6,200 lb* (2 812 kg)*	6,200 lb* (2 812 kg)*
+10 ft (3 m)					29,650 lb* (13 449 kg)*	29,650 lb* (13 449 kg)*	22,450 lb* (10 183 kg)*	21,200 lb (9 616 kg)	18,500 lb* (8 391 kg)*	14,850 lb (6 736 kg)	15,900 lb* (7 212 kg)*	10,850 lb (4 921 kg)	12,750 lb (5 783 kg)	8,100 lb (3 674 kg)	37 ft 7 in (11.46 m)	6,400 lb* (2 903 kg)*	6,400 lb* (2 903 kg)*	
+5 ft (1.5 m)			29,650 lb* (13 449 kg)*	29,650 lb* (13 449 kg)*	36,550 lb* (16 579 kg)*	31,100 lb (14 107 kg)	26,150 lb* (11 861 kg)*	19,950 lb (9 049 kg)	20,700 lb* (9 389 kg)*	14,000 lb (6 350 kg)	16,200 lb (7 348 kg)	10,350 lb (4 695 kg)	12,500 lb (5 670 kg)	7,850 lb (3 561 kg)	37 ft 6 in (11.43 m)	6,800 lb* (3 084 kg)*	6,800 lb* (3 084 kg)*	
Groundline	11,800 lb* (5 352 kg)*	11,800 lb* (5 352 kg)*	25,500 lb* (11 567 kg)*	25,500 lb* (11 567 kg)*	40,250 lb* (18 257 kg)*	28,950 lb (13 131 kg)	28,650 lb* (12 995 kg)*	18,750 lb (8 505 kg)	21,000 lb (9 525 kg)	13,300 lb (6 033 kg)	15,750 lb (7 144 kg)	9,900 lb (4 491 kg)	12,250 lb (5 557 kg)	7,600 lb (3 447 kg)	36 ft 8 in (11.18 m)	7,450 lb* (3 379 kg)*	7,000 lb (3 175 kg)	
-5 ft (-1.5 m)	20,550 lb* (9 321 kg)*	20,550 lb* (9 321 kg)*	30,550 lb* (13 857 kg)*	30,550 lb* (13 857 kg)*	40,850 lb* (18 529 kg)*	28,000 lb (12 701 kg)	29,400 lb (13 336 kg)	18,000 lb (8 165 kg)	20,550 lb (9 321 kg)	12,800 lb (5 806 kg)	15,450 lb (7 008 kg)	9,650 lb (4 377 kg)	8,900 lb* (4 037 kg)*	7,550 lb (3 425 kg)	35 ft 1 in (10.69 m)	8,500 lb* (3 856 kg)*	7,500 lb (3 402 kg)	
-10 ft (-3 m)	27,950 lb* (12 678 kg)*	27,950 lb* (12 678 kg)*	38,700 lb* (17 554 kg)*	38,700 lb* (17 554 kg)*	39,950 lb* (18 121 kg)*	28,050 lb (12 723 kg)	29,100 lb* (13 200 kg)*	17,900 lb (8 119 kg)	20,450 lb (9 276 kg)	12,750 lb (5 783 kg)	15,500 lb (7 031 kg)	9,650 lb (4 377 kg)			32 ft 8 in (9.96 m)	10,150 lb* (4 604 kg)*	8,450 lb (3 833 kg)	
-15 ft (-4.5 m)	38,300 lb* (17 373 kg)*	38,300 lb* (17 373 kg)*	50,600 lb* (22 952 kg)*	50,600 lb* (22 952 kg)*	36,850 lb* (16 715 kg)*	28,550 lb (12 950 kg)	27,250 lb* (12 360 kg)*	18,200 lb (8 255 kg)	20,450 lb* (9 276 kg)	13,100 lb (5 942 kg)					29 ft 2 in (8.89 m)	13,200 lb* (5 987 kg)*	10,250 lb (4 649 kg)	
-20 ft (-6 m)			42,750 lb* (19 391 kg)*	42,750 lb* (19 391 kg)*	30,300 lb* (13 744 kg)*	28,800 lb (13 063 kg)	22,150 lb* (10 047 kg)*	18,750 lb (8 505 kg)							24 ft 4 in (7.42 m)	15,000 lb* (6 804 kg)*	13,850 lb (6 282 kg)	

NOTE: \*Lift capacities do not exceed 75% of the minimum tipping load or 87% of the hydraulic lift capacity. Capacities that are marked with an asterisk are hydraulic limited.

# CX350C LIFT CAPACITIES

8 ft 8 in (2.63 m) Lift capacities using a 2,731 lb (1 239 kg) bucket, 14,106 lb (6 400 kg) counterweight.

Load (Lift Point Height)	5 ft (1.5 m)		10 ft (3 m)		15 ft (4.5 m)		20 ft (6 m)		25 ft (7.5 m)		30 ft (9 m)		MAXIMUM REACH		
	END	SIDE	END	SIDE	END	SIDE	END	SIDE	END	SIDE	END	SIDE	@	END	SIDE
+30 ft (9 m)													24 ft 2 in (7.37 m)	12,300 lb* (5 579 kg)*	12,300 lb* (5 579 kg)*
+25 ft (7.5 m)									16,300 lb* (7 394 kg)*	15,700 lb (7 121 kg)			28 ft 6 in (8.69 m)	11,350 lb* (5 148 kg)*	11,350 lb* (5 148 kg)*
+20 ft (6 m)									17,500 lb* (7 938 kg)*	15,400 lb (6 985 kg)	15,650 lb* (7 099 kg)*	10,950 lb (4 967 kg)	31 ft 3 in (9.53 m)	11,000 lb* (4 990 kg)*	10,000 lb (4 536 kg)
+15 ft (4.5 m)					27,750 lb* (12 587 kg)*	27,750 lb* (12 587 kg)*	22,250 lb* (10 092 kg)*	21,250 lb (9 639 kg)	18,700 lb* (8 482 kg)*	14,750 lb (6 690 kg)	16,500 lb* (7 484 kg)*	10,700 lb (4 853 kg)	32 ft 10 in (10.01 m)	11,000 lb* (4 990 kg)*	8,900 lb (4 037 kg)
+10 ft (3 m)					33,400 lb* (15 150 kg)*	31,450 lb (14 265 kg)	25,850 lb* (11 725 kg)*	20,100 lb (9 117 kg)	20,650 lb* (9 367 kg)*	14,050 lb (6 373 kg)	16,150 lb (7 326 kg)	10,300 lb (4 672 kg)	33 ft 7 in (10.24 m)	11,300 lb* (5 126 kg)*	8,350 lb (3 787 kg)
+5 ft (1.5 m)					38,700 lb* (17 554 kg)*	29,100 lb (13 200 kg)	28,550 lb* (12 950 kg)*	18,900 lb (8 573 kg)	21,200 lb (9 616 kg)	13,400 lb (6 078 kg)	15,750 lb (7 144 kg)	9,950 lb (4 513 kg)	33 ft 5 in (10.19 m)	11,850 lb* (5 375 kg)*	8,250 lb (3 742 kg)
Groundline					40,700 lb* (18 461 kg)*	28,050 lb (12 723 kg)	29,500 lb* (13 381 kg)*	18,150 lb (8 233 kg)	20,650 lb (9 367 kg)	12,900 lb (5 851 kg)	15,500 lb (7 031 kg)	9,700 lb (4 400 kg)	32 ft 6 in (9.91 m)	12,950 lb* (5 874 kg)*	8,550 lb (3 878 kg)
-5 ft (-1.5 m)	21,300 lb* (9 662 kg)*	21,300 lb* (9 662 kg)*	32,150 lb* (14 583 kg)*	32,150 lb* (14 583 kg)*	39,950 lb* (18 121 kg)*	28,200 lb (12 791 kg)	29,200 lb* (13 245 kg)*	17,900 lb (8 119 kg)	20,500 lb (9 299 kg)	12,750 lb (5 783 kg)	15,550 lb (7 053 kg)	9,750 lb (4 423 kg)	30 ft 8 in (9.35 m)	14,750 lb* (6 690 kg)*	9,400 lb (4 264 kg)
-10 ft (-3 m)	35,600 lb* (16 148 kg)*	35,600 lb* (16 148 kg)*	46,750 lb* (21 205 kg)*	46,750 lb* (21 205 kg)*	36,900 lb* (16 738 kg)*	28,650 lb (12 995 kg)	27,600 lb* (12 519 kg)*	18,200 lb (8 255 kg)	20,550 lb (9 321 kg)	13,100 lb (5 942 kg)			27 ft 11 in (8.51 m)	16,500 lb* (7 484 kg)*	11,050 lb (5 012 kg)
-15 ft (-4.5 m)			41,600 lb* (18 869 kg)*	41,600 lb* (18 869 kg)*	30,800 lb* (13 971 kg)*	28,950 lb* (13 131 kg)*	22,850 lb* (10 365 kg)*	18,800 lb* (8 528 kg)*					23 ft 10 in (7.26 m)	15,650 lb* (7 099 kg)*	14,400 lb (6 532 kg)

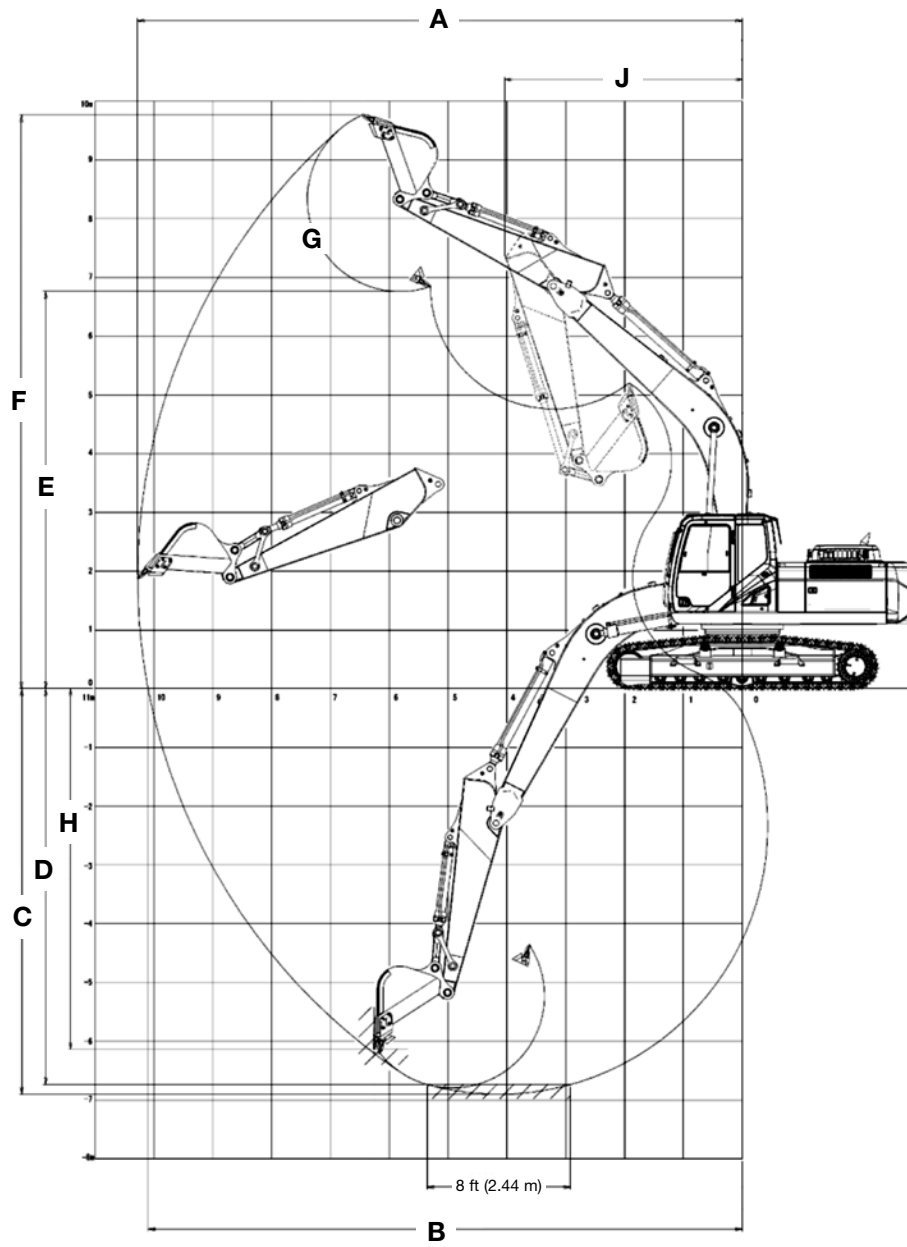


Line drawings are for illustrative purpose only and may not be exact representation of unit.

## DIMENSIONS

	13 ft 3 in (4.04 m) Arm	10 ft 8 in (3.25 m) Arm	8 ft 8 in (2.63 m) Arm
<b>A.</b> Overall height – with attachment	11 ft 11 in (3 620 mm)	11 ft 3 in (3 420 mm)	11 ft 11 in (3 640 mm)
<b>B.</b> Cab height	10 ft 5 in (3 170 mm)	10 ft 5 in (3 170 mm)	10 ft 5 in (3 170 mm)
<b>C.</b> Overall length – with attachment	36 ft 9 in (11 190 mm)	36 ft 7 in (11 140 mm)	36 ft 10 in (11 230 mm)
<b>D.</b> Overall length – without attachment	19 ft 9 in (6 010 mm)	19 ft 9 in (6 010 mm)	19 ft 9 in (6 010 mm)
<b>E.</b> Width of upper structure	9 ft 11 in (3 020 mm)	9 ft 11 in (3 020 mm)	9 ft 11 in (3 020 mm)
Width of upper structure with catwalks	11 ft 9 in (3 580 mm)	11 ft 9 in (3 580 mm)	11 ft 9 in (3 580 mm)
<b>F.</b> Track overall length	16 ft 4 in (4 980 mm)	16 ft 4 in (4 980 mm)	16 ft 4 in (4 980 mm)
<b>G.</b> Track overall width with 23.6 in (600 mm) shoes	11 ft 2 in (3 400 mm)	11 ft 2 in (3 400 mm)	11 ft 2 in (3 400 mm)
<b>H.</b> Track shoe width	2 ft 7 in (800 mm)	2 ft 7 in (800 mm)	2 ft 7 in (800 mm)
<b>J.</b> Center to center – idler to sprocket	13 ft 3 in (4 040 mm)	13 ft 3 in (4 040 mm)	13 ft 3 in (4 040 mm)
<b>K.</b> Upper structure ground clearance	4 ft 0 in (1 210 mm)	4 ft 0 in (1 210 mm)	4 ft 0 in (1 210 mm)
<b>L.</b> Minimum ground clearance	1 ft 7 in (480 mm)	1 ft 7 in (480 mm)	1 ft 7 in (480 mm)
<b>M.</b> Rear tail swing radius	11 ft 8 in (3 550 mm)	11 ft 8 in (3 550 mm)	11 ft 8 in (3 550 mm)
Operating weight*	79,999 lb (36 287 kg)	79,263 lb (35 953 kg)	79,124 lb (35 890 kg)
Ground pressure	7.4 psi (0.51 bar)	7.4 psi (0.51 bar)	7.4 psi (0.51 bar)

NOTE: \*With 31.5 in (800 mm) track shoe, 2,544 lb (1 154 kg) bucket, 165 lb (75 kg) operator, full fuel and standard equipment.



**PERFORMANCE SPECS**

	<b>13 ft 3 in (4.04 m) Arm</b>	<b>10 ft 8 in (3.25 m) Arm</b>	<b>8 ft 8 in (2.63 m) Arm</b>
<b>A.</b> Maximum dig radius	39 ft 1 in (11 900 mm)	36 ft 8 in (11 170 mm)	35 ft 0 in (10 670 mm)
<b>B.</b> Dig radius at groundline	38 ft 5 in (11 720 mm)	36 ft 0 in (10 980 mm)	34 ft 4 in (10 470 mm)
<b>C.</b> Maximum dig depth	26 ft 8 in (8 140 mm)	24 ft 1 in (7 340 mm)	22 ft 1 in (6 730 mm)
<b>D.</b> Dig depth—8 ft 0 in (2.44 m) level bottom	26 ft 3 in (8 010 mm)	23 ft 7 in (7 190 mm)	21 ft 6 in (6 550 mm)
<b>E.</b> Dump height	24 ft 9 in (7 540 mm)	23 ft 9 in (7 230 mm)	23 ft 5 in (7 140 mm)
<b>F.</b> Maximum reach height	35 ft 0 in (10 670 mm)	34 ft 0 in (10 370 mm)	33 ft 10 in (10 320 mm)
<b>G.</b> Bucket rotation	173°	173°	173°
<b>H.</b> Maximum vertical wall dig depth	23 ft 5 in (7 150 mm)	20 ft 10 in (6 350 mm)	19 ft 7 in (5 970 mm)
<b>J.</b> Minimum swing radius	15 ft 0 in (4 560 mm)	14 ft 9 in (4 500 mm)	15 ft 2 in (4 630 mm)
Arm digging force:			
Standard	31,586 lb (140.5 kN)	36,846 lb (163.9 kN)	43,838 lb (195.0 kN)
Power Boost	34,396 lb (153.0 kN)	40,016 lb (178.0 kN)	47,435 lb (211.0 kN)
Bucket digging force:			
Standard	51,436 lb (228.8 kN)	51,436 lb (228.8 kN)	51,436 lb (228.8 kN)
Power Boost	55,843 lb (248.4 kN)	55,843 lb (248.4 kN)	55,843 lb (248.4 kN)

NOTE: \*Machine equipped with 21 ft 2 in (6.45 m) boom.

## STANDARD EQUIPMENT

### ENGINE

Isuzu six-cylinder turbo-charged diesel  
Tier 4 Interim Certified (CEGR)  
Electronic fuel injection  
High pressure common rail system  
Diesel Particulate Defuser system (DPD)  
Neutral safety start  
Auto-engine warm up  
Glow-plug pre-heat  
FEA (Fuel Economy Assist System)  
EPF (Engine Protection Feature)  
Dual-stage fuel filtration  
Dual element air filter  
Remote oil filter  
Green plug oil drain  
500-hour engine oil change interval  
24-volt system

### FUEL ECONOMY SYSTEMS

Engine Idle / Fuel Economy System:  
Auto-idle  
One-touch idle  
Idle shut-down  
BEC—Boom Economy Control  
AEC—Auto Economy Control  
SWC—Swing Relief Control  
SSC—Spool Stroke Control

### HYDRAULICS

Auto power boost  
Auto swing priority  
Auto travel speed change  
Selectable work modes

### HYDRAULICS (CONTINUED)

ISO pattern controls  
Pre-set auxiliary pump settings  
Auxiliary valve  
5,000-hour hydraulic oil change interval  
1,000-hour hydraulic filter change interval  
Hydraulic track adjustment  
SAHR brake

### UPPER STRUCTURE

Right and left side mirrors  
Isolation mounted cab (fluid and spring)  
Common key vandal locks  
Upper mounted work light (70 watt)  
Swivel guard belly pan

### ATTACHMENTS

Boom—21 ft 2 in (6.45 m)  
Arm—10 ft 8 in (3.25 m)  
Heavy-duty bucket linkage  
Boom mounted work light (70 watt)  
Auxiliary pipe brackets  
Centralized grease fittings  
Attachment cushion valve  
Arm and boom regeneration

### OPERATOR STATION

ROPS protection  
FOPS cab top guard (Level 1)  
Pressurized cab  
One-touch lock front window  
AC/heat/defrost w/ auto climate control  
Color monitor—7 in (180 mm)  
Interior dome light

### OPERATOR STATION (CONTINUED)

Air-suspension seat (cloth)  
Seatbelt—3 in (76 mm)  
Adjustable armrests  
Tilting consoles—4-position  
Low-effort joystick controls  
Sliding cockpit—7 in (180 mm)  
Controls pre-wired for auxiliary  
Single pedal travel  
Straight travel  
AM/FM radio w/ antenna and 2 speakers  
Aux-in port for personal electronics  
Rear-view camera  
Anti-theft system (start code system)  
Rubber floor mat  
12-volt electric outlet  
24-volt cigarette lighter  
External rearview mirrors  
Windshield wiper/washer  
Clear (polycarbonate) roof window w/ sunshade  
Cup holder  
Storage compartments  
Warm/cool storage compartment  
On-board diagnostic system  
Travel alarm with cancel switch  
One key start & lock-up

### UNDERCARRIAGE

31.5 in (800 mm) steel shoes, triple semi-grouser  
Full overlap turntable bearing tub  
Single track chain guides  
Hydraulic track adjustment  
X-pattern carbody

### TELEMATICS

CASE SiteWatch™ Telematics – includes hardware and a 3-yr Advanced data subscription

## OPTIONAL EQUIPMENT

### HYDRAULICS

Auxiliary hydraulics:  
Single acting/joystick activated  
Double acting/joystick activated  
Multi-function w/ pressure control/  
joystick activated (five programmable  
pre-sets on monitor)  
Secondary low-flow/joystick activated

### ATTACHMENTS

Heavy-duty boom—21 ft 2 in (6.45 m)  
Heavy-duty arm—8 ft 8 in (2.63 m)  
Heavy-duty arm—10 ft 8 in (3.25 m)  
Arm—13 ft 3 in (4.04 m)  
Coupler/Case multi-pin grabber  
Buckets: Heavy-duty/Extreme-duty/Ditching  
Load holding control

### ATTACHMENTS (CONTINUED)

Free swing (order kit through Service Parts)  
Hose Burst Check Valve (HBCV)

### OPERATOR STATION

Control pattern selector  
FOPS cab top guard (Level 2)  
Front grill guard—2 x 2 in (50.8 x 50.8 mm)  
screen mesh  
Front rock guard—vertical bars  
(two piece)/OPG 1  
Front rock guard—vertical bars  
(one piece)/OPG 2  
Vandal guard  
Rain deflector  
Sun visor  
Side-view camera

### UPPER STRUCTURE

Refueling pump  
Rubber bumper guard  
(order through Service Parts)  
Catwalk—left and right side

### UNDERCARRIAGE

27.6 in (700 mm) steel shoes, triple semi-grouser  
33.5 in (850 mm) steel shoes, triple semi-grouser  
Track guides—triple

## BUCKETS

Application	Width	SAE Heaped Capacity
General purpose	30 in to 60 in (0.76 to 1.52 m)	1.26 yd <sup>3</sup> to 2.93 yd <sup>3</sup> (0.96 m <sup>3</sup> to 2.24 m <sup>3</sup> )
Heavy-duty	30 in to 54 in (0.76 to 1.37 m)	1.22 yd <sup>3</sup> to 2.53 yd <sup>3</sup> (0.93 m <sup>3</sup> to 1.93 m <sup>3</sup> )
Extreme-duty	30 in to 48 in (0.76 to 1.22 m)	1.12 yd <sup>3</sup> to 2.04 yd <sup>3</sup> (0.86 m <sup>3</sup> to 1.56 m <sup>3</sup> )
Ditching	72 in (1.83 m)	2.20 yd <sup>3</sup> (1.68 m <sup>3</sup> )

This page intentionally left blank.



NOTE: All specifications are stated in accordance with SAE Standards or Recommended Practices, where applicable.

NOTE: All engines meet current EPA emissions requirements.

IMPORTANT: Case Construction Equipment Inc. reserves the right to change these specifications without notice and without incurring any obligation relating to such change. Case Construction Equipment Inc. does not warrant the safety or reliability of attachments from other manufacturers. CASE is a trademark registered in the United States and many other countries, owned by or licensed to CNH Industrial N.V., its subsidiaries or affiliates. CNH Industrial Capital is a trademark in the United States and many other countries, owned by or licensed to CNH Industrial N.V., its subsidiaries or affiliates.



[www.casece.com](http://www.casece.com)

