

CX700

**EXCAVATOR
TIER III CERTIFIED**

ENGINE

Model	AH-6WG1X, Tier III certified
Type	4-stroke, turbocharged
Cylinders	6
Bore/Stroke	5.79 in x 6.07 in (147 x 154 mm)
Displacement	957 in ³ (15 700 cc)
Grade - ability	70% (35°)
Fuel injection	Direct-Electronic
Fuel	Diesel
Fuel filter	In-line strainer
Cooling	Liquid
Horsepower per SAE J1349	
Net	425 hp (317 kW) @ 1800 rpm
Maximum torque @ 1500 rpm	
Net	1460 lb-ft (1980 N·m)

BOOM/ARM

Boom (Reach)

Length	25 ft 3 in (7.70 m)
Boom w/arm cylinder & plumbing	14,546 lb (6600 kg)
Hoist cylinders (2)	1,544 lb (700 kg) each
Total weight	17,634 lb (8000 kg)

16 ft 5 in Arm (5.0 m)

Bare arm	6,196 lb (2810 kg)
Bucket cylinder linkage & plumbing	2,778 lb (1260 kg)
Total weight	8,974 lb (4070 kg)

13 ft 6 in Arm (4.11 m)

Bare arm	5,336 lb (2420 kg)
Bucket cylinder linkage & plumbing	2,778 lb (1260 kg)
Total weight	8,114 lb (3680 kg)

11 ft 8 in Arm (3.55 m)

Bare arm	4,785 lb (2170 kg)
Bucket cylinder linkage & plumbing	2,778 lb (1260 kg)
Total weight	7,563 lb (3430 kg)

UNDERCARRIAGE

Number of rollers	
Top, each track	3
Bottom, each track	8
Number of shoes	
Double grouser – each side	47
Link pitch	10.3 in (260.35 mm)

HYDRAULICS

Pumps (2)	Variable displacement axial piston design
Capacity –	
Maximum	2 x 116.2 gpm (440 L/min)
System relief pressure –	
Standard	4554 psi (31.4 MPa)
Power Boost	4974 psi (34.3 MPa)

Control valves –
4-spool section for right track travel, boom, bucket, arm
5-spool section for left track travel, boom, auxiliary, swing and arm
Boom and arm anti-drift valves

Pilot control hydraulic system –	
Pump (1)	Gear design
Maximum capacity	7.1 gpm (27 L/min)
Relief pressure	638 psi (4.4 MPa)

Swing –	
Motor (1)	Fixed displacement axial piston design
Speed	0-6.5 rpm
Brake	Spring-applied hydraulically released with dual cushion relief
Tail swing radius	13 ft 0 in (3.9 m)

Travel –	
Motor (2)	Two-speed axial piston design
Final drive	Planetary gear reduction
Drawbar pull	10,543 lb (469 kN)

Travel Speeds –	
Auto shift high to low	
	Forward/Reverse
Low	1.9 mph (3.0 km/h)
High	2.5 mph (4.1 km/h)

Travel control valve –	Dual stage relief and counter-balance design
------------------------	---

HYDRAULIC CYLINDERS

Boom cylinders (2) –	
Bore diameter	7.4 in (190 mm)
Rod diameter	5.1 in (130 mm)
Stroke	71.0 in (1805 mm)
Arm cylinder (1) –	
Bore diameter	7.8 in (200 mm)
Rod diameter	5.5 in (140 mm)
Stroke	79.7 in (2025 mm)
Bucket cylinder (1) –	
Bore diameter	7.0 in (180 mm)
Rod diameter	4.9 in (125 mm)
Stroke	57.6 in (1465 mm)

ELECTRICAL

Voltage	24 volts, negative ground
Alternator	50 amp
Batteries (2)	Low-maintenance 140 Ah (5 hr rate)

SERVICE CAPACITIES

Hydraulic tank	
Refill capacity	82 gal (310 L)
Total system	172 gal (650 L)
Final drive (per side)	8 gal (30 L)
Swing drive	7.1 (27 L)
Engine	
w/filter change	13.7 gal (52 L)
Fuel	238 gal (900 L)
Radiator	30 gal (112 L)

OPERATING WEIGHT

With 11 ft 8 in (3.55 m) arm, 25 ft 3 in (7.7 m) boom, 35.5 in (900 mm) track shoes, 6,614 lb (3000 kg) bucket, 175 lb (79 kg) operator, full fuel and standard equipment 153,300 lb (69 500 kg)

LIFT CAPACITIES – BOOM LENGTH 25 FT 3 IN (7.70 M)

16 ft 5 in (5.0 m) Arm Lift capacities calculated using a 5,210 lb (2363 kg) bucket, 22,908 lb (10 400 kg) counterweight operating in "Light" Mode.

Load (Lift Point) Height	10 ft (3.05 m)		15 ft (4.57 m)		20 ft (6.10 m)		25 ft (7.62 m)		30 ft (9.14 m)		35 ft (10.67 m)		40 ft (12.19 m)		MAXIMUM CAPACITY				
	END	SIDE	END	SIDE	END	SIDE	END	SIDE	END	SIDE	END	SIDE	END	SIDE	@	END	SIDE		
+35 ft (10.67 m)															38 ft 3 in	9,450 lb* (4286 kg)*	9,450 lb* (4286 kg)*		
+30 ft (9.14 m)															41 ft 7 in	8,950 lb* (4060 kg)*	8,950 lb* (4060 kg)*		
+25 ft (7.62 m)												16,500 lb* (7484 kg)*	16,500 lb* (7484 kg)*		43 ft 11 in	8,700 lb* (3946 kg)*	8,700 lb* (3946 kg)*		
+20 ft (6.10 m)												18,900 lb* (8573 kg)*	18,900 lb* (8573 kg)*	12,900 lb* (5851 kg)*	12,900 lb* (5851 kg)*	45 ft 5 in	8,700 lb* (3946 kg)*	8,700 lb* (3946 kg)*	
+15 ft (4.57 m)											24,850 lb* (11 272 kg)	24,850 lb* (11 272 kg)	21,850 lb* (9911 kg)*	19,150 lb* (8686 kg)	16,400 lb* (7439 kg)*	14,350 lb* (6509 kg)	46 ft 4 in	8,900 lb* (4037 kg)*	8,900 lb* (4037 kg)*
+10 ft (3.05 m)			35,650 lb* (16 171 kg)*	35,650 lb* (16 171 kg)*	40,950 lb* (18 575 kg)*	40,950 lb* (18 575 kg)*	32,750 lb* (14 855 kg)*	32,350 lb* (14 674 kg)	27,850 lb* (12 633 kg)*	24,400 lb* (11 068 kg)	24,550 lb* (11 136 kg)*	18,300 lb* (8301 kg)	18,900 lb* (8573 kg)*	13,900 lb* (6305 kg)	46 ft 7 in	9,300 lb* (4218 kg)*	9,300 lb* (4218 kg)*		
+5 ft (1.52 m)			67,100 lb* (30 436 kg)*	67,100 lb* (30 436 kg)*	48,700 lb* (22 090 kg)*	44,700 lb* (20 276 kg)	36,950 lb* (16 760 kg)*	31,200 lb* (14 152 kg)	30,400 lb* (13 789 kg)*	31,200 lb* (14 152 kg)	23,000 lb* (10 433 kg)	26,150 lb* (11 861 kg)*	17,450 lb* (7915 kg)	21,050 lb* (9548 kg)	13,400 lb* (6078 kg)	46 ft 2 in	9,900 lb* (4491 kg)*	9,900 lb* (4491 kg)*	
Ground-line	18,750 lb* (8505 kg)*	18,750 lb* (8505 kg)*	45,300 lb* (20 548 kg)*	45,300 lb* (20 548 kg)*	54,050 lb* (24 517 kg)*	41,750 lb* (18 937 kg)	40,600 lb* (18 416 kg)*	29,350 lb* (13 313 kg)	32,600 lb* (14 787 kg)*	21,800 lb* (9888 kg)	25,950 lb* (11 771 kg)*	16,650 lb* (7552 kg)	20,550 lb* (9321 kg)*	12,900 lb* (5851 kg)	45 ft 2 in	10,850 lb* (4921 kg)*	10,250 lb* (4649 kg)		
-5 ft (-1.52 m)	26,750 lb* (12 134 kg)*	26,750 lb* (12 134 kg)*	46,300 lb* (21 001 kg)*	46,300 lb* (21 001 kg)*	56,100 lb* (25 447 kg)*	39,950 lb* (18 121 kg)	42,650 lb* (19 346 kg)*	28,050 lb* (12 723 kg)	32,650 lb* (14 810 kg)	20,900 lb* (9480 kg)	25,300 lb* (11 476 kg)*	16,050 lb* (7280 kg)	20,200 lb* (9,163 kg)	12,600 lb* (5715 kg)	43 ft 5 in	12,150 lb* (5511 kg)*	11,000 lb* (4990 kg)		
-10 ft (-3.05 m)	34,850 lb* (15 808 kg)*	34,850 lb* (15 717 kg)*	54,900 lb* (24 902 kg)*	54,900 lb* (24 902 kg)*	65,550 lb* (29 744 kg)*	39,250 lb* (17 804 kg)	42,750 lb* (19 391 kg)*	27,400 lb* (12 428 kg)	32,100 lb* (14 560 kg)*	20,400 lb* (9253 kg)	25,000 lb* (11 340 kg)	15,750 lb* (7144 kg)	16,500 lb* (7484 kg)*	12,500 lb* (6670 kg)	40 ft 11 in	14,150 lb* (6418 kg)*	12,400 lb* (5,625 kg)		
-15 ft (4.57 m)	44,200 lb* (20 049 kg)*	44,200 lb* (20 049 kg)*	66,500 lb* (30 164 kg)*	63,950 lb* (29 007 kg)*	83,050 lb* (37 463 kg)*	39,350 lb* (17 849 kg)	41,150 lb* (18 665 kg)*	27,250 lb* (12 360 kg)	32,000 lb* (14 515 kg)	20,250 lb* (9185 kg)	25,000 lb* (11 340 kg)	15,750 lb* (7144 kg)			37 ft 4 in	17,200 lb* (7802 kg)*	14,800 lb* (6713 kg)		
-20 ft (6.10 m)	62,300 lb* (28 259 kg)*	62,300 lb* (28 259 kg)*	82,200 lb* (37 322 kg)*	82,200 lb* (37 322 kg)*	96,200 lb* (43 638 kg)*	39,950 lb* (18 121 kg)	47,650 lb* (21 614 kg)*	27,650 lb* (12 542 kg)	36,950 lb* (16 760 kg)*	20,650 lb* (9367 kg)					32 ft 5 in	17,200 lb* (7802 kg)*	17,200 lb* (7802 kg)*		
-25 ft (7.62 m)	68,350 lb* (31 003 kg)*	68,350 lb* (31 003 kg)*	89,800 lb* (40 738 kg)*	89,800 lb* (40 738 kg)*	102,650 lb* (46 600 kg)*	37,850 lb* (17 168 kg)*	47,850 lb* (21 719 kg)*	28,350 lb* (12 859 kg)*	37,850 lb* (17 168 kg)*	20,650 lb* (9367 kg)									

13 ft 6 in (4.1 m) Arm Lift capacities calculated using a 5,721 lb (2595 kg) bucket, 22,908 lb (10 400 kg) counterweight operating in "Light" Mode.

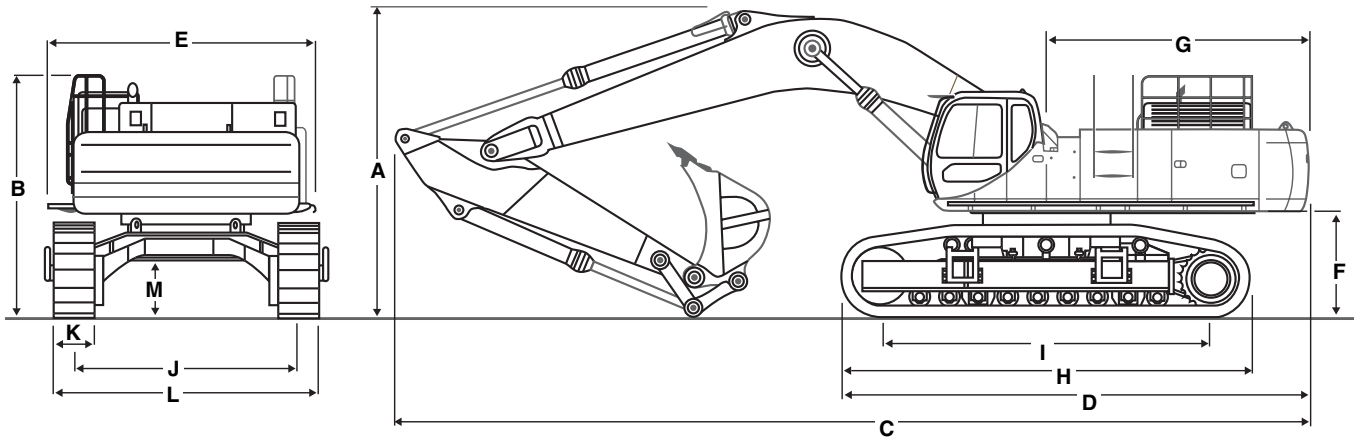
Load (Lift Point) Height	10 ft (3.05 m)		15 ft (4.57 m)		20 ft (6.10 m)		25 ft (7.62 m)		30 ft (9.14 m)		35 ft (10.67 m)		40 ft (12.19 m)		MAXIMUM CAPACITY		
	END	SIDE	END	SIDE	END	SIDE	END	SIDE	END	SIDE	END	SIDE	END	SIDE	@	END	SIDE
+35 ft (10.67 m)															34 ft 5 in	12,200 lb* (5534 kg)*	12,200 lb* (5534 kg)*
+30 ft (9.14 m)															38 ft 1 in	11,550 lb* (5239 kg)*	11,550 lb* (5239 kg)*
+25 ft (7.62 m)															40 ft 8 in	11,350 lb* (5148 kg)*	11,350 lb* (5148 kg)*
+20 ft (6.10 m)											25,400 lb* (11 521 kg)*	25,400 lb* (11 521 kg)*	21,000 lb* (9525 kg)*	19,050 lb* (8641 kg)	42 ft 4 in	11,400 lb* (5171 kg)*	11,400 lb* (5171 kg)*
+15 ft (4.57 m)									31,700 lb* (14 379 kg)*	31,700 lb* (14 379 kg)*	27,550 lb* (12 496 kg)*	24,900 lb* (11 294 kg)	24,850 lb* (11 272 kg)*	18,500 lb* (8391 kg)	43 ft 3 in	11,700 lb* (5307 kg)*	11,700 lb* (5307 kg)*
+10 ft (3.05 m)			62,800 lb* (28 486 kg)*	62,800 lb* (28 486 kg)*	45,700 lb* (20 729 kg)*	45,700 lb* (20 729 kg)*	35,700 lb* (16 193 kg)*	32,250 lb* (14 628 kg)	29,950 lb* (13 585 kg)*	23,650 lb* (10 727 kg)	26,200 lb* (11 884 kg)*	17,800 lb* (8074 kg)			43 ft 6 in	12,300 lb* (5579 kg)*	11,450 lb* (5194 kg)
+5 ft (1.52 m)			47,350 lb* (21 478 kg)*	47,350 lb* (21 478 kg)*	52,700 lb* (23 904 kg)*	43,050 lb* (19 527 kg)	39, 450 lb* (17 894 kg)*	30,250 lb* (13 721 kg)	32,100 lb* (14 560 kg)*	22,400 lb* (10 160 kg)	26,350 lb* (11 952 kg)	17,050 lb* (7734 kg)	17,700 lb* (8029 kg)*	13,100 lb* (5942 kg)*	43 ft 1 in	13,250 lb* (6010 kg)*	11,400 lb* (5171 kg)*
Ground-line	19,600 lb* (8890 kg)*	19,600 lb* (8890 kg)*	42,650 lb* (19 346 kg)*	42,650 lb* (19 346 kg)*	56,000 lb* (25 401 kg)*	40,750 lb* (18 484 kg)	42,200 lb* (19 142 kg)*	28,750 lb* (13 041 kg)	33,200 lb* (15 059 kg)	21,400 lb* (9707 kg)	25,700 lb* (11 657 kg)*	16,400 lb* (7439 kg)			42 ft 0 in	14,550 lb* (6600 kg)*	11,800 lb* (5352 kg)
-5 ft (-1.52 m)	31,250 lb* (14 175 kg)*	31,250 lb* (14 175 kg)*	49,700 lb* (22 544 kg)*	49,700 lb* (22 544 kg)*	56,150 lb* (25 469 kg)*	39,600 lb* (17 962 kg)	43,100 lb* (19 550 kg)	27,800 lb* (12 610 kg)	32,450 lb* (14 719 kg)	20,700 lb* (9389 kg)	25,250 lb* (11 453 kg)	16,000 lb* (7257 kg)			40 ft 1 in	16,500 lb* (7484 kg)*	12,800 lb* (5806 kg)
-10 ft (-3.05 m)	39,100 lb* (17 735 kg)*	39,100 lb* (17 735 kg)*	59,750 lb* (27 102 kg)*	59,750 lb* (27 102 kg)*	64,550 lb* (29 296 kg)	39,450 lb* (17 894 kg)	42,300 lb* (19 187 kg)	27,450 lb* (12 451 kg)	32,150 lb* (14 583 kg)	20,450 lb* (9276 kg)	25,100 lb* (11 385 kg)	15,850 lb* (7189 kg)			37 ft 4 in	19,450 lb* (8822 kg)*	14,700 lb* (6668 kg)
-15 ft (4.57 m)	51,650 lb* (23 428 kg)*	51,650 lb* (23 428 kg)*	66,650 lb* (30 232 kg)*	66,650 lb* (30 232 kg)*	70,450 lb* (31 958 kg)	39,900 lb* (18 098 kg)	40,450 lb* (18 348 kg)	27,600 lb* (12 519 kg)	30,850 lb* (13 993 kg)*	20,600 lb* (9344 kg)					33 ft 4 in	20,350 lb* (9231 kg)*	18,250 lb* (8278 kg)
-20 ft (6.10 m)	71,650 lb* (32 500 kg)*	71,650 lb* (32 500 kg)*	82,200 lb* (37 322 kg)*	82,200 lb* (37 322 kg)*	82,200 lb* (37 322 kg)*	42,800 lb* (19 414 kg)*	40,650 lb* (18 439 kg)	32,950 lb* (14 946 kg)*	28,350 lb* (12 859 kg)								
-25 ft (7.62 m)			38,200 lb* (17 327 kg)*	38,200 lb* (17 327 kg)*	38,200 lb* (17 327 kg)*	28,900 lb* (13 109 kg)*	28,900 lb* (13 109 kg)*										

*Lift capacities do not exceed 75% of the minimum tipping load or 87% of the hydraulic lift capacity. Capacities that are marked with an asterisk are hydraulic limited.

11 ft 8 in (3.55 m) Arm Lift capacities calculated using a 6,345 lb (2878 kg) bucket, 22,908 lb (10 400 kg) counterweight operating in "Light" Mode.

Load (Lift Point) Height	10 ft (3.05 m)		15 ft (4.57 m)		20 ft (6.10 m)		25 ft (7.62 m)		30 ft (9.14 m)		35 ft (10.67 m)		MAXIMUM CAPACITY		
	END	SIDE	END	SIDE	END	SIDE	END	SIDE	END	SIDE	END	SIDE	@	END	SIDE
+35 ft (10.66 m)													32 ft 3 in	14,450 lb* (6554 kg)*	14,450 lb* (6554 kg)*
+30 ft (9.14 m)													36 ft 2 in	13,600 lb* (6169 kg)*	13,600 lb* (6169 kg)*
+25 ft (7.62 m)									25,250 lb* (11 453 kg)*	25,250 lb* (11 453 kg)*			38 ft 11 in	13,300 lb* (6033 kg)*	13,300 lb* (6033 kg)*
+20 ft (6.10 m)									26,750 lb* (12 134 kg)*	25,200 lb (11 431 kg)	20 650 lb* (9367 kg)*	18,400 lb (8346 kg)	40 ft 8 in	13,350 lb* (6055 kg)*	13,350 lb* (6055 kg)*
+15 ft (4.57 m)			37,250 lb* (16 896 kg)*	37,250 lb* (16 896 kg)*	41,150 lb* (18 665 kg)*	41,150 lb* (18 665 kg)*	33,400 lb* (15 150 kg)*	32,950 lb (14 946 kg)	28,750 lb* (13 041 kg)*	24,200 lb (10 977 kg)	25,550 lb* (11 589 kg)*	17,950 lb (8142 kg)	41 ft 8 in	13,700 lb* (6214 kg)*	12,550 lb (5693 kg)
+10 ft (3.05 m)			64,000 lb* (29 030 kg)*	64,000 lb* (29 030 kg)*	48,650 lb* (22 067 kg)*	45,050 lb (20 434 kg)	37,150 lb* (16 851 kg)*	31,400 lb (14 243 kg)	30,950 lb* (14 039 kg)*	23,000 lb (10 433 kg)	26,550 lb* (12 043 kg)*	17,300 lb (7847 kg)	41 ft 11 in	14,350 lb* (6509 kg)*	12,050 lb (5466 kg)
+5 ft (1.52 m)			38,300 lb* (17 373 kg)*	38,300 lb* (17 373 kg)*	54,550 lb* (24 743 kg)*	42,000 lb (19 051 kg)	40 600 lb* (18 416 kg)*	29,550 lb (13 404 kg)	32,800 lb* (14 878 kg)*	21,900 lb (9934 kg)	25,950 lb (11 771 kg)	16,650 lb (7552 kg)	41 ft 6 in	15,400 lb* (6985 kg)*	12,050 lb (5466 kg)
Ground- line			39,150 lb* (17 758 kg)*	39,150 lb* (17 758 kg)*	56,350 lb* (25 560 kg)*	40,100 lb (18 189 kg)	42,700 lb* (19 368 kg)*	28,250 lb (12 814 kg)	32,800 lb (14 878 kg)	21,000 lb (9525 kg)	25,350 lb (11 499 kg)	16,100 lb (7303 kg)	40 ft 4 in	16,900 lb* (7666 kg)*	12,550 lb (5693 kg)
-5 ft (-1.52 m)	32,950 lb* (14 946 kg)*	32,950 lb* (14 946 kg)*	50,200 lb* (22 770 kg)*	50,200 lb* (22 770 kg)*	55,700 lb* (25 265 kg)*	39,450 lb (17 894 kg)	42,900 lb* (19 459 kg)*	27,500 lb (12 474 kg)	32,200 lb (14 606 kg)	20,500 lb (9299 kg)	25,050 lb (11 362 kg)	15,800 lb (7167 kg)	38 ft 4 in	19,150 lb* (8686 kg)*	13,750 lb (6237 kg)
-10 ft (-3.05 m)	42,300 lb* (19 187 kg)*	42,300 lb* (19 187 kg)*	63,500 lb* (28 803 kg)*	62,950 lb (28 554 kg)	53,250 lb* (24 154 kg)*	39,600 lb (17 962 kg)	41,400 lb* (18 779 kg)*	27,350 lb (12 406 kg)	32,050 lb (14 538 kg)	20,350 lb (9231 kg)			35 ft 4 in	21,900 lb* (9934 kg)*	16,100 lb (7303 kg)
-15 ft (4.57 m)	57,300 lb* (25 991 kg)*	57,300 lb* (25 991 kg)*	82,500 lb* (38 350 kg)*	82,500 lb* (38 350 kg)*	47,950 lb* (21 750 kg)*	40,200 lb (18 234 kg)	37,400 lb* (16 964 kg)*	27,700 lb (12 565 kg)	28,700 lb* (13 018 kg)*	20,700 lb (9389 kg)			31 ft 1 in	18,300 lb* (8301 kg)*	18,300 lb (8301 kg)
-20 ft (6.10 m)	64,700 lb (29 347 kg)	64,700 lb (29 347 kg)	49,650 lb* (22 521 kg)*	49,650 lb* (22 521 kg)*	38,600 lb* (17 509 kg)*	38,600 lb* (17 509 kg)*	28,950 lb* (13 131 kg)*	28,550 lb (12 950 kg)							

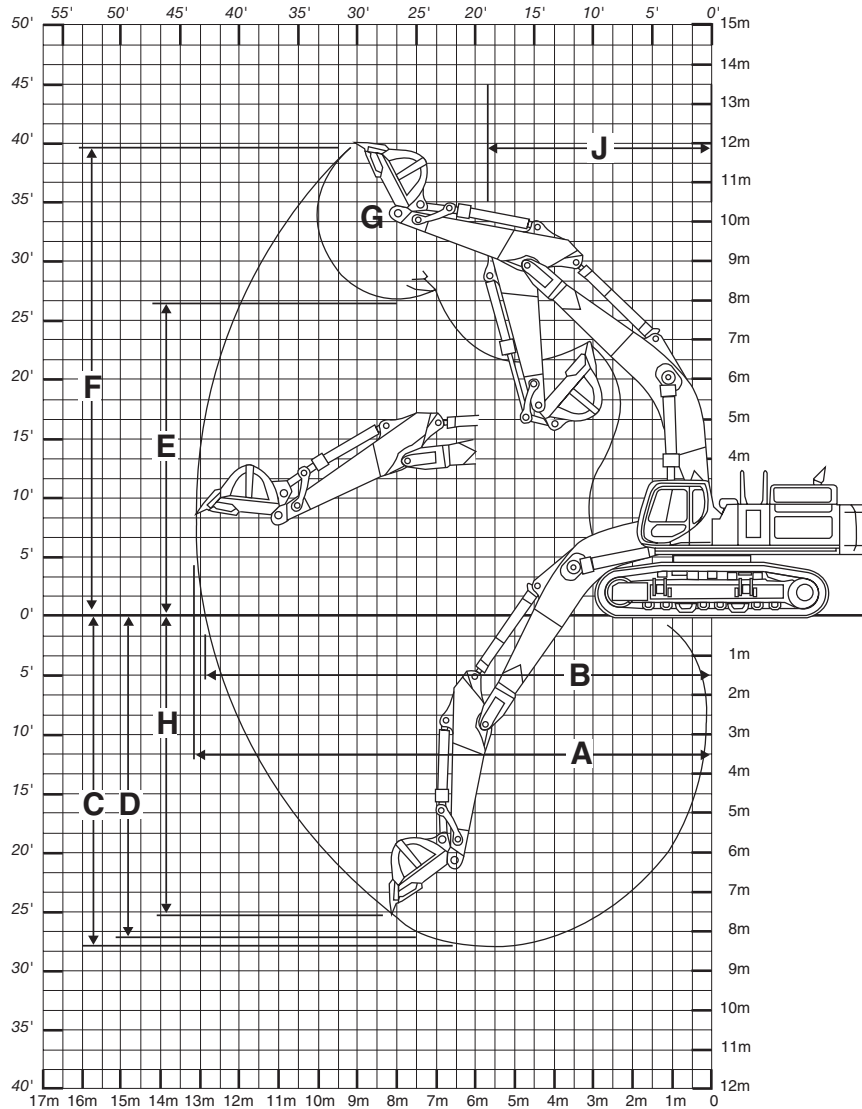
GENERAL DIMENSIONS



DIMENSIONS — BOOM LENGTH 25 FT 3 IN (7.70 M)

	16 ft 5 in (5.00 m) Arm	13 ft 6 in (4.11 m) Arm	11 ft 8 in (3.55 m) Arm
A. Overall height	16 ft 11 in (5.16 m)	14 ft 8 in (4.47 m)	14 ft 1 in (4.30 m)
B. Top of exhaust stack	12 ft 5 in (3.79 m)	12 ft 5 in (3.79 m)	12 ft 5 in (3.79 m)
C. Overall length	43 ft 3 in (13.17 m)	43 ft 7 in (13.30 m)	43 ft 7 in (13.30 m)
D. w/o attachment	22 ft 8 in (6.91 m)	22 ft 8 in (6.91 m)	22 ft 8 in (6.91 m)
E. Width of upperstructure w/catwalks	13 ft 0 in (3.98 m)	13 ft 0 in (3.98 m)	13 ft 0 in (3.98 m)
F. Upperstructure ground clearance	4 ft 11 in (1.51 m)	4 ft 11 in (1.51 m)	4 ft 11 in (1.51 m)
G. Tail swing radius	13 ft 2 in (4.00 m)	13 ft 2 in (4.00 m)	13 ft 2 in (4.00 m)
H. Track overall length	19 ft 3 in (5.88 m)	19 ft 3 in (5.88 m)	19 ft 3 in (5.88 m)
I. Center to center (idler to sprocket)	15 ft 5 in (4.70 m)	15 ft 5 in (4.70 m)	15 ft 5 in (4.70 m)
J. Track gauge — extended	10 ft 7 in (3.25 m)	10 ft 7 in (3.25 m)	10 ft 7 in (3.25 m)
K. Track shoe width	35.5 in (900 mm)	35.5 in (900 mm)	35.5 in (900 mm)
L. Track overall width w/35.5 in (900 mm) shoes	13 ft 7 in (4.15 m)	13 ft 7 in (4.15 m)	13 ft 7 in (4.15 m)
L. Track overall width w/35.5 in (900 mm) side frames retracted	11 ft 10 in (3.64 m)	11 ft 10 in (3.64 m)	11 ft 10 in (3.64 m)
M. Minimum ground clearance	2 ft 8 in (0.83 m)	2 ft 8 in (0.83 m)	2 ft 8 in (0.83 m)
Working weight*	154,659 lb (70 140 kg)	153,799 lb (69 750 kg)	153,300 lb (69 500 kg)
Ground pressure	10.7 psi (73 bar)	10.7 psi (73 bar)	10.7 psi (73 bar)

*With 35.5 in (900 mm) track shoe, 6,614 lb (3000 kg) bucket, 165 lb (75 kg) operator, full fuel and standard equipment.



PERFORMANCE SPECS – BOOM LENGTH 25 FT 3 IN (7.70 M)

	16 ft 5 in (5.00 m) Arm	13 ft 6 in (4.11 m) Arm	11 ft 8 in (3.55 m) Arm
A. Maximum dig radius	47 ft 11 in (14.60 m)	44 ft 9 in (13.65 m)	43 ft 2 in (13.16 m)
B. Dig radius at groundline	46 ft 11 in (14.30 m)	43 ft 11 in (13.40 m)	42 ft 4 in (12.90 m)
C. Maximum dig depth	32 ft 4 in (9.85 m)	29 ft 5 in (8.97 m)	27 ft 6 in (8.40 m)
D. Dig depth – 8 ft 0 in (2.44 m) level bottom	31 ft 11 in (9.75 m)	29 ft 0 in (8.85 m)	27 ft 2 in (8.27 m)
E. Dump height	28 ft 7 in (8.71 m)	26 ft 9 in (8.16 m)	26 ft 4 in (8.02 m)
F. Overall reach height	41 ft 8 in (12.70 m)	39 ft 6 in (12.04 m)	39 ft 1 in (11.92 m)
G. Bucket rotation	175°	175°	175°
H. Vertical straight wall dig depth	28 ft 4 in (8.63 m)	24 ft 2 in (7.36 m)	22 ft 6 in (6.87 m)
J. Minimum swing radius	18 ft 8 in (5.70 m)	18 ft 8 in (5.68 m)	19 ft 1 in (5.81 m)
Arm digging force			
Standard	39,360 lb (175 kN)	45,411 lb (202 kN)	50,357 lb (224 kN)
Power Boost	43,050 lb (192 kN)	49,683 lb (221 kN)	55,078 lb (245 kN)
Bucket digging force			
Standard	65,200 lb (290 kN)	65,194 lb (290 kN)	65,194 lb (290 kN)
Power Boost	71,260 lb (317 kN)	71,264 lb (317 kN)	71,264 lb (317 kN)

STANDARD EQUIPMENT

OPERATOR'S COMPARTMENT

Cab with Isomount® system
Adjustable deluxe seat with
3 in (76 mm) retractable seat belt
Front window safety glass
Climate Control System
AM/FM Radio w/auto tuner
Roof hatch, skylight
Windshield wiper w/washer
Anti-theft device

ENGINE

AH-6WG1X turbocharged diesel
Tier III certified
Warm up mode
Selectable one touch or auto
accelerator/decelerator
Auto engine derate

ELECTRICAL

Electronic Systems Monitor
Horn, dual

HYDRAULICS

ISO pattern pilot controls
4 Position mode selector: H, S, F & Auto
Auto Power Boost
2 Variable flow piston pumps
Auxiliary attachment mode
Auto pump destroke
Auxiliary hydraulic valve
Boom and arm anti-drift valves
Selectable cushion control for boom and arm
Controlled free swing
Ultra Clean filtration system
Boom priority
Hydraulic reversing cooling fan

UNDERCARRIAGE

Shoes: 35.5 in (900 mm) 2-bar, 47 per side
Track length: 19 ft 3 in (5.88 m)
Track gauge: 10 ft 7 in (3.25 m)
Sealed and lubed track

TRACK DRIVE

2-speed hydrostatic travel
Straight tracking travel priority
Disc-type parking brakes

UPPERSTRUCTURE

Boom: 25 ft 3 in (7.70 m) one piece
Hammer adaptable
Swing brake

OTHER

Counterweight: 22,908 lb (10 400 kg)
Single key lockup

OPTIONAL EQUIPMENT

UPPERSTRUCTURE

Arm: 16 ft 5 in or 13 ft 9 in (5.00 m or 4.20 m)

HYDRAULICS

Auxiliary hydraulics
Single acting, one pump
Double acting, single or dual pump
(includes heavy-duty bucket linkage)
Double acting general purpose for use with
thumb kit
Control pattern selector valve

OTHER

Load holding control devices, cylinder mounted
Case/JRB Slide-Loc® Hydraulic Coupler
Counterweight removal device
Vandal guard
Front screen – 2 inch by 2 inch mesh
Front guard – vertical bars 6 inch spacing
FOPS – top cab guard – level 2

BUCKETS

Application	Width	SAE Heaped Capacity
Heavy-duty	42 in thru 84 in (1.06 m thru 2.13 m)	2.53 yd ³ thru 5.91 yd ³ (1.93 m ³ thru 4.52 m ³)
Extreme-duty	45 in thru 84 in (1.14 m thru 2.13 m)	2.47 yd ³ thru 5.30 yd ³ (1.89 m ³ thru 4.05 m ³)

NOTE: All specifications are stated in accordance with SAE Standards or Recommended Practices, where applicable.

NOTE: All engines meet current EPA emissions requirements.

IMPORTANT: CNH America LLC reserves the right to change these specifications without notice and without incurring any obligation relating to such change. CNH America LLC does not warrant the safety or reliability of attachments from other manufacturers.

Case is a registered trademark of CNH America LLC. Any trademarks referred to herein, in association with goods and/or services of companies other than CNH America LLC, are the property of those respective companies.



www.casece.com

 CASE IS A BRAND OF CNH,
A GLOBAL LEADER IN CONSTRUCTION EQUIPMENT, AGRICULTURAL EQUIPMENT AND FINANCIAL SERVICES.

Form No. CCE5180502
Same information as form no. None

Printed in U.S.A.

© 2005 CNH America LLC
All Rights Reserved