

Forklift



63 net horsepower (47 kW)

Choice of 2-wheel or 4-wheel drive with Site-View mast
4000, 5000, 6000 lb (1814, 2268, 2722 kg) lift capacities

584E/585E/586E



584E/585E/586E

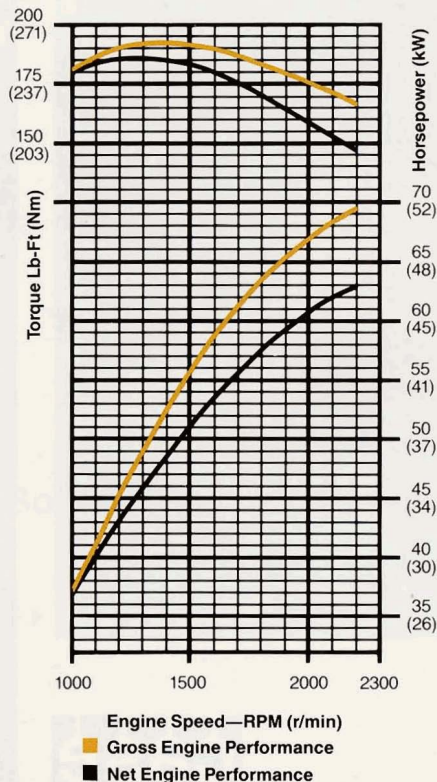
584E/585E/586E Series Basic Tractor

Engine

Make and model **Case 4-390**
 Type of fuel No. 2 diesel
 No. of cylinders 4
 Bore and stroke 4.02" x 4.72"
 (102 mm x 120 mm)
 Displacement 239 in³ (3.9 L)
 Compression ratio 17:1
 Fuel induction Injectors
 Fuel supply Injection pump
 Air cleaner Dry type —
 replacement element
 Oil filter Replaceable spin-on
 cartridge, full flow
 Lubrication Positive pressure
 Cooling system Pressurized —
 15 psi (103 kPa)
Horsepower
 Gross (1) 69 @ 2200 rpm
 (51 kW @ 2200 r/min)
 SAE Net (2) 63 @ 2200 rpm
 (47 kW @ 2200 r/min)
Max torque ft-lb
 Gross (1) 186 @ 1300 rpm
 (252 Nm @ 1300 r/min)
 SAE Net (2) 181 @ 1200 rpm
 (245 Nm @ 1200 r/min)

(1) Gross engine horsepower or torque at flywheel per SAE 816 specification.
 (2) Net engine horsepower or torque at flywheel per SAE 816 specification.

Power Curve



Electrical

System voltage 12 volts,
 negative ground
 Battery Maintenance free, 685 cold
 cranking amps at 32°F (0°C)
 Alternator 65 amp

Power Train

Transmission: Full power shuttle and torque converter, 4 speed; sliding spur gear in 1st and 2nd. Synchronesh in 3rd and 4th permits on the go shifting up from 2nd to 3rd to 4th and back down from 4th to 3rd.
 Torque converter: Single stage hydrokinetic type (2.78 to 1 ratio).
 Reversing unit: Power hydraulic clutches.
 Brakes: Individual foot operated, hydraulic actuated. 8" (203 mm) self-adjusting dry disc, with 246 in² (1587 cm²) braking surface. Over-center hand-operated caliper disc parking brake.
 Final drives:

Front multiple gear reduction,
 differential lock
 Rear (4-WD) outboard planetary
 4-wheel drive: operator engaged rear wheel mechanical drive by lever located next to operator's seat.

Axle Ratings (Manufacturer's)

Front 13,500 lb (6123 kg)
 Rear (2-WD) 11,500 lb (5216 kg)
 (4-WD) 12,500 lb (5670 kg)

Axle Oscillation

Front Fixed
 Rear (2-WD) 22°
 (4-WD) 23°

Steering

Power steering Hydrostatic,
 load sensing
 Hydraulic pump Front-mounted,
 positive displacement, gear type.
 Pump capacity
 23 gpm @ 2200 rpm @ 2000 psi
 (87.1 L/min @ 2200 r/min @ 13 790 kPa)
 Steering system: Utilizes same hydraulic pump as the hydraulic system. Steering system is a load sensing, supply and demand system that requires a maximum of 3.0 gpm (11.4 L/min) when turning wheels from stop to stop. Excess oil not being utilized by steering system is then made available to equipment hydraulic system.
 Main relief setting
 2150 ± 50 psi @ 2100 rpm
 (14 824 ± 345 kPa @ 2100 r/min)

Turning ratio (stop to stop)
 (2-WD) 3.5 turns
 (4-WD) 3.75 turns
 Steering cylinders, double acting (2)
 1.5" dia x 6.5" stroke
 (38 mm dia x 165 mm stroke)

Service Capacities

	U.S.	Liters
Cooling system	18 qt	17
Fuel tank	26.5 gal	100.3
Engine oil w/filter	11.6 qt	11
Power shuttle	8 qt	7.6
Transaxle	20 qt	18.9
Planetaries—each (4-WD)	1.5 qt	1.4
Differential (4-WD)	7 qt	6.6
Transfer case (4-WD)	1 pt	.5
Hydraulic reservoir		
w/filter	15.3 gal	57.9
w/o filter	13.3 gal	50.3

Travel Speeds — mph (km/h)

Engine at full throttle, 14.9 x 24, R4 tires.

	1st	2nd	3rd	4th
Forward	3.7 (5.9)	6.8 (10.9)	12.8 (20.6)	22.9 (36.8)
Reverse	3.2 (5.2)	6.3 (10.1)	11.6 (18.7)	20.5 (33.0)

Turning Clearance Circle

2-Wheel Drive models
 Model 584E with 14.25' (4.3 m) or 21.5' (6.6 m) masts and Model 585E with 12' (3.7 m), 14.25' (4.3 m) or 28' (8.5 m) masts
 —with brakes 21'11" (6.68 m)
 —without brakes 24'6" (7.46 m)
 Model 585E with 21.5' (6.6 m) mast and Model 586E with 12' (3.7 m), 14.25' (4.3 m), 21.5' (6.6 m) and 21.5' (6.6 m) Freelift masts
 —with brakes 23'10" (7.26 m)
 —without brakes 25'9" (7.85 m)
 Model 586E with 14.25' (4.3 m) and 21.5' (6.6 m) Freelift masts
 —with brakes 22'10" (6.96 m)
 —without brakes 25'6" (7.77 m)

4-Wheel Drive Models

Two wheel drive mode
 —with brakes 26'5" (8.05 m)
 —without brakes 30'3" (9.22 m)
 Four wheel drive mode
 —with brakes 23'5" (7.14 m)
 —without brakes 33' (10.06 m)

Hydraulic System

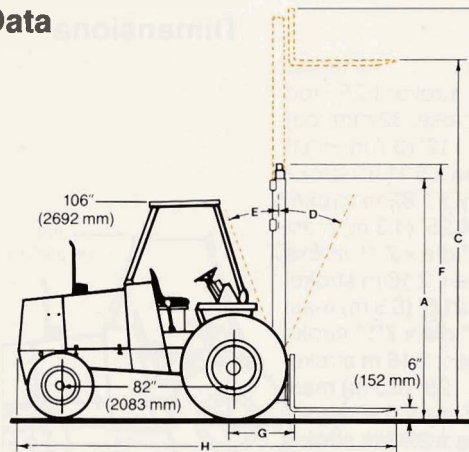
Hydraulic pump: Positive displacement, gear type.
Pump capacity:
 23 gpm @ 2200 rpm @ 2000 psi
 (87.1 L/min @ 2200 r/min @ 13 790 kPa)
Control valve: Three spool—lift, tilt and sideshift
Control valve main relief pressure:
 2200 psi (15 168 kPa)
Filtration: 10 micron, full flow replaceable cartridge on return line.
 Condition indicator light for filter.

584E Site-View Mast Forklift

Cylinders

- Tilt (2) all masts
3.25" dia x 15" stroke, 1.25" rod
(83 mm dia x 381 mm stroke, 32 mm rod)
- Lift (2) all masts
3" dia x 7'1" stroke
(76 mm dia x 2.16 m stroke)
- Sideshift (1) all masts
2.5" dia x 6" stroke, 1.06" rod
(64 mm dia x 152 mm stroke, 27 mm rod)

Dimensional Data



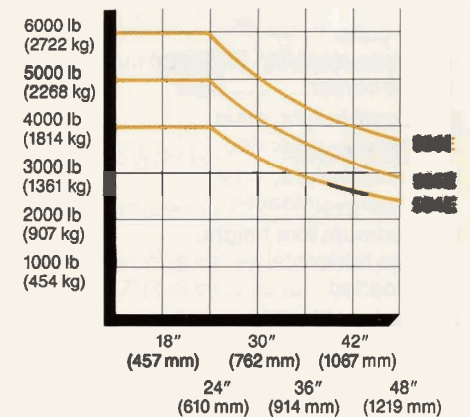
Tractor

	2-Wheel Drive	4-Wheel Drive
Tread — drive wheels	62" (1.57 m)	63" (1.60 m)
Tread — steering wheels	61" (1.55 m)	68" (1.73 m)
Overall width	81" (2.06 m)	83" (2.11 m)
Wheel base	82" (2.08 m)	82" (2.08 m)
Height to top of ROPS canopy	106" (2.69 m)	106" (2.69 m)
Mast — ground clearance	15" (381 mm)	15" (381 mm)
Rear axle differential	NA	9" (229 mm)
Drive shaft guard	NA	12" (305 mm)
Transfer case	NA	14" (356 mm)

Operational Data — 584E

	14.25' (4.3 m) Mast	21.5' (6.6 m) Mast
Lift capacity — Maximum at 24" (610 mm) load center	4000 lb (1814 kg)	*4000 lb (1814 kg)
A Overall height, mast closed — unloaded	9'8" (2.95 m)	9'10" (3.00 m)
B Overall height, mast raised — unloaded	16'9" (5.11 m)	24'1" (7.34 m)
C Maximum fork height, forks horizontal — unloaded	14'4" (4.37 m)	21'5" (6.53 m)
D Degrees tilt — forward	31°	31°
E Degrees tilt — rearward	9°	9°
F Overall height at low carry, forks 6" (152 mm) off the ground	9'11" (3.02 m)	10'2" (3.10 m)
Rate of lift — maximum load	63 fpm (.32 m/s)	93 fpm (.47 m/s)
Mast type — number of stages	2	3
G Reach from centerline of drive wheels	31" (787 mm)	34" (864 mm)
H Overall length	15'5" (4.7 m)	15'7" (4.75 m)
Lateral fork adj. — — inside dimension	38.5" (.98 m)	38.5" (.98 m)
— outside dimension	46.5" (1.18 m)	46.5" (1.18 m)
Sideshift — from center	3" (76 mm)	3" (76 mm)
	2" x 4" x 48" (51 mm x 102 mm x 1219 mm)	2" x 4" x 48" (51 mm x 102 mm x 1219 mm)
Forks (set of two)	350 lb (159 kg)	350 lb (159 kg)

Load Center Chart



From load center to face of fork.

Lift capacities rated at 24" (610 mm) load center. Chart shows reduction in lift capacity as load center increases. Lift height also affects lift capacity. See Operational Data for details.

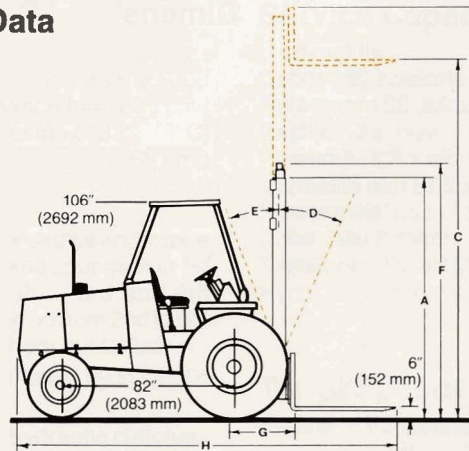
*The 21.5' (6.6 m) mast lifts 4000 lb (1814 kg) to 15' (4.6 m) and 2500 lb (1134 kg) to 21.5' (6.6 m).

585E Site-View Mast Forklift

Cylinders

Tilt (2)	all masts
	3.25" dia x 15" stroke, 1.25" rod (83 mm dia x 381 mm stroke, 32 mm rod)
Lift (2)	12' (3.7 m) mast
	3" dia x 5'11.5" stroke (76 mm dia x 1.82 m stroke)
Lift (2)	14.25' (4.3 m) mast
	3" dia x 7'1" stroke (76 mm dia x 2.16 m stroke)
Lift (2)	21.5' (6.6 m) mast
	3" dia x 7'1" stroke (76 mm dia x 2.16 m stroke)
Lift (2)	28' (8.5 m) mast
	3" dia x 9'4" stroke (76 mm dia x 2.83 m stroke)
Sideshift (1)	all masts
	2.5" dia x 6" stroke, 1.06" rod (64 mm dia x 152 mm stroke, 27 mm rod)

Dimensional Data



Tractor

	2-Wheel Drive	4-Wheel Drive
Tread — drive wheels	62" (1.57 m)	63" (1.60 m)
Tread — steering wheels	61" (1.55 m)	68" (1.73 m)
Overall width	81" (2.06 m)	83" (2.11 m)
Wheel base	82" (2.08 m)	82" (2.08 m)
Height to top of ROPS canopy	106" (2.69 m)	106" (2.69 m)
Mast — ground clearance	15" (381 mm)	15" (381 mm)
Rear axle differential	NA	9" (229 mm)
Drive shaft guard	NA	12" (305 mm)
Transfer case	NA	14" (356 mm)

Operational Data — 585E

	12' (3.7 m) Mast	14.25' (4.3 m) Mast	21.5' (6.6 m) Mast	28' (8.5 m) Mast
Lift capacity — Maximum at 24" (610 mm) load center	5000 lb (2268 kg)	5000 lb (2268 kg)	**5000 lb (2268 kg)	**5000 lb (2268 kg)
A Overall height, mast closed — unloaded	8'8" (2.64 m)	9'9" (2.97 m)	9'11" (3.02 m)	12' (3.66 m)
B Overall height, mast raised — unloaded	14'7" (4.45 m)	16'10" (5.13 m)	24' (7.32 m)	30'7" (9.32 m)
C Maximum fork height, forks horizontal — unloaded	12'1" (3.68 m)	14'5" (4.39 m)	21'5" (6.53 m)	28' (8.53 m)
D Degrees tilt — forward	31°	31°	31°	31°
E Degrees tilt — rearward	9°	9°	9°	9°
F Overall height at low carry, forks 6" (152 mm) off the ground	8'9" (2.67 m)	10' (3.05 m)	10'1" (3.07 m)	12'3" (3.73 m)
Rate of lift — maximum load	63 fpm (.32 m/s)	63 fpm (.32 m/s)	93 fpm (.47 m/s)	93 fpm (.47 m/s)
Mast type — number of stages	2	2	3	3
G Reach from centerline of drive wheels	33" (838 mm)	33" (838 mm)	35" (889 mm)	34" (864 mm)
H Overall length	15'9" (4.80 m)	15'9" (4.80 m)	16'2" (4.93 m)	15'9" (4.80 m)
Lateral fork adjustment — inside dimension	48.5" (1.23 m)	48.5" (1.23 m)	50.5" (1.28 m)	50.5" (1.28 m)
— outside dimension	58.5" (1.49 m)	58.5" (1.49 m)	58.5" (1.49 m)	58.5" (1.49 m)
Sideshift — from center	3" (76 mm)	3" (76 mm)	3" (76 mm)	3" (76 mm)
Forks (set of two)	2" x 5" x 48" (51 mm x 127 mm x 1219 mm)		2" x 4" x 48" (51 mm x 102 mm x 1219 mm)	
	426 lb (193 kg)		350 lb (159 kg)	

**The 21.5' (6.6 m) mast lifts 5000 lb (2268 kg) to 12' (3.7 m), 4000 lb (1814 kg) to 15' (4.6 m) and 2500 lb (1134 kg) to 21.5' (6.6 m). The 28' (8.5 m) mast lifts 5000 lb (2268 kg) to 12' (3.7 m), 4000 lb (1814 kg) to 15' (4.6 m), 2500 lb (1134 kg) to 21' (6.4 m) and 1000 lb (455 kg) to 28' (8.5 m).

586E Forklift

Cylinders

- Tilt (2) all masts
3.25" dia x 15" stroke, 1.25" rod
(76 mm dia x 254 mm stroke, 32 mm rod)
- Lift (2) 12' (3.7 m) mast
3" dia x 5'11.5" stroke
(76 mm dia x 1.82 m stroke)
- Lift (2) 14.25' (4.3 m) mast
3" dia x 7'1" stroke
(76 mm dia x 2.16 m stroke)
- Lift (2) 21.5' (6.6 m) mast
3" dia x 7'1" stroke
(76 mm dia x 2.16 m stroke)
- Lift (3) 14.25' (4.3 m) freelif mast
1st stage, 2 cylinders,
2.6" dia x 3'5" stroke
(66 mm dia x 1.04 m stroke)
2nd stage, 1 cylinder
2.4" dia x 7' stroke
(61 mm dia x 2.13 m stroke)
- Lift (3) 21.5' (6.6 m) freelif mast
1st stage, 1 cylinder
4.0" dia. x 3'6" stroke
(102 mm dia. x 1.07 m stroke)
2nd stage, 2 cylinders
2.38" dia x 7' stroke
(60 mm dia x 2.13 m stroke)
- Sideshift (1) all masts
2.5" dia x 6" stroke, 1.06" rod
(64mm dia x 152 mm stroke, 27 mm rod)

Site-view mast is not available on the 14.25' (4.3 m) or 21.5' (6.6 m) freelif masts.

Operational Data — 586E

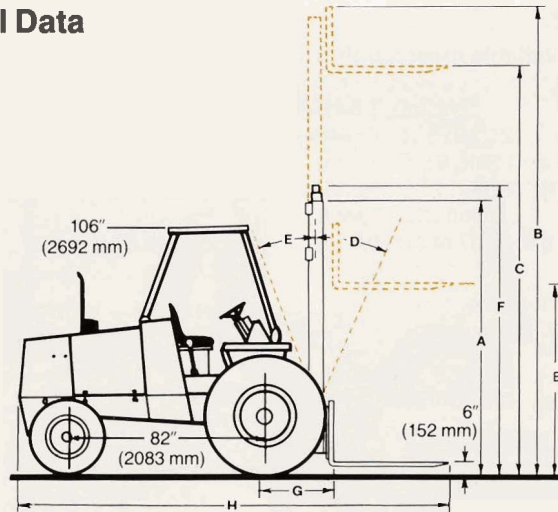
	12' (3.7 m) Mast	14.25' (4.3 m) Mast	21.5' (6.6 m) Mast	14.25' freelif (4.3 m) Mast	21.5' freelif (6.6 m) Mast
Lift capacity — Maximum at 24" (610 mm) load center	6000 lb (2722 kg)	6000 lb (2722 kg)	***6000 lb (2722 kg)	6000 lb (2722 kg)	6000 lb (2722 kg)
A Overall height, mast closed — unloaded	8'8" (2.64 m)	9'9" (2.97 m)	9'11" (3.02 m)	9'9.5" (2.99 m)	10'2" (3.10 m)
B Overall height, mast raised — unloaded	14'7" (4.45 m)	16'10" (5.13 m)	24' (7.32 m)	16'9.5" (5.12 m)	24'2" (7.37 m)
B ₁ Freelif	—	—	—	7' (2.13 m)	7' (2.13 m)
C Maximum fork height, forks horizontal — unloaded	12'1" (3.68 m)	14'5" (4.39 m)	21'5" (6.53 m)	14' (4.27 m)	21' (6.40 m)
D Degrees tilt — forward	31°	31°	31°	30°	31°
E Degrees tilt — rearward	9°	9°	9°	10°	9°
F Overall height at low carry, forks 6" (152 mm) off the ground	8'9" (2.67 m)	10' (3.05 m)	10'1" (3.07 m)	9'9.5" (2.99 m)	10'2" (3.10 m)
Rate of lift — maximum load	63 fpm (.32 m/s)	63 fpm (.32 m/s)	93 fpm (.47 m/s)	90 fpm avg. (.46 m/s)	89 fpm avg. (.45 m/s)
Mast type — number of stages	2	2	3	2	3
G Reach from centerline of drive wheels	33" (838 mm)	33" (838 mm)	35" (889 mm)	32" (813 mm)	35" (889 mm)
H Overall length	16'1" (4.90 m)	16'1" (4.90 m)	16'2" (4.93 m)	16'2" (4.93 m)	16'3" (4.95 m)
Lateral fork adjustment					
— inside dimension	48.5" (1.23 m)	48.5" (1.23 m)	48.5" (1.23 m)	48.5" (1.23 m)	48.5" (1.23 m)
— outside dimension	58.5" (1.49 m)	58.5" (1.49 m)	58.5" (1.49 m)	58.5" (1.49 m)	58.5" (1.49 m)
Sideshift — from center	3" (76 mm)	3" (76 mm)	3" (76 mm)	3" (76 mm)	3" (76 mm)

2" x 5" x 48"
(51 mm x 127 mm x 1219 mm)
426 lb (193 kg)

Forks (set of two) 426 lb (193 kg)

***The 21.5' (6.6 m) mast lifts 6000 lb (2722 kg) to 12' (3.7 m), 4000 lb (1814 kg) to 15' (4.6 m) and 2500 lb (1134 kg) to 21.5' (6.6 m).

Dimensional Data



Tractor

	2-Wheel Drive	4-Wheel Drive
Tread — drive wheels	62" (1.57 m)	63" (1.60 m)
Tread — steering wheels	61" (1.55 m)	68" (1.73 m)
Overall width	81" (2.06 m)	83" (2.11 m)
Wheel base	82" (2.08 m)	82" (2.08 m)
Height to top of ROPS canopy	106" (2.69 m)	106" (2.69 m)
Mast — ground clearance	15" (381 mm)	15" (381 mm)
Rear axle differential	NA	9" (229 mm)
Drive shaft guard	NA	12" (305 mm)
Transfer case	NA	14" (356 mm)

Equipment Data

Mast Options

Model	Available mast heights
584E	14.25', 21.5' (4.3 m, 6.6 m)
585E	12', 14.25', 21.5', 28' (3.7 m, 4.3 m, 6.6 m, 8.5 m)
586E	12', 14.25', 21.5', 14.25' and 21.5' freelif (3.7 m, 4.3 m, 6.6 m, 4.27 m and 6.6 m)

Tire Options

2-Wheel Drive

Used on all models

Size	Ply Rating	Tread	psi	Pressure (kPa)
STEERING				
8.00 x 16	10	I1	56	386
11L x 16	10	I1	52	359

Used on 584E with 14.25' (4.3 m) and 21.5' (6.6 m) masts

Size	Ply Rating	Tread	psi	Pressure (kPa)
DRIVE				
16.9 x 24	6	R4	18	124
16.9 x 24	6	R3	18	124
16.9 x 24	8	R4	24	165
17.5L x 24	8	R4	22	152
16.9 x 24	10	R4	28	193
17.5L x 24	10	R4	28	193
19.5L x 24	12	R4	30	207

Used on 585E with 12' (3.7 m),

14.25' (4.3 m) masts

Size	Ply Rating	Tread	psi	Pressure (kPa)
DRIVE				
16.9 x 24	8	R4	24	165
16.9 x 24	10	R4	28	193
17.5L x 24	10	R4	28	193
19.5L x 24	12	R4	30	207

Used on 585E with 21.5' (6.6 m), 28' (8.5 m)

Size	Ply Rating	Tread	psi	Pressure (kPa)
DRIVE				
16.9 x 24	10	R4	28	193
19.5L x 24	12	R4	30	207
17.5L x 24	10	R4	28	193

Used on 586E with 12' (3.7 m), 14.25' (4.3 m), 21.5' (6.6 m) standard masts, 14.25' (4.3 m) and 21.5' (6.6 m) freelif masts

Size	Ply Rating	Tread	psi	Pressure (kPa)
DRIVE				
16.9 x 24	10	R4	28	193
19.5L x 24	12	R4	30	207

4-Wheel Drive

Used on all models

Size	Ply Rating	Tread	psi	Pressure (kPa)
STEERING				
12 x 16.5	8	LUG	60	414
DRIVE				
19.5L x 24	12	R4	30	207

Shipping Weights

2-Wheel Drive Units

Model 584E — With 16.9 x 24, 6 PR, (R4) drive tires, 11L x 16, 10 PR (I 1) steering tires, 48" (1.22 m) forks, ROPS/FOPS and standard equipment.

with 14.25' (4.3 m) mast 10,416 lb (4725 kg)

with 21.5' (6.6 m) mast 11,025 lb (5001 kg)

Model 585E — With 16.9 x 24, 8 PR, (R4) drive tires, 11L x 16, 10 PR, (I 1) steering tires, 48" (1.22 m) forks, ROPS/FOPS and standard equipment.

with 12' (3.7 m) mast 11,330 lb (5139 kg)

with 14.25' (4.3 m) mast 11,488 lb (5211 kg)

with 21.5' (6.6 m) mast,
10 PR drive tires 12,806 lb (5809 kg)

with 28' (8.5 m) mast,
10 PR drive tires 13,138 lb (5959 kg)

Model 586E — With 16.9 x 24, 10 PR, (R4) drive tires, 11L x 16, 10 PR, (I 1) steering tires, 48" (1.22 m) forks, ROPS/FOPS and standard equipment.

with 12' (3.7 m) mast 12,002 lb (5444 kg)

with 14.25' (4.3 m) mast 12,160 lb (5516 kg)

with 21.5' (6.6 m) mast 13,169 lb (5973 kg)

with 14.25' (4.3 m) freelif mast . 12,202 lb (5535 kg)

with 21.5' (6.6 m) freelif mast . . 13,404 lb (6080 kg)

4-Wheel Drive Units

Model 584E — With 19.5L x 24, 12 PR drive tires, 12 x 16.5, NHS 8 PR steering tires, 48" (1.22 m) forks, ROPS/FOPS, standard equipment and:

14.25' (4.3 m) mast . . . 11,185 lb (5074 kg)

21.5' (6.6 m) mast 11,795 lb (5350 kg)

Model 585E — With 19.5L x 24, 12 PR drive tires, 12 x 16.5, NHS 8 PR steering tires, 48" (1.22 m) forks, ROPS/FOPS, standard equipment and:

12' (3.7 m) mast 12,066 lb (5473 kg)

14.25' (4.3 m) mast . . . 12,224 lb (5545 kg)

21.5' (6.6 m) mast,
10 PR drive tires . . . 13,520 lb (6133 kg)

28' (8.5 m) mast,
10 PR drive tires . . . 13,852 lb (6283 kg)

Model 586E — With 19.5L x 24, 12 PR drive tires, 12 x 16.5, 8 PR steering tires, 48" (1.22 m) forks, ROPS/FOPS, standard equipment and:

12' (3.7 m) mast 12,716 lb (5768 kg)

14.25' (4.3 m) mast . . . 12,874 lb (5840 kg)

21.5' (6.6 m) mast 13,883 lb (6297 kg)

14.25' (4.3 m) freelif mast 12,916 lb (5859 kg)

21.5' (6.6 m) freelif mast 14,118 lb (6404 kg)

Refer to the following add-on weights for optional equipment.

Side shifter attachment (all models) 40 lb (18 kg)

Lights (2 rear working lights, directional signals and 4-way flashers-shock mounted) 26 lb (12 kg)

Back-up alarm 5 lb (2.3 kg)

Ether starting aid 10 lb (5 kg)

Arm rests (standard seat only) 4 lb (1.8 kg)

Lock-up kit 15 lb (7 kg)

Slow moving vehicle emblem (SMV) 1 lb (0.5 kg)

Deluxe seat 7 lb (3.2 kg)

Dual battery cold start kit . . . 35 lb (16 kg)

Spark arresting muffler . . . 1.4 lb (.64 kg)

Tie-down installation 18 lb (8.16 kg)

3" Seat belt 2 lb (.9 kg)

Equipment Data

For Model 584:

48" (1219 mm) pallet forks (set of 2)
..... 350 lb (159 kg)

48" (1219 mm) concrete block tines
(set of 6) 505 lb (229 kg)

For Model 585 w/21.5' (6.6 m) and 28' (8.5 m) masts

48" (1219 mm) pallet forks (set of 2)
..... 350 lb (159 kg)

48" (1219 mm) concrete block tines
(set of 6) 505 lb (229 kg)

For Model 585 w/12' (3.7 m) and 14.25' (4.3 m) masts and all 586 models

48" (1219 mm) pallet forks (set of 2)
..... 426 lb (193 kg)

48" (1219 mm) concrete block tines
(set of 6) 505 lb (229 kg)

Standard Equipment

Case 4-390 diesel • 4-speed transmission with power shuttle and torque converter • Air cleaner (dry) with replaceable element • Antifreeze, to -20°F (-29°C) • Foot operated hydraulic brakes • Dual power steering cylinders • 12V electrical system with alternator • Flat front fenders • Heavy duty grille • Instrument panel and gauges including instrument panel lights, engine oil pressure warning light, engine speed indicator (tachometer), voltmeter, hour meter, key switch, fuel level gauge, engine coolant temperature gauge, air cleaner restriction indicator, transmission oil temperature gauge, hydraulic filter pressure warning light, horn button and tell-tale test switch • Two front and two rear work lights, tail lights • Oval upright muffler with deflector • Spin-off full flow oil filter • Parking brake • Wide walk-through platform • Bucket seat • Hydrostatic power steering • Hand and R.H. and L.H. foot throttles • ROPS/FOPS canopy • Engine side panels.

Optional Equipment

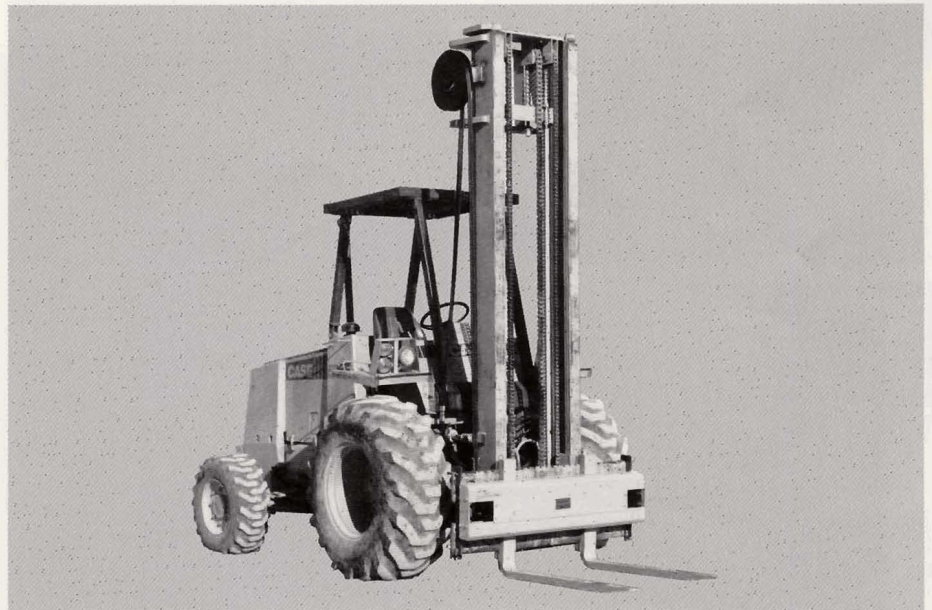
Lights: directional signals and 4-way flasher • Backup alarm • Slow-moving vehicle emblem (SMV) • Antifreeze, to -40°F (-40°C) • Side shifter • Pallet forks (set of 2) • Noise suppression kit • Lockup kit • 3" (76 mm) seat belt ILO 2" (51 mm) • Arm rests • Ether cold weather starting aid • Deluxe seat • Tires — various sizes • 4-wheel drive • Dual battery cold starting kit • Concrete block tines • Spark arresting muffler • Tie-down installation.

Allied Attachments Category IV

Contact your Case Dealer for full details on the attachments shown below.



Sims cab



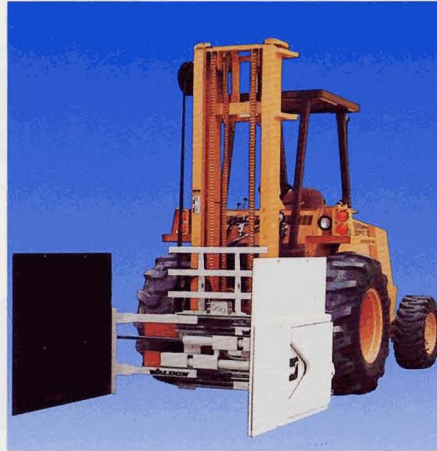
Quick set fork positioner

Allied Attachments Category IV

Contact your Case Dealer for full details on the attachments shown below.



360° Fork rotator



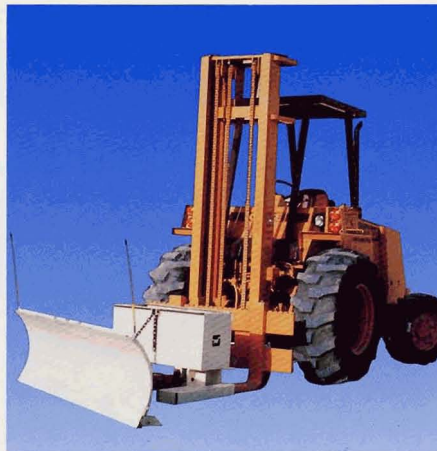
Side-shifting carton clamp



Dual drum handler



Material handling scoop



Adjustable angle snow plow



Single drum handler

Sold and serviced by:

Note: All specifications are stated in accordance with SAE standards or recommended practices, where applicable.

Important

J I Case Company reserves the right to change these specifications without incurring any obligation relating to such changes. Unit illustrated is equipped with Site-view mast.

J I Case

A Tenneco Company

700 State Street, Racine, WI 53404 U.S.A.

