



584C/585C/586C

# Construction King Forklifts



Case Construction King® ...  
the forklifts designed for easy maintenance

# componentized power train

**Helps bring maintenance time and cost down to size** — Before you decide on your next forklift, look ahead to what you can expect when it comes time for maintenance. The componentized power train permits removal and servicing of most individual components without disturbing other drive line members. A rugged unitized mainframe permits placement of drive components to achieve stability requirements in accordance with ANSI standards. It also shields the engine

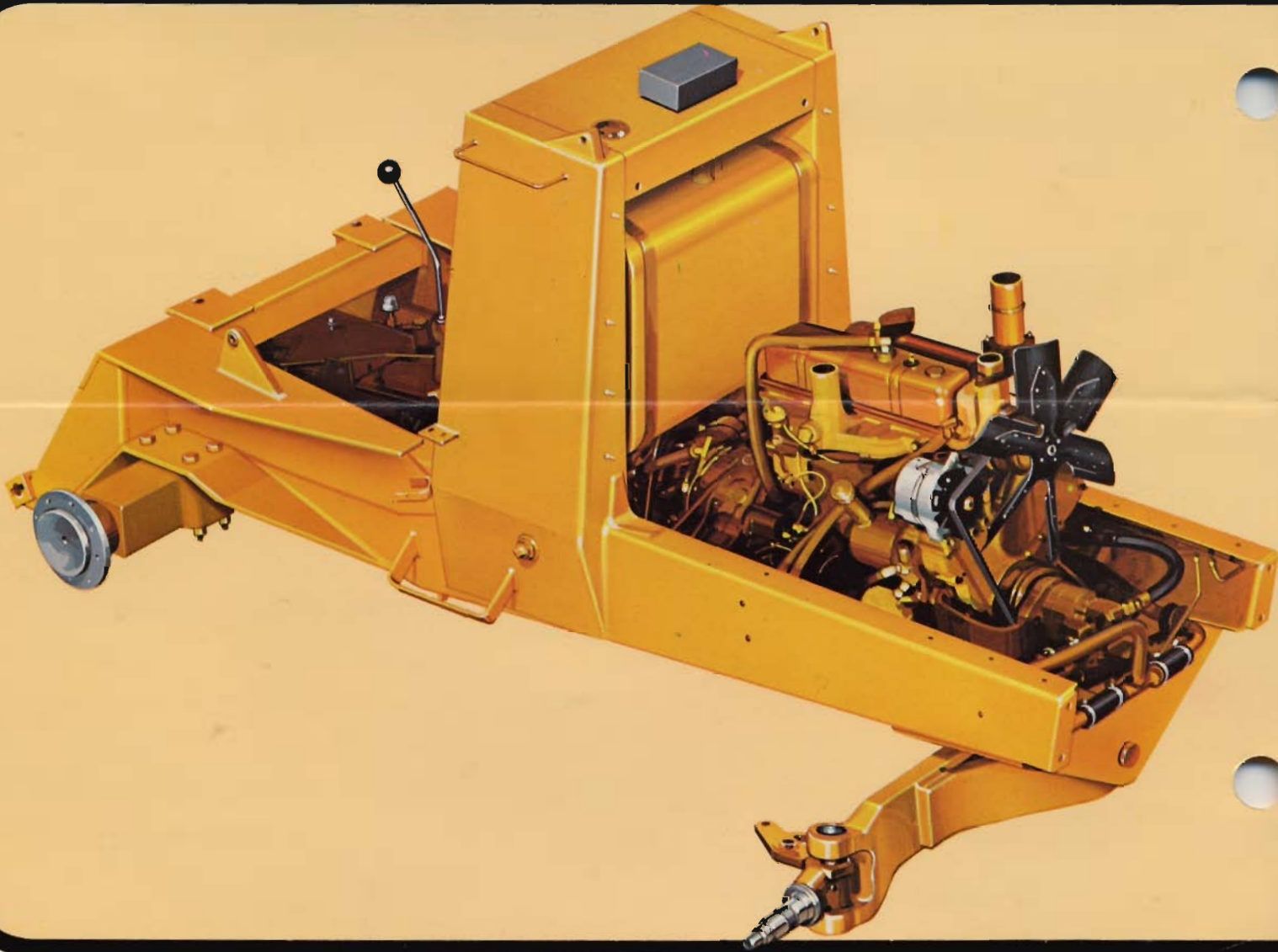
and power train from load carrying and lifting stresses.

**Torque converter — standard** — Construction King forklifts are powered by a dependable 50 net horsepower (37.3 kw), 207 c.i.d. (3393 cm<sup>3</sup>) Case diesel engine. The engine and the 2.53:1 ratio of the torque converter provide maximum tractive power.

**Clutch disconnect offers quick-lift capability** — Case makes it easy to ap-

ply full hydraulic power for fast load lifting through use of a clutch disconnect switch. It features neutral and drive settings. With the switch in neutral position, the operator can disconnect the flow of power to the drive wheels by depressing the left brake pedal. Full hydraulic power and speed then are available for lifting loads.

**Inching control** — Placing the clutch disconnect switch in the drive position provides continuous power to the



transmission. This results in good inching capabilities by permitting the operator to work the brakes against the torque converter.

**Smooth forward and reverse without clutching**—A four-speed transmission with synchronization between third and fourth gears permits shifting up from second to third to fourth and down to third on-the-go. This, combined with the no-clutch reversing power shuttle, helps keep jobs moving.

**Independent right and left brakes** — Right or left hydraulic brakes may be operated individually to assist in tight turns — an advantage at slippery, muddy worksites. Pedals latch together for simultaneous operation. Two-stage hydraulic master cylinders help lower braking effort for inching or brake assist steering.

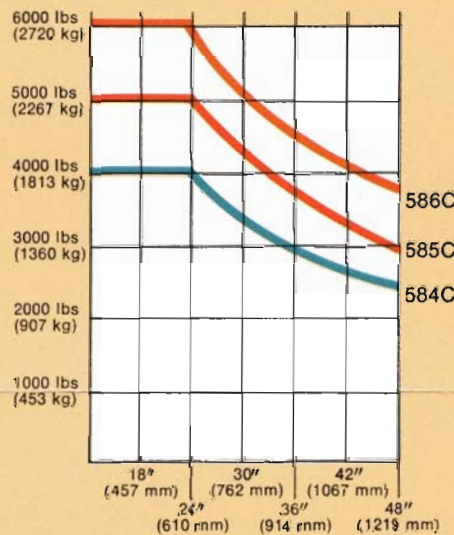
**Other standard features** — Hydrostatic power steering • Differential lock • Self-adjusting brakes • Over-center

parking brake • Dry-type air cleaner with replaceable filter element • Hydraulic level inspection gauge • Hydraulic pressure check port • Combination ROPS (rollover protective structure) and FOPS (falling object protective structure).



Instruments and gauges have printed circuitry and are clustered in a vandal-resistant plug-in module. Gauges incorporate international symbols and warning lights for monitoring a variety of operational functions.

### LOAD CENTER CHART



Load center — from face to fork



Case forklifts feature slider-type masts with narrow channels for maximum visibility. Bronze wear strips help insure stability at all lift heights. Hook-type carriages provide exact fork placement. Optional side shifter can speed up loading and unloading by shifting 3" (76 mm) either way of center to line loads up without moving the vehicle. Available for all masts except 28' (8.5 m) mast.



Walk-through compartment is designed for maximum comfort, job visibility and operating convenience. Seat and controls are located high and well forward — providing an ideal vantage point for picking up loads and depositing them on scaffolding or high stacks. Sloped hood and integral counterweight improve visibility to the rear.



Mast controls, located within easy reach at operator's right, are engineered to minimize effort required for lift, tilt and optional sideshift functions.



# Case forklifts...

... are designed for materials handling operations in a broad range of job applications. Integral counterweights shorten overall length and reduce turning radius, contributing to maneuverability for operating in tight quarters.

## 3 models to handle height and load requirements



### Lift capacities to full height

MAST HEIGHT	MODEL 584C		MODEL 585C		MODEL 586C	
	LBS.	KG	LBS.	KG	LBS.	KG
10.5' (3.2 m)	4000	1814	—	—	—	—
12' (3.7 m)	—	—	5000	2268	6000	2722
14.25' (4.3 m)	4000	1814	5000	2268	6000	2722
21.5' (6.6 m)	4000*	1814	5000**	2268	—	—
28' (8.5 m)	4000*	1814	—	—	—	—

\*The 21.5' (6.6 m) mast lifts 4000 lbs (1814 kg) to 15' (4.6 m) and 2500 lbs (1134 kg) to 21.5' (6.6 m). The 28' (8.5 m) mast lifts 4000 lbs (1814 kg) to 15' (4.6 m), 2500 lbs (1134 kg) to 21.5' (6.6 m) and 1000 lbs (455 kg) to 28' (8.5 m).

\*\*The 21.5' (6.6 m) mast lifts 5000 lbs (2268 kg) to 12' (3.7 m), 4000 lbs (1814 kg) to 15' (4.6 m) and 2500 lbs (1134 kg) to 21.5' (6.6 m).



**J I Case**

A Tenneco Company



700 State Street Racine, WI 53404 U.S.A.