

CASE

**800 SERIES
MOTOR GRADERS**



800 Series Motor Graders

The Performance Edge

Whether facing long-haul road construction jobs, snow-control projects or ditching applications, operators want a motor grader with rugged construction that's easy to operate and maintain. Case 800 Series motor graders deliver performance. With high-strength construction, advanced design features and outstanding visibility from the cab, Case graders have the performance edge for even the toughest conditions.

The Edge - Serviceability

Best-in-class maintainability as judged by SAE standard will help keep Case graders on the job. An industry-exclusive rear flip-up hood provides quick and easy access to the engine and all daily service points. Unlike other graders, there's no need to open a series of cumbersome doors to check daily service points. Just press the handle and the sloping hood quietly glides up, giving full view of daily check points and the powertrain.

The Edge - Durability

Rugged construction — from the beefy A-frame drawbar to the high-strength, versatile circle and moldboard — provides the brawn for a wide range of tough applications. The heavy-duty front and rear frame and the high-carbon steel moldboard provide long, dependable machine life.

The Edge - A Great View

The cab on Case graders provides the operator a great view to the full width of the moldboard, even at full articulation. Panoramic floor-to-ceiling glass delivers a bird's-eye view in all directions for total command of the work site.

It all adds up to maximum performance on the job. And, the Case 800 Series motor graders are backed by a network of Case dealers providing total solutions, flexible Case Credit financing and top-level customer support to keep your Case grader in like-new condition. That's the real performance edge.



845

Net Horsepower
140 (104 kW)
Operating Weight
29,777 lb. (13 535 kg)
Standard 12 ft. (3.65 m)
Moldboard



865/865DHP*

Net Horsepower
155 (116 kW)/168-190 (125-141 kW)*
Operating Weight
32,077 lb. (14 550 kg)
Standard 13 ft. (3.96m)
Moldboard

* Dual Horsepower



Table of Contents

Productivity	4-5
Operator Environment	6-7
Serviceability	8-9
Attachments	10



885

Net Horsepower
 205 (153 kW)
Operating Weight
 37,950 lb. (17 250 kg)
Standard 14 ft. (4.26 m)
Moldboard



800 Series

Productivity

QUICK FACTS

- ✓ Dual Horsepower on Case 865 Provides Extra Power
- ✓ Frame Articulation and Wheel Angle Provide Performance Flexibility
- ✓ Differential Lock for Maximum Traction
- ✓ Heavy-Duty Frame and Components

Smart design boosts performance

Many design factors are part of making productive road machines like Case 800 Series motor graders. It all starts with the clean, modern-styled machine. Obstructions are minimized with hoses hidden for optimum protection, yet easily accessible. The hallmark Case sloping hood provides excellent visibility to the rear. The cab is designed to give the operator a clear view to the circle, moldboard and tires. A robust lighting package provides extra visibility when it's needed most (dark, stormy or snowy conditions).

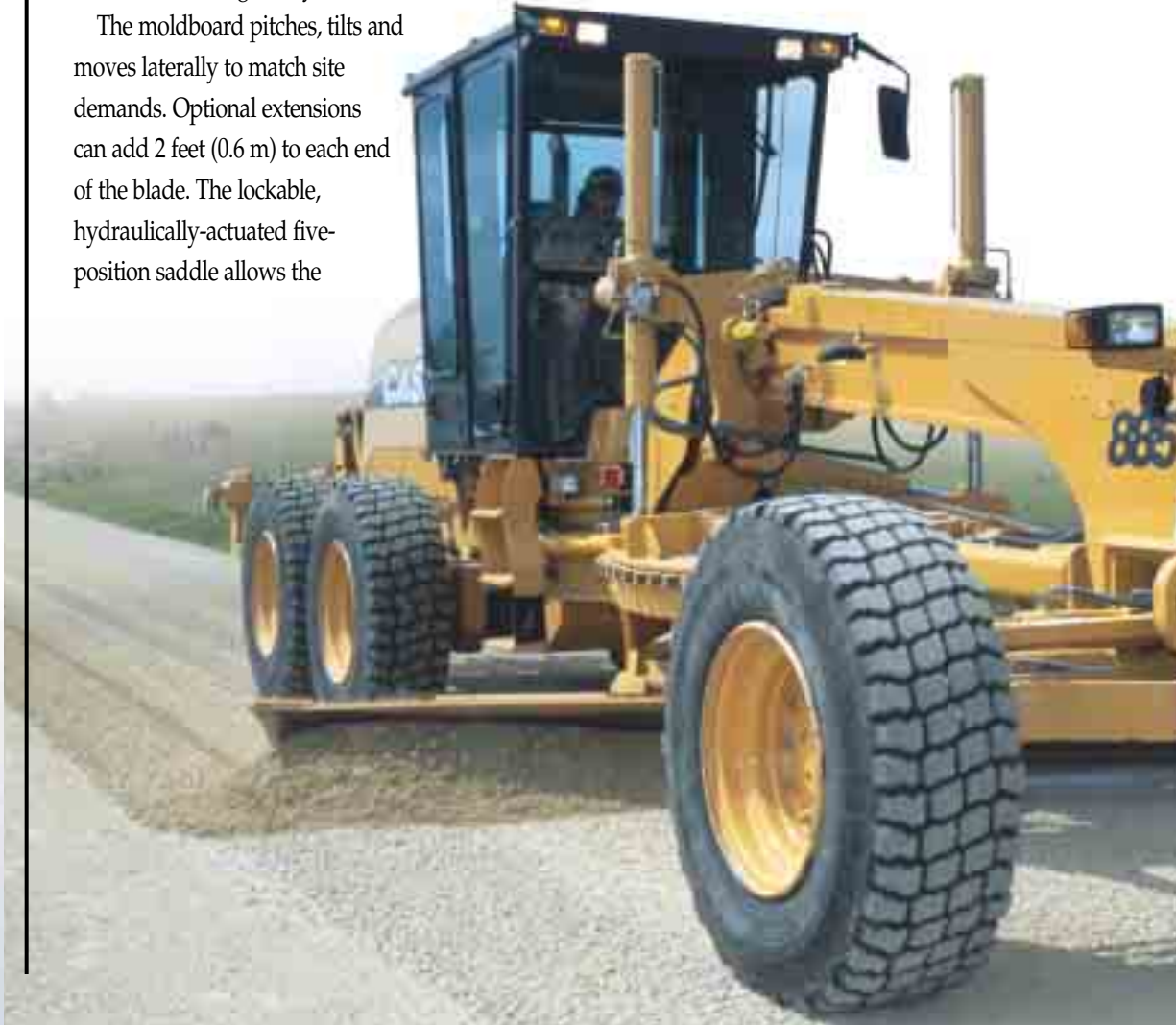
Rugged construction provides the strength to handle any job conditions. The durable front A-frame drawbar and high-strength circle provide plenty of stability. A single-drive-gear motor turns the circle up to 360 degrees for maximum turning ability.

The moldboard pitches, tilts and moves laterally to match site demands. Optional extensions can add 2 feet (0.6 m) to each end of the blade. The lockable, hydraulically-actuated five-position saddle allows the



Front wheels lean for traction and moldboard control.

blade to tilt up to 90 degrees for shaping banks. The moldboard is made of high-carbon steel for long life, and its involute multi-radius design cuts, mixes and rolls material off the moldboard in an effortless wave.





The A-frame drawbar and high-strength circle provide stability, power and maximum turning performance to the moldboard.



Five-position saddle tilts up to 90 degrees for cutting ditches or shaping banks.

Case graders articulate 25 degrees left or right, allowing the rear wheels and moldboard to be in the ditch pushing material while the front wheels remain on the road or bank for optimum balance. The front wheels angle 17.5 degrees left or right to provide counter-force to the blade and prevent side drift. The planetary rear axle has an operator-activated standard differential lock or optional limited-slip differential to provide maximum tractive effort — no matter what the conditions.

Powered by turbocharged six-cylinder Cummins engines, Case motor graders deliver up to 205 net horsepower (153 kW) and operating speeds up to 27 mph (40 kph). The powershift direct-drive transmission provides the flexibility for manual control to

best match job conditions, or automatic shift when roading between job sites. An inching pedal gives the operator creep control for precise grading.



A hydraulically driven fan means a quiet, efficient, cooler-running engine that provides maximum horsepower when tough conditions require the most from your Case motor grader.

800 Series

Operator Environment

QUICK FACTS

- ✓ *Low-Effort, Industry-Standard Controls*
- ✓ *Expansive Glass for Panoramic View*
- ✓ *High-Capacity Heater/Defroster, Air Conditioning and Pressurization System*
- ✓ *Isomount® Cab Insulated from Noise*

Comfort and visibility enhance operat

Case designed the 800 Series cab for operator comfort and productivity. Industry-standard control patterns and a deluxe suspension seat with lumbar control will make any operator comfortable and productive. All-around visibility is aided by 85 square feet of floor-to-ceiling glass, a sloping rear hood, tinted glass, front and rear sunshades and breakaway heavy-duty side mirrors. The Isomount® cab reduces noise and vibration to a low 75 dB(A), lessening distractions and reducing fatigue.

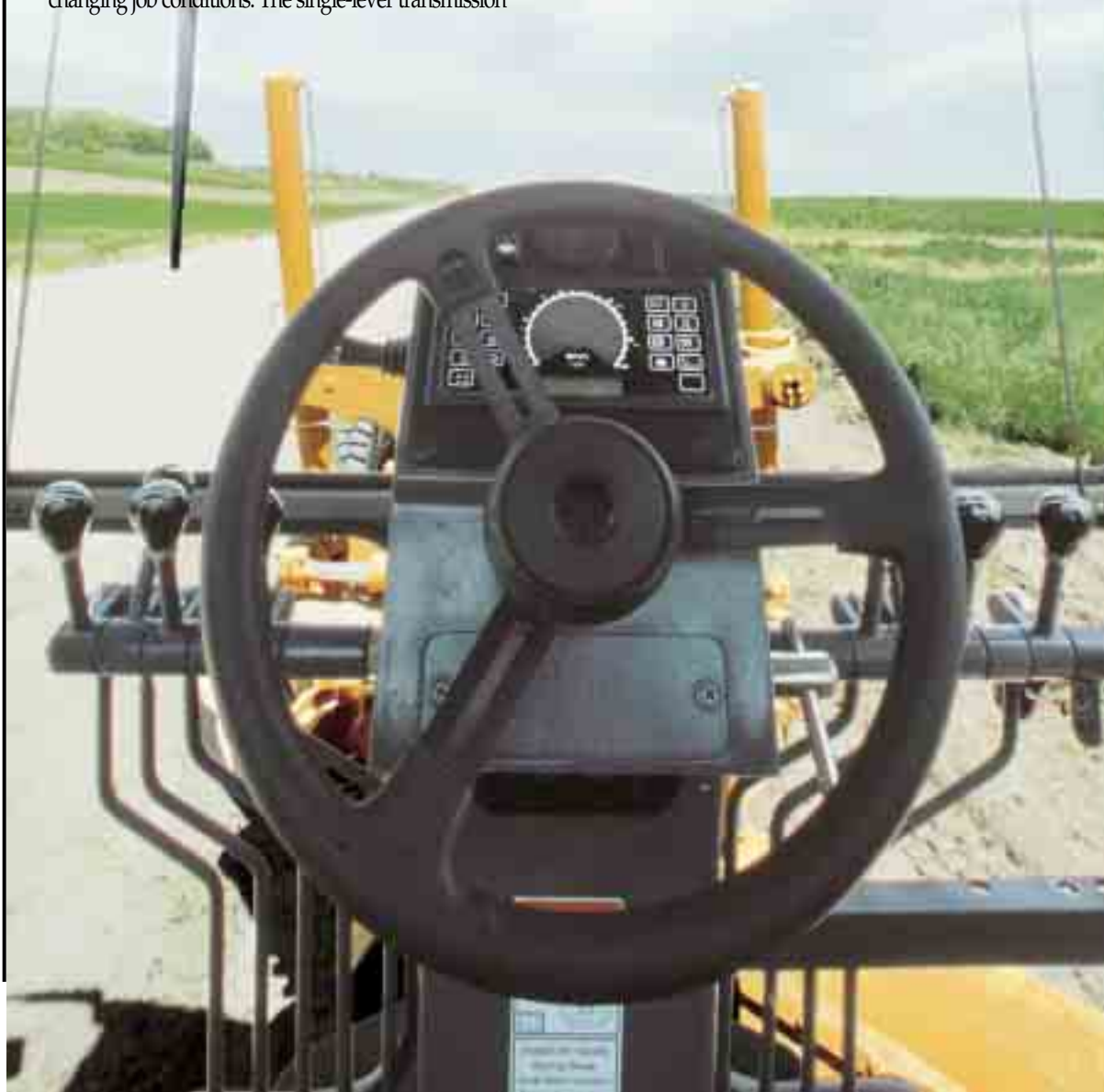
The cab is positioned to provide the clearest sight lines to the moldboard and tires for precise blade positioning and operation.

The steering column and wheel pitch and tilt for maximum comfort. Closed-center, load-sensing hydraulics make the grader controls easy to finesse for changing job conditions. The single-lever transmission

control has a bump-style shift feature that moves easily between four reverse and eight forward gears. The operator has easy access to gauges and switches on the instrument panel built into the steering column. Grader functions are electronically monitored to provide instant information on fluid pressures, coolant temperature and more.

Cab temperature, airflow and comfort are optimized by a filtered high-capacity heater/defroster, air conditioning and pressurization system. Left and right cab doors can be locked in open position for cross-ventilation and released with a foot-level latch.

Because operator productivity is so crucial, Case made operator comfort a central theme in the design of the 800 Series. And it shows.



tion



Climate controls and other functions are within easy reach.



Floor-to-ceiling cab glass provides clear view of the moldboard and superior all-around visibility.



Lighting package provides visibility at night or in severe weather.



Industry-standard control patterns enhance productivity.



800 Series

Serviceability

QUICK FACTS

- ✓ Best-in-Class Maintainability
- ✓ Convenient Flip-Up Hood
- ✓ Ground-Level Fuel Fill
- ✓ Easy Access to Daily Checks
- ✓ FleetLink™ Management System

It's all in the details

Case 800 Series motor graders lead the industry with ease of service and maintenance. Rated on an SAE index for maintenance and serviceability, Case graders lead all major competitors. That means more productive time on the job. It all starts with the innovative one-piece tilt-up rear hood, which opens quickly and easily compared to the cumbersome swing-out doors on other graders. One press on the lockable handle and you have instant access to the engine, filters and daily service points.

Convenient flip-down panels along the edge of the hood provide additional access. This design makes easy work of checking fluid sight gauges, battery and oil dipsticks. Access is also convenient for filter checks and fluid replenishment. The exclusive ground-level fuel fill with lockable cap means no more climbing on the tandems to reach the fill port. Hydraulic test ports are conveniently located below the left side of the cab.



Ground-level fuel fill saves time and boosts productivity.

To make managing service and maintenance even easier, Case offers FleetLink™ — the total machine maintenance, fleet management and security service. Using satellite, cellular phone and Internet technology, FleetLink tracks machine utilization, location, hour usage, service intervals and more. FleetLink and your Case dealer can deliver seamless and virtually invisible machine service. That translates to more uptime and better productivity.



All grease zerts are easily accessed from ground level to speed daily service duties and increase productivity.

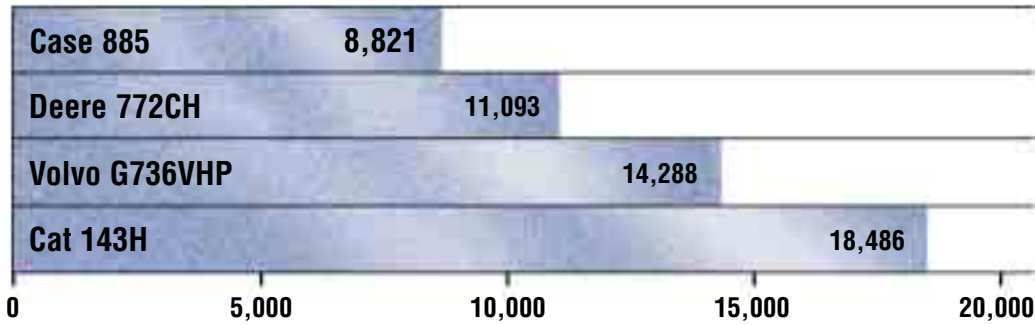


Drop-down side panels improve access to engine components and daily check points.



A convenient service door located on the side of the cab allows easy access to electrical connectors without removing interior cab panels.

Industry-Best Serviceability: Shortest is easiest.



The SAE-J817 serviceability index is based on the location, access, operation and frequency of service per recommendations in the Operator's Manual. The length of the bar indicates the relative amount of time the machine requires for service. The results are clear: Case has the edge.



The hydraulic diagnostic panel located on the left side of the grader makes quick work of finding hydraulic problems. Fast diagnosis of hydraulic problems reduces downtime and keeps you profitable.



800 Series

Attachments

QUICK FACTS

- ✓ Scarifier with 46-inch (1.17 m) Cut
- ✓ Ripper with 83-inch (2.12 m) Cut
- ✓ V-plow and Wing for Snow Control
- ✓ Dozer Blade
- ✓ Moldboard Extensions

Do more with each pass

Extend the capabilities of Case motor graders with a range of attachments. Whether the job involves ripping up existing roadbed, breaking up hard-packed surfaces or plowing, Case has an attachment solution. Choose from a front scarifier with up to 11 teeth (six standard), rear ripper with up to five teeth (three standard) or a rear ripper/scarifier combination with up to nine scarifier teeth (five standard) and up to five ripper teeth (three standard). A 9-foot-wide dozer blade is also available. Moldboard extensions will add up to 2 feet on each end of the blade.

For snow control, attachments will turn Case 800 Series motor graders into high-capacity plowing machines. Options include a V-plow for cutting a path and a snow wing for pushing snow far off the road.

For tight-precision grading, optional guidance systems provide unmatched control and laser-accurate grades. Guidance systems help get the most from each pass and use material more efficiently. See your Case dealer today to determine which options work best for you.



Front scarifier has up to 11 teeth (six standard).



Rear ripper includes up to five teeth (three standard).



Snow-control attachments include a wing for pushing material far off the road.



CASE



845



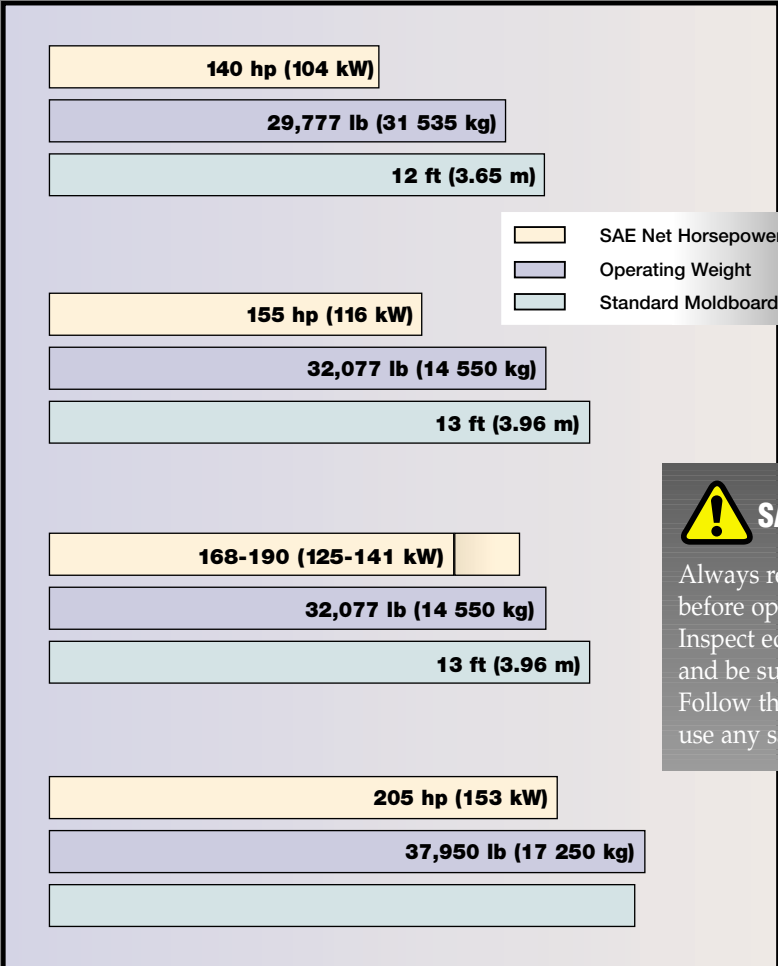
865

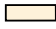




865DHP



885



 SAE Net Horsepower
 Operating Weight
 Standard Moldboard Size



SAFETY NEVER HURTS!™

Always read the Operator's Manual before operating any equipment. Inspect equipment before using it, and be sure it is operating properly. Follow the product safety signs and use any safety features provided.

NOTE: All specifications are stated in accordance with SAE Standards or Recommended Practices, where applicable.

IMPORTANT: Case Corporation reserves the right to change these specifications without notice and without incurring any obligation relating to such change. Units shown may be equipped with non-standard equipment.

© 2002 CASE CORPORATION
All Rights Reserved. Case and Case Credit are registered trademarks of Case Corporation.

Lexan is a registered trademark of the General Electric Co.
Goodyear is a trademark of Goodyear Tire & Rubber Company.
Galaxy, Beefy Baby and Fat Foot are trademarks of the Galaxy Tire Co.
AirBoss® and Altrakka are trademarks of IATCO Industries Inc.

This literature has been published for worldwide circulation. Availability of some models and equipment builds vary according to the country in which the equipment is used. The illustrations and text may include optional equipment and accessories and may not include all standard equipment. Your Case dealer/distributor will be able to give you details of the products and their specifications available in your area.

Attachments from other manufacturers are shown for illustration only. Case Corporation does not warrant the safety or reliability of these attachments.

Visit Case Corporation on the Web at: <http://www.casece.com>

CASE CORPORATION
700 STATE STREET
RACINE, WI 53404 U.S.A.

CASE CANADA CORPORATION
450 SHERMAN AVENUE NORTH
HAMILTON, ON L8N 4C4 CANADA

CASE EUROPE HEADQUARTERS
EUROPE, AFRICA, MIDDLE EAST
18, PLACE DES NYMPHEAS
ZI PARIS NORD 11
95915 ROISSY CDG CEDEX FRANCE

CASE LATIN AMERICAN HEADQUARTERS
700 STATE STREET
RACINE, WI 53404 U.S.A.

CASE ASIA/PACIFIC REGION
CASE CORPORATION PTY. LTD.
31-67 KURRAJONG AVENUE
ST. MARYS
NEW SOUTH WALES 2760
AUSTRALIA

