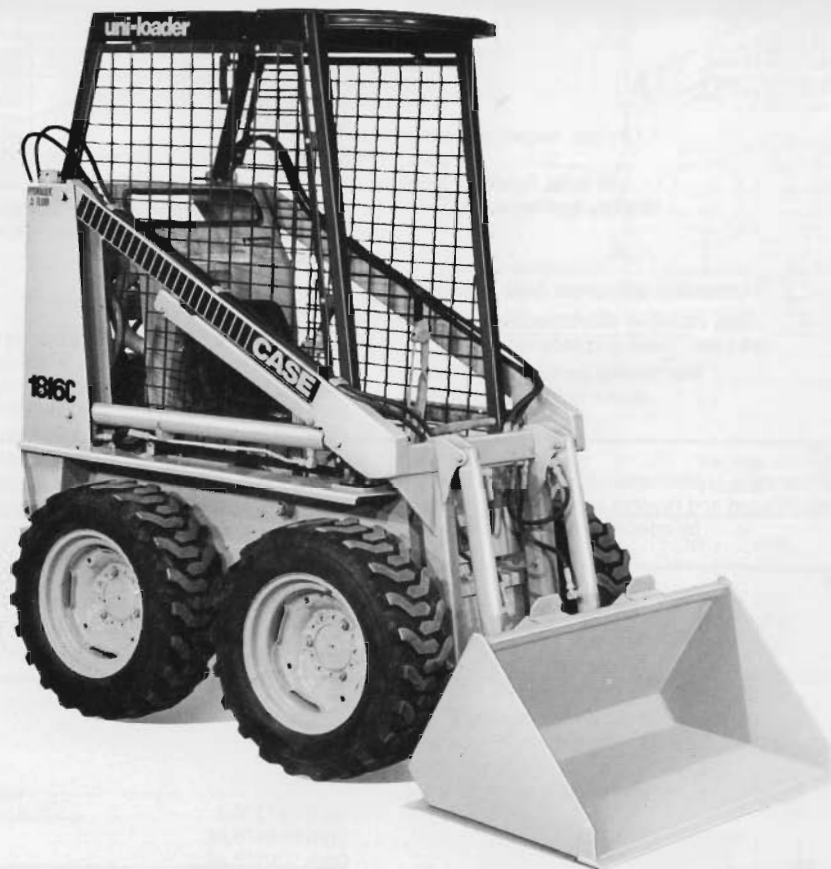


**case**

# 1816C Uni-Loader<sup>®</sup>



#### **HYDROSTATIC DRIVE**

Delivers smooth constant power with infinitely variable speeds from 0 to 4.8 mph (0 to 7.7 km/h).

#### **HAND CONTROL LEVERS**

Two levers provide full control of power, speed, direction, plus all loader functions.

#### **16 (11.9 kW) NET HORSEPOWER**

Onan two cylinder 43.3 in<sup>3</sup> (710 cm<sup>3</sup>) air-cooled gas engine.

#### **830 LBS (377 kg) BREAKOUT FORCE**

Plenty of hydraulic power to pry out tough materials; fill bucket quickly.

Unit shown is equipped with non-standard items.

**J I Case**

A Tenneco Company

700 State Street Racine, WI 53404 U.S.A.



# 1816C UNI-LOADER SPECIFICATIONS

## ENGINE

Make and model ..... Onan, B43M - GA016/3902A  
 Maximum rated horsepower  
 (1) SAE net ..... 16 @ 3600 rpm  
 (11.9 kW @ 3600 r/min)  
 Bore and stroke ..... 3.25" x 2.625"  
 (83mm x 67mm)  
 Displacement ..... 43.3 in<sup>3</sup> (710 cm<sup>3</sup>)  
 Number of cylinders ..... Two  
 Cooling ..... Air  
 Type of fuel ..... Unleaded gasoline  
 Fuel supply ..... Electric fuel pump and carburetor  
 Air cleaner ..... Dry type, replaceable cartridge  
 Oil filter ..... Full flow, replaceable spin-on cartridge  
 Lubrication ..... Positive pressure

(1) Per SAE J607 definition.

## ELECTRICAL

System voltage ..... 12 volts, negative ground  
 Battery ..... 32 amp  
 Alternator ..... 20 amp, fly wheel type  
 Ignition ..... Battery ignition with points

## POWER TRAIN

Type ..... Hydrostatic with chain drive to wheels  
 Transmission ..... Two variable displacement pumps  
 and two fixed displacement motors  
 Brakes parking (optional) ..... Mechanical parking brake locks  
 both front drive sprockets

## STEERING

Type ..... Independent — 360° counter-rotation. Steering,  
 braking, forward and reverse movement controlled  
 by operation of two hand levers

## HYDRAULIC SYSTEM

Main relief setting ..... 1150 ± 50 psi @ 3600 rpm  
 (7929 ± 345 kPa @ 3600 r/min)  
 Lift cylinders (2) ..... 2" dia x 27" stroke, 1" rod  
 (51 mm dia x 686 mm stroke, 25 mm rod)  
 Tilt cylinders (2) ..... 2" dia x 13.1" stroke, 1" rod  
 (51 mm dia x 333 mm stroke, 25 mm rod)  
 Pump capacity ..... 8 gpm @ 3600 rpm @ 1100 psi  
 (30.3 L/min @ 3600 r/min @ 7584 kPa)

## LOADER OPERATIONAL DATA

Tipping Load —  
 SAE rated ..... 1035 lbs (469 kg)  
 Rated lift capacity  
 Manufacturer's rating ..... 700 lbs (318 kg)  
 Raising time with rated load in bucket ..... 5.4 sec  
 Lowering time, bucket empty ..... 3.7 sec  
 Rollback time from full dump to full rollback ..... 2 sec  
 Breakout force  
 Lift cylinders ..... 1050 lbs (476 kg)  
 Tilt cylinders ..... 830 lbs (377 kg)

## SERVICE CAPACITIES

	U.S.	Litres
Fuel tank	8.5 gal	32.2
Engine oil		
w/filter	2.3 qt	2.18
w/o filter	1.75 qt	1.66
Hydraulic reservoir		
w/filter	15 qt	14.2
w/o filter	14 qt	13.2

## WEIGHTS

**Shipping weight:** Includes 2 gal. (7.6 litres) fuel, no operator, no bucket, with 5.90 x 15 tires, ROPS and standard equipment: 1740 lbs (789 kg).

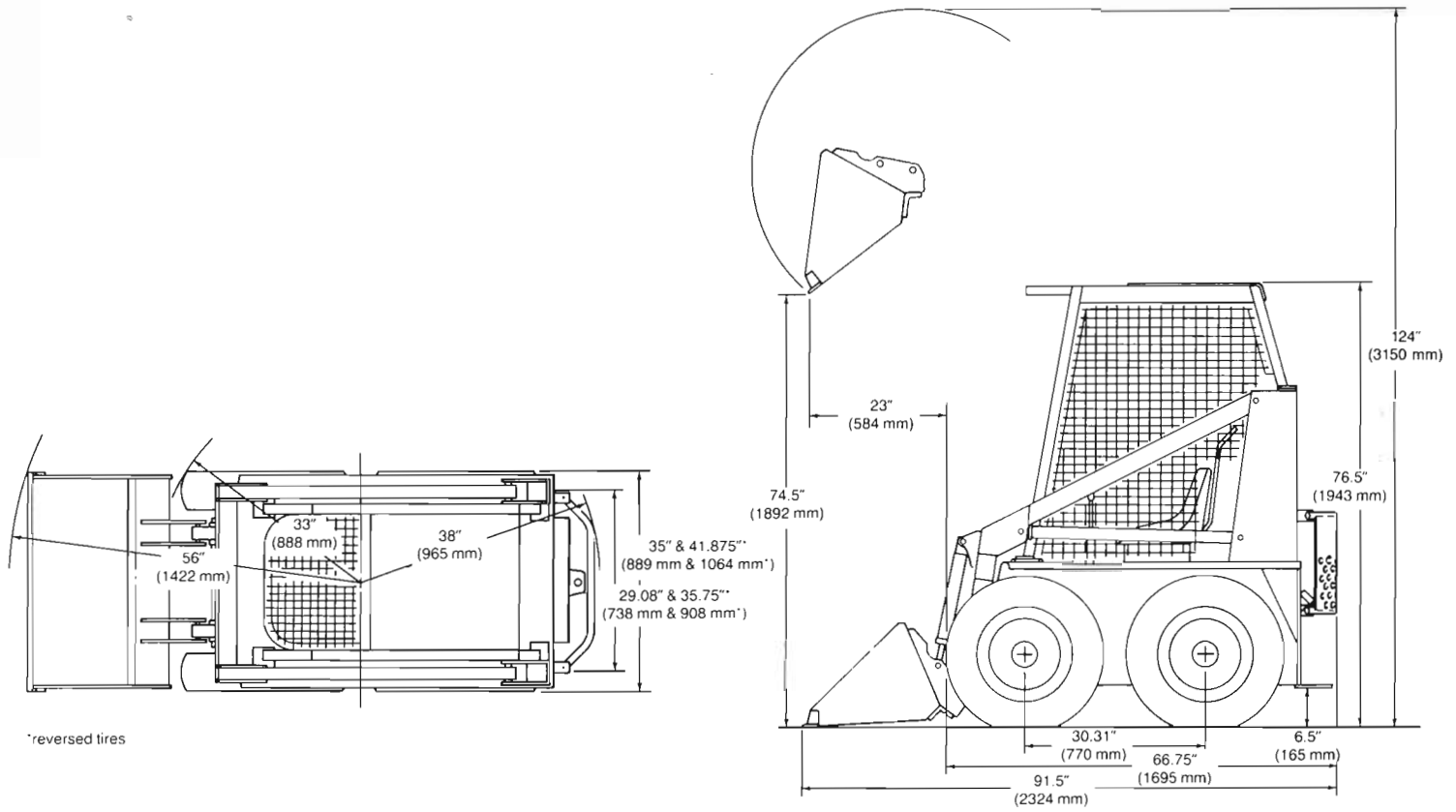
**Operating weight:** Includes full fuel, 175 lbs (79 kg) operator, 35" (889 mm) bucket, 5.90 x 15 tires, ROPS and standard equipment: 2065 lbs (937 kg).

## STANDARD EQUIPMENT

700 lbs (318 kg) loader lift capacity rating, with two double acting lift cylinders, less attachments, with controls and hydraulics • 16 horsepower (11.9 kW) Onan gasoline engine with electric fuel pump and battery ignition system • Key switch type starting • Enclosed flywheel alternator • 12 volt battery • Industrial dry-type air cleaner • Muffler • 8.0 gpm (30.3 L/min) hydraulic pump • Hydraulic oil filter with condition indicator and replaceable element • Ammeter • Hourmeter • Hand throttle • Hand choke • Hydrostatic transmission with chain drive to all wheels • Independent steering controls • Mechanical transmission disconnect • Operator's compartment heat shield • Seat belt • ROPS • Engine oil filter with replaceable element • Engine low oil pressure warning buzzer • Non-directional lug tires •

**NOTE:** Specifications taken with full fuel, 175 lbs (79 kg) operator, 35" (889 mm) dirt bucket, 5.90 x 15 4PR tires, ROPS and standard equipment, unless otherwise specified.





\*reversed tires

Bucket Type	Width		Struck Capacities		SAE Heaped Capacities		Weight		Dump Height		Dump Reach		Dump Angle	Overall Length	
	In	mm	ft <sup>3</sup>	m <sup>3</sup>	ft <sup>3</sup>	m <sup>3</sup>	lbs	kg	in	mm	in	mm		deg	in
Dirt	35	889	3.82	0.11	4.93	0.14	115	52	74.5	1892	23	584	38°	91.5	2324
Dirt	44	1118	4.84	0.14	6.34	0.18	130	59	74.25	1886	23	584	38°	91.5	2324
Light Material	48	1219	8.72	0.25	11.35	0.32	172	78	69.5	1765	29	737	38°	99.5	2527

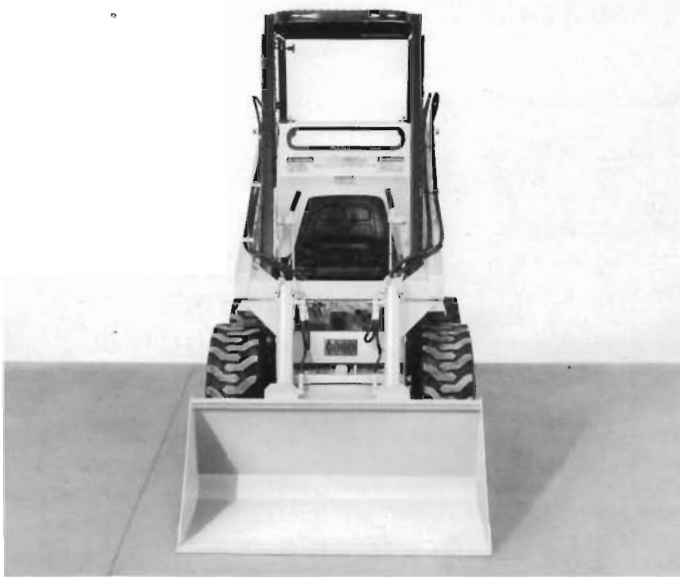
### MANURE FORK

- Number of tines ..... 7
- Width between each tine ..... 5.5" (140 mm)
- Overall width of tines ..... 34.5" (876 mm)
- Overall width of attachment ..... 35.5" (902 mm)
- Length of tine ..... 19.75" (502 mm)
- Hydraulic grapple available for manure fork.

### PALLET FORK

- Maximum width of forks ..... 29" (737 mm)
- Minimum width of forks ..... 7.5" (191 mm)
- Length of fork ..... 30" (762 mm)
- Overall width of attachment ..... 34" (864 mm)





**Sold and serviced by:**

**OPTIONAL EQUIPMENT (on basic machine)**

5.70 x 15, 4PR Chevron tread tires • 27 x 8.50 x 15, 4PR Terra extra traction tread tires • 27 x 8.50 x 15, 4PR Lug type tires • Mechanical parking brake • Rear counterweights • Auxiliary hydraulics •

**OPTIONAL EQUIPMENT (attachments)**

35" (889 mm), 44" (1118 mm) and 48" (1219 mm) buckets • Pallet fork. Manure fork • Manure fork grapple • Tool tach for front mounted equipment •

**NOTE:** All specifications are stated in accordance with ICED definitions or SAE standards or recommended practices, where applicable.

**Important**

J I Case Company reserves the right to change these specifications without notice and without incurring any obligation relating to such changes.