



case

1845 Uni-Loader®



- Hydrostatic drive
- 45 hp gasoline or diesel engine
- Water-cooled 4 cylinder Case engines

- Self leveling loader
- ROPS, parking brake and tool tach-standard

Unit shown is equipped with non-standard items.
Manufactured by J I Case Company, Racine Wisconsin USA.

1845 UNI-LOADER SPECIFICATIONS

ENGINES

Make and model	Case 159G (Gasoline)	Case 188D (Diesel)
Maximum rated horsepower		
(1) Gross	49 @ 2200 rpm 33,6 kW @ 2200 r/min	49 @ 2200 rpm 36,5 kW @ 2200 r/min
(2) SAE net	45 @ 2200 rpm 36,5 kW @ 2200 r/min	45 @ 2200 rpm 33,6 kW @ 2200 r/min
Bore and stroke	3.5" x 4.12" (89 mm x 105 mm)	3.81" x 4.12" (97 mm x 105 mm)
Displacement	159 in. ³ (2606 cm ³)	188 in. ³ (3080 cm ³)
Number of cylinders	Four	Four
Cooling	Water	Water
capacity	2 U.S. gals (7,6 liters)	2 U.S. gals (7,6 liters)
Type of fuel	Gasoline, regular	Diesel
Fuel tank capacity	19.5 U.S. gals (73,8 liters)	19.5 U.S. gals (73,8 liters)
Engine crankcase oil cap	5 U.S. quarts (4,73 liters)	5 U.S. quarts (4,73 liters)
Air filter	Dry type Replaceable element	Dry type Replaceable element
Electrical system		
Battery	12V 55 Amp hour	12V 95 Amp hour
Alternator	12V 35 Amp	12V 35 Amp
Ignition	Coil and points	

- (1) Manufacturer's rating of maximum engine horsepower or torque at flywheel when equipped with oil and water pumps. Fuel set at maximum quantity for this application. Corrected to sea level 29.92" (760 mm) Hg and 60°F (16°C) dry air.
- (2) SAE net flywheel horsepower or torque of engine as applied to this vehicle when equipped with operating accessories including oil and water pumps, alternator, air cleaner, fan and muffler. Corrected to 500' (152,4 m) altitude with .38" (10 mm) Hg vapor pressure 29.38" (746 mm) Hg observed barometer and 85°F (29°C).

POWER TRAIN

Type	Hydrostatic with two stage chain drive to all wheels.
Transmission	Tandem pump assembly consisting of two variable displacement pumps, gear type charge pump, gear type system pump, two fixed displacement motors and two self contained, reduction gearheads.
Brakes (standard)	Mechanical parking brake.

HYDRAULIC SYSTEM

Main relief setting	2250 psi at 2200 rpm (15,5 mPa at 2200 r/min)
Lift cylinders (two)	2.5" dia. x 29.5" stroke, 1.5" rod double acting . . (63,5 mm dia. x 749 mm stroke, 38,1 mm rod)
Bucket cylinders (two)	2.5" dia. x 21.25" stroke, 1.25" rod double acting . . (63,5 mm dia. x 539,8 mm stroke, 31,8 mm rod)
Pump capacity	16.8 gpm @ 2200 rpm @ 2250 psi (63,6 liters/min @ 2200 r/min @ 15,5 mPa)
Capacity-total system	15.5 U.S. gallons (58,7 liters)

LOADER OPERATIONAL DATA

Tipping Load - (SAE rated)	
gasoline engine	2920 lbs (1324 kg)
diesel engine	3120 lbs (1415 kg)
Lift capacity to maximum height	
gasoline engine	2920 lbs (1324 kg)
diesel engine	3120 lbs (1415 kg)
Rated lift capacity-	
Mfr. rating	1700 lbs (771 kg)
Raising time with rated load in the bucket	4.5 sec.
Lowering time bucket empty	4.0 sec.
Rollback time from full dump to full rollback	1.7 sec.
Breakout force	
lift cylinders	3250 lbs (1474 kg)
tilt cylinders	4880 lbs (2213 kg)
Travel speed	
forward and reverse	6.2 mph (10,0 km/h)

WEIGHTS

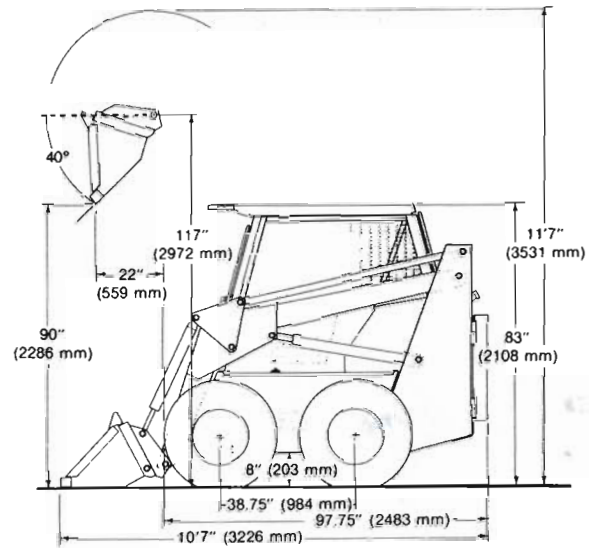
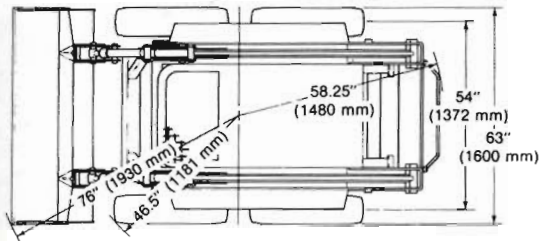
Shipping	
Gasoline	5330 lbs (2417 kg)
Diesel	5470 lbs (2481 kg)
Includes full fuel, no operator, no bucket with 7.50 x 16 tires, ROPS and standard equipment.	
Operating	
Gasoline	5825 lbs (2642 kg)
Diesel	5965 lbs (2706 kg)
Includes full fuel, 175 lb (79 kg) operator, 63" (1600 mm) dirt bucket, 7.50 x 16 tires, ROPS and standard equipment.	

STANDARD EQUIPMENT (on basic unit)

Loader with 1700 lb lift capacity and double acting cylinders. Case built, water-cooled 45 hp gasoline or diesel engine. Key switch with push button type starting and battery ignition. Hydrostatic transmission with chain drive to all wheels. Hydraulic oil filter with replaceable element and condition indicator. Hydrostatic charge filter with replaceable element and condition indicator light. Hydrostatic transmission temperature gauge and indicator light. Operator's compartment heat shield. Independent steering controls. 7.50 x 16 Steel Cap Chevron tires. Tool tach. 35 Amp alternator. 12 Volt battery. Dry type air cleaner. Muffler. Fuel filter. Hand throttle. Hand choke. Mechanical parking brake. Adjustment seat. Seat belt. ROPS. Ammeter. Hourmeter. Water temperature gauge. Oil pressure gauge. Charge pressure light. Low fuel light.



OPERATING DIMENSIONS



NOTE Specifications taken with full fuel, 175 lb (79 kg) operator, 63" (1600 mm) dirt bucket, 7.50 x 16 tires, 6 PR, ROPS and standard equipment unless otherwise specified.

Type	Width		Struck Capacities		SAE Heaped Capacities		Weight		Dump Height		Dump Reach		Dump Angle	Overall Length	
	Inch	mm	cu. ft.	m ³	cu. ft.	m ³	Lbs	kg	Inch	mm	Inch	mm		0	Inch
Dirt	63	1600	9.1	0,26	11.9	0,34	319	145	90	2286	22	559	40	127	3226
Dirt	73	1854	10.6	0,30	13.9	0,39	372	169	90	2286	22	559	40	127	3226
Utility	63	1600	15.6	0,44	19.5	0,55	430	195	86.8	2205	28	711	35	133.4	3388
Utility	73	1854	18.1	0,51	22.8	0,64	505	229	86.8	2205	28	711	35	133.4	3388
Fertilizer & Grain	63	1600	20.3	0,58	24.7	0,70	510	231	85.4	2169	37	940	30	140	3556
Stockyard	80	2032	21.2	0,60	25.0	0,71	590	268	86.5	2197	27.4	696	35	133	3378
Snow & Litter	80	2032	25.4	0,72	32.2	0,91	620	280	82.3	2090	27.9	709	40	136	3454

MANURE FORK:

- Number of tines 13
- Width between each tine 4" (102 mm)
- Overall width of tines 62.4" (1585 mm)
- Overall width of attachment 63.25" (1607 mm)
- Length of tine 30" (762 mm)
- Dump angle - maximum loader height 46°
- Overall machine length
fork at ground level 130.38" (3312 mm)
- Dump height - loader at maximum height 87" (2210 mm)
- Dump reach - maximum height 19.5" (495 mm)
- Weight of manure fork 430 lbs (195 kg)

HYDRAULIC GRAPPLE:

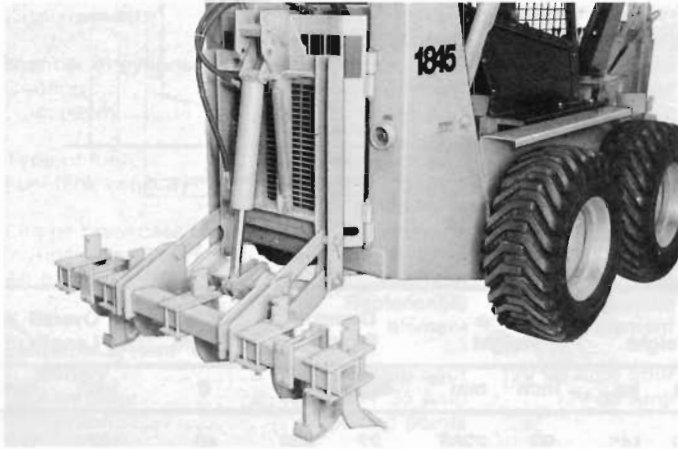
- Height of opening with cylinders
fully retracted 47" (1194 mm)
- Weight of grapple without manure fork 310 lbs (141 kg)



SCARIFIER:

- *Angle of departure (maximum) 20°
- Digging depth
 - teeth in upper position 4.5" (114 mm)
 - teeth in lower position 7.5" (191 mm)
- Ground clearance, fully raised,
 - teeth in upper position 13.75" (349 mm)
- Length when raised
 - (from centerline of rear axle) 56" (1422 mm)
- Weight of scarifier assembly 490 lbs (222 kg)

*Scarifier fully raised, teeth upside down, depth shoes raised.



OPTIONAL EQUIPMENT (on basic machine)

12.00 x 16.5 lug type flotation tires. 6.50 x 16 non-pneumatic Bearcat tires. Counterweights. Auxiliary hydraulics. Cold start kit (diesel). Belly pan. Swinging drawbar. Bucket level indicator. Spark arrest muffler. Rigid drawbar. Lights. Horn, ROPS enclosure.

OPTIONAL EQUIPMENT (attachments)

63" (1600 mm) and 73" (1854 mm) dirt buckets. 63" (1600 mm) and 73" (1854 mm) utility buckets. 63" (1600 mm) fertilizer and grain bucket. 80" (2032 mm) snow and litter bucket. 80" (2032 mm) stockyard bucket. D100 backhoe. D130 backhoe. Rear tool bar. Teeth for tool bar. Manure fork. Hydraulic grapple. Pallet fork. Brickguard.

NOTE: All specifications are stated in accordance with ICED Definitions or SAE Standards or Recommended Practices, where applicable.

Important

J I Case Company reserves the right to change these specifications without notice and without incurring any obligation relating to such changes.

PALLET FORK:

- Maximum width of forks 40" (1016 mm)
- Minimum width of forks 12" (305 mm)
- Length of fork 37.2" (945 mm)
- Overall width of attachment 50" (1270 mm)
- Overall machine length
 - forks on ground 141" (3581 mm)
- Lifting height - maximum 111.25" (2826 mm)
- Weight of pallet fork 375 lbs (170 kg)

Brick Guard:

- Height
 - top of lifting surface to top of guard 45.38" (1153 mm)
 - maximum with pallet fork fully raised 156.75" (3981 mm)
- Weight of brick guard 80 lbs (36 kg)

