

CASE

40XT/60XT/70XT/75XT
SKID STEERS



XT Skid Steers

eXTreme Machines

When facing challenging conditions on the job, trust a Case XT Series skid steer to rise to the occasion. Compact in size but big on power, new XT Series skid steers are at home both indoors and out — from agricultural and landscape operations to residential construction sites or road and bridge projects.

eXtra Power. Put the industry's most powerful skid steers to work for you. With an efficient Case power plant delivering up to 85 horsepower, one of these new XT skid steers is sure to match up perfectly with the demands of your next job.

eXTreme Productivity. High-capacity hydraulics, outstanding breakout force and amazing attachment versatility help boost your productivity. Choose from four models with rated operating loads ranging from 1,500 lb (681 kg) up to 2,200 lb (998 kg).

eXtraordinary Performance. Sized for superior performance on crowded job sites, an XT skid steer brings the maneuverability of a compact machine to the task. Best of all, the new XT skid steers are built tough enough to take the punishment of heavy lifting, handling, digging or whatever the job demands.

XT stands for eXtra power, eXTreme productivity, eXtraordinary performance and eXtra tool versatility. That makes for a family of truly eXTreme machines! Take your operation to the eXTreme today. Ask your Case dealer how to experience an XT skid steer on your next job.



40XT

Gross Horsepower
60 (44.7 kW)
Operating Load
1,500 lb (681 kg)



60XT

Gross Horsepower
75 (55.9 kW)
Operating Load
1,800 lb (817 kg)



Table of Contents

| | |
|-----------------------------------|-------|
| Engine/Powertrain..... | 4-5 |
| Operator Environment | 6-7 |
| Loader Arm Design..... | 8-9 |
| Compact Size..... | 10-11 |
| User-Friendly Operation | 12-13 |
| Powerful Productivity | 14-15 |
| 75XT | 16-17 |
| Ease of Maintenance..... | 18-19 |
| Customer Support | 20-21 |
| Attachments | 22-23 |
| Options and Upgrades..... | 24 |
| Customer-Driven Design | 25 |
| Standard/Optional Equipment | 26 |



70XT

Gross Horsepower
85 (63.4 kW)
Operating Load
2,000 lb (908 kg)



75XT

Gross Horsepower
75 (55.9 kW)
Operating Load
2,200 lb (998 kg)

XT Series

Big on power for greater performance

What makes the Case XT skid steer line so dependable is the proven performance of the engine and powertrain. Well-matched to the machine's size and design, Case engines come with one of the best warranties in the business — 2 years/2000 hours.

An industry-proven power plant known for its efficiency and reliability, the Case 4-390 can be found at the heart of the 40XT, 60XT and 75XT. The 70XT

features the Case 4T-390, which is turbocharged for greater performance and reduced power loss at higher elevations.

Designed for long life, large-displacement engines from Case deliver more power all through the rpm range. For added reliability and easier repair, Case engines use up to 30% fewer parts than competitive designs.

ENGINE/ POWERTRAIN

QUICK FACTS

- ✓ Powerful, proven Case engines
- ✓ Excellent warranty support
- ✓ Optional automatic engine shutdown system
- ✓ Tandem hydrostatic drive pumps and motors
- ✓ Precise, responsive controls



An automatic engine shutdown option protects critical components from excessive temperature. The system monitors three critical functions — engine oil pressure, engine coolant temperature, and hydraulic oil temperature. A 99-hour memory feature tracks the number of warnings to help identify operating patterns, such as repeated restarts after shutdown.

Tandem hydrostatic drive pumps are coupled directly to the engine flywheel, delivering 100% of available engine power to

pumps and components. Proven hydrostatic motors efficiently transfer power through a durable final drive on to externally adjustable drive chains. Lubed-for-life axle housings with protective seal guards ensure long life and reliability.

The low-effort, excavator-style controls provide precise control, as well as reduce operator fatigue. For the ultimate in versatility, standard auxiliary hydraulics allow you to operate a number of other attachments. A locking lever for the foot pedal provides constant hydraulic flow for backhoe or trencher work.

Ask your Case dealer about the industry-proven power from an XT skid steer today.



Case 4T-390 Engine

- 4-cylinder diesel
- 239 in.³ (3.9 L) displacement
- 85 gross hp (63.4 kW) @ 2200 rpm



| | 40XT | 60XT | 70XT | 75XT |
|---------------------|--------------------------------------|--------------------------------------|--------------------------------------|--------------------------------------|
| MODEL | 4-390 | 4-390 | 4T-390 | 4-390 |
| CYLINDERS | 4 | 4 | 4 | 4 |
| GROSS HP | 60 (44.7 kW) @ 2000 rpm | 75 (55.9 kW) @ 2200 rpm | 85 (63.4 kW) @ 2200 rpm | 75 (55.9 kW) @ 2200 rpm |
| NET HP | 56 (42 kW) @ 2000 rpm | 69 (51 kW) @ 2200 rpm | 79 (59 kW) @ 2200 rpm | 69 (51 kW) @ 2200 rpm |
| DISPLACEMENT | 239 in. ³ (3.9 L) | 239 in. ³ (3.9 L) | 239 in. ³ (3.9 L) | 239 in. ³ (3.9 L) |
| MAX. TORQUE | 177 lb•ft (240 N•m) @ 1200 rpm | 193 lb•ft (262 N•m) @ 1200 rpm | 254 lb•ft (344 N•m) @ 1500 rpm | 193 lb•ft (262 N•m) @ 1200 rpm |

XT Series

OPERATOR ENVIRONMENT

QUICK FACTS

- ✓ Panoramic visibility
- ✓ Easy entry/exit
- ✓ Redesigned operator seat bar
- ✓ Exclusive swing-away controls
- ✓ Excavator-style control levers
- ✓ Water-shedding seat
- ✓ Comfortable cab enclosure

The place for higher productivity

Command Central. The Comfort Zone. That's what some customers call the outstanding operator environment of a Case XT skid steer. Have a seat and you'll quickly see why this space earns such rave reviews.

For one thing, an XT skid steer offers easy entry and exit, especially with the exclusive swing-away hand controls. Pull down the operator seat bar, fasten the seat belt and let your hands settle on the comfortable excavator-style controls.

Low-effort servo-assist controls help fight fatigue during long shifts. Push-button activation makes operation extra easy. A hand throttle is standard equipment; add the optional foot throttle for extra convenience.

A water-shedding seat is standard (suspension seat optional) and will prove comfortable during long days on the job. Plus, an optional heater ensures your comfort despite the weather outside.

Look out to the front and sides to see superior visibility to the bucket, tires and curb line. Even if you add the cab enclosure, a frameless front door keeps your line of sight wide open. For operator protection in certain applications, a Lexan® shatter-resistant door is also available. You can also opt for a rear or top window if you'd like. Front and rear halogen flood lights illuminate work sites at night.

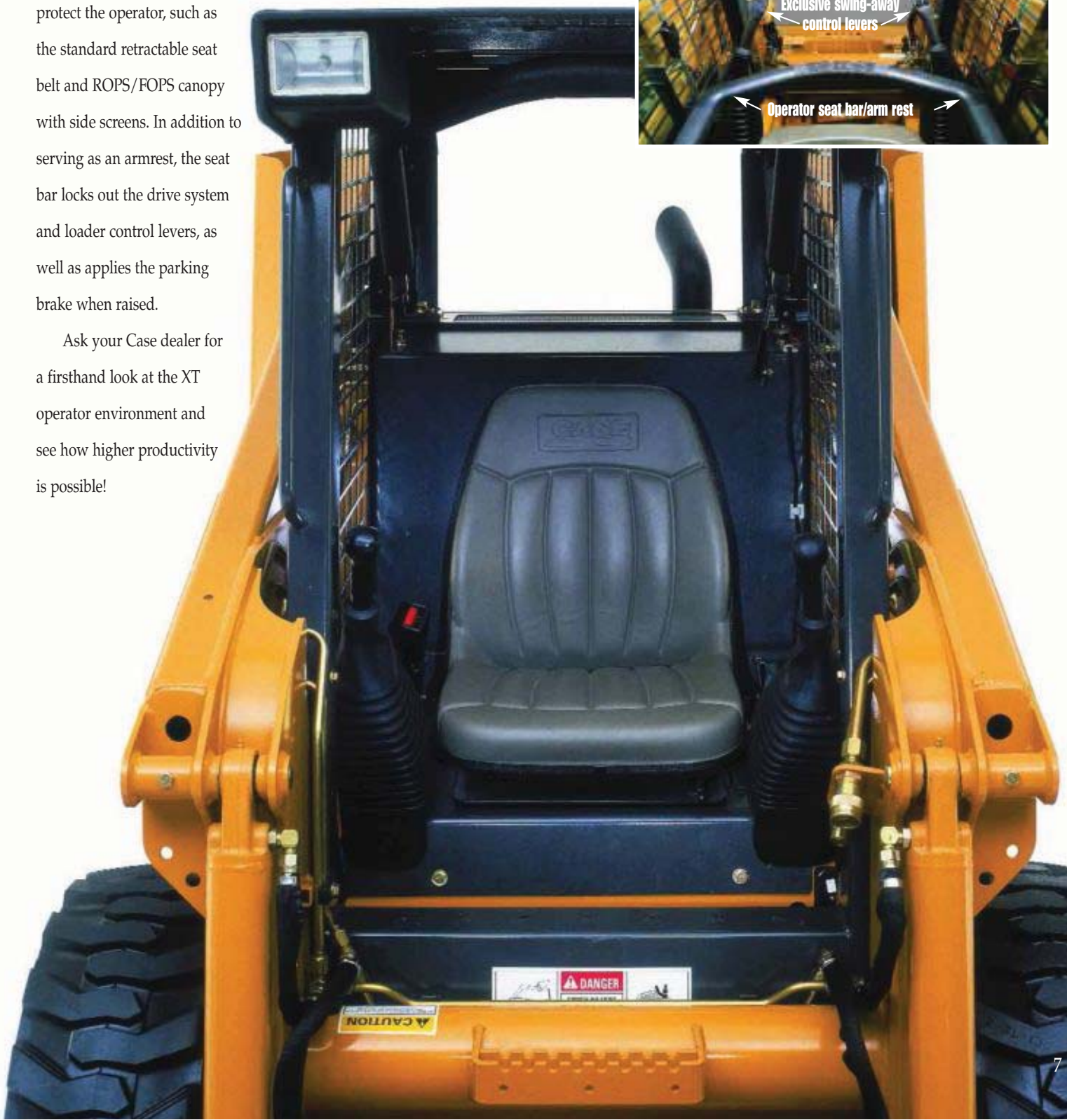
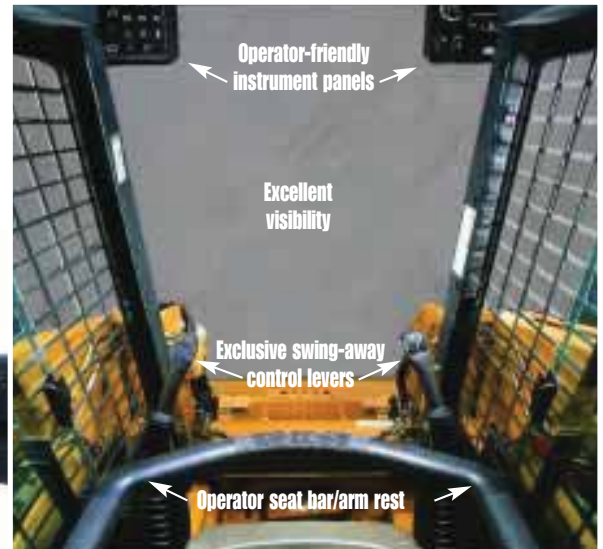
Operator-friendly instrument panels are in line with the operator's working view for quick reference to system functions. An optional automatic engine



shutdown system helps protect major machine components by shutting down the engine if temperatures or pressures exceed acceptable ranges.

Case XT skid steers are designed with features to protect the operator, such as the standard retractable seat belt and ROPS/FOPS canopy with side screens. In addition to serving as an armrest, the seat bar locks out the drive system and loader control levers, as well as applies the parking brake when raised.

Ask your Case dealer for a firsthand look at the XT operator environment and see how higher productivity is possible!



XT Series

LOADER ARM DESIGN

QUICK FACTS

- ✓ Compact Power conventional linkage
- ✓ Power Reach vertical-lift linkage

Compact Power Linkage

For excellent digging and material handling capability, the compact power conventional loader arm design is found on several models of the Case skid steer family, including the 40XT, 60XT and 70XT.

Brute strength and sturdy construction from the durable unitized chassis offer plenty of power and muscle to dig rock, make grade, or push piles. From snowplowing and sweeping to trenching and tree spade work, this linkage design is up to the challenge.

Plus, these models have excellent bucket hinge-pin height and forward reach, making them ideal for material-handling tasks like lifting, placing and dumping into trailers or trucks. Speedy cycle times help you keep up the pace of productivity.



Machines with compact power conventional linkage are well-rounded performers for a multitude of tasks and accept a variety of attachments to tackle almost any job.

To add an XT skid steer to your work force, visit with your local Case dealer about the flexible financing options available through Case Credit.



Power Reach Heavy-Lift Linkage

Designed with vertical, heavy-lift loader linkage, the 75XT offers an outstanding lift capacity of up to 2,200 lb (998 kg). Lift heavy pallets of brick or large bales, then easily load trailers or trucks.

The Power Reach design enables the 75XT to achieve maximum reach at a lower height, which allows for easier load placement on trailers. Plus, the 75XT maintains maximum reach all the way to full height, helping you unload into the middle of high-sided dump trucks. Competitive machines with scissors-lift designs cannot match the 75XT's unique combination of maximum reach throughout the lift cycle.

The durable 75XT defies the abusive twisting forces of heavy-duty digging. The patented Case 4-point linkage keeps the loader arms resting against the chassis when in the digging position, reducing stress for longer life.

For superior integrity, the 75XT features straddle-mounted pins and bushings to provide support and strength to the loader arms. Competitive models with cantilevered pins allow excessive bushing wear and side-to-side play, causing stress that leads to wear fatigue.

In addition to providing excellent durability for digging, the Case design also extends life in



heavy-duty tasks like using tree spades and cold planers.

Your local Case dealer can demonstrate the advantages of vertical-lift loader linkage. Ask about the full range of aftersales support available, including financing, warranties, parts and service.



XT Series

Convenient compact size for added

To get the most work done in tight spaces, look to a Case XT skid steer. Designed with compact dimensions in all directions, an XT skid steer maximizes maneuverability in cramped quarters.

A low ROPS height lets you clear doorways and overhangs, while a narrow width enables you to get through 60-inch (152 cm) gates. Plus, the XT is built with shorter length for added mobility, yet with a longer wheelbase for stability and a smoother ride.

COMPACT SIZE

40XT QUICK FACTS

- ✓ Gross Horsepower
60 hp (44.7 kW)
- ✓ Operating Load
1,500 lb (681 kg)
- ✓ Bucket Breakout Force
4,273 lbf (19,007 N)
- ✓ Bucket Hinge Pin Height
114.6 in (2.91 m)
- ✓ Operating Weight
5,716 lb (2593 kg)

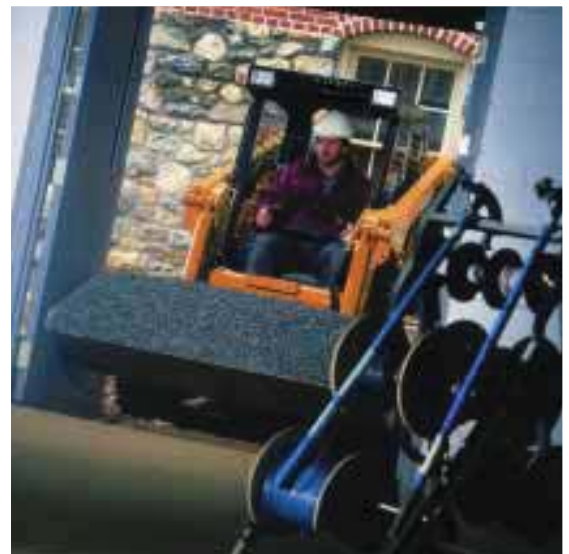


maneuverability

Now you can put more power onto smaller job sites because of the overall compact size of these skid steers. XT dimensions greatly improve maneuverability on jobs with tight boundaries.

To meet the challenge of working in confined spaces, equip the 60XT or 70XT with optional 10x16.5 Mighty Slim Jim tires for an extremely narrow width.

Ideal for indoor chores or crowded areas, an XT skid steer packs maximum power in a conveniently compact machine. Whether you're cleaning out stalls or landscaping a site, an XT skid steer offers you more machine — and more maneuverability.



The compact dimensions of an XT skid steer allow it to enter doorways other machines can't.



XT Series

USER-FRIENDLY OPERATION

60XT QUICK FACTS

- ✓Gross Horsepower
75 hp (55.9 kW)
- ✓Operating Load
1,800 lb (817 kg)
- ✓Bucket Breakout Force
5,061 lbf (22,481 N)
- ✓Bucket Hinge Pin Height
121.5 in (3.09 m)
- ✓Operating Weight
6,562 lb (2977 kg)

12

High-performance couldn't be more

As versatile as you need it to be, a Case XT skid steer is compatible with more than 75 attachments, adapting to each assignment with ease. From loading trucks to running a broom, backhoe or rake, an XT skid steer helps you do more duties in a day, boosting your productivity on the job.

Add the time-saving convenience of the hydraulic attachment quick coupler to swap out tools in seconds from your seat. Add even more value with optional auxiliary high-flow hydraulics that give you more power to use demanding attachments such as cold planers, augers and stump grinders.

Equip any XT skid steer with optional Ride Control to smooth out the ride and reduce material spillage over rough terrain.

Built tough enough to take on your most challenging work, an XT skid steer will outlast and outperform all others on the job site. As a durable digging machine, the XT skid steer is designed with a 4-point bucket support and dual bucket cylinders to provide strength to both sides of the bucket.



convenient

An operator-friendly environment with outstanding visibility enhances on-the-job productivity. Low-effort servo-assist controls reduce operator fatigue, while precision performance improves job satisfaction. You'll also appreciate the easy entry and exit of these machines with exclusive swing-away controls and the protective feeling of the seat bar.

Another way a Case XT skid steer boosts your productivity is by saving you time on maintenance with simpler serviceability. An easy-tilt ROPS and a swing-out cooler give you fast, easy access to all components. Daily checks can be done from a single location — no side panels to remove!

Already proven by their industry popularity, a Case skid steer is also backed by one of the industry's best warranties — one year unlimited hours.

Your Case dealer can show you the advantages of high-performance convenience with an XT skid steer. Rest assured, a Case skid steer is backed by an expert team of dealer sales, service, and support personnel who will see to it that your ownership experience is beyond your expectations.



No matter what the application — agricultural, industrial, landscaping, construction, or roads and bridges — an XT skid steer can handle it. With more than 75 available attachments and optional high-flow auxiliary hydraulics, a Case XT skid steer is up to the challenge of almost any chore. Put one to the test on your next project!

Add optional Ride Control to any XT skid steer for a smoother ride and less material spillage. Ride Control acts like a shock absorber by cushioning loader arms from the jolts of rough terrain.

XT Series

POWERFUL PRODUCTIVITY

70XT QUICK FACTS

- ✓ *Gross Horsepower*
85 hp (63.4 kW)
- ✓ *Operating Load*
2,000 lb (908 kg)
- ✓ *Bucket Breakout Force*
5,885 lbf (26,178 N)
- ✓ *Bucket Hinge Pin Height*
121.5 in (3.09 m)
- ✓ *Operating Weight*
6,906 lb (3133 kg)

Best-in-class power boosts productivity

When asked what they wanted most in a skid steer, customers around the world said “more power!” And extra horsepower is exactly what Case XT skid steers bring to the market!

For example, the turbocharged power plant in the 70XT skid steer boasts 85 gross hp (63.4 kW), giving you more than enough power to handle the most challenging jobs. Even the 40XT brings 60 gross hp (44.7 kW) to the job, topping the competition in its class. Case skid steers are all about compact power!

At the heart of every XT skid steer is the Case 4-390 engine backed by an industry-best 2-year/2000-hour warranty. Our large-displacement design provides maximum power at low engine rpm for longer life and dependable performance.

Its parent metal bore design adds strength and eliminates cavitation erosion and coolant leaks for optimal reliability. An integral oil cooler and coolant

pump offer enhanced efficiency, plus reduced repair costs. And with 30% fewer parts than competitive engines, the Case power plant simplifies repairs and delivers greater reliability.

Lift capacity is the other part of the power equation and Case XT skid steers don't disappoint. These machines give you the capability to lift larger loads and tackle more-challenging jobs. From 1,500 lb (681 kg) on the 40XT up to the 2,200 lb (998 kg) capacity of the 75XT, Case offers a skid steer that gives your operation greater productivity per day.

Your Case dealer can help you determine the XT skid steer that's best for your specific situation. Look to your local dealer for industry expertise, flexible financing solutions through Case Credit, and outstanding parts and service support after the sale.



ivity

At 85 gross hp (63.4 kW), the turbocharged Case 4T-390 engine in the 70XT gives you top-end power for higher performance and greater productivity.



XT Series

75XT

QUICK FACTS

- ✓ *Gross Horsepower*
75 hp (55.9 kW)
- ✓ *Operating Load*
2,200 lb (998 kg)
- ✓ *Bucket Breakout Force*
4,633 lbf (20,608 N)
- ✓ *Bucket Hinge Pin Height*
119.7 in (3.04 m)
- ✓ *Operating Weight*
6,700 lb (3039 kg)

Reaching new heights in skid steer

When lifting and loading are your primary tasks, the 75XT is the model made to make you more productive. Its heavy-lift capability lets you pick up larger loads and its power reach linkage lets you place loads on trailers easily and confidently.

What makes the 75XT so special is that the vertical-lift design achieves maximum reach at operator eye level. What's more, it sustains that reach to maximum height for superior truck loading. Stack large bales and lift pallets of brick or sod all day long with the highly efficient 75XT skid steer.

In addition to superior lift and reach characteristics, the patented 4-bar linkage keeps the loader arms against the chassis when in the digging position to help absorb shock loads for longer life.

Another Case exclusive is hydraulic two-way attachment self-leveling, which is optional on the 75XT for the ultimate in precision load control and placement. For easier emptying, a 45° dump angle helps clean out the bucket, even when handling sticky material.

To run a variety of attachments, the 75XT can be equipped with optional 3000 psi (207 bar) high-flow hydraulics with up to 40 gpm (155 L/min) flow. And to save valuable time swapping tools, the hydraulic attachment quick coupler option is well worth the investment.

No matter what your primary application — agricultural, landscaping, or construction, the 75XT is sure to become an instant favorite.



design



XT Series

EASE OF MAINTENANCE

QUICK FACTS

- ✓ Easy-Tilt ROPS
- ✓ Swing-out service door
- ✓ Simple daily servicing
- ✓ Easy engine access
- ✓ Optional auto engine shutdown system

Save time every day

For every minute you spend servicing, the machine isn't making you money on the job. That's why Case XT skid steers are designed for easy daily and routine maintenance checks that save you both time and money.

In fact, all XT Series skid steers offer the time-saving convenience of a single location for daily maintenance duties. Open the rear hood to reach the fuel fill, oil fills, engine oil dipstick and the air cleaner. Swing out the rear service door for instant access to check coolant or hydraulic oil levels.

It's also very easy to clean the cross-flow cooling system because of the swing-out service door that allows full access. Best of all, debris doesn't end up on top of the engine or battery compartment either.

All Case XT skid steers have a tilt-forward ROPS that provides quick, easy access. On the 75XT, the industry's only no-tools ROPS tilt offers full access to the engine and other major components in about 10 seconds. Simply unlatch the cab pivot lock handles next to the seat and pull the cab forward. This can be done with the loader arms in the raised or lowered position.



An easy-tilt ROPS gives you fast, open access to the engine and major hydrostatic components under the operator compartment.

For maximum reliability, the 60XT, 70XT and 75XT feature heavy-duty ASA #100 drive chains. These externally adjustable drive chains ensure proper operation, preventing premature repair. Direct coupled hydraulic pumps prevent power loss and costly belt replacement.

Extended air filter life is an excellent benefit of the standard dual element air cleaner system and optional air intake aspirator. Other

preventive maintenance points include a 6-micron hydraulic oil filter for added system protection. Most importantly, the optional automatic engine shutdown and 99-hour memory feature help protect the system against excessive temperature and pressures.

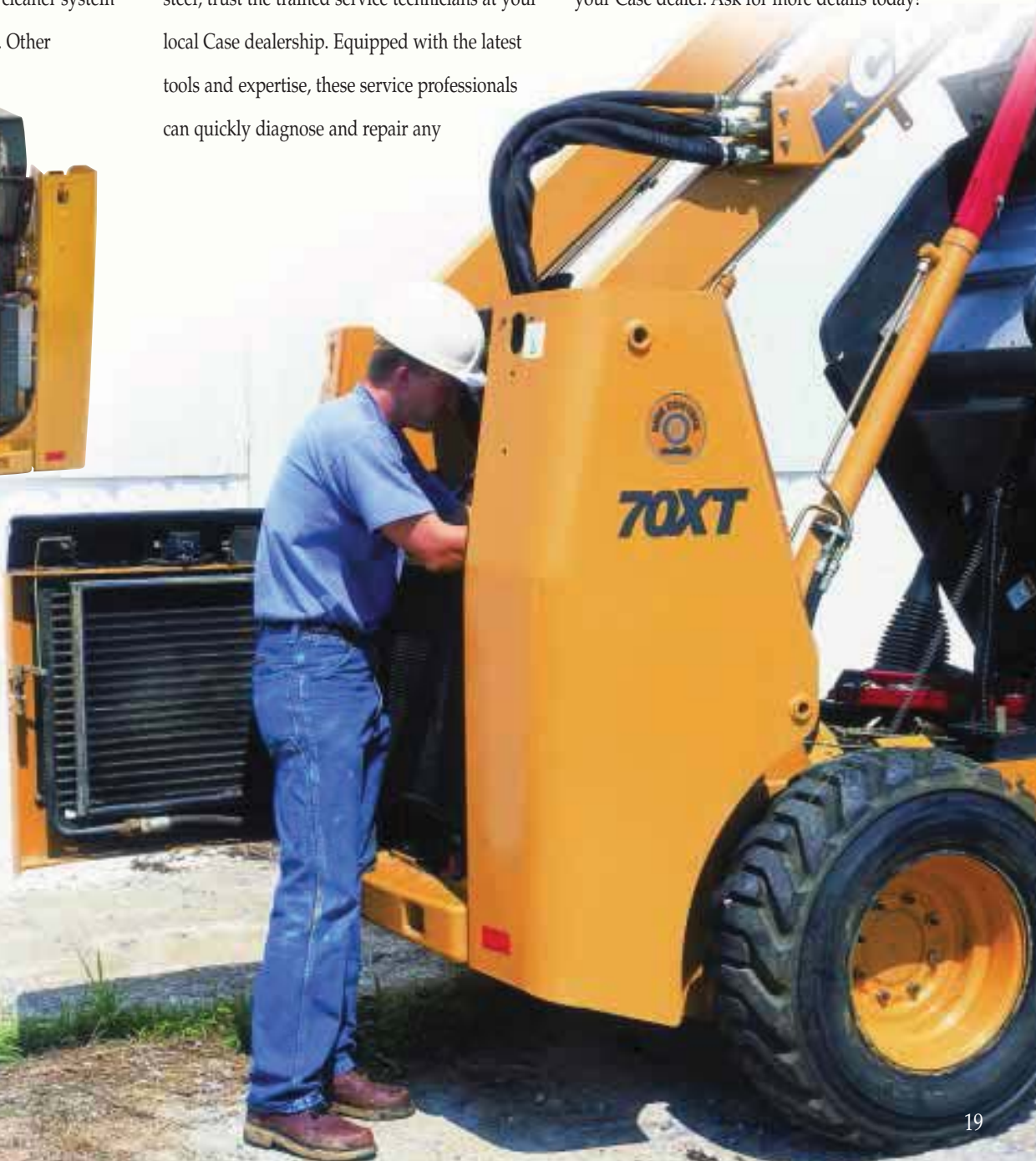
When it comes time to repair your XT skid steer, trust the trained service technicians at your local Case dealership. Equipped with the latest tools and expertise, these service professionals can quickly diagnose and repair any

problem on your machine. For all your service and maintenance needs, depend on genuine Case replacement parts to deliver reliable performance and longer life.

To protect your investment and boost resale values, choose the Flexible Protection Plan or Maintenance Inspection Plan available through your Case dealer. Ask for more details today!



Single-point daily servicing at the rear of the machine saves you time. Enjoy easy access to all checkpoints from under the lockable rear hood and behind the swing-out service door. No side panels to remove!



XT Series

CUSTOMER SUPPORT

QUICK FACTS

- ✓ Buy, Lease or Rent
- ✓ Custom Financing from Case Credit
- ✓ Outstanding Warranties
- ✓ Flexible Protection Plans
- ✓ Skilled Service Technicians
- ✓ AvailabilityMAX™ Parts Supply

Always Available With Answers

To put an XT skid steer to work on your next job, stop by your local Case dealer for the total support solution you need. From parts and service to flexible financing and protection plans, your Case dealer has the right tools to take care of your equipment and your business. Trust your Case dealer for industry-leading support and expert advice that will give you a productivity and profitability advantage.

CASE CREDIT®

Whether you want to rent, lease or own, your Case dealer offers custom financing packages through Case Credit that best suit your specific situation. Choose a flexible plan to match your budget with the machine your operation needs.



And for the peace of mind you deserve, Case skid steers come with the best warranty in the business. For added security and around-the-clock protection, you can choose a **Case Flexible Protection Plan** to customize the coverage for as long as you want to own the machine.

Choose powertrain or full machine coverage and the number of years and hours of protection. You can even include Flexible Protection in your equipment financing package for one easy monthly payment. Plus, you'll enjoy higher resale value when the time comes.

Once you get your new XT skid steer on the job, you'll want to make sure it keeps up the pace of profitability. To keep the machine well-tuned while it's in your fleet, consider the **Case Maintenance Inspection Plan** for regularly scheduled servicing that eliminates surprise repairs and ensures maximum uptime.

With Case-certified mechanics and genuine Case parts, you can be sure that repairs are done right the first time. **Skilled service professionals** equipped with the latest tools can quickly diagnose and repair your machine so you can get back on the job faster.

Your Case dealer also keeps high-demand **genuine Case replacement parts** on-hand to keep you up and running. If it's not on the shelf, your dealer can locate the nearest part within seconds and get it on the way to you in a matter of minutes thanks to the **AvailabilityMAX™** system.

Uptime. All the time.®

YOUR TEAM FOR SUPERIOR SUPPORT



XT Series

ATTACHMENTS

QUICK FACTS

- ✓ Variety of attachments
- ✓ Several bucket types
- ✓ Optional high-flow hydraulics
- ✓ Hydraulic attachment quick coupler

Multi-tasking machines for valuable

A skid steer must be a multi-purpose machine on most job sites. You may need to excavate in the morning and backfill that same afternoon. That's where a Case XT's versatility becomes very valuable.

Durable and designed to work well with a wide variety of attachments, the XT line can handle just about any assignment when equipped with everything from backhoes and brooms to augers, forks, rakes, stump grinders, cold planers and more.

Case XT skid steers come with auxiliary hydraulics for low-flow attachments as standard equipment. For high-powered tasks, go with an optional 3000 psi (207 bar) high-flow hydraulic system with flows up to 40 gpm (155 L/min).

ISO hydraulic couplers offer expanded compatibility with more industry-accepted attachments. Change tools in a matter of seconds with the hydraulic attachment coupler — do it safely and simply right from the operator seat.

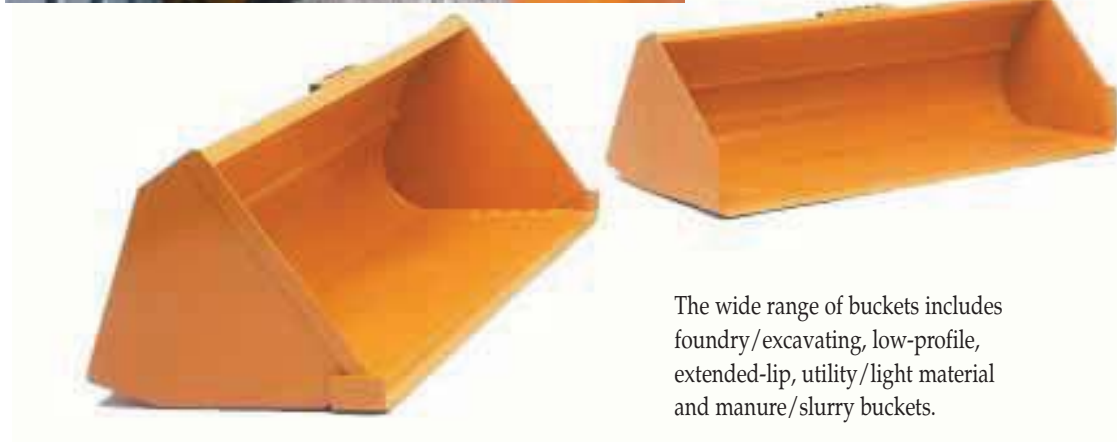
Match a highly versatile XT skid steer to almost any application, including residential construction, roads and bridges, landscaping, scrap handling, demolition, agricultural and industrial.

Your local Case dealer has the right solutions for your specific situation. Stop by today to see the exceptional value and true versatility of an XT skid steer.

Hydraulic coupler



An optional hydraulic attachment quick coupler makes switching tools fast and simple without leaving the operator compartment.



The wide range of buckets includes foundry/excavating, low-profile, extended-lip, utility/light material and manure/slurry buckets.

versatility

Augers



Forks



Bale Spikes



Cold Planers



Auto Rakes



Grader Rakes



Angle Brooms



Pick-up Brooms



Manure Grapples



Scrap Grapple Buckets



Stump Grinders



Backhoes



Buckets



4-in-1® Buckets



XT Series

OPTIONS AND UPGRADES

QUICK FACTS

- ✓ Two-way hydraulic self-leveling
- ✓ Ride Control
- ✓ Auto engine shutdown
- ✓ Catalytic muffler
- ✓ Deluxe heater
- ✓ Tires and tracks

Making the Best Better

The Case XT family of skid steers offers industry-leading power in a conveniently compact package.

In addition to extra horsepower in smaller-sized machines, there are plenty of new features and options too — from an accessory power outlet and water-shedding seat to critical components that impact your productivity, such as high-flow auxiliary hydraulics, Ride Control and two-way hydraulic self-leveling.

Or choose the options that add convenience and comfort, such as the cab enclosure, deluxe heater, foot throttle and hydraulic attachment quick-coupler. If you plan to do a lot of indoor work, the catalytic muffler option is a good way to reduce emissions.

Case offers a wide variety of optional tires or steel tracks for optimal performance in any application.

For example, choose Mighty Slim Jim 10x16.5 tires for compact convenience or steel tracks for better traction in soft conditions.

With a long list of factory- and field-installed options, you can turn a Case XT skid steer into your ideal machine. Equip it just the way you prefer to run it. Match it to your needs for special situations. Outfit it with whatever it takes to help you do more in a day. Ask your Case dealer about all the available options for the XT skid steer line.



More of What You Want

When asked what was most important in a skid steer, customers around the world requested a number of key criteria that Case engineers designed into the expanded family of XT skid steers.

For starters, you asked for more power in a smaller size. You'll find that Case skid steers offer high performance in compact dimensions for greater productivity and maneuverability.

You wanted greater digging power, more lift capacity and better reach. Both our conventional compact power linkage and vertical-lift designs deliver on demand.

You said you needed a machine that could take on almost any application. With standard auxiliary flow and optional high-flow hydraulics, Case XT skid

steers can handle cold planers, hammers, rockwheels and tree spades as well as it can manage a broom, blade or mower.

You also asked for a machine that was built to last — one that works hard for you every day. Put an XT skid steer on your next job and have confidence in its proven design and reliable components.

And you had to have a machine that's not only easy to operate, but also easy to service. You'll quickly discover Case XT skid steers simplify both.

To see all these things for yourself, stop by your local Case dealership and ask for a demonstration of an XT Series skid steer.



XT Series

CUSTOMER-DRIVEN DESIGN

QUICK FACTS

- ✓ Outstanding power
- ✓ Compact convenience
- ✓ Rugged and reliable
- ✓ Easy maintenance
- ✓ Low cost of ownership

XT Series

STANDARD/OPTIONAL EQUIPMENT

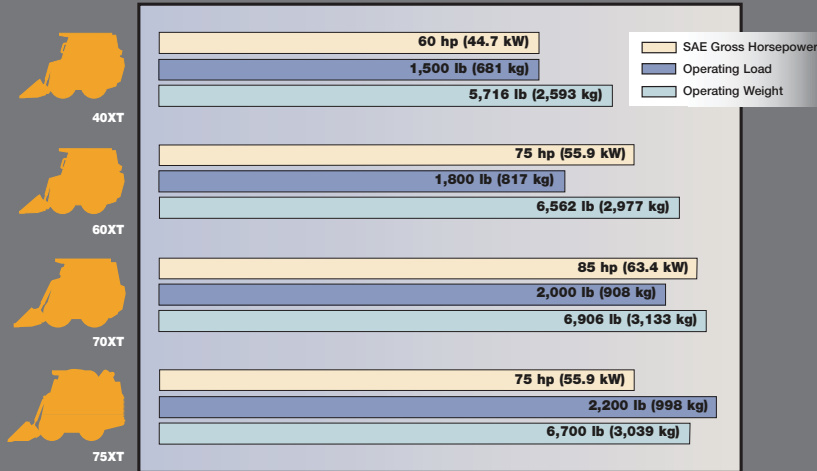
Standard

| | 40XT | 60XT | 70XT | 75XT |
|---|------|------|------|------|
| Engine | | | | |
| Case 4-390 diesel | • | • | • | • |
| Case 4T-390 turbocharged diesel | • | • | • | • |
| Automatic fan belt tensioner | • | • | • | • |
| Integral engine oil cooling | • | • | • | • |
| Fuel filter w/water trap | • | • | • | • |
| Dual element air cleaner | • | • | • | • |
| 65 amp alternator | • | • | • | • |
| 610 CCA 12-volt battery | • | • | • | • |
| Heavy-duty radiator | • | • | • | • |
| Operator's Compartment | | | | |
| ROPS/FOPS canopy w/side screens | • | • | • | • |
| "No-tools" tilt ROPS/FOPS | • | • | • | • |
| Instrument panels | • | • | • | • |
| Vinyl seat | • | • | • | • |
| 2 in. (51 mm) retractable seat belt | • | • | • | • |
| Hand throttle | • | • | • | • |
| Foot throttle | • | • | • | • |
| Ergonomic hand controls | • | • | • | • |
| Lap bar w/integral arm rests | • | • | • | • |
| Loader control lockout system | • | • | • | • |
| Fingertip brake control | • | • | • | • |
| Rear window w/escape provision | • | • | • | • |
| Floor cleanout panel | • | • | • | • |
| Powertrain | | | | |
| Hydrostatic four-wheel drive | • | • | • | • |
| Servo controls | • | • | • | • |
| ASA #80 drive chain | • | • | • | • |
| ASA #100 drive chain | • | • | • | • |
| Pin lock parking brakes | • | • | • | • |
| Hydraulics | | | | |
| Auxiliary hydraulics 3000 psi (207 bar) | • | • | • | • |
| - 19.1 gpm (72.2 L/min) | • | • | • | • |
| - 21.0 gpm (79.4 L/min) | • | • | • | • |
| Auxiliary hydraulic circuit pedal lock | • | • | • | • |
| Loader arm-mounted flat-face couplers | • | • | • | • |
| Loader function lockout system | • | • | • | • |
| Loader lockout override | • | • | • | • |
| 2-spool loader control valve | • | • | • | • |
| 3-spool loader control valve | • | • | • | • |
| Swing-out hydraulic oil cooler | • | • | • | • |
| Loader arm float position | • | • | • | • |
| Loader | | | | |
| Conventional lift linkage | • | • | • | • |
| Heavy lift/power reach linkage | • | • | • | • |
| Mechanical attachment coupler | • | • | • | • |
| Other | | | | |
| Lockable service access hood | • | • | • | • |
| Single-point daily servicing | • | • | • | • |
| Halogen lights: 2-front, 1-rear | • | • | • | • |
| Rear tail lights | • | • | • | • |

Optional

| | 40XT | 60XT | 70XT | 75XT |
|---|------|------|------|------|
| Engine | | | | |
| Coolant block heater | • | • | • | • |
| Thermostart | • | • | • | • |
| Loader | | | | |
| Ride Control | • | • | • | • |
| Hydraulic attachment coupler | • | • | • | • |
| Hydraulic two-way self-leveling | • | • | • | • |
| Hydraulics | | | | |
| High-flow auxiliary hydraulics – 3000 psi (207 bar) | • | • | • | • |
| Operator's Compartment | | | | |
| Vinyl suspension seat w/2 in. (51 mm) retractable seat belt | • | • | • | • |
| Vinyl suspension seat w/3 in. (76 mm) retractable seat belt | • | • | • | • |
| Auxiliary front electric controls | • | • | • | • |
| Chassis options harness | • | • | • | • |
| Lexan® front door | • | • | • | • |
| Glass front door w/wiper & washer | • | • | • | • |
| Sliding side windows | • | • | • | • |
| Rear window | • | • | • | • |
| Top window | • | • | • | • |
| Heater (deluxe) | • | • | • | • |
| Heater (foot) | • | • | • | • |
| Foot throttle | • | • | • | • |
| Accessory power outlet | • | • | • | • |
| Other | | | | |
| Backup alarm | • | • | • | • |
| Rotating beacon | • | • | • | • |
| Lift hooks | • | • | • | • |
| Drawbar | • | • | • | • |
| 260 lb (118 kg) counterweight | • | • | • | • |
| Horn | • | • | • | • |
| Special paint | • | • | • | • |
| Language decals | • | • | • | • |
| Manual brake release | • | • | • | • |
| Locking fuel cap | • | • | • | • |
| Auxiliary front electric | • | • | • | • |
| Remote jump start | • | • | • | • |
| Battery disconnect switch | • | • | • | • |
| Automatic engine shutdown system | • | • | • | • |
| Buckets/Attachments | | | | |
| Foundry/excavating | • | • | • | • |
| Low profile | • | • | • | • |
| Low profile extended | • | • | • | • |
| Utility/light material | • | • | • | • |
| Manure/slurry | • | • | • | • |
| Bolt-on bucket cutting edges | • | • | • | • |
| Bolt-on spill guards | • | • | • | • |
| Pallet forks – 42 in. (1.07 m) and 48 in. (1.22 m) | • | • | • | • |
| Model D100XR backhoe | • | • | • | • |
| Model D125XR backhoe | • | • | • | • |
| Tires/Tracks | | | | |
| Solideal Hauler SKS | • | • | • | • |
| Galaxy Mighty Slim Jim | • | • | • | • |
| Galaxy Beefy Baby | • | • | • | • |
| Galaxy Hippo | • | • | • | • |
| Galaxy King Kong | • | • | • | • |
| Galaxy Hulk | • | • | • | • |
| Galaxy Bulky Hulk | • | • | • | • |
| Case Steel Tracks | • | • | • | • |





Uptime. All the time.®

NOTE: All specifications are stated in accordance with SAE Standards or Recommended Practices, where applicable.

IMPORTANT: Case Corporation reserves the right to change these specifications without notice and without incurring any obligation relating to such change. This literature has been published for worldwide circulation. Availability of some models and equipment builds vary according to the country in which the equipment is used. The illustrations and text may include optional equipment and accessories and may not include all standard equipment. Your Case dealer/distributor will be able to give you details of the products and their specifications available in your area.

Attachments from other manufacturers are shown for illustration only. Case Corporation does not warrant the safety or reliability of these attachments.

Lexan is a registered trademark of the General Electric Co.

Galaxy, Beefy Baby, Hippo and Mighty Slim Jim are trademarks of the Galaxy Tire Co.

© 2001 CASE CORPORATION. All Rights Reserved.
Case and Case Credit are registered trademarks of Case Corporation.

Visit Case Corporation on the Web at: <http://www.casece.com>

Form No. CE 312-08-01
Replaces Form No. None

Printed in U.S.A.

WORLDWIDE CASE CONSTRUCTION EQUIPMENT CONTACT INFORMATION

NORTH AMERICA/MEXICO:
700 STATE STREET
RACINE, WI 53404 U.S.A.

LATIN AMERICA:
AV. GENERAL DAVID SARNOFF 2237
32210 - 900 CONTAGEM - MG
BELO HORIZONTE BRAZIL

EUROPE/AFRICA/MIDDLE EAST:
18, PLACE DES NYMPHEAS
ZI PARIS NORD 11 95915
ROISSY CDG CEDEX FRANCE

ASIA PACIFIC:
31-67 KURRAJONG ROAD
ST. MARY'S
NEW SOUTH WALES 2760 AUSTRALIA



Always read the Operator's Manual before operating any equipment. Inspect equipment before using it, and be sure it is operating properly. Follow the product safety signs and use all safety features provided.