



W26B LOADER



165 FLYWHEEL HORSEPOWER

Case diesel engine

FULL POWERSHIFT TRANSMISSION

Three speeds forward, Three reverse

SINGLE LEVER SHIFT CONTROL

Fast, easy speed and directional changes

HYDRAULIC LIFT CAPACITY

29,300 lbs (13290 kg)

IN-LINE-PLANE LOADER LINKAGE

Excellent view of bucket work area

LONG WHEEL BASE

Good operational stability

CENTER-PIVOT STEER

Allows rear and front tires to track at all times

Unit shown is equipped with non-standard items.

Manufactured by J I Case Company, Racine Wisconsin USA

J I Case
A Tenneco Company



LOADER SPECIFICATIONS

ENGINE

Make and model	Case A504BDT
Fuel	diesel
Horsepower	
(1) Maximum rated gross	180 @ 2200 rpm
(2) SAE net	165 @ 2200 rpm
Torque, maximum	
At 500' (152 m) altitude, 85° F (29° C)	472 lbs/ft @ 1600 rpm (65,23 kg/m @ 1600 tr/mn)

Cylinders, number (valve-in-head)	6
Bore and stroke	4 5/8" x 5" (117 mm x 127 mm)
Displacement	504 cu/in (8,21 lit)
Starting	24 volt electric
Air cleaner (with service indicator)	two element, dry type
Oil filter	full-flow type

(1) Manufacturer's rating of maximum engine horsepower at flywheel when equipped with oil and water pumps. Fuel set at maximum quantity for this application. Corrected to sea level 29.92" (760 mm) Hg and 60° F (15° C) dry air.

(2) SAE net flywheel horsepower of engine as applied to this vehicle when equipped with operating accessories including oil and water pumps, alternator, air cleaner, fan and muffler. Corrected to 500' (152 m) altitude with .38" (9.5 mm) Hg vapor pressure, 29.38" (746 mm) Hg observed barometer and 85° F (29° C) per SAE J816 specifications.

TRAVEL SPEEDS

	1st		2nd		3rd	
	mph	(km/h)	mph	(km/h)	mph	(km/h)
Forward	4.3	(6,9)	12.4	(19,9)	29.9	(48,1)
Reverse	4.4	(7,1)	12.8	(20,6)	30.8	(49,5)

TRANSMISSION

Three speeds forward, three speeds reverse, powershift. Single lever control.

TORQUE CONVERTER

Single stage integral with transmission. 3.1 to 1 stall ratio.

AXLES (front and rear)

Front axle fixed. Rear axle oscillates up or down 11 1/2°. 23° total oscillation. One wheel can drop 17" (432 mm) with all wheels remaining on the ground for maximum traction. Axle shafts may be removed without disturbing the wheels or planetaries.

DIFFERENTIALS

Torque proportioning differentials, front and rear for maximum traction.

BRAKES

Air over hydraulic, internal-expanding, 4-wheel. Dual braking system, front brakes independent of rear brakes from master cylinder to brake. Over center type parking brake on drive shaft.

STEERING

Center pivot articulated design with double acting steering cylinders. Front and rear wheels always track.

Steering angle-each direction from center ...	40°
Steering pump	45.5 gpm @ 2200 rpm @ 2150 psi (171 lit/min @ 2200 tr/mn @ 151 kg/cm ²)
Steering cylinders (2) ...	3 1/2" dia. x 21 5/16" stroke, 2" rod (89 mm dia. x 541 mm stroke, 51 mm rod)

LOADER HYDRAULIC SYSTEM

Cylinders: Double-acting with hardened and chrome-plated rods to increase strength and resist corrosion.

Lift (2)	6" dia. x 34 7/8" stroke, 3" rod (152 mm dia. x 886 mm stroke, 76 mm rod)
----------------	---

Bucket (2) ...	5" dia. x 31 1/2" stroke, 2 1/2" rod (127 mm dia. x 800 mm stroke, 64 mm rod)
----------------	---

Pump: Dual-stage, gear-type, converter-driven. 73 gpm @ 2200 rpm @ 2150 psi (276 lit/min @ 2200 tr/mn @ 151 kg/cm²).

Control valve: Open-center, series parallel circuit.

Hydraulic lines: Steel tubing with soldered fittings and wire-braid, high-pressure hose with swaged fittings.

Reservoir: Positive pressurized, inlet filtered hydraulic oil system sealed for dirt exclusion. Full time micronic filter furnishes only clean oil to all components of the hydraulic system.

Hydraulic cycle time:

	Seconds
Rated load in bucket	
Raise	6.5
Lower	4.1
Dump	2.1
Total	12.7

SERVICE CAPACITIES

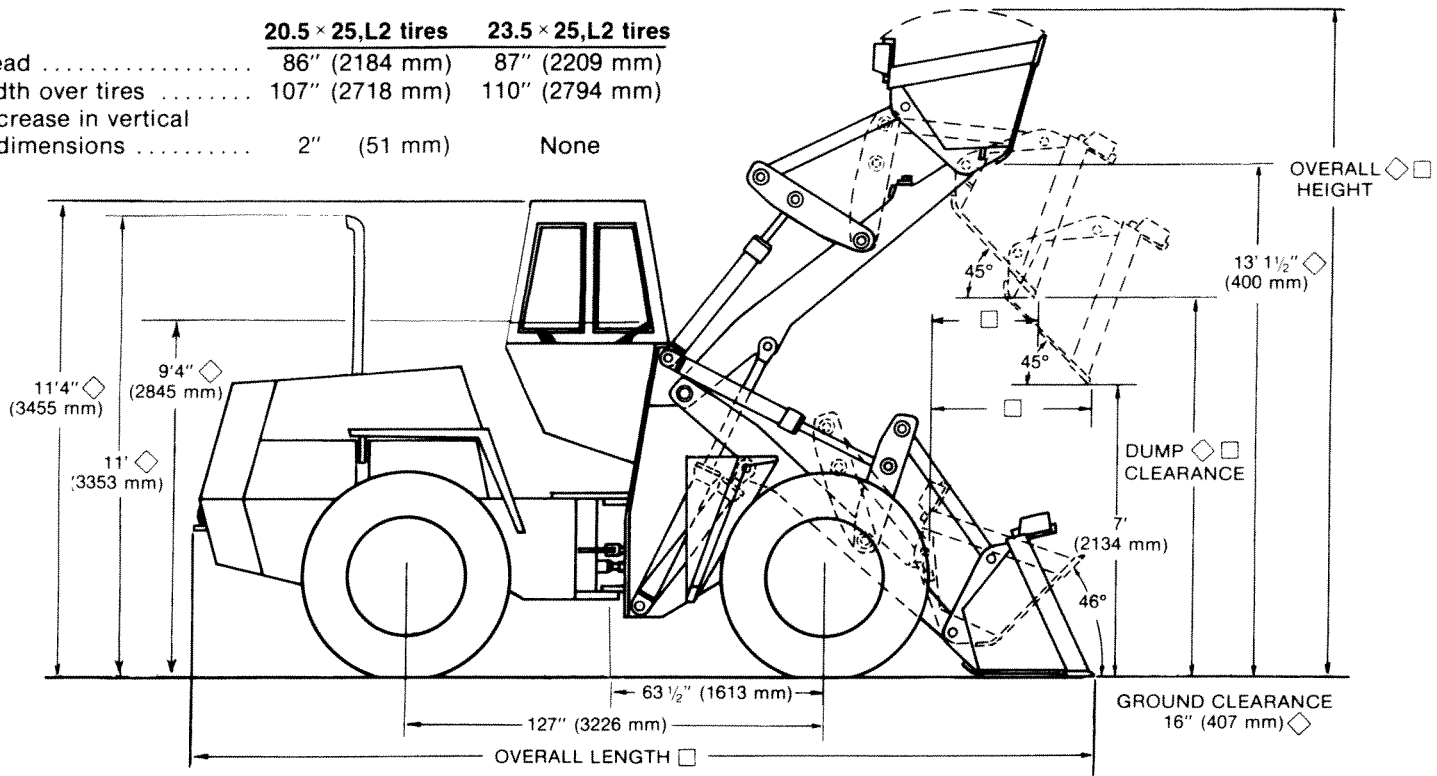
	U.S. gallons	(liters)
Fuel tank	82.0	(310)
Hydraulic system	31.0	(117)
Transmission and torque converter	5.5	(21)
Engine crankcase	3.25	(12)
Differentials and final drives		
Front	5.25	(20)
Rear	5.0	(19)
Cooling system	10.0	(38)

NOTE: Specifications herein are in accordance with all Society of Automotive Engineers' standards (SAE). The applicable Loader Standard is SAE J732C and is denoted by §.

OPERATING DIMENSIONS

◇ Varies with tire size
 □ Varies with bucket size, refer to performance specifications.

	20.5 × 25, L2 tires	23.5 × 25, L2 tires
Tread	86" (2184 mm)	87" (2209 mm)
Width over tires	107" (2718 mm)	110" (2794 mm)
Decrease in vertical dimensions	2" (51 mm)	None



PERFORMANCE SPECIFICATIONS §

BUCKET TYPE - Capacity SAE Rated (nominally heaped) §	EXCAVATING 2½ Cu/Yds (1,9 m³)	GENERAL PURPOSE 3 Cu/Yds (2,29 m³)	3½ Cu/Yds (2,68 m³)	LIGHT MATERIAL 4 Cu/Yds (3,1 m³)	LIGHT MATERIAL 5 Cu/Yds (3,82 m³)	4-IN-1 3 Cu/Yds (2,29 m³)
Dump Clearance @ 45° Dump - Full Height § ◇	10' 1" (3073 mm)	9' 11" (3023 mm)	9' 11" (3023 mm)	9' 6" (2896 mm)	9' 3" (2819 mm)	9' 7" (2921 mm)
Bucket Reach @ Full Height & Dump §	3' ½" (927 mm)	3' 2½" (978 mm)	3' 2½" (978 mm)	3' 7½" (1105 mm)	4' ½" (1232 mm)	3' 7" (1092 mm)
Bucket Reach @ 7' Clearance Dump §	4' 8" (1422 mm)	4' 10" (1473 mm)	4' 10" (1473 mm)	5' 3½" (1613 mm)	5' 6½" (1689 mm)	5' 3" (1600 mm)
Loader Clearance Circle - Bucket in Carry Position §	39' 6" (12040 mm)	40' 11" (12470 mm)	40' 11" (12470 mm)	40' 11" (12470 mm)	42' (12802 mm)	41' 2" (12548 mm)
Overall Length §	24' 2" (7366 mm)	24' 8" (7518 mm)	24' 8" (7518 mm)	25' 4" (7722 mm)	25' 10" (7874 mm)	25' (7620 mm)
Overall Height § ◇	16' 10" (5131 mm)	17' 2" (5232 mm)	17' 2" (5232 mm)	17' 4" (5284 mm)	17' 6" (5334 mm)	17' 8" (5385 mm)
Tipping Load, Straight lbs** §	25,860 (11730 kg)	25,810 (11707 kg)	25,690 (11653 kg)	25,610 (11617 kg)	25,510 (11571 kg)	24,810 (11253 kg)
35° Turn	23,665 (10734 kg)	23,565 (10689 kg)	23,465 (10643 kg)	23,365 (10598 kg)	23,265 (11525 kg)	22,665 (10280 kg)
40° Turn	22,550 (10229 kg)	22,750 (10320 kg)	22,650 (10274 kg)	22,550 (10229 kg)	22,450 (11520 kg)	21,950 (9956 kg)
Operating Weight**	33,025 (14980 kg)	33,045 (14989 kg)	33,225 (15071 kg)	33,241 (15079 kg)	33,281 (15097 kg)	34,231 (15527 kg)

**For select items, add to or deduct from the machine operating weight and tipping loads as given in the chart below. All dimensions and specifications based upon unit with ROPS cab, 23.5 × 25, L2 tires, and Ca Cl₂ in rear tires.

Selected Items	Operating Weight Adjustments		Tipping Load Adjustments					
	lbs.	(kg)	Straight		35° Turn		40° Turn	
			lbs.	(kg)	lbs.	(kg)	lbs.	(kg)
ROPS enclosed cab	- 675	(306)	- 510	(231)	- 555	(252)	- 570	(259)
23.5 × 25, L2 w/o ballast	-2630	(1193)	-3900	(1769)	-3600	(1633)	-3400	(1542)
20.5 × 25, L2 w/75% Ca Cl ₂	- 666	(302)	-1000	(454)	- 960	(435)	- 880	(399)
20.5 × 25, L2 w/o ballast	-3115	(1413)	-4700	(2132)	-4300	(1950)	-4050	(1836)
Counterweight	+2000	(907)	+4400	(1959)	+4000	(1814)	+3850	(1746)

EQUIPMENT ATTACHMENTS

BUCKETS

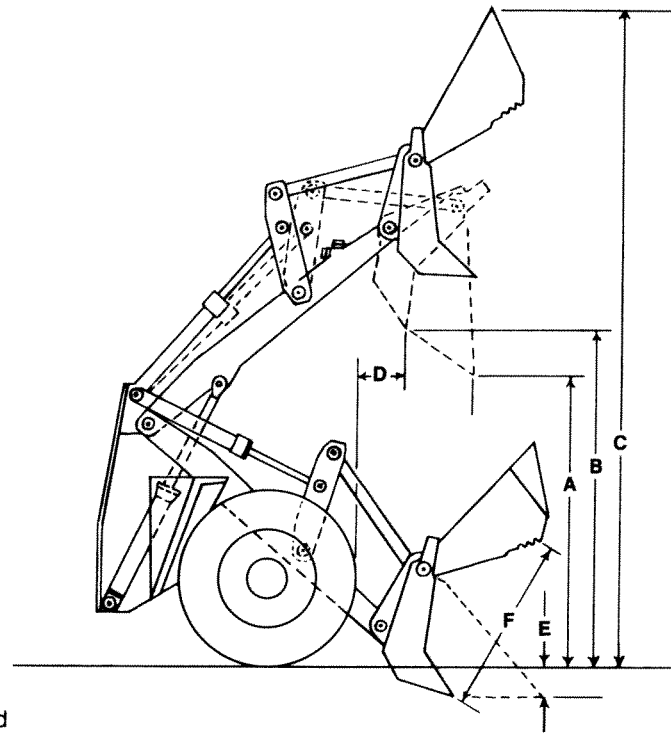
TYPE	Material Weight lbs (kg) per cu/yd (m ³)	Capacity cu/yd (m ³)		Cutting Edge Width-inches (mm)
		SAE Rated	Struck	
Excavating	3400 (1542 kg)	2.5 (1,9 m ³)	2.2 (1,68 m ³)	108" (2743 mm)
General Purpose	3000 (1361 kg)	3.0 (2,29 m ³)	2.6 (2,0 m ³)	113" (2870 mm)
General Purpose	3000 (1361 kg)	3.5 (2,68 m ³)	3.1 (2,37 m ³)	113" (2870 mm)
Light Material	2400 (1089 kg)	4.0 (3,1 m ³)	3.6 (2,75 m ³)	113" (2870 mm)
Light Material	1900 (951 kg)	5.0 (3,82 m ³)	4.4 (3,36 m ³)	120" (3048 mm)
4-in-1	3000 (1361 kg)	3.0 (2,29 m ³)	2.1 (1,61 m ³)	113" (2870 mm)

4-in-1 SPECIFICATIONS: §

A —Forward dumping clearance @ 45° discharge ◇.....	9' 7" (2921 mm)
B —Bottom dumping clearance @ 45° discharge ◇.....	12' 2" (3708 mm)
C —Overall height ◇	19' 2" (5807 mm)
D —Bottom dumping reach @ 45° discharge	18" (457 mm)
E —Digging depth	9 1/2" (244 mm)
F —Bucket opening	5' 1" (1549 mm)
Tilt back @ ground level	45°
Closure force, clamp to cutting edge	19600 lb (8890 kg)
Weight	3530 lb (1600 kg)

§ SAE code adhered to.

◇ Varies with tire size - 23.5 × 25,
L2, 12 PR tires used - Refer
to performance specifications.



Sold and serviced by:

STANDARD EQUIPMENT

Alternator. Voltage regulator. Batteries. 24 volt start. Front and rear flood lights. Taillight and stop light. Pusher fan. Two-element, dry-type air cleaner. Air horn. Powershift transmission. Air over hydraulic brakes. Parking brake. Voltmeter, engine oil pressure gauge, engine water temperature gauge, fuel level gauge, converter oil temperature gauge, clutch pressure gauge, air pressure gauge, tachometer. Automatic, adjustable bucket height kickout. Automatic return-to-dig mechanism. Drawbar.

OPTIONAL EQUIPMENT

Cab. ROP cab, ROP canopy, seat belt accompanies ROPS. Buckets. Log forks. Pallet forks. Power train guard. Engine side panels. Fenders. Heater and defroster. Cold weather starting equipment. Lockup kit. Tire inflation kit. Turn signals. Additional driving lights. Spark arresting muffler.

TIRES (front and rear)

- 20.5 × 25, 12 or 16 PR, traction-type, L2
- 20.5 × 25, 12 or 16 PR, rock-type, L3
- 20.5 × 25, 12 PR, rock-type, SSG, L3
- 23.5 × 25, 12 or 16 or 20 PR, traction-type, L2
- 23.5 × 25, 12 or 16 or 20 PR, rock-type, L3
- 23.5 × 25, 12 PR, rock-type, SSG, L3