

# SEEDING CATALOGUE



**CASE IH**

# CONTENTS

THE NEW AFS CONNECT STEIGER FAMILY .....	4 - 5
SEEDING PLATFORM KITS.....	6 - 7
ADJUSTMENTS .....	8 - 11
GENUINE LUBRICANTS .....	12 - 15
GENUINE FILTERS .....	16 - 17
GENUINE ENGINES .....	18
MAGNAPOWER™ BATTERIES .....	19
SEEDING MAINTENANCE .....	20 - 23
PRECISION FARMING.....	24 - 28

RAM® MOUNTS.....	29
TRACKS .....	30 - 34
HIGH PERFORMANCE PAINTS .....	35
CABIN PARTS .....	36 - 41
FIRE SAFETY .....	42
REMAN .....	43 - 47
TOYS.....	48 - 49
MERCHANDISE .....	50 - 51

## GETTING YOU THE PARTS YOU NEED, WHEN YOU NEED THEM

This year we will continue to support the CNH Industrial-operated dealer hub to help you get the parts you need, when you need them. This operation allows for the movement of parts from our national distribution centre in Sydney to twenty-four strategic dealer locations around the country to increase support, reduce delays and minimise downtime.

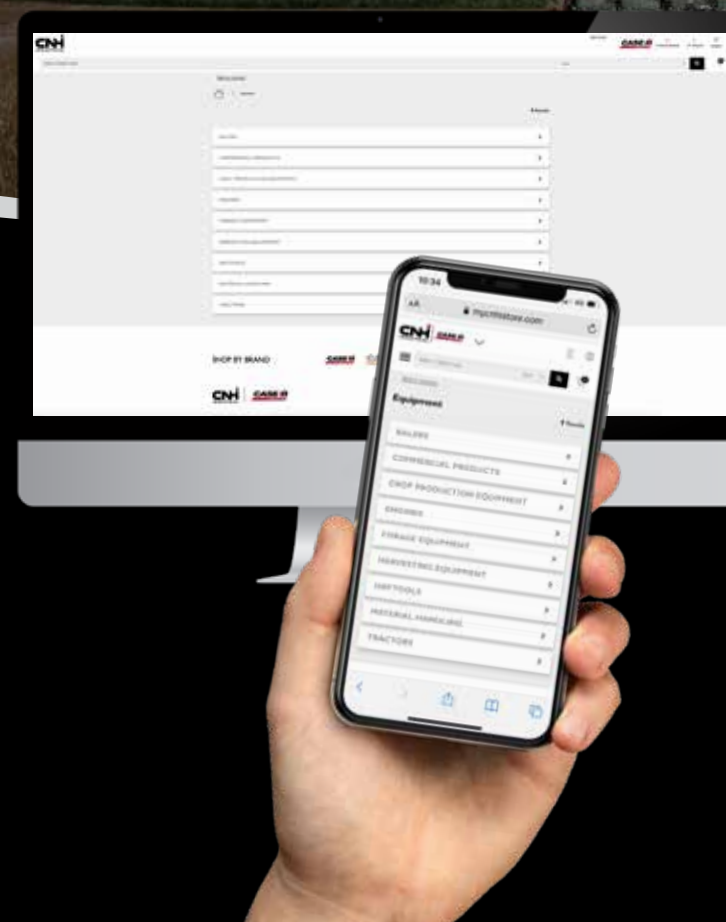
This initiative is designed to give you the ability to source parts quickly and efficiently to get your equipment back in the paddock in the shortest possible time.

## NEED A PART NUMBER?

You can now find the exact part numbers you need for your equipment via the MyCNHiStore.

Search by part number, model or category.

Click here for to find all  
the parts you need, fast!





## IT'S OFFICIALLY SEEDING SEASON!

There's no such thing as a lazy day when you're a farmer, each sunrise promises a new day filled with new challenges. While there may be many obstacles outside your influence, choosing the right tools to help you in the field is one of the factors you can control.

Late last year, the Bureau of Meteorology declared a La Nina event in the Pacific Ocean, the impact of which is the potential for a wetter than normal summer. Above-average spring rainfall in many regions has increased water availability for irrigated crops, and the moisture profile for dry area crops is well above average.

With ideal conditions in sight, this means an even bigger season ahead which might have you thinking about your options for the current cropping season. According to the federal Department of Agriculture, Australian summer crop production is forecast to increase, based on an expectation of an increase in the area sown and above-average yields.

Some of the challenges expected to affect Australian farmers this year include climbing input prices and supply chain issues. Our team is dedicated to delivering a wide range of high quality and affordable genuine and aftermarket parts as well as undergoing initiatives to make sure the parts you need are available.



# THE NEW **AFS CONNECT** **STEIGER FAMILY:**

Freedom to connect and configure the way you want.



## **WHEELED**

High-horsepower row crop tractors deliver industry-leading fuel efficiency for maximum productivity. With reliable power, advanced hydraulics and an industry-best turning radius, no job is too tough.

**Available on all AFS Connect Steiger models.**

## **ROWTRAC**

When traction and agronomic advantage are essential to your operation, the AFS Connect Steiger® Rowtrac™ tractors are the right choice. These tractors offer different track spacing ranging from 2-3m with 18, 21, 24 and 30 inch track width options available.

**Available on the AFS Connect Steiger 400, 450 and 500.**





Farmers and contractors alike will find a fit for their operations in the power and versatility of the five models and 27 configurations of AFS Connect Steiger tractors. As the leader in 4WD industry innovation, this lineup is ready for handling large-scale planters and tillage tools, moving tons of earth and operating nimbly between emerging crop rows. That's what it means to be Steiger Strong — a combination of power, performance, flexibility and superior operator comfort that is unequaled.

## QUADTRAC

More than 20 years of industry-leading track technology can be found in every AFS Connect Steiger Quadtrac® tractor, which features four individually driven, positive-drive oscillating tracks.

**Available on the AFS Connect Steiger 450, 500, 550, and 600.**



## SCRAPER

AFS Connect Steiger scraper models are proven workhorses, moving earth at the lowest possible cost per yard.

**Available on AFS Steiger Connect 500, 550 and 600 wheeled configurations only.**

\*It's so new, we don't even have pictures yet! Overseas models shown.



# SEEDING PLATFORM KITS

Components are engineered for superior compatibility and performance



## EARTH METAL QUALITY - LARGER, HEAVIER BLADES FOR LONG-LASTING DURABILITY

When it comes to the productivity of your Case IH seeder, only trust the best. Product support kits are available to help you repair or replace worn parts.

- 15 in. diameter, 4.5 mm thick opener blades with bevels on both sides are standard on 2000 series planters.
- Spring-tensioned opener disk scrapers maintain opener disk contact as the scraper wears and can be serviced without tools.
- Opener disk scraper kits include leading and trailing disk scrapers, as well as springs for the left hand (LH) and right hand (RH) sides of the row unit.

Part Number	Description
51691765	Opener disk - LH or RH
48030825	LH disk opener scraper kit
48030826	RH disk opener scraper kit
90324905	15" x 4.5mm leading
48118293	Bearing ball opener



## FORMING POINT AND SHOE KIT

- Kit includes forming point, seed shoe and hardware.

**48030831**



## CLOSING DISK KIT

- Kit includes one closing disk and hardware.

**48031218**



*Talk to your Case IH Dealer about what seeding platform kits are available to boost your productivity for the upcoming seeding season.*

## FORMING POINT KITS

Application: 800, 900, 950, 955, 1200 planters.

- Handy carded two-pack
- Use forming point gauge
- (sold separately; PN. 1958225C4) to assess forming point wear
- Heat treated

**B94735 (shown)**

Application: 2150, 2160 planters

**48030827** (forming point)



**B94735**

Part Number	Description	Features
<b>51447993</b>	KIT, AIR COMP. AUTO-DRAIN-2000 SERIES	Auto-drain kit installs on the factory planter air compressor and automatically drains any moisture accumulated in the reservoir.
<b>47927274</b>	GAUGE, ZEROING (1 per planter)	Zeroing gauge tool required to index (zero) the row unit depth on 2000 series early riser planters only.
<b>47464425</b>	KIT, ADVANCED SEED INFORMATION PRO 700 UNLOCK (1 per display)	Advanced Seed Information™ activation provides singulation, skips, multiples, sri, and good spacing metrics on the AFS Pro700 Display. Note: that the 1200 series AccuStat™ unlock will not work on the 2000 series.
<b>47726635</b>	SOLENOID VALVE	Used to add individual row liquid fertiliser control to planters with liquid option. Requires harness PN 47713655. 1 solenoid and 1 harness required per row.
<b>47713655</b>	WIRE HARNESS	Used to add individual row liquid fertiliser control to planters with liquid option. Requires solenoid valve PN 47726635. 1 solenoid and 1 harness required per row.
<b>47900707</b>	BOOT	Case IH factory liquid Fertiliser boot. Requires 2 pins (pn 84302529) and 2 cotter pins (pn 80755).

## CLOSING DISK KITS

Application: 800, 900, 950, 955, 1200 planters.

- Kit includes two disk assemblies, dust caps and hardware

**B95381 (shown)**

Application: 2150 planters

**48031218**



**B95381**

## DISK SCRAPER KITS

Application: 2150 planters

**48030825**

(LH row unit opener disk scraper)

**48030826**

(RH row unit opener disk scraper)

## ROW UNIT KIT

Application: 2150 planters

**47927274**

## CARRIER WHEEL MUD SCRAPER

Application: 2150 planters

**47832716** (12N/16RN)

## SOIL COMPACTION TESTER

Increases crop yield by measuring the extent and depth of soil compaction.

- 24" stainless steel rod with adjustable shock collar to prevent damage
- Easy-to-read, colour-coded, stainless steel dial that is liquid filled to reduce shock
- Durable moulded housing with rubber grips
- Penetration depth: up to 24" in 3" increments
- Large and small tip included with convenient storage in tester housing
- Green testing range (0-200 psi): good growing conditions
- Yellow testing range (200-300 psi): fair growing conditions
- Red testing range (300 psi and up): poor growing conditions
- Two tips included: 1/2" tip for firm soil and 3/4" tip for soft soil



**73340409**



# ADJUSTMENTS

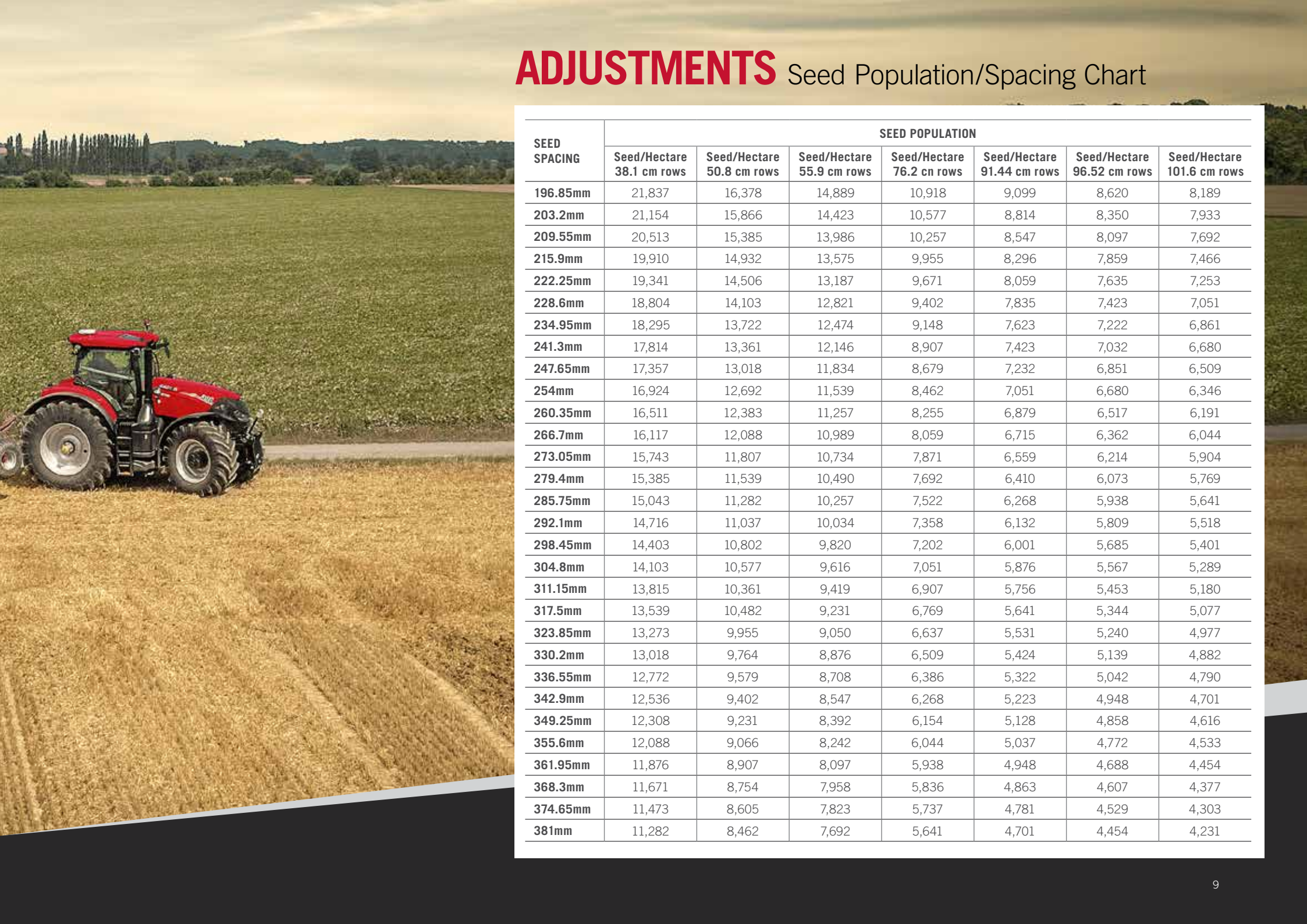
## Seed Population/Spacing Chart

SEED SPACING	SEED POPULATION						
	Seed/Hectare 38.1 cm rows	Seed/Hectare 50.8 cm rows	Seed/Hectare 55.9 cm rows	Seed/Hectare 76.2 cm rows	Seed/Hectare 91.44 cm rows	Seed/Hectare 96.52 cm rows	Seed/Hectare 101.6 cm rows
6.35mm	676,934	507,701	461,546	338,467	282,056	267,211	253,850
12.7mm	338,467	253,850	230,773	169,234	141,028	133,605	126,925
19.05mm	225,645	169,234	153,849	112,822	94,019	89,070	84,617
25.4mm	169,234	126,925	115,386	84,617	70,514	66,803	63,463
31.75mm	135,386	101,540	92,309	67,693	56,411	53,442	50,770
38.1mm	112,822	84,617	76,924	56,411	47,009	44,535	42,308
44.45mm	96,705	72,529	65,935	48,352	40,294	38,173	36,264
50.8mm	84,617	63,463	57,693	42,308	35,257	33,401	31,731
57.15mm	75,215	56,411	51,283	37,607	31,340	29,690	28,206
63.5mm	67,693	50,770	46,155	33,847	28,206	26,721	25,385
69.85mm	61,539	46,155	41,959	30,770	25,641	24,292	23,077
76.2mm	56,411	42,308	38,462	28,206	23,505	22,268	21,154
82.55mm	52,072	39,054	35,503	26,036	21,696	20,555	19,527
88.9mm	48,352	36,264	32,968	24,176	20,147	19,087	18,132
95.25mm	45,129	33,847	30,770	22,565	18,804	17,814	16,924
101.6mm	42,308	31,731	28,847	21,154	17,628	16,701	15,866
107.95mm	39,820	29,865	27,150	19,910	16,592	15,718	14,932
114.3mm	37,607	28,206	25,641	18,804	15,670	14,845	14,103
120.65mm	35,628	26,721	24,292	17,814	14,845	14,064	13,361
127mm	33,847	25,385	23,077	16,924	14,103	13,361	12,692
133.35mm	32,235	24,176	21,979	16,117	13,431	12,724	12,088
139.7mm	30,770	23,077	20,979	15,385	12,821	12,146	11,539
146.05mm	29,432	22,074	20,067	14,716	12,263	11,618	11,037
152.4mm	28,206	21,154	19,231	14,103	11,752	11,134	10,577
158.75mm	27,077	20,308	18,462	13,539	11,282	10,688	10,154
165.1mm	26,036	19,527	17,752	13,018	10,848	10,277	9,764
171.45mm	25,072	18,804	17,094	12,536	10,446	9,897	9,402
177.8mm	24,176	18,132	16,484	12,088	10,073	9,543	9,066
184.15mm	23,343	17,507	15,915	11,671	9,726	9,214	8,754
190.5mm	22,564	16,924	15,385	11,282	9,402	8,907	8,462





# ADJUSTMENTS Seed Population/Spacing Chart



SEED SPACING	SEED POPULATION						
	Seed/Hectare 38.1 cm rows	Seed/Hectare 50.8 cm rows	Seed/Hectare 55.9 cm rows	Seed/Hectare 76.2 cm rows	Seed/Hectare 91.44 cm rows	Seed/Hectare 96.52 cm rows	Seed/Hectare 101.6 cm rows
196.85mm	21,837	16,378	14,889	10,918	9,099	8,620	8,189
203.2mm	21,154	15,866	14,423	10,577	8,814	8,350	7,933
209.55mm	20,513	15,385	13,986	10,257	8,547	8,097	7,692
215.9mm	19,910	14,932	13,575	9,955	8,296	7,859	7,466
222.25mm	19,341	14,506	13,187	9,671	8,059	7,635	7,253
228.6mm	18,804	14,103	12,821	9,402	7,835	7,423	7,051
234.95mm	18,295	13,722	12,474	9,148	7,623	7,222	6,861
241.3mm	17,814	13,361	12,146	8,907	7,423	7,032	6,680
247.65mm	17,357	13,018	11,834	8,679	7,232	6,851	6,509
254mm	16,924	12,692	11,539	8,462	7,051	6,680	6,346
260.35mm	16,511	12,383	11,257	8,255	6,879	6,517	6,191
266.7mm	16,117	12,088	10,989	8,059	6,715	6,362	6,044
273.05mm	15,743	11,807	10,734	7,871	6,559	6,214	5,904
279.4mm	15,385	11,539	10,490	7,692	6,410	6,073	5,769
285.75mm	15,043	11,282	10,257	7,522	6,268	5,938	5,641
292.1mm	14,716	11,037	10,034	7,358	6,132	5,809	5,518
298.45mm	14,403	10,802	9,820	7,202	6,001	5,685	5,401
304.8mm	14,103	10,577	9,616	7,051	5,876	5,567	5,289
311.15mm	13,815	10,361	9,419	6,907	5,756	5,453	5,180
317.5mm	13,539	10,482	9,231	6,769	5,641	5,344	5,077
323.85mm	13,273	9,955	9,050	6,637	5,531	5,240	4,977
330.2mm	13,018	9,764	8,876	6,509	5,424	5,139	4,882
336.55mm	12,772	9,579	8,708	6,386	5,322	5,042	4,790
342.9mm	12,536	9,402	8,547	6,268	5,223	4,948	4,701
349.25mm	12,308	9,231	8,392	6,154	5,128	4,858	4,616
355.6mm	12,088	9,066	8,242	6,044	5,037	4,772	4,533
361.95mm	11,876	8,907	8,097	5,938	4,948	4,688	4,454
368.3mm	11,671	8,754	7,958	5,836	4,863	4,607	4,377
374.65mm	11,473	8,605	7,823	5,737	4,781	4,529	4,303
381mm	11,282	8,462	7,692	5,641	4,701	4,454	4,231

# ADJUSTMENTS

## Seed Meter, Vacuum and Bulk Hopper recommended settings

The vSet 2 Seed Meter will accurately plant most seeds. This chart is a guideline to help optimise performance. It provides the range setting for seed sizes best suited for respective disks.

																Bulk-Fill Settings (if Equipped)									
Crop	Seed LB (Kg)	Seed Meter Settings										SpeedTube™ compatible	Inductor Box Air Baffle	Pivot Transport		Small Front Fold			Large Front Fold						
		Crop Kit ‡ Part Number	Seed Disc				Singulator		Ejector		Additional Components			Baffle Position	Vacuum Setting (in-H <sub>2</sub> O)	23, 24, 31, 32 Row		12/16 Row	24 Row	32 and 36 Row					
			Name	# of Holes	Hole Size in (mm)	Part Number	Name	Part Number	Name	Part Number	Name						Part Number	Bulk Fan Speed (RPM)	Baffle Part Number	Bulk Fan Speed (RPM)	Baffle Part Number	Baffle Part Number	Bulk Fan Speed (RPM)	Baffle Part Number	
FIELD CORN																									
All	1,500-2,500 (454-1,134)	47779568‡	Corn	27	0.176 (4.47)	73368257	Corn	47779567	Corn	47779566			2	20 *	Yes	Large Seed	3,600	84594220	3,500	84594215	84594223	3,000	84594231		
	2500-2800 (1134-1270)**		Specialty	27	0.155 (3.93)	73368283	Corn	47779567	Corn	4778000			2	20 *	Yes										
* Up to 25 in-H2O vacuum pressure may be required for best results with SpeedTube™.																									
‡ Crop Kit 47779568 includes seed disc, singulator, and ejector.																									
** If seeds lb (Kg) is greater than 2500lb (1,134kg), p/n 73368283, 0.155"(3.93mm) specialty disk, may perform best. Test seed for final selection.																									
SOYBEAN																									
All	2,000-4,500 (907-2,041)	47779569‡	Soybean	80	0.155 (3.93)	73368263	Soybean	47852593	Soybean	47779570	Soybean Deflector ***	47946742	2	20 *	Yes	Large Seed	3,600	84594220	3,300	84594215	84594223	3,000	84594231		
* Up to 30 in-H2O vacuum pressure may be required for best results with SpeedTube™.																									
‡ Crop Kit 47779569 includes seed disc, singulator, and ejector.																									
*** When running soybeans with a SpeedTube™, the soybean deflector must be installed.																									
SWEET CORN																									
Small	2,000-4,600 (907-2,087)		Specialty	27	0.125 (3.17)	73368280	Corn	47779567	Specialty	47780001			4	18–22	No	Large Seed	3,700	84594220	3,700	84594215	84594223	3,000	84594231		
Medium			Specialty	27	0.135 (3.42)	73368281	Corn	47779567	Specialty	47780001			4	18–22											
Large			Specialty	27	0.145(3.68)	73368282	Corn	47779567	Specialty	47780001			4	18–22											
X-Large			Specialty	27	0.155 (3.93)	73368283	Corn	47779567	Specialty	47780001			4	18–22											
POPCORN																									
Small	1,500-4,800 (680-2,177)		Specialty	27	0.115 (2.92)	73368279	Corn	47779567	Specialty	47780001			2	20	No	Small Seed	3,500	47397652	3,700	47397652	47397656	3,000	47397660		
Medium			Specialty	27	0.115 (2.92)	73368279	Corn	47779567	Specialty	47780001			2	20											
Large			Specialty	27	0.125 (3.17)	73368280	Corn	47779567	Specialty	47780001			2	20											
SORGHUM/MILO																									
All	12,000-19,000 (5,443-8,618)	47818862‡	Large Sugar Beet	32	0.086 (2.18)	73368267	Corn	47779567	Sugar Beet	47780005			1	10–16	No	Small Seed	3,200	47397652	3,200	47397652	47397656	2,800	47397660		
‡ Crop Kit 47818862 includes seed disc and ejector.																									
COTTON																									
Singulated	4,200-6,300 (1,905-2,858)	73383183‡	Cotton	32	0.115 (2.92)	73383182	Corn	47779567	Sugar Beet	47780005			1	20–22	No	Large Seed	3,500	84594220	3,000	84594215	84594223	2,700	84594231		
2–Seed Hilldrop		47818855‡	2–Seed Hilldrop	40	0.115 (2.92)	73368275	Soybean	47852593	2–Seed Hilldrop	47780002	Up Restrict Brush	47819349	1	10–30											
3–Seed Hilldrop		47818857‡	3–Seed Hilldrop	39	0.115 (2.92)	47780047	Soybean	47852593	3–Seed Hilldrop	47780003	Up Restrict Brush	47819349	1	10–30											
‡ Crop Kits 47818855 and 47818857 include seed disc, ejector, and upper restrict brush. Crop kit 73383183 includes seed disc and ejector.																									
PUMPKIN																									
Canning			Specialty	27	0.125 (3.17)	73368280	Corn	47779567	Specialty	47780001			3	11–12	No	Not Recommended for Bulk Hopper Planters									
Ornamental			Specialty	27	0.125 (3.17)	73368280	Corn	47779567	Specialty	47780001			3	12–14											



# ADJUSTMENTS

## Seed Meter, Vacuum and Bulk Hopper recommended settings

															Bulk-Fill Settings (if Equipped)									
Crop	Seeds/lb	Seed Meter Settings												SpeedTube™ compatible	Inductor Box Air Baffle	Pivot Transport		Small Front Fold			Large Front Fold			
		Crop Kit ‡ Part Number	Seed Disc				Singulator		Ejector		Additional Components		Baffle Position			Vacuum Setting (in-H <sub>2</sub> O)	23, 24, 31, 32 Row		12/16 Row	24 Row	32 and 36 Row			
			Name	# of Holes	Hole size (in)	Part Number	Name	Part Number	Name	Part Number	Name	Part Number					Bulk Fan Speed (RPM)	Baffle Part Number	Bulk Fan Speed (RPM)	Baffle Part Number	Baffle Part Number	Bulk Fan Speed (RPM)	Baffle Part Number	
SUNFLOWER																								
Edible Large	2,000-4,000 (907-1,814)	47779568‡	Corn	27	0.176 (4.47)	73368257	Corn	47779567	Corn	47779566	Large Seed Upper Brush	47902637	4	12–13	No	Small Seed	2,800	47397652	3,200	47397652	47397656	2,700	47397660	
Edible Small	2,000-4,000 (907-1,814)	47779568‡	Corn	27	0.176 (4.47)	73368257	Corn	47779567	Corn	47779566			4	11–12										
#1	3,000-10,000 (1,361-4,536)		Specialty	27	0.155 (3.93)	73368283	Corn	47779567	Specialty	47780001			4	11–12										
#2	3,000-10,000 (1,361-4,536)		Specialty	27	0.135 (3.42)	73368281	Corn	47779567	Specialty	47780001			4	11–12										
#3	3,000-10,000 (1,361-4,536)		Specialty	27	0.115 (2.92)	73368279	Corn	47779567	Specialty	47780001			3	7–8										
#4	3,000-10,000 (1,361-4,536)		Specialty	27	0.115 (2.92)	73368279	Corn	47779567	Specialty	47780001			2	6–7										
‡ Crop Kit 47779568 includes seed disc, singulator, and ejector.																								
SUGAR BEETS / ONIONS <sup>Δ</sup>																								
Small <9.5/64 in.	> 28,000 (12,700)	47818859‡	Small Sugar Beet	32	0.062 (1.57)	73368271	Corn	47779567	Sugar Beet	47780005			1	10–20	No	Small Seed	3,200	47397652	3,200	47397652	47397656	2,500	47397660	
Large >9.5/64 in.	< 28,000 (12,700)	47818862‡	Large Sugar Beet	32	0.086 (2.18)	73368267	Corn	47779567	Sugar Beet	47780005			1	10–20										
‡ Crop Kits 47818859 and 47818862 include seed disc and ejector.																								
Δ If you experience very small seeds leaking out the bottom of the meter, consider adding 1-2 small ( 0.010 in) disk shims. Adding shims may increase vDrive® current draw and reduce stability, so should be removed when converting to other crops. Factory shimming on vSet® 2 is recommended in most circumstances for least current draw, best stability, and best seed spacing performance.																								
WHEAT <sup>Δ</sup>																								
All		48186717	Wheat	164	0.070 (1.77)	4816718	Soybean	47852593	Wheat	48186724	Up Restrict Brush	47819349	1–2	10–16	No	N/A								
Δ If you experience very small seeds leaking out the bottom of the meter, consider adding 1-2 small ( 0.010 in) disk shims. Adding shims may increase vDrive® current draw and reduce stability, so should be removed when converting to other crops. Factory shimming on vSet® 2 is recommended in most circumstances for least current draw, best stability, and best seed spacing performance.																								
EDIBLE BEANS <sup>*</sup>																								
Small	> 2,000 (907)	47779569‡	Soybean	80	0.155 (3.93)	73368263	Soybean	47852593	Soybean	47779570			2	18–22	No	Not Recommended for Bulk Hopper Planters								
Medium	1,300-2,000 (590-907)	73343542‡	Med. Edible Bean	70	0.170 (4.31)	73379218	Med. Edible Bean	73379219	Soybean	47779570	Large Seed Upper Brush	47902637	3	18–24										
Large	< 1,300 (590)	47818851‡	Large Edible Bean	32	0.210 (5.33)	73368998	Large Edible Bean	47852593	Large Edible Bean	47780004	Large Seed Upper Brush	47902637	4	18–26										
‡ Crop Kit 47779569 includes seed disc, singulator, and ejector.																								
‡ Crop Kit 73343542 includes seed disc, singulator, ejector, and large seed upper brush.																								
‡ Crop Kit 47818851 includes seed disc, ejector, and large seed upper brush.																								
• if within 200 seed/lb (90kg) of seed size range, test both of the disks.																								
CANOLA <sup>Δ</sup>																								
	75,000-180,000 (34,019-81,647)	47818864‡	Canola	80	0.047( 1.19)	47902738	Corn	47779567			Wiper Kit	47819357	1	22–26	No	Not Recommended for Bulk Hopper Planters								
‡ Crop Kit 47818864 includes seed disc and wiper kit.																								
Δ If you experience very small seeds leaking out the bottom of the meter, consider adding 1-2 small ( 0.010 in) disk shims. Adding shims may increase vDrive® current draw and reduce stability, so should be removed when converting to other crops. Factory shimming on vSet® 2 is recommended in most circumstances for least current draw, best stability, and best seed spacing performance.																								
PEANUTS																								
Small/Medium	500-1,400 (227-635)	47931266‡	Peanut	32	0.23 (5.84)	47902636	Soybean *	47852593 *	Large Edible Bean	47780004	Large Seed Upper Brush	47902637	4 †	20–30	No	Not Recommended for Bulk Hopper Planters								
Large	200-600 (91-272)	48186702‡	Large Peanut	29	0.250 (6.35)	48186707	NONE	NONE	Large Edible Bean	47780004	Large Seed Upper Brush	47902637	REMOVE BAFFLE	15-30	No									
‡ Crop Kit 47931266 includes seed disc, ejector, and large seed upper brush.																								
† For some seed sizes it may be necessary to completely remove the baffle to prevent bridging.																								
* For optimal performance with large, long seeds, the singulator may need to be removed.																								

# GENUINE LUBRICANTS



## NO. 1™ ENGINE OIL

As a safeguard against premature wear, our genuine No.1 Engine Oils™ have been specifically engineered to new, next generation MAT 3571, 3572, 3622 specifications. Our oils have been extensively tested to provide maximum protection in oxidation and aeration control, shear stability and proven performance life for the heavy-duty, high-temperature operation of agricultural and other off-road diesel-powered equipment.



### No.1 Engine Oil™ SAE 10W-40 API CK-4 MAT 3571



73394542 73394624 73394541

### No.1 Engine Oil™ SAE 15W-40 API CK-4 MAT 3572



73394619 73394620 73394536 73394537

### No.1 Engine Oil™ Super SAE 15W-40 API CI-4 MAT 3622



73394622 73394623 73394533 73394534

Lube Lookup is an online resource to assist in identifying the lubricants and volumes required for Case IH equipment.



## What does the MAT number on your oil container mean?

The MAT designation on your oil container is what differentiates it from the competition. It certifies that our oils have been tested and approved by CNH Industrial engineers to meet the demands of Case IH machines and help extend component life.

That's why the Case IH choice for oil is documented in the operator's manual and approved for warranty claims. Only those MAT specified oils can make that claim.



# QUALITY THAT YOU EXPECT

Tested, vetted and ready to revolutionise the industry

Increased performance means engines are running at higher temperatures and require high-performance lubricants to protect engine components from premature wear.

Overseas model shown.

## HY-TRAN® HYDRAULIC TRANSMISSION OIL - PREMIUM

With advances in technology, Case IH remains at the forefront with the newly improved Hy-Tran® Hydraulic Transmission Oil - Premium. This oil is designed to keep tractor transmissions, axles and hydraulic systems free from deposits while inhibiting wear, corrosion, sludge and foaming.



### Hy-Tran® Hydraulic Transmission Oil - Premium



73394639 73394634 73394521 73394522



## UNIVERSAL TRANSMISSION OIL - PREMIUM

Designed for use in transmissions, hydraulic systems, oil immersed brakes and other ancillary systems fitted to agricultural, construction and off-road equipment.

Excellent anti-oxidation, shear-stability, anti-wear, anti-corrosion and anti-foam characteristics result from the use of the latest additive technology leading to greater reliability and reduced downtime.



### Hy-Tran® Hydraulic Transmission Oil - Premium



73323224 73394644 73394527 73323225



# GENUINE LUBRICANTS

## HYPOID GEAR OIL 80W-90

Our Hypoid Gear Oil formula is designed to help prevent deposit formation and maximise oil drain intervals without compromising on protection. Our genuine gear oil contains a unique additive package, developed specifically for our machines to keep your equipment operating at it's peak performance.

Gears in agriculture equipment are subjected to immense pressure which without the proper lubrication, can lead to breakdown in the lubricant film resulting in scuffing at high temperatures. The unique formulation in our genuine gear oil is designed to withstand the extreme temperature and pressure of agriculture applications to sustain a long-lasting lubricant film between the gear sets to prevent the dry contact between surfaces which leads to premature wear.

By using only genuine gear oil, your differentials and gear sets are better protected for increased performance under extreme pressure and extended equipment lifetime.

### Features and Benefits:

- High load capability, anti-wear and extreme pressure properties extend equipment life
- Reduces maintenance costs under severe conditions
- Thermal and oxidation stability extends seal life and increases service life of equipment and lubricant

### Hypoid Gear Oil Extreme Pressure SAE 80W-90 MAT3516-A



73394648

### Hypoid Gear Oil Extreme Pressure SAE 85W-140 -MAT3516-B



73394574



73394575



## GREASE

Our grease is formulated with numerous additives to enhance and maintain consistent performance against high temperatures and extreme pressure.

This includes:

- antioxidants
- anti-wear
- extreme pressure additives
- friction modifiers
- dyes
- anti-weld and solid.



### Multi-Purpose 251H EP Grease Anti-Wear/NLGI 2 MAT 3555-A

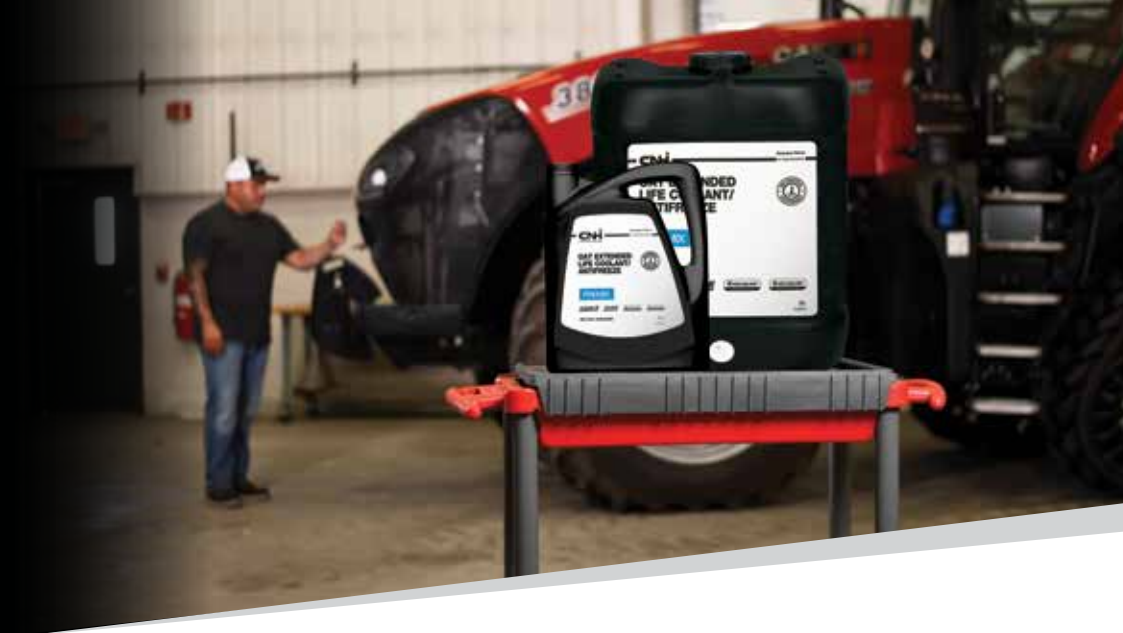


73394600



73394601





## OAT EXTENDED LIFE COOLANT

For use in tier 4 final/stage V and back.

This long service life coolant/antifreeze is based exclusively on a synergistic combination of Organic Additive Technology (OAT), providing excellent overall corrosion protection. Suitable for all heavy/light duty diesel, natural gas and gasoline engines, this formulation is approved by our engineers under the new next-generation MAT 3724 specifications and provides superior high temperature protection in extreme conditions.

It protects cooling system metals including brass, copper, solder, steel and cast iron against rust, corrosion, and deterioration, and also fights against deposit build up and cylinder liner cavitation.



### OAT Extended Life Coolant/Antifreeze - Premix MAT 3724



73394595



73394604



73394594



## ADBLUE®

In today's environmentally conscious world, vehicle emissions are becoming more stringent.

Case IH is committed to ensuring the products we manufacture and sell have a positive effect on the environment.

### The technology:

SCR systems require a reagent as part of the process to convert toxic Nitrogen Oxide (NOx) into harmless Nitrogen and Water. That reagent comes in the form of AdBlue®, an Aqueous Urea Solution of 32.5% Urea that is mixed in exacting proportions of deionised water (AUS32). This ratio is important to meet the correct rate of emission control requirements.

### How it works:

AdBlue® is injected into the exhaust system via an onboard dosing system in accordance with sensors feeding back information about the amount of NOx in the exhaust gases. The AdBlue® heats up in the exhaust pipe and converts to ammonia. The ammonia reacts with the catalyst in the specially designed muffler and converts harmful NOx into water and nitrogen. The On Board Diagnostic (OBD) adjusts the amount of AdBlue® that is injected into the exhaust to control the levels of NOx released via the tailpipe.



### AdBlue® - Aqueous Urea Solution



73322317



73322318



73322319



73322320

Our team is dedicated to maintaining a consistent source of AdBlue to keep your equipment running smoothly in the field. For current AdBlue availability, get in touch with your local Case IH dealership today.

# GENUINE FILTERS



## ENGINE OIL FILTERS

### DID YOU KNOW?

Our genuine engine oil filters:

- are 70% more efficient in filtering critical contaminants using our MicroLoc™ synthetic media compared to paper-based media
- allow filtered oil to reach the engine quicker with improved cold flow
- deliver high soot tolerance and dirt-holding capacity for greater filter life.

*For best performance, always use with genuine engine oil.*

### THE 30-60-90 HORSEPOWER RULE

Off-road equipment generates more usable horsepower – 30% more than on-road trucks and 60% more than automotive engines. Tighter tolerances and higher temperatures than ever before result in severe duty cycles. Therefore, off-road engines require high-quality filtration and increased durability.



**30%**  
**HORSEPOWER**  
**USAGE**



**60%**  
**HORSEPOWER**  
**USAGE**



**90%**  
**HORSEPOWER**  
**USAGE**

## FUEL FILTERS

### DID YOU KNOW?

As fuel travels through a typical fuel system, it picks up dirt and water. A typical litre of fuel can contain over five million contaminants.

**Few things impact equipment productivity faster than a low-quality fuel filter.**

Extremely high injection pressures and tight tolerances of today's low-emission engines make them highly sensitive to even the smallest amount of water or contaminants. With pressures as high as 30,000 psi, contaminants act as an abrasive jet, capable of eroding fuel pump and injector surfaces.

### CASE IH ADVANTAGE

Today's tier four certified engines require fuel to be 100x cleaner than engines built just a few years ago.

Our genuine fuel filters feature advanced design and go through extensive testing to optimise equipment protection and performance.

- MicroLoc™ synthetic media delivers high-efficiency filtration that removes up to 99.7% of contaminants.
- 2x more dirt holding capacity extends the service life of your equipment.
- Offers better injector and fuel pump protection by eliminating more contaminants than competitor filters.
- Patented self-venting drain valve on fuel/water separators dramatically improves removal of free and emulsified water.

*As fuel travels through the typical supply chain, it picks up dirt and water that is harmful – or even deadly – to your engine.*







## ENGINE AIR FILTERS

### DID YOU KNOW?

A typical diesel engine requires more than 3,000 litres of clean air for every litre of fuel it burns. The better an engine can breathe, the better it can work.

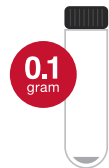
**Case IH works diligently to specify particular filter requirements.**

- Filter media, materials, seals and design features are engineered specifically for the machine to which they are fitted.
- As an example, one of our flagship platforms has 42 different air cleaner filter specifications associated with design and performance.
- Will-fit filters do not integrate with whole machine performance system design.
- Initial savings with a will-fit filter may end up costing you much more when repairs are needed.

### CASE IH ADVANTAGE

**It only takes a few grams of dirt to dust an engine.**

Compare how much dust can pass through an air filter during 500 hours of operation.



**CASE IH MICROLOC™ FILTERS**

MicroLoc filter media  
**99.99% efficiency.**



**CASE IH STANDARD FILTERS**

Standard filter media  
**99.9% efficiency.**



**AFTERMARKET FILTERS**

Standard filter media  
**99% efficiency.**



## HYDRAULIC FLUID FILTERS

### DID YOU KNOW?

Hydraulic pumps are sensitive to contaminants as small as 10 microns – that's 10x smaller than a grain of table salt.

Without proper filtration, equipment can experience:

- slips
- rough shifts
- brake system chatter
- critical failure of internal components, such as excessive gear wear.

**A vast majority of hydraulic component failures are caused by dirt particles.**

**Up to 70% of these failures can be prevented with proper filtration.**

Only genuine hydraulic filters have up to a 99.9% efficiency at a lower micron rating compared to the competitor.

*For best performance, always use genuine hydraulic transmission fluid when recommended by the operator's manual.*



### CASE IH ADVANTAGE

FILTER	CAPACITY (G)	GENUINE PARTS ADVANTAGE	AVG. PRESSURE AT FAILURE (PSID)	GENUINE PARTS MIN. SPEC (PSID)	ADVANTAGE
Competitor	130	<b>48% greater capacity</b>	189	200	<b>26% stronger</b>
Case IH Genuine Parts	193		239		

*Results from a field test of genuine filter (84226263) versus competitor filter (ISO 16889).*

# GENUINE ENGINES

Our engines are at the forefront of technology. The tasks in a farm are varied and sometimes very complex, but nothing is impossible with the right technology on a tractor if powered by one of our genuine engines. Depending on the requirements of the mission, they can adopt variable-geometry and two-stage turbochargers, high-pressure Common Rail injection, patented after-treatment systems and more.

Our genuine engines have been vigorously tested and improved to exceed growing requirements in performance and efficiency, while complying with stricter emission regulations.



Part Number	Application
5801509339	Steiger 450, 500
5801507161	Quadtrac 450, 500
5801425055	Puma 170, 185
5801793848	Magnum 280, 310, 340, 380
5801507162	Quadtrac 550

# MAGNAPOWER™ BATTERIES

Made for Australia's toughest environments

## Did you know?

The number one killer to all batteries is vibration. Extended vibration can crack battery welds and plates, causing electrical shorts. Another leading cause of battery failure is exposure to high temperatures which can result in batteries discharging more or undergoing sulfation (the crystallisation of lead sulfate) which reduces the batteries ability to charge.

## What is the benefit of using a premium battery for my equipment over a standard car battery?

MagnaPower™ premium batteries are built for the harsh conditions agriculture equipment is exposed to when bouncing across a field or job site. MagnaPower™ batteries also contain larger and heavier lead connections than typical off-the-shelf batteries. They utilise a unique epoxy bonding design to secure the internal grids to prevent shorts caused by excessive vibration and shocks.

## How can you get the most out of your batteries?

In agricultural settings, batteries are often stored for longer periods of time (for example between seasons) and we would recommend investing in a professional charger to monitor the ongoing health of your batteries or should your battery need a kick start.

## What makes MagnaPower™ batteries stand out from the rest?

- LifeGrid™ technology for consistent performance
- Large inter-cell connectors provide superior vibration protection
- Heavy-duty container for maximum durability
- Epoxy anchor bonding for improved strength



Talk to your Case IH dealer for more information on our extensive range of batteries for passenger vehicles, SUV/4WD/light commercial vehicles, heavy-duty trucks, motorcycles and marine applications.



# SEEDING MAINTENANCE

Sow the benefits

## CABLE TIE PACKS

- Assorted Colours – Blue, Green, Yellow, Pink, Orange

Part Number	Length	Colour	Pack Qty
TDCTP31	200 x 4.8mm	Assorted colours	100
TDCTP32	300 x 4.8mm	Assorted colours	100
TDCT154BKCD	150 x 4mm	Black	100
TDCT205BKCD	200 x 5mm	Black	100
TDCT305BKCD	300 x 5mm	Black	100
TDCT408BKCD-100	400 x 8mm	Black	100
TDCT559BKCD	550 x 9mm	Black	25
TDCT759BKCD	750 x 9mm	Black	25



## CABLE TIE ASSORTED PACK

**Part Number: TDCTP07**

- Assorted pack for a variety of applications
- Red - 100mm x 2.5mm
- Yellow - 100mm x 2.5mm
- Blue - 100mm x 2.5mm
- Black - 150mm x 2.5mm
- Natural - 150mm x 2.5mm
- Pack Qty: 500



## CABLE TIE COMBO PACK

**Part Number: TDCTCP10**

- Contains 1000 popular black cable ties in assorted sizes
- 3 x 100mm (Qty 200)
- 4 x 150mm (Qty 200)
- 5 x 200mm (Qty 400)
- 5 x 300mm (Qty 200)

## BULK HOSE CLAMP PACK includes plastic carry box

**Part Number: TDMP125**

- Multi-purpose stainless steel part
- Solid band clamp
- Covers ranges: 11 - 70mm
- 125 clamps



## DOUBLE EAR CLAMP PACK

**Part Number: TDTEC300**

- Suitable for use on compressed air, gas and liquid lines
- All popular sizes
- 300 hose clamps with pinching plier



## HOSE CLAMP PACK

**Part Number: TDCVP82SS**

- Corrosion resistant
- Covers ranges: 6 - 51mm
- 82 clamps
- Perforated full stainless steel



## RUBBER LINED CLAMP PACK

**Part Number: TDTRLC90K**

- For pipes, cables, groups of cables, hoses etc
- Removable rubber lining
- Covers sizes 3.2 - 17.5mm
- Contains 90 rubber lined clamps



## HOSE CLAMP PACK

**Part Number: TDCVP82**

- General purpose clamp
- Covers ranges: 6 - 51mm
- 82 clamps
- Perforated stainless steel part



# SEEDING MAINTENANCE

Be prepared with these handy items

## SEED FLOW LUBRICANTS

### Why is a seed lubricant necessary?

Our Seed Flow Lubricants are comprised of either 100% graphite or a 50/50 talc graphite blend. Graphite is a dry lubricant used to loosen the moving components inside the seed meter, reducing friction and wear. Talc works as a drying agent by coating the seeds to minimise moisture absorption – especially important in air planters. Plus, graphite and talc have anti-static characteristics that help prevent static electricity from developing on plastic metering disks.

### What are the benefits of seed flow lubricants?

- reduced seed meter component wear
- increased seed delivery consistency by lubricating the seed tank, inductor, hoppers, delivery lines and seed tube
- optimum seed drying capabilities and static electricity control to minimise clumping and bridging.

## HOSES

Part Number	Hose ID	Length	Colour	Description
87410257	7/8" / 22.2mm	100ft / 30.5m	Black	Poly EVA
4726	1" / 25.4mm	100ft / 30.5m	White	Poly EVA
86993485	1" / 25.4mm	100ft / 30.5m	Black	PVC
86992913	1" / 25.4mm	100ft / 30.5m	Black	Poly EVA
412786A1	1.25" / 31.75mm	100ft / 30.5m	Clear	Clear PVC
86992286	2.5" / 63.5mm	100ft / 30.5m	Black	PVC
3680	2.5" / 63.5mm	100ft / 30.5m	Clear	Clear PVC with white helix



Part Number	Application
407486R1	453 g, 100% graphite, fine particle size
73340733	3.63 kg, 100% graphite, fine particle size
73340370	453 g, 50/50 talc graphite blend, fine particle size
73340734	3.63 kg, 50/50 talc graphite blend, fine particle size



# SEEDING MAINTENANCE

## Battery essentials

### 12V BATTERY MONITOR

**Part Number: MA98416**

- DIY install in 2 minutes
- Bright colour coded LED's indicate battery voltage
- Fast, accurate and reliable
- Water and dust proof to IP67



**MATSON**

### BLUETOOTH® BATTERY MONITOR

**Part Number: MA98415**

- Real-time battery monitoring of up to four devices simultaneously
- Monitors can be combined for 24V, 36V and 48V systems (One monitor required per battery)
- Stores and displays historical data
- Tests vehicle cranking and charging systems



### 12/24V LITHIUM JUMP STARTER

**Part Number: MA35000**

- 12V/24V applications
- Automatic system voltage sensing
- 35,000mAh internal battery capacity
- LiFePO cells for extra safety and stability



### BATTERY CHARGERS

- One step operation
- Fully automatic charging
- Maintains optimum battery condition



Part Number	AMP	Input	Output	IP65
AE120E	1.2	240 VAC, 50Hz	12VDC	No
AE300E	3	220-240 VAC 1A 50/60HZ	12VDC 3A	Yes

### CLEANERS | LUBRICANTS AND PENETRANTS | PROTECTANTS | SPECIALTY

CRC's manufacturing of cleaners, lubricants, penetrants and other specialty products meet all the performance standards, certified to ISO 9001. Continually meeting this standard and gaining recertification reflects their ongoing commitment to quality and consistency.



**AUSTRALIAN MADE FOR AUSTRALIAN SUPPLY**





# SEEDING MAINTENANCE

## Workshop tools

### DIESEL INJECTOR PORT CLEANING KIT

Part Number: TL304052

- Cleans injector ports and seats prior to new injector installation
- Features reusable plugs to prevent contaminants and debris from falling into cylinders during intensive cleaning process
- Includes various size brushes and attachments for deep cleaning

### CROWFOOT WRENCH SET 3/8"

Part Number: TL321265

- Metric flexible flare type crowfoot wrench set suitable for automotive, industrial and engineering applications
- Flexible head allows 200° of movement
- Suitable for hydraulic, fuel, air and brake fluid lines to avoid rounding the nut

### BOLT CUTTERS

- Suitable for general purpose use with soft and medium metal applications only
- Slim head centre cut jaw design enables close surface cutting

Part Number	Length
TL316002	450mm 18"
TL316004	750mm 30"
TL316005	900mm 36"



### COOLING SYSTEM FLUSHING GUN PNEUMATIC

Part Number: TL308239

- Provides high-pressure cleaning of radiators and heater cores
- Simply connect air line and water supply and pull trigger
- Essential tool for complete flush of cooling system from old coolant, dirt, rust and scale
- Size: Ø 19, 29, 32, 37, 40mm



FAMOUS  
TOLEDO

### KNIPEX COBRA® XS 100MM

Part Number: TK8700100

- Grips like a big tool: The smallest water pump pliers in the world with full functional capability
- Optimum access in the narrowest spaces: an especially compact design with a very slim head



### PLIERS WRENCH XS 100MM

Part Number: TK8604100

- Optimum accessibility, even in confined spaces: particularly compact design, very slim head
- One-handed fine adjustment by pushing for the simplest adjustment to different workpiece sizes



### HIGH LEVERAGE DIAGONAL CUTTERS

- High cutting performance with minimal effort
- For very tough, continuous use



### KNIPEX CUTIX UNIVERSAL KNIFE

Part Number: TK9010165BK

- The innovative and variably extended stabilisation bar allows for versatility, precision and faster cutting
- Exert targeted pressure on the back of the blade without risk of injury, no unintentional bending or breaking of the blade



Part Number	Med Hard	Hard	Piano	Length
TK7402180	3.8mm	2.7mm	2.2mm	180mm
TK7402200	4.2mm	3.0mm	2.5mm	200mm
TK7402250	4.6mm	3.5mm	3.0mm	250mm



# PRECISION FARMING

## Raven Applied Technology

Raven Applied Technology delivers impactful technology to growers and custom applicators around the world. From field computers to sprayer and planter controls, GPS guidance steering systems, and wireless technology, Raven provides precision agriculture products designed to reduce operating costs and improve yields.



### RUN BLOCKAGE MODULE

The Run Blockage Module (RBM) controls flow rate and will produce a seed count and row by row distribution bar chart display on an iPad. For in-cab display, pair with the Raven Control Module (RCM) for visibility on each seed run with integrated section awareness.

#### Features and benefits:

- Support for up to 240 FlowSense™ seed/fertiliser sensors
- Dust compensated optical technology allows for minimal cleaning during a season
- Can be configured as a standalone system via iPad and/or ISOBUS system
- Raven SeedView app available to download from the Apple store
- True section awareness, intelligent feedback when paired with Raven Rate Control Module
- Will produce seed count and row by row distribution bar chart display using iPad
- Customisable run time layout using the iPad interface
- Supportive of 1.25" (32mm) hose size
- FlowSense™ sensor has integrated status LED providing instant feedback for troubleshooting



Overseas models shown.

RAVEN





## ACCUBOOM™

Greater fuel and chemical savings, faster spraying times, ease-of-operation and more accurate spraying all add up quickly to improve your return on investment each and every season. Dollar for dollar, AccuBoom offers the fastest payback in precision ag equipment. AccuBoom automatic section control is your best protection against rising input costs to ensure you only use what you need.

### Features and benefits:

- Automatic on-off control for up to ten sections
- Eliminate costly skips and overlaps
- Adjustable look ahead function lets you adjust settings easily for the overlap you choose
- Speed compensation function accounts for how fast you are driving and ensures properly timed shut-off
- Optional remote control to help check nozzles quickly



## Raven boom controls

### HELPING YOU USE ONLY WHAT YOU NEED

Raven's high-performing boom controls use automatic boom height and section controls to improve your accuracy, savings, and profitability. This means less manual intervention, saving you time and effort along with a reduction in excess usage of inputs and chemicals for your operation.

Raven boom control systems are compatible with both Raven and non-Raven equipment and come with a range of options to match your system needs, budget and performance objectives.



## AUTOBOOM® XRT

Industry-leading radar sensor technology uses simultaneous ground and canopy detection to maintain optimal spray height for maximum product efficacy. Pressure-based control allows for smooth movement and quicker reaction time while center rack stability technology with optional dampers gives the operator complete control, maximising boom life.

### Why is boom height control important?

- **Drift**  
Having the boom too high can lead to spray drift.
- **Crop Damage**  
Having the boom too low can lead to crop damage.
- **Boom Damage**  
Running the boom into the ground can lead to equipment damage resulting in costly repairs and machine downtime.





# PRECISION FARMING

## ISOBUS Technology

### WHAT IS ISOBUS TECHNOLOGY?

ISOBUS technology allows computers, vehicles and implements — regardless of their brand — to “talk” to each other.

It's what makes “plug and play” possible across different brands. If a piece of equipment has ISOBUS, you can plug it into an ISOBUS Control Unit and get the same user interface (UI) and workflow, display to display, tractor to tractor.

For those with mixed fleet farms and several employees, ISOBUS can help keep operations running smoothly, as any operator can take any ISOBUS-capable tractor, plug the ISOBUS implement into it and begin working. They don't need to recall settings or do any additional setup because everything is loaded and ready to run, reducing downtime.



### ISOBUS MIDI 3.0

Rethink control with the Midi 3.0, an ISOBUS ECU (electric control unit), that makes possible the management of various implements like sprayers, spreaders, air-carts and planters without the need for an additional display or controller in the cab.

The Midi 3.0 uses an ISO capable display that allows for standard rate control functionality. As an optional extra, the task controller application can be enabled to automate rate and section control or as applied mapping (subject to implement capabilities).

### Features and benefits:

- One time setup with “plug-and-play” functionality
- Straightforward user interface
- Easily navigate and control multiple products, tallies, and sensor data
- Increase implement versatility, by making it ISOBUS compatible
- Use existing AFS Pro 700 or other ISOBUS compliant display
- Supports programming up to 12 sections or 10 + 2 fence nozzles



# AFS Connect

Keep track of what you've planted with AFS Connect. When you're not in the driver's seat, you can view planter and seeder performance remotely and set custom alerts to ensure your equipment is working at peak performance.



## LEVERAGE ALL YOUR DATA IN ONE PLACE

### Farm Management:

AFS Connect allows you to ensure your seed is placed accurately in the field based on prior years' data to achieve maximum yield.

- Field visualisation: Manage your application prescription and as-applied information to maximise your revenue based on growing conditions.

### Fleet Management:

Coordinate machine logistics to efficiently manage refueling, refilling and maintenance during tight planting windows.

- Machine dashboard monitoring: View planter and seeder parameters remotely to ensure proper seed placement.
- Custom alerts: Set alerts to warn if parameters fall outside acceptable ranges—including skips, singulation, doubles and more.

### Data Management:

Share and transfer prescriptions or as-applied data with a trusted advisor.



# RETHINK PRECISION FARMING AND CONNECTIVITY

with the XCN display range



## XCN-2050™

The XCN-2050™ huge 30.8cm HD colour touch-screen and customisable interface allows you to move and turn widgets on and off to meet their desired set-up. Driven by the familiar Android™ system, it offers stability and reliability within the same environment as mobile devices. Its rugged construction is designed to cope with the harshest environments.

- Impressive touch-screen display
- Customisable tablet-like interface similar to your other mobile devices
- Choice of configurations with Precision-IQ™ and FM-1000® Plus display software
- 30.8cm high definition colour touch-screen display
- Rugged construction for everyday field use
- One integrated camera with support for an additional external camera
- Easily transferred between vehicles



**It's your real-time farm management decision making tool in the cab.**



# RAM® MOUNTS

Leader in mobile  
mounting solutions

RAM® Mounts manufactures rugged and versatile mounting systems for precision farming displays, cameras, tablets, and other mobile devices that can be fitted on a wide range of vehicles and agricultural machinery.

With tractors, combines and other farm machinery now having up to five or more displays in a single cab, it can be difficult to mount monitors in a usable position. With the flexibility of the RAM® Mounts you can now mount all hardware with minimum vibration or movement.

## Premium design

Quick installation, infinite adjustability and dampening for the most demanding environments.

## Quality material

Mounting systems use powder-coated marine grade aluminium, lightweight high-strength composites and stainless steel hardware.

## Customisable

Various solutions to fit your specific needs.

## Reputation

RAM® Mounts solutions have been proven to last in agricultural environments for years.

## UNIVERSAL MOUNT ADVANTAGES:

- Universal for a variety of devices
- Easy to install
- Bar mount provides customisable installation
- Protect your device during off-road work days

*\* iPhone and iPad are not included*



Ram® X-Grip® holder for 9 " - 10" tablets  
Compatible with ram-22U ball adapter

**47762155**



Kit, tablet mount assy

**47762521**



Kit, phone mount assy

**47762523**



Ram double socket arm C ball

**87284257**



Base plate 1.5" (3.81 cm) ball  
AMPS round

**87284258**



U-Bolt base 0.75" (1.91 cm)  
to 1.25" (3.18 cm) diameter

**87284259**



Color display arm

**87386396**



Sq mount ram

**87386398**



Arm assy C size

**87645094**



Suction mount base

**48165853**



Universal smartphone mount

**ZAEBARPHONEMNT**

Universal tablet mount

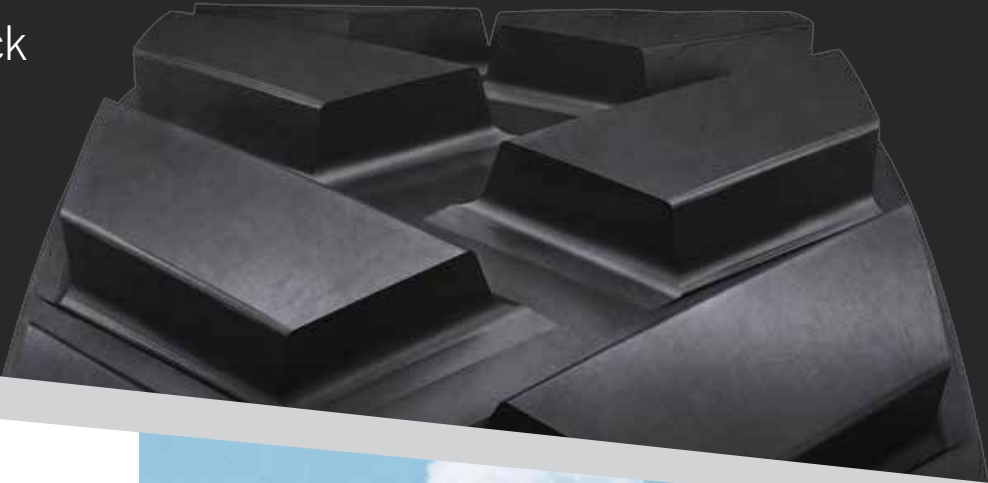
**ZAEBARTABLETMNT**



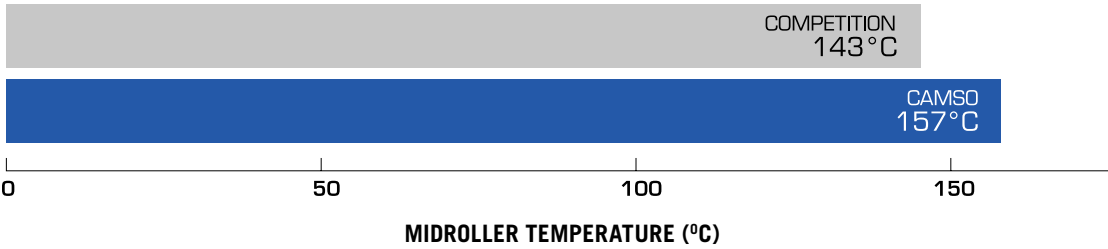
# TRACKS

## Camso RD 4500 - the next generation of roading track

Get out in the field faster with the new Camso 4500 high-roading track for Rowtrac tractors. These Camso tracks allow you to travel up to 40 km per hour on narrow tracks.



The Camso RD 4500 high-roading tracks are built to withstand a higher midroller temperature than competitor tracks to provide you with a durable track you can rely on in the field.



### RD 4500 HIGH-ROADING TRACKS TECHNICAL SPECIFICATIONS

Part Number	Track	Treadbars				Drive Lugs	Carcass		
		Qty	Height	Tip Width	Pitch		Plies	Main Cable	Thickness
51417218	16"	88	1.8"	3.2"	6"	44	4	5.4mm	35mm
51417219	18"								
51444172	21"								
51417221	24"								
51417222	30"								



Camso offers the broadest range of track width for Steiger and Magnum Rowtrac Tractors: 16, 18, 21, 24 and 30 inch

### **FASTER ROADING SPEEDS, BEST-IN-CLASS PERFORMANCE AND DURABILITY**

- Up to 50% faster than previous generation when travelling with implements
- Reduced travel time on the road means up to a 16% increase in field productivity
- Maximised uptime, in the field and on the road



#### **Longest lasting carcass**

##### **No material displacement during the manufacturing and curing process**

- Uniform tension distribution, eliminating downtime due to carcass tear

#### **Four-ply carcass**

##### **New carcass specifically designed for high-speed roading**

- Designed to endure higher internal temperatures during roading

#### **High-roading tread bar**

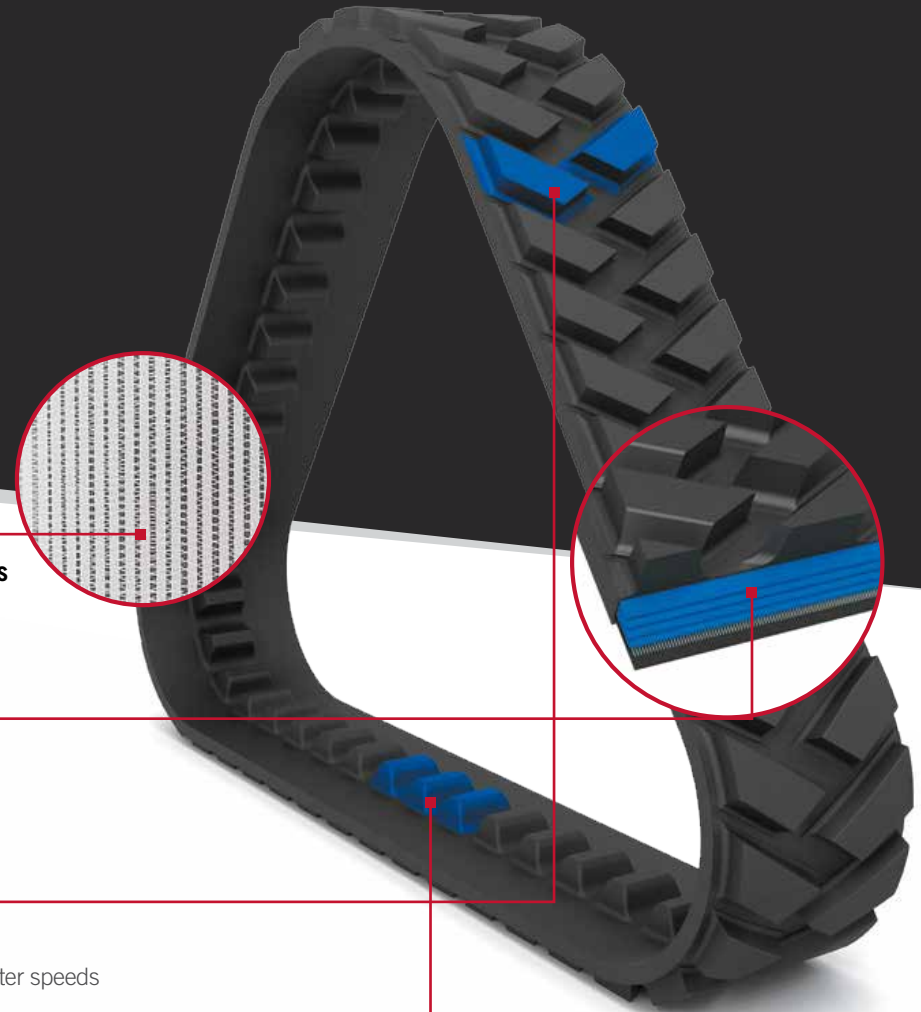
##### **New tread bar designed for high-speed roading**

- Enhanced tread bar shape and advanced rubber compound allowing for faster speeds

#### **Optimised drive lugs**

##### **Allows for maximum power transfer**

- Drive lug geometry designed specifically for Steiger and Magnum Rowtrac drive wheel





# TRACKS

## Soucy agricultural tracks for every terrain and situation

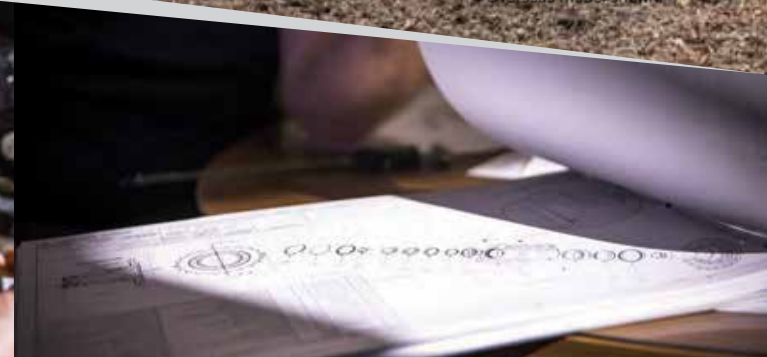
With the increase in demand for agricultural tracks we have taken steps to partner with original equipment manufacturer, Soucy, a leading manufacturer for tracks, to provide another alternative for rubber tracks.

Founded in 1967, Soucy has more than 50 years of experience in the development, design and manufacture of rubber tracks for the industrial, recreational, and military vehicle markets.

Since 2005, a line of track systems intended exclusively for agricultural equipment and vehicles was developed and was one of the very first track systems to be seen in the world of agriculture.



Overseas model shown.



Soucy's manufacturing processes have been successful throughout the years. They are now known for their practical benefits to farmers.

### RUBBER TRACKS MANUFACTURING

Rubber formulations developed by Soucy respond to the performance and durability requirements in farming applications. The rubber mixture, internal components as well as the track profile are engineered with only one objective in mind, which is to offer the best results for farmers, regardless of soil conditions.

### UHMW-PE MOULDING

Soucy developed expertise in UHMW-PE moulding. This material is ideal for manufacturing parts that are resistant to impact, corrosion, abrasion and wide temperature variations. This ultra-resistant plastic is also used to manufacture certain replacement wheels for track systems. Combined with rubber, UHMW-PE wheels are lighter, stronger and more efficient.

### QUALITY CONTROL

Each product goes through a rigorous development process. Concepts are validated with simulation software, in addition to real life field testing. As such, products meet the highest quality standards.





**Soucy tracks undergo testing for more than 1,400 days.**  
**The result: the most durable and efficient track on the market.**

**NEW DURABILITY STANDARD**

The unique rubber mixture developed by Soucy, as well as the inner layers of the track reduce wear substantially. Combined with a chevron high above the industry average, the lifespan of the track profile is significantly extended.

**BEST DRIVING COMFORT**

The tracks are designed to minimise vibration, to provide the best riding comfort making driving more pleasant and operators can work longer days.

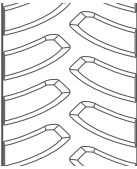
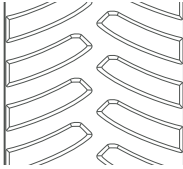
**FULL-WIDTH PERFORMANCE**

The track profile responds to all types of terrain. In the field, traction is excellent to make travel easier regardless of soil conditions. On the road, the track is incredibly effective thanks to its properties that minimise overheating. The operator can count on transport speeds of up to 40 km/h.

**AVAILABLE WIDTHS**

To meet the needs of crops in rows, and heavy-duty draft work, the track is available in two widths: 18 in (45.72 cm) and 24 in (60.96 cm).

**TRACKS FOR MAGNUM ROWTRAC AND STEIGER ROWTRAC TRACTORS**

	ACE R18	ACE R24
Part Number	51417162	51446937
Length	6,705.6 mm (264 in)	6,705.6 mm (264 in)
Width	457.2 mm (18 in)	609.6 mm (24 in)
Thickness	35.6 mm (1.4 in)	35.6 mm (1.4 in)
Profile Height	57.1 mm (2.25 in)	50.8 mm (2 in)
Steel Layer	4	4
Cable Diameter	5.2 mm (0.2 in)	5.2 mm (0.2 in)
Weight	311 kg (685.6 lbs)	390 kg (859.8 lbs)
		
Availability	April 2022	April 2022

Soucy tracks qualify for a 24 months or 1,000 hours warranty, for general agricultural application only.



# TRACKS

## Continental Trackman® Rubber Tracks



### TRACKMAN® ROWTECH™

Features 70% more tread rubber for greater damage resistance and improved ride quality.

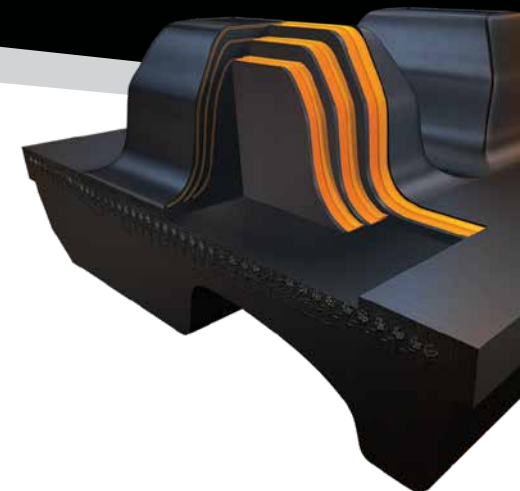
Built with four layers of MAXXTUFF™ steel belting in the carcass – the highest concentration of steel belting reinforcement in the market.

### WORLD'S STRONGEST DRIVE LUGS

ARMORLUG® ULTRA is the first patented drive lug with three fabric layers embedded in the lugs.

Easily handles today's biggest, most powerful tractors and is designed to take on more.

Lasts as much as 30% longer than any other positive-drive track and operators can work longer days.



Part Number	Application	Description	Width inches (mm)	Length inches (mm)	Tread Lugs	Lugs	Wire Plies	Carcass Thickness inches (mm)	Weight lb (kg)	Availability
51457436	Case IH Quadtrac®	Trackman® XP	30 (762)	252 (6400)	84	42	3	1.25 (31.75)	1058 (480)	April 2022
47826945		Trackman® XP and ARMORLUG®					4		1079 (489)	Available now
47801556	Case IH Rowtrac™	Trackman® RowTech™ and ARMORLUG®	18 (457.2)	264 (6705)	88	44	4		797 (362)	October 2022
47801558			24 (609)						1089 (494)	July 2022
47801559			30 (762)						1218 (553)	May 2022



Trackman

Outworks. Outlasts. Outperforms. **Out Here.**

WHAT'S MORE, THE ABOVE  
TRACKMAN® TRACKS COME  
QUALITY GUARANTEED WITH  
A STANDARD FOUR-YEAR  
WARRANTY.





# PAINTS

## Colours to stand the test of time

- A large range of manufacturer specified colours for genuine Case IH and Case IH Heritage brand products.
- Protects surfaces from rust and restores your farm machinery to look like new finish.
- Exterior durability and weathering.
- Easy application.

REINVIGORATE YOUR EQUIPMENT TO LOOK AS GOOD AS NEW WITH OUR HIGH PERFORMANCE PAINTS. VALIDATED BY ENGINEERING AND IDENTICAL TO THOSE USED IN PRODUCTION.



Overseas models shown.

Name	Aerosol	1 Litre	4 Litre
MS2 Power Red	B17670N	B17671LF	B17672LF
MS3 Red 1998	B17566N	B17564	B17562
CNHi Dark Grey	B96104	B96105	B96106
CASE MS19 Silver	B17567N	B17565	B17563
Semi-Gloss Black	73323148	73323169	73323190
CASE MS 45 Non Glare Black	990121N	1132129R1	B90886
CASE MS 42 Power Tan 4	B17660N	B17661	B17662
CASE MS 43 R/Oxide Primer	1131655N	991078R1	B90892
CASE MS 7 Power White	B17655N	B17656	B17657
CASE MS 50 Gloss Black	B17680N	B17681	B17682
IH 2150 Red	991012N	73323186	73323208
Grey Primer	B91253N	B91254	B91255
Buff Primer	73323150	73323171	73323191



MS2 Power Red



MS3 Red 1998



CNHi Dark Grey



CASE MS19 Silver



Semi-Gloss Black



CASE MS 45 Non Glare Black



CASE MS 42 Power Tan 4



CASE MS 43 R/Oxide Primer



CASE MS 7 Power White



CASE MS 50 Gloss Black



IH 2150 Red



Grey Primer



Buff Primer



# CABIN PARTS

Genuine lights are guaranteed to fit, built to last and allow you to work, day and night

When spending long days out in the field, the last thing you want is an uncomfortable, impractical, or unsafe cabin.

Now is the time to ensure your cabin is ready for this year's seeding season. Our high-quality, genuine lights will lower the overall cost of your machines with less downtime on replacing faulty or ill-fitting bulbs and improve your machine's durability with the proper visibility in and out of the field.

Our extensive range of lights will also optimise your performance throughout the season, ensuring that you can work safely, day and night.



## GENUINE LIGHTS

Part Number	Description	Application
84372205	Lamp, Work, Center 3 HID, Flood	Steiger® 500-600, Quadtrac® 450-600
84387054	Lamp, Work, Center 1 HID 2 Halogen	
87455677	Lamp, Work, Center 3 HID, Spot	
84607408	Bulb HID D1, 35W	Steiger® 350-600, Rowtrac™ 400-500, Quadtrac® 450-600
87722023	Bulb HID D1s, 35W	
84337818	Beacon, Rotating Amber, Flexible	
51485582	Beacon, Led Lamp, Amber, Flexible	
87475205	Lamp, HID, 12v, 35W, Clear	
47926473	Lamp, Rectangular, Turn SMV	
47923059	Lamp, Oval Led Worklamp 30W, 3000 LM	



84337818



84387054



87455677



47923059



84607408

# IF IT'S GENUINE, THE QUALITY IS GUARANTEED

## Doors, Glass, Mirrors and Wipers

When buying genuine parts, you're buying quality, durability and the guarantee that your parts will fit for the intended use.

Our range of genuine parts are built to the highest standards and designed to function seamlessly with your Case IH equipment.



### DOORS

Part Number	Description	Application
48145876	Door, LH	Steiger® 350-600, Rowtrac™ 400-500, Quadtrac® 450-600
47916477	Cab Glass, LH Door	
48145874	Handle, LH Door	
48081022	Door Seal, LH	
84369532	Cab Glass, RH Door	
84370668	Door Seal 4882mm	

### GLASS

Clear vision, safe operation. All genuine windows are made from either tempered or laminated glass, offering greater stress and impact-resistance, while providing more effective protection in the event of breakage.

Part Number	Description	Application
84358819	Front windshield	Steiger® 350-600, Rowtrac™ 400-500, Quadtrac® 450-600
47898563	Rear glass	

### MIRRORS

Part Number	Description	Application
87363073	Arm, RH Mirror, Manual	Steiger® 350-600, Rowtrac™ 400-500, Quadtrac® 450-600
87363070	Arm, LH Mirror, Manual	
87350494	Mirror Assy, Manual	
82015243	Mirror, Replacement	
B510883	Seal, Glass	

### WIPERS

Part Number	Description	Application
84211825	Wiper Blade, 22 in	Steiger® 350-600, Rowtrac™ 400-500, Quadtrac® 450-600
84394223	Wiper Blade, 26 in	
84211824	Wiper Arm, 20 in	
357662A1	Swiper Switch, Windshield	
84308841	Wiper Motor, Front Motor Assy	





# CABIN PARTS

## Seat Covers

When choosing from our range of genuine seat covers, you'll never need to pick between comfort and safety. Our seat covers are specifically designed to fit popular brands, such as Puma, Magnum and Steiger. All our seat covers are made with robust and comfortable materials, including a new high-quality 25mm sheepskin option for enclosed cabs. They also undergo strict quality control, ensuring that you can purchase a trusted product at a competitive price. To find the right seat cover for your needs, get in touch with your local dealer today.

### Sheepskin for enclosed cabs:

- high-quality 25mm sheepskin
- cool in summer, warm in winter
- lasting quality.



### SuperTuff canvas for open cabs:

- PVC backed
- reinforced stitching
- waterproof
- tailor-made to fit
- flame retardant.

### Rough country canvas for enclosed cabs:

- foam padded
- reinforced stitching
- waterproof
- UV stabilised
- tailor-made to fit
- flame retardant.



# Fridges



## GENUINE PORTABLE ELECTRIC FRIDGE

When you're out in the field, there's plenty of tough days when you're battling the sun, wind or rain. Sometimes you need to take a breather, grab a cold drink and admire your work before getting back to the grind. When you're spending time in the cab, it's nice to have some little luxuries for your home away from home.

### Features and Benefits:

- The fridge can be removed each night to take home, clean and repack.
- The fridge can be plugged in to keep your food cool.
- Two cords are provided with the fridge, 1000mm and 450mm so you can choose which length is right for you and avoid excess cabling.



Part Number	Description
48094639	Cool Box with Brackets - Steiger AFS Connect™
47789889	Cool Box with Brackets - Magnum™
48062994	Cool Box with Brackets - Magnum AFS Connect™ (Pre-MY21)
90488948	Cool Box with Brackets - Magnum AFS Connect™ (MY22)

## EXPERIENCE THE NEW DOMETIC CFX3

This season, keep your energy levels high with the new Dometic CFX3. This industry-leading fridge comes with flexible power options, a user-friendly interface, removable ice trays, temperature control, and a performance monitoring app.

No matter what hours you work, you can have confidence that your food will stay fresh and safe for when you need a pick-me-up in the field.

Part Number	Description	Storage Capacity (L)	Weight (kg)	Dimensions (W x H x D) (mm)
CFX335	Compressor fridge or freezer	36	16.9	398 x 407 x 694
CFX345	Compressor fridge or freezer	46	18.7	398 x 476 x 694
CFX355	Compressor fridge or freezer	55	20.4	720 x 480 x 455
CFX355IM	Compressor fridge or freezer, ice maker	53	21.3	720 x 480 x 455
CFX375DZ	Compressor fridge and freezer	75	27.8	892 x 472 x 495
CFX395DZ	Compressor fridge and freezer	94	29.8	962 x 472 x 530



### USER-FRIENDLY INTERFACE

Weatherproof high-resolution user interface displays operating status.



### CONVENIENT CFX3 APP

Temperature control and performance monitoring via CFX3 app.



### FLEXIBLE POWER OPTIONS

Powered by AC, DC and solar.



### REMOVABLE ICE TRAYS

Produces ice in a matter of hours.



# CABIN PARTS Aftermarket lights



**9-64V LED WORK LAMP FLOOD BEAM 6000LM RECTANGULAR 6 X 10W LED**

**NA72457**

- Delivers a powerful and high quality spread of intense, white light.



**9-64V LED WORK LIGHT FLOOD BEAM 1000LM OVAL 2 X 5W WITH 2 LEDs**

**NA72446**

- A powerful yet compact work lamp with two powerful 5W L.E.D.s ideal for close range illumination and where space is limited.



**9-64V LED WORK LAMP FLOOD BEAM 4000LM SQUARE 4 X 10W LED**

**NA72453**

- Four powerful and ultra reliable 10W L.E.D.s deliver a high quality spread of intense, bright white light.



**AMP CONNECTOR ASSORT**

**NA57500**

- Contains the full range of AMP Super Seal connectors including male and female terminals.



**2 WAY DTP DEUTSCH CON. KIT(1)**

**NA57314BL**

- 2 Way (Male/Female) DTP Connector Kit with Wedges and size 12 Terminals. Amp Rating: 25A - Blister Pack.



**4 WAY DTP DEUTSCH CON. KIT(1)**

**NA57316BL**

- 4 Way (Male/Female) DTP Connector Kit with Wedges and size 12 Terminals. Amp Rating: 25A - Blister Pack



**DEUTSCH CONNECTOR ASSORTMENT**

**NA57400**

- Contains a comprehensive assortment of Deutsch DT Series high end connectors including male and female terminals. Packed in a quality plastic case.

**DTM DEUTSCH CONNECTOR ASSORTMENT**

**NA57313**

- Contains a comprehensive assortment of Deutsch DTM connectors including male and female terminals. Packed in a quality plastic case.

**NARVA®**  
THE VISION TO GO FURTHER



**PROFESSIONAL POCKET LED PEN LIGHT**

**TS300600**

- Bright and robust pocket pen light for quick and easy illumination of dark work areas
- Lighting modes: bottom light with direct beam and work light with wide flood beam
- Inbuilt belt clip with magnet



**PROFESSIONAL FOLDABLE LED SLIMLIGHT**

**TS300606**

- Handy foldable pocket pen light for quick and easy illumination dark work areas
- Features three lighting modes: front fold out flood light with normal and eco modes, rear flood light and direct beam top light



**PROFESSIONAL FLOOD AND AREA WORKLIGHT**

**TS300609**

- Multifunctional flood and area light suitable for use in workshops, building and camping
- Stepless dimmer switch easily adjusts the brightness from 60 - 1000 lumens
- Built-in power bank allows for the charging of smart phones and tablets



**PROFESSIONAL SLIMLINE LED HEADLAMP**

**TS300607**

- Lightweight and easy to use LED headlamp allows for ease of lighting in dark areas while keeping your hands free
- Features three lighting modes: Eco, Normal and Sense Mode



**Sykes-Pickavant®**



# Communications



*Improve  
your mobile coverage.*

with  
CEL-FI GO Mobile smart signal repeater packs



## CEL-FI GO TELSTRA SMART SIGNAL REPEATER + CLR8-5G ANTENNA

### AXGO T +ANT

- This kit features the 73cm CLR8-5G high quality 7/9 dBi spring base antenna.
- Ideal for highway and all on/off-road communications.

**SPECIAL OFFER**  
Free two years extended  
warranty for a total of 4 years  
(VALUED AT \$130)

## MINI COMPACT UHF CD RADIO WITH 3.1dBi ANTENNA

### AXMACHINERYPACK

- The Machinery Pack is the ideal kit for construction & agricultural machinery.
- It comes with the PRO901 Mini compact, rugged UHF CB radio and 3.1dBi Antenna Kit.



**audioXtra**  
AUTOMOTIVE SOLUTIONS

For over 60 years, GME has been an industry leader in the RF communication technology space. GME remains a family-owned private company, and is proudly 100% Australian. GME is the only Australian manufacturer of UHF CB radios and emergency beacon products, with an ongoing focus on innovation and technology leadership. GME prides themselves on engineering and manufacturing high quality, market-leading products to suit the specific requirements of our customers.

## XRS™ CONNECT IP67 UHF CB RADIO WITH BLUETOOTH® & GPS

### XRS-390C

- Built-in GPS Receiver
- IP67 Ingress Protection: Waterproof & Dustproof
- MIL-STD 810G
- 5 Watt Transmission Power
- Professional-grade IP67 OLED Speaker Microphone
- 2 Watt Front-facing Speaker
- Bluetooth® Wireless Technology – Smartphone Control
- XRS™ Connect – Smartphone Application



## GPS PERSONAL LOCATOR BEACON

### MT610GAUS

- Compact, Lightweight Design
- IP68 Ingress Protection
- Integrated 72Ch GPS Receiver
- 7 Year Battery Life
- 121.5MHz Homing Transmitter
- Cospas-Sarsat Certified (Class 2)
- Easily Deployed in an Emergency
- Inherently Buoyant



# FIRE SUPPRESSION

Legally compliant with Australian standards

For an Australian, practicing and understanding fire safety and prevention methods is not only recommended, it's a necessity. Our environment means we're constantly faced with conditions that could ignite catastrophic damage within moments.

The inside chambers of agriculture equipment can climb to extreme temperatures, as is the nature of heavy-duty machinery. When chaff is picked up by fans or wheels and is caught inside, if they heat up, they can smoulder and catch on fire.

Checking your machines regularly to remove straw or grass build up is recommended, as well as checking spark arrestors are maintained. However even with diligent checks to your equipment, it's important to always be prepared for any scenario with the recommendation to always have at least two fire extinguishing options equipped to each machine.



Part Number	Description
CH2040/17	Fire extinguisher 1.0kg ABE dry chemical 1A:10B:E
CH2062/17	Fire extinguisher 1.5kg ABE dry chemical 2A:30B:E
CH2055/17	Fire extinguisher 2.3kg ABE dry chemical 2A:40B:E
CH2058/17	Fire extinguisher 4.35kg ABE dry chemical 4A:60B:E
CH2060/17	Fire extinguisher 9.0kg ABE dry chemical 6A:80B:E
CH1013/17	Fire extinguisher 9.0lt 3A water
CH1013/17F	Fire extinguisher 9ltr water f/guard filled
CH9LFOAM-FF	Fire extinguisher 9.0lt foam 3A:20B
CH70074	Fire extinguisher vehicle bracket HD suits 2.5kg to 4.5kg
CH70076	Fire extinguisher vehicle bracket HD suits 9.0kg

# REMAN

- **LESS DOWNTIME WITH INSTALLATION OPTIONS**

Because many of our remanufactured parts are ready to install, service technicians spend less time completing repairs or shop installs.

The result? Quicker turnaround and a whole new level of equipment uptime for you.

- **SIGNIFICANT SAVINGS**

Our remanufactured parts are competitively priced, offering great value while ensuring peak performance.

- **OEM PERFORMANCE**

Our remanufactured parts are engineered to deliver like -new performance that meets stringent Case IH performance specifications.

- **QUALITY**

Our remanufactured parts are completely disassembled. All parts are thoroughly inspected and reassembled to the latest OEM specifications.

## ENGINES

- Long block
- Short block
- Replacement engine

## ROTATING ELECTRICAL

- Alternator
- Starter motor

## ENGINE COMPONENTS

- Cylinder head
- Crankshaft
- Camshaft
- Crankcase
- Connecting rod
- Water pump
- Oil cooler

## FUEL

- Fuel injection pump
- Fuel injector

AC COMPRESSOR

TURBOCHARGER

BLOWER MOTOR

ROLLER WHEEL

## ELECTRONICS

- ECU
- Joystick
- Monitor

## HYDRAULICS

- Hydraulic pump
- Hydraulic cylinder
- Hydraulic motor

## DRIVELINE

- Axle
- Clutches
- Final drive
- Gearbox
- Transmission
- Torque converter



**REMANUFACTURED PARTS FOR YOUR STEIGER TRACTOR. GREAT QUALITY, EXCEPTIONAL VALUE.  
OUR GENUINE REMAN PARTS ARE THE SMART WAY TO KEEP YOUR MACHINERY **AS GOOD AS NEW.****

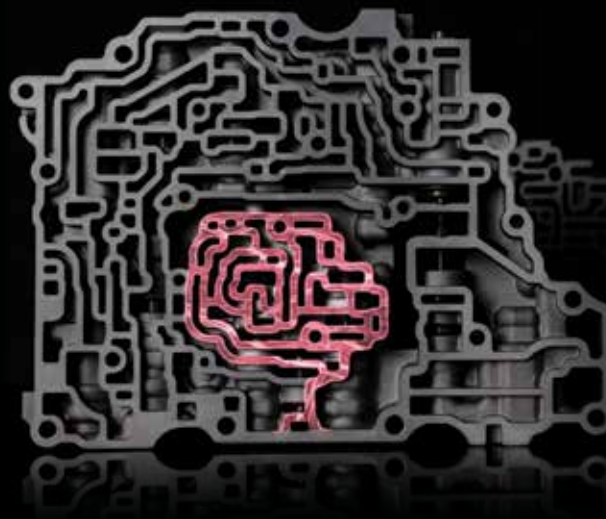


# REMAN ENGINES

## Why choose Case IH reman parts?

We've invested in the most sophisticated precision tools and machinery for our remanufacturing processes. Along with stringent quality processes in place to ensure our reman engines are delivered with like or better-than-new quality.

Our complete reman engines installed by authorised Case IH dealerships also come with a 24-month warranty period to give you peace of mind.



# RETHINK

CASE IH GENUINE REMAN PARTS.



### TESTING AND QUALITY MEASURES

- Replacement level engines with fuel systems undergo dyno testing to ensure proper oil pressure, exhaust temperature, horsepower, water and oil circulation, and overall functionality.
- Long block engines are spin-tested to confirm compression and oil pressure.
- Fluorescent Magnetic Particle Inspection is used to identify surface flaws.
- Sediment Testing confirms all remanufactured parts are clean for maximum operating life.
- Air Decay Testing will detect any fuel, oil, or water leaks.



### ENGINES

Part Number	Description	Application
5801507161ER	Reman engine	Steiger 550
47454080ER	Reman-long block	
47454080R	Reman-long block	



## Beyond a better rebuild

### A BETTER PROCESS RESULTS IN A BETTER PRODUCT

- **Camshafts** – Camshafts are examined and straightened, and all main journals and lobes are checked. Those that pass are machined to ensure proper valve lift and timing; those that do not meet specs are replaced with new.
- **Connecting Rods** – Connecting rods are thoroughly cleaned and checked for straightness; those that do not meet specifications are replaced with new. Both crank and piston pin bores are checked for size, and 100% new bearings and bushings are installed.
- **Crankcases** – Machining is performed to ensure all bores meet exacting dimensional specifications. Cylinder bores are honed with the latest technology. This level of precision ensures that bores meet EPA tier emission requirements. Wet sleeve engine sleeves are replaced 100% with new.
- **Crankshafts** – Crankshafts are dimensionally and structurally inspected, then ground and micro-polished to exacting tolerances.
- **Cylinder Heads** – All cylinder heads are inspected for cracks; those that pass are milled to ensure flatness. Valve seats and guides are machined with precision equipment to ensure proper valve seating, recession, clearance and runout.
- **Cylinder Sleeves** – Engine with wet sleeves are replaced 100% with new. In dry sleeve engines, cylinder bores are enlarged and honed. In the repair process, a liquid nitrogen cooling tank contracts cylinder repair sleeves before installation, so once set, they expand to a permanent, pressed fit.
- **Painting** – Guards, plugs, and grease protectant are used to avoid painting active surfaces. This prevents system contamination, misalignment, or leak-causing gaps created from melting or flecked paint.



# REMAN PARTS

Well-looked after machinery and equipment is the best foundation for an efficient sowing season and to prevent downtime in the field. When it comes to maintenance and repairs, Reman parts are a high-quality and cost-effective option. On average, a reman part is 30% cheaper than the equivalent new part. Reman parts also outperform used or rebuilt parts, making them an option you can trust to perform when it counts.



## DRIVELINE

Part Number	Description	Application
84478789R	Reman-wheel idler	Quadtrac 500, Rowtrac 500
84585561R	Reman-wheel idler	
47949049R	Reman-transmission	Quadtrac 600, Steiger 500, 550, 600
48145600R	Reman-wheel roller	Rowtrac 500, Quadtrac 500
87546434R	Reman-transmission	Steiger 385, 435, 485, 535
87546435R	Reman-transmission	
48029054R	Reman-wheel roller	
84317503R	Reman-transmission	Steiger 500

## ENGINE COMPONENTS

Part Number	Description	Application
47879369R	Reman-cylinder head	Steiger 385, 435, 485
5801931144R	Reman-water pump	

## FUEL

Part Number	Description	Application
504066263R	Reman-fuel inj pump	Steiger 385, 435, 485
504287108R	Reman-fuel injector	Steiger 485

## HYDRAULICS

Part Number	Description	Application
87308196R	Reman-hyd pump	Quadtrac 500, 600, Steiger 385, 400, 435, 450, 485, 500, 535, 550, 600
87308197R	Reman-hyd pump	
47639533R	Reman-hyd pump	Quadtrac 500, 600, Steiger 400, 450, 500, 550, 600
47479826R	Reman-valve hyd	
436536A1R	Reman-valve hyd	Quadtrac 600, Steiger 485, 500, 535, 550, 600
47528844R	Reman-hyd pump	Quadtrac 600, Steiger 500, 550, 600
432244A3R	Reman-hyd pump	Steiger 385, 435, 485, 535

## ROTATING ELECTRICAL

Part Number	Description	Application
504338098R	Reman-alternator	Quadtrac 500, 600, Rowtrac 500, Steiger 385, 400, 435, 450, 485, 500, 535, 550, 600
5801711014R	Reman-starter	steiger 385, 435, 485

## TURBOS

Part Number	Description	Application
504171476R	Reman-turbocharger	Steiger 385, 435, 485



# REMAN UNDERCARRIAGE WHEEL REPLACEMENTS

The Revolutionary Cost-Savings Technology for Roller and Idler Wheels

## NO BOND FAILURES GUARANTEED

- Proprietary bonding technology that resists heat and shear force to prevent debonding
- 12-month warranty

## LONG WEAR-LIFE

- Polyurethane compound engineered to generate less heat, reduce chunking, and provide the highest cut and tear resistance

## RESIST THE ELEMENTS

- Unlike rubber, polyurethane is resistant to oils, UV, weak acids, diesel fuel, moisture, and more

## EXTEND RUBBER TRACK LIFE

- Lower operating temperatures reduce rubber track deterioration
- Tough polyurethane will not capture debris or score the track

Overseas model shown.

Click here to match roller wheel kits to your tractor model.



## QUALITY YOU CAN COUNT ON!

- Our genuine remanufactured parts are completely disassembled, inspected, and reassembled to the latest OEM specifications

## SAVES TIME

- Everything you need is in the kit, no waiting for missing parts

## SAVES COSTS

- Cost less than purchasing individual parts

## SAME QUALITY

- Built to the latest Original Equipment Manufacture (OEM) specifications

Reman roller wheel kits include everything you need to replace a roller wheel.

These kits are competitively priced compared to buying each component separately.

## KITS INCLUDE:

- roller wheel
- cup, seal
- seal assembly
- two bearing cups
- two taper roller bearings
- bearing retainer and bolt
- clear cap with o-ring, plug and snap ring.



Part Number	Description	Application
48029054R	Reman roller wheel kit	Quadtrac
48029056R	Reman roller wheel kit	Magnum Rowtrac, Quadtrac Rowtrac

**Don't forget your oil!** Read the latest operator's manual for information on oil quantity and type.

# TOYS

## Ride-on toys

With a large range of ride-ons, scale toys and collectables, we've got your gifts sorted for the little or large tractor lovers in your life.



### 12V BATTERY OPERATED MAGNUM TRACTOR

Your little ones will have a ball on our all-new Magnum Tractor; riding around has never been more fun! Go anywhere thanks to extra traction tyres allowing for all terrain travel. With an extra-large stake side trailer to haul around everything they need for a good time your kids will delight in loading up the trailer and delivering their treasures, whether it's playing farm games or helping out with the gardening.

- Easy to drive with gears to accelerate or reverse
- Two speeds available, 3.6km/h and 7.2km/h
- Safety comes first with automatic brakes and a lockout feature to allow parents control of the speed
- Large side trailer with great carrying capacity
- Room to grow with adjustable seat and flip-up armrests
- Super traction wheels easily run over dirt, grass, gravel and hard paved surfaces
- Battery and charger included

### PEDAL TRACTOR WITH WAGON

Let children keep active with one of the most exciting pedal and chain drive vehicles around! Fill up the trailer on the back and deliver goodies as part of exciting farm play or to help mum and dad with the chores!

- Enclosed bicycle chain to protect curious, little fingers
- Adjustable bucket seats with roll-bar, perfect for a growing child
- Heavy-duty tractor wheels run easily over dirt, grass, gravel or hard paved surfaces



44060



44065



Sit N Scoot  
73322295



Pedal tractor with trailer  
73322346



Pedal tractor with loader  
73322351



44062



## Scale toys and collectibles



Magnum 380

Puma 195



Optum 300 CVT



Magnum 340 Rowtrac



Magnum 340



Steiger 580 with Grouser blade



Steiger 620 Quadtrac

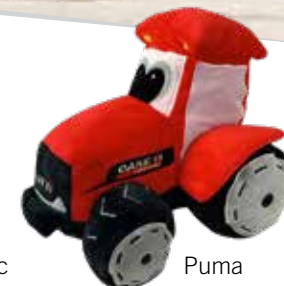


Steiger 500 with semi

## Plush toys



Quadtrac



Puma

Click here to find your local  
Case IH dealer.

CLICK  
HERE



# MERCHANDISE

Wear it loud and proud

## JACKETS

Limited Edition Adventure Jacket



Limited Edition Contrast Jacket



Burlington Tempest Jacket



Grey long sleeve tyre tee



## LONG SLEEVE SHIRTS

Red power long sleeve tee



Long Sleeve Black Polo

## SHORT SLEEVE SHIRTS

Harvester t-shirt



Mens red t-shirt



Crest black t-shirt



Mens red claremont polo



Cambridge polo



Ladies white claremont polo



Ladies pale pink cotton polo



## VESTS

Ranger oilskin vest



Minnesota vest



Click here to find your local Case IH dealer to shop their in-store collection today.



## ACCESSORIES

### BLUETOOTH® SPEAKER

The Case IH Bluetooth® speaker offers high definition stereo sound and is compatible with all mobile devices that support Bluetooth®. Its compact and sleek design means that it can be used anywhere without compromising on the sound quality.

#### Features include:

- wireless connectivity range of over 10 meters
- can be used with an audio cable
- three to four hours of playing time
- easy to recharge with a laptop, power bank or USB mains charger
- microphone for phone and conference calls
- play, pause and switch tracks directly from the speaker.

Each Case IH Bluetooth® speaker will be packaged in a gift box accompanied by a micro USB cable, audio cable and instruction leaflet.



Harvest backpack



Tasman black duffel bag

Red backpack



Picnic blanket

Chevron bottle opener



Snappy bottle opener keyring - black



## HEADWEAR



Retro IH flat peak cap



Homestead flat peak cap



Ladies pink cap



Leo cap



Tenneco cap



Halo beanie



Cream and Red Nebraska Beanie



## DRINKWARE



Silicone Stubby Holder



Glass Karma Cup



900ml metal drink bottle



Thermo Bottle 750ml

Click here to shop the whole range on the Case IH Store.







     
**caseih.com**

31-53 Kurrajong Road, St Marys NSW, 2760, Australia

Case IH reserves the right to make improvements in design and changes in specifications at any time without notice and without incurring any obligation to install them on units previously sold. The specifications, descriptions and illustrative material contained herein are as accurate as known at time of publication, but are subject to change without notice. Illustrations may include optional equipment and accessories and may not include all standard equipment.

**CASE IH**