

SUGARCANE PARTS CATALOGUE



CASE *II*

CONTENTS

AUSTOFT 9000	4	DRIVE BELTS	19	HIGH PERFORMANCE PAINTS	38
THE NEW AFS CONNECT FAMILY	5	GENUINE ENGINES	20	CABIN PARTS	39 - 44
CANE HARVESTER BLADES AND DISCS	6 - 7	MAGNAPOWER™ BATTERIES	21	FIRE SUPPRESSION	45
UNDERCARRIAGE COMPONENTS	8	MAINTENANCE SOLUTIONS	22 - 23	REMAN	46 - 49
ROLLER CHAINS	9	MAINTENANCE TOOLS	24 - 26	FUEL SYSTEMS	50
COMBO-JET® SPRAY TIPS	10 - 11	CLEANING SOLUTIONS	27	SAFETY SIGNS	51
GENUINE LUBRICANTS	12 - 15	PRECISION FARMING	28 - 31	TOYS	52
GENUINE FILTERS	16 - 17	RAM® MOUNTS	32	MERCHANDISE	53
NEXPRO FILTERS	18	TRACKS	33 - 37	REDXTEND	54 - 55

TRUST CASE IH TECHNICIANS. IT'S WHAT WE DO.

SERVICE BY CASE IH

GENUINE EXPERTISE. GENUINE CARE.

Only your local Case IH dealer is trained by the organisation that made your machine and is well-versed in the latest, most comprehensive service and diagnostic techniques. Your dealer can spot important maintenance issues before they become costly repairs and offer preventative maintenance and warranty plans that guarantee the lowest cost-of-ownership over the life of your machine.

Case IH dealers can offer advice on selecting and financing the right machine, will ensure they deliver what you need when you need it, and will then continue to back you and your equipment with the service and spare parts backing you'd expect from a name as trusted as Case IH.

LEADING WARRANTIES

FOR YOUR PEACE OF MIND

Case IH equipment is produced in world-class manufacturing facilities. We stand by our products and trust they'll deliver years of productivity for your farming operation.

As well as our standard manufacturer's warranty†, we also offer our RedXtend on many Case IH machinery models. When the unexpected occurs, you need to know your equipment is protected. At Case IH we understand the importance of your machinery being in good working order when it counts. Case IH RedXtend is a purchased service contract designed to help keep your equipment working well beyond the manufacturer's base warranty period while taking away the concerns of the cost and inconvenience of mechanical failure.

Plans can be customised to meet individual needs and the plans may be financed through CNH Industrial Capital.

CASE IH PARTS

GENUINE PARTS FOR GENUINE PERFORMANCE

The thing about non-genuine parts is that you never know when they're going to let you down. Only genuine Case IH parts are made for your machine and are designed to promote peak performance. From crucial wear parts to everyday maintenance products, everything you put in your machine matters. You most likely chose Case IH for its reliability and performance. It's therefore critical to keep it a Case IH. We engineer, manufacture and choose parts based on the strictest design and testing standards.

And for those looking for a high quality, low cost alternative to original parts, Case IH dealers have a complete range of Reman Parts. Re-manufacturing gives you the opportunity to purchase replacement assemblies and components that are just like new at a reduced price and with a competitive warranty.



GETTING YOU THE PARTS YOU NEED, WHEN YOU NEED THEM

This year we will continue to support the CNH Industrial-operated dealer hub to help you get the parts you need, when you need them. This operation allows for the movement of parts from our national distribution centre in Sydney to twenty-four strategic dealer locations around the country to increase support, reduce delays and minimise downtime.

This initiative is designed to give you the ability to source parts quickly and efficiently to get your equipment back in the paddock in the shortest possible time.

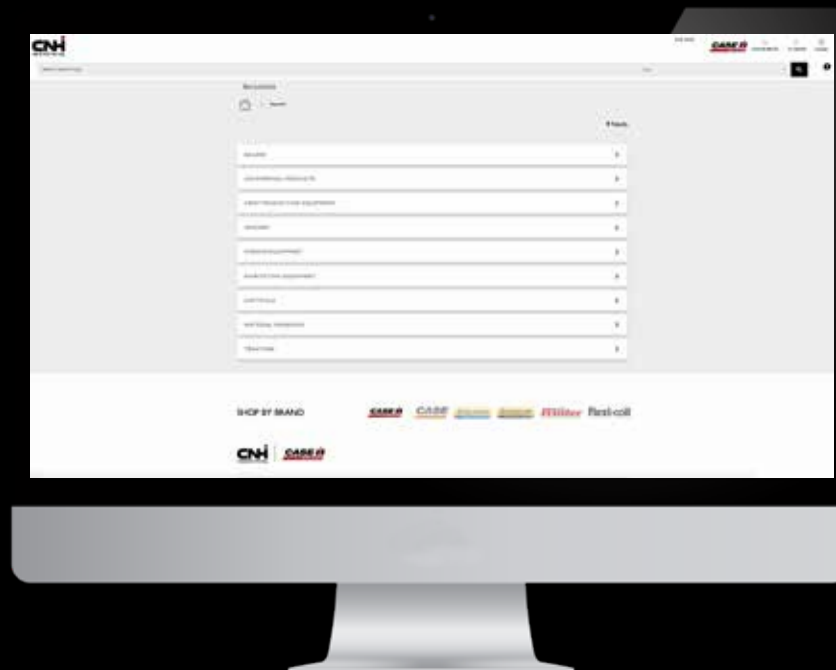
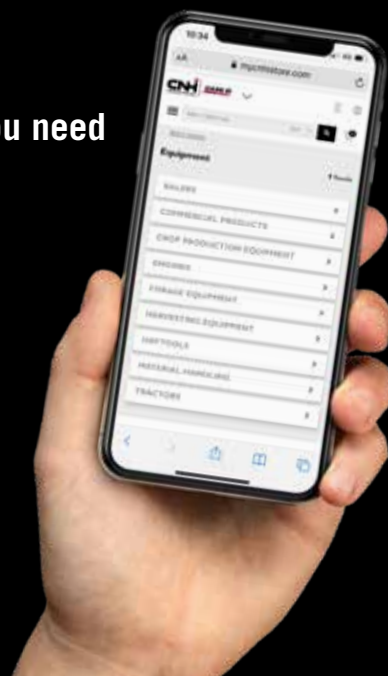
NEED A PART NUMBER?

You can now find the exact part numbers you need for your equipment via the MyCNHiStore.

Search by part number, model or category.

Click here for to find all
the parts you need, fast!

CLICK
HERE



GET AHEAD OF THE FIELD

AUSTOFT 9000

The highly anticipated Austoft 9000 Series is setting the bar for sugarcane harvesting. You can experience the power and cutting-edge technology yourself through our virtual tour. With increased harvesting capacity, industry-leading design, superior data capture and fuel efficiency, discover why it's fields ahead of the rest.

Take the Virtual Tour.

CLICK
HERE



THE NEW **AFS CONNECT** FAMILY:

Freedom to connect and configure the way you want.

WHEELED

High-horsepower row crop tractors deliver industry-leading fuel efficiency for maximum productivity. With reliable power, advanced hydraulics and an industry-best turning radius, no job is too tough.

Available on all AFS Connect Steiger models.



ROWTRAC

When traction and agronomic advantage are essential to your operation, the AFS Connect Steiger® Rowtrac™ tractors are the right choice. These tractors offer different track spacing ranging from 2-3m with 18, 21, 24 and 30 inch track width options available.

Available on the AFS Connect Steiger 400, 450 and 500.



Farmers and contractors alike will find a fit for their operations in the power and versatility of the five models and 27 configurations of AFS Connect Steiger tractors. As the leader in 4WD industry innovation, this lineup is ready for handling large-scale planters and tillage tools, moving tons of earth and operating nimbly between emerging crop rows. That's what it means to be Steiger Strong — a combination of power, performance, flexibility and superior operator comfort that is unequalled.

QUADTRAC

More than 20 years of industry-leading track technology can be found in every AFS Connect Steiger Quadtrac® tractor, which features four individually driven, positive-drive oscillating tracks.

Available on the AFS Connect Steiger 450, 500, 550, and 600.



OPTUM

With its powerful yet efficient engines up to 313 horsepower, the continuously variable CVT drive transmission and its compact size, the Optum has set new standards for high-performance tractors.

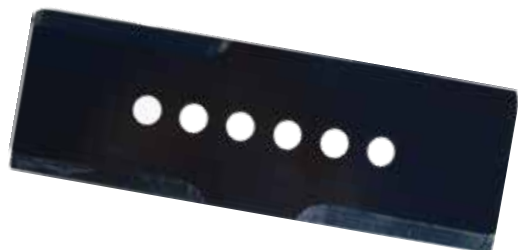
Available on AFS Connect Optum Models.

*It's so new, we don't even have pictures yet!
Overseas models shown.



CANE HARVESTER BLADES AND DISCS

Base-Cutter Blades, Chopper Blades, Base-Cutter Discs and Extractor Blades



BASE-CUTTER BLADES

- Premium wear resistance.
- Delivers superior wear and fracture resistance.

Part Number	Thickness	Description
87084600	4 mm	Double ended 4 hole
448926A1		Double ended 6 hole
86902700		Single ended 7 hole
448928A1	5 mm	Double ended 6 hole
87240599		Duratech 6 hole L/H
87240600		Duratech 6 hole R/H
87224209		Single ended 7 hole
86902900	6 mm	Double ended 4 hole
86983508		Duratech single ended 6 hole L/H
86983509		Duratech single ended 6 hole R/H
86902800		Single ended 7 hole



CHOPPER BLADES

- Premium quality steel.
- Optimum heat treating.
- Exacting specifications for the perfect cut.

Part Number	Length	Description
47430491	847 mm	65mm wide
87247931		65mm wide - hard
87249391		95mm wide
87247932		95mm wide - hard
87245933	540 mm	65mm wide - 4 slots (suits A4000)

Maximise Sugarcane harvesting with the right blades. In order for sugarcane to regrow, cutting it with the least amount of damage to the stem is critical. Some suppliers use thickness to overcome inferior steel or poor manufacturing processes. Our blades are made from high-quality steel and are produced to precise, quality-controlled specifications. Our blades are designed to maximise wear life, reduce machine downtime in the field and deliver superior wear and fracture resistance.



BASE-CUTTER DISCS

- Laser cut for precise fit.
- Premium wear resistance.

Part Number	Style	Description
87239448	Flat	565 mm dia - plain
87244040		565 mm dia - hard faced
87249375	Curved	565 mm dia - plain
87242728		565 mm dia - hard faced
87254178		610 mm dia - hard faced
87247083	Scalloped	565 mm dia - hard faced

EXTRACTOR BLADES

- Laser cut and weighed for correct balance.
- Premium wear resistance.

EXTRACTOR FAN BLADE SETS - PRIMARY (SET OF 3)

Part Number	Shape	Description
87231808	Original	4' Std - 465 mm - mild steel 6 mm
87254158		4' Std - 450mm - mild steel 6 mm
87255636		4' Std - 448 mm - mild steel 8 mm
87254829		4' Std - 450 mm - hard 6 mm
87256384	Intermediate	4' Int - 455 mm - mild steel 6 mm

EXTRACTOR FAN BLADE SETS - SECONDARY (SET OF 3)

Part Number	Shape	Description
87231810	Original	3' Std - 345 mm - mild steel 6 mm
87249341		3' Std - 330 mm - mild steel 6 mm
87254830		3' Std - 345 mm - hard 6 mm
87256385	Intermediate	3' Int - 335 mm - mild steel 6 mm
434322A1		3' Int - 330 mm - hard 6 mm
87252029	Rectangular	3' Rect - 330 mm - mild steel 6 mm

BLADES SUIT AUSTOFT ANTI VORTEX SYSTEM

Part Number	Description
444825A1	Fan blade set (4) suit Austoft anti vortex - ms
87412861	Fan blade set (4) suit Austoft anti vortex - 15 mm - ms
87423999	Fan blade set (4) suit Austoft anti vortex - 25 mm - ms
73322623	Fan blade set (4) suit Austoft anti vortex - 15 mm 8 mm hard
87463453	Fan blade set (3) anti vortex - style 4' & 4 6" systems 6 mm hard

UNDERCARRIAGE COMPONENTS

Case IH can offer the widest choice of original equipment undercarriage components for your Cane Harvester.



TRACK SHOES

- Hot rolled, cast and hot forged shoes.
- Variable width, mud holes, clipped corners, chamfered holes.

IDLERS

- Cast, forged and fabricated types.

ROLLERS

- Single flange, double flange and inner flange rollers.

SPROCKETS

- Weld-on rim, bolt-on rim, full hub and segmented type.
- 3,4,5 and 6 teeth segments.

TRACK CHAINS

- Lubricated chains.
- Heavy Duty version.
- Suitable for 8800 and 7700 Case IH Harvesters.

Part Number	Description
84176266	Sprockets
87756124	Chain
87578427	Sliding Pads
00131407	Single Roller
322582000	Track Roller
76606043	Track Roller
135832B	Idlers

ELEVATOR CHAINS

Heavy-duty elevator chain assemblies.

- We offer a complete selection of elevator chains for all Case IH cane harvesters.
- These heavy-duty roller chains feature a pre-lubed chain that reduces break-in wear and heavy-duty rubber paddles.
- #550 conveyor chain with heavy-duty rubber paddles to move material efficiently.



ROLLER CHAINS

Excellent wear resistance with a long, reliable working life.

Still without doubt manufacturing the world's finest specification roller chain, Renold provides chain solutions for hundreds of applications coping with operating conditions that are hot or cold, wet or dry, dusty or requiring cleanliness. All of these solutions combine excellent wear resistance and fatigue resistance with a long, reliable working life. Working with Renold gives you access to a total care package for all your chain requirements.

The Renold precision steel roller chain is a highly efficient and versatile means of transmitting mechanical power, which, in the field of industrial applications, has almost completely superseded all other types of chains previously used.

All chains are classified according to pitch (the distance between the centres of adjacent bearing pins), roller diameter and width between inner plates.

Collectively, these dimensions are known as the gearing dimensions, as they determine the form and width of the sprocket teeth.

RENOLD SD - THE NEW "STANDARD" IN THE ECONOMY CATEGORY OF CHAIN

If you are looking for a good quality product from a reliable supplier for "standard duty" chain applications, look to Renold SD, the new benchmark in the economy chain category.

The Renold SD range offers:

- an extensive product line of European (BS), ANSI and DIN standard chains
- consistent quality.

RENOLD ANSI XTRA CHAIN - THE "HEAVY DUTY" CHAIN

Renold ANSI Xtra chain incorporates the usual Renold performance enhancing features including seamless bushes, ball drifted plate holes, shot peening and optimum interference fits.

The Renold ANSI Xtra range consists of:

- **H RANGE** - Identical to standard Renold ANSI chain with the exception of the overall width. Thicker plates give this chain excellent resistance to heavy loads and help absorb shock. Duplex (2-strand) and triplex (3-strand) chain must have sprockets with an increased transverse pitch of the teeth.

- **V RANGE** - Identical dimensions to standard Renold ANSI chain but with a higher breaking load and excellent resistance to shock loads.
- **HV RANGE** - A combination of the 'H' and 'V' chain, giving excellent resistance to both heavy and shock loads.



RENOLD
Superior Chain Technology

COMBO-JET® SPRAY TIPS

Spray Smart. Get Better Results.

Optimise your spray efforts by balancing coverage and drift.

Keep your crops healthy and protected against harmful plant diseases and pests with Case IH high-performance nozzles. Designed to maintain even coverage and reduce the risk of spray drift, our selection of nozzles includes a range of spray patterns and droplet sizes to work best for your crops and your land.

THE RIGHT DROPLET SIZE. THE RIGHT SPRAY TIP. THE RIGHT RESULT.

Spraying isn't just about litres per hectare. To get the most effective application and minimise spray drift you need to ensure you have the right spray nozzles operating at the proper pressure, producing the desired droplet size.



Why is droplet size so important?

- The trade-off, coverage vs. drift. Generally speaking, smaller droplets deposit on the target more effectively than larger droplets and larger droplets will drift less.
- An additional consideration is that certain chemicals are more effective when applied with a specific droplet size.
- The challenge with spray tip selection is to pick a tip-cap that gives you an optimal combination of coverage and drift control over the full spraying speed range.

THE COMBO-JET® ADVANTAGE:

- Stainless steel tip is a permanent part of the cap.
- Snap-in strainer is longer, with 40% more area to reduce tip plugging, and can be cleaned without removing from the tip-cap, which reduces the potential for debris dislodged during cleaning to plug the tip.
- The strainer snaps in and out, while the seal and spray tips stay in place so you only have one part to handle instead of four.
- The tip-cap, strainer and seal stay assembled when you change nozzles which makes them much easier to clean and handle, especially with gloves. Safer too!
- Drift control models (SR, MR, & DR) utilise a closed chamber design which doesn't rely on air entrapment, so there is no air hole to plug.
- Radialock cap design secures cap in place, so it is less likely to get knocked off and it doesn't over-compress the seal.

FOR MORE INFORMATION ON OPTIMISING SPRAY APPLICATION AND FOR PRODUCT AVAILABILITY CONTACT YOUR CASE IH DEALER.

CLOSED CHAMBER DESIGN ADVANTAGE

COMBO-JET® ER, SR, MR & DR Droplet Size Selective Tip-Caps

Allows you to match droplet size to your application optimising coverage and drift control for the full spraying speed range. The COMBO-JET ER, SR, MR and DR series are available in flat fan 80 and 110 degree models to let you choose the spray droplet size and angle that best suits your application.

EASY-TO-HANDLE SPRAY TIP CLEANING

SR, MR, DR & UR SERIES



To clean stainless tip

Pull strainer
(with pre-orifice)
up and out



To clean plastic pre-orifice

Push strainer
sideways to
release from
pre-orifice

ER SERIES



To use/replace strainer

Pull strainer
(with pre-orifice)
up and out



To remove strainer

Push strainer
sideways to remove

SIMPLE AS THAT.

COMBO-JET® SPRAY TIP-CAPS

The COMBO-JET® ER, SR, MR, DR series tip-caps utilise a unique closed chamber design to create larger droplets that reduce drift. Adjusting the size of the pre-orifice and the exit orifice creates larger or smaller droplets, with the same flow rate.

The ER, SR, MR, DR and UR series models each produce a different droplet size range so you can choose the level of coverage and drift control you would like. The major advantage of the closed chamber design is that it doesn't require an external air hole, which is susceptible to plugging.

THE COMBO-JET ADVANTAGE

40% longer strainers
that snap into place

Fits all nozzle bodies
[with available adapters]

Easier handling with
snap-in design

Easy to read cap label
(MR110-06 = MR Series,
110 tip, 0.6 USGPM
flow rate)

Droplet size selective
tip options

Permanent stainless
steel tip

SR	MR	DR	UR
50%	75%	90%	90%+

Drift Reduction Series

Not air induction, so
spray tips work with
PWM

Cap colour matches
ISO flow rates

The best tips for pulse width modulation systems*
(e.g. Case AIMCommand®, Raven Hawkeye and more).

COMBO-JET® tips use a modern pre-orifice and closed chamber design that produces significantly less drift, while creating solid mass droplets, for maximum spray velocity and more meaningful droplets.

Without needing consistent air induction for controlling drift, Combo-Jet spray tips have become the preferred tip for Pulse Width Modulation (PWM) spraying systems.

GENUINE LUBRICANTS



NO. 1™ ENGINE OIL

As a safeguard against premature wear, our genuine No.1 Engine Oils™ have been specifically engineered to new, next generation MAT 3571, 3572, 3622 specifications. Our oils have been extensively tested to provide maximum protection in oxidation and aeration control, shear stability and proven performance life for the heavy-duty, high temperature operation of agricultural and other off-road diesel-powered equipment.



No.1 Engine Oil™ SAE 10W-40 API CK-4 MAT 3571



73394542 73394624 73394541

No.1 Engine Oil™ SAE 15W-40 API CK-4 MAT 3572



73394619 73394620 73394536 73394537

No.1 Engine Oil™ Super SAE 15W-40 API CI-4 MAT 3622



73394622 73394623 73394533 73394534

Lube Lookup is an online resource to assist in identifying the lubricants and volumes required for Case IH equipment.



What does the MAT number on your oil container mean?

The MAT designation on your oil container is what differentiates it from the competition. It certifies that genuine Case IH engine oils have passed our series of stringent, internal tests. The internal technical standards that are applied in testing go above and beyond the minimum API requirements – demanding more from our products. As a result, MAT specifications are used to test and approve all lubricants to ensure they exceed industry standard, meet the demands of machines and help extend component life.

That's why the Case IH choice for oil is documented in the operator's manual and approved for warranty claims. Only those MAT specified oils can make that claim.

QUALITY THAT YOU EXPECT

Tested, vetted and ready to revolutionise the industry

Increased performance means engines are running at higher temperatures and require high-performance lubricants to protect engine components from premature wear.

Overseas model shown.

HY-TRAN® HYDRAULIC TRANSMISSION OIL - PREMIUM

With advances in technology, Case IH remains at the forefront with the newly improved Hy-Tran® Hydraulic Transmission Oil - Premium. This oil is designed to keep tractor transmissions, axles and hydraulic systems free from deposits while inhibiting wear, corrosion, sludge and foaming.



Hy-Tran® Hydraulic Transmission Oil - Premium



73394639



73394634



73394521



73394522



UNIVERSAL TRANSMISSION OIL - PREMIUM

Designed for use in transmissions, hydraulic systems, oil immersed brakes and other ancillary systems fitted to agricultural, construction and off-road equipment.

Excellent anti-oxidation, shear-stability, anti-wear, anti-corrosion and anti-foam characteristics result from the use of the latest additive technology leading to greater reliability and reduced downtime.



Hy-Tran® Hydraulic Transmission Oil - Premium



73323224



73394644



73394527



73323225



GENUINE LUBRICANTS



HYPLOID GEAR OIL 80W-90

Our Hypoid Gear Oil formula is designed to help prevent deposit formation and maximise oil drain intervals without compromising on protection. Our genuine gear oil contains a unique additive package, developed specifically for our machines to keep your equipment operating at it's peak performance.

Gears in agriculture equipment are subjected to immense pressure which without the proper lubrication, can lead to breakdown in the lubricant film resulting in scuffing at high temperatures. The unique formulation in our genuine gear oil is designed to withstand the extreme temperature and pressure of agriculture applications to sustain a long-lasting lubricant film between the gear sets to prevent the dry contact between surfaces which leads to premature wear.

By using only genuine gear oil, your differentials and gear sets are better protected for increased performance under extreme pressure and extended equipment lifetime.

Features and Benefits:

- High load capability, anti-wear and extreme pressure properties extend equipment life
- Reduces maintenance costs under severe conditions
- Thermal and oxidation stability extends seal life and increases service life of equipment and lubricant

Hypoid Gear Oil Extreme Pressure SAE 80W-90 MAT3516-A



73394648

Hypoid Gear Oil Extreme Pressure SAE 85W-140 -MAT3516-B



73394574



73394575





OAT EXTENDED LIFE COOLANT

For use in tier 4 final/stage V and back.

This long service life coolant/antifreeze is based exclusively on a synergistic combination of Organic Additive Technology (OAT), providing excellent overall corrosion protection. Suitable for all heavy/light duty diesel, natural gas and gasoline engines, this formulation is approved by our engineers under the new next-generation MAT 3724 specifications and provides superior high temperature protection in extreme conditions.

It protects cooling system metals including brass, copper, solder, steel and cast iron against rust, corrosion, and deterioration, and also fights against deposit build up and cylinder liner cavitation.



OAT Extended Life Coolant/Antifreeze - Premix MAT 3724


73394595


73394604


73394594



GREASE

Our grease is formulated with numerous additives to enhance and maintain consistent performance against high temperatures and extreme pressure.

This includes:

- antioxidants
- anti-wear
- extreme pressure additives
- friction modifiers
- dyes
- anti-weld and solid.



Multi-Purpose 251H EP Grease Anti-Wear/NLGI 2 MAT 3555-A


73394600


73394601

GENUINE FILTERS



ENGINE OIL FILTERS

DID YOU KNOW?

Our genuine engine oil filters:

- are 70% more efficient in filtering critical contaminants using our MicroLoc™ synthetic media compared to paper-based media
- allow filtered oil to reach the engine quicker with improved cold flow
- deliver high soot tolerance and dirt-holding capacity for greater filter life.

For best performance, always use with genuine engine oil.

THE 30-60-90 HORSEPOWER RULE

Off-road equipment generates more usable horsepower – 30% more than on-road trucks and 60% more than automotive engines. Tighter tolerances and higher temperatures than ever before result in severe duty cycles. Therefore, off-road engines require high-quality filtration and increased durability.



30%
HORSEPOWER
USAGE



60%
HORSEPOWER
USAGE



90%
HORSEPOWER
USAGE

FUEL FILTERS

DID YOU KNOW?

As fuel travels through a typical fuel system, it picks up dirt and water. A typical litre of fuel can contain over five million contaminants.

Few things impact equipment productivity faster than a low-quality fuel filter.

Extremely high injection pressures and tight tolerances of today's low-emission engines make them highly sensitive to even the smallest amount of water or contaminants. With pressures as high as 30,000 psi, contaminants act as an abrasive jet, capable of eroding fuel pump and injector surfaces.

CASE IH ADVANTAGE

Today's tier four certified engines require fuel to be 100x cleaner than engines built just a few years ago.

Our genuine fuel filters feature advanced design and go through extensive testing to optimise equipment protection and performance.

- MicroLoc™ synthetic media delivers high-efficiency filtration that removes up to 99.7% of contaminants.
- 2x more dirt holding capacity extends the service life of your equipment.
- Offers better injector and fuel pump protection by eliminating more contaminants than competitor filters.
- Patented self-venting drain valve on fuel/water separators dramatically improves removal of free and emulsified water.

As fuel travels through the typical supply chain, it picks up dirt and water that is harmful – or even deadly – to your engine.





ENGINE AIR FILTERS

DID YOU KNOW?

A typical diesel engine requires more than 3,000 litres of clean air for every litre of fuel it burns. The better an engine can breathe, the better it can work.

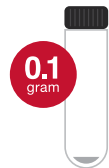
Case IH works diligently to specify particular filter requirements.

- Filter media, materials, seals and design features are engineered specifically for the machine to which they are fitted.
- As an example, one of our flagship platforms has 42 different air cleaner filter specifications associated with design and performance.
- Will-fit filters do not integrate with whole machine performance system design.
- Initial savings with a will-fit filter may end up costing you much more when repairs are needed.

CASE IH ADVANTAGE

It only takes a few grams of dirt to dust an engine.

Compare how much dust can pass through an air filter during 500 hours of operation.



CASE IH MICROLOC™ FILTERS

MicroLoc filter media
99.99% efficiency.



CASE IH STANDARD FILTERS

Standard filter media
99.9% efficiency.



AFTERMARKET FILTERS

Standard filter media
99% efficiency.



HYDRAULIC FLUID FILTERS

DID YOU KNOW?

Hydraulic pumps are sensitive to contaminants as small as 10 microns – that's 10x smaller than a grain of table salt.

Without proper filtration, equipment can experience:

- slips
- rough shifts
- brake system chatter
- critical failure of internal components, such as excessive gear wear.

A vast majority of hydraulic component failures are caused by dirt particles.

Up to 70% of these failures can be prevented with proper filtration.

Only genuine hydraulic filters have up to a 99.9% efficiency at a lower micron rating compared to the competitor.

For best performance, always use genuine hydraulic transmission fluid when recommended by the operator's manual.



CASE IH ADVANTAGE

FILTER	CAPACITY (G)	GENUINE PARTS ADVANTAGE	AVG. PRESSURE AT FAILURE (PSID)	GENUINE PARTS MIN. SPEC (PSID)	ADVANTAGE
Competitor	130	48% greater capacity	189	200	26% stronger
Case IH Genuine Parts	193		239		

Results from a field test of genuine filter (84226263) versus competitor filter (ISO 16889).

NEXPRO PARTS

Quality you can trust



When replacing the wear parts on your sugarcane harvester, look no further than NEXPRO for high-quality, durable parts. With a large range of filters, seals, seal kits, o-rings and blades, NEXPRO parts are affordable without diminishing their reliability and performance.

NEXPRO parts are backed by our seal of approval to ensure optimal uptime for your equipment.



NEXPRO

GENUINE DRIVE BELTS

Why choose Genuine belts?

Our belts are specially designed by our engineers to meet the strict standards of each machine. This specialisation in our belts is just one of the defining factors that makes them superior to other non genuine options.

Our suppliers are chosen via a rigorous selection process that ensures we work with market leading companies, selected for their advanced technology and the high quality of the material used.

Our genuine belts are specially developed for heavy duty drives on farming machinery. They are robust and reinforced, composed of materials that are both very flexible and resistant, specific elastomeric compounds and highly resistant cover bands.

Aftermarket cooling power transmission and cooling components

DESIGNED TO PERFORM

This season, choose agricultural belts that are designed to perform under the toughest working conditions. Dayco offers an extensive range of agricultural replacement belts for heavy-duty power transmission applications. Dayco's high-quality transmission belts will withstand the dust, dirt, stones, and other objects that may enter between the belt and the pulley. Do not be deceived by the small size of their tensioners, as they can support significant additional loads and are developed for heavy-duty drives on farming machinery. Dayco also design their transmission belts with the harshest of Australian climates in mind, ensuring that they maintain their shape in hot working conditions.

Product range includes:

- heavy-duty belts
- gold label poly rib belts
- top cog gold belts
- label No Slack™
- heavy-duty belt tensioners
- gold label hoses.



PROTECT YOUR UPTIME AND YOUR HARVEST

Gates' agricultural belts, hoses, and hydraulic solutions will give you the power and precision you need to make the most of this year's harvest. Gates is a leading manufacturer of high-quality and heavy-duty belts for the automotive, industrial, and agricultural markets. Gates consistently delivers superior performance because they only use the best materials and manufacturing processes. Their worldwide customer base stems from their advanced belt technology, product development policy and innovative design procedures.

As an industry-leading supplier of OE-Exact agricultural and grounds maintenance equipment, you can trust Gates to perform throughout this season.

Product range includes:

- conventional wrapped belts
- light-duty power rated belts
- blade runner belts
- micro-v belts
- fleet runner v-belts
- powerated belts
- Truflex v-belts.



GENUINE ENGINES

Our engines are at the forefront of technology. The tasks in a farm are varied and sometimes very complex, but nothing is impossible with the right technology on a tractor if powered by one of our genuine engines. Depending on the requirements of the mission, they can adopt variable-geometry and two-stage turbochargers, high-pressure common rail injection, patented after-treatment systems and more.

Our genuine engines have been vigorously tested and improved to exceed growing requirements in performance and efficiency, while complying with stricter emission regulations.



Part Number	Application
51450396	8800 cane harvester single row my 2017 tier 3
47933971	8800 cane harvester tier 3
5801425055	Puma 170, 185
5801793848	Magnum 280, 310, 340, 380
5801875809	Maxxum 150 114kw
5801875766	Maxxum 150 NEF 67

MAGNAPOWER™ BATTERIES

Made for Australia's toughest environments

Did you know?

The number one killer to all batteries is vibration. Extended vibration can crack battery welds and plates, causing electrical shorts. Another leading cause of battery failure is exposure to high temperatures which can result in batteries discharging more or undergoing sulfation (the crystallisation of lead sulfate) which reduces the batteries ability to charge.

What is the benefit of using a premium battery for my equipment over a standard car battery?

MagnaPower™ premium batteries are built for the harsh conditions agriculture equipment is exposed to when bouncing across a field or job site. MagnaPower™ batteries also contain larger and heavier lead connections than typical off-the-shelf batteries. They utilise a unique epoxy bonding design to secure the internal grids to prevent shorts caused by excessive vibration and shocks.

How can you get the most out of your batteries?

In agricultural settings, batteries are often stored for longer periods of time (for example between seasons) and we would recommend investing in a professional charger to monitor the ongoing health of your batteries or should your battery need a kick start.

What makes MagnaPower™ batteries stand out from the rest?

- LifeGrid™ technology for consistent performance
- Large inter-cell connectors provide superior vibration protection
- Heavy-duty container for maximum durability
- Epoxy anchor bonding for improved strength



Talk to your Case IH dealer for more information on our extensive range of batteries for passenger vehicles, SUV/4WD/light commercial vehicles, heavy-duty trucks, motorcycles and marine applications.

MAINTENANCE SOLUTIONS

GLASS CLEANER - 547 ml

Part Number: ZRG018GLC

Clean, shine and polish all glass and plastic surfaces. Leaves a clear streak-free finish.



BATTERY CLEANER - 340 g

Part Number: B505514

Amazingly easy way to remove corrosion from all battery parts. Use to neutralise acid and dissolve corrosion from terminals, cable, hold-downs and boxes.

Recommended for all tractors, harvesters, forage and industrial, construction equipment batteries. The colour change indicates when the cleaning is complete. No guesswork involved.



INDUSTRIAL-STRENGTH RUST PENETRANT - 350 ml

Part Number: B505501

Penetrates to loosen rusted nuts and bolts quickly. Protects against rust and corrosion. Penetrates and lubricates.

Suggested applications: construction equipment, farm equipment and industrial machinery.



BRAKE PARTS CLEANER - 500 ml

Part Number: ZRG017BRC

Non-chlorinated formula specially designed to completely clean all metal brake parts of grease, oil and brake fluid residue. Loosens brake dust for easy removal.

Suggested applications: brakes, tools and equipment.



BATTERY SAVER - 340 ml

Part Number: B505515

Provides a protective coating that prevents the formation of damaging corrosion. Keeps dirt and other contaminants from interfering with the flow of power. Prolongs battery, cable and clamp life. Recommended for use with CNH Battery Cleaner.



PENETRATING OIL - 350 ml

Part Number: B505502

Loosens rusted parts. Prevents corrosion on tools and other parts. Dries out wet engine parts. Stops binding and squeaks.



ELECTRICAL CONTACT & PARTS CLEANER- 326 g

Part Number: B505513

Fast-evaporating, heavy-duty cleaner removes oil, grease and other contaminants from electrical parts and mechanical equipment. Can be used on hard surfaces including metal associated with electrical and electronic parts. Use as a final wash before assembly – improves gasket, sealant and paint adhesion.

Suggested applications: switches, relays, motor controls, connectors and sensors.



SURFACE CLEANER - 326 g

Part Number: B505511

Fast evaporating cleaner quickly removes oil and grease from metal parts and surfaces. Will not cause corrosion.

Suggested applications: use as a final wash before assembly. Improves gasket, sealant and paint adhesion. Cleans hand tools. Cleans power transmission chains. Cleans oily engine parts. Dissolves motor oil residue. Cleans paint from spray gun.



Whether you're looking for cleaners, sealants or adhesives, you can trust Iron Gard products from Case IH to deliver the solutions you need.

ANTI-SEIZE LUBRICANT - 350 ml

Part Number: B505504

A high-performance lubricant that keeps parts free from seizure due to high heat or corrosive environments. Reduces galling of press fitted parts.

Suggested applications: exhaust fasteners, turbo charge fasteners and wheel nuts.



PREMIUM STARTING FLUID - 312 g

Part Number: ZAD4

Full 70% ether content for quicker engine starts. For use with petrol and diesel engines. Extends starter and battery life with quicker starts. Contains upper cylinder lubricant and corrosion inhibitor. For use on trucks, tractors and construction equipment. Not for use with pre-heat manifolds or glow plugs.



CHAIN & CABLE LUBE - 350 ml

Part Number: B505500

For use on construction and agricultural equipment. Helps protect against rust and corrosion. Fast penetrating action. Reduces chain wear. Resists high temperature breakdown. Heavy viscosity reduces throw-off. Increases life of chain and cables.



HEAVY DUTY SILICONE LUBRICANT - 325 ml

Part Number: B505503

Superior lubricant that weather-proofs and protects. Works on metals, rubber and canvas. Reduces friction.

Suggested applications: lawn mowers, wood drawers, sliding doors and windows.



GRAPHITE LUBRICANT NON-STICK - 325 ml

Part Number: 407408R1

Non-Stick Graphite lubricants can be sprayed brushed or rolled onto any metal or wood surface to reduce sliding friction. Can be used as a lubricant on chains, sprockets, hitches, over-head door tracks, winches and hinges.

Use Non-Stick Graphite for seed drum seal wearing ring and market alternator of planters.



WHEEL BEARING GREASE - 454 g

Part Number: B505497

Composed of EP Grease. Acid, salt and alkali resistant. Water resistant to keep parts lubricated. Formulated to withstand high temperatures.



RADIATOR STOP LEAK - 355 ml

Part Number: B505508

Helps seal small leaks quickly. Helps prevent new leaks. Stays safely in suspension until a leak occurs



THREADLOCKER RED - 36 ml

Part Number: ZPX26236

A high-strength adhesive to lock and seal large threads where lubricity for controlled torque tension is required. Apply to fasteners between 3/8" and 1" in size before assembly. Disassemble while hot (230°C).



BLACK RTV SILICONE ADHESIVE SEALANT- 85 g

Part Number: ZPX81158

An all-purpose RTV silicone adhesive/sealant suited for a wide variety of indoor and outdoor sealing, bonding and weatherproofing uses. Cures into a flexible sealant that will not harden or crack over time.



ANAEROBIC GASKET MAKER - 50 ml

Part Number: ZPX51850

Ideal for on-the-spot and emergency repairs, or when a conventional gasket is not available. Seals to 149°C, fills gaps to 1mm.

Can be used on a variety of metal surfaces including aluminum. Forms a flexible, solvent-resistant gasket.



HIGH-TEMPERATURE THREAD SEALANT - 50 ml

Part Number: ZPX59250

A high-performance sealant that seals threaded metal fittings instantly. Lubricates for easy assembly and cures to lock against vibration loosening. Outperforms Teflon tape, will not shred.



MAINTENANCE TOOLS

Sow the benefits

CABLE TIE PACKS

- Assorted Colours – Blue, Green, Yellow, Pink, Orange

Part Number	Length	Colour	Pack Qty
TDCTP31	200 x 4.8mm	Assorted colours	100
TDCTP32	300 x 4.8mm	Assorted colours	100
TDCT154BKCD	150 x 4mm	Black	100
TDCT205BKCD	200 x 5mm	Black	100
TDCT305BKCD	300 x 5mm	Black	100
TDCT408BKCD-100	400 x 8mm	Black	100
TDCT559BKCD	550 x 9mm	Black	25
TDCT759BKCD	750 x 9mm	Black	25



CABLE TIE ASSORTED PACK

Part Number: TDCTP07

- Assorted pack for a variety of applications
- Red - 100mm x 2.5mm
- Yellow - 100mm x 2.5mm
- Blue - 100mm x 2.5mm
- Black - 150mm x 2.5mm
- Natural - 150mm x 2.5mm
- Pack Qty: 500



CABLE TIE COMBO PACK

Part Number: TDCTCP10

- Contains 1000 popular black cable ties in assorted sizes
- 3 x 100mm (Qty 200)
- 4 x 150mm (Qty 200)
- 5 x 200mm (Qty 400)
- 5 x 300mm (Qty 200)

BULK HOSE CLAMP PACK includes plastic carry box

Part Number: TDMP125

- Multi-purpose stainless steel part
- Solid band clamp
- Covers ranges: 11 - 70mm
- 125 clamps



DOUBLE EAR CLAMP PACK

Part Number: TDTEC300

- Suitable for use on compressed air, gas and liquid lines
- All popular sizes
- 300 hose clamps with pinching plier



HOSE CLAMP PACK

Part Number: TDCVP82SS

- Corrosion resistant
- Covers ranges: 6 - 51mm
- 82 clamps
- Perforated full stainless steel



RUBBER LINED CLAMP PACK

Part Number: TDTRLC90K

- For pipes, cables, groups of cables, hoses etc
- Removable rubber lining
- Covers sizes 3.2 - 17.5mm
- Contains 90 rubber lined clamps



HOSE CLAMP PACK

Part Number: TDCVP82

- General purpose clamp
- Covers ranges: 6 - 51mm
- 82 clamps
- Perforated stainless steel part



MAINTENANCE TOOLS

Workshop tools

DIESEL INJECTOR PORT CLEANING KIT

Part Number: TL304052

- Cleans injector ports and seats prior to new injector installation
- Features reusable plugs to prevent contaminants and debris from falling into cylinders during intensive cleaning process
- Includes various size brushes and attachments for deep cleaning

CROWFOOT WRENCH SET 3/8"

Part Number: TL321265

- Metric flexible flare type crowfoot wrench set suitable for automotive, industrial and engineering applications
- Flexible head allows 200° of movement
- Suitable for hydraulic, fuel, air and brake fluid lines to avoid rounding the nut

BOLT CUTTERS

- Suitable for general purpose use with soft and medium metal applications only
- Slim head centre cut jaw design enables close surface cutting

Part Number	Length
TL316002	450mm 18"
TL316004	750mm 30"
TL316005	900mm 36"



COOLING SYSTEM FLUSHING GUN PNEUMATIC

Part Number: TL308239

- Provides high-pressure cleaning of radiators and heater cores
- Simply connect air line and water supply and pull trigger
- Essential tool for complete flush of cooling system from old coolant, dirt, rust and scale
- Size: Ø 19, 29, 32, 37, 40mm



FAMOUS
TOLEDO

KNIPEX COBRA® XS 100MM

Part Number: TK8700100

- Grips like a big tool: The smallest water pump pliers in the world with full functional capability
- Optimum access in the narrowest spaces: an especially compact design with a very slim head



PLIERS WRENCH XS 100MM

Part Number: TK8604100

- Optimum accessibility, even in confined spaces: particularly compact design, very slim head
- One-handed fine adjustment by pushing for the simplest adjustment to different workpiece sizes



HIGH LEVERAGE DIAGONAL CUTTERS

- High cutting performance with minimal effort
- For very tough, continuous use



KNIPEX CUTIX UNIVERSAL KNIFE

Part Number: TK9010165BK

- The innovative and variably extended stabilisation bar allows for versatility, precision and faster cutting
- Exert targeted pressure on the back of the blade without risk of injury, no unintentional bending or breaking of the blade



Part Number	Med Hard	Hard	Piano	Length
TK7402180	3.8mm	2.7mm	2.2mm	180mm
TK7402200	4.2mm	3.0mm	2.5mm	200mm
TK7402250	4.6mm	3.5mm	3.0mm	250mm



MAINTENANCE TOOLS

Battery essentials

12V BATTERY MONITOR

Part Number: MA98416

- DIY install in 2 minutes
- Bright colour coded LED's indicate battery voltage
- Fast, accurate and reliable
- Water and dust proof to IP67



BLUETOOTH® BATTERY MONITOR

Part Number: MA98415

- Real-time battery monitoring of up to four devices simultaneously
- Monitors can be combined for 24V, 36V and 48V systems (One monitor required per battery)
- Stores and displays historical data
- Tests vehicle cranking and charging systems



12/24V LITHIUM JUMP STARTER

Part Number: MA35000

- 12V/24V applications
- Automatic system voltage sensing
- 35,000mAh internal battery capacity
- LiFePO cells for extra safety and stability



BATTERY CHARGERS

- One step operation
- Fully automatic charging
- Maintains optimum battery condition



Part Number	AMP	Input	Output	IP65
AE120E	1.2	240 VAC, 50Hz	12VDC	No
AE300E	3	220-240 VAC 1A 50/60HZ	12VDC 3A	Yes

CLEANERS | LUBRICANTS AND PENETRANTS | PROTECTANTS | SPECIALTY

CRC's manufacturing of cleaners, lubricants, penetrants and other specialty products meet all the performance standards, certified to ISO 9001. Continually meeting this standard and gaining recertification reflects their ongoing commitment to quality and consistency.



AUSTRALIAN MADE FOR AUSTRALIAN SUPPLY



CLEANING SOLUTIONS

Making tough jobs seem easy

This season partner with brands that have been tried and tested in Australian conditions.

Formulated to provide superior results, this range of machinery and vehicle wash's, degreasers and hand cleaners will help ensure the job is done right.



CHEMTECH CT14 ENGINE & BILGE

A multipurpose, concentrated, water soluble, biodegradable, non-toxic, non-flammable degreaser that will not promote rust. Effectively converts oil and grease into water soluble products that do not contain hydrocarbons.



CHEMTECH CT18 SUPERWASH

Effectively removes dirt, mud, grease, oil film, soot and bugs. This super concentrated formula is safe to use on any surface.



PERMATEX FAST ORANGE

Deep cleans the toughest dirt without the use of harsh chemicals, petroleum solvents or ammonia that sting cuts. Fortified with aloe, lanolin and glycerin with a fresh citrus smell.



SEPTONE PROTECTA GRIT

Solvent based heavy duty hand cleaner with a highly efficient combination of hydrocarbon solvents, surfactants and natural pumice abrasive providing an exceptionally fast working clean.

FOR THE FULL RANGE AVAILABLE, VISIT YOUR CASE IH DEALER.



PRECISION FARMING

ISOBUS Technology

WHAT IS ISOBUS TECHNOLOGY?

ISOBUS technology allows computers, vehicles and implements — regardless of their brand — to “talk” to each other.

It's what makes “plug and play” possible across different brands. If a piece of equipment has ISOBUS, you can plug it into an ISOBUS Control Unit and get the same user interface (UI) and workflow, display to display, tractor to tractor.

For those with mixed fleet farms and several employees, ISOBUS can help keep operations running smoothly, as any operator can take any ISOBUS-capable tractor, plug the ISOBUS implement into it and begin working. They don't need to recall settings or do any additional setup because everything is loaded and ready to run, reducing downtime.



ISOBUS MIDI 3.0

Rethink control with the Midi 3.0, an ISOBUS ECU (electric control unit), that makes possible the management of various implements like sprayers, spreaders, air-carts and planters without the need for an additional display or controller in the cab.

The Midi 3.0 uses an ISO capable display that allows for standard rate control functionality. As an optional extra, the task controller application can be enabled to automate rate and section control or as applied mapping (subject to implement capabilities).

Features and benefits:

- One time setup with “plug-and-play” functionality
- Straightforward user interface
- Easily navigate and control multiple products, tallies, and sensor data
- Increase implement versatility, by making it ISOBUS compatible
- Use existing AFS Pro 700 or other ISOBUS compliant display
- Supports programming up to 12 sections or 10 + 2 fence nozzles



RETHINK PRECISION FARMING AND CONNECTIVITY

with the XCN display range

XCN-2050™

The XCN-2050™ huge 30.8cm HD colour touch-screen and customisable interface allows you to move and turn widgets on and off to meet your desired set-up. Driven by the familiar Android™ system, it offers stability and reliability within the same environment as mobile devices. Its rugged construction is designed to cope with the harshest environments.

- Rugged construction for everyday field use
- Easily transferred between vehicles
- Customisable tablet-like interface similar to your other mobile devices
- 30.8cm high-definition colour touch-screen display
- One integrated camera with support for an additional external camera
- Choice of configurations with Precision-IQ™ and FM-1000® Plus display software

Click here for the
XCN functionality
comparison chart

CLICK
HERE

It's your real-time farm management decision making tool in the cab.



PRECISION FARMING

Advanced farming systems AFS (AFS) and AFS Connect™

Deliver an integrated precision farming solution that supports high-efficiency farming by rethinking productivity to make the most of every season, soil and seed.

AFS gives you more control over every operation down to the square centimetre. Reduce waste, increase overall efficiency and uncover opportunities that turn potential into profit.

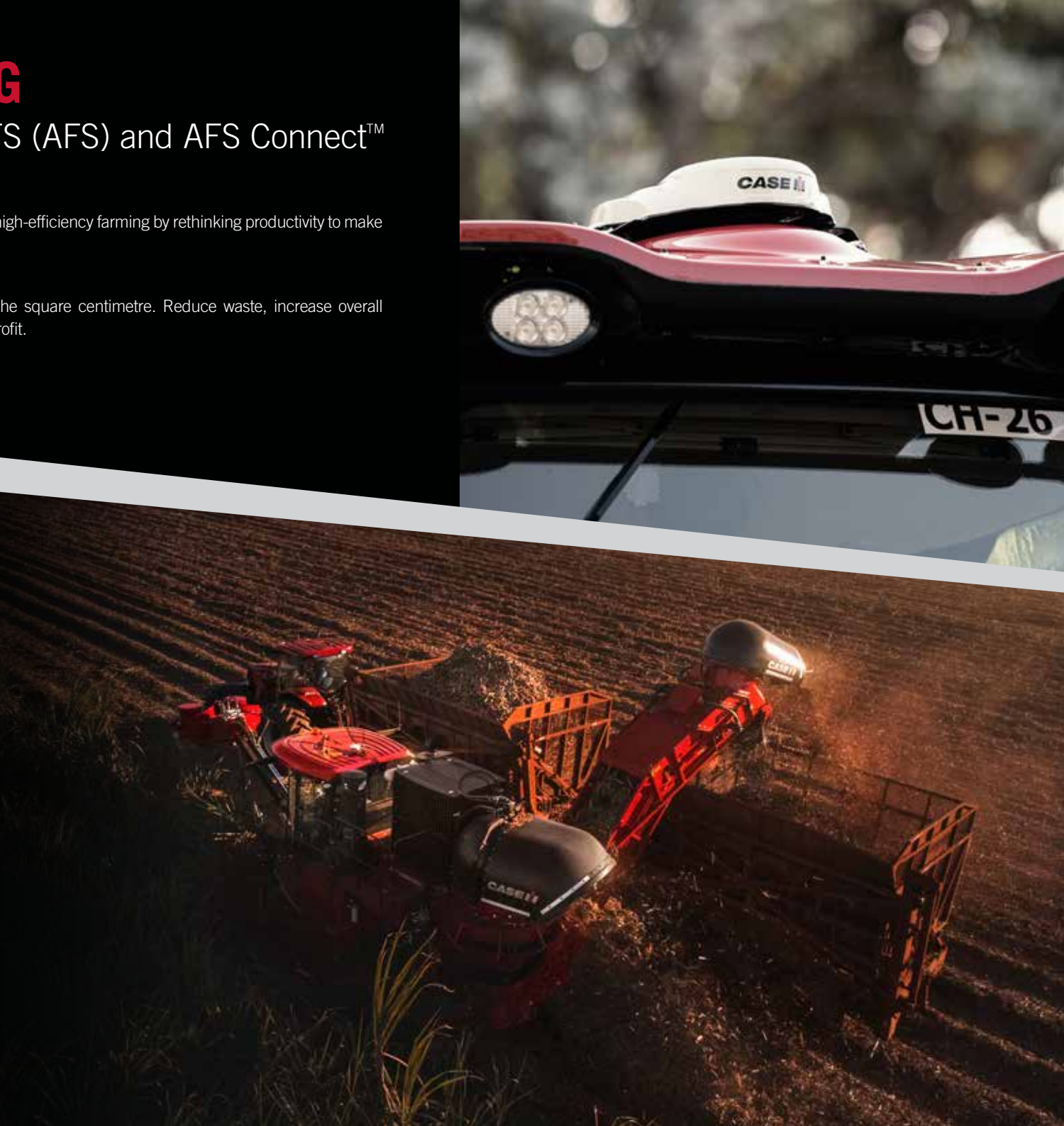


ADVANCED FARMING SYSTEMS

Advanced Farming Systems (AFS) is precision technology that improves productivity and agronomic performance while minimising waste.

It's how we define Case IH high-efficiency farming: optimising your time, resources and inputs to maximise returns on every acre. Built directly into your Case IH equipment, AFS delivers intuitive precision farming solutions that connect each phase of crop production into an interdependent system.

The result: precision down to the square centimetre that increases overall efficiency and maximises yield potential.





AFS CONNECT

Remotely monitor and manage your farm, fleet and data, enabling you to optimise your performance, productivity and flexibility.

- Farm Management: Optimise the seedbed for inputs, i.e. fertiliser and chemical placement, with tillage prescriptions based on soil types to drive maximum yield potential.
- Fleet Management: Coordinate machine logistics to efficiently manage refueling, refilling and maintenance during tight tillage windows.
- Machine Dashboard Monitoring: View machine speed remotely to ensure operator is staying within desired speed range.
- Vehicle and/or Implement Data Monitoring: Improve fuel efficiency by analysing machine performance data with a trusted adviser.
- Data Management: Share files from AFS Connect with your preferred providers to help you evaluate for next year.
- Data Sharing: Upload prescriptions from your agronomist directly to machines, and send as-applied maps wirelessly to a home office or agronomist.

AUTOGUIDANCE

Achieve year-to-year repeatable accuracy from sub-inch levels and beyond.

- AccuGuide™ autoguidance
- AFS RTK+
- AFS Corrections & Accuracy
- AFS 372 GNSS receiver

FIELD SOLUTIONS

AFS Field Solutions bring you the tools needed to gather data and address problem areas within your fields.

- AFS Harvest Command™
- AFS Soil Command™

Invest in your farm's future today with our 0% finance offer on advanced farming systems technology.



RAM® MOUNTS

Leader in mobile
mounting solutions

RAM® Mounts manufactures rugged and versatile mounting systems for precision farming displays, cameras, tablets, and other mobile devices that can be fitted on a wide range of vehicles and agricultural machinery.

With tractors, combines and other farm machinery now having up to five or more displays in a single cab, it can be difficult to mount monitors in a usable position. With the flexibility of the RAM® Mounts you can now mount all hardware with minimum vibration or movement.

Premium design

Quick installation, infinite adjustability and dampening for the most demanding environments.

Quality material

Mounting systems use powder-coated marine grade aluminium, lightweight high-strength composites and stainless steel hardware.

Customisable

Various solutions to fit your specific needs.

Reputation

RAM® Mounts solutions have been proven to last in agricultural environments for years.

UNIVERSAL MOUNT ADVANTAGES:

- Universal for a variety of devices
- Easy to install
- Bar mount provides customisable installation
- Protect your device during off-road work days

** iPhone and iPad are not included*



Ram® X-Grip® holder for 9" - 10" tablets
Compatible with ram-22U ball adapter

47762155



Kit, tablet mount assy

47762521



Kit, phone mount assy

47762523



Ram double socket arm C ball

87284257



Base plate 1.5" (3.81 cm) ball
AMPS round

87284258



U-Bolt base 0.75" (1.91 cm)
to 1.25" (3.18 cm) diameter

87284259



Color display arm

87386396



Sq mount ram

87386398



Arm assy C size

87645094



Suction mount base

48165853



Universal smartphone mount

ZAEBARPHONEMNT

Universal tablet mount

ZAEBARTABLETMNT



TRACKS

Continental Trackman® Rubber Tracks



TRACKMAN® ROWTECH™

Features 70% more tread rubber for greater damage resistance and improved ride quality.

Built with four layers of MAXXTUFF™ steel belting in the carcass – the highest concentration of steel belting reinforcement in the market.

Today's largest, most powerful tractors demand tougher track. That's why Case IH chose Trackman® to create the world's first positive-drive track. Trackman® continue to deliver ground-breaking innovations resulting in the most rugged track out there. Trackman® tracks handle more horsepower and deliver better traction to pull more weight. That means Trackman® can take on today's heaviest, most powerful tractors with total confidence.

WORLD'S STRONGEST DRIVE LUGS

ARMORLUG® ULTRA is the first patented drive lug with three fabric layers embedded in the lugs.

Easily handles today's biggest, most powerful tractors and is designed to take on more.

Lasts as much as 30% longer than any other positive-drive track and operators can work longer days.



Part Number	Application	Description	Width inches (mm)	Length inches (mm)	Tread Lugs	Lugs	Wire Plies	Carcass Thickness inches (mm)	Weight lb (kg)	Availability
51457436	Case IH Quadtrac®	Trackman® XP	30 (762)	252 (6400)	84	42	3	1.25 (31.75)	1058 (480)	April 2022
47826945		Trackman® XP and ARMORLUG®					4		1079 (489)	Available now
47801556	Case IH Rowtrac™	Trackman® RowTech™ and ARMORLUG®	18 (457.2)	264 (6705)	88	44	4		797 (362)	October 2022
47801558			24 (609)						1089 (494)	July 2022
47801559			30 (762)						1218 (553)	May 2022



Trackman

Outworks. Outlasts. Outperforms. **Out Here.**

WHAT'S MORE, THE ABOVE TRACKMAN® TRACKS COME QUALITY GUARANTEED WITH A STANDARD FOUR-YEAR WARRANTY.

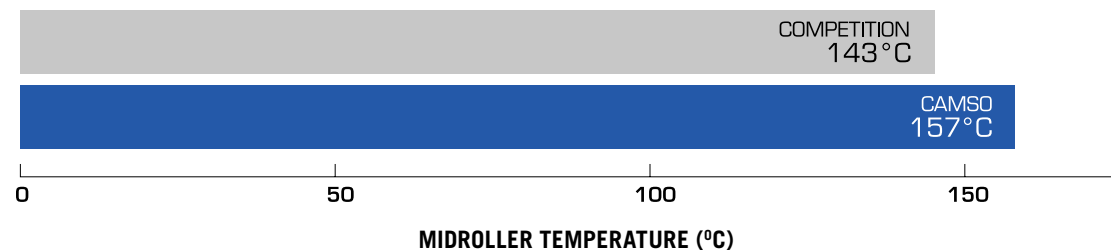


TRACKS

Camso RD 4500 - the next generation of roading track

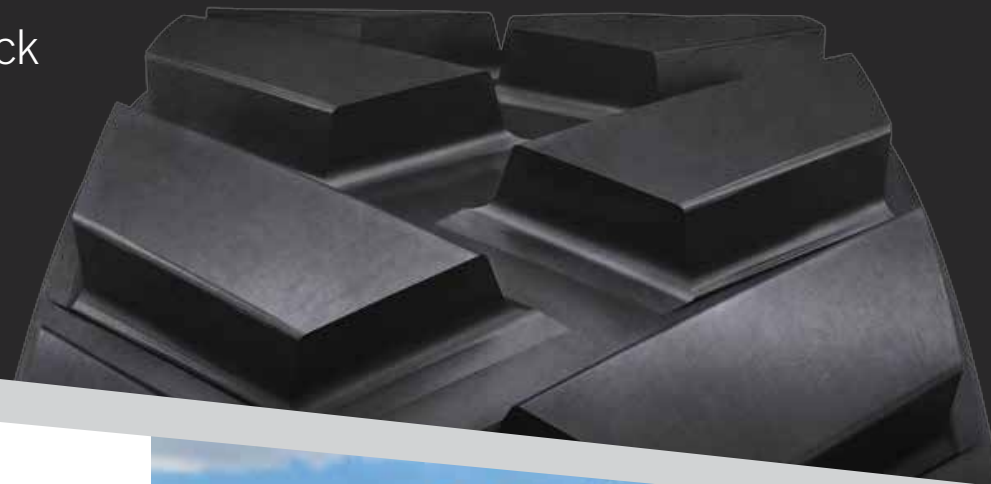
Get out in the field faster with the new Camso 4500 high-roading track for Rowtrac tractors. These Camso tracks allow you to travel up to 40 km per hour on narrow tracks.

The Camso RD 4500 high-roading tracks are built to withstand a higher midroller temperature than competitor tracks to provide you with a durable track you can rely on in the field.



RD 4500 HIGH-ROADING TRACKS TECHNICAL SPECIFICATIONS

Part Number	Track	Treadbars				Drive Lugs		Carcass	
		Qty	Height	Tip Width	Pitch	Qty	Plies	Main Cable	Thickness
51417218	16"	88	1.8"	3.2"	6"	44	4	5.4mm	35mm
51417219	18"								
51444172	21"								
51417221	24"								
51417222	30"								



Camso offers the broadest range of track width for Steiger and Magnum Rowtrac Tractors: 16, 18, 21, 24 and 30 inch

FASTER ROADING SPEEDS, BEST-IN-CLASS PERFORMANCE AND DURABILITY

- Up to 50% faster than previous generation when travelling with implements
- Reduced travel time on the road means up to a 16% increase in field productivity
- Maximised uptime, in the field and on the road



Longest lasting carcass

No material displacement during the manufacturing and curing process

- Uniform tension distribution, eliminating downtime due to carcass tear

Four-ply carcass

New carcass specifically designed for high-speed roading

- Designed to endure higher internal temperatures during roading

High-roading tread bar

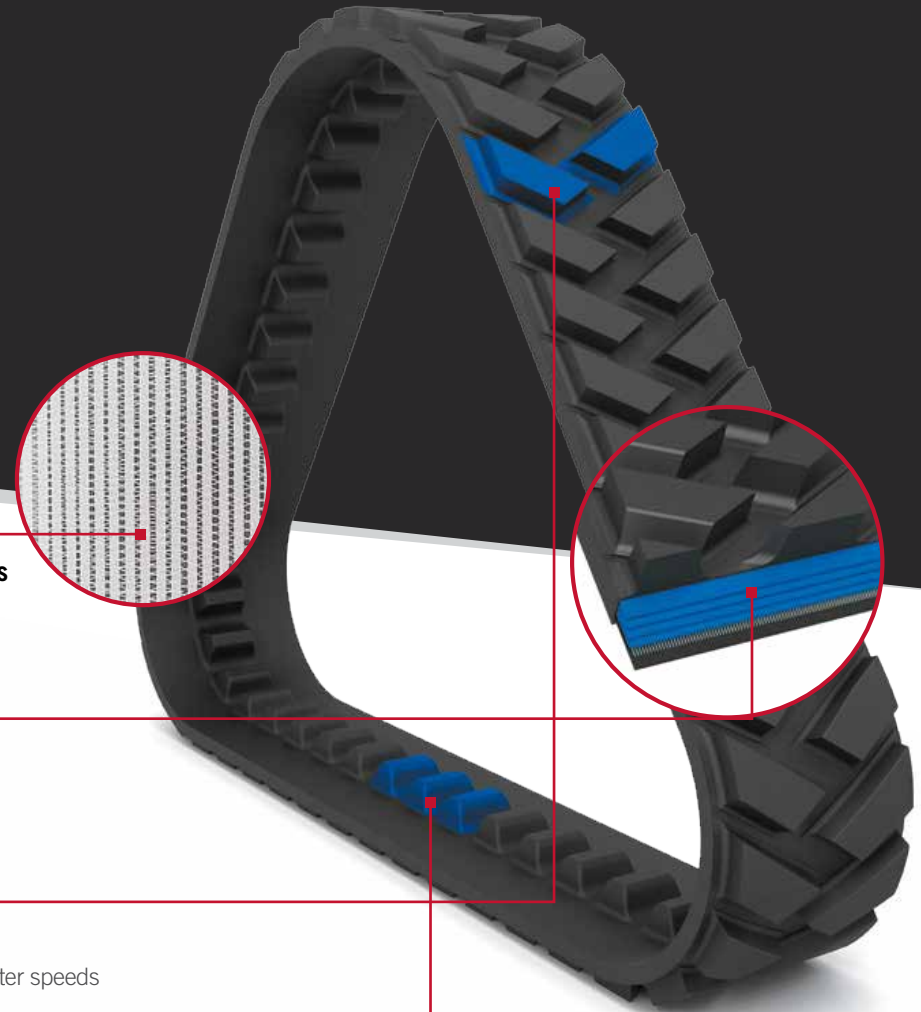
New tread bar designed for high-speed roading

- Enhanced tread bar shape and advanced rubber compound allowing for faster speeds

Optimised drive lugs

Allows for maximum power transfer

- Drive lug geometry designed specifically for Steiger and Magnum Rowtrac drive wheel



TRACKS

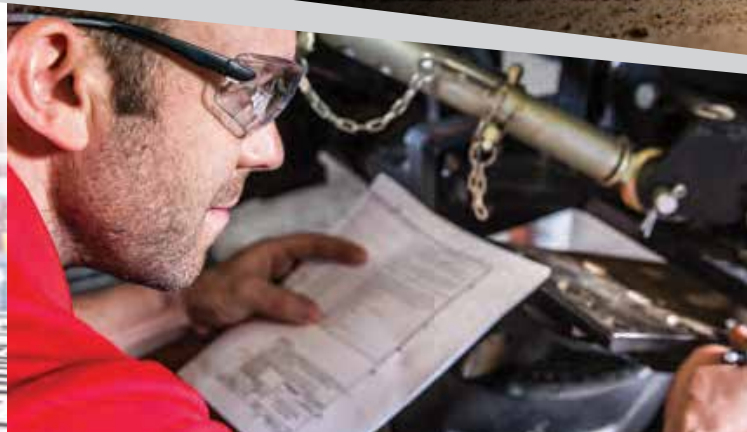
Soucy agricultural tracks for every terrain and situation

With the increase in demand for agricultural tracks we have taken steps to partner with original equipment manufacturer, Soucy, a leading manufacturer for tracks, to provide another alternative for rubber tracks.

Founded in 1967, Soucy has more than 50 years of experience in the development, design and manufacture of rubber tracks for the industrial, recreational, and military vehicle markets. Since 2005, a line of track systems intended exclusively for agricultural equipment and vehicles was developed and was one of the very first track systems to be seen in the world of agriculture.



Overseas model shown.



Soucy's manufacturing processes have been successful throughout the years. They are now known for their practical benefits to farmers.

RUBBER TRACKS MANUFACTURING

Rubber formulations developed by Soucy respond to the performance and durability requirements in farming applications. The rubber mixture, internal components as well as the track profile are engineered with only one objective in mind, which is to offer the best results for farmers, regardless of soil conditions.

UHMW-PE MOULDING

Soucy developed expertise in UHMW-PE moulding. This material is ideal for manufacturing parts that are resistant to impact, corrosion, abrasion and wide temperature variations. This ultra-resistant plastic is also used to manufacture certain replacement wheels for track systems. Combined with rubber, UHMW-PE wheels are lighter, stronger and more efficient.

QUALITY CONTROL

Each product goes through a rigorous development process. Concepts are validated with simulation software, in addition to real life field testing. As such, products meet the highest quality standards.



Overseas model shown.

Soucy tracks undergo testing for more than 1,400 days.
The result: the most durable and efficient track on the market.

NEW DURABILITY STANDARD

The unique rubber mixture developed by Soucy, as well as the inner layers of the track reduce wear substantially. Combined with a chevron high above the industry average, the lifespan of the track profile is significantly extended.

BEST DRIVING COMFORT

The tracks are designed to minimise vibration, to provide the best riding comfort making driving more pleasant and operators can work longer days.

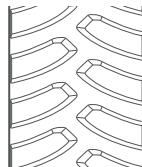
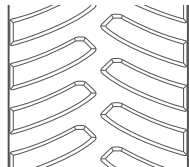
FULL-WIDTH PERFORMANCE

The track profile responds to all types of terrain. In the field, traction is excellent to make travel easier regardless of soil conditions. On the road, the track is incredibly effective thanks to its properties that minimise overheating. The operator can count on transport speeds of up to 40 km/h.

AVAILABLE WIDTHS

To meet the needs of crops in rows, and heavy-duty draft work, the track is available in two widths: 18 in (45.72 cm) and 24 in (60.96 cm).

TRACKS FOR MAGNUM ROWTRAC AND STEIGER ROWTRAC TRACTORS

	ACE R18	ACE R24
Part Number	51417162	51446937
Length	6,705.6 mm (264 in)	6,705.6 mm (264 in)
Width	457.2 mm (18 in)	609.6 mm (24 in)
Thickness	35.6 mm (1.4 in)	35.6 mm (1.4 in)
Profile Height	57.1 mm (2.25 in)	50.8 mm (2 in)
Steel Layer	4	4
Cable Diameter	5.2 mm (0.2 in)	5.2 mm (0.2 in)
Weight	311 kg (685.6 lbs)	390 kg (859.8 lbs)
		
Availability	April 2022	April 2022

Soucy tracks qualify for a 24 months or 1,000 hours warranty, for general agricultural application only.



PAINTS

Colours to stand the test of time

- A large range of manufacturer specified colours for genuine Case IH and Case IH Heritage brand products.
- Protects surfaces from rust and restores your farm machinery to look like new finish.
- Exterior durability and weathering.
- Easy application.

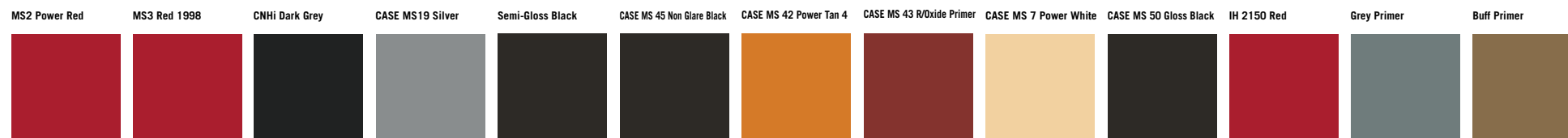


Overseas model shown.

REINVIGORATE YOUR EQUIPMENT TO LOOK AS GOOD AS NEW WITH OUR HIGH PERFORMANCE PAINTS. VALIDATED BY ENGINEERING AND IDENTICAL TO THOSE USED IN PRODUCTION.



Name	Aerosol	1 Litre	4 Litre
MS2 Power Red	B17670N	B17671LF	B17672LF
MS3 Red 1998	B17566N	B17564	B17562
CNHi Dark Grey	B96104	B96105	B96106
CASE MS19 Silver	B17567N	B17565	B17563
Semi-Gloss Black	73323148	73323169	73323190
CASE MS 45 Non Glare Black	990121N	1132129R1	B90886
CASE MS 42 Power Tan 4	B17660N	B17661	B17662
CASE MS 43 R/Oxide Primer	1131655N	991078R1	B90892
CASE MS 7 Power White	B17655N	B17656	B17657
CASE MS 50 Gloss Black	B17680N	B17681	B17682
IH 2150 Red	991012N	73323186	73323208
Grey Primer	B91253N	B91254	B91255
Buff Primer	73323150	73323171	73323191



CABIN PARTS

Genuine lights are guaranteed to fit, built to last and allow you to work, day and night

When spending long days out in the field, the last thing you want is an uncomfortable, impractical, or unsafe cabin.

Now is the time to ensure your cabin is ready for this year's season. Our high-quality, genuine lights will lower the overall cost of your machines with less downtime on replacing faulty or ill-fitting bulbs and improve your machine's durability with the proper visibility in and out of the field.

Our extensive range of lights will also optimise your performance throughout the season, ensuring that you can work safely, day and night.

GENUINE LIGHTS

Part Number	Description	Application
47730257	Rear light, beacon, amber 12/24V	A8000
87050694	Roof light, beacon, rotating 12V	
87688391	Roof light, headlamp, 12V, 65W	
47923059	Worklamp, oval, 30W 60 degree flood	A8000, A8800, Austoft 9900
84807134	Worklamp, clear, 50W	A8000, A8800



47730257

87050694



47923059



84807134



IF IT'S GENUINE, THE QUALITY IS GUARANTEED

Doors, Glass, Mirrors and Wipers

When buying genuine parts, you're buying quality, durability and the guarantee that your parts will fit for the intended use.

Our range of genuine parts are built to the highest standards and designed to function seamlessly with your Case IH equipment.

DOORS

Part Number	Description	Application
84819792	Glass, door, LH	A8000, A8800, Austoft 9900
9513970	Handle, door, LH	
740854	Glass, door, RH	

GLASS

Part Number	Description	Application
84400385	Front windshield	A8000, A8800, Austoft 9900

MIRRORS

Part Number	Description	Application
47982775	Mirror assembly, rear view LH	A8000, A8800, Austoft 9900
47982756	Mirror assembly, rear view RH	
47950964	Mirror, LH	
47950963	Mirror, RH	

WIPERS

Part Number	Description	Application
84007417	Wiper blade 1285 mm	A8000, A8800, Austoft 9900
874408689	Wiper motor 12V	



Fridges



GENUINE PORTABLE ELECTRIC FRIDGE

When you're out in the field, there's plenty of tough days when you're battling the sun, wind or rain. Sometimes you need to take a breather, grab a cold drink and admire your work before getting back to the grind. When you're spending time in the cab, it's nice to have some little luxuries for your home away from home.

Features and Benefits:

- The fridge can be removed each night to take home, clean and repack.
- The fridge can be plugged in to keep your food cool.
- Two cords are provided with the fridge, 1000mm and 450mm so you can choose which length is right for you and avoid excess cabling.



Part Number	Description
47789889	Cool Box with Brackets - Magnum™
48062994	Cool Box with Brackets - Magnum AFS Connect™ (Pre-MY21)
90488948	Cool Box with Brackets - Magnum AFS Connect™ (MY22)

EXPERIENCE THE NEW DOMETIC CFX3

This season, keep your energy levels high with the new Dometic CFX3. This industry-leading fridge comes with flexible power options, a user-friendly interface, removable ice trays, temperature control, and a performance monitoring app.

No matter what hours you work, you can have confidence that your food will stay fresh and safe for when you need a pick-me-up in the field.

Part Number	Description	Storage Capacity (L)	Weight (kg)	Dimensions (W x H x D) (mm)
CFX335	Compressor fridge or freezer	36	16.9	398 x 407 x 694
CFX345	Compressor fridge or freezer	46	18.7	398 x 476 x 694
CFX355	Compressor fridge or freezer	55	20.4	720 x 480 x 455
CFX355IM	Compressor fridge or freezer, ice maker	53	21.3	720 x 480 x 455
CFX375DZ	Compressor fridge and freezer	75	27.8	892 x 472 x 495
CFX395DZ	Compressor fridge and freezer	94	29.8	962 x 472 x 530



USER-FRIENDLY INTERFACE

Weatherproof high-resolution user interface displays operating status.



CONVENIENT CFX3 APP

Temperature control and performance monitoring via CFX3 app.



FLEXIBLE POWER OPTIONS

Powered by AC, DC and solar.



REMOVABLE ICE TRAYS

Produces ice in a matter of hours.



CABIN PARTS

Seat Covers

When choosing from our range of genuine seat covers, you'll never need to pick between comfort and safety. Our seat covers are specifically designed to fit popular brands, such as Puma, Magnum and Steiger. All our seat covers are made with robust and comfortable materials, including a new high-quality 25mm sheepskin option for enclosed cabs. They also undergo strict quality control, ensuring that you can purchase a trusted product at a competitive price. To find the right seat cover for your needs, get in touch with your local dealer today.

Sheepskin for enclosed cabs:

- high-quality 25mm sheepskin
- cool in summer, warm in winter
- lasting quality.



SuperTuff canvas for open cabs:

- PVC backed
- reinforced stitching
- waterproof
- tailor-made to fit
- flame retardant.

Rough country canvas for enclosed cabs:

- foam padded
- reinforced stitching
- waterproof
- UV stabilised
- tailor-made to fit
- flame retardant.



CABIN PARTS Aftermarket lights



9-64V LED WORK LAMP FLOOD BEAM 6000LM RECTANGULAR 6 X 10W LED

NA72457

- Delivers a powerful and high quality spread of intense, white light.



9-64V LED WORK LIGHT FLOOD BEAM 1000LM OVAL 2 X 5W WITH 2 LEDs

NA72446

- A powerful yet compact work lamp with two powerful 5W L.E.D.s ideal for close range illumination and where space is limited.



9-64V LED WORK LAMP FLOOD BEAM 4000LM SQUARE 4 X 10W LED

NA72453

- Four powerful and ultra reliable 10W L.E.D.s deliver a high quality spread of intense, bright white light.



AMP CONNECTOR ASSORT

NA57500

- Contains the full range of AMP Super Seal connectors including male and female terminals.



2 WAY DTP DEUTSCH CON. KIT(1)

NA57314BL

- 2 Way (Male/Female) DTP Connector Kit with Wedges and size 12 Terminals. Amp Rating: 25A - Blister Pack.



4 WAY DTP DEUTSCH CON. KIT(1)

NA57316BL

- 4 Way (Male/Female) DTP Connector Kit with Wedges and size 12 Terminals. Amp Rating: 25A - Blister Pack



DEUTSCH CONNECTOR ASSORTMENT

NA57400

- Contains a comprehensive assortment of Deutsch DT Series high end connectors including male and female terminals. Packed in a quality plastic case.

DTM DEUTSCH CONNECTOR ASSORTMENT

NA57313

- Contains a comprehensive assortment of Deutsch DTM connectors including male and female terminals. Packed in a quality plastic case.

NARVA®
THE VISION TO GO FURTHER



PROFESSIONAL POCKET LED PEN LIGHT

TS300600

- Bright and robust pocket pen light for quick and easy illumination of dark work areas
- Lighting modes: bottom light with direct beam and work light with wide flood beam
- Inbuilt belt clip with magnet



PROFESSIONAL FOLDABLE LED SLIMLIGHT

TS300606

- Handy foldable pocket pen light for quick and easy illumination dark work areas
- Features three lighting modes: front fold out flood light with normal and eco modes, rear flood light and direct beam top light



PROFESSIONAL FLOOD AND AREA WORKLIGHT

TS300609

- Multifunctional flood and area light suitable for use in workshops, building and camping
- Stepless dimmer switch easily adjusts the brightness from 60 - 1000 lumens
- Built-in power bank allows for the charging of smart phones and tablets



PROFESSIONAL SLIMLINE LED HEADLAMP

TS300607

- Lightweight and easy to use LED headlamp allows for ease of lighting in dark areas while keeping your hands free
- Features three lighting modes: Eco, Normal and Sense Mode



Sykes-Pickavant®

CABIN PARTS Communications



*Improve
your mobile coverage.*

with
CEL-FI **GO** Mobile **smart** signal repeater packs



CEL-FI GO TELSTRA SMART SIGNAL REPEATER + CLR8-5G ANTENNA

AXGO T +ANT

- This kit features the 73cm CLR8-5G high quality 7/9 dBi spring base antenna.
- Ideal for highway and all on/off-road communications.

SPECIAL OFFER
Free two years extended
warranty for a total of 4 years
(VALUED AT \$130)

MINI COMPACT UHF CD RADIO WITH 3.1DBI ANTENNA

AXMACHINERYPACK

- The Machinery Pack is the ideal kit for construction & agricultural machinery.
- It comes with the PRO901 Mini compact, rugged UHF CB radio and 3.1dBi Antenna Kit.



audioxtra
AUTOMOTIVE SOLUTIONS

For over 60 years, GME has been an industry leader in the RF communication technology space. GME remains a family-owned private company, and is proudly 100% Australian. GME is the only Australian manufacturer of UHF CB radios and emergency beacon products, with an ongoing focus on innovation and technology leadership. GME prides themselves on engineering and manufacturing high quality, market-leading products to suit the specific requirements of our customers.

XRS™ CONNECT IP67 UHF CB RADIO WITH BLUETOOTH® & GPS

XRS-390C

- Built-in GPS Receiver
- IP67 Ingress Protection: Waterproof & Dustproof
- MIL-STD 810G
- 5 Watt Transmission Power
- Professional-grade IP67 OLED Speaker Microphone
- 2 Watt Front-facing Speaker
- Bluetooth® Wireless Technology – Smartphone Control
- XRS™ Connect – Smartphone Application



GPS PERSONAL LOCATOR BEACON

MT610GAUS

- Compact, Lightweight Design
- IP68 Ingress Protection
- Integrated 72Ch GPS Receiver
- 7 Year Battery Life
- 121.5MHz Homing Transmitter
- Cospas-Sarsat Certified (Class 2)
- Easily Deployed in an Emergency
- Inherently Buoyant



FIRE SUPPRESSION

Legally compliant with Australian standards

For an Australian, practicing and understanding fire safety and prevention methods is not only recommended, it's a necessity. Our environment means we're constantly faced with conditions that could ignite catastrophic damage within moments.

The inside chambers of agriculture equipment can climb to extreme temperatures, as is the nature of heavy-duty machinery. When chaff is picked up by fans or wheels and is caught inside, if they heat up, they can smoulder and catch on fire.

Checking your machines regularly to remove straw or grass build up is recommended, as well as checking spark arrestors are maintained. However even with diligent checks to your equipment, it's important to always be prepared for any scenario with the recommendation to always have at least two fire extinguishing options equipped to each machine.



Part Number	Description
CH2040/17	Fire extinguisher 1.0kg ABE dry chemical 1A:10B:E
CH2062/17	Fire extinguisher 1.5kg ABE dry chemical 2A:30B:E
CH2055/17	Fire extinguisher 2.3kg ABE dry chemical 2A:40B:E
CH2058/17	Fire extinguisher 4.35kg ABE dry chemical 4A:60B:E
CH2060/17	Fire extinguisher 9.0kg ABE dry chemical 6A:80B:E
CH1013/17	Fire extinguisher 9.0lt 3A water
CH1013/17F	Fire extinguisher 9ltr water f/guard filled
CH9LFOAM-FF	Fire extinguisher 9.0lt foam 3A:20B
CH70074	Fire extinguisher vehicle bracket HD suits 2.5kg to 4.5kg
CH70076	Fire extinguisher vehicle bracket HD suits 9.0kg

REMAN ENGINES

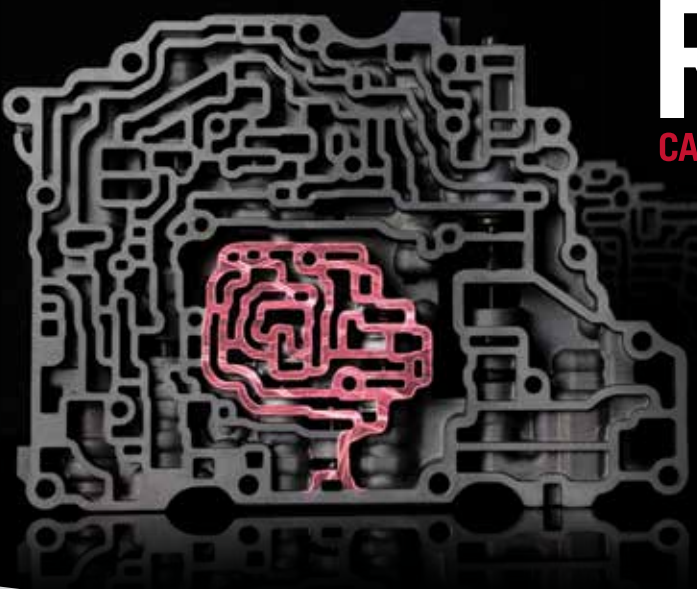
Why choose Case IH reman parts?

We've invested in the most sophisticated precision tools and machinery for our remanufacturing processes. Along with stringent quality processes in place to ensure our reman engines are delivered with like or better-than-new quality.

Our complete reman engines installed by authorised Case IH dealerships also come with a 24-month warranty period to give you peace of mind.

RETHINK

CASE IH GENUINE REMAN PARTS.



TESTING AND QUALITY MEASURES

- Replacement level engines with fuel systems undergo dyno testing to ensure proper oil pressure, exhaust temperature, horsepower, water and oil circulation, and overall functionality.
- Long block engines are spin-tested to confirm compression and oil pressure.
- Fluorescent Magnetic Particle Inspection is used to identify surface flaws.
- Sediment Testing confirms all remanufactured parts are clean for maximum operating life.
- Air Decay Testing will detect any fuel, oil, or water leaks.



ENGINES

Part Number	Description	Application
5801793848ER	Reman engine	Magnum 280, 310, 340, 380
5801695035ER	Reman engine	Magnum 340





Beyond a better rebuild

A BETTER PROCESS RESULTS IN A BETTER PRODUCT

- **Camshafts** – Camshafts are examined and straightened, and all main journals and lobes are checked. Those that pass are machined to ensure proper valve lift and timing; those that do not meet specs are replaced with new.
- **Connecting Rods** – Connecting rods are thoroughly cleaned and checked for straightness; those that do not meet specifications are replaced with new. Both crank and piston pin bores are checked for size, and 100% new bearings and bushings are installed.
- **Crankcases** – Machining is performed to ensure all bores meet exacting dimensional specifications. Cylinder bores are honed with the latest technology. This level of precision ensures that bores meet EPA tier emission requirements. Wet sleeve engine sleeves are replaced 100% with new.
- **Crankshafts** – Crankshafts are dimensionally and structurally inspected, then ground and micro-polished to exacting tolerances.
- **Cylinder Heads** – All cylinder heads are inspected for cracks; those that pass are milled to ensure flatness. Valve seats and guides are machined with precision equipment to ensure proper valve seating, recession, clearance and runout.
- **Cylinder Sleeves** – Engine with wet sleeves are replaced 100% with new. In dry sleeve engines, cylinder bores are enlarged and honed. In the repair process, a liquid nitrogen cooling tank contracts cylinder repair sleeves before installation, so once set, they expand to a permanent, pressed fit.
- **Painting** – Guards, plugs, and grease protectant are used to avoid painting active surfaces. This prevents system contamination, misalignment, or leak-causing gaps created from melting or flecked paint.

REMAN

• LESS DOWNTIME WITH INSTALLATION OPTIONS

Because many of our remanufactured parts are ready to install, service technicians spend less time completing repairs or shop installs.

The result? Quicker turnaround and a whole new level of equipment uptime for you.

• OEM PERFORMANCE

Our remanufactured parts are engineered to deliver like -new performance that meets stringent Case IH performance specifications.

• SIGNIFICANT SAVINGS

Our remanufactured parts are competitively priced, offering great value while ensuring peak performance.

• QUALITY

Our remanufactured parts are completely disassembled. All parts are thoroughly inspected and reassembled to the latest OEM specifications.

ENGINES

- Long block
- Short block
- Replacement engine

ROTATING ELECTRICAL

- Alternator
- Starter motor

ENGINE COMPONENTS

- Cylinder head
- Crankshaft
- Camshaft
- Crankcase
- Connecting rod
- Water pump
- Oil cooler

FUEL

- Fuel injection pump
- Fuel injector

AC COMPRESSOR

TURBOCHARGER

BLOWER MOTOR

ROLLER WHEEL

ELECTRONICS

- ECU
- Joystick
- Monitor

HYDRAULICS

- Hydraulic pump
- Hydraulic cylinder
- Hydraulic motor

DRIVELINE

- Axle
- Clutches
- Final drive
- Gearbox
- Transmission
- Torque converter



REMANUFACTURED PARTS FOR YOUR MAGNUM TRACTOR. GREAT QUALITY, EXCEPTIONAL VALUE.
OUR GENUINE REMAN PARTS ARE THE SMART WAY TO KEEP YOUR MACHINERY **AS GOOD AS NEW.**

REMAN PARTS

Well-looked after machinery and equipment is the best foundation for an efficient sowing season and to prevent downtime in the field. When it comes to maintenance and repairs, Reman parts are a high-quality and cost-effective option. On average, a reman part is 30% cheaper than the equivalent new part. Reman parts also outperform used or rebuilt parts, making them an option you can trust to perform when it counts.



DRIVELINE

Part Number	Description	Application
84146340R	Reman-damper	Magnum 235, 250, 260, 280, 290, 310, 315, 340, 380
302174A1R	Reman-final drive	Magnum 235, 260, 290, 315, 340
84585561R	Reman-wheel idler	Magnum 380
84478789R	Reman-wheel idler	
48145600R	Reman-wheel roller	

ELECTRONICS

Part Number	Description	Application
87663947R	Reman-blower	Magnum 235, 250, 260, 280, 290, 310, 315, 340, 380
47416081R	Reman elect control	
87475204R	Reman elect control	
84406543R	Reman elect control	
84348127R	Reman elect control	Magnum 235, 260, 290, 315, 340
47565939R	Reman elect control	Magnum 380

FUEL

Part Number	Description	Application
47506948R	Reman-injector, EMMI	Magnum 380

HYDRAULICS

Part Number	Description	Application
47735819R	Reman-valve hyd	Magnum 235, 250, 260, 280, 290, 310, 315, 340, 380
47473854R	Reman-hyd pump	
87455647R	Reman-hydr cylinder	Magnum 235, 260, 290, 315
87455648R	Reman-hydr cylinder	

ROTATING ELECTRICAL

Part Number	Description	Application
504357253R	Reman-starter	Magnum 235, 250, 260, 280, 290, 310, 315, 340, 380
48163614R	Reman-alternator	

CLEAN FUEL SYSTEMS



Why Filter Fuels?

Today's sophisticated equipment, such as diesel engines with increased injection pressures, requires higher cleanliness levels than ever before. Donaldson bulk filtration systems save on costly component replacement, prevent unplanned downtime and prevent a decrease in fuel efficiency due to injector wear.

In short, Donaldson reduces your total cost of ownership.



DID YOU KNOW?

As diesel travels from refinery to terminal locations to local bulk storage and finally to your bulk tank, it picks up contamination that is deadly to today's engines.

REMOVE THE DIRT - ACHIEVE MORE

By filtering out dirt, water and other contaminants before your fuel ever touches your equipment, you'll minimise costly downtime, keep running and achieve more.

CLEAN DIESEL KITS:

Donaldson clean and dry diesel kits provide simple and effective outlet filtration on fuel dispensers that allows you to pump clean fuel into your vehicles and equipment.

These kits are easy to install on any fuel dispenser and come with everything needed to filter out even the finest contaminants before they can enter your equipment's fuel system. With the included easy-to-follow, step-by-step instructions, you'll have effective, efficient filtration in minutes.

The clean and dry diesel kits remove fuel contamination and stops water. These sets use two high performance filters/sets, in series, to clean your diesel fuel ready for use.



**P506073
Series Filtration**

For flow rates up to
50 GPM / 189 LPM



**X900018
Series Filtration**

For flow rates up to
100 GPM / 375 LPM

SAFETY SIGNS

BE SEEN-BE SAFE

Clear and well placed signage is critical for the safety of your farm. Safety signs and labels are critical to your operation and the safety of your farm. These safety signs are designed to help keep everyone on the grounds safe.

We have a wide range of signs available to suit your every application that are made from a variety of materials including aluminium, metal, nylon and mesh.



**OVERSIZE
LOAD AHEAD**

ROAD

TRAIN

LONG VEHICLE

**DO NOT OVERTAKE
TURNING VEHICLE**

**DO NOT OVERTAKE
TURNING VEHICLE**

**OVER
SIZE**

**DO NOT
OVERTAKE
TURNING VEHICLE**

TOYS

With a large range of ride-ons, scale toys and collectables, we've got your gifts sorted for the little or large tractor lovers in your life.

Visit your local Case IH dealer today to see what is in store today!

RIDE-ON TOYS

PEDAL TRACTOR WITH WAGON

Let children keep active with one of the most exciting pedal and chain drive vehicles around! Fill up the trailer on the back and deliver goodies as part of exciting farm play or to help mum and dad with the chores!

- Enclosed bicycle chain to protect curious, little fingers
- Adjustable bucket seats with roll-bar, perfect for a growing child
- Heavy-duty tractor wheels run easily over dirt, grass, gravel or hard paved surfaces



Pedal tractor and wagon
44062



Pedal tractor with trailer
73322346



Pedal tractor with loader
73322351



Sit N Scoot
73322295



Magnum™
12-volt
battery
operated
tractor
44060



Magnum™ pink 12-volt
battery operated tractor
44065

SCALE TOYS AND COLLECTIBLES



Steiger Quadtrac 580
44234



Steiger 580 4WD Prestige
44235



Steiger 620 4WD
44239



Quadtrac 580
44238



380 Magnum
44154

PLUSH TOYS



Quadtrac



Puma

MERCHANDISE

Wear it loud and proud

JACKETS

Grey long sleeve tyre tee

Limited Edition Adventure Jacket

Limited Edition Contrast Jacket

Burlington Tempest Jacket

LONG SLEEVE SHIRTS



Long Sleeve Black Polo



SHORT SLEEVE SHIRTS

Harvester t-shirt



Crest black t-shirt



Mens red claremont polo



Ladies white claremont polo



Ladies pale pink cotton polo

HEADWEAR



Retro IH flat peak cap



Ladies pink cap



Leo cap

ACCESSORIES

BLUETOOTH® SPEAKER

The Case IH Bluetooth® speaker offers high definition stereo sound and is compatible with all mobile devices that support Bluetooth®. Its compact and sleek design means that it can be used anywhere without compromising on the sound quality.



Harvest backpack

Red backpack



Tasman black duffle bag



Glass Karma Cup



Thermo Bottle 750ml



Chevron bottle opener



Snappy bottle opener keyring - black

Picnic blanket

Click here to shop the whole range on the Case IH Store or go to thecaseihshop.com.au

CLICK HERE

REDXTEND

GREAT BENEFITS

AVAILABLE ACROSS CASE IH TRACTORS, COMBINES, BALERS, SELF-PROPELLED WINDROWERS AND PATRIOT SPRAYERS, REDXTEND PROVIDES YOU WITH OPTIONS TO EXTEND THE STANDARD PRODUCT WARRANTY PROVIDED. YOU SELECT THE PLAN WHICH BEST MEETS YOUR NEEDS.



QUALITY REPAIRS

If your machine requires some attention, all eligible repairs will be carried out using genuine Case IH parts and will be fitted by our dedicated, factory-trained technicians.

TRANSFERABLE PROTECTION

RedXtend plans remain with the machine and are transferable to the new owner if sold during the protection period*. This provides prospective owners of your Case IH equipment with the peace of mind that the equipment has been properly cared for under your ownership.

FINANCING

For greater convenience and flexibility, RedXtend warranty can be financed as part of your Case IH equipment purchase. Speak to your dealer about developing a complete finance solution**.

FLEXIBILITY OF PLANS

RedXtend is designed with the care and maintenance of your Case IH equipment in mind, allowing you to choose a protection plan for your specific needs.

* T&C's apply. Contact your local Case IH dealer for details.

** RedXtend Plans financed through CNH Industrial Capital Australia Pty Limited are required to be financed with the new machine purchase at time of sale and are subject to final approval.

REDXTEND
WARRANTY

REMEMBER, IF YOU TRADE OR SELL YOUR CASE IH
DURING THE COMPLETE PROTECTION PERIOD, THE NEW
OWNER WILL MAINTAIN THE ADVANTAGES OF **REDXTEND**.*



If you would like to transfer the benefits of RedXtend to the new owner, you will need to complete the Notice of Transfer and otherwise meet the requirements set out in the RedXtend Warranty Registration Document.

REDXTEND
WARRANTY



   
caseih.com

31-53 Kurrajong Road, St Marys NSW, 2760, Australia

Case IH reserves the right to make improvements in design and changes in specifications at any time without notice and without incurring any obligation to install them on units previously sold. The specifications, descriptions and illustrative material contained herein are as accurate as known at time of publication, but are subject to change without notice. Illustrations may include optional equipment and accessories and may not include all standard equipment.

CASE IH