

For more information on New Holland Agriculture Products:



CASE IH: FOR THOSE WHO DEMAND MORE

#### CNH INDUSTRIAL (INDIA) PVT. LTD.

[Formerly known as New Holland Fiat (India) Pvt. Ltd]  
A-1/1, Chakan, Industrial Area, Phase- II, VIII. Shinde,  
Tal.-Khed, Pune-410501, Maharashtra  
Website: [www.newhollandindia.com/in](http://www.newhollandindia.com/in)  
Toll Free Number: 1800 419 0124



**SAFETY NEVER HURTS!™** Always read the Operator's Manual before operating any equipment. Inspect equipment before using it, and be sure it is operating properly. Follow the product safety signs and use any safety features provided.

*This literature has been published for worldwide circulation. The standard and optional equipment and the availability of individual models may vary from one country to the next. Case IH reserves the right to undertake modifications without prior notice to the design and technical equipment at all times without this resulting in any obligation whatsoever to make such modifications to units already sold. Whilst every effort is made to ensure that the specifications, descriptions and illustrations in this brochure are correct at the time of going to press, these are also subject to change without prior notice. Illustrations may show optional equipment or may not show all standard equipment.*

For more information on New Holland Agriculture Products:



For more information on CASE IH Sugarcane Harvester:



# AUSTOFT® SUGARCANE HARVESTERS

**AUSTOFT  
4000**

**DOUBLE PLUS<sup>+</sup>**

*Special Edition*

Toll Free Number: 1800 419 0124





**WHERE THERE IS  
ADVANCED AGRICULTURE,  
THERE IS CASE IH.**



Case IH is a global leader in state-of-art technology, performance, and productivity in agricultural mechanisation. Its product lines are present in more than 160 markets across five continents, offering advanced solutions from planting to harvesting.





# INNOVATION WITHOUT LIMITS.

A registered trademark of Case IH.

Case Ih is a subsidiary of CNH Industrial. CNH Industrial is a global reference in the sugar and alcohol sector. With more than 75 years of experience in the sector CNH Industrial is the leader in providing mechanised sugarcane harvesting solutions.

Known for its continuous customer centric innovations by developing and creating benchmarks in Agricultural technology, now CNH Industrial introduces the next-gen Sugarcane Harvester: Austoft 4000 with variants double plus+ & special edition.

## BETTER CUTTING QUALITY, IMPROVED PRODUCTIVITY AND LONGER STOOL LIFE IN THE SUGARCANE FIELD.

The Sugarcane Harvester Austoft 4000 represents once again the pioneering spirit of Case IH. Working in row spacings starting from 4 feet (120cm) this harvester is narrow enough to harvest one row without compacting the root zone of the adjacent cane row. The Austoft 4000 is compact, light, has excellent manoeuvrability and an excellent base cut resulting in reduced cane loss and increased productivity in subsequent ratoons. This light weight compact machine enables to harvest in partially wet fields thereby increasing its ability to harvest under varied conditions.

**Cleanest Cane**

**Maximum Returns**

**High Fuel Efficiency**

**Best-in-Class Quality-Reliability**

**Quality Care at Door Step**

**Total Control**



# FIND OUT MORE ABOUT THE AUSTOFT 4000

## HARVESTING AND FEEDING SYSTEM:

- 1 Crop Dividers:** Two pairs of crop dividers have been provided, to enable separation of the sugarcane row that is being harvested from the adjacent row and lift the lodged cane stalks to facilitate the feeding operation.
- 2 Knockdown Roller:** Inclines the cane stalks to be cut, facilitating the base cutting operation and the initial feeding of the machine.
- 3 Feedroller (finned):** Aligns the cane stalks and helps the feeding of the cane stalks immediately after they are severed by the base cutter.
- 4 Basecutter:** Ensures flushed to ground level cane harvesting through appropriately tilted base cutter discs and also enables feeding of the harvested cane stalks to the butt-lift roller.
- 5 Butt Lifter Roller:** Lifts the sugarcane stalks cut by the base cutter and guides them into the machine feeder train.



## TOPPER SYSTEM:

- 6 Topper:** Cuts the tops and throw away on the ground, on left or right hand side.



## FEED ROLLERS:

- 7 Feed Rollers:** Transport and feed the cane stalks to the chopper drums.



## CHOPPING SYSTEM:

- 8 Chopper Drums:** A pair of chopper drums consisting of 3 blades each cuts the sugarcane into billets and throw the billets into elevator bowl. the chopper provides clean cut billets through its differential speed cutting mechanism.



## CLEANING SYSTEM:

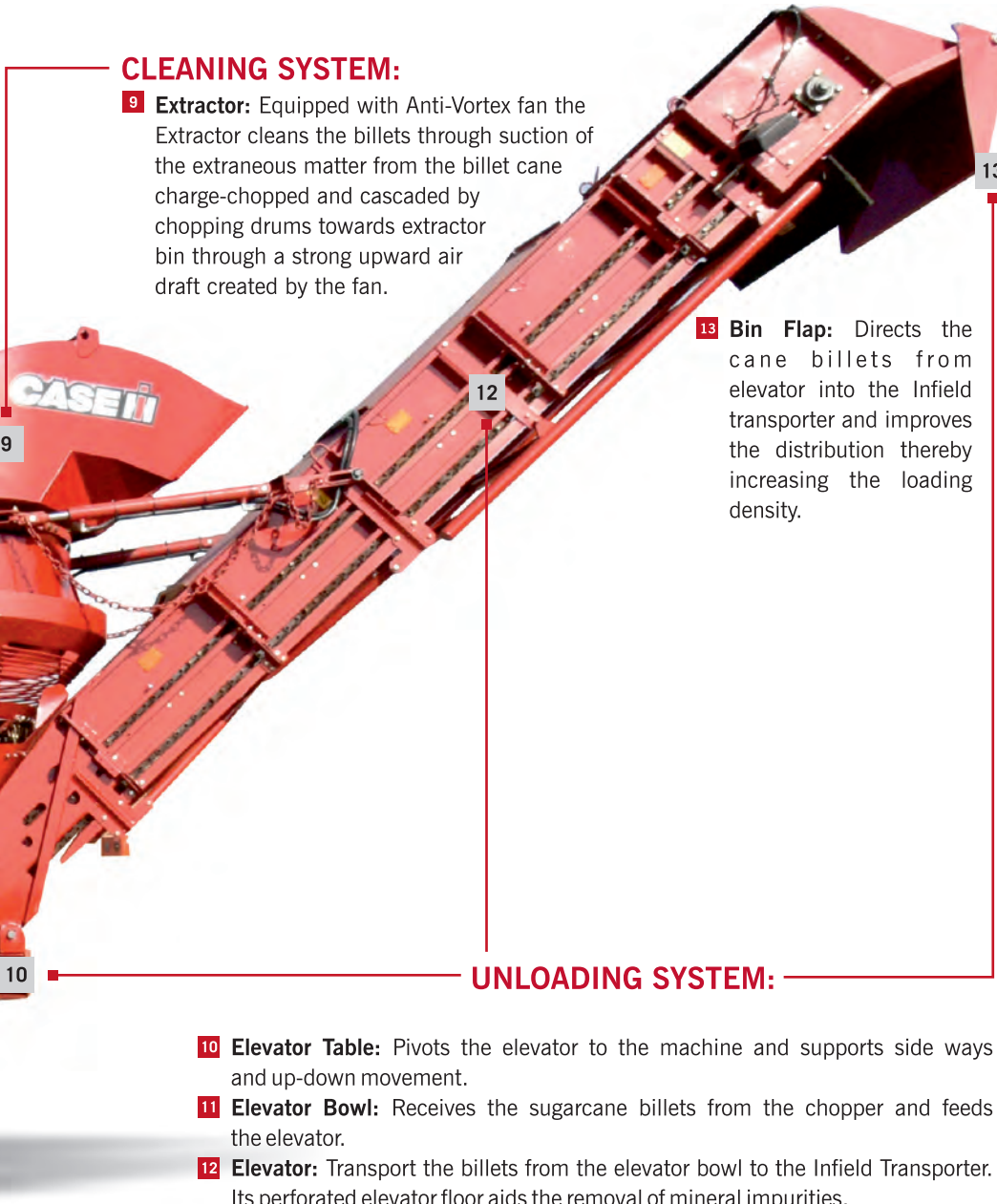
- 9 Extractor:** Equipped with Anti-Vortex fan the Extractor cleans the billets through suction of the extraneous matter from the billet cane charge-chopped and cascaded by chopping drums towards extractor bin through a strong upward air draft created by the fan.



## UNLOADING SYSTEM:

- 10 Elevator Table:** Pivots the elevator to the machine and supports side ways and up-down movement.
- 11 Elevator Bowl:** Receives the sugarcane billets from the chopper and feeds the elevator.
- 12 Elevator:** Transport the billets from the elevator bowl to the Infield Transporter. Its perforated elevator floor aids the removal of mineral impurities.

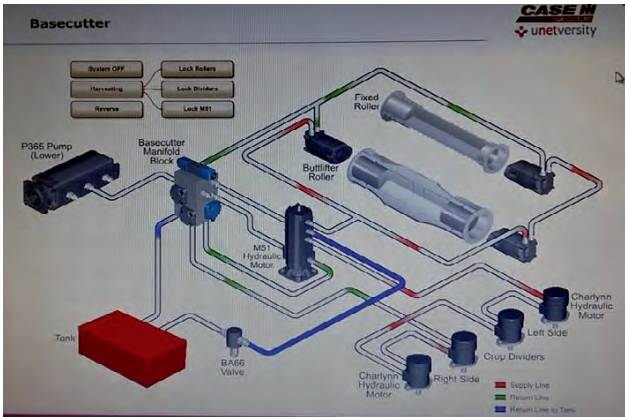
- 13 Bin Flap:** Directs the cane billets from elevator into the Infield transporter and improves the distribution thereby increasing the loading density.





# ADVANCED FEATURES

Find out more about the Austoft 4000



**Uniflow Hydraulic System**  
Improved and uniform power to harvesting & cleaning system



**Heavy Duty Motor Mounting Chassis**  
Improved reliability & durability of chassis



**Turbo Air Drag Cleaning System**  
Better extraction of trash resulting in cleaner cane billets



**Relocated Dip Stick**  
Ease of access & frequent opening of bird cage avoided



**Bigger Tyre**  
Improved stability and better life (16.9 X 28 tyres)



**Improved Bird Cage Sealing**  
Engine safeguarded from trash entry, improved productivity & safety

# ADVANCED FEATURES

Find out more about the Austoft 4000



**Elevator Rubber Flap**  
Avoids the billets from falling onto the ground during Infielder filling



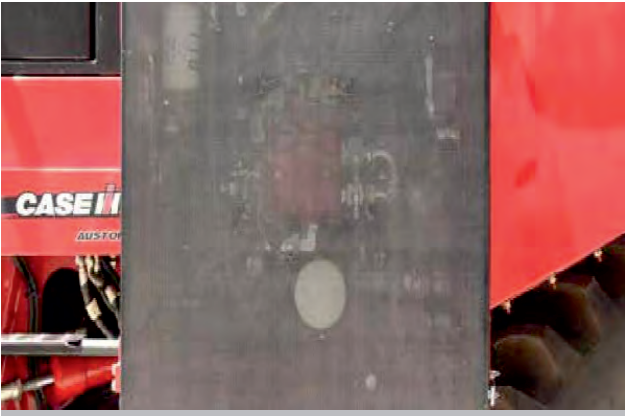
**Heavy Duty Extractor Hood**  
Improved reliability of cane trash extraction system



**Bigger Radiator**  
Increased cooling efficiency



**Cabin Windshield Guard**  
Effective protection of cabin windshield from cane hits



**Hermetically sealed Engine Compartment**  
No trash entry, improved engine life, less engine heating



**Disc-O-Gather Topper\***  
Ensures excellent removal of Tops resulting in less trash going into machine & reduced fuel consumption

\*Optional variant, The base variant machine is equipped with standard topper and Special Edition machine comes with Disc-O-Gather Topper.



# NEW PREMIUM FEATURES

Find out more about the Austoft 4000

## Sky Watch™ (Standard)

CASE IH brings to you the revolutionary SKYWATCH Telematics, which enhances performance of the sugarcane harvester through improved control and efficient monitoring of operations. As the name suggests, this feature enables observation of every single detail of the harvester's performance remotely.

SKY WATCH



\*Mobile App Available

### Track & Trace

- Machine Live location Tracking

### Performance Enhancement

- Machine Usage Report

### Proactive Alerts

- Minimum Downtime
- Timely Service Reminders

### Theft safety

- Fuel Pilferage Alert
- Machine Unauthorized Access Alert

# NEW PREMIUM FEATURES

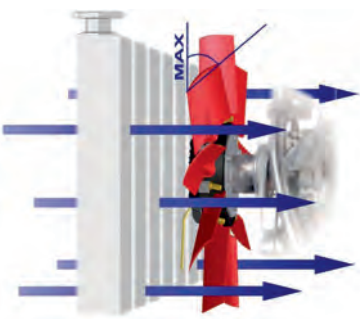
Find out more about the Austoft 4000



## Antivortex Fan™ \*

AUSTOFT 4000 is equipped with a four-blade Antivortex fan, globally it is the most efficient trash removal technology from the harvested cane. It not only reduces the amount of extraneous matter in the billet cane significantly than other methods but also the Antivortex system substantially reduces the power consumption in the harvester's cleaning system.

- Excellent cleaning - minimal trash
- Less vibration of extractor hood - More life
- More extractor blade life
- Reduced load – less operating RPM of the fan @1400RPM
- Fuel saving
- Improves loading capacity of transport thus lowering the operating costs.



## Smart Reversible Fan\*

The smart reversible engine cooling fan reverses the air flow periodically and cleans out the radiator, pump box door and bird cage automatically. It ensures improved air flow in the engine box all the time, thus reducing cleaning time and ensuring continuous running even under the most rigorous conditions.

- Automatic function
- Better cooling - uninterrupted operation
- Improves air flow in the engine box
- No need of frequent manual cleaning of engine box, pump box door and bird cage.



## Smart Eye Camera\*

The rear fitted camera ensures safety during reversing as it averts accidents. This feature also ensures better harvest quality by avoiding losses of billets during unloading.

- Clear rear view and fast screen switching system
- Reduced losses
- Improved safety
- Improved operator visibility - less risk of the Cane Harvester's Elevator striking the infielder, overhead wires

\*Optional





# FLEXIBILITY, RELIABILITY AND COMFORT.

# WORLDWIDE, AN ADVANCED SYSTEM FOR ENSURING HIGH PERFORMANCE OF THE AGRIBUSINESS.



## EXCELLENT COST-BENEFIT

The Austoft 4000 is compact in size as compared to the conventional models of Case IH and is easy to move between cane fields. The Austoft 4000 was designed with the same functional concept as the A8000 Series harvesters. Because of this, many of its parts are interchangeable with other models of Case IH sugarcane harvesters. This characteristic significantly increases the machine's cost-benefit ratio thereby providing value for money to the entrepreneurs

## EASY & FAST TO SERVICE

The Austoft 4000 was designed for easy & simple maintenance. The engine, hydraulic system, and critical components are easily accessible thereby streamlining the machine's preventive maintenance resulting in increasing the machine's availability for harvesting.

## COMFORT FOR THE OPERATOR

For greater productivity, the Austoft 4000 has a well designed and comfortable AC cabin. The ergonomically positioned controls, the deluxe seat and excellent overall field visibility provide optimum comfort and ease of operations to ensure long uninterrupted operations.

## MAINTAIN THE PRODUCTIVITY OF YOUR INVESTMENT

Case IH and its dedicated dealer network provide excellent service support when you take delivery of your machine and whilst it remains in your ownership. On the farm, you can rely on trained service professionals to maintain the productivity of your investment.

## CNH INDUSTRIAL GENUINE PARTS

A guarantee from the factory. CNH Industrial genuine parts are designed especially so that the machines perform to their maximum capability. They were developed by the factory, tested, and approved under very demanding tests conditions in order to serve your machine. Non-genuine parts cause damage and end up doing great harm to your equipment and your budget. Always use CNHI genuine parts. They were tailor-made in order to ensure greater efficiency for your machine, longer operational life of the components. Adequate amount of spare parts are available at strategic locations across the country through its dealer and distribution centers.

## ADVANCE TRAINING SUPPORT

Company has a training facility with specialized technical assistance for giving support to the customer. The training facility includes well experienced faculty, digitalized classrooms and workshops with various aggregates of harvesters, implements and tractors to impart best hands on experience and knowledge to the customer.



### XPRESS SERVICE: Quality care at door step

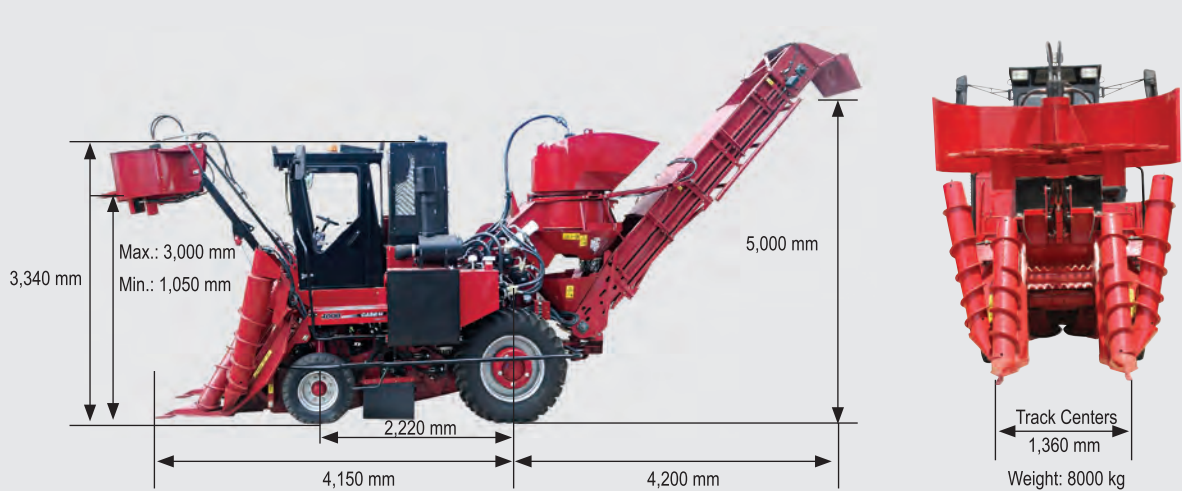
- 24 x 7 service
- Ensured tonnage
- Parts availability near you
- Service facility of van & bikes
- Float stock availability



SPECIFICATIONS

Austoft 4000			
ENGINE		FEED ROLLERS	
Make	Cummins	Number of Rollers	11
Series	6BTA	Number of Rollers on the roller train	8
Power	174hp	Drive	Hydraulic and reversible
Cylinder Volume	5.9L	Upper Rollers	Floating
Number of Cylinders	6	EXTREME CHOPPER	
Aspiration	Turbo/Aftercooler	Number of Drums/Knives Per Drum	2 / 3
TRANSMISSION		Deflector Plate	Adjustable
Type	Hydrostatic	KNOCKDOWN ROLLER	
Travel speed	16km/h	Height	Adjustable
CAPACITY		Angle	51°
Fuel Tank	210 L	EXTRACTOR	
Hydraulic Oil Tank	130 L	Extractor Fan Type	Anti Vortex™ [Optional]
TYRES		Hood	Directional
Front	10.5X16, 8-ply	ELEVATOR	
Rear	16.9X 28 R-1, 10-ply	Drive	Hydraulic and reversible
TOPPER		Turning Angle	170°
Gathering Discs	2 [Optional]	AC CABIN	
Height Variation	1050 to 3000 mm	No of Doors	2
Height Adjustment	Hydraulic	No. of Lights	7
Severing Drum	Bi-Directional	Windshield Wiper	1
LIFT-O-MATIC CROP DIVIDERS		Sky Watch	Yes
Twin Crop Dividers	Yes		
Distance Between the Tips	1100mm		
Spiral Angle	30°		
Height Adjustment	Hydraulic		
Lower Section	Hardened		
BASE CUTTER			
Drive	Hydraulic and reversible		
Number of Discs	2, identical and reversible		
Number of Knives	8, removable, 4 edged		
Distance Between Center of Discs	495 mm		

L = Litre



# Optional items are available as standard features in special edition variant

FACTORY-FITTED ITEMS

- Air-conditioned cab with 2 doors
- Sky Watch™
- Windshield wipers
- 2 rear view mirrors
- Dash board lighting
- Tachometer and hour meter of the engine
- Fuel level gauge
- Engine oil pressure indicator
- Temperature indicators of the hydraulic oil and engine water
- Battery voltage indicator
- Indicator of hydraulic pressure at base cutter and chopper
- Safety relays
- Safety brake
- Gyroflex
- Quartz halogen headlights mounted on the cab

Optional Items#

- Smart Reversible Fan
- Smart Eye Camera
- Disc-O-Gather Topper
- Antivortex Fan™

# COMPLETE MECHANIZED SOLUTION FOR SUGARCANE CULTIVATION



SUB-SOILER



MB PLOUGH



POWER HARROW



LASER LEVELER



SUGARCANE PLANTER



MULTIROW WEEDER



SHREDO MULCHER



SQUARE BALER



GYRO RAKE



SUGARCANE HARVESTER



BOOM SPRAYER



DISC-OFF-BARRER