

AFS[®] CONNECT



- FLEET MONITORING
- AGRONOMIC MANAGEMENT
- DATA MANAGEMENT

CASE IH

CONNECTED PORTALS

MY CASE IH AND AFS CONNECT

Brazilian farming is more dynamic and advanced each day. This reality brings us new challenges, but also great opportunities.

And for this it is necessary to reinvent new ways of managing all the stages of a farm's production process.

The connected portals have arrived to be your great partner on this evolution of digital farming, ensuring the full control of its operation, at all moments, from wherever you and your team may be.



1. MY CASE IH

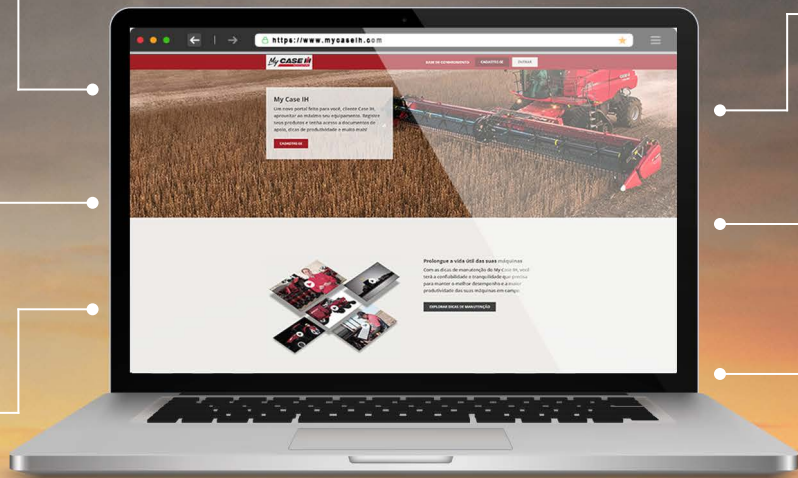
Communication channel between Case IH and the final client, as well as being a gateway to the AFS Connect portal.

2. AFS CONNECT

Case IH digital agriculture platform, everything you need in an easy, fast and intuitive way.

3. FLEET MONITORING

Follow in real time what your machine is doing, besides being able to consult historical information and access live monitors.



4. AGRONOMIC DATA MANAGEMENT

All your farm data being managed on your computer or in the palm of your hand. It has never been easier to manage harvesting, planting, spraying, and other data.

5. DATA MANAGEMENT

Intended as an open platform, AFS Connect integrates agronomic and fleet data with the main brands in the market.

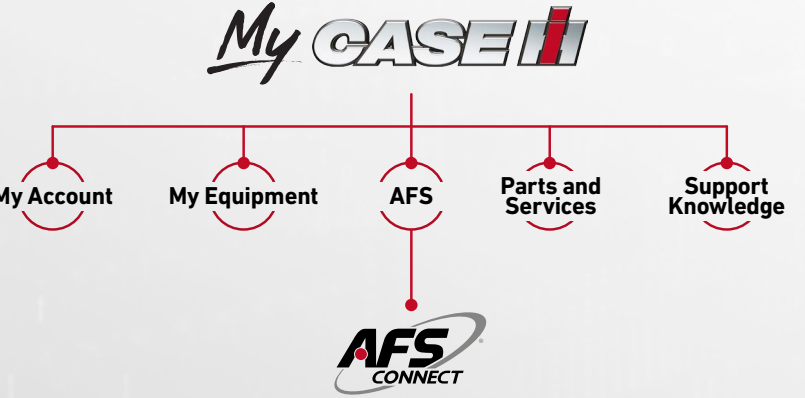
6. AFS CONNECT CENTER

Case IH Advanced Connectivity Center.



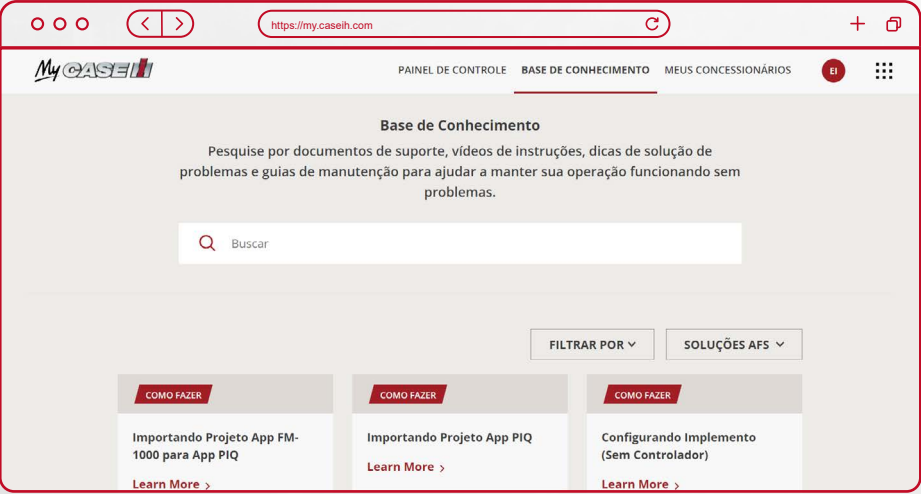
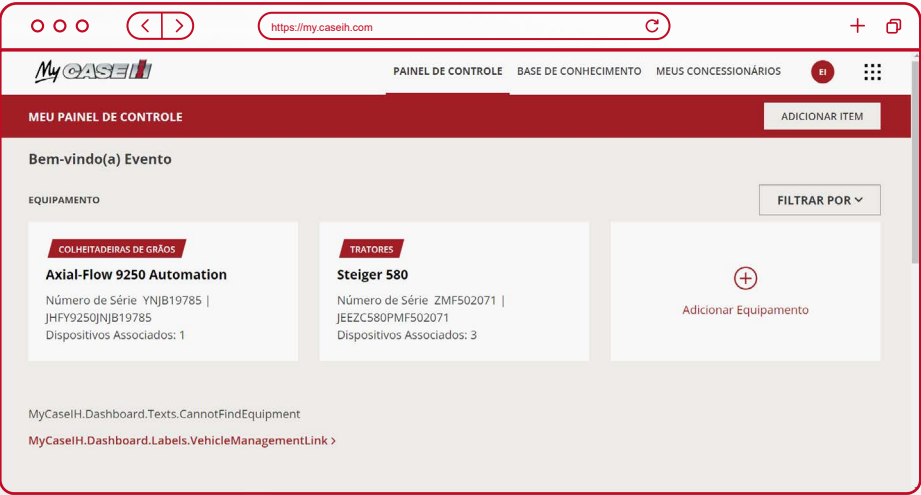
1. MY CASE IH

The **My Case IH** is the relationship portal that brings together all Case IH solutions in a single place. With a single login and password, you access documents, manage your fleet of AFS machines and devices, access our knowledge base, and it's also the gateway to the AFS Connect portal.



- **Single sign-on concept:** only one user and password to access all the brand's services.
- Dealer association for **telematics subscription management**.
- Access to the **Knowledge Base:** operator manuals, technical specifications, brochures, tutorials, photos, installation instructions, maintenance tips, and many other contents,
- **My Brand** and **My Account** to facilitate your access to preferences and information.

ALL CASE IH SOLUTIONS IN ONE CLICK, IN ONE PLACE.
SIMPLE, PRACTICAL, INTUITIVE AND SAFE!



MY CASE IH IS DIVIDED INTO TWO SECTIONS



MY BRAND

Machine and Device Overview + Supporting Documents

The **My Brand** section will provide the customer with an overview of his fleet (machines + equipments). The other great resource is the Knowledge Base, in which various technical information, articles, and tips are shared.

Website

On the **My Case IH** product page, the customer can find the catalog for any machine. To enable this, **My Case IH** is linked to the **Case IH** website system, on which the catalogs are uploaded.



MY ACCOUNT

Machine and device management

In the **My Account** section, the customer will be able to modify his information. In addition to changing user information, he can rename his machines or create user accounts.

AFS Connect

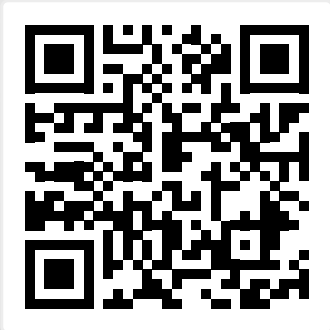
The **AFS Connect** does not affect **My Case IH**, but rather the opposite. Besides being the access point, **My Case IH** is the platform on which the customer can modify some **AFS Connect** settings (language and measurement units).



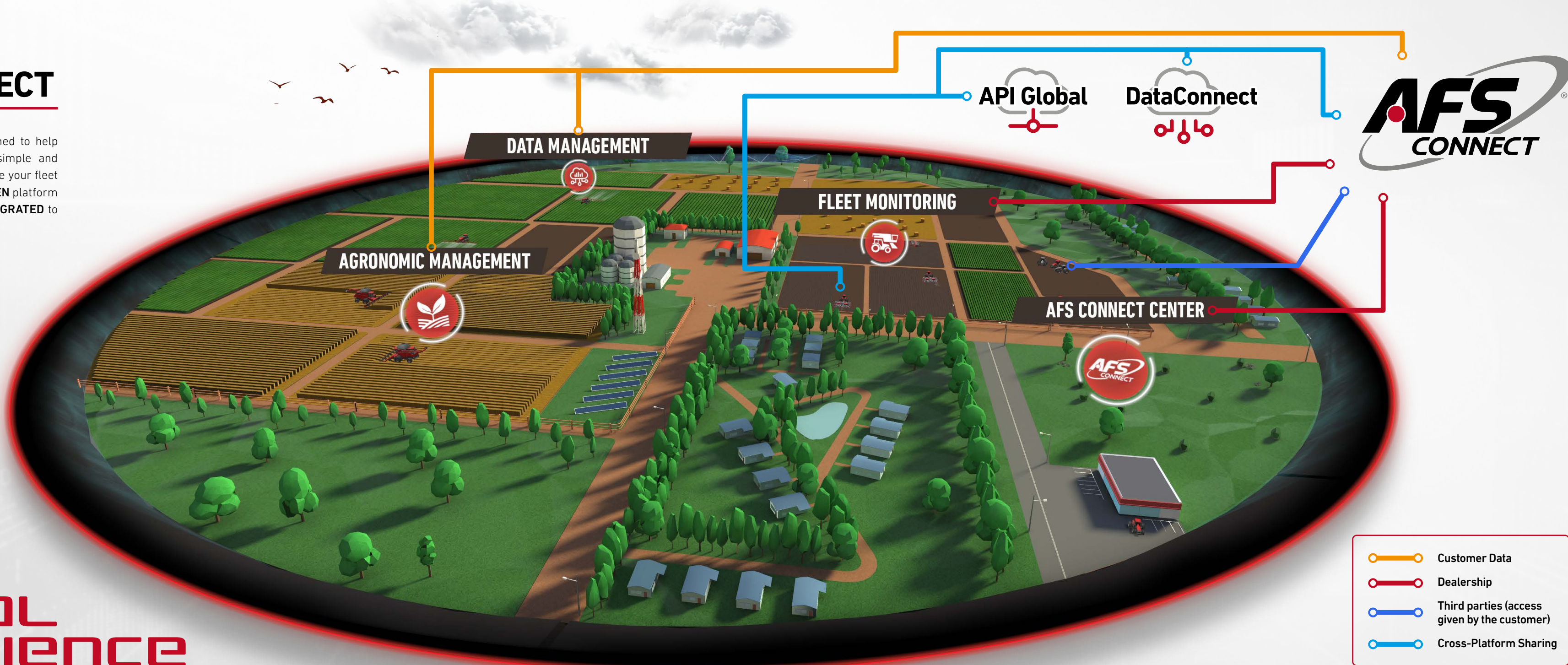
2. AFS CONNECT

The **AFS Connect** portal was designed to help decision making in real time. In a simple and intuitive environment, you can visualize your fleet and manage your operations in an **OPEN** platform so that **DATA** of all types can be **INTEGRATED** to facilitate the **PRODUCER's** daily work.

ACCESS VEX AFS CONNECT



virtual
experience



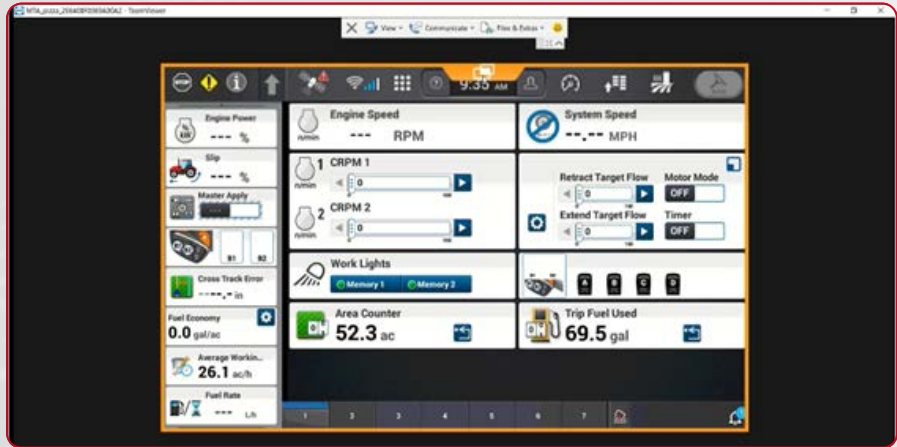
3. FLEET MONITORING

INFORMATION OF YOUR MACHINE IN REAL TIME

With Case IH's fleet monitoring solution, you can access your machine's data from wherever you want. All you need is a computer, tablet or even a connected smartphone using our application **AFS Connect Fleet**.

This section of our portal, focused on mechanical availability and operational efficiency, displays information such as:

- Overview;
- Alerts;
- Details;
- Notifications;
- Parameter;
- Creating a new notification;
- Column configuration;
- Reports;
- Map view;
- Live access to the machine monitors.





4. AGRONOMIC DATA MANAGEMENT

HOW TO ENSURE THE EFFICIENCY OF YOUR FARM!

Managing your agronomic data for quick and accurate decision-making is much easier with AFS Connect, which can also be accessed via the AFS Connect Farm app. The agronomic data are automatically processed and interpolated by our portal via file transfer, thus eliminating the need to go to the machine and manually load the data into the *software*.

Within this feature, you can also find:

- Registers
- Import and export of files (remote seeding to the monitor)
- Custom Captions
- Analytical Maps
- Fleet information
- Virtual fence
- Reports



5. DATA MANAGEMENT

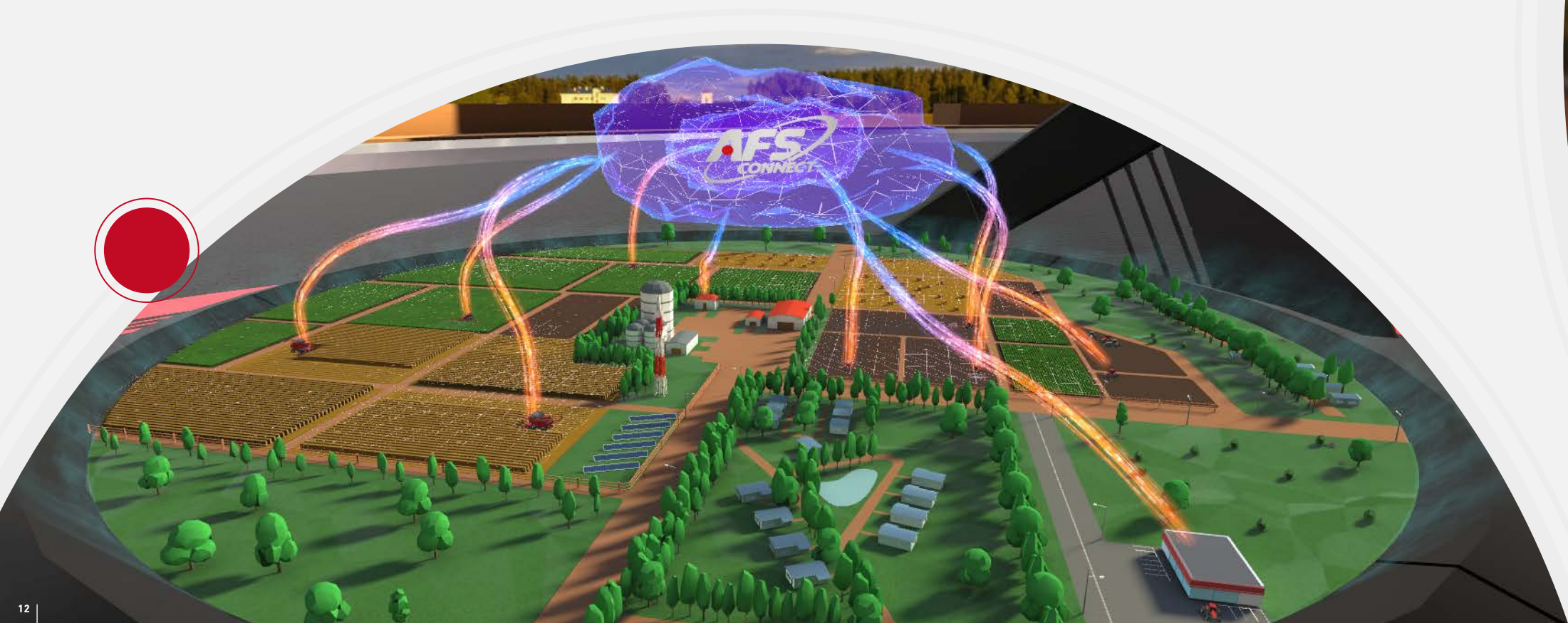
OPEN PLATFORM TO MAKE THE PRODUCER'S LIFE EASIER

Case IH values the flexibility and openness of its solutions, so it would be no different with AFS Connect. Several integrations are already in place to connect our portal to other digital farming solutions (My Easy Farm, Trimble, AgStudio, Cropwise, FarmersEdge). And yet new partnerships will be established to enrich the portal and practicality to the final client.

These partnerships draw on both agronomic data and machine information from other brands, such as DataConnect.

WHAT IS DATACONNECT?

This is a partnership between CNH Industrial, John Deere, Claas, and 365FarmNet in which the main objective is to allow customers who work with fleets of different brands to view telemetry data within a single portal of their choice. This way, customers who have Case IH and John Deere and/or Claas machines with telemetry will be able to view data from these machines within AFS Connect, making their daily routine easier and consolidating information from the machines in a single portal.



6. AFS CONNECT CENTER

TRAINED PROFESSIONALS MONITORING YOUR MACHINES IN REAL TIME!

The AFS Connect Center is a machine monitoring site in our factory and also spread throughout the dealer network, focused on mechanical availability and operational efficiency, where professionals are dedicated to checking machine indicators and alerts in order to contact dealers and customers as soon as possible and perform proactive maintenance on the machine before it even stops, thus avoiding higher maintenance costs and downtime.

The remote access tools are also ready to assist in diagnostics and possible problem solving at a distance, which results in agility and cost savings in travel and man-hours.





CASE IH



0800 500 5000
WhatsApp +54 11 2034-1546

Customer Relationship
Center. 24 hours a day,
7 days a week.

caseih.com/latam/es-latam

YouTube Instagram Facebook CaseIH