

# FARMALL TRACTORS

STRENGTH, ECONOMY AND OPERATIONAL EASE

MODELS 80 – 90 – 100



**CASE IH**



# POWER, ROBUSTNESS AND VERSATILITY.

## THE BEST PERFORMANCE IN ANY ACTIVITY.

The high technology and reliability that only the Case IH brand offers reaches the low power tractors. The farmer has one more option to improve performance and productivity with the Farmall range of 80, 90 and 101 hp tractors. These tractors are recognized worldwide for their robustness, simplicity of operation and flexibility of use.

Following the worldwide Case IH brand patterns, Farmall tractors have a new modern and bolder design.

Due to their high versatility, Farmall tractors can be used in a wide range of applications (for ranchers, grain producers, coffee and sugarcane growers, as well as horticultural producers) and different property sizes.

Farmall tractors are specially developed for crops, pastures and special tasks. All three models are perfect for the farmer who needs a highperformance, fully reliable machine that can serve him in a variety of applications.

The new Farmall line engines are turbo intercooler and offer high torque and are ready for all the challenges of the field. The engines also have Tier 3 (MAR-I) emission level.

**FARMALL TRACTORS**  
VERSATILE, ROBUST AND RELIABLE



### ADVANTAGES

#### ■ EXTREMELY SAFE AND COMFORTABLE CAB.

The operator feels safe and comfortable in the Farmall tractor cab, with large glass doors and windows, ergonomically positioned controls and a fully adjustable suspension seat. The platform versions have a safety arch made of high strength steel in accordance with safety standards.

#### ■ POWER AND FLEXIBILITY.

Modern high torque direct injection diesel engines are offered in turbocharged versions that provide real gain in any agricultural operation.

#### ■ 12X4, 12X12 AND 20X12 WITH SYNCHRONIZED GEARSHIFT TRANSMISSION.

With three transmission options, providing smooth and easy shifting and offering the proper speed that results in maximum productivity, Farmall tractors allow the farmer to choose the best gear according to the intended application for his tractor.

#### ■ EASY TO OPERATE.

Farmall tractors feature excellent maneuverability with a low center of gravity and a turning radius of 3.9 meters. They provide the operator with optimal conditions during conventional traction operations or front load implement work.

#### ■ WELL SIZED HYDRAULIC SYSTEM FOR HIGH PRODUCTIVITY.

A 44.5 L / min high-flow pump powers the three-point hitch system, providing a high lift capacity, Farmall 80, Farmall 90 and 100, with 3,600 kgf (eye lifting capacity). Two remote valves are available to drive pumps, pistons and attachments mounted at the rear. Farmall tractors can easily perform a wide variety of farming activities.

#### ■ POWER IN PTO.

Two-speed power take-off (PTO), 540, 540E and 1,000 rpm (optional), giving the farmer the option of more power or more economy.



# ENGINE

## POWER AND TORQUE FOR BETTER PERFORMANCE.

### MORE POWERFUL, ECONOMICAL AND LESS POLLUTING ENGINE.

This new line of high performance diesel engines offers all the power the producer needs in a tractor for various applications. Not only are the new engines quieter and less polluting, they consume less fuel and have low cost maintenance.

Without giving up power and durability, Farmall tractors deliver unmatched performance in any farm activity.

### MORE STRENGTH FOR MORE EFFICIENCY AND HIGHER PRODUCTIVITY.

Farmall engines produce high power output for efficient operation, either with PTO or harvesting, planting and loading equipment. From increased torque, tractors can carry loads at a speed of up to 30 km/h on the road and face heavy ground conditions without losing power.

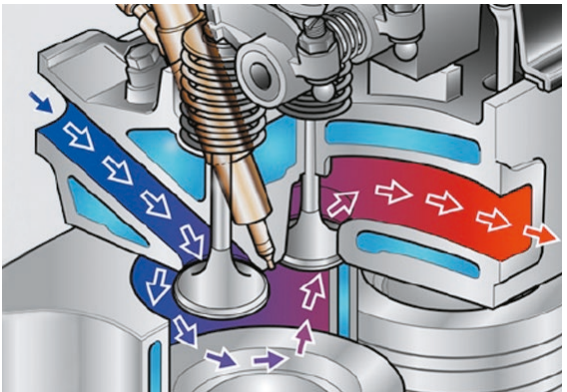
### THREE POWER TYPES TO CHOOSE FROM.

Farmall tractors have a 3.9-liter and 4-cylinder engine, with power of 80, 90 and 101 hp.

The block structure of the new engines has been engineered with advanced engineering to minimize noise and vibration levels and increase torsional stiffness. In addition, endurance and performance are increased, resulting in an exceptionally favorable weight-to-power ratio

## FARMALL TRACTORS

EXCELLENT WEIGHT-TO-POWER RATIO FOR HEAVY DUTY  
AND DIVERSE APPLICATIONS.



Available for all models, the newest generation of diesel engines produces up to 27%\* more torque, resulting in exceptional engine performance.

CrossFlow cylinder head design allows for reduced fuel consumption. All models are turbocharged with intercooler.

Torque reserve of 27% for Farmall 100 and 26% for Farmall 80 and 90.

	FARMALL 80	FARMALL 90	FARMALL 100
Rated power	80 cv	90 cv	101 cv
Type	Turbocharged with intercooler	Turbocharged with intercooler	Turbocharged with intercooler
Number of cylinders	4	4	4
Capacity	3,9 l	3,9 l	3,9 l
Rated engine speed	2.400 rpm	2.400 rpm	2.400 rpm
Torque increase	26%	26%	27%



**PERFORMANCE  
FOR YOUR OPERATION**



# TRANSMISSION, AXLES, BRAKES AND STEERING

## FARMALL DRIVE SYSTEM FOR EXCELLENT MANEUVERABILITY.

Farmall models can be equipped with several fully synchronized transmission options, including an optional gearbox for low speeds. The simple and robust design of these transmissions incorporates carefully distinct gear ratios that are designed to meet all agricultural applications.

Combining the great ground clearance and excellent maneuverability provided by the steering and brake systems, Farmall tractors are reliable and safe to operate quietly and economically in all activities.

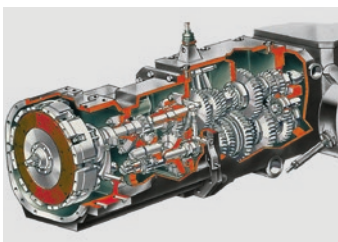
### GREATER OPERATIONAL FL EXIBILITY: BETTER PERFORMANCE, HIGHER PRODUCTIVITY.

A 20x12 low speed transmission is off ered for services that require lower speeds. This transmission offers extremely low speeds from 300 meters per hour.

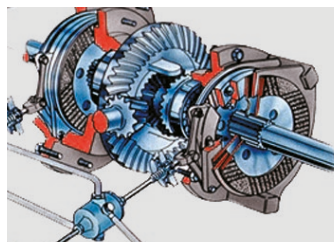
### SHUTTLE COMMAND AND PRECISE STEERING FOR EXCEPTIONAL MANEUVERABILITY.

The synchronized front/rear Shuttle Command can be operated while the tractor is moving by depressing the clutch pedal to facilitate loading and maneuvering work in sheds or nurseries where space is limited.

With a 50° wheel tilt angle, the operator has more control in tight spaces and on the headlands, which reduces ground and tire damage.



Tested and approved design with robustness for maximum power and torque transfer.



All Farmall tractors are equipped with mechanically actuated oil-bath disc brakes.



In the 12x12 and 20x12 transmissions, shifting is effortlessly accomplished via the Shuttle Command, which is installed on the operator's left side.

### MORE STABILITY IN OPERATION.

By selecting four-wheel drive, more power is converted to traction, giving the operator more stability, greater ground traction and better fuel efficiency. The fully integrated fourwheel drive system is electro-hydraulically driven via a button on the instrument panel.

### HIGHER BRAKING POWER, GREATER SAFETY.

On all four-wheel drive Farmall tractors, the system features self-adjusting disc brakes and positive straight braking with low pedal effort.



### POWERSHUTTLE TRANSMISSION

At the top of the line, we now off er the PowerShuttle reverse gear transmission, where the big diff erential is the smooth and precise electro-hydraulic reverser, which allows the tractor to move forward and backward without using the clutch, ensuring more agility, comfort, performance and speed in maneuvers, as well as economy of the clutch. Available for 12x12 transmission only.



All transmissions feature ergonomically positioned control levers

Maximum traction force is achieved by its four-wheel drive and diff erential lock.

All models feature electro-hydraulic front-wheel drive.







# HYDRAULIC SYSTEM AND PTO

## ALL THE POWER YOU NEED

Farmall tractors are equipped with a unique high power pump, two remote control valves and multipurpose power take-off (PTO). This equipment provides great work capacity regarding power and control.

Whatever work the farmer has to do, Farmall tractors are fully prepared to meet the needs.

### **SPEED, CONTROL AND SECURITY AT THE SERVICE OF PRODUCTIVITY.**

The easy-to-operate, high-flow hydraulic system is powered by a fully independent pump with 44.5 L/min flow capacity and a unique 29 L/min capacity hydraulic pump for the steering system.

The result is fast and safe operation during articulation, loading and trailer loading operations. The three-point hitch system offers all models a lifting eye capacity of 3,600 kgf.

### **BETTER THREE-POINT HITCH CONTROL.**

Using Mechanical Hitch Control (MHC), the operator can lift and lower the system by simply pressing a key, without having to move the coupling and positioning levers.

The four-position sensor control lever adjusts the fast/slow lift response, while the lowering speed is easily adjusted via an under-seat control.

### **VERSATILITY TO OPERATE ON MANY FRONTS.**

Farmall tractors are designed to operate in a wide variety of agricultural applications. Two auxiliary valves are available for front mounted pumps, pistons, trailers and attachments, each with its own control lever installed on the right side of the operator seat.

### **POWER OR ECONOMY, ACCORDING TO THE NEED IN THE FIELD.**

Farmall tractors are equipped with a two-speed 540/540E PTO system and 1,000 rpm (optional), offering the operator the choice of power and economy.

Speeds of 540, 540E and 1,000 rpm (optional for Farmall 80 and 90, standard on Farmall 100) can be selected via a lever behind the seat.

### **EFFICIENT POWER TRANSFER.**

The clutch transfers power to the implement without affecting tractor speed, combining performance and speed. The PTO shaft rotates freely when the engine is unplugged.



The remote valve auxiliary system offers two rear valves.



# OPERATOR'S CAB

## WORKING IN COMFORT, PRODUCING MORE.

The Farmall tractor cab provides the operator with a quiet and safe working environment that exceeds all legal requirements regarding noise and vibration levels. Equipped with all the features the grower expects from a Case IH tractor, the cab provides a comfortable environment for a highly productive working day.

### EASY ACCESS AND EXCELLENT VISIBILITY.

Non-slip steps provide secure cab access, and wide doors allow the operator to enter from either side of the tractor. The combination of the new, modern and bold, slanted and curved hood and all-glass doors offer exceptional visibility in all directions of the work area.

The wide and comfortable cabin with air-conditioning gives the farmer excellent climate control. Climate controls are installed easy to access at the cab roof. In addition, all cabs leave the factory with activated carbon, which is recommended for spraying operations.

### COMPLETE LIGHTING SYSTEM.

Cab-mounted high-power halogen headlights and a set of headlights provide the illumination needed for night work.

### TRACTORS WITHOUT CAB.

Farmall tractors are also available in the platform version, with safety arch made of high-strength steel, including a hardtop (roof). The safety arch can be easily folded and is useful for operations in low height locations.



Up to four adjustable service headlights can be installed in the cab to improve night visibility.

### PANEL WITH LOGICAL DESIGN, ERGONOMICS AND FUNCTIONALITY.

All operating controls are positioned within reach of the operator, both foot and hand. In front of the operator is a console with easy-to-read instruments, including oil pressure gauge, tachometer, air filter saturation gauge and fuel and coolant temperature gauges.

Position control of the hydraulic lift and remote valves is to the right of the operator. The Shuttle Command lever for synchronized forward/reverse gears is on the left side.

The PTO lever is positioned to the left of the operator, and the drive button is positioned on the machine panel.



1 Farmall models also offer a multi-adjustable seat.

2 Exceptional visibility in all directions.

**+COMFORT**  
**GREATER PRODUCTIVITY**





## MAINTENANCE AND SERVICE

### SIMPLIFIED SERVICE.

Reliability, long service life and low maintenance are essential to achieve maximum profit. Farmall tractors are designed and engineered to work hard for years, smoothly, at low maintenance cost, resulting in time and money savings.

### MINIMAL MAINTENANCE, MAXIMUM PRODUCTIVITY.

The producer doesn't even have to open the hood to perform the daily checks. Routine services can be performed from the ground, with excellent access from either side of the tractor. So you can work longer. With long service intervals and threaded oil filters, long service stops are a thing of the past.

### EASY ACCESS, FAST SERVICE.

The external air filter is easily accessible for replacement or cleaning. Access to key components is facilitated by the wide-open hood, which allows easy access to clean the radiator and, where applicable, the air conditioner heat exchanger.

### CHOOSING THE RIGHT EQUIPMENT.

To choose the right tractor for every need, contact your nearest Case IH dealer and see the wide range of additional equipment that is available for Farmall tractors.



# MAINTENANCE AND SERVICE



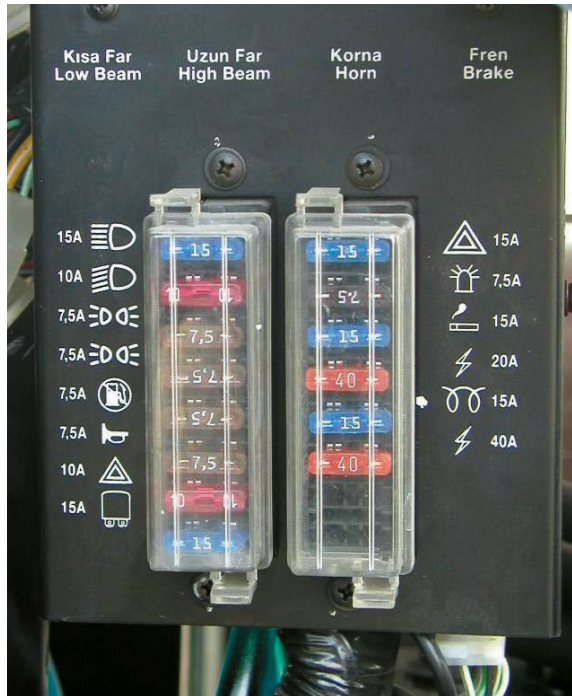
Removable condenser unit for easy cleaning.



The filter can be removed without tools, making maintenance faster.



Refueling from the ground with easily accessible filler neck.



All fuses are automotive-type and easily identifiable to make fault detection and replacement easier.



The battery is mounted under the engine hood at the front of the tractor.



Engine checking oil check without lifting the hood.

# RELIABILITY

LONG SERVICE LIFE AND LOW MAINTENANCE



# SPECIFICATIONS

MODELS	Farmall 80	Farmall 90	Farmall 100
ENGINE			
Number of cylinders / type	4 / Turbocharged with intercooler		
Bore / stroke	104mm/115mm		
Displacement	3.908 cm³		
Rated power (ISO TR 14396) @ 2,400 rpm	80 cv	90 cv	101 cv
Rated engine speed	2.500		
Max Torque (Nm) @ 1,400 rpm	300 Nm	330 Nm	380 Nm
Torque reserve	26%	26%	27%
Injection pump	Delphi		
Air cleaner	Double dry		
Cooling System	By water		
Fuel sedimentation filter	Standard		
Fuel tank	140 liters (87 main + 53 auxiliary)		
Exhaust	Muffler under the hood, side exhaust along column A		
CLUTCH			
Disc material	Cerametallic		
Drive	Mechanical		
TRANSMISSION			
Transmission type	Synchronized		
Speed (front and reverse)	12x4 / 12x12		
Creeper	20x12 (optional)		
Front and reverse mechanical reverser	Standard (12x4)		
Optional (12x12 or 20x12)	Standard (12x12 or 20x12)		
PowerShuttle hydraulic reverser	12x12 (optional)		
Lever position	Side		
DIFFERENTIAL LOCK			
Drive	Mechanical (Standard) / Electro-hydraulic (optional)		Electro-hydraulic (Standard)
Actuation	Rear Axle		
FRONT DRIVE AND STEERING			
Drive type	Electro-hydraulic		
Steering angle	55°		
Side axle oscillation	11°		
Minimum turning radius – 4WD	5,3 m		
PTO			
Mechanical drive	Standard		-
Electro-hydraulic control	Optional	Standard	
PTO speed (rpm)	540/540E (Standard) / 540/750/1.000 (optional)		540/750/1.000 (Standard)
PTO rated power @ 2,400 rpm (SAE J1995)	69 cv	76 cv	86 cv
Actuation	Independent		
Engine speed to 540 rpm at PTO	2.199 rpm		
Engine speed to 540E rpm at PTO	1.715 rpm		
Engine speed to 750 rpm at PTO	2.131 rpm		
Engine speed to 1,000 rpm at PTO	2.261 rpm		

MODELS	Farmall 80	Farmall 90	Farmall 100
HYDRAULIC SYSTEM			
System type	Open center		
Pump type	Gear		
Flow	44,5 l/min		
Implements	Category II		
Lift-O-Matic	Standard		
Remote control valve	Standard		
Number of remote control valves (Mechanical)	1 or 2		
Max pressure of hydraulic system	190 bar		
Steering system	Hydrostatic		
3-point hitch system control	MHC (mechanical control)		
Eye lift capacity	3.600 kgf		
Lift capacity at 610 mm of eye	2.200 kgf		
BRAKES			
Type	Oil bath disc		
Drive	Hydraulic		
Parking brake	Manual		
OPERATOR COMFORT			
Operator environment	Platform or cab		
Ergonomic arrangement of controls	Standard		
Digital hour counter	Standard		
DIMENSIONS			
Overall length	3,960 mm (platform) and 3,980 mm (cab)		
Overall height	2,630 mm (platform) and 2,800 mm (cab)		
Total width	1,910 mm (platform) and 1,910 mm (cab)		
WEIGHTS			
Front weights (40 kg)	4 or 8		
Rear weights (50 kg)	4 or 6		
Tractor weight without operator (platform version)	3.470 kg		
Tractor weight without operator (cab version)	3.630 kg		
TIRE AVAILABILITY			
Option 1 - 12.4-24-6PR-R1 e 18.4-30-10PR-R1	Yes	Yes	Yes
Option 2 - 12.4-24-6PR-R1 e 13.6-38-6PR-R1	Yes	Yes	Yes
Option 3 - 14.9-24-6PR-R1 e 18.4-34-10PR-R1	Yes	Yes	Yes
Option 4 - 14.9-24-6PR-R1 e 23.1-26-10PR-R2	Yes	Yes	Yes
Option 5 - 14.9-24-6PR-R1 e 18.4-30-6PR-R2	Yes	Yes	Yes
Option 6 - 14.9-24-6PR-R2 e 23.1-26-10PR-R2	Yes	Yes	Yes
Option 7 - 380/85 R24 R1W and 460/85 R34 R1W (radial)	Yes	Yes	Yes
Option 8 - HD 14.9-24 R1 12PR and HD 18.4-34 R1 14PR (forest)	Yes	Yes	Yes

CIH-IO-B1013 – 07/2022



24h 0800 500 5000

WhatsApp +54 11 2034-1546

Contact for Customer Service. 24 hours per 7 days a week.

caseih.com

CaseIH