

CASE II
AGRICULTURE

EARLY RISER[®]

2000 SERIES PLANTERS







EARLY RISER 2000 SERIES PLANTERS

4 Models | 12–47 Rows | 7"×7", 8"×8" or 12"×12" Frame Size

ACCURATE TECHNOLOGY. DURABLE BUILD. DEPENDABLE DESIGN.

From the rugged row unit to the industry's most accurate planter technologies, the 2000 series Early Riser planter operates at your speed to ensure faster, more uniform emergence and the best yield possible.

2000 SERIES EARLY RISER PLANTERS

Agronomic Drivers.	4–5	2160 Large Front-fold Planter	18–21
Early Riser Row Unit.	6–7	2150 Front-fold Planter.	22–25
High-efficiency Planting	8–9	2140 Pivot-transport Planter	26–29
Factory-integrated Precision Technology.	10	2130 Mounted Stack-fold Planter	30–33
Superior Singulation. Optimal Placement	11	Successful Seedbed	34–35
Early Riser Integrated Systems	12–13	Fertilizer Options.	36–37
Advanced Farming Systems (AFS).	14–15	Product Support Kits.	38–39
AFS Connect [™] Farm Your Way	16–17	Specifications.	40–43

AGRONOMICALLY DESIGNED FOR HIGH-EFFICIENCY PLANTING.

Planters should deliver accurate seed placement and depth control across varying soil and tillage conditions, as well as consistent seed-to-soil contact. Early Riser planters deliver the highest yield potential through superior agronomic performance. The row unit has unique design elements for how it engages the soil and addresses specific issues for improved seed environment. The result is faster germination and more uniform emergence for a better net-effective stand and better yield potential.

EVERY PLANT COUNTS.

That's why the 2000 series Early Riser planter is designed to quickly recognize and accommodate varying conditions, delivering consistently accurate seed placement and depth control. Built on Agronomic Design™ principles and equipped with the latest Case IH and Precision Planting® technologies, this planter is engineered to deliver the highest yield potential possible through superior agronomic performance.

The 2000 series Early Riser planter is a perfect complement to any high-efficiency soil management system. With proper seedbed preparation from using Case IH tillage tools that set your fields for success, you can boost your planter productivity even more.



SIX PRIMARY DRIVERS OF SEED PLACEMENT ACCURACY WHEN PLANTING.

Producers should consider six agronomic drivers of seed placement accuracy at planting time. Depending on the type of seed and field conditions, certain drivers may have more or less importance:

1 Proper seed depth

2 Uniformly correct seed depth across the planter and throughout the field

3 Good seed-to-soil contact

4 Uniformly correct soil pressure all around the seed

5 Accurate seed population

6 Accurate in-row seed spacing

primary drivers of

Photocopy Plants:
potential to impact corn yields by
9%–22%¹

drivers of

Picket Fence Stands:
potential to impact corn yields by
2%–4%²

1. Yield impact statistics based upon Purdue University Department of Agronomy Publication AGRY-91-01 "Stand Establishment Variability in Corn".

2. Yield impact statistics based upon Purdue University Department of Agronomy Publication AGRY-91-01 "Stand Establishment Variability in Corn".
Based on a 200-bushel yield potential and 26,000 to 30,000 seeds per acre with spacing variability with standard deviation of about 2 inches.

YIELD COMPARISON:

Competitions' Definition of Accuracy – Picket Fence Stands



1 = one more plant, emerged uniformly or spaced accurately and contributing to yield every 17 ft. 6 in. = **1,000 more plants per acre**

$1,000 \times 0.4 \text{ lb. (grain weight of an average ear)} = \mathbf{400 \text{ lbs. per acre}}$

$400 \text{ lbs. per acre} / 56 \text{ lbs. per bushel} = \mathbf{7 \text{ bpa increase}}$

$7 \times \$3.50 \times 1,000 \text{ acres} = \mathbf{\$24,500 \text{ per year}}$

Case IH Definition of Accuracy – Picket Fence Stands With Photocopy Plants



A SUPERIOR ROW UNIT DESIGN.

The Early Riser row unit has unique design traits for an improved seed environment, which results in faster germination, more uniform emergence, better net-effective stand and a higher yield potential.

■ Offset Disk Openers.

- Slice residue, while allowing better seed-to-soil contact
- Ability to penetrate hard soils
- No-till coulter not required

■ Pulled Gauge Wheels.

- Less bulldozing in light soils
- Less rolling resistance over uneven terrain
- No maintenance, no greasing

■ Inverted Closing Disks.

- Squeezes trench closed
- Does not disturb moisture line
- Maintains consistent soil density

■ RID Gauge Wheels.

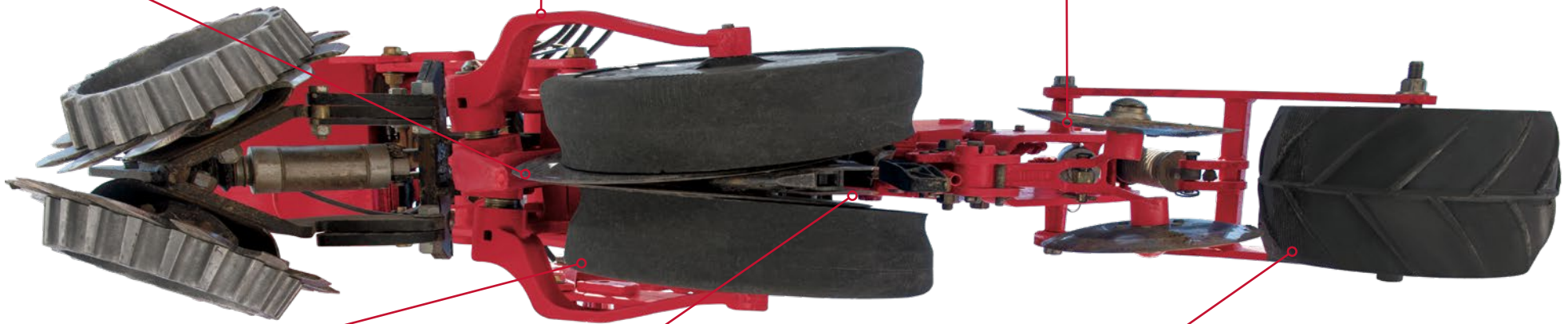
- Reduced sidewall compaction
- Allows improved early root development

■ Furrow Forming Point and Seed Shoe.

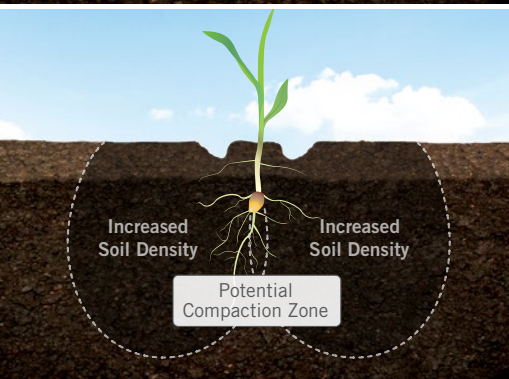
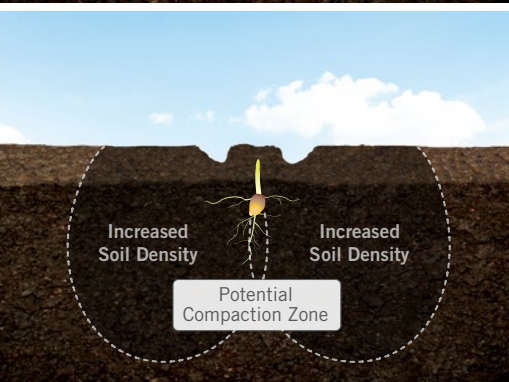
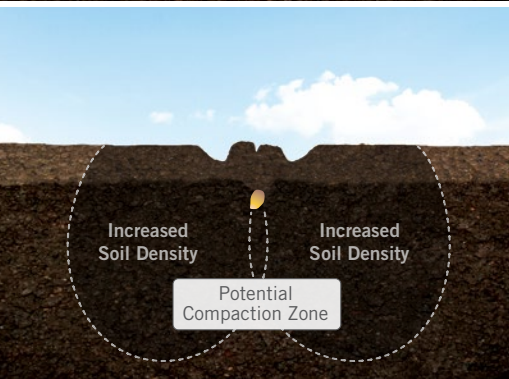
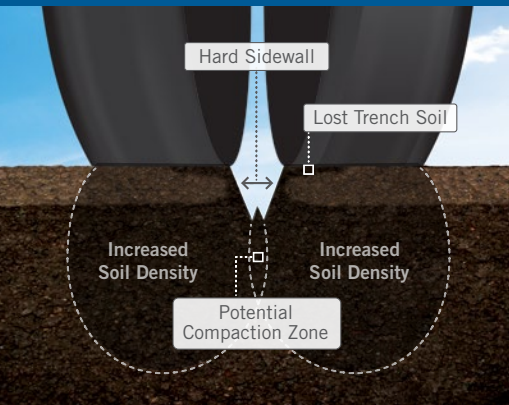
- Flat bottom seed trench for consistent depth
- Uniform moisture and temperature to seed

■ Press Wheel.

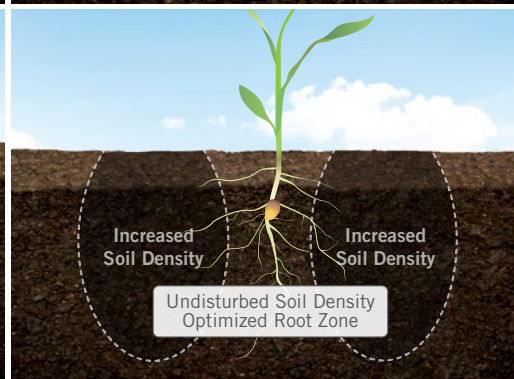
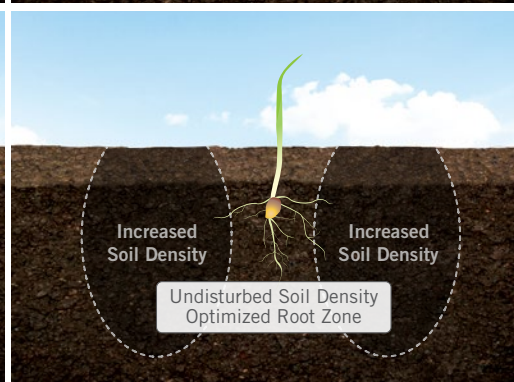
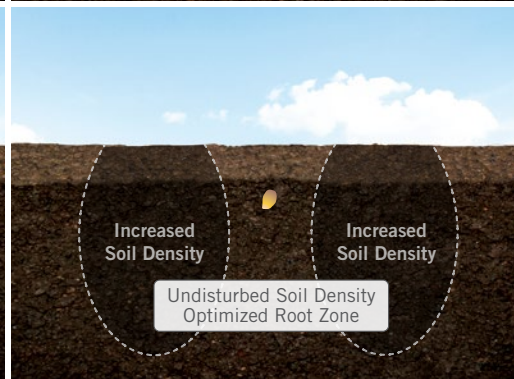
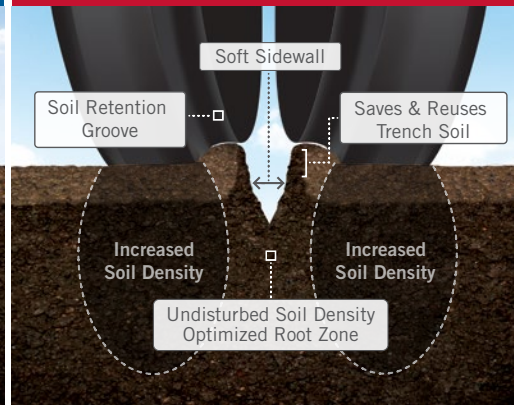
- Firms soil, improving seed-to-soil contact
- Channels moisture
- Emergence cracks for surface crusting



COMPETITIVE ROW UNIT



EARLY RISER ROW UNIT

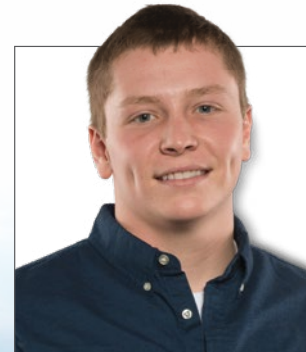


PRODUCER EXPERIENCES FROM THE FIELD.



"One of the best features of my 2150 planter is the **ruggedness**. We've been able to run 6 to 6.5 mph — about 1.5 mph faster than we're used to — and we did not see any change in our plant stands. By traveling at a higher speed, **we can cover nearly 40 more acres per day without compromising accuracy**, which is huge."

—Kevin Smith



"The two-stage closing system on my 2150 planter **helps eliminate sidewall compaction** in the spotty areas of my field that get a bit wetter. It helps me make sure I close each seed trench properly, **so we get uniform emergence across the whole field.**"

—Nate Leystra



STAY AHEAD WITH HIGH-EFFICIENCY PLANTING.

From a rugged row unit to the industry's most accurate Precision Planting technology, the Early Riser 2000 series planter is built to get the job done with unmatched accuracy and efficiency.



MORE ACCURACY.

- **Factory-integrated Case IH and Precision Planting technology** customized to your farm's soil types, terrain, fertilizer and chemical application needs, and crop residue management practices.
- The optional, factory-fit Precision Planting WaveVision® seed sensor helps producers achieve accurate seed placement in high-dust and extreme residue conditions.
- Fully integrated **liquid fertilizer systems**, from variable rate control and row-by-row shut-offs to in-furrow or 2×2 in soil application specifically designed for the 2000 series Early Riser planter lineup.
- Low-maintenance, **electrically driven metering system** delivers accurate and consistent seed singulation, population and in-row spacing.
- Industry's only **flat-bottom seed trench** provides proper depth and more consistent seed placement while improving seed-to-soil contact.

MORE DURABILITY.

- **Rugged row unit** built for unrivaled accuracy and dependability — from 4 mph to 10 mph.
- **Heavy-duty cast components** stand up to increased speeds and tough, fast-changing conditions.
- **26-inch toolbar clearance**, plus a **60% increase in vertical row unit travel** to accommodate rapid terrain changes.

MORE PRODUCTIVITY.

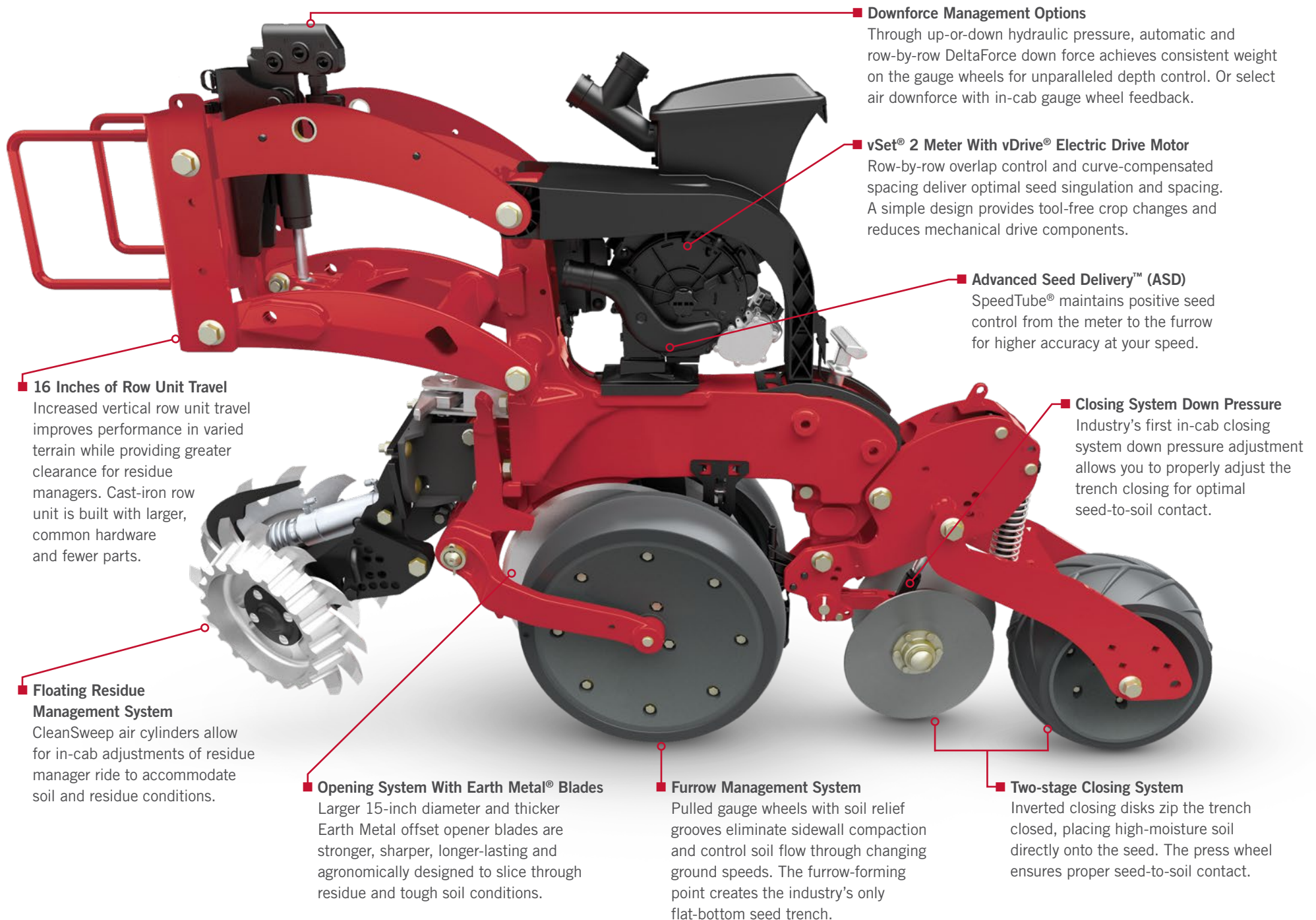
- Choose between **1.9-bushel on-row hopper** (2130 and 2150), or **bulk-fill systems** ranging from 50 bu. to 120 bu. depending on model.
- Reduced maintenance and **tool-free crop changes and adjustments** keep you in the field to cover more acres with greater speed and efficiency.
- **Automatic and in-cab adjustments** help you quickly adapt to unique field conditions:
 - Row-by-row hydraulic up/downforce control with DeltaForce®
 - Speed-compensated vacuum
 - No-till floating residue managers with CleanSweep® air cylinders
 - Air closing system with up to three times the force of a spring
 - Hydraulic wing downforce
 - Auxiliary alternator automation
 - Individual row shut-offs for seed and fertilizer and granular chemical
 - Automatic curve compensated spacing

Model	2130	2140	2150	2160
Seed Capacity	12-, 16- or 18-row	23-, 24-, 31- or 32-row	12-, 16- or 24-row	24-, 32-, 36-, or 47-row
On-row Hopper	1.9 bu. (67 L)	N/A	1.9 bu. (67 L)	N/A
Bulk-fill	50 bu. (1 762 L)	80 bu. (2 819 L)	100 bu. (3 524 L) ¹ ; 120 bu. (4 229 L) ²	120 bu. (4 229 L)

¹12- and 16-row configurations; ²24-row configuration

 Precision
Planting®

ONE ROW UNIT, MULTIPLE POSSIBILITIES.



■ **16 Inches of Row Unit Travel**
Increased vertical row unit travel improves performance in varied terrain while providing greater clearance for residue managers. Cast-iron row unit is built with larger, common hardware and fewer parts.

■ **Floating Residue Management System**
CleanSweep air cylinders allow for in-cab adjustments of residue manager ride to accommodate soil and residue conditions.

■ **Opening System With Earth Metal® Blades**
Larger 15-inch diameter and thicker Earth Metal offset opener blades are stronger, sharper, longer-lasting and agronomically designed to slice through residue and tough soil conditions.

■ **Furrow Management System**
Pulled gauge wheels with soil relief grooves eliminate sidewall compaction and control soil flow through changing ground speeds. The furrow-forming point creates the industry's only flat-bottom seed trench.

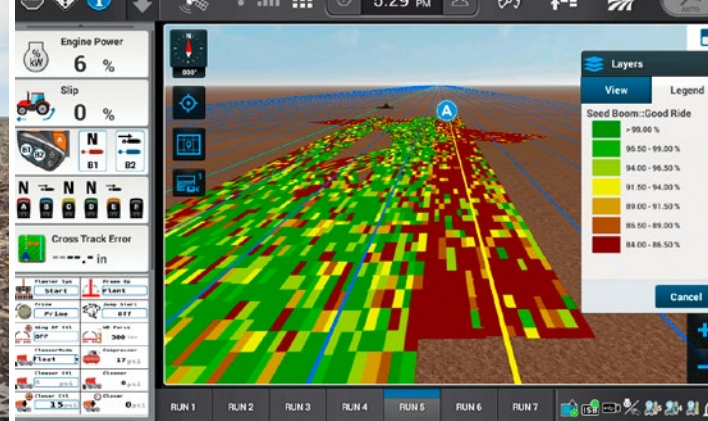
■ **Downforce Management Options**
Through up-or-down hydraulic pressure, automatic and row-by-row DeltaForce down force achieves consistent weight on the gauge wheels for unparalleled depth control. Or select air downforce with in-cab gauge wheel feedback.

■ **vSet® 2 Meter With vDrive® Electric Drive Motor**
Row-by-row overlap control and curve-compensated spacing deliver optimal seed singulation and spacing. A simple design provides tool-free crop changes and reduces mechanical drive components.

■ **Advanced Seed Delivery™ (ASD)**
SpeedTube® maintains positive seed control from the meter to the furrow for higher accuracy at your speed.

■ **Closing System Down Pressure**
Industry's first in-cab closing system down pressure adjustment allows you to properly adjust the trench closing for optimal seed-to-soil contact.

■ **Two-stage Closing System**
Inverted closing disks zip the trench closed, placing high-moisture soil directly onto the seed. The press wheel ensures proper seed-to-soil contact.



ADAPTS TO MEET YOUR FIELD CONDITIONS.

HIGHLY RESPONSIVE.

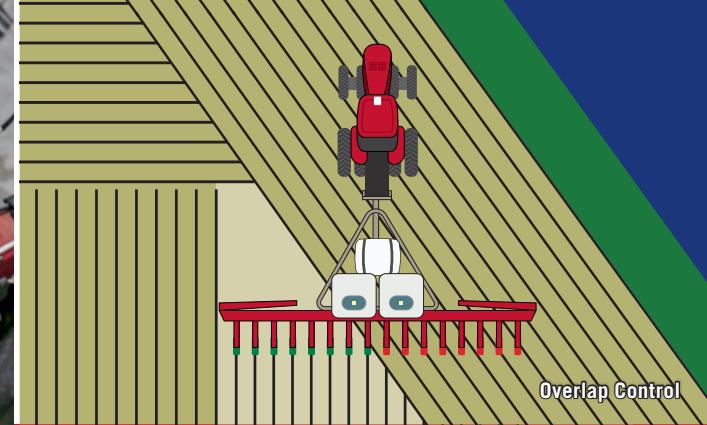
- **Heavy-duty design and components** provide excellent row unit stability for truer travel on hillsides and around curves.
- **High-clearance frame and increased row unit vertical travel** accommodates rapid terrain changes without sacrificing accurate seed depth for more consistency across more varied terrain.
- **Residue managers have more room to work**, and there's more relief — and reduced likelihood of damage — for stubborn obstacles like rocks.

ACCOMMODATE RAPID TERRAIN CHANGES.

- Choose from the AFS Pro 700 with Legacy Planter Control, the AFS Pro 1200 with ISOBUS Planter Control—or even a competitive ISO-compliant display—to **make on-the-go planter adjustments and tailor settings from the cab** as field conditions dictate.
- **Wing downforce control** provides additional vertical stability to the toolbar wings, helping the row units maintain ground contact at high speeds and respond to changing terrain.
- Hydraulic row unit downforce provides **greater depth control consistency** and improved ride and stability at higher planting speeds.

DECREASE COMPACTION.

- **Designs with fewer tires** reduce wheel traffic and number of pinch rows — minimizing the chance of soil compaction, especially in a wet spring.
- **VF radial tires** carry loads more uniformly across their footprint, reducing compaction.
- **Factory track options** on 2140 and 2160 models.



SUPERIOR SINGULATION. OPTIMAL PLACEMENT.

ELECTRIC DRIVE SIMPLICITY.

- The **vSet 2 meter** and **vDrive electric drive** provide **precise per-row seed metering** with simplicity and less maintenance to provide picket-fence stands at your speed.
- Mini-hopper and single air-intake screen are **easy to access and clean**.
- Entire seed meter offers fast, **tool-free maintenance and adjustments** — even when switching between crops.

ADVANCED SEED DELIVERY.

- The Advanced Seed Delivery (ASD) option includes the **SpeedTube from Precision Planting** for the most accurate seed delivery and placement to and in the seed furrow.
- Available for corn, soybeans, cotton and sugar beets, the **SpeedTube belt** moves at a rate that increases and decreases with planter speed, ensuring optimal seed spacing by **reducing any tumbling of the seed in the furrow**.
- The **Advanced Seed Information (ASI)™** system gives you detailed row-by-row seed singulation and spacing information with warnings should a problem occur, so you can be confident that all systems are performing optimally.

CONSISTENT IN CURVES AND CONTOURS.

- With **Curve Compensation**, each row's seed meter adjusts independently around contours and irregularly shaped fields to provide consistent seed spacing whether the row unit is inside or outside the curve.
- **Overlap Control** (illustrated above) eliminates overspending on inputs by stopping seed delivery when the unit reaches previously planted ground. This also enhances agronomic yield potential by delivering the correct plant population.
- The **vDrive electric drive systems** achieve overlap control without clutches, which results in less maintenance.

FULLY INTEGRATED SYSTEMS FOR MAXIMUM EFFICIENCY.

You need reliable systems that are matched to your planter's capacity and can meet high-speed planting demands. With ISO Planter Control, you can visualize high-resolution, as-applied planting data in real time — all from one integrated display that is easy to navigate and customize to match your operation's needs.



PLANTER CONTROL SYSTEMS.

- Spend more time in the cab planting with **total planter control** and continuous, row-by-row performance feedback.
- **ISOBUS compatibility** means you can monitor your 2000 series Early Riser planter from most ISOBUS-compliant displays for easy plug-and-play operation.
- **High-resolution, as-applied planting data** and enhanced visualizations from grill to press wheel are made possible by the VisionPro operating system.
- **With AFS Connect 2-way file transfer**, share planter data with your home computer or a trusted adviser to gain valuable agronomic insights and make better, data-driven decisions.

INTEGRATED DISPLAYS.

- Choose from either the AFS Pro 1200 or AFS Pro 700 display to match your operation and equipment needs:
 - **AFS Pro 1200:** Offers a single-screen solution with an enhanced user interface for AFS Connect Steiger® or Magnum™ series tractor operators, delivering the full suite of ISOBUS planter software capabilities
 - **AFS Pro 700:** Offers a single-screen solution for other Case IH tractor models
- The AFS Pro 1200 takes **as-applied mapping** to the next level with:
 - Row-by-row visualization
 - Split-screen mapping
 - Six customizable windows
 - 3D implement modeling for accurate coverage maps

AUTOMATED SYSTEMS FOR SPEED AND EASE.

- **The vacuum, air, hydraulic and power systems** provide the vital components that keep the planter planting.
- **Automatic speed-adjusted vacuum control** ensures optimal meter performance at all speeds so you don't have to.
- **Stand-alone, fully protected electrical system** with automated alternator produces power as needed to reduce fuel consumption.
- **Heavy-duty air compressor** with high-performance air filter provides reliable performance.



TOOL-FREE ADJUSTMENTS.

- Many 2000 series Early Riser planter components — including the metering system and row unit settings — **provide tool-free crop changes and adjustments.** A streamlined design simplifies service access so you can make modifications quickly and efficiently.



EASY MAINTENANCE.

- Seed meter and crop conversion changes are tool-free with simple accessibility.
- Interchangeable components can be adjusted row by row and are automatically recalibrated on the AFS Pro 700 or AFS Pro 1200 display to provide reliable in-field diagnostics. This reduces downtime and operator input into the monitor.
- Plus, the design of the 2000 series Early Riser planters eliminates the mechanical components — hex shafts, bearings, couplers, sprockets, chains and clutches — needed to turn a conventional planter. **Fewer things to go wrong means reduced, simpler maintenance.**



QUICK-ADJUSTING T-HANDLE.

- **Quick-adjusting T-handle allows for depth adjustments** in 1/8-in. increments up to 3 5/8-in. depth.

OPTIMIZE PERFORMANCE WITH AFS TECHNOLOGY.

Follow the precise path of your tillage passes to perfectly place each seed using AFS AccuTurn™ and AFS AccuGuide™ autoguidance. Reduce plant crowding with automatic row-by-row overlap control and keep track of what you've planted with AFS Connect. AFS technology is at your side every step of the way to make the most of your planting season.



AUTOGUIDANCE.

- **AFS AccuGuide autoguidance:** Minimize skips and overlaps to save on inputs, fuel and labor.
- **AFS AccuTurn:** Ensure the planter is square after every turn to create uniform spacing between rows.
- **AFS RTK+ Cellular RTK Guidance (NTRIP):** Obtain sub-inch corrected positioning for autoguidance accuracy, less overlap and minimized plant crowding.

SECTION AND RATE CONTROL.

- All 2000 series planters come standard with the ability to run **overlap control, curve-compensated spacing and seed rate prescriptions.**
 - Planters equipped with liquid fertilizer have standard 3-section control, variable rate and the ability to run prescriptions
 - Planters equipped with granular chemical have row-by-row shut-offs and blockage sensing
- **Factory-installed Section & Rate Control:** Utilize all the agronomic advantages of section and rate control on Case IH equipment with the vDrive electric drive seed metering system.
- **Headlands Last feature:** Allows producers to plant headlands last for improved uniform plant emergence.
- Achieve **greater planting efficiency** when using multiple vehicles in the same field with AFS AccuSync.

AFS CONNECT.

- Maximize yield potential and minimize input costs by producing a prescription based on soil characteristics and previous yields. Then, upload prescriptions directly to machines using AFS Connect.
 - **Soil Map:** Analyze soil characteristics to determine the best population and seeding rates for different soil types or nutrients available
 - **Yield Map:** Analyze previous years' yield map to help determine the best variety, population and seeding rates based on the yield potential in the field
 - **Prescription Map:** Generate a planting or seeding prescription map using previous years' yield data and soil characteristics to maximize yield potential and minimize input costs
 - **As-applied Map:** Generate a map during planting or seeding to record rates for personal records and future analysis
 - **Boundary Map:** Use existing boundary maps to ensure correct seed placement throughout the field and to view information such as total acres planted or total acres remaining

AFS ACCUSYNC.

- Easily share real-time field logistics between multiple machines in the same field for a seamlessly connected operation promoting increased productivity and overall efficiency.
- Minimize overlaps or double planting as AFS AccuSync will shut off applicable planter row units so it does not double plant on already planted soil.



THE FREEDOM TO FARM YOUR WAY.

AFS Connect lets you monitor your farm, fleet and data, and remotely manage your operation anytime, anywhere.





FARM MANAGEMENT

Get more done each day with the ability to organize your fields, applications and agronomic data.

- View every field operation, from spring tillage to planting season and all the way through harvest.
- Generate satellite maps to help visualize multiple layers of agronomic data to gain better insights and make better informed decisions.
- Push guidance lines, boundaries and prescriptions to equipment remotely.



FLEET MANAGEMENT

Track and monitor your equipment to work smarter and achieve peak performance.

- View planter parameters remotely to ensure proper seed placement.
- Coordinate machine logistics to efficiently manage refueling, refilling and maintenance work during tight planting windows.
- Set alerts to warn if parameters fall outside acceptable ranges, including skips, singulation and doubles.
- Remote display viewing enables the farm manager or trusted partner to view what is on screen in the tractor cab*.

*Available on the AFS Pro 1200 display.



Model 2160	24R30	36R30	32R30	36R20	36R22
Rows	24	36	32	36	36
Spacing	30 in. (762 mm)			20 in. (508 mm)	22 in. (558.8 mm)
Toolbar	60-ft. toolbar	90-ft. toolbar	80-ft. toolbar	60-ft. toolbar	66-ft. toolbar
Center Section Tracks	24-in. tracks, 120-in. or 132-in. centers; steerable			18-in. or 24-in. tracks, 120-in. or 132-in. centers; steerable	18-in. or 24-in. tracks, 88-in. or 132-in. centers; steerable
Center Section Wheels	(4) 500/45R20 radial tires; walking tandems; steerable or fixed				





	47R15
	24 or 47
	30 in. (762 mm) or 15 in. (381 mm)
	60-ft. toolbar
n. or e	24-in. tracks, 120-in. or 132-in. centers; steerable

2160 *EARLY RISER*

LARGE FRONT-FOLD TRAILING PLANTER

STANDARD FEATURES:

- Factory-integrated Case IH and Precision Planting vSet meters for exceptional singulation and accuracy supporting a wide variety of crop types.
- Bulk-fill seed feeding system with two 60-bushel tanks for reliable seed delivery, no matter the seed population.
- Rugged row unit and heavy-duty components for maximum durability.
- Steerable center section tires.

OPTIONAL FEATURES:

- In-furrow liquid fertilizer and granular system with in-cab controls.
- Liquid fertilizer bulk-fill option at 600 gallons with built-in agitation.
- Bulk-fill seed tank scales.
- Steerable Rowtrac™ Carrier System.
- PTO hydraulic pump.



Steerable Rowtrac Carrier System

EARLY RISER 2160 LARGE FRONT-FOLD TRAILING PLANTER.

Designed to help you cover more ground in less time, toolbars ranging from 60 to 90 feet give you the efficiency needed to hit optimal planting windows. More acres, more efficiency, more productivity — that's the 2160 Early Riser planter.



MAXIMUM PRODUCTIVITY.

- Equipped with the capacity you need to **cover more acres in a day** — a great fit for large farming operations.
- Stay in the field longer with **more seed and liquid fertilizer capacity**.
- **Reduced maintenance and tool-free crop changes** and adjustments keep you in the field to cover more acres efficiently.
- Automatic and in-cab adjustments help you **quickly adapt to unique field conditions** for optimal performance.
- **Front-fold design delivers simple, narrow transport**, so you can travel from field to field and accommodate tight field entrances with ease.

AWARD-WINNING TRACK DESIGN.

- **Steerable Rowtrac Carrier System option** provides 74% increased flotation and a smoother toolbar ride for reduced soil disturbance and greater productivity.
- More square inches on the ground **improves flotation and yield potential** in wet spring conditions.
- Three-axis steerable track solution, an industry first, provides **better maneuverability** compared with wheeled carriers.
- **Balanced footprint** distributes weight evenly and consistently, reducing compaction and rutting on end rows.
- **One set of track paths controls in-field traffic** and reduces pinch row compaction.

SPLIT-ROW CONFIGURATIONS.

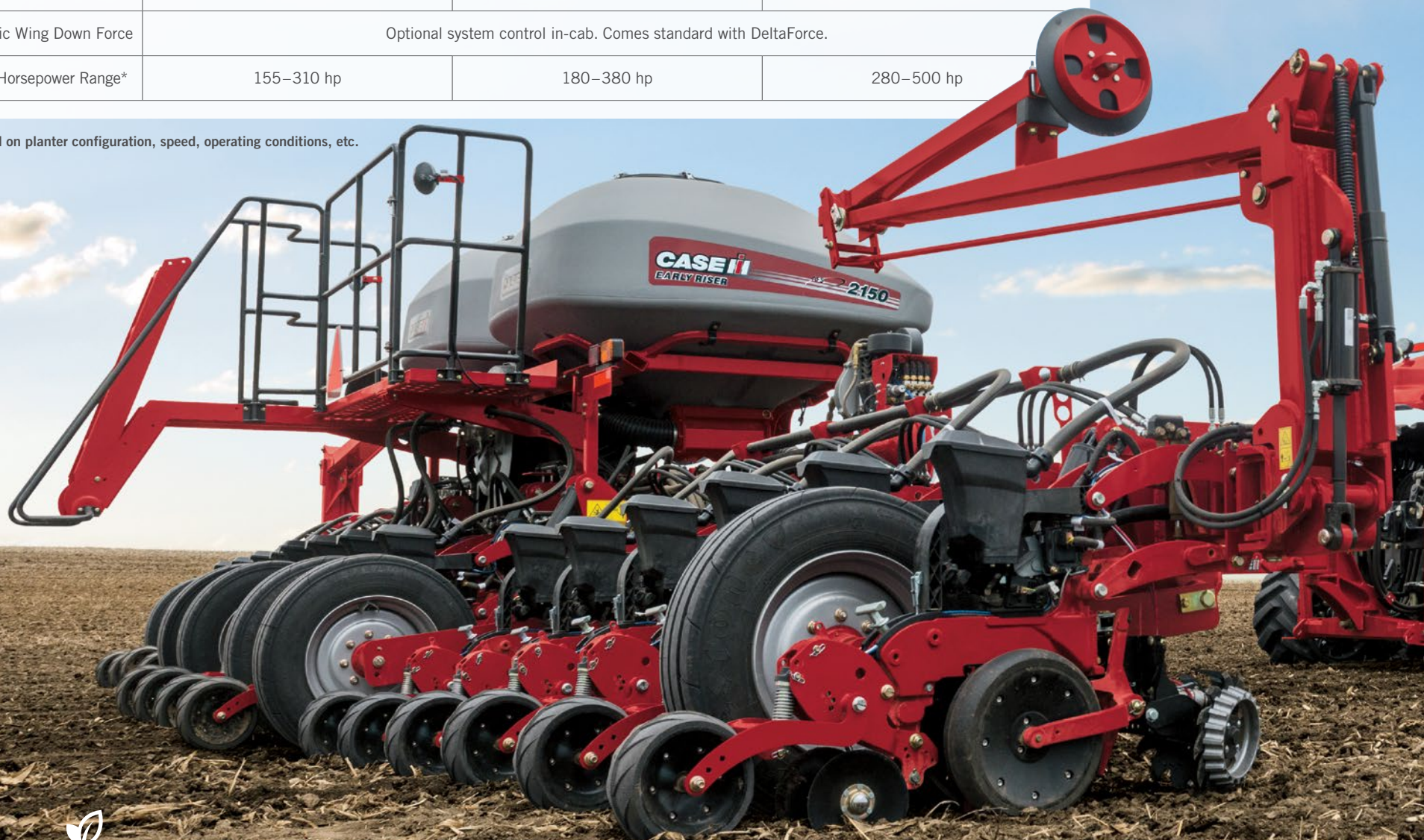
- Providing the versatility to plant corn, soybeans or other specialty crops, the Early Riser 2160 is available in a **47R15 split-row configuration** — the largest split-row configuration available from Case IH.
- **A hydraulic lift** offers fast conversion between 15- and 30-inch crops.
- **Liquid fertilizer option** to all rows and easily turned on and off to split rows.



Recognition of the year's top 50 most innovative new agricultural products in 2017 and 2020.

Model 2150	12R30	16R30	24R30
Rows	12	16	24
Spacing	30 in. (762 mm)		
Section Flex Points	3R-6R-3R	5R-6R-5R	8R-8R-8R
Hydraulic Wing Down Force	Optional system control in-cab. Comes standard with DeltaForce.		
Engine Horsepower Range*	155–310 hp	180–380 hp	280–500 hp

*Varies based on planter configuration, speed, operating conditions, etc.



2150 *EARLY RISER*

FRONT-FOLD TRAILING PLANTER

STANDARD FEATURES:

- Factory-integrated Case IH and Precision Planting vSet meters for exceptional singulation and accuracy supporting a wide variety of crop types.
- vDrive electric drive technology with row-by-row shut-offs, variable rate and curve-compensated spacing.
- Bulk-fill seed feeding system with up to two 60-bushel tanks for reliable seed delivery, no matter the seed population.
- Rugged row unit and heavy-duty components for maximum durability.

OPTIONAL FEATURES:

- 1.9-bushels on-row hopper option, with up to 600-gallon liquid fertilizer capacity.
- Optional bulk-fill scales.
- Wing downforce option for optimal ground contact in tough conditions.
- In-furrow liquid fertilizer and granular systems with in-cab controls for variable rate or prescription capable to save extra passes in the field and precisely manage nutrients and pesticides.



EARLY RISER 2150 FRONT-FOLD PLANTER.

The first model to join the family of 2000 series Early Riser planters, the 2150 Early Riser front-fold planter features a streamlined design for easy operation. Tool-free crop changes and adjustments keep you in the field, while a rugged build makes it a perfect fit to provide efficiency and accuracy in a variety of conditions.



FERTILIZER OPTIONS.

- **Liquid fertilizer system** delivers accurate application at a broad speed range.
- A **2x2 frame-mounted liquid fertilizer placement option**, exclusive to the 2150 Early Riser planter, allows for fertilizer to be placed 2 inches over from the seed with adjustable depth up to 4 inches.
- Precise application with **row-by-row overlap control**.
- **Optimize application with in-cab controls** available through your AFS Pro 700 or AFS Pro 1200 display.
- **Deliver granular insecticide in-furrow** via the AMVAC SmartBox® option, which ensures minimal exposure to insecticides while providing superior crop protection. Integrated system includes blockage sensing and row-by-row shut-offs.

HIGHLY RESPONSIVE.

- **High-clearance frame and increased row unit vertical travel** accommodates rapid terrain changes without sacrificing accurate seed placement.
- **Residue managers have more room to work** and more relief — and reduced likelihood of damage — for stubborn obstacles like rocks.
- To help row units remain in position and ready to respond to changing terrain, the **optional wing downforce control** provides additional vertical stability to the toolbar wings.
- **Heavy-duty design and components** provide excellent row unit stability to follow ground contours, including on hillsides and around curves.
- In-cab AFS Pro 700 or AFS Pro 1200 display controls allow you to **conveniently tailor settings on the go** as field conditions dictate.

SIMPLE TRANSPORT.

- Front-fold frame design for **narrow transport** from field to field.
- **Easy-to-use, on-screen, folding-and-unfolding process** with step-by-step instructions.
- **Simple to raise and lower rear platform** even when folded for tendering and servicing.



Recognition of the year's top 50 most innovative new agricultural products in 2016 and 2017.

Model 2140	23R15	24R15	31R15	32R15	24
Rows	23	24	31	32	
Spacing	15 in. (381 mm)				20 in.
Section Flex Points	6R-11R-6R	6R-11R-7R	10R-11R-10R	10R-11R-11R	8R-
Split – Row	10" set-back with hydraulic lift				
Hydraulic Wing Down Force	Standard (In-cab adjustable) — provides additional downforce to the toolbar wings				
Center Section Tires	4-High Flotation 500/45R20 Radial				
Track Carrier Spacing/Track Width	120 in./18 in. (3040 mm/457 mm)				



R20	24R22
24	
(508 mm)	22 in. (559 mm)
8R - 8R	8R - 8R - 8R
N/A	
4 - 440/55R18 Radial	
	132 in./18 in. (3353 mm/457 mm)



2140 *EARLY RISER*

PIVOT-TRANSPORT PLANTER

STANDARD FEATURES:

- Factory-integrated Case IH and Precision Planting technology for exceptional accuracy.
- Bulk-fill seed feeding system with two 40-bushel tanks for reliable seed delivery, no matter the seed population.
- Fast and easy conversion from corn to soybeans with no tools required and hydraulic lift on split rows.
- Active wing wheels for improved weight distribution, flotation and stability.

OPTIONAL FEATURES:

- In-furrow liquid fertilizer and granular system saves extra passes in the field and allows you to precisely manage nutrients.
- Liquid fertilizer options with 400-gallon capacity and in-furrow plumbing.
- Track option for improved flotation.
- 40 gpm planter mounted PTO pump.



2140 EARLY RISER PIVOT-TRANSPORT PLANTER.

The 2140 Early Riser planter is two planters in one efficient machine. Six configurations feature ultranarrow-row-spacing options, and four configurations easily convert split-rows between even and odd rows and from corn to soybeans. Designed to easily transition from an operational width of up to 44 feet to a transport width of 13.5 feet, the 2140 Early Riser planter delivers excellent ground clearance for unmatched terrain flexibility so you can easily move from field to field and navigate tight field entrances.



MORE ACCURACY.

- **Factory-integrated Case IH and Precision Planting technology** are customized to your farm's soil types, terrain, fertilizer and chemical application needs, and crop residue management practices.
- Fully integrated **in-furrow liquid fertilizer delivery system** is specifically designed for the 2140 planter.
- Low-maintenance, **electrically driven metering system** delivers accurate and consistent seed singulation, population and in-row spacing.
- Industry's only **flat-bottom seed trench** provides proper depth and more consistent seed placement while improving seed-to-soil contact.

MORE DURABILITY.

- **Rugged row unit** built for unrivaled accuracy and dependability — from 4 mph to 10 mph.
- **Heavy-duty cast components** stand up to increased speeds and tough, fast-changing conditions.
- **Increased wing flexibility** provides accurate seed placement in rolling ground and terraced fields.
- **26-inch toolbar clearance**, plus a **60% increase in vertical row unit travel** to accommodate rapid terrain changes.
- **Pivot-fold transport package** provides excellent clearance around fences, railroad tracks and bridges.

MORE PRODUCTIVITY.

- **Tool-free crop changes and adjustments** allow you to quickly and easily change over from corn to soybean planting **for two-in-one planter efficiency**.
- **Fast-folding, narrow transport** and **excellent clearance** let you efficiently move from field to field.
- **Tender seed from a convenient platform** that is similar in height to a pickup truck tailgate, and standard rear work lights help to see better at night.
- **Automatic and in-cab adjustments** help quickly adapt to unique field conditions for optimal performance. **AFS Pro 700 displays** can show up to six run screens and **AFS Pro 1200 displays** can show up to seven run screens.



Recognition of the year's top 50 most innovative new agricultural products in 2018.

Model 2130	12R30	12R36	12R38	12R40	16R30	18R30
Rows	12				16	18
Spacing	30 in. (762 mm)	36 in. (914 mm)	38 in. (965 mm)	40 in. (1016 mm)	30 in. (762 mm)	
Section Flex Points	3R-6R-3R				4R-8R-4R	5R-8R-5R
Hydraulic Wing Down Force	Available — provides additional down force to the toolbar wings					
Engine Horsepower Range*	180–310 hp					

*Varies based on planter configuration, speed, operating conditions, etc.



2130 *EARLY RISER*

MOUNTED STACK-FOLD PLANTER

STANDARD FEATURES:

- Factory-integrated Case IH and Precision Planting vSet meters for exceptional singulation and accuracy supporting a wide variety of crop types.
- vDrive electric drive technology with row-by-row shut-offs, variable rate and curve-compensated spacing.
- Rugged row unit and heavy-duty components for maximum durability.
- 1.9-bushels on-row hoppers compatible with a wide variety of crop types, including cotton, edible beans and peanuts.

OPTIONAL FEATURES:

- Liquid fertilizer options include variable rate control with Rx capabilities and in-furrow delivery.
- In-furrow liquid fertilizer and granular system saves extra passes in the field and allows you to precisely manage nutrients.
- Bulk-fill seed feeding system with a single 50-bushel tank for more planting between fills, and convenient central fill for fast and easy tendering.
- Optional gullwing and wing downforce.
- Optional lift assist wheels.



EARLY RISER 2130 MOUNTED STACK-FOLD PLANTER.

A perfect fit for any high-tech strip-till, irrigation and specialty crops operation, the Early Riser 2130 stack-fold planter with mounted 3-point hitch delivers efficiency and accurate seed placement at your speed — up to 10 mph.



STACK-AND-GO PORTABILITY.

- **Fast, convenient stacking** allows for easy transport from field to field and brings the planter closer to the tractor so you can back right up to the field edge and start planting.
- The **heavy-duty toolbar** is designed to hold up to high speeds and tough, fast-changing conditions.
- **Weight is evenly distributed** across the planter and tractor footprint, achieving constant pressure on the gauge wheels for accurate seed depth across varying soil conditions and speeds.
- Optional **lift assist wheels** further distribute weight.
- **Gullwing option** provides additional wing lift when planter is raised for more clearance on headland turns.

FIND THE PERFECT FIT.

- **Irrigation:** Pair with a Magnum™ series tractor that has guidance in reverse for better maneuverability. This helps you plant close to the water source without risking equipment damage.
- **Strip-till:** Efficiently hit tight spring planting windows with a planter that precisely follows strips acre after acre.
- **Wide rows:** The 2130 Early Riser planter allows for 36-, 38- and 40-inch rows so you can plant all of your crops, from corn to cotton.
- **Multiple Crop Types:** The vSet 2 vDrive electric drive meter carefully handles a variety of crops, including cotton, corn, edible beans, soybeans, peanuts and sugar beets, allowing you to place quality seed in the ground acre after acre.

NEXT-LEVEL EFFICIENCY.

- **Bulk-fill seed feeding system** with 50-bushel capacity provides reliable seed delivery — no matter the seed population.
- Bulk-fill system is **easy to fill and quick to clean out** when changing crop types.
- **Liquid fertilizer system** delivers accurate application and is available with row-by-row shut-offs.
- **High-speed capability** — up to 10 mph — helps you get the crop planted during optimal planting windows. For example, you can cover 67% more acres by planting at 10 mph compared with 6 mph.
- Quickly adapt to changing conditions with **in-cab adjustment options** for row cleaner ride, row unit downforce and closing system down pressure.



SET YOUR PLANTING SEASON UP FOR SUCCESS

HIGH-EFFICIENCY PLANTING STARTS AT THE SEEDBED.

The latest planter technology allows for productive, high-efficiency planting. But your seedbed sets the tone for row unit ride and planter speed. A smoother, more level seedbed floor helps your planter consistently and reliably place seeds at the right depth and spacing. That's why Early Riser 2000 series planters and Case IH soil management tools are a perfect match to help your crops achieve their full yield potential.

LEARN MORE ABOUT CASE IH
SOIL MANAGEMENT SOLUTIONS AT:
WWW.CASEIH.COM





FIT THE WAY YOU FARM WITH CASE IH FERTILIZER OPTIONS.

No matter your farming practices, Case IH has fertilizer options and attachments to help you promote faster, earlier seed growth. Your Case IH dealer can help you spec out your planter to get the job done the way you want.



2160 LARGE FRONT-FOLD PLANTER.

- Tank options:
 - 600-gallon tank on planter with built-in agitation
 - Tractor-mounted tank*
 - Fully integrated AMVAC SmartBox system available for granular applications
- Application options:
 - In-furrow delivery with rubber applicator drops liquid fertilizer directly into the furrow in front of the closing system

2150 FRONT-FOLD PLANTER.

- Tank options:
 - 400-gallon bulk-fill with capacity up to 600-gallons when equipped with on-row hoppers
 - Pull-hitch option for towed fertilizer cart
 - Tractor-mounted tank*
 - Fully integrated AMVAC SmartBox system available for granular applications
- Application options:
 - Frame-mounted 2×2 liquid fertilizer placement with 15-inch diameter offset disk. The fertilizer shoe applies fertilizer 2 inches from seed with 0 to 4 inches adjustable depth
 - Unit-mounted 2×2 liquid fertilizer with 14-inch offset opener that places liquid fertilizer directly in the soil and includes spike-toothed, floating row cleaners
 - In-furrow delivery with rubber applicator

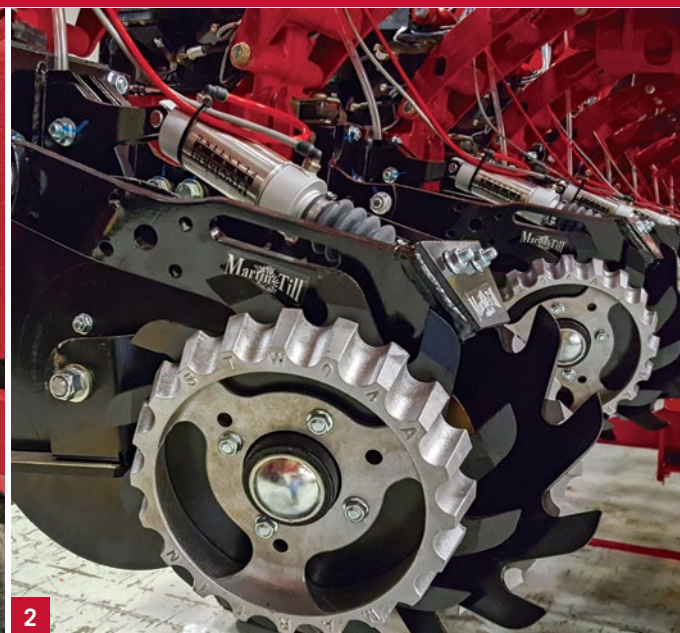
2140 PIVOT-TRANSPORT PLANTER.

- Tank options:
 - Two 200-gallon tanks with built-in agitation
 - Tractor-mounted tank*
 - Fully integrated AMVAC SmartBox system available for granular applications
- Application options:
 - In-furrow delivery with rubber applicator drops liquid fertilizer directly into the furrow in front of the closing system

2130 STACK-FOLD PLANTER.

- Tank options:
 - Tractor-mounted tank*
 - Fully integrated AMVAC SmartBox system available for granular applications
- Application options:
 - In-furrow delivery with rubber applicator drops liquid fertilizer directly into the furrow in front of the closing system

*Tank not included for tractor-mounted tank options.



CONTROL SYSTEM.

- **Monitor liquid fertilizer system performance and make in-cab flow rate adjustments** with the AFS Pro 700 or AFS Pro 1200 display.
- **Three-section control system** is capable of prescriptions and variable rates and offers row-by-row overlap control for ultimate efficiency to reduce input costs.
- **Centrifugal liquid fertilizer pump** accurately delivers a broad application rate across a range of speeds (4 to 10 mph).

ROW UNIT ATTACHMENTS.

- 1 In-furrow placement option
- 2 Unit-mounted 2×2 option with floating row cleaner
- 3 Frame-mounted 2×2 option

PRODUCT SUPPORT KITS FOR LONG-LASTING DURABILITY.

When it comes to the productivity of your Case IH planter, only trust the best. Many product support kits are available to help you repair or replace worn parts.

DISK ASSEMBLIES FOR CASE IH 2000 SERIES PLANTERS.

PART NO.	DESCRIPTION	APPLICATION
47743000	Disk, 9" assembly	2000 Series
51691765	Disk, 15" assembly	2000 Series



NEW EARTH METAL OPENER ASSEMBLY

Earth Metal Blade

Earth Metal blades last significantly longer and are measurably stronger than conventional blades.

Wobble Reduction

New process reduces wobble for improved performance.

Machined Edge

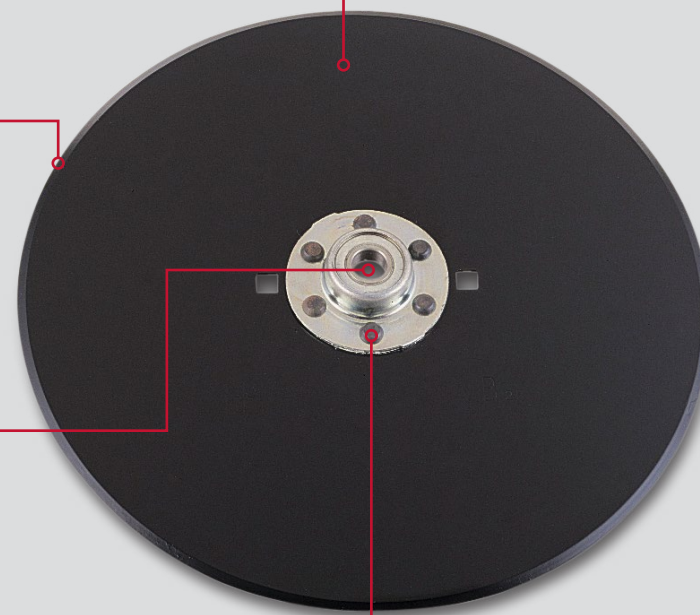
Improved penetration in conventional and no-till applications.

Extended Life and Reduced Wear

Gothic arch design with two-point contact between the balls and the races to give a higher load rating and to reduce wobble. This design helps to extend bearing life and reduce opener disk wear.

New Heavy-duty Cast Ductile Iron Hub and Class 3 Rivets

These new hubs and rivets provide improved strength and durability.





DISK OPENER SCRAPER KITS.

- Spring tensioned opener disk scrapers maintain opener disk contact as scraper wears and can be serviced without tools.
- Opener disk scraper kits include leading and trailing disk scrapers and springs for LH or RH sides of row unit.

PART NO.	DESCRIPTION	APPLICATION
48030825	LH disk opener scraper kit	2000 Series
48030826	RH disk opener scraper kit	2000 Series

FURROW-FORMING POINT AND SEED SHOE KIT.

- Includes furrow-forming point, seed shoe and hardware.

PART NO.	DESCRIPTION	APPLICATION
48030831	Furrow-forming point and shoe	2000 Series

CARRIER WHEEL MUD SCRAPER.

- Adjusting carrying wheel mud scraper brackets and hardware for center section tires only.

PART NO.	DESCRIPTION	APPLICATION
47832716	Carrier wheel mud scraper	2150

CLOSING DISK KITS.

- Includes two closing disks and hardware.

PART NO.	DESCRIPTION	APPLICATION
48031218	Closing disk kit	2000 Series

SEED FLOW LUBRICANT.

- 50/50 talc/graphite mix available.
- Improves seed flow when planting sticky coated seed.
- Available in 1- or 8-lb. containers.

PART NO.	DESCRIPTION	APPLICATION
73340370	1-lb. 50/50 talc/graphite blend, fine particle size	2000 Series
73340734	8-lb. 50/50 talc/graphite blend, fine particle size	2000 Series
73340918	Dispensing cap	8-lb. Container

EARLY RISER 2160 LARGE FRONT-FOLD PLANTER SPECIFICATIONS

CONFIGURATION						
Rows	24	36	36	32	36	47
Spacing	30 in. (762 mm)	20 in. (508 mm)	22 in. (559 mm)	30 in. (762 mm)		15 in. (381 mm)
Section Flex Points	9R-6R-9R	13R-10R-13R		6R-7R-6R-7R-6R	6R-9R-6R-9R-6R	17R-13R-17R
Wing Flex	+/-15° (30° total)			+/-15° (30° total) inner wing, +/-20° (40° total) outer wing		+15°/-6° (21° Total)
Frame Size	12 × 12 in. (30.5 × 30.5 cm)					
Toolbar Operating Height	26 in. (660 mm)					
Approximate Transport L × W × H (Includes Bulk Fill With Scales, Tracks, Markers, 2-stage Closing, No Granular Chemical)	46 ft. 6 in. × 15 ft. 4 in. × 12 ft. 3 in. (14.2 × 4.7 × 3.7 m)	46 ft. 6 in. × 16 ft. 4 in. × 12 ft. 3 in.(14.2 × 5.0 × 3.7 m)	47 ft. 10 in. × 17 ft. 10 in. × 12 ft. 3 in.(14.4 × 5.4 × 3.7 m)	54 ft. 10 in. × 15 ft. 4 in. × 12 ft. 3 in.(16.7 × 4.7 × 3.7 m)	56 ft. 5 in. × 15 ft. 4 in. × 12 ft. 3 in.(17.2 × 4.7 × 3.7 m)	46 ft. 6 in. × 17 ft. 1 in. × 12 ft. 3 in. (14.2 × 5.2 × 3.7 m)
HITCH						
Hydraulic Drawbar	Standard – Category IV					
FLOTATION						
Tire Arrangement	2-4-2			2-2-4-2-2		2-4-2
Steerable Center Section Tires With High Flotation Wing Wheels	Standard – center section 500/45R20 radial tires & wing 380/55R16.5 radial tires (steering in transport only)					
Fixed Center Section Tires With High Flotation Wing Wheels	Available – center section 500/45R20 radial tires & wing 380/55R16.5 radial tires					
Steerable Center Section Tracks With High Flotation Wing Wheels	Available – 2 center section tracks & wing 380/55R16.5 radial tires (steering in transport only)					
Track Carrier Spacing / Track Width	120 in. / 24 in. (305 cm / 61 cm)	120 in. / 18 or 24 in. (305 cm / 46 or 61 cm)	88 or 132 in. / 18 or 24 in. (224 or 335 cm / 46 or 61 cm)	120 in. / 24 in. (305 cm / 61 cm)		
SEED DELIVERY						
Bulk Fill	Standard – 120 bu. total with work lights; Available – with scales					
Electric Drive Vacuum Seed Meter	Standard – vSet® 2 vacuum seed meter with vDrive® electric drive motor					
Seed Tube / Hy Rate Plus™ Seed Sensor	Standard – 10 LED seed sensor for improved accuracy across multiple seed types & rates					
Advanced Seed Delivery (ASD)	Available – SpeedTube® belt delivery system for high accuracy at any speed up to 10 mph*					
ROW UNIT						
Parallel Links	Standard – cast lower parallel links with 16 in. (406 mm) total vertical row unit travel					
Offset Opener Disks / Opener Disk Scrapers	Standard – 15 in. (381 mm) diameter, 0.18 in. (4.5 mm) width, opener disks with external scrapers. Available — Combination internal/external scrapers^					
Row Unit Frame With Zero Index Depth Adjustment	Standard – cast row unit frame with 1/4 in. (6.4 mm) or 1/8 in. (3.2 mm) depth increments; zero indexed from factory					
ROW UNIT DOWNFORCE						
Air Downforce	Standard – air downforce with gauge wheel load feedback					
Hydraulic Downforce With Automatic Control	Available – DeltaForce® adds or removes weight automatically, row by row					
CLOSING SYSTEM						
2-Stage With Spring Closing Disk & Press Wheel	Standard – independent 9 in. (228 mm) diameter 0.10 in (2.5 mm) width, inverted closing disks & press wheel					
V-Press Wheel With Spring	Available – 12 in. (305 mm) diameter × 1 in. (25 mm) width rubber V-Press wheels					
Air Closing	Available – air adjust closing disk or V-Press wheels with AFS Pro 700 or AFS Pro 1200 display					
MARKERS						
Markers	Standard – no marker; Available – triple-fold, automatic alternating markers with shear bolts					
HYDRAULIC / ELECTRICAL / AIR SYSTEM						
Hydraulic Direct Drive With Alternator	Standard – planter mounted, hydraulically driven, with Auxiliary Alternator Automation, 200 amp (240 amp on 47 row) alternator with battery~					
Auxiliary PTO Hydraulic Pump	Available – planter mounted 40 GPM (151 LPM) PTO pump^					
Compressed Air	Standard – planter-mounted hydraulic drive compressor with wet lube, 5 gal. (18.92 L) air tank and 2 micron air filter, controlled through AFS Pro 700 or AFS Pro 1200					
DISPLAY SYSTEM						
AFS Pro 700 or AFS Pro 1200 Display	Available – AFS Pro 700 or AFS Pro 1200 display — required for operation					
FERTILIZER AND CHEMICAL DELIVERY						
Granular Chemical Option	Available – Smart Box® electric insecticide, row-by-row overlap control, controlled through AFS Pro 700 or AFS Pro 1200. Closed transfer system. In-furrow delivery					
Liquid Fertilizer	Available – 600 gal. (2271 L) tank, 3 section control through AFS Pro 700 or AFS Pro 1200. Minimum 3 gal. per acre application. In furrow delivery. Available – row-by-row overlap control^					
ROW UNIT TILLAGE						
Fixed Residue Managers	Available – tine or no-till dual wheel					
Narrow Floating Residue Managers	Available – tine or no-till with depth band dual wheel. Available – AFS Pro 700 or AFS Pro 1200 flotation up / down pressure adjust with CleanSweep® air cylinders					
TRACTOR RECOMMENDATIONS						
Engine Horsepower Range*	380-540 hp	380 – 620 hp		340 – 540 hp	380 – 620 hp	
Hydraulic System*	High flow or twin-flow hydraulic pump					
Number of Hydraulic Remotes	3 with PTO pump, 5 direct drive					

Standard = In base price of the planter

Available = Multiple options available

* = Varies based on planter configuration, speed, operating conditions, etc.

~ = Battery must be sourced by dealer

^ = Factory-supplied, dealer-installed attachment only

EARLY RISER 2150 FRONT-FOLD PLANTER SPECIFICATIONS

CONFIGURATION			
Rows	12	16	24
Spacing	30 in. (762 mm)		
Section Flex Points	3R-6R-3R	5R-6R-5R	8R-8R-8R
Wing Flex	+/- 21 degrees		
Frame Size	7 × 7 in. (17.8 × 17.8 cm)		8 × 8 in. (20.3 × 20.3 cm)
Toolbar Operating Height	26 in. (660 mm)		
Transport L × W × H (Includes 2-point Hitch, Bulk Fill With Scales, 2-stage Closing, No Gran Chem)	33' 7" × 12' 4" × 11' 5" (10.2 m × 3.8 m × 3.5 m)		46' × 12' 6" × 11' 8" (14 m × 3.8 m × 3.6 m)
HITCH			
2-Point Hitch	Standard		
Hydraulic Drawbar	N/A	Available	
Rear Tow Hitch With Harnessing	Available – for use with towed fertilizer caddy		
FLOTATION			
Radial Tires	VF 245/70R19.5		VF 295/75R22.5
Tire Arrangement	1-4-1		2-4-2
SEED DELIVERY			
On Row Hopper	Available – 1.9 bu. per row		
Bulk Fill (Standard/Optional)	Without scales – 100 bu. total / With scales – 100 bu. total		Without scales – 120 bu. total / With scales – 120 bu. total
Electric Drive Vacuum Seed Meter	Standard – vSet® 2 vacuum seed meter with vDrive® electric drive motor		
Seed Tube / Hy Rate Plus™ Seed Sensor	Standard – 10 LED seed sensor for improved accuracy across multiple seed types & rates		
Advanced Seed Delivery™ (ASD™)	Available – SpeedTube® belt delivery system for high accuracy at any speed up to 10 mph*		
ROW UNIT			
Parallel Links	Standard – cast lower parallel links with 16 in. (406 mm) total vertical row unit travel		
Offset Opener Disks / Opener Disk Scrapers	Standard – 15 in. (381 mm) diameter, 0.18 in. (4.5 mm) width, opener disks with external scrapers. Available — Combination internal/external scrapers^		
Row Unit Frame With Zero Index Depth Adjustment	Standard – cast row unit frame with 1/4 in. (6.4 mm) or 1/8 in. (3.2 mm) depth increments		
ROW UNIT DOWNFORCE			
Air Downforce	Standard – air downforce with gauge wheel load feedback		
Hydraulic Downforce With Automatic Control	Available – DeltaForce® adds or removes weight automatically, row by row		
CLOSING SYSTEM			
2-Stage With Spring Closing Disk & Press Wheel	Standard – independent 9 in. (228 mm) diameter 0.10 in (2.5 mm) width, inverted closing disks & press wheel		
Air Closing	Available – air adjust closing disk or V-Press wheels with AFS Pro 700 or AFS Pro 1200 display		
V-Press Wheel With Spring	Available – 12 in. (305 mm) diameter × 1 in. (25 mm) width rubber V-Press wheels		
MARKERS			
Markers	Standard – no marker with wing weight brackets for mounting up to 4 suitcase weights; Available – triple-fold, automatic alternating markers with shear bolts. Available — No marker no weight brackets		
HYDRAULIC / ELECTRICAL / AIR SYSTEM			
Hydraulic Direct Drive With Alternator	Standard – planter mounted, hydraulically driven 200 amp alternator with battery~		
Auxiliary PTO Hydraulic Pump	Available – 22 GPM (83 LPM)^		
Compressed Air	Standard – planter-mounted hydraulic drive compressor with wet lube, 5 gal. (18.92 L) air tank and 2 micron air filter, controlled through AFS Pro 700 or AFS Pro 1200		
DISPLAY SYSTEM			
AFS Pro 700 or AFS Pro 1200 Display	Available – AFS Pro 700 or AFS Pro 1200 display — required for operation		
FERTILIZER AND CHEMICAL DELIVERY			
Liquid Fertilizer (On Row Seed Hopper Tank, Bulk-fill Seed Hopper Tank, Without Tanks)	Available – 600 gal. (2271 L) tank with on-row seed hopper, 400 gal. (1514 L) tank with bulk-fill seed hopper, or no tank with centrifugal pump & 3 section control through AFS Pro 700 or Pro 1200		
Electronic Individual Row Liquid Fertilizer Shutoff	Available – automatic overlap control in sync with seed meter^		
Liquid Fertilizer Delivery	Available – frame mounted 2 × 2 15 in. (381 mm) diameter liquid fertilizer coulters^; Available — row unit mounted 2 × 2 15 in. (381 mm) diameter liquid fertilizer coulters^		
Electric Drive Granular Chemical	Available – Smart Box® electric insecticide, row-by-row overlap control, controlled through AFS Pro 700 or AFS Pro 1200. Closed transfer system. In-furrow delivery		
ROW UNIT TILLAGE			
Nonfloating Residue Manager	Available – 13 in. (330 mm) diameter pin adjust tine or no-till wheel without depth band		
Floating Residue Manager	Available – tine or no-till with depth band dual wheel. Available — AFS Pro 700 or AFS Pro 1200 flotation up/down pressure adjust with CleanSweep® air cylinders		
25 Wave Coulter	Available – 16 in. (406 mm) diameter coulters^		
Tillage Adapters	Available – stern mount or plate mount tillage adapters		
TRACTOR RECOMMENDATIONS			
Engine Horsepower Range*	155–310 hp	180–380 hp	280–500 hp
Hydraulic System*	High flow or twin-flow hydraulic pump		
Number of Hydraulic Remotes	3 with direct drive, 3 with PTO pump	2-point hitch: 3 with direct drive, 3 with PTO pump; Drawbar hitch: 4 with direct drive, 4 with PTO pump	
Maximum Case Drain Port Back Pressure	26 psi (170 kPa)		

Standard = In base price of the planter

Available = Multiple options available

* = Varies based on planter configuration, speed, operating conditions, etc.

~ = Battery must be sourced by dealer

^ = Factory-supplied, dealer-installed attachment only

EARLY RISER 2140 PIVOT TRANSPORT PLANTER SPECIFICATIONS

CONFIGURATION						
Rows	23	24	31	32	24	24
Spacing	15 in. (381 mm)				20 in. (508 mm)	22 in. (559 mm)
Section Flex Points	6R-11R-6R	6R-11R-7R	10R-11R-10R	10R-11R-11R	8R-8R-8R	8R-8R-8R
Wing Flex*	+10/-7° (17° Total)					
Frame Size	8" × 8" (20.3 × 20.3 cm)					
Toolbar Operating Height	26 in. (660 mm)					
Approximate Transport L × W × H (Includes, Wheeled Carrier, Markers, 2-Stage Closing)	44' 3" × 13' 6" × 10' 4" (13.5 × 4.1 × 3.1 m)		47' 11" × 13' 6" × 10' 4" (14.6 × 4.1 × 3.1 m)	49' 4" × 13' 6" × 10' 4" (15.1 × 4.1 × 3.1 m)	48' 6" × 13' 6" × 10' 4" (14.8 × 4.1 × 3.1 m)	52' 3" × 13' 6" × 10' 4" (15.9 × 4.1 × 3.1 m)
HITCH						
Hydraulic Telescoping Drawbar	Standard – Category IV hitch					
FLOTATION						
Tire Arrangement	1-4-1					
Center Section Tires With High Flotation Wing Wheels	Standard - center 500/45R20 radial & wing 380/55R16.5 radial				Standard - center 440/55R18 radial & wing 380/55R16.5 radial	
Center Section Tracks With High Flotation Wing Wheels	Available - 2 center section tracks & wing 380/55R16.5 radial Tires					
Track Carrier Spacing / Track Width	120 in. / 18 in. (305 cm / 46 cm)					132 in. / 18 in. (336 cm / 46 cm)
SEED DELIVERY						
Bulk Fill	Standard – 80 bu. total with work lights					
Electric Drive Vacuum Seed Meter	Standard – vSet® 2 Vacuum Seed Meter with vDrive® Electric Drive Motor, row-by-row overlap control capable and curve compensated spacing					
Seed Tube / Hy Rate Plus™ Seed Sensor	Standard – 10 LED seed sensor for improved accuracy across multiple seed types & rates					
Advanced Seed Delivery™ (ASD)	Available – SpeedTube® belt delivery system for high accuracy at any speed up to 10 mph†					
ROW UNIT						
Parallel Links	Standard – cast lower parallel links with 16 in. (406 mm) total vertical row unit travel					
Offset Opener Disks / Opener Disk Scrapers	Standard – 15 in. (381 mm) diameter, 0.18 in. (4.5 mm) width, opener disks with external scrapers. Available — Combination internal/external scrapers^					
Row Unit Frame With Zero Index Depth Adjustment	Standard – cast row unit frame with 1/4 in. (6.4 mm) or 1/8 in. (3.2 mm) depth increments					
ROW UNIT DOWNFORCE						
Air Downforce	Standard – air downforce with gauge wheel load feedback					
Hydraulic Downforce With Automatic Control	Available – DeltaForce® adds or removes weight automatically, row by row					
CLOSING SYSTEM						
2-Stage With Spring Closing Disk & Press Wheel	Standard – independent 9 in. (228 mm) diameter inverted closing disks & rubber press wheel					
V-Press Wheel With Spring	Available – 12 in. (305 mm) diameter × 1 in. (25 mm) width rubber V-Press wheels					
Air Closing	Available – air adjust with AFS Pro 700 or AFS Pro 1200					
MARKERS						
Markers	Standard – no marker; Available – triple-fold, automatic alternating markers with shear bolts					
HYDRAULIC / ELECTRICAL / AIR SYSTEM						
Hydraulic Direct Drive With Alternator	Standard – planter mounted, hydraulically driven, powersaving automated control, 200 amp alternator with battery~					
Auxiliary PTO Hydraulic Pump	Available – planter mounted 40 gpm (151 lpm) PTO pump^					
Compressed Air	Standard – planter-mounted hydraulic drive compressor with wet lube, 5 gal. (18.92 L) air tank and 2 micron air filter, controlled through AFS Pro 700 or AFS Pro 1200					
DISPLAY SYSTEM						
AFS Pro 700 or AFS Pro 1200 Display	Available – AFS Pro 700 or AFS Pro 1200 display – Required for operation					
FERTILIZER AND CHEMICAL DELIVERY						
Granular Chemical Option	Available – Smart Box® electric insecticide, row-by-row overlap control, controlled through AFS Pro 700 or AFS Pro 1200. Closed transfer system. In-furrow delivery					
Liquid Fertilizer With Bulk-fill Option	Available – 400 gal. (1 514 L) total capacity (2 tanks), 3 section control through AFS Pro 700 or AFS Pro 1200. Minimum 3 gal. per acre application. In furrow delivery. Available – row-by-row overlap control					
ROW UNIT TILLAGE						
Fixed Residue Managers	Available – tine or no-till dual wheel					
Narrow Floating Residue Managers	Available – tine or no-till with depth band dual wheel. Available – AFS Pro 700 or AFS Pro 1200 flotation up / down pressure adjust with CleanSweep® air cylinders					
TRACTOR RECOMMENDATIONS						
Engine Horsepower Range†	230–340 hp		280–380 hp		250–340 hp	
Drawbar	Category 3 or 4 drawbar with hammer-strap, 6,700 lbs. (3 039 Kg) minimum static load capacity					
Hydraulic System†	High flow or twin-flow hydraulic pump					
Number of Hydraulic Remotes	4 with direct drive, 2 with PTO pump					

Standard = In base price of the planter Available = Multiple options available * = With row units in center range of travel ~ = Battery must be sourced by dealer ^ = Factory-supplied, dealer-installed attachment only † = Varies based on Planter configuration, speed, operating conditions, etc.

EARLY RISER 2130 STACK-FOLD PLANTER SPECIFICATIONS

CONFIGURATION						
Rows	12				16	18 (16R30 with DIA kit installed)
Spacing	30 in. (762 mm)	36 in. (914 mm)	38 in. (965 mm)	40 in. (1016 mm)	30 in. (762 mm)	
Section Flex Points	3R-6R-3R				4R-8R-4R	5R-8R-5R
Wing Flex	+8/-8° (16° total)					
Wing Turn Assist (Gullwing)	Available – provides additional wing lift when planter is raised for headland turns					
Frame Size	7" × 7" (18 cm × 18 cm)					
Toolbar Operating Height	26 in. (660 mm)					
Approximate Transport W × H*	20' 6" × 11' 1" (6.2 × 3.4 m)	22' 5" × 13' 2" (6.8 × 4.0 m)		26' 8" × 13' 10" (8.13 × 4.2 m)		27'3" × 13'11" (8.3 × 4.2 m)
Weight Empty*	9,500 lb. (4 227 kg)	11,400 lb. (5 182 kg)		11,500 lb. (5 227 kg)	13,500 lb. (6 136 kg)	14,500 lb. (6 590 kg)
LIFT SYSTEM						
Full Mounted	Standard – 3-point hitch Category III or IVN; Category IVN recommended with bulk-fill					
Semi-Mounted	Available – 2-point hitch Category III or IVN with available lift assist wheels					
FLOTATION						
Tire Arrangement	1-2-1, 7.6 × 15 Goodyear® sure grip traction 10-ply; configurable to front of toolbar or between rows (wings only on 12R)					
Wheel Lift Assist	Available – castering VF 245/70R19 Firestone® AD2 radial; carries 40% to 45% of planter weight depending on configuration					
SEED DELIVERY						
Seed Capacity	Standard – 1.9 bu. on-row hoppers; available - bulk-fill single 50 bu. hopper with work lights					
Electric Drive Vacuum Seed Meter	Standard – vSet 2 vacuum seed meter with vDrive electric drive motor, row-by-row overlap control capable and curve-compensated spacing					
Seed Tube / Hy Rate Plus™ Seed Sensor	Standard – 10 LED seed sensor for improved accuracy across multiple seed types and rates					
Advanced Seed Delivery™ (ASD)	Available – SpeedTube® belt delivery system for high accuracy at any speed up to 10 mph**					
ROW UNIT						
Headbracket Connection to Toolbar	Welded	Bolt-on			Welded	
Parallel Links	Standard – Cast lower parallel links with 16" (406 mm) total vertical row unit travel					
Offset Opener Disks / Opener Disk Scrapers	Standard – 15" (381 mm) diameter, 0.18" (4.5 mm) width, opener disks with external scrapers. Available – combination internal/external scrapers^					
Frame With Zero Index Depth Adjustment	Standard – cast row unit frame with 1/4" (6.4 mm) or 1/8" (3.2 mm) depth increments					
ROW UNIT DOWNFORCE						
Air Downforce	Standard – air downforce with gauge wheel load feedback					
Hydraulic Downforce With Automatic Control	Available – DeltaForce® adds or removes weight automatically, row by row					
Wing Downforce	Available – provides additional downforce to the toolbar wings					
CLOSING SYSTEM						
2-Stage With Spring Closing Disk and Spring Press Wheel	Standard – Independent 9" (228 mm) diameter inverted closing disks & rubber press wheel					
V-Press Wheel With Spring	Available – 12" (305 mm) diameter × 1" (25 mm) width rubber V-press wheels					
Air Closing	Available – air adjust with AFS Pro 700 or AFS Pro 1200 display					
MARKERS						
Markers	Standard – no marker; available - automatic alternating markers with shear bolts (not available with bulk-fill)					N/A
HYDRAULIC / ELECTRICAL / AIR SYSTEM						
Hydraulic Direct Drive With Alternator	Standard – planter-mounted, hydraulically driven, power saving automated control, 200 amp alternator with battery~					
Compressed Air	Standard – planter-mounted hydraulic drive compressor with wet lube, 5-gal. (18.92-L) air tank and 2 micron air filter - controlled through AFS Pro 700 or AFS Pro 1200					
DISPLAY SYSTEM						
AFS Pro 700 or AFS Pro 1200 Display	Available – AFS Pro 700 or AFS Pro 1200 display - required for operation					
FERTILIZER AND CHEMICAL DELIVERY						
Granular Chemical Option	Available – SmartBox electric insecticide, row-by-row overlap control, controlled through AFS Pro 700 or AFS Pro 1200. Closed transfer system. In-furrow delivery (not available with bulk-fill)					
Liquid Fertilizer Option for Tractor-Mounted Tanks	Available – 3-section control through AFS Pro 700 or AFS Pro 1200. Minimum 3 gal. (11.36 L) per acre application; available - In-furrow delivery, row by row overlap control^					
RESIDUE MANAGEMENT						
Fixed Residue Managers	Available – tine or no-till dual wheel					
Floating Residue Managers	Available – tine or no-till with depth band dual wheel. Available - AFS Pro 700 or AFS Pro 1200 flotation up/down pressure adjust with CleanSweep® air cylinders					
TRACTOR RECOMMENDATIONS						
Engine Horsepower Range**	180 – 310 hp				180 – 380 hp	
Hydraulic System**	3 or 4 remotes based on options; high-flow or twin-flow hydraulic pump					

Standard = In base price of the planter Available = Multiple options available * = Equipped with: 2-stage closing, on-row hoppers, floating row cleaner, air compressor, battery; lift assist add 1,500 lb. (680 kg); Bulk-fill add 1,030 lb. (476 kg) empty, markers add 600 lb. (270 kg) and 11" of transport height
 ** = Varies based on planter configuration, speed, operating conditions, etc. ~ = Battery must be sourced by dealer ^ = Factory-supplied, dealer-installed attachment only



SAFETY NEVER HURTS!™ Always read the Operator's Manual before operating any equipment. Inspect equipment before using it, and be sure it is operating properly. Follow the product safety signs, and use any safety features provided. CNH Industrial America LLC reserves the right to make improvements in design and changes in specifications at any time without notice and without incurring any obligation to install them on units previously sold. Specifications, descriptions and illustrative material herein are as accurate as known at time of publication, but are subject to change without notice. Availability of some models and equipment builds varies according to the country in which the equipment is used.

©2021 CNH Industrial America LLC. All rights reserved. Case IH is a trademark registered in the United States and many other countries, owned by or licensed to CNH Industrial N.V., its subsidiaries or affiliates. Any trademarks referred to herein, in association with goods and/or services of companies other than CNH Industrial America LLC, are the property of those respective companies. Printed in U.S.A. www.caseih.com

CIH21051202