

**SCRAPER POWER.**  
**STEIGER® & MAGNUM™ SERIES TRACTORS**

**CASE II**  
AGRICULTURE





## DESIGNED TO KEEP YOU MOVING, REGARDLESS OF THE CONDITIONS.

Jobs don't get smaller, deadlines don't get longer and conditions rarely become easier. In fact, you're probably being asked to do more with less. But, you can depend on Case IH tractors to pull their weight... and then some. Our cabs and controls are designed to help you make the most of long days. Our exclusive SCR-only Tier 4 B/Final emissions system offers a unique combination of optimum power and fuel efficiency. That means a lower cost per yard on your job site, as well as reliable performance in every condition. The new generation of Case IH tractors helps you improve your bottom line and ensures you'll be ready for the challenges ahead.

**BE READY.**







**LEADING THE INDUSTRY**

**4-7**

**STEIGER® TRACTORS**

**8-10**

**QUADTRAC® UNDERCARRIAGE**

**10**

**MAGNUM™ TRACTORS**

**11**

**SYSTEMS APPROACH**

**12**

**PRODUCT SPECIFICATIONS**

**13-14**



# STEIGER POWER TACKLES SERIOUS EARTH MOVING.

A Steiger tractor-scraper combination efficiently handles large-scale dirt work with outstanding fuel economy. The scraper tractor configuration's rugged chassis has the durability needed for heavy loads, and responsive hydraulics for the cycle times you demand. Nine Steiger scraper models allow you to match tractor power to your scraper system. And the industry's first 4-point suspended cab gives you a smoother ride all day long.

TRACTOR MODEL	HP	FPT ENGINE	TRANSMISSION	AXLE	HYDRAULICS	
Magnum 180 Wheeled	180	6.7 L	Powershift/CVT	Bar axle with internal wet disk brakes and hydraulically activated differential lock. Suspended front axle recommended.	Three remotes standard; up to five optional remotes. 41 gpm standard flow on Powershift models; 43 gpm standard flow on CVT models. Standard laser/GPS interface.	
Magnum 200 Wheeled	200					
Magnum 220 Wheeled	220		CVT			
Magnum 240 Wheeled	240					
Magnum 250 Wheeled	250	8.7 L	Powershift/CVT			Four remotes standard; up to six optional remotes. 44 gpm standard flow with up to 75 gpm optional. Standard laser/GPS interface.
Magnum 280 Wheeled	280					
Magnum 310 Wheeled	310					
Magnum 340 Wheeled	340		CVT			
Magnum 380 Wheeled	380					
Steiger 470 Wheeled	470	12.9 L	Powershift with Diesel Saver APM automatic shift technology and 2 reverse gears, with 16Hi	Heavy-duty planetary bar axles on wheel models; flanged axle on Quadtrac models. Standard diff lock & internal wet brakes on front and rear axles.		Four remotes standard; up to eight optional remotes. 57 gpm standard flow with up to 113 gpm optional. Standard laser/GPS interface.
Steiger 500 Wheeled & Quadtrac	500					
Steiger 540 Wheeled & Quadtrac	535					
Steiger 580 Wheeled & Quadtrac	580					
Steiger 620 Wheeled & Quadtrac	620					



## MAGNUM POWER ADDS VERSATILITY TO YOUR JOBSITE.

Industry-leading power growth up to 14 percent for unmatched performance in tough pulls. With Case IH Magnum tractor power, you can count on increased productivity in your land leveling and commercial scraper operations. With up to 35 additional horsepower, a Magnum tractor is designed to efficiently pull scrapers at speeds above 4 mph. Plus a 4-point suspended cab and suspended axles make your long, rocky day a lot more comfortable.



## BUILT TO WORK IN THE DIRT.

Construction managers now know what farmers have known for decades: Case IH Steiger and Magnum tractors have the power you need to get the job done – from site prep to land leveling to general earth moving. The Steiger 620 delivers 10 percent power growth for 682 peak horsepower, to handle the largest scrapers. It has a two-stage turbocharger system: a small turbocharger provides low end responsiveness and a second, larger one offers maximum boost at high RPMs. And if you don't need that kind of muscle, there are plenty of other options from which to choose.



Steiger 4-point cab suspension - the first in the industry - shown here.

### CAB SUSPENSION FOR A SMOOTHER RIDE

Case IH cab suspension systems stabilize cab motion to give the operator a smooth ride — regardless of terrain. Standard on Steiger Quadtrac and Rowtrac and optional on Steiger and Magnum wheeled models, the system reduces jarring and bouncing to give you greater focus on the job and more control over your tractor.

SCRAPER SIZE	TRACTOR DRAWBAR HP REQUIREMENT*
10 yard (9.14 m)	150 Drawbar HP
15 yard (13.7 m)	225 Drawbar HP
17 yard (15.5 m)	255 Drawbar HP
20 yard (18.3 m)	300 Drawbar HP

\* Tractor must be configured for scraper work.





### RELIABLE PERFORMANCE, DAY IN AND DAY OUT.

When you're on the job, uptime is the bottom line. You have to keep moving and so does your equipment. Rugged frames, durable drive trains, and powerful, fuel-efficient engines are the keys to durability and productivity.



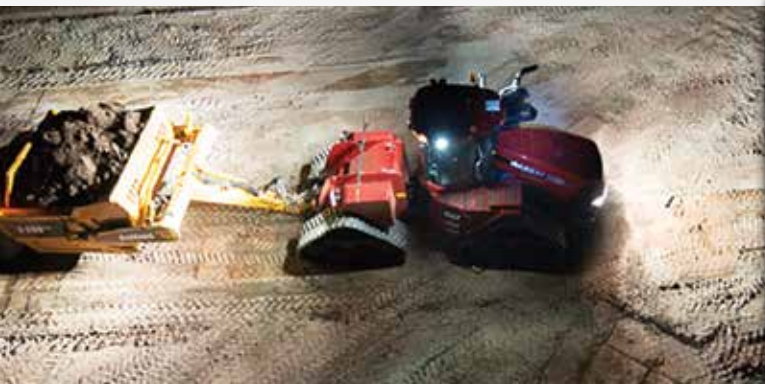
### HARD WORK SHOULDN'T BE A PAIN IN THE NECK.

Autoguidance systems give you more freedom in the cab to look back and check on implement operations. So your tractor's seat shouldn't force you to keep looking forward. The Case IH industry-leading 40-degree, right-hand swivel seat in Steiger tractors gives you an exclusive 360-degree full field of vision that keeps you from having to strain your neck all day. The cab, radio and HVAC controls are on the upper right, too, so everything is within easy reach.



### HELPING YOU KEEP THINGS UNDER CONTROL.

In addition to CVT transmission options, Case IH powershift tractors feature the Case IH Diesel Saver™ Automatic Productivity Management (APM) system that helps maintain speed through the cut. APM automatically upshifts or downshifts as the load, grade or soil condition changes, ensuring peak speed and fuel efficiency. All Steiger and Magnum 250–380 scraper tractors have an engine brake option that provides added control of your load on slopes.



### UNPARALLELED VERSATILITY, NIGHT AND DAY.

Tractors with pull-behind scrapers give you the flexibility to perform scraper operations plus packing, ripping and disking. You can also choose from a variety of tools to reclaim ground and re-establish the landscape. And your work doesn't have to be limited to daylight hours either. The Steiger lighting system is five to six times brighter than standard lighting, and HID lighting lasts 6,000 hours longer than traditional lighting. Add optional roof lighting, and the area around the tractor is flooded so you can hit your marks and hit your deadline, even after sunset.



## BIG TRACTORS FOR THE BIGGEST CONSTRUCTION JOBS.

All Steiger tractors feature massive, heavy-duty axles that can carry up to 66,000 pounds of operating weight. That's the most weight any tractor in its class can handle. Figure in heavy-duty drawbars, built-in frame weight and a rugged transmission, and you'll see why Steiger tractors really are a big deal. The longer wheelbase and built-in weight of a heavy frame on Steiger 470 tractors provide more power to the ground plus the heft and durability needed for earth moving work. The wide frame of 500, 540, 580 and 620 HD wheeled models set new productivity benchmarks for the industry. Features like heavy-duty drivetrain components, 113-gallon-per-minute hydraulic flow and power growth up to 682 peak horsepower are raising the bar as well.



### BUILT SPECIFICALLY FOR EARTHMOVING WORK.

Case IH scraper tractors come standard with lots of features that have big benefits for earth moving:

- a cab with unmatched comfort, visibility and practicality
- a seat that swivels 40 degrees to the right for unmatched visibility of your attachment
- differential locks
- backup alarm
- tow cable
- 20,000 lb. scraper drawbar
- antivandalism lockdown package
- ROP/FOPS (Roll Over Protection/Falling Object Protection Structure) certified to 66,000 lbs.
- Full cab suspension (standard on Quadtrac tractors; optional on wheeled tractors)



### MORE POWER. MORE DURABILITY. MORE PROFIT.

Steiger scraper tractors come with four standard hydraulic remotes with the option to add four more. Quick-attach heavy-duty scraper drawbar is designed specifically for scraper demands.





## LARGEST CAB IN THE INDUSTRY.

Case IH tractors work for you with a cab that allows greater freedom of movement in your seat to extend your view, and engineering that stabilizes your ride, reducing the shaking and bumping of uneven terrain. All with controls that are close by and easy to use.

**A "A-POST" STYLE INSTRUMENTATION** places important status information in your natural line of sight and don't interfere with visibility.

**B BUILT-IN ARMREST CONTROL SWITCH** provides an ideal interface for various laser guidance or GPS system monitors, allowing automatic adjustment of the scraper to control the grade.

**C AFS PRO 700 CONTROL CENTER** puts controls and maps at your fingertips.

**D SUSPENDED CAB OPTION** combined with Optima seat provides the most comfortable cab in the industry. Standard on Quadtrac models; optional on wheeled models (not shown).

**E THE MULTIFUNCTION CONTROL HANDLE** puts 85% of the controls operators use most at your fingertips.

**F THE VENTILATED SEAT** has heating and air conditioning and a slide-out cushion for leg support.



## FOUR IS GREATER THAN TWO.

Thanks to the size of its footprint and its one-of-a-kind design, the Steiger Quadtrac footprint allows an earlier start on the job than competitive track designs, as it has proven over and over again in commercial and agricultural applications. Four individually driven tracks, each with three idler wheels, create more ground contact area for better flotation, traction and easier transport. The design distributes loads evenly across the length of each track – even under load. Two-track systems can dramatically transfer weight from the front to the back, sometimes even lifting the front end off the ground, resulting in loss of traction.



### FULL POWER IN TURNS.

Unlike two-track systems that vary power to each track during turns, Quadtrac tractors keep full power in turns under load. No additional power is required to turn. The articulated steering of a Steiger Quadtrac operates like a typical 4WD wheeled tractor, preventing ridging and berming.



### EASY MAINTENANCE TRACKS.

Today's Case IH Steiger Quadtrac tractors also have an undercarriage that is nearly maintenance-free with clear caps and sight gauges. In addition, sight gauges for hydraulics, transmission and fuel tank are at ground level for easy monitoring.



## MAGNUM POWER EXCELS ON YOUR JOBSITE.

Thanks to class-leading power, Case IH Magnum tractors offer unmatched performance in tough pulls. You can count on increased productivity in your land leveling and commercial scraper operations. With up to 14% power growth and up to 35 additional engine horsepower, the powertrain of a Magnum tractor is designed to efficiently pull scrapers at speeds above 4 mph.



### UNLIMITED POSSIBILITIES, MAXIMUM VERSATILITY: MAGNUM 180–240 TRACTORS

Get the maximum benefit from your Magnum 180 to 240 (rated at 180 to 240 engine horsepower) with the standard, 19-speed full powershift transmission. Magnum 180 to 240 tractors—now available with front duals—are a perfect match for smaller scrapers.

### POWER FOR MORE LOADS IN A DAY: MAGNUM 250–380 TRACTORS

Magnum 250 to 380 tractors have the power to take on the toughest tasks. Handle hard-pulling applications with 250 to 380 engine horsepower, up to 14 percent power growth and 35 engine horsepower power boost. More built-in ballast improves traction, reduces compaction and means your tractor's horsepower gets to the ground.

### SMOOTH POWER TO THE GROUND – NEW HIGH-HORSEPOWER MAGNUM CVT OPTION

Experience the industry's leading Continuously Variable Transmission (CVT). The CVT uses proven Case IH technology to deliver uninterrupted power to the ground, adapted with four ranges to be more efficient and deliver more power for tough jobs. The Case IH CVT automatically adjusts to match ground speed and load.





### KNOWLEDGEABLE DEALERS THAT WORK WITH YOU.

Your Case IH dealer understands you need to optimize the return on your investment. That means fitting the right horsepower and capabilities with the tools and implements that best fit your operation. Your dealer can recommend the appropriate options package, with proper tires and weighting and ballasting packages for optimum performance. And he or she will analyze results with you, field by field.



### MAXIMUM SERVICE TO GET MAXIMUM UPTIME, SEASON AFTER SEASON.

Case IH offers Max Service, the first owner's support network in the industry. And it comes with no extra cost to you. Max Service delivers manufacturer-direct assistance to you and your Case IH dealer. If you need service, parts or just have a question, Case IH staff will quickly respond to your unique situation. Your Case IH dealer already has a full-line of parts and components, full-service maintenance programs and industry-leading warranties. Max Service gives you even more resources to boost productivity with your Case IH equipment. And minimize downtime. Your complete satisfaction is our goal. Your dealer and Max Service are here for you whenever you need help at 1-877-4CASEIH.



### FINANCING AND EQUIPMENT PROTECTION TAILORED TO CASE IH EQUIPMENT AND YOU.

CNH Industrial Capital is your financial connection every step of the way, and each day we help producers like you get into the right Case IH equipment to support the unique agricultural needs of your business. Specialized finance programs and flexible leasing packages put you in the driver's seat of industry-leading Case IH equipment while staying within your budget. After your purchase, keep your equipment up and running with the CNH Industrial Capital Commercial Revolving Account for your Case IH parts & service needs, and insure your equipment with our no-nonsense warranties and comprehensive protection plans. As the only finance company dedicated to Case IH, we offer the products and services designed to help you Be Ready.



### FLEET-FRIENDLY FLUID OPTIONS.

Thanks to new fluid formulations from Case IH, Case IH equipment owners need only stock three key fluids for their fleets. Case IH Hy-Tran® Ultraction™ can be used in the transmission and hydraulic system of every Case IH machine, including those with CVT transmissions.

Similarly, the new Case IH No. 1 15w40 and synthetic SSL 10w40 engine oils now carry the CJ-4 rating so that a single oil can be stocked as the sole diesel engine oil for mixed fleets, regardless of their emissions equipment. In fact, CJ-4 engine oils can be used in all diesel vehicles in your fleet, including pickups and heavy-duty trucks.

New Actifull™ OT coolant is formulated to provide full protection in Case IH Tier 4 B engines to resist deposit buildup and other issues that can occur in extreme temperature and pressure conditions.



STEIGER MODEL	470 WHEELED		500 WHEELED / QUADTRAC		540 WHEELED / QUADTRAC		580 WHEELED / QUADTRAC		620 WHEELED	
POWER										
Engine Type	Tier 4 B/Final with Selective Catalytic Reduction (SCR)									
Engine HP at Rated RPM (per SAE)	470 hp @ 2,000 rpm		500 hp @ 2,100 rpm		535 hp @ 2,100 rpm		580 hp @ 2,100 rpm		620 hp @ 2,100 rpm	
Peak Engine HP at 1900 RPM	517 hp @ 1800 rpm		550 hp @ 1900 rpm		605 hp @ 1900 rpm		638 hp @ 1900 rpm		682 hp @ 1900 rpm	
Cylinders/Number of Valves/Displacement	6 cyl./24 valves/12.9L (787 cu. in.)									
Engine Aspiration	Variable geometry turbocharger		Turbocharged (wastegate) with air to air aftercooling		Turbocharged (2 Stage) with air to water intercooling and air to water aftercooling					
ELECTRICAL										
Alternator/Battery	200 amp/2-12V batteries						240 amp/2 12-volt batteries			
TRANSMISSION/PTO										
Transmission – Standard	Full powershift with APM Diesel Saver Automatic shift technology, 16F/2R w/16 hi (25 mph / 40 kph)									
PTO – Optional	1,000 rpm – 1 ¾ in shaft									
AXLES										
Rear Axle Diameter – Wheeled / Quadtrac	5 in. (127 mm) planetary		4.5 in. (114 mm) compound planetary / flanged				5.5 in. (140 mm) compound planetary / flanged			
Axle Width – Wheeled / Quadtrac	120 in. (3 048 mm) / 90.3 in (2 294 mm)									
Wheelbase	148 in. (3 759 mm)		154 in. (3 912 mm)							
Differential Lock	Standard									
HYDRAULICS										
Remote Valves – Standard / Optional	4 / Up to 8									
High Flow Hydraulic Pump (PFC)	57 gpm (216 lpm)									
Total Tractor Hydraulic Flow with Parallel/Twin Flow Pumps	113 gpm (428 lpm)									
Available Flow at Single Remote Valve	35 gpm (132 lpm)									
CAPACITIES										
Fuel Tank – Wheeled / Quadtrac	310 gal (1 170 L)						455 gal (1 722 L) / 470 gal (1 779 L)			
Diesel Exhaust Fluid (DEF) Tank	42 gal (174 L)		66 gal (250 L)				66 gal (250 L)		85 gal (322 L)	
Vertical Tongue	20,000 lbs. (9 072 kg)									
CAB										
Volume (Size)	132 cu. ft. (3.7 cu. m)									
Glass	88.1 sq. ft. (8.18 sq. m)									
WEIGHT										
HD Wheel Models - base shipping weight	43,239 lbs. (19 612 kg)		47,273 lbs. (21 443 kg)		47,284 lbs. (21 448 kg)		52,293 lbs. (23 720 kg)		52,293 lbs. (23 720 kg)	
HD Wheel Models -Max. Gross Vehicle Weight	49,500 lbs. (22 453 kg)		56,000 lbs. (25 401 kg)		56,000 lbs. (25 401 kg)		66,000 lbs. (29 937 kg)		66,000 lbs. (29 937 kg)	
Quadtrac Models - base shipping weight	N/A		53,256 lbs. (24 157 kg)		54,536 lbs. (24 737 kg)		56,422 lbs. (25 593 kg)		N/A	
Quadtrac Models -max. gross vehicle weight	N/A		60,000 lbs. (27 216 kg)		60,000 lbs. (27 216 kg)		64,000 lbs. (29 030 kg)		N/A	



MAGNUM MODEL	MAGNUM 180		MAGNUM 200		MAGNUM 220		MAGNUM 240	
ENGINE								
Engine Type	Tier 4B with Selective Catalytic Reduction (SCR)							
Engine HP @ rated 2,100 RPM (Magnum 180–240) ISO/ECE R120 (CV)	180		200		220		240	
Maximum Engine HP @ rated 1,800 RPM ISO/ECE R120 (CV)	200		220		240		260	
Maximum Boosted Engine HP @ rated 1,800 RPM ISO/ECE R120 (CV)	225		245		260		270	
PTO HP @ rated 2,100 RPM (Magnum 180–240) per SAE	155		170		185		205	
Cylinders/Number of Valves/Displacement	6 cyl./24 valves/6.7 L							
Engine Aspiration	Turbocharger wastegate							
Engine Compression Brake	NA							
ELECTRICAL								
Alternator/Battery	12V batteries (200 amp)							
TRANSMISSION/PTO								
Powershift: 18 Speed–25 MPH (40 kph)	NA							
Powershift: 19 Speed (Economy)–25 MPH (40 kph)	Standard						NA	
Powershift: 19 Speed–30 MPH (50 kph)	Optional						NA	
CVT Transmission–25 MPH (40 kph)	Optional						Standard	
CVT Transmission: 30 MPH (50 kph)	Optional							
Rear PTO - Standard/Optional	540/1,000 RPM 1 3⁄8 in. (35 mm) shafts /NA							
AXLES								
Rear Axle Diameter - Standard/Optional	4 in.(100 mm)/NA							
Rear Axle Length - Standard/Optional	119 in. (3 020 mm)/112 in. (2 489 mm)							
Suspended Front Axle	Optional							
MFD Tread Adjustability	60–88 in. (1 524–2 235 mm)							
MFD Duals	Optional on class 4.75 axles							
Wheelbase - Powershift	118 in. (3 000 mm)							
Wheelbase - CVT	118 in. (3 000 mm)							
HYDRAULICS/HITCH								
System Type	Pressure Flow Compensating (PFC)							
Remotes - Standard/Optional	3, 4 or 5 Electrohydraulic							
Main Implement Pump Flow	FPS = 41 gpm (156 L/min.)/CVT = 43 gpm (162 L/min.)							
CAPACITIES								
Fuel Tank	160 gal. (600L)							
Diesel Exhaust Fluid (DEF) Tank	17.5 gal. (66L)							
CAB								
Cab Suspension	Optional							
Volume (Size)/Glass (Area)/Cab Sound Level	109.5 cu ft. (3.1 m³/68.5 sq. ft.) /67 dBA							
WEIGHT								
Average Shipping Weight	21,500 lbs. (9 750 kg)							



MAGNUM MODEL	MAGNUM 250		MAGNUM 280		MAGNUM 310		MAGNUM 340		MAGNUM 380	
ENGINE										
Engine Type	Tier 4B with Selective Catalytic Reduction (SCR)									
Engine HP @ rated 2000 RPM	250		280		310		340		380	
Maximum Engine HP @ rated 1,800 RPM ISO/ECE R120 (CV)	285		315		345		375		415	
Maximum Boosted Engine HP @ rated 1,800 RPM ISO/ECE R120 (CV)	320		350		380		410		435	
PTO HP @ rated 2000 RPM (Magnum 250 – 380) per SAE	205		235		265		290		315	
Cylinders/Number of Valves/Displacement	6 cyl./24 valves/8.7L									
Engine Aspiration	Turbocharger wastegate		Turbocharger eVGT							
Engine Compression Brake	Optional									
ELECTRICAL										
Alternator/Battery	200 amp/2-12V batteries									
TRANSMISSION/PTO										
Powershift: 18 Speed – 25 MPH (40 kph)	Optional							NA		
Powershift: 19 Speed (Economy) – 25 MPH (40 kph)	Standard							NA		
Powershift: 19 Speed – 30 MPH (50 kph)	Optional							NA		
CVT Transmission: 25 MPH (40 kph)	Optional							Standard		
CVT Transmission: 30 MPH (50 kph)	Optional									
AXLES										
Rear Axle Diameter - Standard/Optional	4 in.(100 mm)/4.5 in. (115 mm)				4.5 in.(115 mm)/NA				5 in.(127 mm)/NA	
Rear Axle Length - Standard	120 in. (3 050 mm)/NA									
Suspended Front Axle	Optional									
MFD Tread Adjustability	60 – 88 in. (1 524 – 2 235 mm)									
MFD Duals	Optional on Class 4.75 and Class 5 axles									
Wheelbase - Powershift	120 in. (3 050 mm)							NA		
Wheelbase - CVT	122 in. (3 100 mm)							124 in. (3 150 mm)		
HYDRAULICS/HITCH										
System Type	Pressure Flow Compensating (PFC)									
Remotes - Standard/Optional	4 Electrohydraulic/5 or 6 Electrohydraulic									
Main Implement Pump Flow	44 gpm (166 L/min.) / 59 gpm (225 L/min.) or 75 gpm (282 L/min.)									
CAPACITIES										
Fuel Tank	Powershift: 179 gal. (678L)/CVT: 163 gal. (617L)									
Diesel Exhaust Fluid (DEF) Tank	26 gal. (99L)									
CAB										
Cab Suspension	Optional									
Volume (Size)/Glass (Area)/Cab Sound Level	109.5 cu ft. (3.1 m³/68.5 sq. ft.)/67 dBa									
WEIGHT										
Average Standard Weight	28,600 lbs. (1 2 973 kg)				28,800 lbs. (13 082 kg)		29,600 lbs. (13 458 kg)		32,200 lbs. (14 148 kg)	





SAFETY NEVER HURTS!™ Always read the Operator's Manual before operating any equipment. Inspect equipment before using it, and be sure it is operating properly. Follow the product safety signs, and use any safety features provided. CNH Industrial America LLC reserves the right to make improvements in design and changes in specifications at any time without notice and without incurring any obligation to install them on units previously sold. Specifications, descriptions and illustrative material herein are as accurate as known at time of publication, but are subject to change without notice. Availability of some models and equipment builds varies according to the country in which the equipment is used. ©2014 CNH Industrial America LLC. All rights reserved. Case IH is a trademark registered in the United States and many other countries, owned by or licensed to CNH Industrial N.V., its subsidiaries or affiliates. Printed in U.S.A. [www.caseih.com](http://www.caseih.com)

CIH08151401 Replaces CIH02141401