

Using Prescriptions for Variable-Rate Product Application with the Case IH AFS Pro 700 Display – Non-ISOBUS Vehicles and Implements

INTRODUCTION

The following steps are required for using a prescription on an AFS Pro 700 display with the control systems listed below. This guide is to be used as quick reference only. Please refer to the Operators Manual for specific information and procedures.

NON-ISOBUS CASE IH APPLICATION CONTROL SYSTEMS

- Case IH 12*0/12*5 Series Planters with variable rate seed and/or fertilizer drive
- Case IH Patriot Sprayers & Titan Floaters
- Case IH AFS AccuControl
- Case IH 3rd-party Serial Rate Control (Raven, Rawson, Flexicoil, Hardi)

REQUIREMENTS FOR USE:

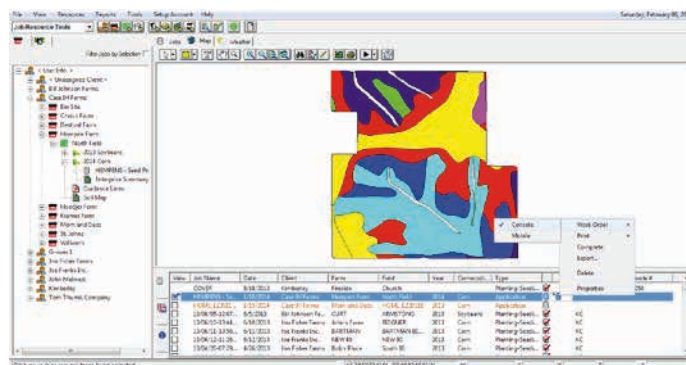
- AFS Pro 700 display operating a Non-ISOBUS Application Control System
- Case IH Approved USB memory device (P/N – 84398840)
- Grower/Farm/Field Hierarchy and Prescription exported to the data card in Voyager 2 format (only one .cn1 folder may exist on the USB device)
- Data created using the correct product form (ex. Seeds per acre can only be used with the Product form of “Seed” (not Bulk Seed, Granular, etc.)
- Application rate is properly identified per unit of measure (sds/acre vs. ksds/acre)
- Maximum number of prescriptions exported per field – 10
- Polygon/Vector Prescription – maximum number of polygons per prescription – 1,000 – or –
- Grid/Raster Prescription – maximum number of rectangles in a field grid – 125,000

INSTRUCTIONS FOR USE:

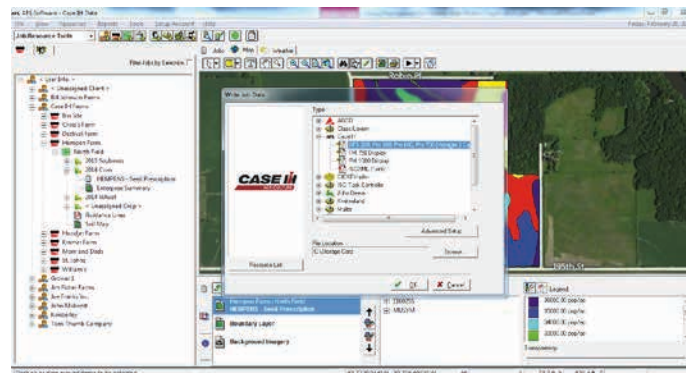
Desktop Software Creation/Exporting

1. Create the desired prescription(s) using a compatible desktop software program, such as AFS Mapping and Records.

Note: The name/title of the prescription should be limited to 18 or less characters. The AFS display will only display the first 18 characters of the name when selecting the prescription.



2. Export the prescription(s) to a compatible USB memory device in Voyager 2 format (CNH part number 84398840).



3. Insert the USB memory device into the AFS Pro 700 with the display powered off. Once the USB stick is inserted, then power up the display.

INSTRUCTIONS FOR USE (CONTINUED)

12*0/12*5 Series Planters Only: Work Condition layer assignments, Product Setup & Prescription Assignments may also be accomplished through the Planter Wizard, if installed.

Product Setup

4. Navigate to **Toolbox>Product**



- 5a. If Products were exported from the desktop software, the Products will be available for viewing/editing. Check all settings (Form, Default Rate, Min/Max App rate, etc.).

Note: Adjust the Min./Max. rate range to include all prescription rates.

- 5b. If no Products were exported, create the desired Products and enter in all the correct default settings.

Product Setup	
Product Name	Form
E1602SS	Seed
	Crop
	Corn
Default App Rate	Delta App Rate
34.0 ksds/acre Units	1.0 ksds/acre
Min App Rate	Max App Rate
23.0 ksds/acre	36.0 ksds/acre
Package Size	RX Scale Factor
56.00 lb Units	1 : 1.0000
Product Density	Unit Density
0.00 lb/gal Units	1428.00 sds/ Units

IMPORTANT! Check that the Min. and Max. application rate range is properly adjusted for each Product.

Mapping/Application Layer Set-up

6. Navigate to **Work Condition > Layer**



7. Create or select a **Work Condition**.
8. Assign control channels to each map Layer as needed, then assign a Product to each control channel.

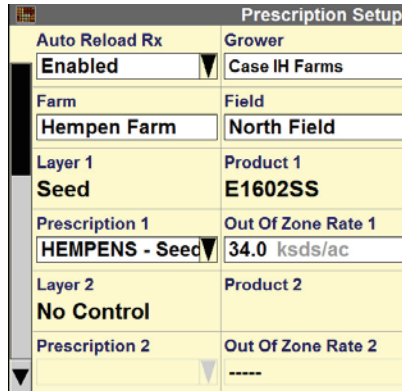
Layer Assignment	
Work Condition	
Corn Prescription	
Layer 1	
Seed	
Product 1	Container 1
E1602SS	None
Layer 2	
No Control	
Product 2	Container 2
	None

Prescription Assignment

9. Navigate to **Performance > RxSetup**

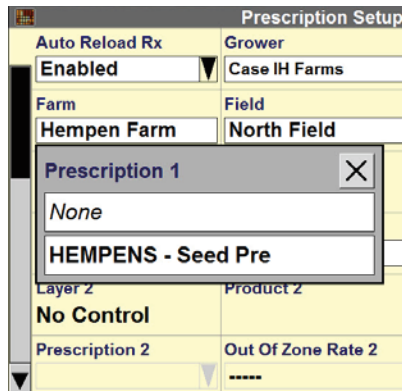


10. Change 'Auto-Reload Rx' to **'Enabled'** to automatically reload the Prescription after a display shut down/power-up cycle



11. Select the Grower, Farm, and Field that contains the desired Prescription(s).

12. For each map layer, select the desired Prescription from the Prescription window picklist.



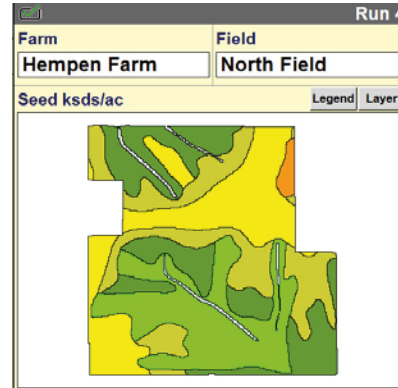
13. Check/fill in the 'Out of Zone Rate'. This is the default rate used when applying outside of the defined Prescription zones.

Run Screen/Operation

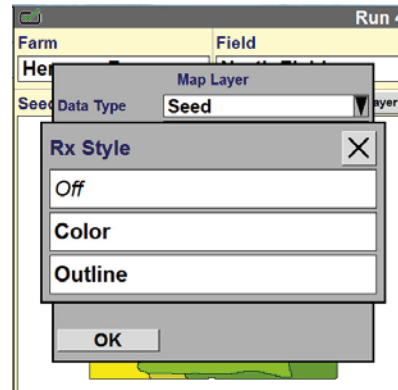
14. Navigate to **Back>Run**



15. Find the Run Screen with the As-Applied Map.



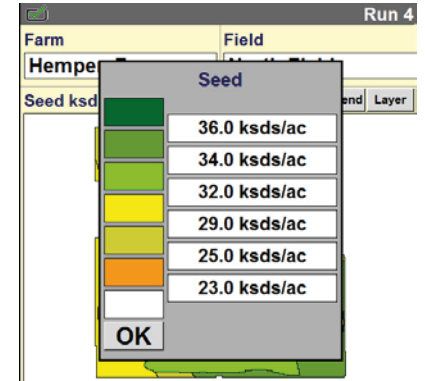
16. The Prescription, Boundary, etc. should be visible on the map. Press any area of the map to cycle through the viewable layers. (i.e. coverage, fuel economy, as-applied).



Note: If the prescription map is white and is only outlined, the map is likely being viewed in "Outline" mode. This can be changed by pushing the 'Layer' button, selecting 'Rx Style' and choosing the 'Color' option.

Run Screen/Operation (continued)

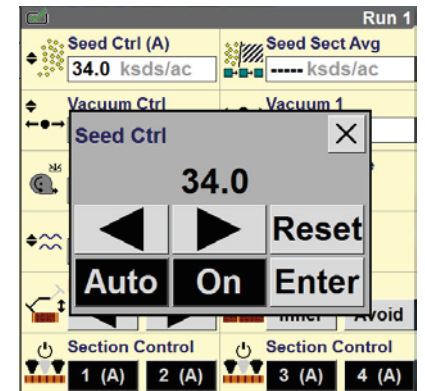
17. Adjustments to the Legend and Layer may be needed to view the colored regions.



18. To see all regions of the prescription, change the Legend of the prescription.

Note: All pre-set rates of the prescription will be used by the software, even if the legend is not adjusted.

19. The current rate and rate control mode: (A) - Auto, (M) - Manual will be viewed in the 'Ctrl' window.



20. The prescription can be enabled or disabled by pressing the 'Auto' button. When the 'Auto' button is highlighted black that prescription is enabled. If not highlighted black, the prescription is disabled.

AFS-8091-14 Replaces: None

©2014 CNH Industrial America LLC. All rights reserved. Printed in U.S.A. Case IH is a trademark registered in the United States and many other countries, owned by or licensed to CNH Industrial N.V., its subsidiaries or affiliates.

CNH America LLC reserves the right to make improvements in design and changes in specifications at any time without notice and without incurring any obligation to install them on units previously sold. Specifications, descriptions and illustrative material herein are as accurate as known at time of publication, but are subject to change without notice. Availability of some models and equipment builds varies according to the country in which the equipment is used.

Visit us on the web at www.caseih.com



