

# CORPORATE FARMING SOLUTIONS

CEREALS BUSINESS



CORPORATE FARMING

**CASE** **III** **CASE** **IVECO** **CNI** PARTS & SERVICE  
AGRICULTURE CONSTRUCTION INDUSTRIAL

**CASE**  
CONSTRUCTION



# THE BUSINESS OF AGRICULTURE

CNH INDUSTRIAL  
OFFERS EVERYTHING YOU NEED



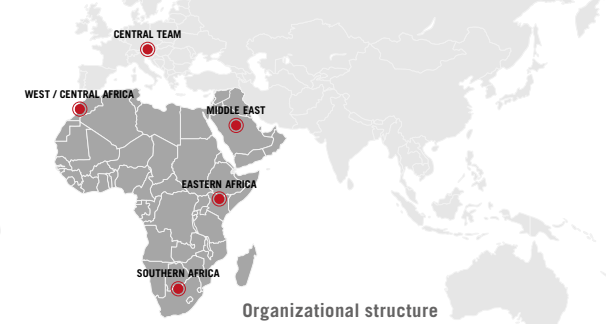
**CASE IH**  
AGRICULTURE

**IVECO**



As part of CNH Industrial, one of the world's largest capital goods companies, Case IH and its sister businesses can offer the largest agricultural producers a complete line of equipment for progressive agriculture. That means not just a respected range of Case IH tractors, harvesters and farm machinery. Through the Case construction equipment brand, we can also provide the machines to shape and improve the land. And via our Iveco business, comes a range of dependable, efficient haulage solutions from a complete line of trucks. All these products are backed by the same level of support you would expect to be behind any CNH Industrial machine. If you have a challenge, we have the solution.

**CASE IH. BACKED BY THE POWER OF CNH INDUSTRIAL.**



# CORPORATE FARMING

## DEDICATED SUPPORT FOR PROFESSIONAL BUSINESSES

Case IH has many years' experience in dealing with the specific demands and requirements of corporate farming customers. We understand the needs of businesses for whom a turnkey approach to mechanising all aspects of a large-scale farming business makes sound management sense. Our specialist teams are available to support such buyers with a full package of consultancy, machine selection and management tools, finance advice and more.

These corporate farming teams are formed of advisers who have wide experience of equipping such enterprises, and are dedicated to helping their clients make large-scale management decisions. They are able to offer exactly the level of professional advice required on the best way to equip the very largest of farming operations with the equipment necessary to run them as efficiently as possible.

Corporate buyers have direct contact with dedicated Case IH corporate farming specialists to enable every essential detail of the relationship between the farming enterprise and its equipment to be finely tuned at every stage, from selection through delivery to operation and eventual replacement. Our advisers, individually responsible to corporate buyers, are experts in regional agriculture, and help formulate mechanisation

plans to suit the agronomic requirements of individual businesses, taking into account variations in climate, soil type and cropping. But they also understand that farm equipment has to do more than simply plant, treat and harvest crops – it has to make the maximum return possible for the business. That's why their expertise also covers economic and financial issues. They are available to provide full practical advice on the best methods of finance and the ideal replacement policy.

Once your machines are delivered, your operators will have available to them the very best training, to ensure they are able to extract the full return from your investment. They can be equipped with the very latest in precision farming equipment and telematics monitoring, to ensure they are always operating as they should be, and to their full potential. In addition, they will be kept running by the highest levels of service and parts support.

In this way, our aim is to make the ownership of a large farming enterprise – and in particular the detail of mechanizing it – as simple and economic as possible, for the highest returns. With Case IH as your corporate farming partner, you can rest assured that you are working with experts who know agriculture inside-out.

BEFORE



AFTER



# THE CEREAL CROPS PRODUCTION CHALLENGE

## BEATING THE WEATHER, PROTECTING CROP QUALITY

Every farmer faces challenges in nurturing crops from establishment through to harvest, but growers of cereals and other combinable crops are more dependent than most on maximising output and efficacy in short weather windows. Whether it's the need to establish crops before soils dry out, spray them before it gets too windy or harvest them before rain comes, reliable, high-output equipment is essential.

Case IH has extensive experience in the demands of cereal and combinable crop production around the world, from

Africa to Asia and from the Americas to Australia. Our Axial-Flow® combine range has proven itself over almost 40 years to perform with maximum output and minimal losses in a huge variety of crops, from wheat to maize/corn and rice to beans and many more besides. Our customers use Case IH machines to clear, level and cultivate land, and to fertilize, treat and harvest crops. And they return to us time after time because of our commitment to supplying them with reliable, high performance products that provide high levels of productivity and efficiency.





**CASE**  
CONSTRUCTION



**ALL YOU NEED FROM A SINGLE SOURCE**

CNH INDUSTRIAL:  
EVERYTHING YOU NEED FOR AGRIBUSINESS



# IVECO



**CASE IH**  
AGRICULTURE

Today's agriculture demands much more than reliable farm equipment. It requires capacity, capability, speed and precision. Those qualities are evident not just in Case IH agricultural machines, but in the graders, dozers and loaders offered by Case Construction Equipment. And by the transport vehicles you will find in the Iveco range. As they are sister brands under our parent company CNH Industrial, that's no coincidence. For farming on the largest scale, you'll find everything you need under the CNHi banner.

# CNH INDUSTRIAL

A GLOBAL LEADER IN THE CAPITAL GOODS SECTOR



Through its various businesses, CNH Industrial designs, produces and sells agricultural and construction equipment, trucks, commercial vehicles, buses and specialty vehicles, through a portfolio of well-known brands including Case IH, Case Construction and Iveco. In addition, through its FPT Industrial division the firm has its own single source of engines and powertrains. Present in all major markets worldwide, CNH Industrial is focused on expanding its presence in high-growth markets, including through joint ventures.



Since 1831, when Cyrus McCormick first showed his mechanical reaper, and 1842, when Jerome Increase Case founded his threshing machine company, Case IH has aided farmers around the world by helping ease their workloads, increase efficiencies, boost productivity and raise profitability. Industry leaders such as Steiger and Quadtrac tractors and Axial-Flow combines head up high-output farm machinery fleets around the world, chosen for those same qualities. Today, Case IH offers a full line of farm equipment that suits the nature of almost every type and scale of agricultural operation.



**CASE**  
CONSTRUCTION



Case has been in the business of earth moving for more than 170 years, and today sells and supports a full line of construction equipment around the world. Its product history includes the first ever factory-integrated backhoe loader, while today's product range includes a complete line of equipment that, in many cases, has a role to play in land clearance. That comprises excavators, motor graders, wheel loaders, vibratory compaction rollers, crawler dozers, skid steers, compact track loaders and rough-terrain forklifts.

**IVECO**



A global manufacturer of light, medium and heavy commercial vehicles, Iveco designs, manufactures and markets a wide range of light, medium and heavy commercial vehicles for road and off-road use. Committed to safe, efficient and sustainable mobility, Iveco has been investing in the development of alternative drive systems for over 30 years. Iveco Bus, strong supporter of sustainability and leading brand in this sector, offers a complete range of vehicles for transporting people, from urban and intercity buses to tourism coaches and minibuses, while promoting ongoing synergies with both public and private players in the transport sector.



# CASE IH. WE ARE READY

## THE BACKING YOUR BUSINESS DESERVES

Instantly identified by its machines' signature red colour, Case IH builds upon a tradition of leadership in agricultural equipment which stretches back to 1842.

A global provider of powerful, reliable and high performance equipment, Case IH leverages on being part of world's #4 capital goods corporation, CNH Industrial. CNH Industrial's expertise spans industries and continents, building upon a great tradition of significant contribution to the development of technological know-how. Its 12 brands continue to deliver their customers with state-of-the-art technology as global leaders in their respective segments.

### WORLDWIDE

- 48 R&D Centers
- 62 plants
- 72,200 employees
- \$ 2.3 billion trading profit





## HISTORY AND FUTURE

### FOR NEARLY TWO CENTURIES, CASE IH HAS BEEN A KEY CONTRIBUTOR TO THE TRANSFORMATION OF AGRICULTURE

**1831:** Cyrus Hall McCormick invents the mechanical reaper.

**1842:** Jerome Increase Case establishes Racine Threshing Machine Works in Racine, Wisconsin.

**1869:** J.I. Case and Company produces the first steam engine tractor, which is wheel mounted, but still drawn by horses.

**1892:** Case is the first to build a gasoline tractor, called the "Paterson Tractor."

**1902:** International Harvester Company is founded on July 28, 1902. The new company accounted for 90 percent of the grain binder business.

**1923:** Bert Benjamin builds first successful row crop tractor, the Farmall, and files for a patent the same year.

**1942:** International's No. 123-SP (self-propelled) combine was released in 1942. The self-propelled model featured an IH six-cylinder engine and 12-foot cutter bar.

**1955:** The No. 141 Hillside combine was the first machine to level hydraulically with a system to level the platform both fore and aft as well as side to side.

**1958:** John Steiger and sons Douglas and Maurice successfully build the first Steiger tractor during the winter of 1957-58.

**1977:** The launch of the Axial Flow combine revolutionizes the industry with its simplicity, grain quality, grain savings, crop adaptability, unmatched capacity and excellent sale value.

**1988:** Case IH introduces the Magnum tractor – the first all-new machine to come from the combined engineering of International Harvester and Case.

**1995:** Case IH launches Advanced Farming System (AFS), a state-of-the-art precision farming system.

**1996:** Steiger Quadtrac tractor is introduced. The 360-horsepower vehicle has four separate tracks and articulated steering.

**1996:** Case IH buys Austoft and begins producing cane harvesters, under the CASE IH name, painted in red.

**2009:** Case IH launches continuously variable transmission (CVT) technology on tractors.

**2009:** The 9120 Axial-Flow was the industry's first class IX combine, had a 12.9-liter Iveco engine rated at 483 hp and introduced the 126-knife MagnaCut™ chopper along with other features, including optional heated red leather seats.

**2015:** The Axial-Flow® 140 and 240 series combines are introduced, and quickly proven to produce the highest grain quantity and quality to meet the needs of any operation.

**Today:** The Case IH product range continues to evolve, with new products including the fuel-efficient Tractor of the Year-winning Optum 300 CVX featuring a low weight design easily ballasted for heavy tasks. Case IH is also firmly focused on future tractor design, with the unveiling of the Autonomous Concept Vehicle (ACV).





# THE MACHINES TO MEET EVERY NEED

## THE POWER AND PRECISION TO SCRAPE, GRADE AND LEVEL

Where there is land to be cleared, there is a Case dozer model that's made for the task – whatever the scale of the operation. With three models from 151-246 hp (peak), the Case M-Series dozers have the power to put in a full performance in even the most difficult of terrain. Each is equipped with an engine that incorporates the latest in electronically-controlled common rail fueling technology, for fuel economy that is improved by 10% as a result. Turbocharging and air-to-air intercooling provide further enhancements to the power package. Wide choices of dozer blade and ripper options cater for every need. Case crawler excavators are designed

for the sort of tough conditions found in ground clearance operations, with high-strength track systems and high-performance hydraulics. The line spans five models, from the CX130B to the CX240B. Maximum power outputs span 96-177 hp, and maximum digging depths, depending on the length of dipper specified, range from 5.54 m to 6.65 m. Designed to be easy to operate and easy to maintain, Case CX excavators feature cabs that will keep your operators productive and service access that will ensure these machines are maintained with precision. All models are available with a wide range of buckets to suit every operation.

### CASE M-SERIES DOZERS ...

- M-SERIES
- 151-246 peak hp
- Turbocharged and intercooled
- Dozer blade and ripper options

### CASE CX-B EXCAVATORS ...

- Five models
- 96-177 hp max power outputs
- 5.54-6.65 m max dig depth
- Range of bucket options



# LEVEL YOUR LAND

## CASE GRADERS, BACKHOES AND WHEEL LOADERS

### **CASE GRADERS**

The range of Case graders is built tough to take the harshest conditions and yet leave behind the smoothest surfaces. The three models available, the Case 845B, 865B and 885B feature the ErgoPower transmission with torque converter, plus all-wheel drive with creep mode for precisely-controlled power. A roller-mounted encapsulated slewing ring ensures precise contour following, for the perfect finish whatever the original terrain.

### **CASE 570T/ST BACKHOE LOADERS**

With a history that stretches back decades, and with many thousands of units at work around the world, Case is famous for its backhoe loaders, and the 570T and 570ST are designed and built with that reputation in mind. Rugged and robust yet simple to operate and easy to manoeuvre, they offer high levels of hydraulic power, superb cycle times and impressive tear-out forces at both front and rear.

The two models in the range, offering a choice of 86 hp or 97 hp engines, feature loaders and back actors designed for high work rates, while the tractor units on which they are based are built for power, traction and comfort. With a wide range of bucket options front and rear, these versatile machines can tackle a huge range of tasks.



## CASE WHEELED LOADERS

The Case 521F, 621F, 721F, 821F, 921F, 1021F and 1121F are versatile, multi-purpose wheeled loaders well-suited to demanding applications across a multitude of activities, from land levelling through to the loading of trucks and other general-purpose tasks. They offer payloads from 3.4 to 8.0 tons, and maximum power outputs from 142-347 hp.

Heavy-duty axles with a three-piece housing design and open, auto-locking differentials maximise torque transfer while minimising power losses and tyre wear.

## CASE B-SERIES GRADERS ...

- Three models
- ErgoPower transmission
- Torque converter drive
- All-wheel drive with creep mode

## CASE 570T/ST BACKHOE-LOADERS ...

- Choice of 86 hp or 97 hp models
- 5.57 m or 5.84 m dig depths
- Wide range of bucket options
- 1000-litre standard loader bucket

## CASE F-SERIES WHEELED LOADERS ...

- 3.4-8.0 t payloads
- 142-347 hp max power outputs
- Heavy-duty axles
- Open, auto-locking differentials





# CULTIVATION

## THE TOOLS TO GIVE YOUR CROP THE BEST START

Case IH can provide not only the power required for harvesting field operations, but also almost all of the implements needed for each stage in the crop-growing process. Every plant starts out with an equal chance of producing record-setting yields. However, the stress the plant is subjected to after planting limits its ability to reach its maximum yield potential. The Case IH Ecolo-Til 2500 primary components – Primary Tillage, Root Zone Banding and Seed Bed Preparation – are proven to increase yields. Case IH True-Tandem™ disk harrows provide true-tandem technology for straight, easy pulling and maximum pass coverage. Ideal for primary tillage, seedbed preparation or chemical incorporation, True-Tandem disks feature durability and low maintenance. And for consistent performance field after field, year after year, you

won't find a more heavyweight disk harrow to then break down worked land into perfect planting conditions that the Case IH Heavy-Offset 790, designed to carve into even the most difficult of soils. There is no better partner for Case IH tillage equipment than a Case IH tractor, designed and engineered to the same high quality standards. Case IH Steiger and Magnum ranges span a horsepower bracket from 250-682 hp, providing the power you need for every application from land levelling to haulage. Features such as full powershift transmissions and automatic productivity management (APM) make these machines the most economical, fuel-miserly tractors of their type. And with every one your drivers will experience the same control types and operating logic, such as the trademark Case IH Multicontroller joystick.



# PLANTING AND FERTILIZING

## GET IT GROWING, KEEP IT HEALTHY

Whether your fertilizer application is based around a mounted or pull-type machine, and whatever its distribution system, Case IH has the tractor to provide you with the power to get on the land when needed and get nutrients into the soil.

Case IH Puma and Maxxum tractors have the ideal power, weight and specification to handle the latest generation of applicators, including stool splitter types. And AFS AccuGuide automatic steering systems ensure that fertilizer is applied with the greatest possible precision, putting it right where required by the plant.

The advanced engineering of Case IH air carts allows you to apply seed and fertilizer efficiently, gently and accurately. Case IH air carts go farther between fills, apply several products in a single pass, fill and clean-out fast, and transport easily. The wide stance of Case IH air carts and a selection of tire options provide flotation and stability requirements for any terrain.

Case IH Flex Hoe Series air hoe drills offer the size, configuration and precision you need to match your operation. Our hoe drills combine seeding widths of up to 21.3 m with some of the narrowest transport widths in the industry. In addition, large tank capacities and big, easy-to-use augers mean fewer stops and faster fills. The result is more acres seeded each day. And you can also choose from a wide variety of seed and fertilizer placement options, openers, row packing, trips and shanks. Outstanding results on stubble.



# SPRAYING

## EVERY DROP COUNTS

Today's crop protection products are extremely effective, but they are more costly, and are often applied at low rates. Those factors, and the need to use products responsibly to protect the environment, means their application requires ever-greater precision.

Case IH Patriot self-propelled sprayers have a well-earned reputation for both accuracy and output, but they also offer cane growers the key advantage of far greater clearance than is possible with a tractor and trailed/pull-type sprayer.

Where most tractor/sprayer combinations can provide only around 0.5 m of clearance at most, Patriot sprayers offer at least 1.3 m, and can work in crops of up to 1.8 m high. But it's technology that also sets Patriot sprayers apart.

### ADVANTAGES

- AFS Pro 700 rate controller and a GPS system
- AccuBoom automatically turns off boom sections when the sprayer enters an area that has already been treated, turning the sections back on again when entering an unsprayed area.
- AIM Command manages flow rates by automatically adjusting the output pulse. This ensures a constant application rate at a specific, constant pressure, even as sprayer speed and field conditions change.





# HARVESTING

## HARVEST YOUR SUCCESS

Axial-Flow® combines have long been renowned for their simplicity. While our machines and technology have come a long way over the past four decades, one thing that hasn't changed is this commitment to simple, successful principles – in operation, in servicing, in the management of the machine.

Axial-Flow® 7240, 8240 and 9240 combines are built for the biggest farms, the largest contractors, the highest yields and the most demanding owners and operators – and for the lowest operating costs in every case. At their heart is the proven principle of Axial-Flow® single rotor technology, and

the benefits that it offers: thorough threshing, lower losses, but with the gentlest of grain handling. The Axial-Flow® 5140, 6140 and 7140 combines are designed to meet the requirements of the most demanding specialists running mid-sized arable operations, from professional farms to progressive estates: with the significant reinforcement of the feeders and the increased power of the 6140 and 7140, they all deliver top performances. At their heart are the powerful FPT Tier 2 engines and the proven principle of Axial-Flow® single rotor technology and the benefits that it brings: thorough threshing leading to lower losses, but with the gentlest of grain handling.

## ADVANTAGES

- Tyres or track configurations available
- Made for 12 m controlled traffic farming operations
- Gentle transition of crop from elevator to transition cone
- Larger grain tank capacities of up to 14,400 l
- The unloading auger is available in several lengths to suit all requirements
- Chop or windrow your straw with the integrated chopper
- Numerous functions can be controlled via the joystick and the adjustable right-hand console-mounted display monitors the key combine functions



# HARVESTING

## A WIDE RANGE OF HEADERS HARVEST ANY CROP

Ensure your crops benefit from the wide range of Case IH header offerings. Case IH headers are designed to not only match today's faster field speeds, tougher crop conditions and changing environments, but take on tomorrow's challenges as well.

They are the perfect tools for ever-changing harvesting conditions, different stages of ripeness and every stage during the day, from conditions of dampness to dryness starting in the early morning and ending in the dark of night. Whatever the stage of crop or the time of day, they help save more crop and protect quality.

### 3050, 2030 AND 2010 GRAIN HEADERS - THE CEREAL SOLUTION.

Case IH does everything to bring the best output of quality in different conditions. The design of the 3050, 2030 and the 2010 Grain Headers allows operation in short and long straw crops, quick changeover for canola harvesting and effective handling of weed-infested or laid crops. With their robust design and ease of operation concept every operator will love these headers.

- Available working width from 5.2 to 12.2 m
- Automatic reel speed control
- Telescoping knife on the move to cater for loss free harvesting in long and short straw conditions
- Crop lifters available for laid crops
- Rice version available for the 2030 grain header.

### 3020 FLEX HEADER – THE SOYBEAN SPECIALIST.

Low-growing and low-podded crops such as soybeans present their own challenges at harvest, but with a Case IH 3020 flex header on the front of your Axial-Flow®, you will have the best tool for the task. For high-speed harvesting with minimal losses, there's nothing to match the 3020. It's the specialist for harvesting crops growing close to the soil, hugging the ground to gather every single pod and bean, for minimal seed losses.

- Available working width from 6.1 to 10.6 m
- Flexible knife runs close to the ground contours to gather even low hanging pods
- Fully adjustable suspension with opt cab control
- Can be used rigid for other crops



### **3100 RIGID AND FLEX DRAPER HEADER – GENTLE HANDLING OF THE CROP.**

Draper headers are gaining more popularity among farmers and contractors. The crop is conveyed gently across the draper floor and fed heads-first into the feeder.

- Available working width from 7.6 to 13.7 m
- High speed harvesting in short straw crops and rape seed without losses
- Easy serviceability
- Central knife drive for balanced performance
- Optimization of feeding flow
- Best feeding quality for rice crops

### **4400 & 2100 CORN HEADER.**

Case IH 4400 and 2100 series corn/maize headers offer excellent picking ability in both standing and down corn, increasing grain savings in all circumstances. What's more, they offer unrivalled ease of servicing to ensure they are ready for work in no time at all, and are easily adaptable to changing harvesting conditions.

- Available row units from 6 to 12, with these row spacings: 30, 36 and 38 inch / 70, 75 and 80 cm
- Chopping/non-chopping capability
- Low profile divider design
- Heavy duty drives
- Easy serviceability
- Efficient control of the stalk for maximum output: 4 knives per stalk roll – excellent guidance by the gathering chain

### **3000 PICK UP HEADER.**

Cereals, oilseed rape/canola, beans, peas, lentils, grass seed... the 3000 pick-up header range is the solution to them all. It gently lifts swaths cleanly and tidily with minimal seed losses. The swath is transported gently on the belts to the combine feeder. The pick-up belts cover the total width of pick up, guaranteeing the gathering of all material without running over adjacent swaths.

- Clean and gentle pick up of large single or multi windrows
- Accurate pick-up contour-following via gauge wheels
- Suits all types of crops and high forward speeds
- Easy maintenance and serviceability

**IVECO**





# TRANSPORT

## PROVIDING PULLING POWER WHEREVER IT'S NEEDED

Iveco is a world leading truck and van manufacturer, with a full range of models engineered to perform optimally with any climate, cargo and mission, and suitable for any transport applications.

That's why the Iveco range for Africa and the Middle East has been engineered and properly fitted to be the best performers in the market, adapting to the local context where working conditions are very demanding and climate can become extreme.

All models are distributed in Euro 3 tropical versions and equipped with special equipment to be stronger, allowing them to over-perform and be suitable for any climate and use.

### HEAVY RANGE OFF ROAD APPLICATION

#### Mission: Material, Goods and Cereal Transport and On Site Jobs

- Model: Trakker Tractor 6x4. Up to 440 hp and up to 70 tonnes GCW
  - Equipment: Semi-trailer
- Model: Trakker Rigid 6x4. Up to 440 hp and up to 34 tonnes GVW
  - Equipment: Tipper up to 18 m<sup>3</sup> (goods, rocks, wood...), Crane, Mixer, Skip loader with garbage collector modules, Tanker (water, fertilizer, fuel...), Container transport

#### Mission: Delivery / Haulage / Controlled temperature

- Model: Performer Tractor 4x2. Up to 440 hp and up to 40 tonnes GCW
  - Equipment: Semi-trailer
  - Special Equipment: Mobile Workshop to support on-site maintenance and repair



# MOVING PRODUCT AND PEOPLE

## TRANSPORT SOLUTIONS

Iveco Trakker 6x4 tractor units, powered by engines of up to 440 hp, are the ideal solutions for large-volume transport of goods such as cereals and bulk fertilizers and seed. Capable of operating at up to 70 tonnes gross combination weight (GCW), these trucks can be coupled to semi-trailers, and can also be specified in rigid 6x4 format, operating at up to 34 tonnes GCW for use in tipper formats with bodies that can hold up to 18 m<sup>3</sup>. Other body options include cranes, mixer units, skip loaders with garbage collector modules, and tankers for water, liquid fertilizer and fuel. For tasks such as delivery, haulage and controlled temperature distribution, the

4x2 Performer tractor, powered by engines up to 440 hp, can be operated at up to 40 tonnes GCW, working with equipment such as semi-trailers or mobile workshops to support on-site maintenance and repair.

Iveco can also offer a range of light goods trucks and vans suited to hauling smaller loads, for efficient and fast movement of produce and other goods between sites and from field to store or market. And also in the range is a line of solutions for staff transport, with a number of bus and minibus models designed for swift and comfortable movement of people.



# WHATEVER THE VEHICLE

## WHEREVER YOU ARE

Once your machines are delivered, you can rest assured that, throughout their lifespan under your ownership, they will be fully backed by the best support network in the business. Case IH, Case and Iveco dealers work to common principles of customer commitment, attention to detail and precision operation in everything they do, from service support to parts supply and the provision of advice on getting the best from your equipment and any accessories fitted to it. Should any of your machines ever experience a problem in the field, fully-trained mobile service engineers are able to attend to them wherever they are working, and can also carry out regular

service and maintenance on-site where necessary or required. All have access to the latest diagnostic service tools, and in the unlikely event the dealership does not hold a particular part in stock, all have instant access to CNH Industrial's worldwide parts system.

Wherever you are, and wherever your machines are, you'll have the backing of CNH Industrial and the teams behind the Case IH, Case Construction Equipment and Iveco brands. It's not just our products that make CNH Industrial what it is – it's the commitment we put behind them.





# BALING

## TOP QUALITY IN EVERY BALE

We know that the completion of harvest doesn't mean that work has come to an end. Case IH recognises the need to move swiftly once the crop has been cut to prepare for the next season. For those looking to clear their fields and gather crop residue as a valuable energy source, Case IH offers a full range of LB4 series square balers that are well-proven in packaging this material in enterprises around the world.

The LB334 produces bales of 80 cm x 90 cm (32 in x 35 in), while the LB 434 creates packages of 120 cm x 90 cm (47 in x 35 in). LB big balers will consistently form tight, solid bales in the harshest of conditions. Different crop cutter knife options allow you to choose to chop material if required, for even denser bales.

### ADVANTAGES

- AFS terminal allows bale density to be adjusted at a standstill or on the move.
- High pickup speeds ensure crop intake is rapid and as little as possible is left behind.
- A new feed rate controller option enables optimum performance of the baler by adapting the speed of the tractor to the swath volume.
- Proven ultra-reliable double knotter system.
- Compressed air cleaning system to ensure reliability by keeping knotters clear of debris in extreme dusty conditions.



In addition to large square balers, Case IH also offers a full range of round balers, in both fixed and variable chamber formats. Case IH RB455 and RB465 variable chamber models can produce respective bale sizes of 0.9-1.5 m and 0.9-1.8 m, to create a package that suits every need, from compact silage bales to full size straw bales. With windows of opportunity often very narrow where crop condition and weather can change quickly in a short space of time, these machines can quickly package large quantities of crop.

RB545 and RB545 Silage Pack fixed chamber round balers produce bales of 1.25 m diameter that are 1.22 m wide. Both incorporate a 20-knife rotor that can be used to pack more material into bales of silage, which these machines are ideally suited to making, with the ability to run half that number of knives or none at all, as required. The RB545 silage Pack is fitted with an integral wrapper, so that the complete silage making process can be carried out in a single pass. In this way, once baled the grass never touches the ground again, ensuring that fodder is instantly preserved and protected.





# MONITOR YOUR PRODUCTIVITY

## THE POWER OF PRECISION

CNH Industrial and its Case IH, Case Construction Equipment and Iveco brands produce products that are at the very leading edge of technology. But this is about more than just the machines themselves. It's about how you can analyse what they and their operators are doing, to ensure you are getting the maximum possible return from your investment. That's where our telematics systems come in. By giving you the ability to see where your vehicles are and what they are doing at any point in time, while also allowing you to monitor their performance, you can tweak systems, routines and methods to ensure that your operation is as productive as possible.

Power is knowledge, and the knowledge that, perhaps, one of your machines is using more fuel than another of the same type, can allow you to examine issues such as driver training and assess whether there is more than a team of operators can learn from each other, in terms of the way they work together or approach a task individually.

You can also ensure your machines are secure, by 'geofencing' them so they do not leave a certain area. And there's plenty more telematics systems can do - read on to discover more.



# SECURITY PLUS PRODUCTIVITY

## CASE CE SITEWATCH



The Case SiteWatch telematics system helps equipment owners make better decisions about how they run their business, revealing new insights into the productivity and efficiency of equipment fleets. The standard telematics modem provides dual band 3G communication, ensuring fast and efficient data communication and update on the user portal. SiteWatch provides real-time analytics to enable data such as engine idle time, fuel levels and machine performance to be tracked, measured and managed. It allows inefficiencies to be addressed and operating costs to be cut. SiteWatch telematics, when connected to the on-machine CAN-bus controller network, monitors up to 40 parameters, providing more machine specific data. Accurate tracking of machine usage and performance is the key to reliable forecasting. SiteWatch makes it simple to get a detailed picture of a fleet's capabilities and minimises manual data entry. Fleets can be protected with features such as machine curfew, geofencing and motion detection – CASE provides one of the only services that tracks machine movement even when the machine is switched off. The new improved modem includes an internal battery backup which improves key-off operation and cellular data communication. SiteWatch also allows machine maintenance needs to be pre-planned. Maintenance history can be recorded, automatic alerts set and reminders sent via text, email or both to owner and dealer.

## ADVANCED FARMING SYSTEMS

Case IH Advanced Farming Systems® (AFS) have been at the forefront of precision farming for two decades, AFS®tools include everything needed for repeatable accuracy down to 2.5 cm, reducing overlaps and input costs – and maximising yield potential. The AFS Pro touch screen provides data on everything from yield monitoring to fuel usage and work rates, allows connection of external cameras, aids job recording and manages ISOBUS implements. Case IH guidance systems range from simple 'plug and play' light bar steering kits through to fully automated and integrated AccuGuide solutions. Accuracy levels range right up to the 2.5 cm repeatability of RTK systems, with an xFill option allowing any signal loss to be 'bridged' for up to 20 minutes.



Many variables apply in farming; the key is to understand what is happening and why. It's time to manage your farming operation on a new level by making decisions based on facts. With the AFS® Farm Management software package from Case IH you can see, field by field, the tasks performed, the work rates achieved, the fuel used during each task and, most importantly, your yield. The Case IH AFS Connect™ telematics system allows monitoring and management of machinery from the farm office, tracking machines in real time on the farm computer to observe how they are performing, through the use of precision guidance GPS signals and wireless data networks. Analysing the data it provides helps to improve logistics, minimise fuel consumption and maximise performance.

## IVECO FLEET MANAGEMENT



Iveco Fleet Management systems allow owners and managers to keep close contact with their vehicle fleets at all times, aiding security, safety and productivity. Large numbers of vehicles can be monitored easily, and efficiencies can be maximised.

Vehicle positions can be monitored, messages relayed between managers and vehicle operators, and data such as driving times and break periods can be recorded, to ensure maximum safety and full productivity. The interaction between driver, vehicle and business office allows a company to gain a quick overview of any vehicles fitted with this system, thus verifying, in real time, driving hours, fuel consumption, GPS position and anticipated travel times. It also allows for the automatic management of legal obligations relating to unloading, management, and storage of tachograph data.

As a fleet owner or manager, this gives you peace of mind that you know exactly where all elements of your vehicle fleet are at any one time, and that everything is as it should be - safe, secure and productive. With Iveco Fleet Management, you can rest assured your vehicles are where they should be, when they should be, and performing as efficiently as possible.



# TRAINING

## MAKE THE MOST OUT OF CNH EQUIPMENT

The Commercial Training program is a strategic and key business asset. Only self-awareness and preparation lead to high business profitability and efficiency. Our bespoke training curriculum combines lectures, held by professional trainers, with practical experiences and „hands on“ elements in order to offer a comprehensive approach.

### FACE TO FACE COURSES

Taking place with the trainer and participant face to face, this hands-on training takes place out of the classroom, combining various exercises with ride-and-drive experience.

### VIRTUAL CLASSROOMS

With the trainer in front of his/her computer, these provide real-time interaction between trainer and participants.





# PARTS & SERVICE

## WE'LL KEEP YOUR EQUIPMENT RUNNING

### SUPPORT THAT'S SECOND TO NONE

When you buy one of our machines, you can be sure not only that you're buying the best product, but also that you've got the best service back-up behind you. We can offer advice on selecting and financing the right machine, will ensure they deliver what you need when you need it, and will then continue to back you and your equipment with the service and spare parts supply you'd expect from a name as trusted as CNH Industrial. It's expertise applied by skilled, factory-trained service professionals committed to providing you maximum uptime, year after year.

### GENUINE PARTS

Best performance and safe operation are our priorities. Behind every CNH Industrial product stands an extensive parts logistics organisation, stocking parts for products both old and new. Knowledgeable service and special training programmes keep your machinery operating at peak performance. By opting for our genuine parts, you are guaranteed superior materials, enhanced safety, perfect fit and our expertise will give you peace of mind.



**CNH Industrial Österreich GmbH**  
**Steyrer Straße 32, A-4300 St. Valentin – Austria**

 Safety never hurts! Always read the Operator's Manual before working with any equipment. Inspect equipment before using it, and be sure it is operating properly. Follow the product safety signs, and use any safety features provided. This literature has been published for worldwide circulation. The standard and optional equipment and the availability of individual models may vary from one country to the next. Case IH reserves the right to undertake modifications without prior notice to the design and technical equipment at all times without this resulting in any obligation whatsoever to make such modifications to units already sold. Whilst every effort is made to ensure that the specifications, descriptions and illustrations in this brochure are correct at the time of going to press, these are also subject to change without prior notice. Illustrations may show optional equipment or may not show all standard equipment. Case IH recommends **AKCELA** lubricants.



**CORPORATE FARMING**