



NEW HOLLAND

AGRICULTURE



NEW HOLLAND

CONSTRUCTION

2015 RETAIL HAND TOOLS



LIFETIME
UNLESS OTHERWISE
REPLACEMENT
ON ALL PRODUCTS
SPECIFIED
WARRANTY



NEW HOLLAND

AGRICULTURE





 **NEW HOLLAND**





New Holland Branded Tools

- Offer a lifetime replacement warranty*
- Are engineered, sourced and priced to provide the very best value
- Will provide great service and pride of ownership for years to come

*Unless otherwise specified

Contents:

Hand Tools

Adjustable Wrenches	19
Bit Set	36
Breaker Bars	28
Hammers	23
Master Tool Kit	4, 5
Pick Set	24
Pliers	22
Pliers (Locking)	23
Pliers (Oil Filter)	20
Pliers (Snap Ring)	23
Prybars & Pinch Bar	26
Punch & Chisel Set	24
Ratchets	28-32, 34-37
Ratchet Bit Set	29
Ratchet (Flex) & Spline Socket Set	29
Service Kit (Field)	37
Service Kit (General)	35
Scrapers	24
Screwdrivers	25
Screwdrivers (Pocket)	42
Sockets (1/4" Drive)	28, 29
Sockets (3/8" Drive)	30
Sockets (1/2" Drive)	32
Sockets (3/4" Drive)	34
Socket Extension Set (3/8" Drive)	30

Hand Tools (Cont.)

Socket Extension Set (1/2" Drive)	33
Tape Measures	40
Torque Wrenches	27
Utility Tool Set	24
Wrenches (Ball Style Hex)	20
Wrenches (Combination)	18
Wrenches (Crowfoot Ratcheting)	20
Wrenches (Oil Filter)	21
Wrenches (Ratcheting) & Adaptors	19

Knives

Multi-Tools	43
-------------------	----

Lighting

Flash Lights	39
--------------------	----

Pneumatic / Power Tools

Blow Guns	39
Die Grinders (Air)	38
Impact Socket Adapter Set	27
Impact Sockets (3/8" Drive, Swivel)	31
Impact Sockets (1/2" Drive)	33
Impact Sockets (1/2" Drive, Swivel)	33
Impact Sockets (3/4" Drive)	34
Impact Wrench (1/2" Drive, Air)	38

Pneumatic / Power Tools (Cont.)

Impact Wrench (3/4" Drive, Air)	38
Master Tool Kit	4, 5
Ratchet Wrench (3/8" Drive, Air)	38

Recreation

Duffel Bag / Laptop Bag	43
-------------------------------	----

Shop & Field Equipment

Creepers & Seat Creepers	17
Locks	42
Tyre Pressure Gauges	41
Utility Tools & Trays (Magnetic)	42

Storage

Master Tool Kit	4, 5
Portable Tool Storage	15, 16
Ready Stock Storage Lockers	13
Roll Carts	14
Tool Storage (Premium, 40")	6, 7
Tool Storage (Premium, 55")	8, 9
Tool Storage (Valueline, 27")	10
Tool Storage (Valueline, 42")	11
Tool Storage (Valueline, 56")	12

Master Tool Kit

Includes all tools on pages 4 & 5

Part No.	Description
SNMK2	Master Tool Kit
SN10002	28-Piece 1/4" Drive Socket Set (SAE)
SN11006	6" Adjustable Wrench
SN11008	8" Adjustable Wrench
SN11010	10" Adjustable Wrench
SN11012	12" Adjustable Wrench
SN11015	15" Adjustable Wrench
SN12001A	7-Piece Hex Wrench Set, Ball Style (SAE)
SN12501A	9-Piece Hex Wrench Set, Ball Style (Metric)
SN13016	Ball Peen Hammer, 16 oz.
SN13020	Claw Hammer, 20 oz.
SN13032	Dead Blow Hammer, 32 oz.
SN13100	8-Piece Punch & Chisel Set
SN16001	4-Piece Pry Bar Set with Handles
SN16030	30" Pinch Bar
SN17050	1/2" Air Impact Wrench
SN18001A	42-Piece Bit Set
SN20002	3/8" Drive Socket Set (SAE and Metric)
SN23005	3/8" Drive Extension Set
SN30001A	1/2" Drive Socket Set (SAE)
SN30501A	1/2" Drive Socket Set (Metric)
SN31001	1/2" Drive Impact Socket Set (SAE)
SN31501	1/2" Drive Impact Socket Set (Metric)
SN32001A	1/2" Drive, 6 pt. Deep Socket Set (SAE)
SN32501A	1/2" Drive, 6 pt. Deep Socket Set (Metric)
SN33003	1/2" Drive Extension Set
SN40001	21-Piece 3/4" Drive Socket Set (SAE)
SN40501	13-Piece 3/4" Drive Socket Set (Metric)
SN60001	Combination Wrench Set (SAE)
SN60006	7-Piece Large Combination Wrench Set (SAE)
SN60501	Combination Wrench Set (Metric)
SN60506	7-Piece Large Combination Wrench Set (Metric)
SN70001	Ratcheting Combination Wrench Set (SAE)
SN70501	Ratcheting Combination Wrench Set (Metric)
SN80001	5-Piece Screwdriver Set
SN80005	Ratcheting Magnetic Screwdriver
SN80520	4-Piece Utility Tool Set
SN90408	8-Piece Pliers Set
SN90503	3-Piece Long Reach Pliers Set
SN90004	4-Piece Snap Ring Pliers Set
SN90005	5-Piece Locking Pliers Set

Optional Storage for Master Tool Kit

Part No.	Description
SNMK2NA	Master Tool Kit w/ SN4000NA New Holland Box (Blue)
SNMK2NAB	Master Tool Kit w/ SN4000NAB New Holland Box (Black)
SNMK2NC	Master Tool Kit w/ SN4000NC New Holland Construction Box (Black)

See pages 6 and 7 for more information on SN4000 storage units.





Tool Storage – Premium 40"

- Made of high-quality steel to enhance strength and finish
- Double-wall construction with 3-4" spot weld spacing
- Reinforced corner gussets add strength & reduce racking
- Full-length drawer pulls with positive drawer latching prevent unwanted drawer opening
- All drawers equipped with 100-lb. full extension ball bearing slides with quick disconnect
- Rolled hem on all edges for superior strength, rigidity, and safety
- High-performance, 5" x 2" casters absorb vibrations transmitted to frame while moving on uneven surfaces
- Swivel casters equipped with braking system
- High-luster paint protects against scratches, peeling, blistering and corrosion
- Paint pretreatment process sprays and immerses boxes for added corrosion protection
- Rubber work mat and drawer liners protect cabinet and preserve appearance
- Gas springs in lid of chest make lid easy to open and close
- Two-point locking design adds extra security on all chests
- Lifetime warranty on all slides, locks and other serviceable parts

40" Top Chest, 4-Drawer

Capacity	Width	Depth	Height
9,746 cu. in.	40-1/32"	19-13/16"	19-7/16"
Drawer sizes			
Top Compartment	39-29/32"	18-23/32"	4-23/32"
2 Drawers	34-11/16"	17-17/32"	1-13/32"
2 Drawers	34-11/16"	17-17/32"	3-19/32"

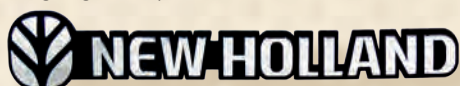
40" Roll Cabinet, 7-Drawer

Capacity	Width	Depth	Height
15,253 cu. in.	40"	19-13/16"	37-7/8"
Drawer sizes			
2 Drawers	34-11/16"	17-23/32"	1-13/32"
4 Drawers	34-11/16"	17-23/32"	3-19/32"
1 Drawer	34-11/16"	17-23/32"	7-21/32"

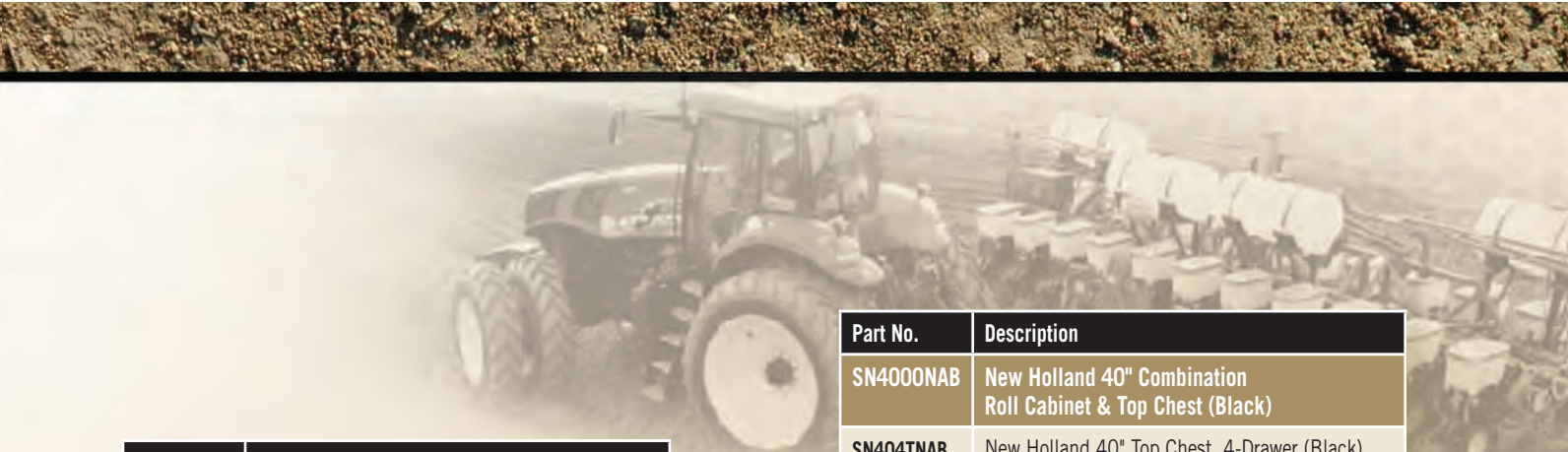
Part No.	Description
SN4000NC	New Holland Construction 40" Combination Roll Cabinet & Top Chest (Black)
SN404TNC	New Holland Construction 40" Top Chest, 4-Drawer (Black)
SN407RNC	New Holland Construction 40" Roll Cabinet, 7-Drawer (Black)



Premium line features raised chrome badge logos on top chest and roll cab.



Part No. SN4000NC



Part No.	Description
SN4000NA	New Holland 40" Combination Roll Cabinet & Top Chest (Blue)
SN404TNA	New Holland 40" Top Chest, 4-Drawer (Blue)
SN407RNA	New Holland 40" Roll Cabinet, 7-Drawer (Blue)

Part No.	Description
SN4000NAB	New Holland 40" Combination Roll Cabinet & Top Chest (Black)
SN404TNAB	New Holland 40" Top Chest, 4-Drawer (Black)
SN407RNAB	New Holland 40" Roll Cabinet, 7-Drawer (Black)



Part No. SN4000NA



Part No. SN4000NAB

Tool Storage – Premium 55"

55" Top Chest, 10-Drawer

Capacity	Width	Depth	Height
21,283 cu. in.	55"	24"	28-5/8"
Drawer sizes			
2 Drawers (Left)	14-5/8"	21-7/8"	1-11/16"
3 Drawers (Left)	14-5/8"	21-7/8"	4"
2 Drawers (Right)	30-1/2"	21-7/8"	1-11/16"
3 Drawers (Right)	30-1/2"	21-7/8"	4"

55" Roll Cabinet, 11-Drawer

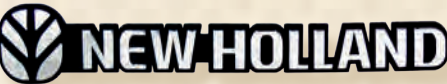
Capacity	Width	Depth	Height
25,000 cu. in.	55"	24"	39"
Drawer sizes			
1 Drawer	49-1/8"	21-7/8"	3-13/16"
1 Drawer (Left)	14-5/8"	21-7/8"	1-3/4"
2 Drawers (Left)	14-5/8"	21-7/8"	4"
1 Drawer (Left)	14-5/8"	21-7/8"	10-9/16"
3 Drawers (Right)	30-1/2"	21-7/8"	1-3/4"
2 Drawer (Right)	30-1/2"	21-7/8"	4"
1 Drawer (Right)	30-1/2"	21-7/8"	6-3/16"

Part No.	Description
SN5000NC	New Holland Construction 55" Combination Roll Cabinet & Top Chest (Black)
SN5510TNC	New Holland Construction 55" Top Chest, 10-Drawer (Black)
SN5511RNC	New Holland Construction 55" Roll Cabinet, 11-Drawer (Black)

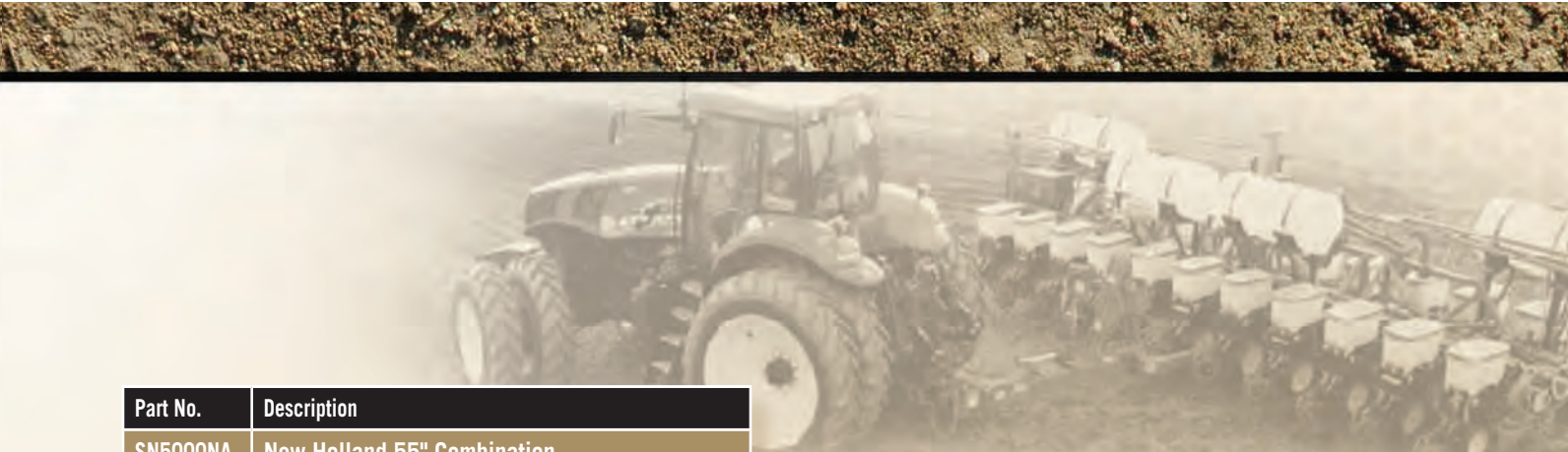
- Lifetime warranty on all slides, locks and other serviceable parts



Premium line features raised chrome badge logos on top chest and roll cab.



Part No. SN5000NC



Part No.	Description
SN5000NA	New Holland 55" Combination Roll Cabinet & Top Chest (Black)
SN5510TNA	New Holland 55" Top Chest, 10-Drawer (Blue)
SN5511RNA	New Holland 55" Roll Cabinet, 11-Drawer (Blue)

- Lifetime warranty on all slides, locks and other serviceable parts



Part No. SN5000NA

55" Top Chest, 10-Drawer

Capacity	Width	Depth	Height
21,283 cu. in.	55"	24"	28-5/8"
Drawer sizes			
2 Drawers (Left)	14-5/8"	21-7/8"	1-11/16"
3 Drawers (Left)	14-5/8"	21-7/8"	4"
2 Drawers (Right)	30-1/2"	21-7/8"	1-11/16"
3 Drawers (Right)	30-1/2"	21-7/8"	4"

55" Roll Cabinet, 11-Drawer

Capacity	Width	Depth	Height
25,000 cu. in.	55"	24"	39"
Drawer sizes			
1 Drawer	49-1/8"	21-7/8"	3-13/16"
1 Drawer (Left)	14-5/8"	21-7/8"	1-3/4"
2 Drawers (Left)	14-5/8"	21-7/8"	4"
1 Drawer (Left)	14-5/8"	21-7/8"	10-9/16"
3 Drawers (Right)	30-1/2"	21-7/8"	1-3/4"
2 Drawer (Right)	30-1/2"	21-7/8"	4"
1 Drawer (Right)	30-1/2"	21-7/8"	6-3/16"

Tool Storage – Valueline 27"

- Heavy-duty, double-wall construction for added strength
- Quadra-level, full-extension ball bearing slides for easy tool access
- High-gloss, powder-coat, scratch-resistant finish
- Non-slip drawer liners
- Stronghold drawer detents
- Heavy-duty, 5" x 2" casters on 14-gauge caster rails
- Manufacturer's limited warranty

Part No.	Description
SN2713NA	New Holland 27" Combination Roll Cabinet & Top Chest (Blue)
SN2713NC	New Holland Construction 27" Combination Roll Cabinet & Top Chest (Black)

27" Top Chest, 6-Drawer

Capacity	Width	Depth	Height
5,994 cu. in.	26"	17-7/8"	18-5/16"
Drawer sizes			
6 Drawers	23"	16"	2"

27" Roll Cabinet, 7-Drawer

Capacity	Width	Depth	Height
9,604 cu. in.	27"	18-3/4"	35-5/8"
Drawer sizes			
4 Drawers	23"	16"	2"
2 Drawers	23"	16"	4-1/4"



Part No. SN2713NC



Part No. SN2713NA

Tool Storage – Valueline 42"

Part No.	Description
SN4221NA	New Holland 42" Tool Storage Combination (Blue)
SN4221NC	New Holland Construction 42" Tool Storage Combination (Black)

42" Top Chest, 10-Drawer

Capacity	Width	Depth	Height
6,457.5 cu. in.	40-1/2"	17-7/8"	18-3/8"
Drawer sizes			
3 Drawers (Left)	23"	16"	2"
2 Drawers (Left)	23"	16"	3-3/32"
3 Drawers (Right)	11"	16"	2"
2 Drawers (Right)	11"	16"	3-3/32"

42" Roll Cabinet, 11-Drawer

Capacity	Width	Depth	Height
12,328.6 cu. in.	41-1/2"	18-3/4"	38-3/16"
Drawer sizes			
1 Drawer	38"	16"	4-3/16"
1 Drawer (Left)	23"	16"	2"
4 Drawers (Left)	23"	16"	3-3/32"
1 Drawer (Left)	23"	16"	4-3/16"
2 Drawers (Right)	11"	16"	3-3/32"
1 Drawer (Right)	11"	16"	4-3/16"
1 Drawer (Right)	11"	16"	8-5/8"



Part No. SN4221NC



Part No. SN4221NA

Tool Storage – Valueline 56"

- Heavy-duty, double-wall construction for added strength
- Quadra-level, full-extension ball bearing slides for easy tool access
- High-gloss, powder-coat, scratch-resistant finish
- Non-slip drawer liners
- Stronghold drawer detents
- Heavy-duty, 5" x 2" casters on 14-gauge caster rails
- Manufacturer's limited warranty

56" Top Chest, 6-Drawer

Capacity	Width	Depth	Height
11,341 cu. in.	55-1/2"	24"	19-1/10"
Drawer sizes			
2 Drawers (Left)	33-5/8"	22"	1-11/32"
2 Drawers (Left)	33-5/8"	22"	3-1/2"
1 Drawer (Right)	16-1/2"	22"	3-1/2"
1 Drawer (Right)	16-1/2"	22"	8"

56" Roll Cabinet, 10-Drawer

Capacity	Width	Depth	Height
25,180 cu. in.	56-1/2"	24"	39-1/2"
Drawer sizes			
1 Drawer	51-7/8"	22"	4-3/16"
2 Drawers (Left)	33-5/8"	22"	3-3/32"
3 Drawers (Left)	33-5/8"	22"	4-3/16"
3 Drawers (Right)	16-1/2"	22"	2"
1 Drawer (Right)	16-1/2"	22"	12"

Part No.	Description
SN5616NA	New Holland 56" Tool Storage Combination (Blue)
SN5606NA	New Holland 56" Top Chest, 6-Drawer (Blue)
SN5610NA	New Holland 56" Roll Cabinet, 10-Drawer (Blue)



Part No. SN5616NA

Ready Stock Parts Supply Lockers

THE PARTS YOU NEED, RIGHT AT HAND.

The Ready Stock™ Parts Supply Locker program enables you to have parts stocked at your place of business.

Part No. SN4672NA



HOW DO I PARTICIPATE IN THE READY STOCK PARTS SUPPLY PROGRAM?

1. Contact your dealer to order a Ready Stock Parts Supply Locker.
2. Your dealer will work with you on your customizable parts list.
3. Your dealer will manage and restock inventory for you on an agreed upon schedule.

* See your local New Holland or New Holland Construction dealer for details and qualification. Pricing and qualification for the Ready Stock Parts Supply Locker program are subject to your individual New Holland or New Holland Construction dealer.

Part No.	Description
SN4672NA	New Holland 46"W x 23"D x 70"H (Blue)
SN4672NC	New Holland Construction 46"W x 23"D x 70"H (Black)
SN4672NA1	Ready Stock Locker Shelves, (Blue)
SC4672CE1	Ready Stock Locker Shelves, (Black)

- Manufacturer's limited warranty

WHY IS READY STOCK RIGHT FOR YOUR BUSINESS?

Convenience

- Parts are conveniently available when you need them, saving you time and money
- Save yourself the trip – your dealer comes to you

Cost Savings

- No up-front cost – the locker and parts management are free at participating dealerships*
- Pay only for the parts you use

Inventory Management

- Parts are stocked by your dealer and customized to your specific needs
- Eliminates obsolete inventory – parts are updated regularly



Part No. SN4672NC

Roll Carts

- Shelves feature rolled edges for improved strength and rigidity
- Shelves measure 30" long x 17" wide x 3" deep
- Welded post holders
- Casters are 4" x 1-1/8" (two locking, two standard)

Part No.	Description
SN2RCNA	New Holland Roll Cart, 2-Shelf (Blue)
SN74RCNA	New Holland Roll Cart, 4-Drawer (Blue)
SN31RCNA	New Holland Roll Cart, 2-Shelf and 1-Drawer (Blue)

Part No.	Description
SN2RCNC	New Holland Roll Cart, 2-Shelf (Black)
SN74RCNC	New Holland Roll Cart, 4-Drawer (Black)
SN31RCNC	New Holland Roll Cart, 2-Shelf and 1-Drawer (Black)



Part No. SN31RCNC

Part No. SN2RCNC

Part No. SN74RCNA



Roll carts feature raised chrome badge logos.

20" Hand Tool Box, 3-Drawer

- Ball Bearing Drawer Slides
- Heavy duty latches and carrying handle provide security and portability
- Unique design makes this tool box a collectible
- Tough enough for everyday use
- Manufacturer's limited warranty

Part No.	Description
SN2003NA	New Holland 20" Hand Tool Box, 3-Drawer



Part No. SN2003NA

48" Job Site Tool Box

- Heavy gauge steel with powder coated finish
- Four way entry skid for easy handling
- Recessed locking area protects contents
- Reinforced overlapping lid provides protection from weather
- 48-1/8"W x 24-1/8"D x 28-3/8"H
- Manufacturer's limited warranty

Part No.	Description
SN4824NA	New Holland Job Site Box
SN4824NC	New Holland Construction Job Site Box



Part No. SN4824NC



Part No. SN4824NA

Tool Tote Bags

- Manufacturer's limited warranty

Part No.	Description
SN50001	Utility Tote Bag
SN50002	Tool Tote with Metal Handle



Part No. SN50001



Part No. SN50002

Hand Tool Box

- Manufacturer's limited warranty

Part No.	Description
SN5003	New Holland 19" Hand Tool Box



Part No. SN5003

18" Cantilever Hand Tool Box

- Split top opening design for tool access
- Cantilever trays fold out on either side for organization of tools or parts
- Heavy duty latches and carrying handle provide security and portability
- Manufacturer's limited warranty

Part No.	Description
SN1804NA	New Holland 18" Cantilever Hand Tool Box (Blue)



Part No. SN1804NA



Creepers

- Overall size: 40"L x 17"W x 4"H
- Attractive custom graphics
- 16-gauge 3/4" square steel frame rails
- (6) 2-1/2" heavy-duty casters
- 2-3/4"-thick headrest and 1-3/4"-thick bed made with high-density foam for comfort and plywood backing for strength
- Low 3/4" ground clearance
- Made in USA

Part No.	Description
SN43001NA	New Holland 6-Wheel, Heavy-Duty Creeper
SN43001NC	New Holland Construction 6-Wheel, Heavy-Duty Creeper

Seat Creepers

- Overall size: 14"L X 19"W X 15"H
- Attractive custom brand logos
- 16-gauge 1" steel frame rails
- High-density foam seat with plywood backing
- 2-1/2" heavy-duty ball bearing casters
- Plastic bottom tray for parts and tool control
- Made in USA

Part No.	Description
SN43501NA	New Holland Heavy-Duty Creeper Seat
SN43501NC	New Holland Construction Heavy-Duty Creeper Seat



Part No. SN43001NA

Part No. SN43001NC



Part No. SN43501NA



Part No. SN43501NC



Part No. SN60001

Large Combination Wrench Sets

- Highly-polished chrome for appearance and durability
- Long-pattern handle for extra leverage
- Made from high-grade chrome vanadium steel
- Hardened for ultimate strength and durability
- Lifetime replacement warranty
- Wrenches featured in SN60006 and SN60506 are also available individually

Part No.	Size SAE
SN60006 7-Piece Wrench Set	
SN60034	1-1/16"
SN60036	1-1/8"
SN60040	1-1/4"
SN60042	1-5/16"
SN60044	1-3/8"
SN60046	1-7/16"
SN60048	1-1/2"

Part No.	Size Metric
SN60506 7-Piece Wrench Set	
SN60520	20 mm
SN60521	21 mm
SN60522	22 mm
SN60523	23 mm
SN60524	24 mm
SN60527	27 mm
SN60530	30 mm

Additional sizes available:

Part No.	Size SAE
SN60052	1-5/8"
SN60054	1-11/16"
SN60056	1-3/4"
SN60058	1-13/16"
SN60060	1-7/8"
SN60064	2"

Part No.	Size Metric
SN60525	25 mm
SN60526	26 mm
SN60528	28 mm
SN60529	29 mm
SN60532	32 mm
SN60534	34 mm
SN60536	36 mm

Combination Wrench Sets

- Highly polished and chrome plated for lasting strength, durability and appearance
- A large variety of wrenches are offered to take care of most common tasks
- Wrenches featured in SN60001 and SN60501 are also available individually

Part No.	Size SAE
SN60001 11-Piece Wrench Set	
SN60012	3/8"
SN60014	7/16"
SN60016	1/2"
SN60018	9/16"
SN60020	5/8"
SN60022	11/16"
SN60024	3/4"
SN60026	13/16"
SN60028	7/8"
SN60030	15/16"
SN60032	1"

Part No.	Size Metric
SN60501 10-Piece Wrench Set	
SN60510	10 mm
SN60511	11 mm
SN60512	12 mm
SN60513	13 mm
SN60514	14 mm
SN60515	15 mm
SN60516	16 mm
SN60517	17 mm
SN60518	18 mm
SN60519	19 mm

Additional sizes available:

Part No.	Size SAE
SN60008	1/4"
SN60010	5/16"

Part No.	Size Metric
SN60508	8 mm
SN60509	9 mm



Part No. SN60006

Part No. SN60506

Ratcheting Box Combination Wrenches

- 15-degree offset on box end provides knuckle clearance
- Nickel-chrome finish for durability
- Dual-pawl ratcheting box end provides smooth operation and maximum strength
- Lifetime replacement warranty

Part No.	Size SAE
SN70001	8-Piece Wrench Set
SN70010	5/16"
SN70012	3/8"
SN70014	7/16"
SN70016	1/2"
SN70018	9/16"
SN70020	5/8"
SN70022	11/16"
SN70024	3/4"

Part No.	Size Metric
SN70501	8-Piece Wrench Set
SN70510	10 mm
SN70511	11 mm
SN70512	12 mm
SN70513	13 mm
SN70514	14 mm
SN70515	15 mm
SN70516	16 mm
SN70517	17 mm



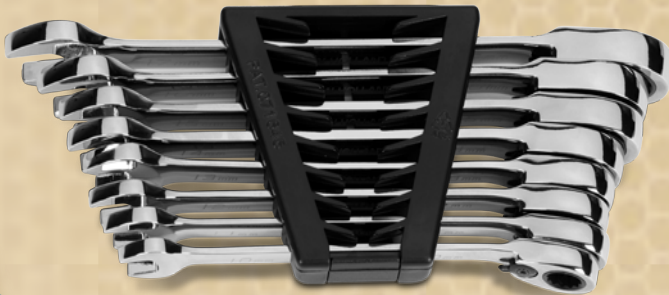
Part No. SN70001

Ratcheting Wrench Adaptors

Part No.	Size Metric
SN80550	4-Piece Ratcheting Wrench Adaptor Set
SN80551	13 mm H x 1/4" Female Coupler
SN80552	13 mm H x 1/4" Male Adaptor
SN80553	16 mm H x 3/8" Male Adaptor
SN80554	19 mm H x 1/2" Male Adaptor



Part No. SN80550



Part No. SN70501

Adjustable Wrenches

- Made from high-grade chrome vanadium steel
- Includes fractional markings on wrench opening for size reference
- Hardened for ultimate strength and durability
- Lifetime replacement warranty

Part No.	Size SAE
SNAWK5	5-Piece Adjustable Wrench Kit
SN11006	6"
SN11008	8"
SN11010	10"
SN11012	12"
SN11015	15"



Part No. SNAWK5

Crowfoot Ratcheting Wrenches

- Made from high-grade chrome vanadium steel
- Nickel-chrome finish for durability
- Dual-pawl ratcheting box end provides smooth operation and maximum strength
- Lifetime replacement warranty

Part No.	Size Metric
SN24501	11-Piece 3/8" Drive Wrench Set
SN24510	10 mm
SN24511	11 mm
SN24512	12 mm
SN24513	13 mm
SN24514	14 mm
SN24515	15 mm
SN24516	16 mm
SN24517	17 mm
SN24518	18 mm
SN24519	19 mm
SN20211	Locking Ext. Bar

Part No.	Size SAE
SN24001	9-Piece 3/8" Drive Wrench Set
SN24010	5/16"
SN24012	3/8"
SN24014	7/16"
SN24016	1/2"
SN24018	9/16"
SN24020	5/8"
SN24022	11/16"
SN24024	3/4"
SN20211	Locking Ext. Bar



Part No. SN24501

Hex (Ball Style)

Part No.	Description
SN12001A	13 Pieces, .05"-3/8" (SAE)
SN12501A	9 Pieces, 1.5 mm-10 mm (Metric)

Part No. SN12001A

Part No. SN12501A



Also Available:

Part No.	Description
SN24508	8 mm
SN24509	9 mm
SN80550	4-Piece Ratcheting Wrench Adaptors



Part No. SN82006

Part No. SN82008

Oil Filter Pliers

Part No.	Description
SN82006	2-1/4" - 4" Oil Filter Pliers
SN82008	4-1/4" - 7" Oil Filter Pliers
SN82009	4-1/4" - 7" Oil Filter Pliers



Part No. SN82009

Oil Filter Wrench Set

Part No.	Description
SN82007	7-Piece Oil Filter Wrench Set
SN82001	Adjustable Oil Filter Wrench, 62–121 mm
SN820071	Oil Filter Wrench 65/67 mm 2 Step / 14 Flats
SN820072	Oil Filter Wrench 75/77 mm 2 Step / 15 Flats
SN820073	Oil Filter Wrench 76 mm 1 Step / 14 Flats
SN820074	Oil Filter Wrench 76 mm 1 Step / 30 Flats
SN820075	Oil Filter Wrench 80 mm 1 Step / 15 Flats
SN820076	Oil Filter Wrench 93 mm 1 Step / 15 Flats



Oil Filter Wrenches

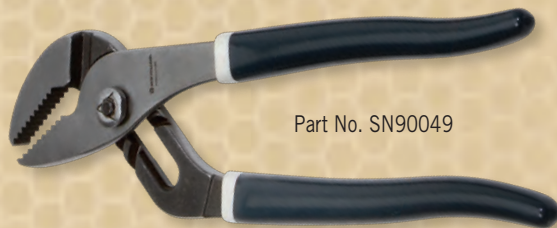
Part No.	Description
SN82002	Oil Filter Wrench, Band w/ Handles (2-7/8"–3-1/4" filter diameter)
SN82003	Oil Filter Wrench, Band w/ Handles (3-1/2"–3-7/8" filter diameter)
SN82004	Oil Filter Wrench, Band w/ Handles (4-1/8"–4-7/16" filter diameter)
SN82005	Oil Filter Wrench, Band, 1/2" sq. dr. (4-1/8"–4-21/32" filter diameter)
SN11000	Oil Filter Strap Wrench



Industrial-Grade Pliers Set

- Grips are double-dipped, offering increased comfort and control during use
- Chrome-nickel finish prevents against rust and corrosion
- Cushioned grips offer comfort during extended use
- Vinyl grips provide easy clean up and durability
- All pliers exceed ANSI standards backed by a lifetime warranty

Part No.	Description
SN90408	8-Piece Pliers & Cutters Set
SN90413	8" Long Needle Nose Pliers
SN90412	8" Slip Joint Pliers
SN90418	8-1/8" Diagonal Cutter
SN90417	6-1/2" Diagonal Cutter
SN90414	7-3/4" 45° Bent Needle Nose Pliers
SN90415	7-1/2" Lineman's Pliers
SN90416	7" End Cutter
SN90411	10" Adjustable Joint Pliers



Part No. SN90049



Part No. SN90408

Adjustable Joint Pliers

Part No.	Description
SN90049	9-1/2" Adjustable Joint Pliers



Part No. SN90503

3-Piece Pliers Set

- Quality chrome vanadium to ensure years of service
- Heat-treated for strength and durability
- Popular sizes for technicians and occasional users

Part No.	Description
SN90001	3-Piece Pliers Set
SN90413	8" Long Needle Nose Pliers
SN90412	8" Slip Joint Pliers
SN90418	8-1/8" Diagonal Cutter



Part No. SN90001

Long Reach Pliers Set

Part No.	Description
SN90503	3-Piece Long-Reach Pliers & Cutters Set
SN90511	11" Diagonal Cutter
SN90512	11" 45° Bent Needle Nose Pliers
SN90513	11" Needle Nose Pliers

Locking Pliers

- E-coat provides extra resistance against corrosion and welding spatter
- Quality, cold-rolled steel ensures years of service
- Drop-forged jaws ensure a tough, durable tool
- Smooth, rounded edges allow comfortable handling and reduce risk of injury
- Spring-loaded release lever permits quick “NO PINCH” release even when tool is firmly locked

Part No.	Description
SN90005	5-Piece Locking Pliers Set
SN90301	5" Straight Jaw
SN90302	10" Straight Jaw
SN90303	7" Curved Jaw
SN90304	10" Curved Jaw
SN90305	Hose Clamp Pliers



Part No. SN90005

Snap Ring Pliers

Part No.	Description
SN90004	4-Piece Snap Ring Pliers Set
SN90201	.038" Tip Diameter / 18° Tip Angle
SN90202	.070" Tip Diameter / 18° Tip Angle
SN90203	.038" Tip Diameter / 90° Tip Angle
SN90204	.070" Tip Diameter / 90° Tip Angle



Part No. SN90004



Part No. SN13016



Part No. SN13020



Part No. SN13056



Part No. SN13032

Hammers

Part No.	Description
SN13016	Ball Peen Hammer – 16 oz.
SN13020	Claw Hammer
SN13056	Dead Blow Hammer – 56 oz.
SN13032	Dead Blow Hammer – 32 oz.

Punch & Chisel Set

Part No.	Description
SN13100	8-Piece Punch & Chisel Set
SN13101	1/8" Pin Punch
SN13102	3/16" Pin Punch
SN13103	1/4" Pin Punch
SN13104	5/32" Solid Punch
SN13105	3/8" Center Punch
SN13106	5/16" Cold Chisel
SN13107	1/2" Cold Chisel
SN13108	3/4" Cold Chisel



Scrapers

Part No.	Description
SN80526	Mini Razor Scraper
SN80525	1-1/4" Stainless Steel Scraper

4-Piece Pick Set

- Perfect for scribing, aligning, o-ring and seal removal and installation, cleaning grooves and threads

Part No.	Description
SN81004	4-Piece Pick Set
	Hook
	90° Pick
	Straight Awl
	45° Pick



4-Piece Utility Tool Set

Part No.	Description
SN80520	4-Piece Utility Tool Set
SN80521	Scraper
SN80522	Scratch Awl
SN80523	Cotter Pin Puller
SN80524	Radiator Hose Remover



Screwdrivers

- Feature chrome vanadium steel blades for extra strength
- Bi-Mold comfort grip handles provide comfort and durability

Part No.	Description
SN80001	5-Piece Set (SAE)
SN80006	5/16" x 6", Slotted Blade
SN80004	1/4" x 4", Slotted Blade
SN80002	3/16" x 3", Slotted Blade
SN80042	#2 x 4", Phillips
SN80031	#1 x 3", Phillips

Part No.	Description
SN80007	3/8" x 8", Slotted Blade (SAE)
SN80010	3/8" x 10", Slotted Blade (SAE)



Part No. SN80001



Part No. SN80007



Part No. SN80010

Magnetic Tip Ratcheting Screwdriver

- Includes 3/16" and 9/32" flat tip bits, #1 and #2 Phillips® ACR® bits plus T15 TORX® bit

Part No.	Description
SN80005	Magnetic Tip Ratcheting Screwdriver (Dual Branded)



Part No. SN80005

6-in-1 Interchangeable Screwdriver

- Includes one 5/16" x 1/4" nut driver, one 5/16" slotted x #2 Phillips® bit and one 1/4" x #1 Phillips® bit

Part No.	Description
SN80061	6-in-1 Interchangeable Screwdriver



Part No. SN80061

Multi-position Prybar Set

- Each prybar features 17 incremental angles of 15° to provide great flexibility

Part No. SN16201

Part No.	Description
SN16201	3-Piece Prybar Set
SN16228	28" Prybar
SN16224	23.5" Prybar
SN16215	15" Prybar



Prybars with Handles

- Bi-Mold comfort grip handles offer comfortable grip and high-leverage potential.

Part No.	Description
SN16001	4-Piece Pry Bar Set with Handles
SN16008	8" Pry Bar with 7/16" Tip Width
SN16012	12" Pry Bar with 5/8" Tip Width
SN16018	18" Pry Bar with 23/32" Tip Width
SN16024	24" Pry Bar with 13/16" Tip Width



Part No. SN16001

30" Pinch Bar

Part No.	Description
SN16030	30" Long Pinch Bar



Part No. SN16030



Part No. SN16100

Large Prybar Set

Part No.	Description
SN16100	4-Piece Large Pry Bar Set with Display Rack
SN16136	36" Heavy-Duty Pry Bar with Striking Cap
SN16142	42" Heavy-Duty Pry Bar with Striking Cap
SN16148	48" Heavy-Duty Pry Bar with Striking Cap
SN16158	58" Heavy-Duty Pry Bar with Striking Cap



Click Type Torque Wrenches

- Dual scale, calibrated dual direction
- Positive lock with spring-loaded pull-down lock ring
- Fast, accurate, and easy to set
- Easy-to-read laser marked scales
- Accuracy + 4% clockwise, + 6% CCW of indicated value, from 20% to 100% of full scale
- Made in USA
- One-year limited warranty

1/2" Drive Torque Wrench

- 30–250 ft. lb. (47–332 Nm)
- OAL: 24.4" (619.76 mm)
- Weight: 3.15 lbs. (1.42 kgs)

Part No.	Description
SN39250	1/2" Drive Click-Type Torque Wrench



Part No. SN39250

3/8" Drive Torque Wrench

- 10–100 ft. lb. (16.9–132.2 Nm)
- OAL: 16" (406.4 mm)
- Weight: 2.55 lbs. (1.13 kgs)

Part No.	Description
SN29100	3/8" Drive Click-Type Torque Wrench



Part No. SN29100

3/4" Drive Torque Wrench

- 100–600 ft. lb. (135.7–814.2 Nm)
- OAL: 45" (1,092.2 mm)
- Weight: 16.04 lbs. (7.28 kgs)
- Includes blow molded case

Part No.	Description
SN34600	3/4" Drive Click-Type Torque Wrench



Part No. SN34600

Impact Adapter Set

Part No.	Description
SN80600	6-Piece Impact Adapter Set
SN81438I	1/4" Female x 3/8" Male Impact Adaptor
SN83814I	3/8" Female x 1/4" Male Impact Adaptor
SN83812I	3/8" Female x 1/2" Male Impact Adaptor
SN81238I	1/2" Female x 3/8" Male Impact Adaptor
SN81234I	1/2" Female x 3/4" Male Impact Adaptor
SN83412I	3/4" Female x 1/2" Male Impact Adaptor



Part No. SN80600



1/4" Drive Deep 6 Point Sockets

Part No.	Size SAE
SN14001	10-Piece Set
SN14006	3/16"
SN14007	7/32"
SN14008	1/4"
SN14009	9/32"
SN14010	5/16"
SN14011	11/32"
SN14012	3/8"
SN14014	7/16"
SN14016	1/2"
SN14018	9/16"

Part No.	Size Metric
SN14501	12-Piece Set
SN14504	4 mm
SN14505	5 mm
SN14555	5.5 mm
SN14506	6 mm
SN14507	7 mm
SN14508	8 mm
SN14509	9 mm
SN14510	10 mm
SN14511	11 mm
SN14512	12 mm
SN14513	13 mm
SN14514	14 mm



Part No. SN14001



Part No. SN14501



Part No. SN10002

1/4" Master Socket Set

Part No.	Description
SN10002	1/4" Socket Master Set (In Rugged New Holland Case; includes the following 3 sets)
SN10001	28-Piece 1/4" Drive Socket Set (SAE & Metric)
SN14001	10-Piece 1/4" Drive Deep Well Socket Set (SAE)
SN14501	12-Piece 1/4" Drive Deep Well Socket Set (Metric)

Breaker Bars

Part No.	Size SAE
SN91321	3-Piece Breaker Bar Set
SN10106	1/4" Cr. Breaker Bar 6"
SN20110	3/8" Cr. Breaker Bar 10"
SN30115	1/2" Cr. Breaker Bar 15"



Part No. SN91321

Flex Ratchets

Part No.	Size SAE
SN90321	3-Piece Flex Quick Release Ratchet Set
SN10201	1/4"
SN20201	3/8"
SN30201	1/2"



Part No. SN90321

Flex Ratchet & Spline Socket Set

- Super-small flexible ratchet head design provides access to difficult-to-reach areas
- Durable socket set for a wide array of jobs
- Includes 1/4" socket and coupler adaptors and 9-piece bit set
- Lifetime warranty on ratchet
- Manufacturing and material defects warranty on all bits and sockets

Part No.	Size SAE
SN10042	24-Piece Flex Ratchet & Spline Socket Set

Ratchet Bit Set

- 39 high-quality S2 steel bits to cover a wide range of applications
- Ratchet designed to provide access to difficult-to-reach areas
- Lifetime warranty on ratchet
- Manufacturing and material defects warranty on all bits and sockets

Part No.	Size SAE
SN10041	39-Piece Ratchet Bit Set

1/4" Drive 6 Point Sockets

- Highly-polished chrome for appearance and durability
- Cold-formed alloy
- Hardened for ultimate strength and durability

Part No.	Description
SN10001	28-Piece Set

Part No.	Size SAE
SN10200	1/4" Pearhead Ratchet
SN10215	1-1/2" Extension
SN10206	6" Extension
SN10208	Universal Joint
SN10209	Spinner Handle
SN10005	5/32"
SN10006	3/16"
SN10007	7/32"
SN10008	1/4"
SN10009	9/32"
SN10010	5/16"
SN10011	11/32"
SN10012	3/8"
SN10014	7/16"
SN10016	1/2"
SN10018	9/16"

Part No.	Size Metric
SN10504	4 mm
SN10505	5 mm
SN10555	5.5 mm
SN10506	6 mm
SN10507	7 mm
SN10508	8 mm
SN10509	9 mm
SN10510	10 mm
SN10511	11 mm
SN10512	12 mm
SN10513	13 mm
SN10514	14 mm

Part No. SN10042



Part No. SN10041



Part No. SN10001

3/8" Drive Deep 6 Point Sockets

- Highly-polished chrome for appearance and durability
- Made from high-grade chrome vanadium steel
- Hardened for ultimate strength and durability

Part No.	Size SAE	Part No.	Size Metric
SN22001	11-Piece Socket Set	SN22501	10-Piece Socket Set
SN22012	3/8"	SN22510	10 mm
SN22014	7/16"	SN22511	11 mm
SN22016	1/2"	SN22512	12 mm
SN22018	9/16"	SN22513	13 mm
SN22020	5/8"	SN22514	14 mm
SN22022	11/16"	SN22515	15 mm
SN22024	3/4"	SN22516	16 mm
SN22026	13/16"	SN22517	17 mm
SN22028	7/8"	SN22518	18 mm
SN22030	15/16"	SN22519	19 mm
SN22032	1"		



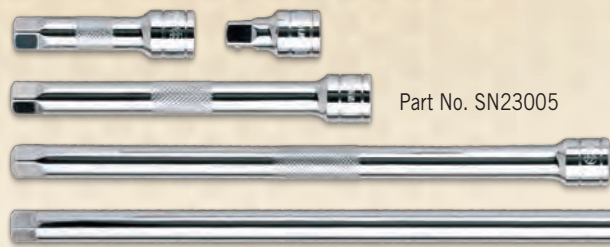
Part No. SN22001



Part No. SN22501

3/8" Drive Extension Set

Part No.	Size SAE
SN23005	5-Piece Extension Set
SN20202	1-1/2"
SN20203	3"
SN20206	6"
SN20210	11"
SN20218	18"



Part No. SN23005

3/8" Master Socket Set

Part No.	Description
SN20002	3/8" Socket Master Set (In Rugged New Holland Case; includes the following 4 sets)
SN20001	16-Piece 3/8" Drive Socket Set (SAE)
SN20501	12-Piece 3/8" Drive Socket Set (Metric)
SN22001	11-Piece 3/8" Drive Deep Well Socket Set (SAE)
SN22501	10-Piece 3/8" Drive Deep Well Socket Set (Metric)



Part No. SN20002

3/8" Drive 12 Point Sockets



Part No. SN20001



Part No. SN20501

Part No.	Size SAE
SN20001	16-Piece Socket Set
SN20008	1/4"
SN20010	5/16"
SN20012	3/8"
SN20014	7/16"
SN20016	1/2"
SN20018	9/16"
SN20020	5/8"
SN20022	11/16"
SN20024	3/4"
SN20026	13/16"
SN20028	7/8"
SN20200	3/8" Ratchet
SN20203	3" Extension
SN20205	6" Extension
SN20208	Universal Joint
SN20220	5/8" Spark Plug Socket

Part No.	Size Metric
SN20501	12-Piece Socket Set
SN20508	8 mm
SN20509	9 mm
SN20510	10 mm
SN20511	11 mm
SN20512	12 mm
SN20513	13 mm
SN20514	14 mm
SN20515	15 mm
SN20516	16 mm
SN20517	17 mm
SN20518	18 mm
SN20519	19 mm

Also Available:

Part No.	Description
SN20030	15/16"
SN20032	1"
SN20226	13/16" Spark Plug Socket



3/8" Drive 6 Point Impact Swivel Sockets

Part No.	Size SAE
SN26001	7-Piece Impact Swivel Socket Set
SN26012	3/8"
SN26014	7/16"
SN26016	1/2"
SN26018	9/16"
SN26020	5/8"
SN26022	11/16"
SN26024	3/4"

Part No.	Size Metric
SN26501	10-Piece Impact Swivel Socket Set
SN26510	10 mm
SN26511	11 mm
SN26512	12 mm
SN26513	13 mm
SN26514	14 mm
SN26515	15 mm
SN26516	16 mm
SN26517	17 mm
SN26518	18 mm
SN26519	19 mm



Part No. SN26501



Part No. SN26001

1/2" Drive 12 Point Sockets

- Highly-polished chrome for appearance and durability
- Cold-formed alloy
- Hardened for ultimate strength and durability

Part No.	Size SAE
SN30001A	16-Piece Socket Set (In Rugged New Holland Case)
SN30014	7/16"
SN30016	1/2"
SN30018	9/16"
SN30020	5/8"
SN30022	11/16"
SN30024	3/4"
SN30026	13/16"
SN30028	7/8"
SN30030	15/16"
SN30032	1"
SN30034	1-1/16"
SN30036	1-1/8"
SN30038	1-3/16"
SN30040	1-1/4"
SN30200	1/2" Ratchet
SN30205	5" Extension

Part No.	Size Metric
SN30501A	17-Piece Socket Set
SN30513	13 mm
SN30514	14 mm
SN30515	15 mm
SN30516	16 mm
SN30517	17 mm
SN30518	18 mm
SN30519	19 mm
SN30520	20 mm
SN30521	21 mm
SN30522	22 mm
SN30523	23 mm
SN30524	24 mm
SN30526	26 mm
SN30527	27 mm
SN30529	29 mm
SN30530	30 mm
SN30532	32 mm



Part No. SN30001A



Part No. SN30501A

1/2" Drive Deep 6 Point Sockets

- Deep well socket for bolt clearance
- Highly-polished chrome for appearance and durability
- Made from high-grade chrome vanadium steel
- Hardened for ultimate strength and durability



Part No. SN32001A



Part No. SN32501A

Part No.	Size SAE
SN32001A	14-Piece Socket Set
SN32014	7/16"
SN32016	1/2"
SN32018	9/16"
SN32020	5/8"
SN32022	11/16"
SN32024	3/4"
SN32026	13/16"
SN32028	7/8"
SN32030	15/16"
SN32032	1"
SN32034	1-1/16"
SN32036	1-1/8"
SN32038	1-3/16"
SN32040	1-1/4"

Part No.	Size Metric
SN32501A	17-Piece Socket Set
SN32513	13 mm
SN32514	14 mm
SN32515	15 mm
SN32516	16 mm
SN32517	17 mm
SN32518	18 mm
SN32519	19 mm
SN32520	20 mm
SN32521	21 mm
SN32522	22 mm
SN32523	23 mm
SN32524	24 mm
SN32526	26 mm
SN32527	27 mm
SN32529	29 mm
SN32530	30 mm
SN32532	32 mm

1/2" Drive Extension Set

Part No.	Size SAE
SN33003	3-Piece Extension Set
SN30202	2" Overall Length
SN30205	5" Overall Length
SN30210	10" Overall Length



Part No. SN33003

1/2" Drive Deep 6 Point Impact Sockets

Part No.	Size SAE
SN31201	13-Piece Deep Impact Socket Set
SN31216	1/2"
SN31218	9/16"
SN31220	5/8"
SN31222	11/16"
SN31224	3/4"
SN31226	13/16"
SN31228	7/8"
SN31230	15/16"
SN31232	1"
SN31234	1-1/16"
SN31236	1-1/8"
SN31238	1-3/16"
SN31240	1-1/4"

Part No.	Size Metric
SN31251	15-Piece Deep Impact Socket Set
SN32210	10 mm
SN32211	11 mm
SN32212	12 mm
SN32213	13 mm
SN32214	14 mm
SN32215	15 mm
SN32216	16 mm
SN32217	17 mm
SN32218	18 mm
SN32219	19 mm
SN32220	20 mm
SN32221	21 mm
SNC32222	22 mm
SN32223	23 mm
SN32224	24 mm



Part No. SN31201



Part No. SN31251



Part No. SN36001



Part No. SN31501

1/2" Drive 6 Point Impact Sockets

Part No.	Size SAE
SN31001	11-Piece Impact Socket Set
SN31012	3/8"
SN31014	7/16"
SN31016	1/2"
SN31018	9/16"
SN31020	5/8"
SN31022	11/16"
SN31024	3/4"
SN31026	13/16"
SN31028	7/8"
SN31030	15/16"
SN31032	1"

Part No.	Size Metric
SN31501	10-Piece Impact Socket Set
SN31510	10 mm
SN31511	11 mm
SN31512	12 mm
SN31513	13 mm
SN31514	14 mm
SN31515	15 mm
SN31516	16 mm
SN31517	17 mm
SN31518	18 mm
SN31519	19 mm

1/2" Drive 6 Point Impact Swivel Sockets

Part No.	Size SAE
SN36001	8-Piece Impact Swivel Socket Set
SN36016	1/2"
SN36018	9/16"
SN36020	5/8"
SN36022	11/16"
SN36024	3/4"
SN36026	13/16"
SN36028	7/8"
SN36030	15/16"

Part No.	Size Metric
SN36501	13-Piece Impact Swivel Socket Set
SN36510	10 mm
SN36511	11 mm
SN36512	12 mm
SN36513	13 mm
SN36514	14 mm
SN36515	15 mm
SN36516	16 mm
SN36517	17 mm
SN36518	18 mm
SN36519	19 mm
SN36521	21 mm
SN36522	22 mm
SN36524	24 mm



Part No. SN36501

3/4" Drive Impact Sockets

Part No.	Size SAE
SN41001	13-Piece Impact Socket Set
SN41024	3/4"
SN41026	13/16"
SN41028	7/8"
SN41030	15/16"
SN41032	1"
SN41034	1-1/16"
SN41036	1-1/8"
SN41038	1-3/16"
SN41040	1-1/4"
SN41042	1-5/16"
SN41044	1-3/8"
SN41046	1-7/16"
SN41048	1-1/2"

Part No.	Size Metric
SN41501	14-Piece Impact Socket Set
SN41519	19 mm
SN41520	20 mm
SN41522	22 mm
SN41524	24 mm
SN41527	27 mm
SN41530	30 mm
SN41531	31 mm
SN41532	32 mm
SN41534	34 mm
SN41535	35 mm
SN41536	36 mm
SN41538	38 mm
SN41541	41 mm
SN41546	46 mm



Part No. SN41001



Part No. SN40501

3/4" Drive Sockets

- Highly-polished chrome for appearance and durability
- Made from high-grade chrome vanadium steel
- Hardened for ultimate strength and durability
- Lifetime replacement warranty

Part No.	Size Metric
SN40501	13-Piece Socket Set
SN40522	22 mm
SN40524	24 mm
SN40527	27 mm
SN40530	30 mm
SN40532	32 mm
SN40535	35 mm
SN40536	36 mm
SN40538	38 mm
SN40541	41 mm
SN40546	46 mm
SN40550	50 mm
SN40554	54 mm
SN40555	55 mm

Part No.	Size SAE
SN40001	21-Piece Socket Set (In Metal Storage Box)
SN40028	7/8"
SN40030	15/16"
SN40032	1"
SN40034	1-1/16"
SN40036	1-1/8"
SN40038	1-3/16"
SN40040	1-1/4"
SN40042	1-5/16"
SN40044	1-3/8"
SN40046	1-7/16"
SN40048	1-1/2"
SN40052	1-5/8"
SN40054	1-11/16"
SN40056	1-3/4"
SN40058	1-13/16"
SN40060	1-7/8"
SN40064	2"
SN40200	3/4" Ratchet
SN40204	4" Extension
SN40208	8" Extension
SN40219	19" Flexible Handle



Part No. SN40001



53-Piece General Service Kit

Part No.	Description
SN99953	53-Piece General Service Kit (In Rugged New Holland Case)

3/8" Drive Sockets

Part No.	Size SAE/Metric	Part No.	Size SAE/Metric
SN20008	1/4"	SN20511	11 mm
SN20010	5/16"	SN20512	12 mm
SN20012	3/8"	SN20513	13 mm
SN20014	7/16"	SN20514	14 mm
SN20016	1/2"	SN20515	15 mm
SN20018	9/16"	SN20516	16 mm
SN20020	5/8"	SN20517	17 mm
SN20022	11/16"	SN20518	18 mm
SN20024	3/4"	SN20519	19 mm
SN20026	13/16"	SN20220	5/8" Spark Plug
SN20028	7/8"	SN20226	13/16" Spark Plug
SN20030	15/16"	SN20200	3/8" Ratchet
SN20032	1"	SN20203	3" Extension
SN20508	8 mm	SN20205	5" Extension
SN20509	9 mm	SN20208	Universal Joint
SN20510	10 mm	SN20110	Breaker Bar

Wrenches & Pliers

Part No.	Description
SN11008	8" Adjustable Wrench
SN90049	10" Arc Joint Pliers
SN90017	7" Needle Nose Pliers
SN90027	7" Slip Joint Pliers
SN90037	7" Diagonal Cutter Pliers

1/4" Screwdriver Bits

Size SAE/Metric
1/4" Dr. Hex Bit Holder (31013 Williams)
5/32" Slotted Bit (24803)
3/16" Slotted Bit (24805)
1/4" Slotted Bit (24807)
#1 Phillips Bit (24811)
#2 Phillips Bit (24813)
#3 Phillips Bit (24815)
#1 Square Bit (24819)
#2 Square Bit (24821)
1/8" Hex
5/32" Hex
7/32" Hex
1/4" Hex

Adaptors

Part No.	Description
SN11438	1/4" Female – 3/8" Male Adaptor
SN23814	3/8" Female – 1/4" Male Adaptor

1/4" Drive Sockets

Part No.	Description
SN10209	Spinner Handle



Part No. SN99953

45-Piece Bit Set

- Made from high-grade chrome vanadium steel
- Nickel-chrome finish for durability



Part No. SN18001A

Part No.	Description
SN18001A	45-Piece Bit Set (In Rugged New Holland Case)
SN22233	3/8"-1/2" Drive / Adaptor (3/8" Female - 1/2" Male)
SN23814	3/8"-1/4" Drive / Adaptor (3/8" Female - 1/4" Male)
SN20200	3/8" Drive / Ratchet
SN20208	3/8" Drive / Universal Joint
SN20203	3/8" Drive / 3" Extension
SN10610	1/4" Drive / T10 Torx Socket
SN10615	1/4" Drive / T15 Torx Socket
SN10620	1/4" Drive / T20 Torx Socket
SN10625	1/4" Drive / T25 Torx Socket
SN10627	1/4" Drive / T27 Torx Socket
SN20630	3/8" Drive / T30 Torx Socket
SN20640	3/8" Drive / T40 Torx Socket
SN20645	3/8" Drive / T45 Torx Socket
SN20650	3/8" Drive / T50 Torx Socket
SN20655	3/8" Drive / T55 Torx Socket
SN30660	1/2" Drive / T60 Torx Socket
SN25504	3/8" Drive / 4 mm Hex Socket
SN25505	3/8" Drive / 5 mm Hex Socket
SN25506	3/8" Drive / 6 mm Hex Socket
SN25507	3/8" Drive / 7 mm Hex Socket
SN25508	3/8" Drive / 8 mm Hex Socket
SN35510	1/2" Drive / 10 mm Hex Socket
SN35512	1/2" Drive / 12 mm Hex Socket
SN35514	1/2" Drive / 14 mm Hex Socket
SN35517	1/2" Drive / 17 mm Hex Socket
SN35519	1/2" Drive / 19 mm Hex Socket
SN20304	3/8" Drive / 1/8" Hex Socket
SN20305	3/8" Drive / 5/32" Hex Socket
SN20306	3/8" Drive / 3/16" Hex Socket
SN20307	3/8" Drive / 7/32" Hex Socket
SN20308	3/8" Drive / 1/4" Hex Socket
SN20310	3/8" Drive / 5/16" Hex Socket
SN20312	3/8" Drive / 3/8" Hex Socket
SN20314	3/8" Drive / 7/16" Hex Socket
SN30316	1/2" Drive / 1/2" Hex Socket
SN30318	1/2" Drive / 9/16" Hex Socket
SN30320	1/2" Drive / 5/8" Hex Socket
SN30324	1/2" Drive / 3/4" Hex Socket
SN21106	3/8" Drive / 3/16" Slotted Socket
SN21108	3/8" Drive / 1/4" Slotted Socket
SN21110	3/8" Drive / 5/16" Slotted Socket
SN21112	3/8" Drive / 3/8" Slotted Socket
SN22221	3/8" Drive / #1 Phillips Socket
SN22222	3/8" Drive / #2 Phillips Socket
SN22223	3/8" Drive / #3 Phillips Socket

80-Piece Field Service Kit

Part No.	Description
SN99980	80-Piece Field Service Kit (In Rugged New Holland Case)

3/8" Drive Sockets / Ratchets / Extensions

Part No.	Size SAE/Metric	Part No.	Size SAE/Metric
SN20008	1/4"	SN20511	11 mm
SN20010	5/16"	SN20512	12 mm
SN20012	3/8"	SN20513	13 mm
SN20014	7/16"	SN20514	14 mm
SN20016	1/2"	SN20515	15 mm
SN20018	9/16"	SN20516	16 mm
SN20020	5/8"	SN20517	17 mm
SN20022	11/16"	SN20518	18 mm
SN20024	3/4"	SN20519	19 mm
SN20026	13/16"	SN20220	5/8" Spark Plug
SN20028	7/8"	SN20226	13/16" Spark Plug
SN20030	15/16"	SN20200	3/8" Ratchet
SN20032	1"	SN20203	3" Extension
SN20508	8 mm	SN20205	5" Extension
SN20509	9 mm	SN20208	Universal Joint
SN20510	10 mm	SN20110	NEW Breaker Bar

1/2" Drive Sockets / Ratchets / Extensions

Part No.	Size SAE/Metric	Part No.	Size SAE/Metric
SN30014	7/16"	SN30515	15 mm
SN30016	1/2"	SN30516	16 mm
SN30018	9/16"	SN30517	17 mm
SN30020	5/8"	SN30518	18 mm
SN30022	11/16"	SN30519	19 mm
SN30024	3/4"	SN30520	20 mm
SN30026	13/16"	SN30521	21 mm
SN30028	7/8"	SN30522	22 mm
SN30030	15/16"	SN30523	23 mm
SN30032	1"	SN30524	24 mm
SN30034	1-1/16"	SN30527	27 mm
SN30036	1-1/8"	SN30200	1/2" Drive Ratchet
SN30038	1-3/16"	SN30205	5" Extension
SN30040	1-1/4"	SN30210	10" Extension
SN30513	13 mm	SN30208	Universal Joint
SN30514	14 mm		

Screwdrivers

Part No.	Size
SN80004	Flat Blade 4"
SN80042	Phillips #2

Combination Wrenches

Part No.	Size SAE	Part No.	Size Metric
SN60012	3/8"	SN60510	10 mm
SN60014	7/16"	SN60511	11 mm
SN60016	1/2"	SN60512	12 mm
SN60018	9/16"	SN60513	13 mm
SN60020	5/8"	SN60514	14 mm
SN60022	11/16"	SN60515	15 mm
SN60024	3/4"	SN60516	16 mm
		SN60517	17 mm



Part No. SN99980



Part No. SN17038

3/8" Air Ratchet Wrench

- Rear exhaust
- Max Torque: 55 ft. lb. (75 Nm)
- Working Torque: 5–55 ft. lb. (7–75 Nm)
- Max Free Speed: 200 rpm
- Avg. CFM: 3.92 CFM (28 SNFM)
- Recommended Air Pressure: 90 psi (6.2 bar)
- Weight: 2.65 lbs. (1.20 kgs)
- Made in Taiwan
- One-year limited warranty

Part No.	Description
SN17038	3/8" Air Ratchet Wrench

3/4" Drive Air Impact Wrench

- Max Torque: 1,100 ft. lb. (1491 Nm)
- Free Speed: 5,500 rpm
- Air Inlet: 3/8" NPT
- Air Hose: 1/2" ID
- Avg. CFM: 9.5 CFM
- Weight: 12.27 lbs. (5.60 kgs)
- Sound: 87 dB
- Made in Taiwan
- One-year limited warranty

Part No.	Description
SN17075	3/4" Drive Air Impact Wrench



Part No. SN17075

Air Die Grinders

- Clean dies, rotors, backing plates and brake pad mounts
- Remove gasket material
- Grind dies and valve seats
- Dress welds and enlarge holes
- Compact mini-design with 90° angled head for easy access
- Ergonomic handle grip increases comfort and control
- Safety lever throttle
- Built-in speed regulator
- Brass bearing cap and hose adaptor
- One-year limited warranty

Part No.	Description
SN17490	1/4" 90° Mini Die Grinder
SN17400	1/4" Straight Medium Die Grinder

Part No. SN17490



Part No. SN17400

1/2" Drive Air Impact Wrench

- Steel-nose case with lightweight aluminum housing
- Rotary action air motors – ball-bearing mounted for balance, speed, and power
- Pressure-feed grease lubrication
- Five-position air speed regulator
- Convenient slide bar forward/reverse
- Variable-speed trigger
- 425 ft. lb. (577 Nm) maximum torque forward/reverse
- 8,000 rpm
- One-year limited warranty

Part No.	Description
SN17050	1/2" Drive Air Impact Wrench



Part No. SN17050

Blow Guns

Part No.	Description
SN1025AG	10-1/4" Pistol Grip Blow Gun
SN450AG	4-1/2" Blow Gun Taper Rubber Tip
SN24AGW	24" Air Gun and Wand
SN36AGW	36" Air Gun and Wand
SN48AGW	48" Air Gun and Wand

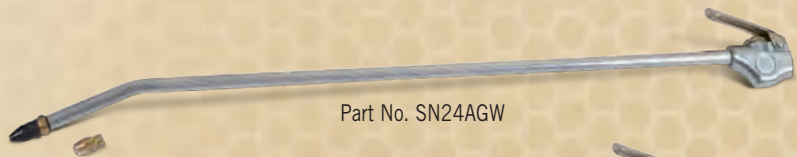
Part No. SN1025AG



Part No. SN450AG



Part No. SN24AGW



Part No. SN36AGW



Part No. SN48AGW



Flashlights

- One-year limited warranty

Part No.	Description
SNLED1	New Holland Pen Light (Blue) 3W / 1 CREE LED Bulb
SNLED1P	New Holland Mini Flashlight (Pink) 3W / 1 CREE LED Bulb
SNLED1B	New Holland Mini Flashlight (Blue) 3W / 1 CREE LED Bulb
SNLED2	New Holland Spot Flood Light (Blue) LED

Part No. SNLED1B



Part No. SNLED1



Part No. SNLED1P



Part No. SNLED2

Premium 25' Tape Measure

- Automatic blade lock
- Push button retrieval
- Rubber coated housing

Part No.	Description
SN27253	New Holland 1" x 25' English Scale



Part No. SN27253



Professional 25' Tape Measure

Part No.	Description
SN27252	New Holland 1" x 25' English Scale
SN27252NC	New Holland Construction 1" x 25' English Scale



Part No. SN27252



Part No. SN27252NC

Standard Duty 25' Tape Measure

Part No.	Description
SN27251	New Holland 1" x 25' English/Metric Scale (Blue)
SN27251P	New Holland 1" x 25' English/Metric Scale (Pink)



Part No. SN27251P

Part No. SN27251

English/Metric Rule on Standard Duty and Pocket Tape Measures



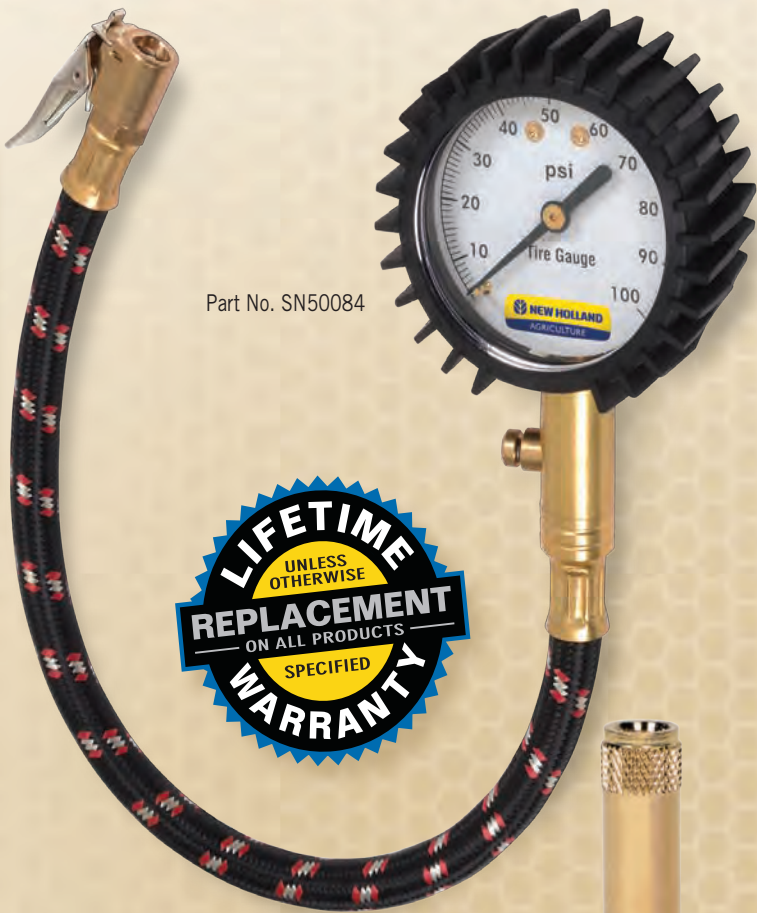
Part No. SN27126

12' Pocket Tape Measure

Part No.	Description
SN27126	New Holland 5/8" x 12' English/Metric Scale

Tyre Pressure Gauges

Part No.	Description
SN50084	Dial Tyre Gauge with 14" Hose 0-100 psi
SN50082	Dial Pressure Gauge 0-100 psi
SN50080P	Talking Tyre Gauge 0-99 psi (Pink)
SN50080	Talking Tyre Gauge 0-99 psi (White)
SN50085	Digital Tyre Gauge 0-150 psi
SN50083	Pencil Tyre Gauge 0-50 psi (Chrome)
SN50086	Air Liquid Tyre Gauge 0-75 psi (Blue)



Part No. SN50084



Part No. SN50080P



Part No. SN50080



Part No. SN50085



Part No. SN50082



Part No. SN50083



Part No. SN50086

50 Pack Pocket Screwdrivers

- Reversible Phillips® / flat tip blade and valve turner

Part No.	Description
SN80150	50 Pack Pocket Screwdrivers



Part No. SN80150

Locks

Part No.	Description
SNLOCK1	1-1/2" Shank Heavy-Duty Padlock
SNCBLL1	6 Foot Cable Lock



Part No. SNCBLL1



Part No. SNLOCK1

Stainless Steel Magnetic Tray

- 9-3/8" x 5-3/8" stainless steel tray
- Two 3-1/4" PVC coated magnets help prevent scratching

Part No.	Description
SN80531	Stainless Steel Magnetic Tray



Part No. SN80531

3-Piece Utility Tool Set

- 4" round magnetic tray to hold nuts, bolts, and other small parts
- Telescoping magnetic pick up tool to retrieve dropped or hard to reach metal parts
- Power ring to release magnet
- Telescoping inspection mirror helps you see in places your head won't fit

Part No.	Description
SN80530	3-Piece Utility Tool Set



Part No. SN80530



8-in-1 Mini Multi-Tool

Part No.	Description
SN50081NA	8-in-1 Mini Multi-Tool



Part No. SN50081NA

Multi-Tool with LED Light

Part No.	Description
SN50005AMP	New Holland Agriculture Multi-Tool with LED Light



Part No. SN50005AMP



Part No. SN50005AMP



Part No. SN50003

Duffel Bag / Backpack / Laptop Bag

- Made from water resistant material
- Insulated cooler pocket
- Convenient laptop storage compartment
- 2-way strap system allows duffel bag to convert to a backpack
- Manufacturer's limited warranty

Part No.	Description
SN50003	Duffel/Backpack/Laptop Bag

This image shows a single sheet of white paper with horizontal blue or grey ruling lines. The lines are evenly spaced and run across the width of the page. There are no margins, text, or other markings on the paper.

Notes:

[illegible]

Notes:

 **NEW HOLLAND**
AGRICULTURE

 **NEW HOLLAND**
CONSTRUCTION



2015 RETAIL HAND TOOLS



CNH ORIGINAL
PARTS

PM-16444 Issued 10/13 Replaces: PM-15544
©2013 CNH America LLC. All rights reserved.
New Holland is a registered trademark of CNH America LLC.
www.cnhtoolsandsupplies.com

SOLD AND SERVICED BY: