



# SEEDING CATALOGUE



THE **STRENGTH** BEHIND YOU



# CONTENTS

**04** Equipment highlight

**05** Genuine engines

**06** Genuine lubricants

**11** Batteries

**12** Genuine filter kits

**16** High performance paints

**18** Pre-seeding maintenance

**22** Precision farming

**27** RAM mounts

**28** Tracks

**32** Cabin parts

**37** Communications

**39** Roller wheel kits

**40** Reman

**44** Toys

**46** Merchandise

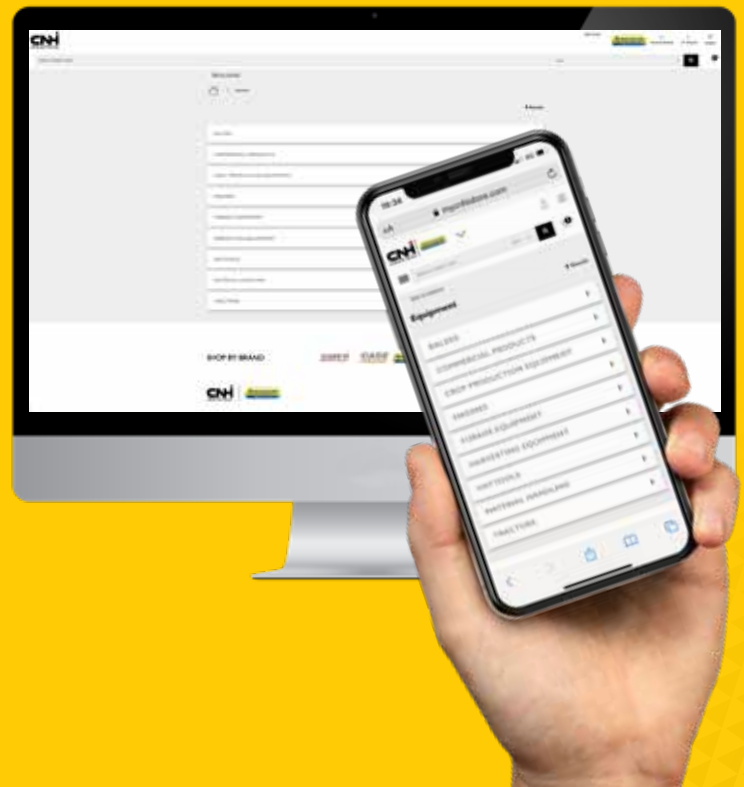




# NEED A PART NUMBER?

You can now find the exact part numbers you need for your equipment via the [MyCNHiStore](#)

Search by part number,  
model or category.



[CLICK HERE](#)

to find all the parts you need, fast!



## EQUIPMENT HIGHLIGHT

# T8 AND T9 RANGE WITH PLM INTELLIGENCE

The New Holland T8 and T9 range with PLM Intelligence has become the benchmark in high horsepower tractors. The T9 PLMi and T8 PLMi series has more power and productivity, cab enhancements, maximum versatility and additional support features aimed at reducing downtime and keeping operators in the paddock through MyPLM Connect.

The PLMi technology enables farmers to make informed agronomic decisions to improve their farming operations. Intuitive and fully integrated, PLMi increases farm productivity by providing real-time remote data display, real-time servicing reports and remote software update capabilities.

The T8 range, which is offered here in Australia is available in 320 - 435 horsepower (hp) configurations, ideal for spreading and chaser bin work. A versatile tractor with a good weight capacity that can be reconfigured with dual wheels. The largest tractor T9 model is available between 450-670 hp, and is ideal for large implements including sprayers and tillage equipment out in the field. These two tractor series are a great choice for broadacre farmers as cab comfort and high performance is a key focus.





# NEW HOLLAND GENUINE ENGINES



## FOR SEEDING, AGRICULTURE NEEDS POWER

**5801509339**

The New Holland engine family is developed for the most demanding and heavy-duty needs. This engine family is robustly designed for a wide range of agricultural applications.

Genuine engines are vigorously tested to ensure they exceed customers' expectations in performance and efficiency, while complying with stricter emission regulations.

All New Holland genuine engines come with a one year warranty.

Part Number	Application
5801509339	Engine tractors T9.505, T9.505, T9.390, T9.560
5801507161	Engine tractors T9.670, T9.615
5801793848	Engine tractors T8.410
5801425055	Engine tractors T7.250



# A LINE-UP OF LEADERSHIP



## TESTED, VETTED AND READY TO REVOLUTIONISE THE INDUSTRY.

The new and comprehensive genuine lubricants portfolio offers the latest original equipment manufacturer (OEM) formula.

**While these products are cross compatible, only our genuine lubricants are:**

- built specifically for New Holland Agriculture equipment
- tested and fully approved to meet or exceed API and CNH Industrial Material Standards (MAT)
- approved for New Holland Agriculture warranties.

Only the genuine products in this portfolio are engineering approved and recommended for New Holland Agriculture equipment.



## ENGINE OIL

Our engine oils are specially formulated to meet the stringent demands of today's engines. Their low-SAPS (sulphated ash, phosphorus and sulphur) additive technology helps protect exhaust catalysts and diesel particulate filters (DPF) on the latest low-emission machines.

As a safeguard against premature wear, our genuine engine oils are engineered to meet new, next-generation requirements.

Our MAT 3571 and 3572 oil specifications are extensively tested. They provide maximum protection in oxidation and aeration control, enhanced shear stability and improved engine performance at high temperature operation of agricultural equipment.



### Engine Oil SAE 15W-40 MAT 3572 API CK-4



**73394661**



**73394536**



**73394537**



### Engine Oil Super SAE 15W-40 MAT 3622 API CI-4



**73394667**



**73394668**



**73394533**



**73394534**



### Engine Oil SAE 10W-40 MAT 3571 Synthetic API CK-4



**73394542**



**73394670**



**73394541**



# GENUINE LUBRICANTS PORTFOLIO

## HYDRAULIC TRANSMISSION OIL - PREMIUM

New Holland Agriculture remains at the forefront of technological innovation with our newly improved Hydraulic Transmission Oil - Premium. This oil is designed to keep tractor transmissions, axles and hydraulic systems free from deposits while inhibiting wear, corrosion, sludge and foaming.

Our Hydraulic Transmission Oil - Premium is engineered specifically for New Holland Agriculture equipment. This oil uses the latest anti-wear additives. It is also formulated to provide premium performance and protection for all generations of equipment – from legacy to CVTs.



### Hydraulic Transmission Oil - Premium



**73394683**



**73394682**



**73394521**



**73394522**

## UNIVERSAL TRANSMISSION OIL - PREMIUM

Universal Transmission Oil - Premium is a universal tractor transmission oil designed for use in transmissions, hydraulic systems, oil immersed brakes and other ancillary systems fitted to agricultural and construction equipment.



### Universal Transmission Oil - Premium SAE 10W-30



**73394675**



**73394674**



**73394527**



**73323225**



## EXTENDED-LIFE OAT COOLANT

This long service life coolant/antifreeze is exclusively based on a synergistic combination of Organic Additive Technology (OAT) and provides excellent overall corrosion protection. Suitable for all heavy and light-duty diesel engines, as well as natural gas and gasoline engines. This formulation is approved by our engineers under the new next-generation MAT 3724 specifications and provides superior high temperature protection in extreme conditions. It protects cooling system metals (brass, copper, solder, steel and cast iron) against rust, corrosion and deterioration. It also fights against deposit build-up and cylinder liner cavitation.

### OAT Extended Life Coolant/Antifreeze - Premix MAT 3724



**73394595**



**73394604**



**73394594**



## HYPROID GEAR OIL

Our Hypoid Gear Oil offers better overall protection for differentials and gear sets to increase performance under extreme pressures and extend equipment life, while decreasing maintenance costs.

### Hypoid Gear Oil Extreme Pressure SAE 80W-90 MAT3516-A



**73394687**

### Hypoid Gear Oil Extreme Pressure SAE 85W-140 -MAT3516-B



**73394574**



**73394575**





# GENUINE LUBRICANTS PORTFOLIO

## MULTI-PURPOSE GREASE

Our genuine greases are formulated with numerous additives to enhance performance against high temperatures and extreme pressure.

This includes:

- antioxidants
- anti-wear
- extreme pressure additives
- friction modifiers
- dyes
- anti-weld and solid.

The MAT code on each grease label differentiates your product from the rest of the competition. This code certifies that our greases are tested and approved by our engineers to meet the requirements of New Holland Agriculture machines.



**Multi-Purpose 251H EP Grease Extreme Pressure  
/ Anti-Wear / NLGI 2 / Lithium MAT 3555-A**



**73394600**



**73394601**

## ADBLUE®

In today's environmentally conscious world, vehicle emissions are becoming more stringent.

New Holland is committed to ensuring the products we manufacture and sell have a positive effect on the environment.

### The technology:

SCR systems require a reagent as part of the process to convert toxic Nitrogen Oxide (NOx) into harmless Nitrogen and Water. That reagent comes in the form of AdBlue®, an Aqueous Urea Solution of 32.5% Urea that is mixed in exacting proportions of deionised water (AUS32). This ratio is important to meet the correct rate of emission control requirements.

### How it works:

AdBlue® is injected into the exhaust system via an onboard dosing system in accordance with sensors feeding back information about the amount of NOx in the exhaust gases. The AdBlue® heats up in the exhaust pipe and converts to ammonia. The ammonia reacts with the catalyst in the specially designed muffler and converts harmful NOx into water and nitrogen. The On Board Diagnostic (OBD) adjusts the amount of AdBlue® that is injected into the exhaust to control the levels of NOx released via the tailpipe.



**AdBlue®**  
Aqueous Urea Solution



**73322321**



**73322322**



**73322323**



**73322324**



## MADE FOR AUSTRALIA'S HARSHEST ENVIRONMENTS

SmartStart batteries are built to last longer in Australia's harshest environments. We offer peace of mind and reliability with an industry leading warranty.



### SMARTSTART™ FEATURES:

- increased starting power, even in the coldest conditions
- includes lifegrid™ technology for consistent performance
- advanced punched grid design for reliability
- ergonomic cover design featuring an 'easy to carry' two-handle grip
- large inter-cell connectors provide superior vibration protection
- maintenance-free performance
- epoxy anchor-bonding for improved strength



SmartStart is for more than just your Agriculture equipment. SmartStart also provides a wide range of batteries for passenger vehicles, SUV/4WD/light commercial vehicles, heavy-duty trucks, motorcycles and marine batteries.



# GENUINE FILTERS



## ENGINE OIL FILTERS

### FAST FACTS

#### Protecting today's high-horsepower engines

Our genuine engine oil filters:

- are 70% more efficient in filtering critical contaminants using our MicroLoc™ synthetic media compared to paper-based media
- allow filtered oil to reach the engine more quickly with improved cold flow
- deliver high soot tolerance and dirt-holding capacity for longer filter life.

For best performance, always use with genuine engine oil.



### THE 30-60-90 HORSEPOWER RULE

Off-road equipment generates more usable horsepower – 30% more than on-road trucks and 60% more than automotive engines.

Tighter tolerances and higher temperatures than ever before result in severe duty cycles.

Therefore, Off-road engines require high quality filtration and increased durability.



**30%**  
**HORSEPOWER**  
**USAGE**



**60%**  
**HORSEPOWER**  
**USAGE**



**90%**  
**HORSEPOWER**  
**USAGE**





## HYDRAULIC FLUID FILTERS

### FAST FACTS

#### Did you know?

Hydraulic pumps are sensitive to contaminants as small as 10 microns – that's 10x smaller than a grain of table salt. Without proper filtration, equipment can experience:

- slips
- rough shifts
- brake system chatter
- critical failure of internal components, such as excessive gear wear.

**A vast majority of hydraulic component failures are caused by dirt particles.**

**Up to 70% of these failures can be prevented with proper filtration.**

Our genuine hydraulic filters have up to a 99.9% efficiency at a lower micron rating compared to the competitor.

For best performance, always use genuine hydraulic transmission fluid when recommended by the operator's manual.



### NEW HOLLAND ADVANTAGE

Brand	Capacity (g)		Average Pressure At Failure (psid)	Minimum Spec for New Holland Genuine Filters (psid)	
Competitor filter	130	<b>48% greater capacity for genuine New Holland filters</b>	189	200	<b>Genuine New Holland filters are 26% stronger</b>
<b>New Holland genuine filter</b>	193		239		

Results from a field test of New Holland filter (84226263) versus competitive filter (ISO 16889).



# GENUINE FILTERS



## FUEL FILTERS

### FAST FACTS

#### Did you know?

As fuel travels through a typical supply chain, it picks up dirt and water. A typical litre of fuel can contain over 8 million contaminants.

**Few things impact equipment productivity faster than a low-quality fuel filter.**

Extremely high injection pressures and tight tolerances of today's low-emissions engines make them highly sensitive to even the smallest amount of water or contaminants. With pressures as high as 30,000 psi, contaminants act as an abrasive jet, capable of eroding fuel pump and injector surfaces.

### NEW HOLLAND ADVANTAGE

Today's Tier 4 certified engines require fuel to be 100× cleaner than engines that were built a few years ago.

Our genuine fuel filters feature advanced design and go through extensive testing to ensure the very best equipment protection and performance.

- MicroLoc™ synthetic media delivers high-efficiency filtration that removes up to 99.7% of contaminants.
- 2× more dirt holding capacity extends the service life of your equipment.
- Offers better injector and fuel pump protection by eliminating more contaminants than competitor filters.
- Patented self-venting drain valve on fuel/water separators dramatically improves removal of free and emulsified water.







## ENGINE AIR FILTERS

### FAST FACTS

#### Did you know?

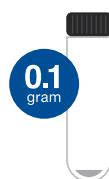
A typical diesel engine requires more than 8,000 litres of clean air for every litre of fuel it burns. The better an engine can breathe, the better it can work.

- Filter media, materials, seals and design features are engineered specifically for the machine to which they are fitted.
- Aftermarket filters might not integrate with whole machine performance system design.
- Initial savings with a will-fit filter may end up costing you much more when repairs are needed.

### NEW HOLLAND ADVANTAGE

**It only takes a few grams of dirt to dust an engine.**

Compare how much dust can pass through an air filter during 500 hours of operation.



**NEW HOLLAND  
MICROLOC™ FILTERS**

MicroLoc filter media  
**99.99% efficiency**



**NEW HOLLAND  
STANDARD FILTERS**

Standard filter media  
**99.9% efficiency**



**AFTERMARKET  
FILTERS**

Standard filter media  
**99% efficiency**



# HIGH PERFORMANCE PAINTS

Colours that stand the test of time.

- A full range of products to make your machine look as good as new.
- New Holland colours are validated by our engineering practices and look identical to those used in production.







Name	Aerosol	1 Litre	4 Litre
New Holland Blue	9973524	9973459	73322017
Bright Yellow (Millennium)	9973525	9973460	73322006
CNHi Dark Grey	9973500	9973401	73322014
White Bianco	9973506	9973414	73322015
Chassis Grey	73322071	73322072	73323140
New Holland Red (European)	9973508	9973426	73322012
New Holland Red (American)	73322004	9973467	73322005
New Holland 85 Yellow	9973511	9973436	73322754
New Holland Super Etch Grey	73322025	73323136	73322028
New Holland Hi Temp Gloss Black	73323096	73323115	73322048
Ford Blue	9973513	9973439	73322019
Ford Light Grey	73323077	73323097	73323116
Fiat Orange	9973512	9973437	73323143
Fordson Empire Blue	73323078	9973449	73323117
Fiat Dark Brown	9973503	9973405	73323144
Fiat Terracotta	9973523	9973458	73323145
Fiat Old Orange	9973518	9973447	73323146
Gloss Black	73323079	73323098	73323118
Semi-Gloss Black	73323080	73323099	73323119
Matt Black	9973502	9973403	73322007
Buff Primer	73323083	73323102	73323122
Red Oxide Primer	9973521	9973455	73322029
Grey Primer	73322046	9973454	73322030



New Holland Blue



Bright Yellow  
(Millennium)



CNHi Dark Grey



White Bianco



Chassis Grey



New Holland Red  
(European)



New Holland Red  
(American)



New Holland 85  
Yellow



NH Super Etch Grey



NH Hi Temp Gloss  
Black



Ford Blue



Ford Light Grey



Fiat Orange



Fordson Empire Blue



Fiat Dark Brown



Fiat Terracotta



Fiat Old Orange



Gloss Black



Semi Gloss Black



Matt Black



Buff Primer



Red Oxide Primer



Grey Primer



## SOW THE BENEFITS IN 2022

**TRIDON** ▶

### CABLE TIE COMBO PACKS ASSORTED COLOURS

- 5 Vibrant Colours – Blue, Green, Yellow, Pink, Orange

Part Number	Size	Pack Qty
TDCTP31	200 x 4.8mm	100
TDCTP32	300 x 4.8mm	100

### CABLE TIE PACKS - BLACK

Part Number	Size	Pack Qty
TDCT154BKCD	150 x 4mm	100
TDCT205BKCD	200 x 5mm	100
TDCT305BKCD	300 x 5mm	100
TDCT408BKCD-100	400 x 8mm	100
TDCT559BKCD	550 x 9mm	25
TDCT759BKCD	750 x 9mm	25

### CABLE TIE ASSORTED PACK

#### TDCTP07

- Assorted pack for a variety of applications
- Red - 100mm x 2.5mm
- Yellow - 100mm x 2.5mm
- Blue - 100mm x 2.5mm
- Black - 150mm x 2.5mm
- Natural - 150mm x 2.5mm
- Pack Qty: 500



### CABLE TIE COMBO PACK

#### TDCTCP10

- Contains 1000 popular black cable ties in assorted sizes
- 3 x 100mm (Qty 200)
- 4 x 150mm (Qty 200)
- 5 x 200mm (Qty 400)
- 5 x 300mm (Qty 200)



### BULK HOSE CLAMP PACKS INCLUDES PLASTIC CARRY BOX!

#### TDMP125

- Multi-purpose stainless steel part
- Solid band clamp
- Covers ranges: 11 - 70mm
- 125 clamps



### DOUBLE EAR CLAMP PACK

#### 300 Clamps

#### TDTEC300

- Suitable for use on compressed air, gas and liquid lines
- All popular sizes
- 300 hose clamps with pinching plier



### RUBBER LINED CLAMP PACK

#### 90 Clamps

#### TDTRLC90K

- For pipes, cables, hoses etc.
- Removable rubber lining
- Covers sizes 3.2 - 17.5mm
- Contains 90 rubber lined clamps



### HOSE EAR CLAMP PACK

#### 82 Clamps

#### TDCVP82

- General purpose clamp
- Covers ranges: 6 - 51mm
- 82 clamps
- Perforated stainless steel part



### HOSE CLAMP PACK

#### 82 Clamps

#### TDCVP82SS

- Corrosion resistant
- Covers ranges: 6 - 51mm
- 82 clamps
- Perforated full stainless steel





BE PREPARED  
WITH THESE  
HANDY ITEMS



SEED FLOW LUBRICANTS

WHY IS A SEED LUBRICANT NECESSARY?

Our seed flow lubricants are comprised of either 100% graphite or a 50/50 talc graphite blend. Graphite is a dry lubricant used to lubricate the moving components inside the seed meter, reducing friction and wear. Talc works as a drying agent by coating the seeds to minimise moisture absorption – especially important in air planters. Plus, graphite and talc have anti-static characteristics that help prevent static electricity from developing on plastic metering disks.

BENEFITS YOU CAN SEE IN THE FIELD AND THE SHED.

- Our genuine seed flow lubricant:
- Reduces seed meter component wear.
  - Increases seed delivery consistency by lubricating seed tank, inductor, hoppers, delivery lines and seed tube.
  - Provides optimum seed drying capabilities and controls static electricity to minimise clumping and bridging.

Part Number	Description
407486R1	CNH Industrial Spec, 0.45kg, 100% Graphite, Fine Particle Size
73340733	CNH Industrial Spec, 3.6kg, 100% Graphite, Fine Particle Size
73340370	CNH Industrial Spec, 0.45kg, 50/50 Talc Graphite Blend, Fine Particle Size
73340734	3.6kg, 50/50 Talc Graphite Blend, Fine Particle Size

HOSES

Part Number	Hose Internal Diameter	Hose Length	Colour	Description
87410257	7/8" / 22.2mm	100ft / 30.5m	Black	Poly EVA
4726	1" / 25.4mm	100ft / 30.5m	White	Poly EVA
86993485	1" / 25.4mm	100ft / 30.5m	Black	PVC
86992913	1" / 25.4mm	100ft / 30.5m	Black	Poly EVA
412786A1	1.25" / 31.75mm	100ft / 30.5m	Clear	Clear PVC
86992286	2.5" / 63.5mm	100ft / 30.5m	Black	PVC
3680	2.5" / 63.5mm	100ft / 30.5m	Clear	Clear PVC





# PRE-SEEDING MAINTENANCE



## DIESEL INJECTOR PORT CLEANING KIT

**TL304052**

- Cleans injector ports and seats prior to new injector installation
- Features reusable plugs to prevent contaminants and debris from falling into cylinders during intensive cleaning process
- Includes various size brushes and attachments for deep cleaning



## CROWFOOT WRENCH SET 3/8" METRIC FLARED (8 - 19MM) 12 PC

**TL321265**

- Metric flexible flare type crowfoot wrench set suitable for automotive, industrial and engineering applications
- Flexible head allows 200° of movement
- Suitable for hydraulic, fuel, air and brake fluid lines to avoid rounding the nut



## COOLING SYSTEM FLUSHING GUN PNEUMATIC

**TL308239**

- Provides high-pressure cleaning of radiators and heater cores
- Simply connect air line and water supply and pull trigger
- Essential tool for complete flush of cooling system from old coolant, dirt, rust and scale
- Size: Ø 19, 29, 32, 37, 40mm



## BOLT CUTTERS

- Suitable for general purpose use with soft and medium metal applications only
- Slim head centre cut jaw design enables close surface cutting

Part Number	Length	
TL316002	450mm	18"
TL316004	750mm	30"
TL316005	900mm	36"



**FAMOUS  
TOLEDO**  
EXCELLENCE BY DESIGN

## HIGH LEVERAGE DIAGONAL CUTTERS

- High cutting performance with minimal effort
- For very tough, continuous use
- Chrome vanadium heavy-duty steel, forged, oil-hardened

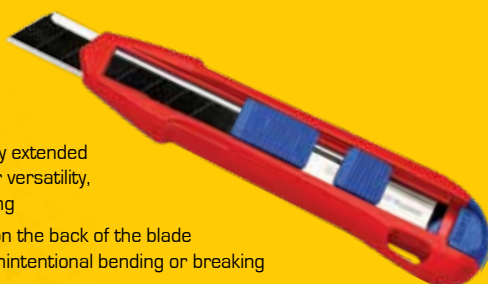


Part Number	Med Hard	Hard	Piano	Length
TK7402180	3.8mm	2.7mm	2.2mm	180mm
TK7402200	4.2mm	3.0mm	2.5mm	200mm
TK7402250	4.6mm	3.5mm	3.0mm	250mm

## KNIPEX CUTIX UNIVERSAL KNIFE

**TK9010165BK**

- The innovative and variably extended stabilisation bar allows for versatility, precision and faster cutting
- Exert targeted pressure on the back of the blade without risk of injury, no unintentional bending or breaking of the blade



## KNIPEX COBRA® XS 100MM

**TK8700100**

- Grips like a big tool: The smallest water pump pliers in the world with full functional capability!
- Optimum access in the narrowest spaces: an especially compact design with a very slim head



## PLIERS WRENCH XS 100MM

**TK8604100**

- Optimum accessibility, even in confined spaces: particularly compact design, very slim head
- One-handed fine adjustment by pushing for the simplest adjustment to different workpiece sizes



**KNIPEX®**





# PRE-SEEDING MAINTENANCE

## BLUETOOTH® BATTERY MONITOR

### MA98415

- Real-time battery monitoring of up to four devices simultaneously
- Monitors can be combined for 24V, 36V and 48V systems (One monitor required per battery)
- Stores and displays historical data
- Tests vehicle cranking and charging systems



## 12V BATTERY MONITOR

### MA98416

- DIY install in 2 minutes
- Bright colour coded LED's indicate battery voltage
- Easily visible from metres away
- Fast, accurate and reliable
- Water and dust proof to IP67



## BATTERY CHARGERS

- One step operation
- Fully automatic charging
- Maintains optimum battery condition



Part Number	AMP	Input	Output	IP65
AE120E	1.2	240 VAC, 50Hz	12VDC	No
AE300E	3	220-240 VAC 1A 50/60HZ	12VDC 3A	Yes

## 12/24V LITHIUM JUMP STARTER

### MA35000

- 12V/24V applications
- Automatic system voltage sensing
- 35,000mAh internal battery capacity
- LiFePO cells for extra safety and stability



**Australian Made for Australian Supply**

CRC's manufacturing of cleaners, lubricants, penetrants and other specialty products meet all the performance standards, certified to ISO 9001. Continually meeting this standard and gaining recertification reflects our ongoing commitment to quality and consistency.

**CLEANERS | LUBRICANTS AND PENETRANTS | PROTECTANTS | SPECIALTY**







## RAVEN RBM RUN BLOCKAGE MODULE

Gain full insight into your seeding and fertilising operation with industry-leading Flowsense™ Sensor Technology.

### FEATURES AND BENEFITS:

- Support for up to 240 FlowSense™ seed/fertiliser sensors
- Dust compensated optical technology allows for minimal cleaning during a season
- Can be configured as a standalone system via iPad and/or ISOBUS system
- Download the Raven SeedView app from the Apple store
- True section awareness with intelligent feedback when paired with Raven Rate Control Module
- Will produce seed count and row by row distribution bar chart display using iPad
- Customisable run time layout using the iPad interface
- FlowSense™ sensor has integrated status LED providing instant feedback for troubleshooting
- Supportive of 1.25" (32mm) hose size



RAVEN



## BOOM CONTROLS

### ENHANCING YOUR RESOURCE CONTROL

Raven's high-performing boom controls use automatic boom height and section controls that improve your accuracy, savings, and profitability, which means less time, effort and wasted inputs and chemicals for your operation.

#### ACCUBOOM™

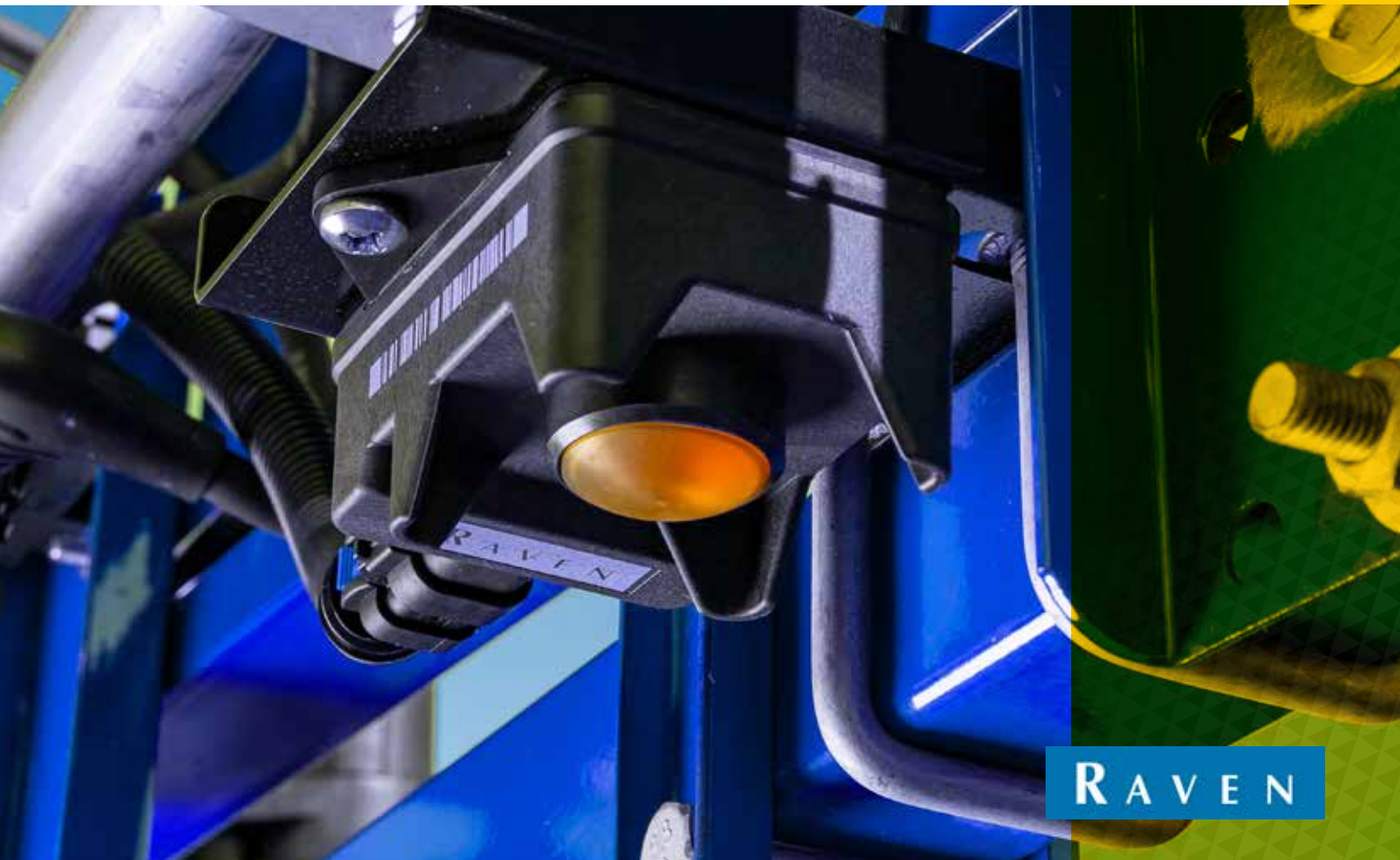
AccuBoom's automatic section control protects against rising input costs, thanks to greater fuel and chemical savings, and faster more accurate spraying.



Raven boom control systems are compatible with Raven and non-Raven equipment and come with a range of options to match your system needs, budget and performance objectives.

#### AUTOBOOM® XRT

Industry-leading radar sensor technology uses simultaneous ground and canopy detection to maintain optimal spray height for maximum product efficiency.





## ISOBUS MIDI ECU

Installation of the ISOBUS Electronic Control Unit (ECU) allows product control of many implements, using the IntelliView IV display without the need for an additional display or controller in the cab.

Allows standard rate control functionality through the VT/UT interface. Adding the task controller unlock to your IntelliView enables automated rate and section control or as applied mapping (subject to implement capabilities).



### FEATURES AND SPECIFICATIONS:

- Straight forward installation, one time set-up
- Simple user interface
- Easy to support
- Increase implement versatility, by making it ISOBUS compatible
- Use existing IntelliView IV or other ISOBUS compliant display
- Kits to suit Raven 4xx, 4xxx and Field IQ full harness installs
- Supports up to 12 Sections or 10 + 2 fence nozzles



### TASK CONTROLLER UNLOCK (IF REQUIRED)

Part Number	Description
47441493	Passcode, IntelliView IV ISOBUS Task Controller
ZTN96553-10	Passcode, Precision IQ & FM-1000+ App ISOBUS Task Controller
ZTN89284	Passcode, FM-1000 ISOBUS Task Controller

### ISOBUS PRODUCT CONTROL ECU

Part Number	Description
ME30481120	ECU, MIDI3.0 ISOBUS ECU
ME0502053-02	Cable Assy, Secondary CAN Jumper Harness (Used with 4 to 6 Products)





## PLM CONNECT

### MANAGE DATA MAPS

- Yield maps
- Guidance line patterns
- As-applied maps
- Seeding and fertiliser prescriptions.

### WIRELESSLY TRANSFER DATA

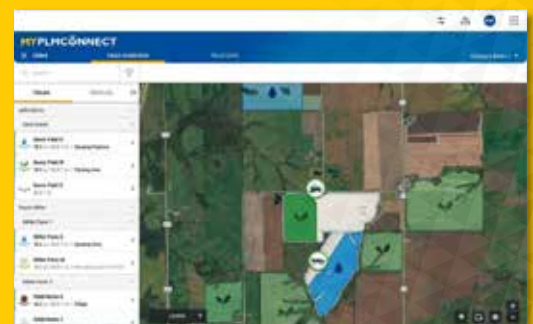
- Use PLM to connect to your trusted advisors or preferred farm management software.
- Make the most of data captured by your machinery
- Drive management decisions based off data analysis.

### CONTROL DATA ACCESS

- Complete control on who can access data generated by your equipment
- Control each piece of data, such as which field data or operational data is sent to partners or farm management software.



**CONNECT AND SECURELY SHARE  
YOUR FARM DATA WITH TRUSTED  
PARTNERS, ANYWHERE, ANYTIME.**







## INTELLIVIEW IV

### ONE CONTROL CENTRE FOR ALL YOUR PRECISION FARMING NEEDS



As the cost of crop inputs continues to rise, the benefits of precision farming is evident. The IntelliView IV is the one control centre you need in your cab to be more productive.

With a 10.4-inch colour touchscreen and up to six run screens on a single monitor, you'll benefit from added capabilities with minimal complexity. Use it to fine-tune options such as remote valve timers and flow control, auto PTO, engine speed settings, wheel slip alarm, calibrations and implement settings, and other key machine functions.





## YOUR LEADER IN MOBILE MOUNTING SOLUTIONS.

RAM® Mounts manufactures rugged and versatile mounting systems for precision farming displays, cameras, tablets and other mobile devices that can be fitted on a wide range of vehicles and agricultural machinery.

With tractors, combines and other farm machinery now having five or more displays in a single cab it can be difficult to mount monitors in a usable position. With the flexibility of the RAM® Mounts you can now mount all hardware with minimum vibration or movement.

### FEATURES AND SPECIFICATIONS:

- **Premium design** - quick installation, infinite adjustability and dampening for the most demanding environments.
- **Customisable** - various solutions to fit your specific needs.
- **Quality material** - mounting systems use powder-coated marine grade aluminium, lightweight high-strength composites and stainless steel hardware.
- **Reputation** - RAM® Mounts solutions have been proven in agricultural environments for years.

Part Number	Description
47762155	Ram® X-Grip® holder for 9 "10" tablets. Compatible with RAM-22U ball adapter
47762521	Kit, tablet mount assy
47762523	Kit, phone mount assy
87284257	Ram double socket arm C ball
87284258	Base plate 1.5" (3.81 cm) ball AMPS round
87284259	U-Bolt base 0.75" (1.91 cm) to 1.25" (3.18 cm) diameter
87386396	Colour display arm
87386398	Sq mount ram
87645094	Arm assy C size
48165853	Suction mount base
ZAEBARTABLETMNT	Universal tablet mount
ZAEBARPHONEMNT	Universal smartphone mount



47762155



47762521



47762523



87284257



87284258



87284259



87386396



87386398



87645094



48165853

### UNIVERSAL MOUNT ADVANTAGES:

- Suited to a wide variety of devices
- Bar mount provides customisable installation
- Protect your device during off-road workdays
- Easy to install



ZAEBARTABLETMNT



ZAEBARPHONEMNT

\* iPhone and iPad are not included.





# CAMSO RD 4500

## THE NEXT GENERATION

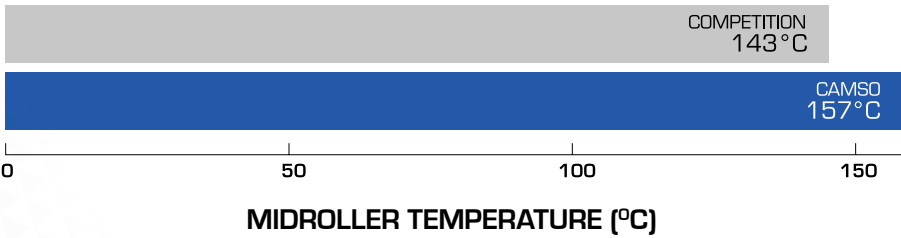
## OF ROADING TRACK

## FOR NEW HOLLAND

## MACHINERY

Get out in the field faster with the new Camso 4500 high-roading track. The Camso 4500 high-roading tracks allows you to travel at speeds of up to 40km/h on narrow tracks.

The Camso RD 4500 high-roading tracks are built to withstand a higher midroller temperature than competitor tracks to provide you with a durable track you can rely on in the field.



TRACK TECHNICAL SPECIFICATIONS:

				Treadbars				Drive Lugs	Carcass		
Part Number	Track Series	Product Family	Track Width (inches)	Qty	Height (inches)	Tip Width (inches)	Pitch (inches)	Qty	Plies	Main Cable (mm)	Thick-ness (mm)
51417218	RD 4500	High-roading	16	88	1.8	3.2	6	44	4	5.4	35
51417219	RD 4500	High-roading	18	88	1.8	3.2	6	44	4	5.4	35
51444172	RD 4500	High-roading	21	88	1.8	3.2	6	44	4	5.4	35
51417221	RD 4500	High-roading	24	88	1.8	3.2	6	44	4	5.4	35
51417222	RD 4500	High-roading	30	88	1.8	3.2	6	44	4	5.4	35



**CAMSO OFFERS THE BROADEST RANGE OF TRACK WIDTH FOR NEW HOLLAND TRACTORS: 16, 18, 21, 24 and 30 INCH**



## 1 High roading tread bar

New tread bar designed for high speed roading

- Enhanced tread bar shape and advanced rubber compound that allows for faster speeds

## 2 Longest lasting carcass

No material displacement during the manufacturing and curing process means:

- Uniform tension distribution that eliminates downtime due to carcass tear

## 3 4-Ply carcass

New carcass specifically designed for high speed roading

- Designed to endure higher internal temperatures during roading

## 4 Optimised drive lugs

Allows for maximum power transfer

- Drive lug geometry designed specifically for New Holland Tractor drive wheel

## Faster roading speeds, best-in-class performance, and durability

- Up to 50% faster than previous generations when travelling with implements.
- Reduced travel time on the road results in up to a 16% increase in field productivity.
- Maximised uptime, in the field and on the road.





# SOUCY TRACKS

## MANUFACTURING EXPERTISE

Soucy's know-how spans generations and they make their mark with the firm belief that the hardest work deserves the most reliable equipment.

### RUBBER TRACKS MANUFACTURING

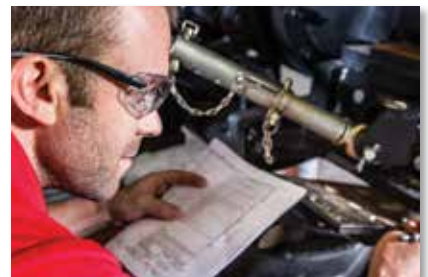
Rubber formulations developed by Soucy respond to the performance and durability requirements in farming applications. The rubber mixture, internal components as well as the track profile are engineered with only one objective in mind, which is to offer the best results for farmers, regardless of soil conditions.

### UHMW-PE MOULDING

Soucy developed expertise in UHMW-PE moulding. This material is ideal for manufacturing parts that are resistant to impact, corrosion, abrasion and wide temperature variations. This ultra-resistant plastic is also used to manufacture certain replacement wheels for track systems. Combined with rubber, UHMW-PE wheels are lighter, stronger and more efficient.

### QUALITY CONTROL

Each product goes through a rigorous development process. Concepts are validated with simulation software, in addition to real life field testing. As such, products meet the highest quality standards.



**Soucy**



With the increase in demand for agricultural tracks we are taking steps to ensure a consistent supply of stock is available. To achieve this, we have partnered with OEM manufacturer, Soucy to provide you with a greater range of rubber tracks for your equipment.

Founded in 1967, Soucy has more than 50 years of experience in the development, design and manufacture of rubber tracks for the industrial, recreational, and military vehicle markets.

In 2005, a line of track systems intended exclusively for agricultural equipment and vehicles was developed for the international market and was one of the very first track systems to be seen in the world of agriculture.



Soucy tracks undergo testing for more than 1,400 days.  
The result: the most durable and efficient track on the market.

## NEW DURABILITY STANDARD

The unique rubber mixture developed by Soucy, as well as the inner layers of the track reduce wear substantially. Combined with a chevron high above the industry average, the lifespan of the track profile is significantly extended.

## BEST DRIVING COMFORT

Soucy tracks are designed to minimise vibration, to provide the best riding comfort making driving more pleasant on long days in the field.

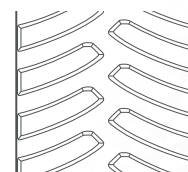
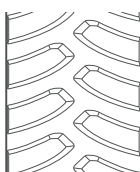
## FULL-WIDTH PERFORMANCE

The track profile responds to all types of terrain. In the field, traction is excellent to make travel easier regardless of soil conditions. On the road, Soucy tracks are incredibly effective thanks to their properties to minimise overheating so that you can count on transport speeds of up to 40 km/h.

## AVAILABLE WIDTHS

To meet the needs of crops in rows, and heavy-duty draft work, the track is available in two widths: 18 in (457.2 mm), 24 in (609.6 mm).

	ACE R18	ACE R24
Part Number	51417162*	51446937*
Application	Smarttrax T8 tractors	Smarttrax T8 tractors
Length	6,705.6 mm (264 in)	6,705.6 mm (264 in)
Width	457.2 mm (18 in)	609.6 mm (24 in)
Thickness	35.6 mm (1.4 in)	35.6 mm (1.4 in)
Profile Height	57.1 mm (2.25 in)	50.8 mm (2 in)
Steel Layer	4	4
Cable Diameter	5.2 mm (0.2 in)	5.2 mm (0.2 in)
Weight	311 kg (685.6 lbs)	390 kg (859.8 lbs)



Tracks qualify for 24 months or 1,000 hours warranty, for general agricultural application only.

\* Available April 2022.





# GENUINE LIGHTS

**NEW HOLLAND GENUINE LIGHTS ARE BUILT TO LAST  
AND ALLOW YOU TO WORK, DAY AND NIGHT.**

When spending long days out in the field, the last thing you want is an uncomfortable, impractical, or unsafe cabin. Now is the time to ensure your cabin is ready for the season.

Our high-quality, genuine lights will lower the overall cost of your machines with less downtime on replacing faulty or ill-fitting bulbs and improve your machine's durability with the proper visibility in and out of the field.

Our extensive range of lights will also optimise your performance throughout the season, ensuring that you can work safely, day and night.



Part Number	Description	Application
47926473	Lamp, turn/SMV	T9 450 - 700, T9000 series, TJ series
87475205	Lamp, rear, HID flood	T9 450 - 700, T9000 series
47923059	Lamp, work, oval, 30W, 60 degree flood	
84337818	Beacon, rotating Amber, flexible	T9 450 - 700
51485582	Beacon, LED lamp, Amber, flexible	



**47926473**



**87475205**



**47923059**



**84337818**



## AFTERMARKET LIGHTS



**9-64V LED WORK LAMP  
FLOOD BEAM 6000LM  
RECTANGULAR 6 X 10W LED  
NA72457**

- Delivers a powerful and high quality spread of intense, white light.



**9-64V LED WORK LIGHT  
FLOOD BEAM 1000LM OVAL  
2 X 5W WITH 2 LEDS  
NA72446**

- A powerful yet compact work lamp with two powerful 5W L.E.Ds ideal for close range illumination and where space is limited.



**9-64V LED WORK LAMP  
FLOOD BEAM 4000LM  
SQUARE 4 X 10W LED  
NA72453**

- Four powerful and ultra reliable 10W L.E.Ds deliver a high quality spread of intense, bright white light.



**DEUTSCH CONNECTOR  
ASSORTMENT  
NA57400**

- Contains a comprehensive assortment of Deutsch DT Series high end connectors including male and female terminals. Packed in a quality plastic case.



**AMP CONNECTOR ASSORT  
NA57500**

- Contains the full range of AMP Super Seal connectors including male and female terminals.



**2 WAY DTP DEUTSCH CON. KIT(1)  
NA57314BL**

- 2 Way (Male/Female) DTP Connector Kit with Wedges and size 12 Terminals. Amp Rating: 25A - Blister Pack.



**4 WAY DTP DEUTSCH CON. KIT(1)  
NA57316BL**

- 4 Way (Male/Female) DTP Connector Kit with Wedges and size 12 Terminals. Amp Rating: 25A - Blister Pack

**DTM DEUTSCH CONNECTOR  
ASSORTMENT  
NA57313**

- Contains a comprehensive assortment of Deutsch DTM connectors including male and female terminals. Packed in a quality plastic case.

**NARVA®**  
THE VISION TO GO FURTHER

**PROFESSIONAL POCKET  
LED PEN LIGHT  
TS300600**

- Bright and robust pocket pen light for quick and easy illumination of dark work areas
- Lighting modes: bottom light with direct beam and work light with wide flood beam
- Inbuilt belt clip with magnet



**PROFESSIONAL FOLDABLE  
LED SLIMLIGHT  
TS300606**

- Handy foldable pocket pen light for quick and easy illumination dark work areas
- Features three lighting modes: front fold out flood light with normal and eco modes, rear flood light and direct beam top light



**PROFESSIONAL FLOOD  
AND AREA WORKLIGHT  
TS300609**

- Multifunctional flood and area light suitable for use in workshops, building and camping
- Stepless dimmer switch easily adjusts the brightness from 60 - 1000 lumens
- Built-in power bank allows for the charging of smart phones and tablets



**PROFESSIONAL SLIMLINE  
LED HEADLAMP  
TS300607**

- Lightweight and easy to use LED headlamp allows for ease of lighting in dark areas while keeping your hands free
- Features three lighting modes: Eco, Normal and Sense Mode



**Sykes-Pickavant®**





# GENUINE PARTS

**GENUINE MIRRORS**

Your safety is our number one priority. That's why we offer an extensive range of high-quality, genuine mirrors. We want you to have clear vision throughout this year's seeding season, whenever or wherever you are working.

Part Number	Description	Application
87350494	Mirror assy, manual	T9 450 - 700
82015243	Mirror, replacement, manual	
87363066	Mirror assy, electric	
87531093	Mirror, replacement, electric	
47533453	Mirror assy, split powered/manual	
47589079	Mirror replacement, upper, large	
47589080	Mirror replacement, lower, small	



87350494



82015243



87363066



87531093



47589079



47589080





# MAKE ALL THE DIFFERENCE

## GENUINE GLASS

Visibility is key to your safety. All genuine New Holland windows are made from either tempered or laminated glass, offering greater stress and impact resistance, while providing more effective protection in the event of breakage.

Part Number	Description	Application
47898557	Front windshield	T9 450 - 700
47898563	Rear glass	

## GENUINE WIPERS

Part Number	Description	Application
84211825	Wiper blade, 22 in	T9 450 - 700
84394223	Wiper blade, 26 in	
84211824	Wiper arm, 20 in	
357662A1	Swiper switch, windshield	



357662A1

Part number for your machine not listed?  
Visit [mycnhistore.com](http://mycnhistore.com) to find you part number, fast.  
Or scan the QR code on page 2.



# CAB PARTS



## GENUINE DOORS

We've created an extensive range of genuine parts to keep your machine's doors in top condition. Built to the highest standards, our range of door parts will ensure that you can make the most of the season and avoid downtime when it counts.

Part Number	Description	Application
48145876	Door, LH	T9 450 - 700
47916477	Cab glass, LH door	
48145874	Handle, LH door	
48081022	Door seal, LH and RH	
48058157	Cab glass, RH door	

## GENUINE SEATS

Hard work does not need to be uncomfortable. This season, optimise your comfort by choosing our genuine seat parts. Our genuine seat parts are crafted by engineers, manufactured to meet strict standards, and backed by warranty. They are designed to help you maintain peak performance without ever compromising on comfort.

Part Number	Description	Application
84337502	Seat, operator, NH semi-active, heat	T9 450 - 670
84162205	Seat, operator, NH, cloth, air 2000	T9000 4WD
87453072	Seat, operator, NH, standard	TJ 275 - 500



## GENUINE SEAT COVERS

When choosing from our range of seat covers, you'll never need to pick between comfort and safety. Our seat covers are specifically designed to perfectly fit your New Holland equipment. All our seat covers are made with robust and comfortable materials, including high-quality 25mm sheepskin. They also undergo strict quality control, ensuring that you can purchase a trusted product at a great price.

### Sheepskin for enclosed cabs:

- high-quality 25mm sheepskin
- cool in summer, warm in winter
- lasting quality.

### SuperTuff canvas for open cabs:

- PVC backed
- reinforced stitching
- waterproof
- tailor-made to fit
- flame retardant.

### Rough Country canvas for enclosed cabs:

- foam padded
- reinforced stitching
- waterproof
- UV stabilised
- tailor-made to fit
- flame retardant.







*Improve  
your mobile coverage.*

with  
CEL-FI GO Mobile smart signal repeater packs



## CEL-FI GO TELSTRA SMART SIGNAL REPEATER + CLR8-5G ANTENNA

### AXGO T +ANT

- This kit features the 73cm CLR8-5G high quality 7/9 dBi spring base antenna.
- Ideal for highway and all on/off-road communications.

### SPECIAL OFFER

Free two years extended warranty for a total of 4 years  
(VALUED AT \$130)



## MINI COMPACT UHF CB RADIO WITH 3.1DBI ANTENNA AXMACHINERYPACK

- The Machinery Pack is the ideal kit for construction & agricultural machinery.
- It comes with the PRO901 Mini compact, rugged UHF CB radio and 3.1dBi Antenna Kit.

**audioXtra**  
AUTOMOTIVE SOLUTIONS



## YOUR IDEAL SAFETY COMPANION OUT IN THE FIELD



For over 60 years, GME has been an industry leader in the RF communication technology space. GME remains a family-owned private company, and is proudly 100% Australian. GME is the only Australian manufacturer of UHF CB radios and emergency beacon products, with an ongoing focus on innovation and technology leadership. GME prides themselves on engineering and manufacturing high quality, market-leading products to suit the specific requirements of our customers.

### GPS PERSONAL LOCATOR BEACON MT610GAUS

- Compact, Lightweight Design
- IP68 Ingress Protection
- Integrated 72Ch GPS Receiver
- 7 Year Battery Life
- 121.5MHz Homing Transmitter
- Cospas-Sarsat Certified (Class 2)
- Easily Deployed in an Emergency
- Inherently Buoyant



### XRS™ CONNECT IP67 UHF CB RADIO WITH BLUETOOTH® & GPS

#### XRS-390C

- Built-in GPS Receiver
- IP67 Ingress Protection: Waterproof & Dustproof
- MIL-STD 810G
- 5 Watt Transmission Power
- Professional-grade IP67 OLED Speaker Microphone
- 2 Watt Front-facing Speaker
- Bluetooth® Wireless Technology – Smartphone Control
- XRS™ Connect – Smartphone Application





# REMAN ROLLER WHEEL KITS

## REMAN UNDERCARRIAGE WHEEL REPLACEMENTS

### THE REVOLUTIONARY COST-SAVINGS TECHNOLOGY FOR ROLLER AND IDLER WHEELS



#### NO BOND FAILURES GUARANTEED

- Proprietary bonding technology that resists heat and shear force to prevent debonding
- 12-month warranty

#### LONG WEAR-LIFE

- Polyurethane compound engineered to generate less heat, reduce chunking, and provide the highest cut and tear resistance

#### RESIST THE ELEMENTS

- Unlike rubber, polyurethane is resistant to oils, UV, weak acids, diesel fuel, moisture, and more

#### EXTEND RUBBER TRACK LIFE

- Lower operating temperatures reduce rubber track deterioration
- Tough polyurethane will not capture debris or score the track

#### Quality you can count on!

CNH Industrial genuine remanufactured parts are completely disassembled, inspected, and reassembled to the latest OEM specifications.

#### SAVES TIME

Everything you need is in the kit, no waiting for missing parts

#### SAVES COSTS

Cost less than purchasing individual parts

#### SAME QUALITY

Built to latest OEM specifications



## THE REMAN ROLLER WHEEL KITS ARE NOW AVAILABLE!

This kits will include everything you need to replace a roller wheel and they are competitively priced compared to buying each component separately.

#### KIT INCLUDES:

- roller wheel
- cup, seal
- seal assembly
- 2 bearing cups
- 2 taper roller bearings
- bearing retainer and bolt
- clear cap with o-ring, plug and snap ring.

Part Number	New Holland Model
48029054R	CR combines
48029056R	T8. Smarttrax Tractors



#### [CLICK HERE](#)

to match your roller wheel kit with your New Holland model tractor



# WHY CNH INDUSTRIAL REMAN?



We've invested in the most sophisticated precision tools and machinery for our remanufacturing processes. As you read through the engine highlights and learn more about the stringent quality processes we've put in place, you will feel confident in our remanufactured engines.

**We continue to offer a 24-month warranty on complete reman engines installed by authorised New Holland dealers.**



**We have a broad range of reman parts available, you can buy with confidence knowing that our reman parts:**

- are competitively priced
- meet the latest original equipment manufacturer (OEM) specifications
- meet or exceed OEM warranties
- offer less downtime with installation options.

## Testing and Quality Measures

- Replacement level engines with fuel systems undergo dyno testing to ensure proper oil pressure, exhaust temperature, horsepower, water and oil circulation, and overall functionality.
- Long block engines are spin-tested to confirm compression and oil pressure.
- Fluorescent magnetic particle inspection is used to identify surface flaws.
- Sediment testing confirms all remanufactured parts are clean for maximum operating life.
- Air decay testing will detect any fuel, oil, or water leaks.





# BEYOND A REBUILD

## A better process results in a better product

- **Camshafts** – Camshafts are examined and straightened, and all main journals and lobes are checked. Those that pass are machined to ensure proper valve lift and timing; those that do not meet specs are replaced with new.
- **Connecting Rods** – Connecting rods are thoroughly cleaned and checked for straightness; those that do not meet specifications are replaced with new. Both crank and piston pin bores are checked for size, and 100% new bearings and bushings are installed.
- **Crankcases** – Machining is performed to ensure all bores meet exacting dimensional specifications. Cylinder bores are honed with the latest technology. This level of precision ensures that bores meet EPA tier emission requirements. Wet sleeve engine sleeves are replaced 100% with new.
- **Crankshafts** – Crankshafts are dimensionally and structurally inspected, then ground and micro-polished to exacting tolerances.
- **Cylinder Heads** – All cylinder heads are inspected for cracks; those that pass are milled to ensure flatness. Valve seats and guides are machined with precision equipment to ensure proper valve seating, recession, clearance and runout.
- **Cylinder Sleeves** – Engine with wet sleeves are replaced 100% with new. In dry sleeve engines, cylinder bores are enlarged and honed. In the repair process, a liquid nitrogen cooling tank contracts cylinder repair sleeves before installation, so once set, they expand to a permanent, pressed fit.
- **Painting** – Guards, plugs, and grease protectant are used to avoid painting active surfaces. This prevents system contamination, misalignment, or leak-causing gaps created from melting or flecked paint.







Well-looked after machinery and equipment will help to get the most out of the season and minimise downtime. When it comes to maintenance and repairs, reman parts are a high quality and cost-effective option.

On average, our remanufactured parts are **30% cheaper** than the equivalent new part. Reman parts also outperform used or rebuilt parts, making them an option you can trust to perform when it counts.

Part number	Description	Application
DRIVELINE		
87546434R	Reman-transmission	T9040, T9050, T9060
87546435R	Reman-transmission	
84317503R	Reman-transmission	T9.615, T9.670
ELECTRONICS		
84348127R	Reman elect control	T9.450, T9.505, T9.560, T9.615, T9.670
47608842R	Reman-module	
84246892R	Reman-module	T9.450, T9.505, T9.560, T9.615, T9.670, T9040, T9050, T9060
48036776R	Reman elect control	
87475204R	Reman elect control	T9.450, T9.505, T9.560, T9.615, T9.670, T9040, T9050, T9060
47416081R	Reman elect control	
84222524R	Reman-blower	T9.505
47933756R	Reman elect control	
87663947R	Reman-blower	T9040, T9050, T9060
47372893R	Reman-joystick	
ENGINE COMPONENTS		
47879369R	Reman-cylinder head	T9040, T9050
5801931144R	Reman-water pump	
FUEL		
504066263R	Reman-fuel inj pump	T9040, T9050
504287108R	Reman-fuel injector	T9050
HYDRAULICS		
87308196R	Reman-hyd pump	T9.450, T9.505, T9.560, T9.615, T9.670, T9040, T9050, T9060
87308197R	Reman-hyd pump	
47639533R	Reman-hyd pump	T9.505
47528844R	Reman-hyd pump	T9.615, T9.670
432244A3R	Reman-hyd pump	T9040, T9050, T9060
436536A1R	Reman-valve hyd	T9.615, T9.670, T9050, T9060
47479826R	Reman-valve hyd	T9.450, T9.505, T9.560, T9.615, T9.670
ROTATING ELECTRICAL		
504338098R	Reman-alternator	T9.450, T9.505, T9.560, T9.615, T9.670, T9040, T9050, T9060
5801711014R	Reman-starter	T9040, T9050
TURBOCHARGER		
504171476R	Reman-turbocharger	T9040, T9050



**84348127R**



**47608842R**



**504066263R**



**504287108R**



**432244A3R**



**5801711014R**



**504171476R**



# REMANUFACTURED PARTS FOR NEW HOLLAND TRACTORS

Right now, there are more reasons than ever to choose New Holland remanufactured parts for your equipment. From more part choices to less downtime during installation, you're sure to appreciate the unique benefits of choosing Reman.

## SIGNIFICANT SAVINGS

New Holland remanufactured parts are competitively priced, offering great value while ensuring peak performance.

## MORE CHOICES

Every day we look to add even more parts to our Reman range. This expanded offering gives you more options for your equipment needs.

## LESS DOWNTIME WITH INSTALLATION OPTIONS

Many New Holland remanufactured parts are ready to install, so our service technicians can spend less time completing repairs or shopping for installs. The result? Quicker turnaround and a whole new level of equipment uptime for you.



## HIGHER VALUE

It's a fact. When you install our parts in your equipment, you can expect increased resale value.

## OEM PERFORMANCE

New Holland remanufactured parts are engineered to deliver like-new performance that meets stringent New Holland performance specifications.

## QUALITY

New Holland remanufactured parts are completely disassembled. All parts are thoroughly inspected and reassembled to the latest OEM specifications.

### ENGINES

Long block  
Short block  
Replacement engine

### ENGINE COMPONENTS

Cylinder head  
Crankshaft  
Camshaft  
Crankcase  
Connecting rod  
Water pump  
Oil cooler

### ELECTRONICS

ECU  
Joystick  
Monitor

### FUEL

Fuel injection pump  
Fuel injector

### DRIVELINE

Axle  
Clutches  
Final drive  
Gearbox  
Transmission  
Torque converter

### ROLLER WHEEL

### ROTATING ELECTRICAL

Alternator  
Starter motor

### AC COMPRESSOR

### TURBOCHARGER

### BLOWER MOTOR

### HYDRAULICS

Hydraulic pump  
Hydraulic cylinder  
Hydraulic motor



**BREATHE NEW LIFE INTO YOUR MACHINERY WITH REMAN PARTS**



**YOU'RE NEVER  
TOO YOUNG  
TO OWN A  
NEW HOLLAND!**



**[CLICK HERE](#)**  
to find your local  
New Holland dealer  
to see our toy range  
in person!





**T7040 Pedal Tractor with Trailer**

**73322347**





# WEAR IT LOUD AND PROUD!

Visit your local New Holland  
dealer to shop their in-store  
collection today

## NEW HIGH VIS RANGE HAS JUST LANDED!

From t-shirts to jumpers to hats, we have the high vis apparel you need to stay safe on the job. Made from high-quality materials that are durable and comfortable, you can rely on the New Holland high vis range to keep you looking professional for years to come.



## APPAREL





## HEADWEAR



**Belingo cap**



**Illinois cap**



**Windrower cap**



**Harvester cap**



**Ladies pink cap**



**Stockyard cap**



**Navy liquid metal cap**



**Hinterland cap**



**Rio cap**

## ACCESSORIES



**Silicone sleeve  
drink bottle**



**San Diego  
drink bottle**



**Picnic blanket**



**Explorer backpack**



**Zenith sports bag**

## KIDS CORNER



**Kids colouring  
book**



**Kids backpack**



**A5 Sticker  
pack**

## PLUSH TOYS



**T8 tractor plush**



**T9 tractor plush**



**TT4 tractor plush**

## Bluetooth® speaker

The New Holland Bluetooth® speaker offers high definition stereo sound and is compatible with all mobile devices that support Bluetooth®. Its compact and sleek design means that it can be used anywhere without compromising on the sound quality.

### FEATURES INCLUDE:

- wireless connectivity range of over 10 meters
- can be used with an audio cable
- three to four hours of playing time
- easy to recharge with a laptop, power bank or USB mains charger
- microphone for phone and conference calls
- play, pause and switch tracks directly from the speaker.



**CLICK HERE**  
to shop the whole range  
on the New Holland Store



# THE STRENGTH BEHIND YOU



THE STRENGTH BEHIND YOU

[newholland.com/au](http://newholland.com/au)

NEW HOLLAND  
31-53 Kurrajong Road, St Marys NSW, 2760, Australia



New Holland Agriculture reserves the right to make improvements in design and changes in specifications at any time without notice and without incurring any obligation to install them on units previously sold. The specifications, descriptions and illustrative material contained herein are as accurate as known at time of publication but are subject to change without notice. Illustrations may include optional equipment and accessories and may not include all standard equipment.