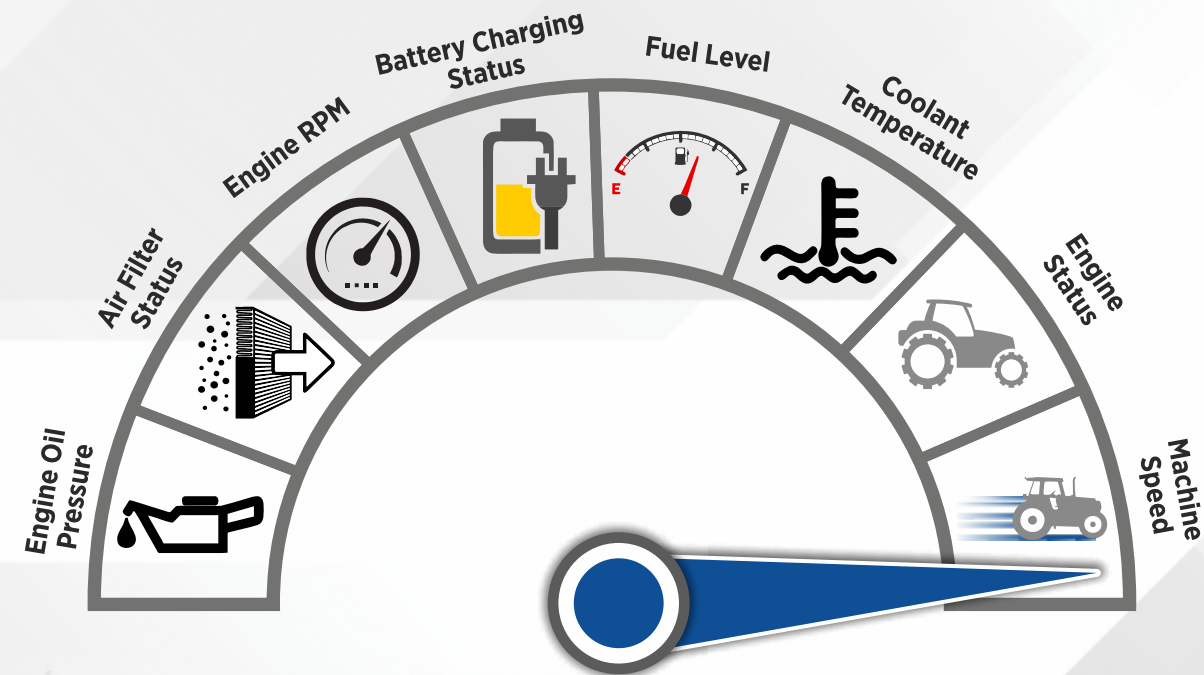


## Live Dashboard

Feel like a live instrument cluster of machine

📍 Live updates of critical parameters shown on App screen



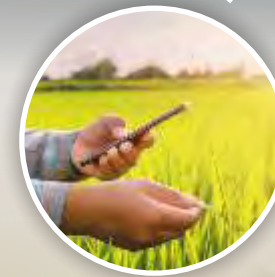
**CNH INDUSTRIAL (INDIA) PVT. LTD.** {FORMERLY KNOWN AS NEW HOLLAND FIAT (INDIA) PVT. LTD.}  
Plot No. 03, Udyog Kendra, Greater Noida, District Gautam Budh Nagar, Uttar Pradesh.

**TOLL-FREE NO.**  
**1800-419-0124**  
[www.newholland.com/in](http://www.newholland.com/in)

**TRACTOR RANGE**  
**35-90 HP**

Leaflet/English/Oct2019

## New Holland SKY WATCH



This **Tractor**  
**Speaks**

"New Holland Skywatch system enables you to Track and Trace your machine anywhere anytime, with CNHi Teleconnect app and SMS services you can have live engine updates, important alerts, Geofencing, Fuel and Battery safety, etc."



TRACK & TRACE PROACTIVE ALERTS MACHINE SAFETY PERFORMANCE ENHANCEMENT LIVE DASHBOARD

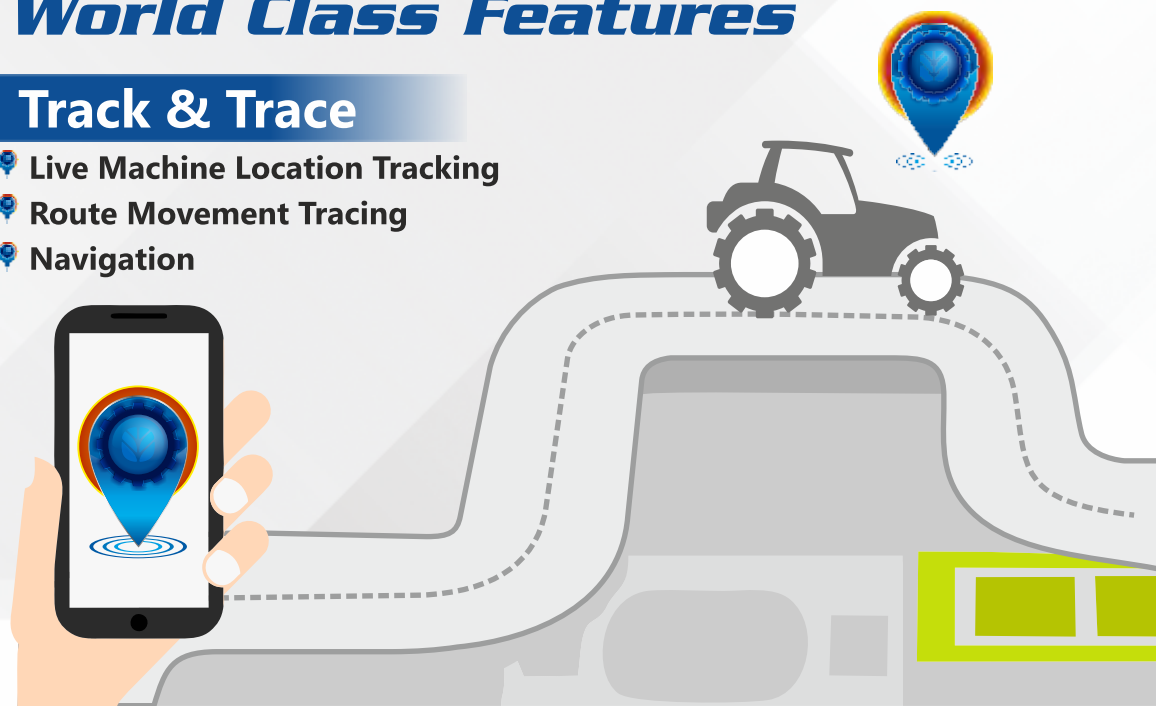




## World Class Features

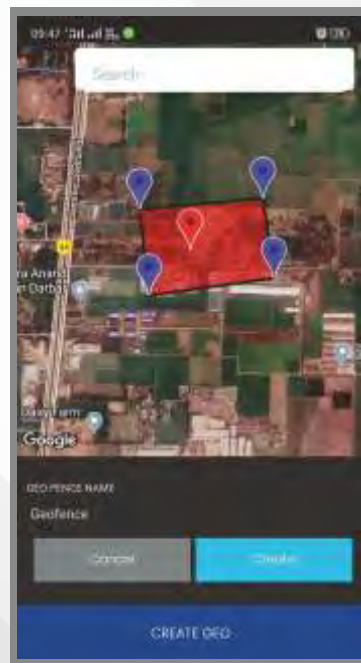
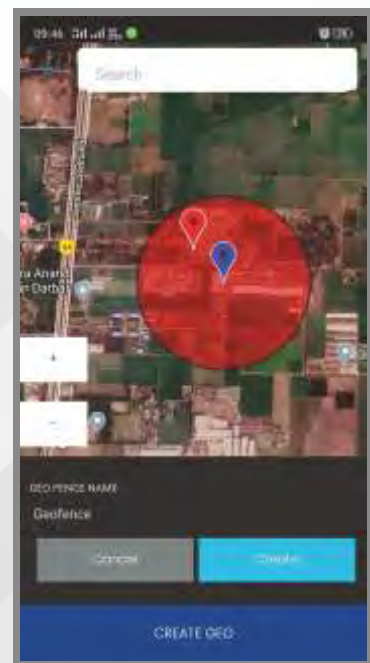
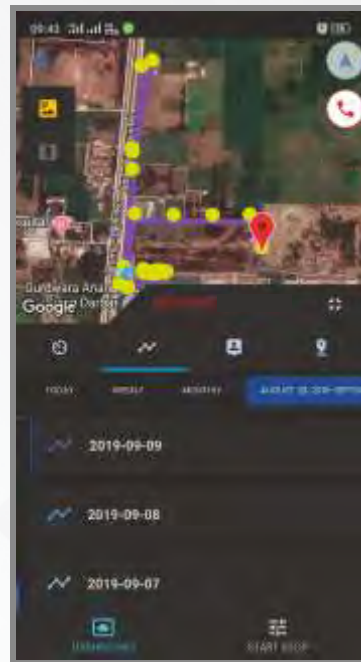
### Track & Trace

- Live Machine Location Tracking
- Route Movement Tracing
- Navigation



### Machine Safety

- Fuel Pilferage Alert
- Battery Disconnection Alert
- Machine Moving Alert
- Geofencing
- Device Tamper Alert



### Proactive Alerts - Max Productivity, Min Downtime



#### 9 Critical Alerts

- High Engine Temperature
- Air Cleaner Choke
- Low Engine Oil Pressure
- Low Brake Oil Level
- Battery not Charging
- Engine Prolong idling
- High Engine Speed
- Low Fuel Level
- Proactive Service Reminders

### Performance Enhancement

- Machine utilization report
- Area computation
- Service Report

