

TK4

TK4.80 | TK4.90 | TK4.100



Put your trust in New Holland tractor DNA.

All TK4 models have evolved to offer the best stability, performance and ease of operation in their class and provide maximum productivity, comfort and safety in extreme terrain. New Holland's TK4 range includes cab versions available on selected models. SmartTrax™ rubber tracks and Steering-O-Matic™ Plus ensure the ultimate driving experience, and make it even easier to fully exploit the tractor's impressive capabilities.

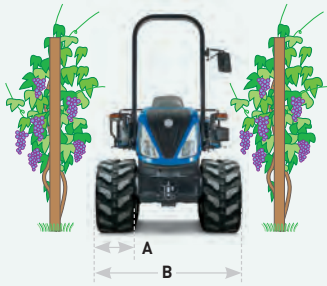
The evolution of 90 years production experience

Over 90 years production experience is built into the new TK4 range and it is this long and proven heritage that ensures these versatile tractors can meet the diverse needs of specialist growers, farmers and contractors the world over.



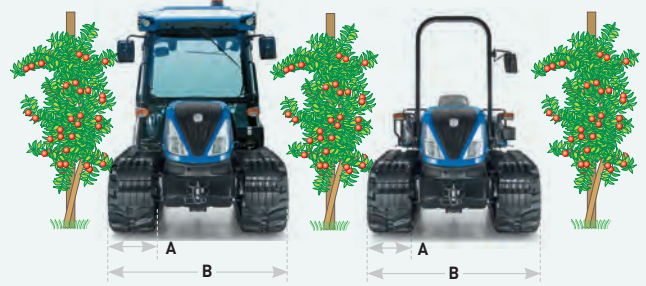
A model, width and track size for every application

The new TK4 range covers all bases, providing a model to suit every application. A total of fifteen models from 74 - 99hp confirm New Holland's undisputed leadership in the segment. Choose from the wide track Open Field or Mountain models for more general applications featuring a choice of cab or ROPS. For the speciality fruit and wine growers where size and width are limiting factors, there are three ROPS models available in each of the F, N and V configurations, all purpose designed for the most demanding orchard or vineyard work.



Narrow models		TK4.80V TK4.90V TK4.100V	TK4.80N TK4.90N TK4.100N	TK4.80F TK4.90F TK4.100F
Track shoe width (A)	mm	250-270	300-310	300-350
Width (B)	mm	1150-1170	1300-1310	1400-1450*
Power	hp	75/85/99	75/85/99	75/85/99
Wheelbase	mm	1341	1341	1341
Weight	kg	3505	3725	3725

* SmartTrax option available



Open Field models		TK4.90 TK4.90 Cab	TK4.90M TK4.90M Cab	TK4.100 TK4.100 Cab	TK4.100M TK4.100M Cab
Track shoe width (A)	mm	310-350	350-400	310-350	400-450
Width (B)	mm	1410-1450	1650-1700	1410-1450	1700-1750*
Power	hp	85	85	99	99
Wheelbase	mm	1586	1586	1656	1656
Weight ROPS/Cab	kg	4325/4900	4525/4900	4325/5100	5075/5300

* SmartTrax option available



Setting new standards for comfort and ergonomics.

The new TK4 models benefit from an optional new air suspended seat and purpose-developed platform matting to protect the operator from heat, noise and vibration. A new firewall design ensures the flow of hot air and dust from the engine bay does not reach the operator platform, enhancing driver comfort. Open Field models boast 'silent block' isolation mounts that reduce vibration and heat reaching the operator, with the added benefit of decreasing the transmission of mechanical noise from the engine and transmission.

The only factory fitted cab on crawlers

The optional cabbed Open Field models further enhance operator comfort, the air conditioned cab and fully adjustable, optional air seat make long days fly by.





SmartTrax™ rubber track system comfort

The new system greatly boosts comfort. On the field as well as on the road, low vibration and noise levels make for productive working days.



New air suspended seat

- A new air suspended seat option is available on all models offering superior comfort and isolation from vibrations
- The deluxe seat option features a tilting base to provide a level platform when working on sloping terrain
- Additional padding and a wide adjustment range ensure maximum comfort during long working days



Modern and aggressive styling

- New signature New Holland bonnet styling brings the TK range in line with the rest of the New Holland family
- The restyle brings with it improved front and side visibility



High comfort operating area

- The side consoles on all TK4 models feature wrap-around grab rails to enhance operator security when working on lateral slopes
- The low seating position helps reduce the centre of gravity and maintain operator confidence



Cab filters

Cabin filter is now located above the front windscreen, away from the rising dust at the rear of the machine.



Improved serviceability

Cab air filters, previously mounted on the two sides, have been replaced by a single front filter. The new position, less exposed to dust and dirt raised by the tracks, allows operators to work in a cleaner zone. Also the cleaning of the AC unit is much easier: thanks to the new opening roof panel designed for quick and easy access.

More power, more capacity, more performance.



The TK4 range now feature the proven 3.4 litre common rail, four cylinder F5C engines developed by FPT Industrial that fully comply with Tier 4A emissions regulations. Developing 74 - 99 hp, and with a maximum torque figure of up to 420Nm, productivity is guaranteed day-in and day-out, up hills and down dales. The entire TK4 range employs Cooled Exhaust Gas Recirculation (CEGR) technology for Tier 4A compliance.



Powered by FPT Industrial

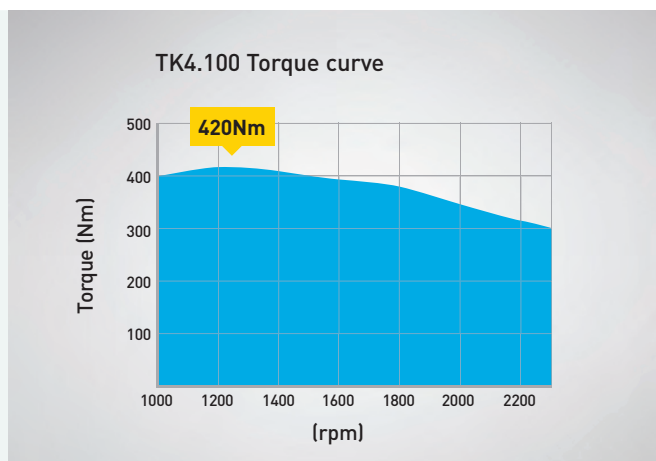
New Holland are not going it alone when it comes to Tier 4 technology, they can draw on the experience of their in-house engine development specialist: FPT Industrial.

Pioneers: Common Rail technology developed by FPT Industrial at their R&D excellence centre in Arbon, Switzerland in the 1980s and brought it to the masses in 1997 on the Alfa Romeo 156. They were the very first to introduce it on agricultural machines on the TS-A tractor. Pioneering. Always.

Cleaner: For the fifth consecutive year, CNH Industrial has topped the Dow Jones Sustainability World and Europe Indexes for the Industrial Engineering sector. Cleaner. Everywhere.

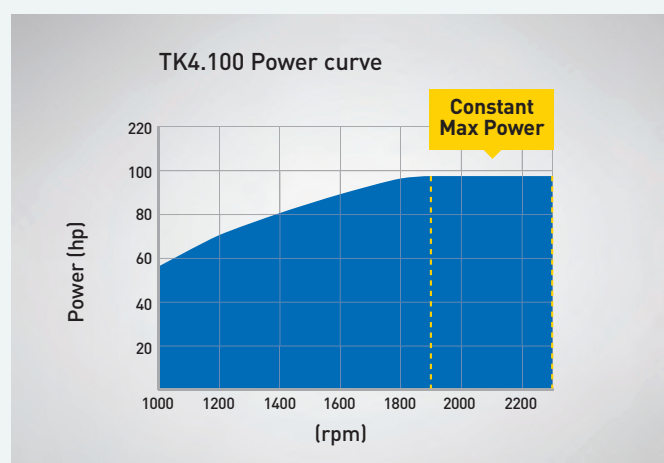
Proven: FPT Industrial have already produced over 345,000 F5C engines since the launch in 2007. Reliability. Confirmed.





Sustained productivity in all conditions

Sustained productivity in all conditions "Dozer Mode". Here at New Holland we're passionate about transient response and it's your productivity guarantee. Put simply, when you ask for more, your reactive engine and its enormous 35% torque backup gives it to you. In practice, when you're working in demanding conditions, for example while using a dozer blade you'll maintain forward speed even when sticky spots or uneven ground are encountered.



Efficient response

Common Rail electronically controlled engines employ precision fuelling technology for greater responsiveness as well as fuel efficiency. Put simply, you maintain performance whilst controlling your fuel bills. Furthermore, maximum power is achieved at a mere 1900rpm and is available right up to 2300rpm, the most frequently used working range, for improved productivity in all applications. A flatter maximum power curve throughout the optimum working range further boosts your operational flexibility.



More time in the field, less time in the yard

Advanced engineering design means lower maintenance demands. All TK4 models benefit from New Holland's industry leading 600-hour service intervals, and they all run on easily available standard oils. Choose New Holland to save money, downtime and to protect the environment.

Safe productivity.

TK4 tractors are fitted with New Holland's patented Steering-O-Matic™ Plus system. Steering-O-Matic Plus is the industry-leading technology that offers significant improvements in terms of safety, increased productivity and ease of operation, as the operator can manage the hydraulic controls with their other hand. The constant mesh transmissions used on TK4 tractor models offers a choice of eight carefully chosen forward ratios, while for low speed work, a creeper transmission is available. With unrivalled operator comfort, long days at the wheel are less tiring. New Holland, always leading the way in crawler tractor innovations.





Single lever steering and drive control

- The optional single lever Steering-O-Matic Plus control system requires only the thumb and index finger to steer left and right
- Clutch engagement and direction changes are also controlled by the lever by pushing or pulling forwards or backwards
- Upper and lower handrail supports ensure comfortable and safe operation
- One-handed steering enables the drivers free hand to operate the controls
- Steering-O-Matic Plus design principle eliminates the need for the traditional long clutch lever to engage drive, thus de-cluttering the operator platform
- Precise and accurate turning is essential in high value crops and steep terrain



Evenly spaced forward ratios

- TK4 standard constant mesh transmissions features eight forward and eight reverse speeds - optional creeper transmission is available across the range and increases the number of forward speeds to 16, with eight reverse speeds
- Minimum creeper speed is as low as 0.4 kph
- A convenient fender mounted shuttle lever is standard on the 8x8 transmission and enables quick direction changes



Converting engine power Into working power.

The TK4 range offers easy to use performance. The open centre hydraulic system is proven and robust. The fully independent PTO has low power loss so more engine power can be transmitted to driven implements. Add high traction, and few tractors can match a TK4 for overall in-field efficiency and productivity.

Stronger swinging drawbar

- The new swinging drawbar is 7cm longer than previous models and is now engineered to take a vertical load of 600kg
- The vertical load capacity is useful in situations where weight is transferred from the implement





Powerful hydraulics

- Dual pump open centre hydraulic system is featured on all TK4 models to supply the hydraulics and the steering demand separately
- On the larger Open Field models, up to 80l/min hydraulic pump capacity is achieved
- A capable 35.5 l/min hydraulic flow is standard on Speciality models



All-purpose remote valves

- Grouped together on the rear right side, the colour coded remote valves enable hassle free coupling
- Up to four rear remote valves can be specified on Speciality models
- Up to five rear remote valves can be specified on larger Open Field models
- A flow control valve can be specified on one remote for implements that require low volume oil flow
- Flow control valve can vary the oil flow between 9 - 45 l/min



Robust PTO

- Selectable two speed PTO is standard on all models in the TK4 range
- 540/540E speeds are available across the range
- On Open Field models, a 540/1000 speed option is available
- PTO engagement is via a robust front console mounted hand lever
- Power loss is minimal through the low absorption PTO drive system
- A durable 280mm PTO clutch controls drive engagement



Lift-O-Matic™ Plus system for speed and precision

- Lift-O-Matic Plus allows you to completely raise or lower implements while maintaining position and draft settings
- Minor draft adjustments can be made with just a push or a pull of the lever to fine tune your position



Improved ballasting

- A new design of front axle casting allows better front ballasting options
- Front wafer weights can be mounted on either side of the chassis rather than out front
- Up to 500kg of additional ballast can be mounted on Open Field models
- Up to 200kg of additional ballast can be mounted on Speciality models
- The compact ballast mounting design results in an improved angle of approach when ascending steep slopes
- Stronger front axle capacity means larger front mounted implements can be mounted such as pre-pruners

Rubber flexibility, steel durability.

New Holland TK4 N, F and larger Open Field M models be specified with the exclusive SmartTrax™ rubber track system. Not to be confused with existing rubber track designs, SmartTrax are formed around an extremely robust steel skeleton with a spiral steel cord reinforced rubber track. Delivering outstanding traction, lateral grip and a large contact patch to minimise compaction, SmartTrax are also exceptionally durable, with a service life in excess of 3,000 hours.

Smooth transport

- SmartTrax equipped crawlers eliminate the requirement to use a separate tractor and trailer for road movements between fields
- Damage to farm tracks, yards and orchards is also reduced





Unique track versatility

- New Holland SmartTrax have a unique interchangeability feature
- Depending on the requirement, the rubber track belts can be swapped for a steel track alternative
- **Only 3 hours are required to change tracks from rubber to steel**



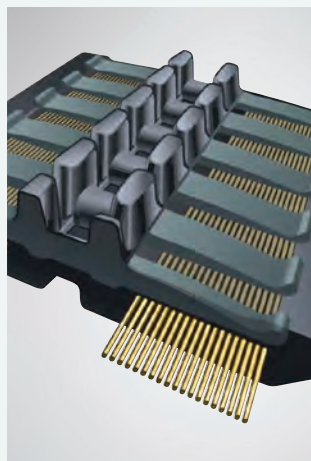
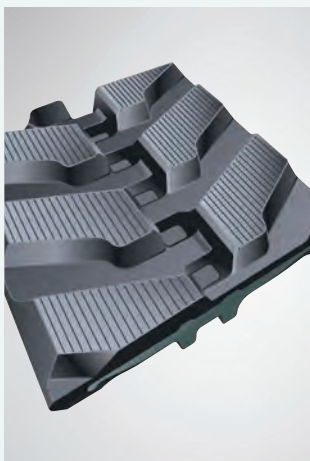
Safe on slopes

- The 'Fishbone' tread pattern of SmartTrax delivers enhanced lateral grip that is superior to conventional steel track
- A TK4 with SmartTrax delivers superior security in extreme terrain than a conventional steel tracked or wheeled tractor



Tight turning

- SmartTrax reduce surface damage, enabling tighter turns than when running on a steel track
- Tighter turns allow shorter headlands and easier maneuvering of trailed implements

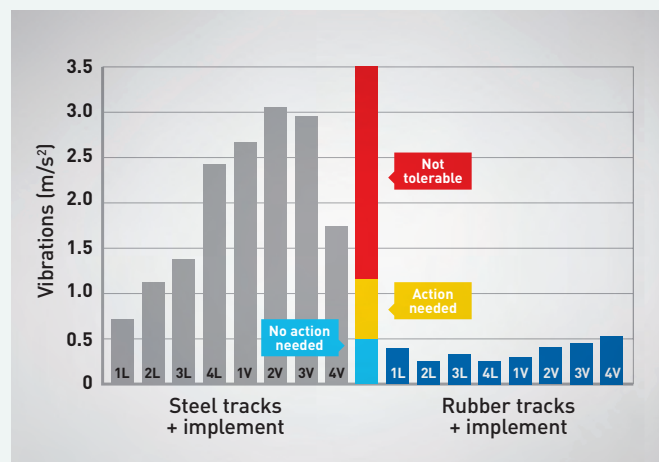


Superior flotation

- Crawler tractors deliver superior flotation than wheeled tractors in all conditions
- SmartTrax equipped TK4 models have a wide footprint to spread the weight of the tractor more evenly
- SmartTrax rubber tracks are available in belt widths of 300mm on Speciality models and 450mm on Open Field models

Durable track construction

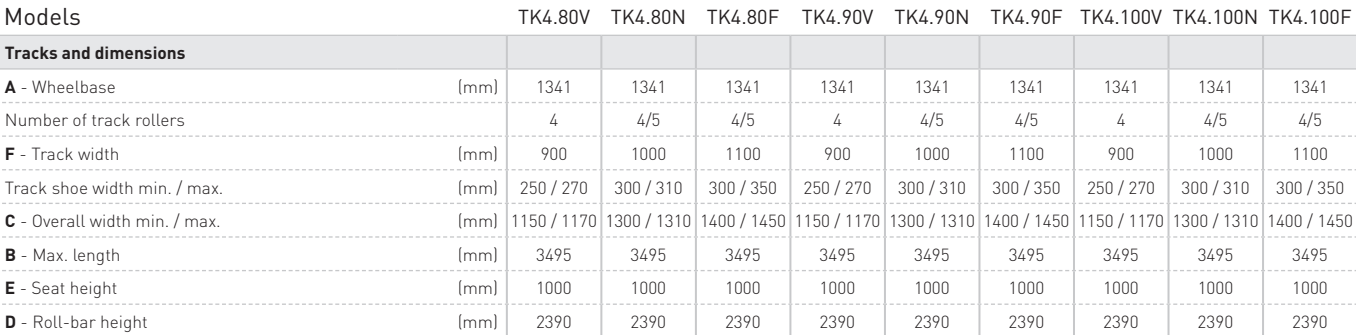
- SmartTrax combine spiral steel cord reinforced rubber with an exceptionally strong steel metal skeleton
- These tracks are extremely durable with a service life, subject to conditions, in excess of 3,000 hours.



Low vibration levels

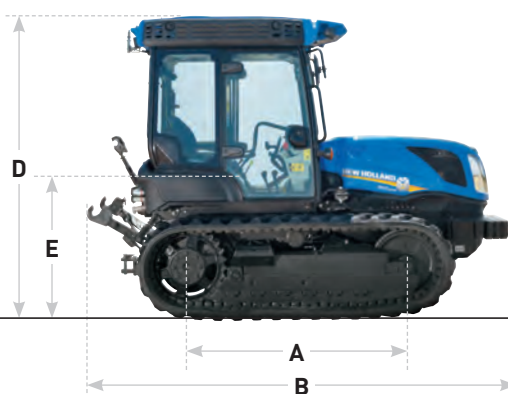
- The inherent suspension properties of SmartTrax significantly reduce vibration levels to under 0.5 m/s²
- TK4 crawlers surpass the ISO 2631 standard that relates to human exposure to whole-body vibration and shock

● Standard ○ Optional – Not available * Developed by FPT Industrial



Models	TK4.90	TK4.90M	TK4.100	TK4.100M
New Holland Engine*				
No. of cylinders / Capacity (n° / cm³)	F5C 4 / 3400	F5C 4 / 3400	F5C 4 / 3400	F5C 4 / 3400
Emissions level Tier/Stage	4A/3B	4A/3B	4A/3B	4A/3B
Turbocharged intercooler	●	●	●	●
Approved biodiesel blend	B20**	B20**	B20**	B20**
Rated engine power ISO TR14396 - ECE R120 [kW/hp(CV)]	63/85	63/85	73/99	73/99
Max. torque ISO TR14396 (Nm)	351	351	407	407
Torque reserve (%)	34	34	34	34
Horizontal exhaust	●	●	●	●
EGR system	●	●	●	●
Cooling	Liquid	Liquid	Liquid	Liquid
Standard diesel tank capacity [Litres]	96	96	96	96
Transmission				
Steering-O-Matic™ Plus handle with overcentre engagement	●	●	●	●
Clutch type	Single disc	Single disc	Double disc	Double disc
Shuttle [FxR]	8x8	8x8	8x8	8x8
Minimum / Maximum speeds [kph]	1.7 / 12	1.7 / 12	1.7 / 12	1.7 / 12
Creeper gearbox [FxR]	16x8	16x8	16x8	16x8
Minimum / Maximum speeds [kph]	0.4 / 12	0.4 / 12	0.4 / 12	0.4 / 12
Steering				
Steering-O-Matic™	●	●	●	●
Steering-O-Matic™ Plus	○	○	○	○
PTO				
Standard speed [rpm]	540/540E	540/540E	540/540E	540/540E
Optional speed [rpm]	–	540/1000	540/1000	540/1000
Hydraulics				
Max lift capacity at ball ends [kg]	3,720	3,720	3,720	3,720
Flow rate [lpm]	35.5	45	45	45 [80 optional]
Max number of rear remote valves	5	5	5	5
Operator comfort				
SmartTrax™	–	–	–	○
Operator environment				
Safety frame with folding type	●	●	●	●
Canopy roof	○	○	○	○
Cab with FOPS	○	○	○	○
Air seat	○	○	○	○
Weights				
ROPS version	4325	4525	4325	5075
Cab version	4900	5100	5100	5300

● Standard ○ Optional – Not available * Developed by FPT Industrial ** Conditions apply



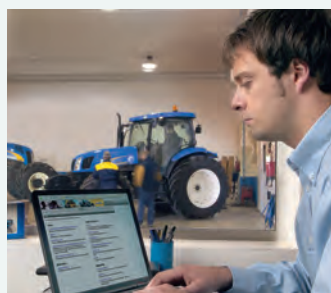
Models	TK4.90	TK4.90M	TK4.100	TK4.100M
Tracks and dimensions				
A - Wheelbase [mm]	1586	1586	1656	1656
Number of track rollers	5	5	6	6
F - Track width [mm]	1100	1300	1100	1300
Track shoe width min. / max. [mm]	310 / 350	350 / 400	310 / 350	400 / 450
C - Overall width min. / max. [mm]	1410 / 1450	1650 / 1700	1410 / 1450	1700 / 1750
B - Max. length [mm]	3777	3777	3777	3777
E - Seat height [mm]	1040	1040	1040	1040
D - Cab height [mm]	2303	2303	2303	2303

New Holland Top Service: customer support and customer information.



Top Availability

If you need information, please contact your local New Holland dealer.



Top Speed

Express parts delivery: when you need it, where you need it!



Top Priority

Fast-track solution during the season: because your harvest can't wait!



Top Satisfaction

We drive and track the solution you need, keeping you informed: until you are 100% satisfied!

Service Plus – because your peace of mind is priceless

Service Plus coverage provides owners of New Holland agricultural machinery with additional cover on expiry of the manufacturer's contractual warranty. Please ask your dealer for more details.



AT YOUR OWN DEALER



www.newholland.co.nz



The data indicated in this folder are approximate. The models described here can be subjected to modifications without any notice by the manufacturer. The drawings and photos may refer to equipment that is either optional or intended for other countries. Please apply to our Sales Network for any further information. Published by New Holland Brand Communications. Bts Adv. - Printed in New Zealand - 03/20 - 180002/NZ