

# New Braud 9090X Olive





# New Braud 9090X Olive. Excellence reinvented.

The new Braud 9090X Olive are built around proven Braud design DNA and deliver the best harvesting quality and productivity for Super High Density olive orchard. The SDC shaking system with flexible rear rod fixation softly shake and detach the olives. The Noria basket system offers the best respect for the tree and harvested crop. These proven Braud innovations are now designed around more efficient and easy to use solutions, which makes harvesting possible in all Super High Density olive orchard. The result is improved cleaning and performance together with low cost of ownership and day to day easiness to work with.

## Productivity & harvest care

The harvest season is now shorter than ever. The new Braud 9090X Olive models can be set up to work in different orchard in the minimum of time for maximum efficiency. The SDC shaking system and high capacity cleaning system, help you harvest the most of your Super High Density orchard, gently and efficiently. The integrated Intelligent Management System 2.0, with IntelliView™ IV touch screen monitor, provides full access to all key harvester functions. The new Automated Crop Setup, ACS enables to record your best harvesting settings and later recall it whenever you want to achieve the perfect pick. Optimising productivity for all olive trees has never been easier.

## Faster & easy machine preparation

The new Braud 9090X Olive models have been redesigned to minimise machine preparation and costs. The new Noria tension system and automatic transport lock helps reduce maintenance and preparation time. The 9090X Olive now feature an heavy duty high horsepower hydrostatic transmission, in order to travel at 30kph\* on road, and to ensure also a better and faster field operations. The FPT Industrial common rail engine needs its first service at 600h. Less downtime. More work.

\* Only for authorized market homologation.

## Best in class comfort & safety

Step up into the superb new Braud 9090X Olive. You will find it has been designed to fit you perfectly. Note how the seat and the steering wheel adjust to suit you. The standard armrest, with integrated joystick, provides easy access to the most used functions. Safe, quiet and comfortable, the cab complies with the stringent Code 4 European Machine Directive, and can be now fitted with the unique Blue Cab™ 4 system, providing a twin filtration system, complying to both Category 2 and 4 of EN 15695-1 and -2. Moreover, Blue Cab™ 4 package also includes a twin color heated and ventilated seat, LED working lights, an automatic Air Conditioning system and a cool box, all for ultimate comfort.

## Fuel efficiency & multifunctionality

With new FPT Industrial common rail electronic engines you get improved output and economy. With an output of 175Hp, the new Tier 3 engines 6 cylinder deliver more power and torque with best in class fuel efficiency. Moreover, the new steering system enables the machine to have outstanding time saving maneuverability, even on tight headlands with a minimum effort. Work perfectly all year round with the new Braud 9090X Olive.









# The most awarded brand in history.

**1975: Braud 1020**, one of the very first self-propelled grape harvesters rolled off the production line in 1975. This machine would revolutionise the face of grape harvesting.

**1980:** Gold medal at SIMA The arrival of the **Braud 1014** with the revolutionary Noria basket conveying system raises the bar for harvesting quality.

**1983:** The **Braud 1214**, Putting a higher capacity level for picking.

**1984:** Braud joins forces with Fiat Agri, which marked the dawn of a new era of developments.

**1989: Braud 2420 to 2720** series, featuring the Gold medal awarded SDC shaking system were major leap for increasing picking efficiency.

**1994:** The **Saphir Braud SB** high capacity range represented an entirely new product segment for high capacity and world class leading machine.

**2001:** The **SB 65**, the very first extra large vineyard and Super High Density Olive Orchard harvester; its X-tendable width frame enable to adapt even to the widest vineyard canopy as well as Super High Density olive orchard.



1975

1980

1983

1989

1994

2001





## A history of harvesting excellence

In 1975 Braud developed their first self-propelled grape harvester and the face of viticulture changed forever. Today, these state-of-the-art New Holland Braud machines are designed, developed and built by engineers that live, breathe and sleep wine and olives at the New Holland Braud Centre of Excellence in Coëx, France. This pioneering plant is at the forefront of sustainable production, with innovative schemes aimed at reducing the environmental impact and carbon footprint of harvester manufacturing.

**2003:** Extra large vineyards and Super High Density olive orchard can now select the **Braud VX680**: with multifunction frame coupling within 10 minutes, those machines were putting a new step forward to mechanisation. The 24 SDC shakers shows its true potential for grape and olive harvesting.

**2007:** Tier 3 engines were installed on **Braud VX 7090**.

**2011:** Silver medal for new **Braud VX7090 Olive**: The new Super High Density olive harvester maximises picking efficiency in term of shaking and collection. Its patented high efficiency picking unit with 42 SDC shakers, with optional secondary shaking unit pushes the picking with up to record 99% fruit collected.

**2012: Braud 9090X Olive**: with Tier 3 and IMS system: it's the first stage of the Intelligent Harvesting also applied to Super High Density harvesters; harvesting Super High Density Olives efficiently and rapidly has become the benchmark for **Braud 9090X Olive**.

**2017: 15.000 Braud** harvesters built. New **Braud 9090X Olive**, now featuring the Tier 3 FPT engine and Heavy Duty hydrostatic 30kph transmission, the efficiency for Picking is maximised also with IMS 2.0 next generation of Intelligent picking. It evolves toward better efficiency, easier to use together still bringing the core of Braud DNA to it's perfect combinaison.



2003

2007

2011

2012

2017

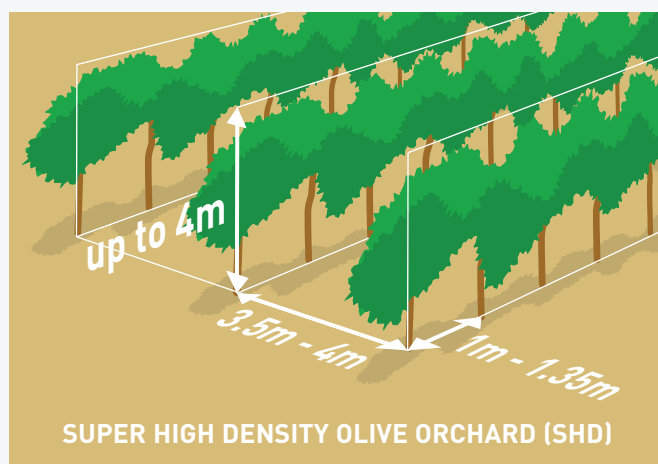


MORE THAN 16,000 GRAPE HARVESTERS SOLD IN OVER 40 COUNTRIES AND THE STORY CONTINUES...



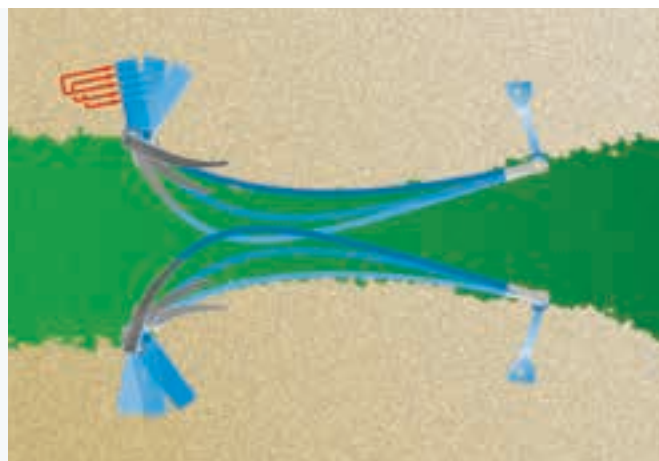
## At the heart of Braud DNA.

Braud 9090X Olive has been developed exclusively for Picking Super High Density Olive Orchard (SHD). Super High Density Orchard are also designed for mechanising 100% of its picking by the Braud 9090X Olive. The SDC system (Shaking Dynamic Control) with flexible rear rods, and the Noria collection system are at the heart of Braud DNA, always improving, but still the benchmark in terms of Super High Density olive shaking efficiency, respect for the olive wood, fruit integrity and minimising losses. Braud 9090X Olive will be your long term best insurance to pick efficiently Super High Density Olive Orchard, in a durable way.



### SDC shaking system

The Braud SDC is recognised as the best picking system. Each shaking rod is independent and hinged at the rear on a flexible fixation. This fixation allows perfect control of the shaker action, with maximum flexibility, for gentle picking. Its progressive entrance, efficient middle shaking area, and progressive divergent area at the back makes shaking both effective and respectful of the canopy. New ACS system "Automated Crop Setup" will enable to save your preferred harvesting parameters into a folder: you can recall the best settings for each crop when required.



### Olive equipment

The front tunnel enables progressive entry of the olive trees into the machine; it simultaneously helps to prepare the tree for harvesting and protects the super intensive olive orchard canopy. The top part of the tree being flexible, it is prepared and gently bended to be better shaken: the top 8 SDC shakers are mounted slightly closer to the center, for a better efficiency on the top lighter part of the tree. The result is: benchmark picking efficiency from the bottom to the top of the Olive tree.



### The most efficient shaking system

The shaking system can have a maximum of 42 SDC shakers, to pick efficiently but with great respect of the canopy: all parts in contact to the canopy are either soft and curved shaped. The overall shaking height of 2000mm enable to detach Olives right to the top of the tree, hence inducing a record 99.9% of Olives detached from the tree.



### Great respect of the canopy

Each of the shaker are hinged at the back with flexible rear rod. This system provide a maintenance free, efficient and soft shaking. Respect of the canopy means very few branches get damaged by the shaking effect itself, hence include a long term sustainability of your orchard: tomorrow's branches to grow Olive are preserved.





# Your olives, treated with care from the beginning.

Since 1980, the Noria Basket system has conveyed every single grape and olive harvested by a Braud harvester. Since then, we have been constantly improving and refining the system for higher speed, and productivity. The Braud Noria system, the benchmark for olive harvesting.



## Noria collection, a must have

At New Holland Braud, respect for the olives is a design priority. The proven Noria with its polyurethane baskets, ensures total care of the trees and fruit without ground losses. All new Braud 9090X Olive has extra capacity with 2.5m of sealed length and XXL size baskets. The very same basket catches the fruit and conveys it to the top of the harvester for a top fruit quality and inducing no fruit maceration.





### Best in Class cleaning

The new high capacity conveyor and top cleaning fan system are specifically designed for cleaning olives. The cleaning conveyors are optimised for an even crop distribution. The cleaning always occurs when the crop is in freefall, for better effectiveness on lightweight material. All new Braud 9090X Olive are fitted with a 460mm wide high capacity cleaning conveyor for a better crop conveying and high capacity cleaning. With Braud 9090X Olive harvesters you get better productivity and a cleaner product sample.



### High capacity in all aspects

Cleaning fan has been optimised to improve crop sample cleanliness. The redesigned fan exhaust now directs fan air flow to the rear of the machine for less dust, less noise, and less residue accumulation. The end result is better efficiency in air flow for the cleaning system. The pipe directs the leaves directly on the ground in between the two rows, with no dust produced at all.



### Reduced and simplified maintenance

Maintenance of Braud 9090X Olive range is now even easier. Advanced new components make ownership and maintenance more cost effective and straightforward. A new Noria tensioning system, allows for tool free tensioning of both Noria sides, using a simple crank handle to move the Noria rails up and down. A Noria pressure sensor detects when the function of the Noria requires too much pressure and warn the driver.



### Hopper capacity

The hoppers have been designed to lower the center of gravity, for improved stability and traction. The tilting height of the hoppers is now 3.3m, added to this the hoppers can simultaneously unload for reduced downtime. The total hopper capacity is 4000Liters, and the maximum capacity is reached using high capacity hydraulic augers, to spread evenly but efficiently the Olives across the length of hoppers: The result is effective autonomy during picking.



### Non stop harvesting with side conveyor

A Right hand side conveyor version for the Olive harvesting head is also available: providing a Left side 2000 liter buffer hopper, this configuration will clearly maximize operation with a non Stop Olive Harvesting.



# Powerful and fuel efficient.

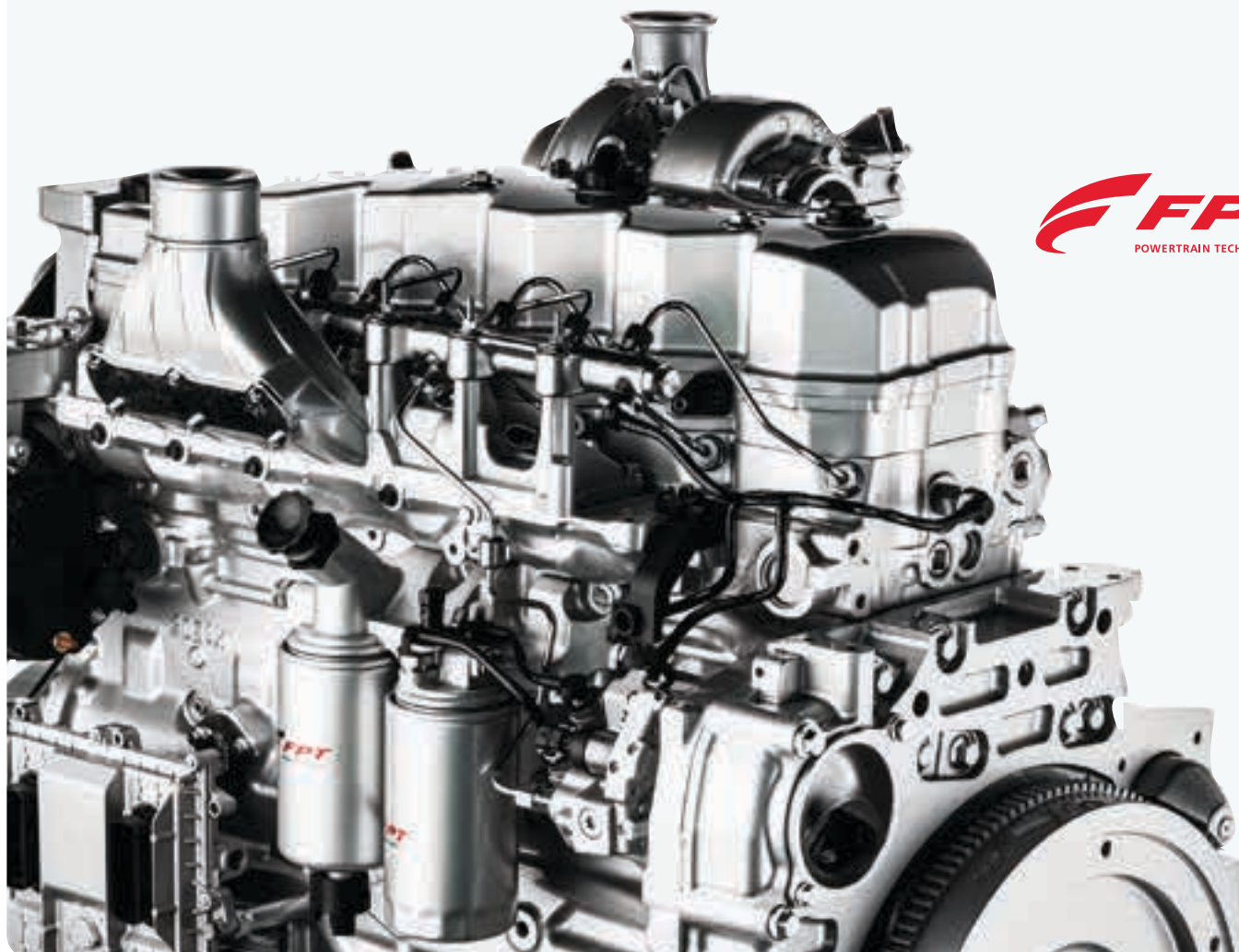
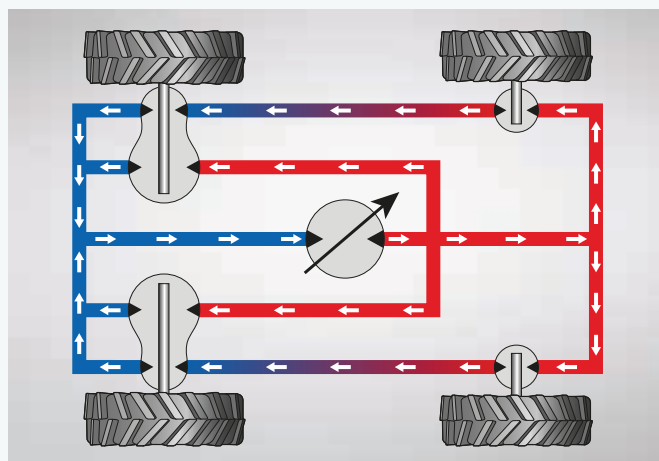


*Sustainable Efficient Technology*

The Braud 9090X Olive is powered by ultra-efficient FPT Industrial 6-cylinder Tier 3 common rail electronic engines developing 175Hp. Combined with AntiSkid twin lock transmission and IMS 2.0, the power management is both efficient and induce the lowest fuel consumption. FPT NEF engines provide no EGR valve solution, as engine only breath fresh air for better efficiency: as a result, engine power output are equivalent to higher horsepower competition engine, using EGR valves. The best engines on market induce the most efficient pick.

## IMS 2.0 new generation intelligent management system

Awarded a bronze medal at Sitevi 2017, the Braud IMS 2.0 new generation offers further functionalities: combined with the new IntelliView™ IV monitor, it continually monitors the demand on the engine, keeping the harvesting parameters constant, but also taking into account the terrain and hydrostatic load, to constantly adjust engine rpm. Furthermore, the Braud 9090X Olive also features the benchmark Twin Lock hydrostatic system, keeping hydrostatic track from front back to wheel motors: as a result, transmission will keep on running even in muddy and in steep slopes conditions. This results in optimized fuel efficiency, and better slope management.

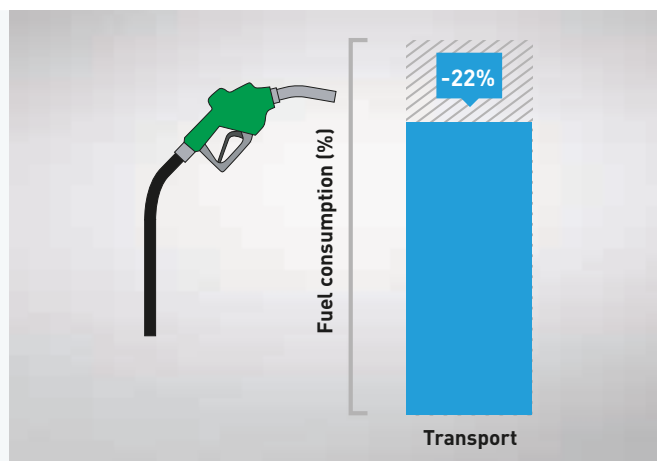


**FPT**  
POWERTRAIN TECHNOLOGIES



### Outstanding fuel efficiency

New Tier 3 engines, combined with IMS 2.0 New Generation Intelligent management system offer outstanding fuel efficiency and economy. Pumps and hydraulics have been increased in displacement, inducing lower engine rpm. Hydraulic components have been designed to provide fuel efficiencies together with proven reliability. This provides even better fuel efficiency in all work modes and fully complete previous generation IMS on Braud 9000.



### New heavy duty 30kph\* hydrostatic transmission

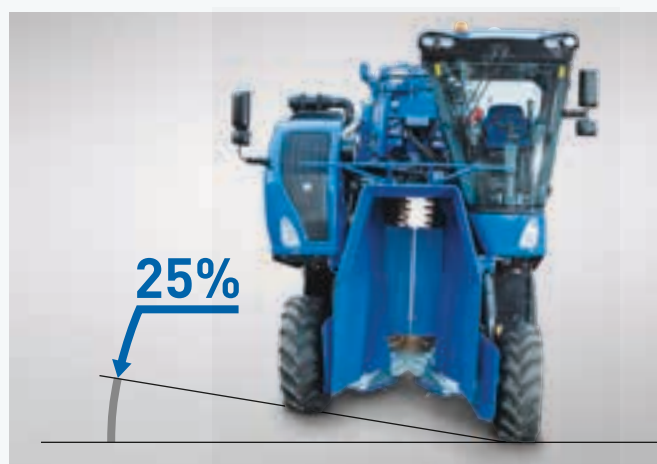
Braud 9090X Olive feature a very high capacity, heavy duty hydrostatic transmission. Also based on Poclain Twin Lock system, this extra high pressure and hi efficiency transmission will provide the best traction and uphill capability, together with 30kph road speed\*, and energy efficient with low heat generation. New Braud 9090X Olive also features standard front wheels hydraulic suspension, for the best ride and comfort on the market. New 600mm rear tyres, and 400mm front tyre will better manage ground footprint for the hardest harvesting conditions.

\* depending on market local homologation.



### Automatic levelling and head lock system

IMS 2.0 automatically controls the height and levelling. The operator simply sets the desired picking head height, and it will be maintained automatically, regardless of the terrain and up to 25% sidehill correction. Sensors, fitted as standard, prevent the picking head ever making contact with the ground in difficult conditions. Machine height will now be also maintained in road mode with autolevelling acting in road transport, providing constant height. Automatic swing lock system also enable to lock automatically the head pendularity during road transport: no need to leave your seat moving from field to road makes work more efficient.



### High manoeuvrability and faster headland sequences

Both tractor and harvesting head have been designed with compactness in mind. This is clearly demonstrated in the design of the rear of the machine, where the Noria does not protrude beyond the rear tyre, this allows earlier turns when exiting the row. Headland sequence can also be activated with one command only from the handle: lifting the machine to a pre set headland height and stopping shakers. The same headland button will turn on all functions when engaging the next row.





# Harvest in First Class.

Braud 9090X Olive harvester cabs are recognised as the industry benchmark. The cabs are fully suspended and soundproofed for a smoother, more comfortable ride. Pressurised, heated and air-conditioned, the cabs are designed to offer optimum comfort and protection during harvest, spraying and other operations. In like for like conditions, noise levels are reduced by 3dB(A) compared to the previous harvester range, providing the quietest and the most comfortable cab in the market.

## The comfort benchmark

The cab structure and frame of Braud 9090X Olive harvesters is designed to meet Code 4 of the new European Machinery Directive 2006/42/CE, the most stringent standard applicable. A seat belt, safety glass hammer and operator presence sensor are standard fittings. Attention to details has been followed, providing a wide Braud badged lateral console, with 2xUSB plugs, perfect to load and have your cellphone charged and ready at your fingertips. A fully redesigned headliner, including a refrigerated box, provide extra finish and functionality, with all buttons accessible easily. More comfort, more performance.



## Easy access

A new electrically actuated ladder platform makes cab access safe and easy. An LED light automatically lights the way when climbing the steps at night.



## Total control

The new light control panel (LCP) gives access to all 12 lights and beacon around the machine. All Braud 9090X Olive are fitted as standard with a Bluetooth Radio for handsfree connectivity.



## Full visibility

The Braud 9090X Olive cab, combined with a specially profiled engine hood allows full visibility even on the right side of the machine, giving you full control during harvesting.





### Night work

A total of 12 standard lights will illuminate your work, with the addition of two new rear side lights. Mounted on the left and right sides of the cab, they help visibility during manoeuvres at night. Extra additional lights can be fitted as an option.



### 360° Vision

Two cameras are fitted as standard and the in-cab colour monitor can accommodate a total of four cameras to enhance visibility and view machine functions.



### Shade and space

Braud 9090X Olive cabs are fitted with 2 sun shades, one on the front windscreen and one at the rear. They provide comfort even in the brightest harvest conditions. Attention to design detail includes improved in-cab storage areas. A fold-down laptop table, coat hook and elastic stowage net are standard.



# Effortlessly maximising performance.

Intelligent and intuitive automation saves time and enhances harvesting performance. The multifunction handle is your right hand harvesting man. All key machine parameters can be controlled, including travel speed and direction, manual levelling and the picking head. The right armrest can be adjusted in length and height, and machine functions can be analysed at a glance courtesy of the IntelliView™ IV touch screen monitor. An interactive handle display will train operators directly on the monitor, teaching and self training all functions and how to activate basic machine settings. Simple and easy. ACS screen will enable to save your preferred picking setting and store for a later recall. Simple and powerful.

All grape harvester functions and parameters can be simply and easily adjusted by touching the IntelliView™ IV monitor

Raise right hopper

Raise both hoppers

Raise left hopper

Lower both hoppers (Automatic)

Lower right hopper

Lower left hopper

Raise machine

Tilt machine left

Tilt machine right

Lower machine

Engage conveyor and cleaning

Menu button: access menu to set parameters

Adjust parameters within selected menu

Engage shaking system





### IntelliView™ IV Plug and Play

The ultra-wide 26.4cm IntelliView™ IV colour touchscreen monitor is fixed on a sliding rail which can move up and down the cab pillar so you can position it just where you want. When compatible multifunction implements are connected, the IntelliView™ IV monitor automatically sets work pages for easier control and management of the machine.

### Row Tracking System

The optional RTS system uses GPS technology to map the rows on the IntelliView™ IV monitor, displaying harvested rows, missed rows and overlaps. Especially useful during night work and spraying applications.

### Olive weighting system

New Braud 9090X Olive twin hopper can be equipped with an optional Olive weighing system. This option, weighs the machine before and after unloading, providing a static measurement of Olives for logistics, the mill management, or global yield measurement. A dedicated weight performance screen enables weights to be added and calculates the average yield (per field, per trailer, per day, etc.) and enable to better manage the harvested crop. A printer will provide a ticket of the weights on screen, to record the harvested Olives.



Maximum engine speed setting

Minimum engine speed setting

Flow divider (if fitted)

Cruise control

Road mode



## 360°: Braud 9090X Olive.

The new Braud 9090X Olive models have been designed to spend more time working and less time in the yard. All service points are easy to access, and long service intervals mean they will spend more time in their natural environment.



The engine air filter is easy to check, clean or replace, with no need for tools, and is accessible from the ground.



Cooling package opens out to make cleaning faster and easier.



Two piece engine hood opens wide for full service access: front hood flips up perfectly for accessing engine, side door swing with a gas strut for cleaning and servicing hydraulics and coolers.



Engine oil check and fill points are easy to reach. You will also still be able to enjoy the long 600 hour service intervals that you've come to expect of New Holland.





To facilitate and reduce maintenance, all harvester head grease points are grouped together and are easily accessible from the head platform.



The fuel tank can be filled from the ladder for an easy access.



#### Dealer Installed Accessories

A comprehensive range of approved accessories to optimise machine performance in all conditions can be supplied and fitted by your dealer.



Models	Olive 2 Hoppers	Olive Side Conveyor	Harvesting Head Olive 2 Hoppers
<b>Orchard type</b>	Super Intensive olive orchard		
<b>Clearance Max (machine fully lifted)</b> (m)	3.00	3.00	3.00
Multifunctional grape harvester with Quick uncoupling	●	●	●
<b>Engine</b>			
Type	FPT NEF	FPT NEF	–
Compliant with engine emissions regulations Tier/Stage	3/3A	3/3A	–
Power ECE R120 - ISO 14396 [kW/hp(CV)]	129/175	129/175	–
Cylinders / Aspiration	6 Turbo with Intercooler	6 Turbo with Intercooler	–
Reversible cooling Fan	○	○	–
<b>Tractor base unit</b>			
Diesel capacity (L)	270	270	–
Heavy duty high-efficiency transmission, with 30kph Road Speed*	●	●	–
Front axle hydraulic suspension	●	●	–
Maximum steering angle (degrees)	90	90	–
Front wheel torque limiter	●	●	–
Maximum slope (%)	35	35	–
Lateral slope (%)	25	25	–
IMS 2.0 - Intelligent management system 2nd Generation	●	●	–
CDHA - Automatic height and lateral slope correction	●	●	–
Cruise control with radar	●	●	–
Electric park brake with brake pedal and seat button	●	●	–
<b>Harvesting head</b>			
Number of SDC shakers (standard dotation)	42	42	42
Flexible rear shaker fixation	●	●	●
Quick coupling of the picking head	●	●	●
Hydraulic horizontal shaking rod spacing / quick shaker engagement	● / –	● / –	● / –
Sealed length of collection baskets (mm)	2500	2500	2500
Number of collection baskets	2 x 71	2 x 71	2 x 71
Basket size	XXL	XXL	XXL
Ground sensor for Autolevelling	●	●	●
Tool free Noria tightening system	●	●	●
Automatic swing lock system	●	●	●
High capacity central cleaning conveyors (mm)	460	460	460
Secondary lateral dispatching conveyors (mm)	230	230	230
Upper cleaning fan with rear exhaust	●	●	●
Lower cleaning fans	–	–	–
Hydraulic heavy duty auger	●	●	●
2 Stainless steel hoppers / Capacity (L)	● / 4000	–	● / 4000
1 Stainless steel hopper and right side conveyor / length (m)	–	● / 5.2	–
Remote control	○	○	–
Harvesting head centralised greasing	●	●	●
<b>Cab</b>			
Cab inside Volume (m³)	2.23	2.23	–
Cab glass area (m²)	2.27	2.27	–
Actuated access ladder and platform with light	●	●	–
Protective structure	ROPS code 4	ROPS code 4	–
Air Conditioning and refrigerated box	●	●	–
Cab filtration system / Category level (EN 15695)	● / 2	● / 2	–
Blue Cab™ 4 Pack**	○	○	–
Bluetooth Radio with separated microphone (hand free phone calls)	●	●	–

Models	Olive 2 Hoppers	Olive Side Conveyor	Harvesting Head Olive 2 Hoppers
Orchard type	Super Intensive olive orchard		
Cab			
2 Speakers integrated system	●	●	–
Adjustable armrest & Multifunctional joystick	●	●	–
IntelliView™ IV Touch screen Monitor with adjustable position	●	●	–
Splitable Color monitor for cameras	●	●	–
Cameras (color)	2 ● / +2 ○	2 ● / +2 ○	1 ●
Steering column and adjustable pneumatic suspended seat	●	●	–
Heated and ventilated Bi-color deluxe Seat	○	○	–
Lights with dedicated Light Control Panel (LCP)	12	12	–
Mirrors with electrical adjustment	●	●	–
Right mirrors retractable	●	●	–
Front and back glass sunshades	●	●	–
Premium Viticulture/PLM®			
Row Tracking system GPS NH 162 [RTS]	○	○	–
Grape static weighting system with printer	○	–	–
MyPLM®Connect Telematics professional package	○	○	–

● Standard

○ Optional

– Not available

\* Only for market authorizing homologation

\*\* Blue Cab™ 4 Pack: Featuring Category 4 filtration (EN 15695-1 and -2), Automatic A/C, heated and ventilated Bi-color deluxe seat, LED working lights, removable 12V Cool box



Models		Olive 2 Hoppers	Olive Side Conveyor	Harvesting Head Olive 2 Hoppers
Dimensions and tyres				
A - Max height with cab, harvesting head on the ground	(m)	4.04	4.04	–
B - Length max	(m)	6.1	6.7	–
C - Maximum width of base unit	(m)	3.00	3.00	–
D - Min width at the rear wheels (with 600mm rear tyres)	(m)	3.24	3.24	–
E - Ground clearance (under tractor frame)	(m)	2.31-3.06	2.31-3.06	2.31-3.06
F - Wheelbase	(m)	3.30	3.30	–
G - Maximum hopper tipping height, under hopper	(m)	3.10	3.10	3.10
H - Maximum hopper tipping axis height	(m)	3.33	3.33	3.33
I - Harvesting head back offset (from wheel axle)	(m)	936	936	936
Max useful Shaker height / Number of SDC shakers		2.05 / 42	2.05 / 42	2.05 / 42



# New Holland.

A real specialist in your agricultural business.



AT YOUR OWN DISTRIBUTOR

New Holland prefers **AMBRA** lubricants



Visit our website:  
[www.newholland.com](http://www.newholland.com)

Send us an e-mail:  
[africa.topservice@newholland.com](mailto:africa.topservice@newholland.com)  
[middleEast.topservice@newholland.com](mailto:middleEast.topservice@newholland.com)

