

flexicoil

SETTING THE STANDARD

PRODUCT RANGE





INDEX

4-5	Flexi-Coil - Giving you what you need
6-9	Precision Agriculture
10-15	Air Cart
16-17	Precision Cultivators
18-21	Air Drills
22-23	Ground Engaging Tools
24-27	Disk Drill
28-31	Specifications

FLEXI-COIL – GIVING YOU WHAT YOU NEED

WHAT DO FARMERS REALLY NEED WHEN THEY BUY SEEDING AND TILLAGE PRODUCTS?

Reliability, accuracy, durability, flexibility and efficiency are key, so that is what we aim to deliver with all of our products. From our unrivalled air delivery system and down draft metering to our customisable configuration options, our features are all about creating products that do the job better, faster and more easily.

Carefully engineered components like the Easy Flow header mean Flexi-Coil air carts perform better, and our large-capacity, easy one-person auger operation is one of the biggest time-saving features of a Flexi-Coil air cart.



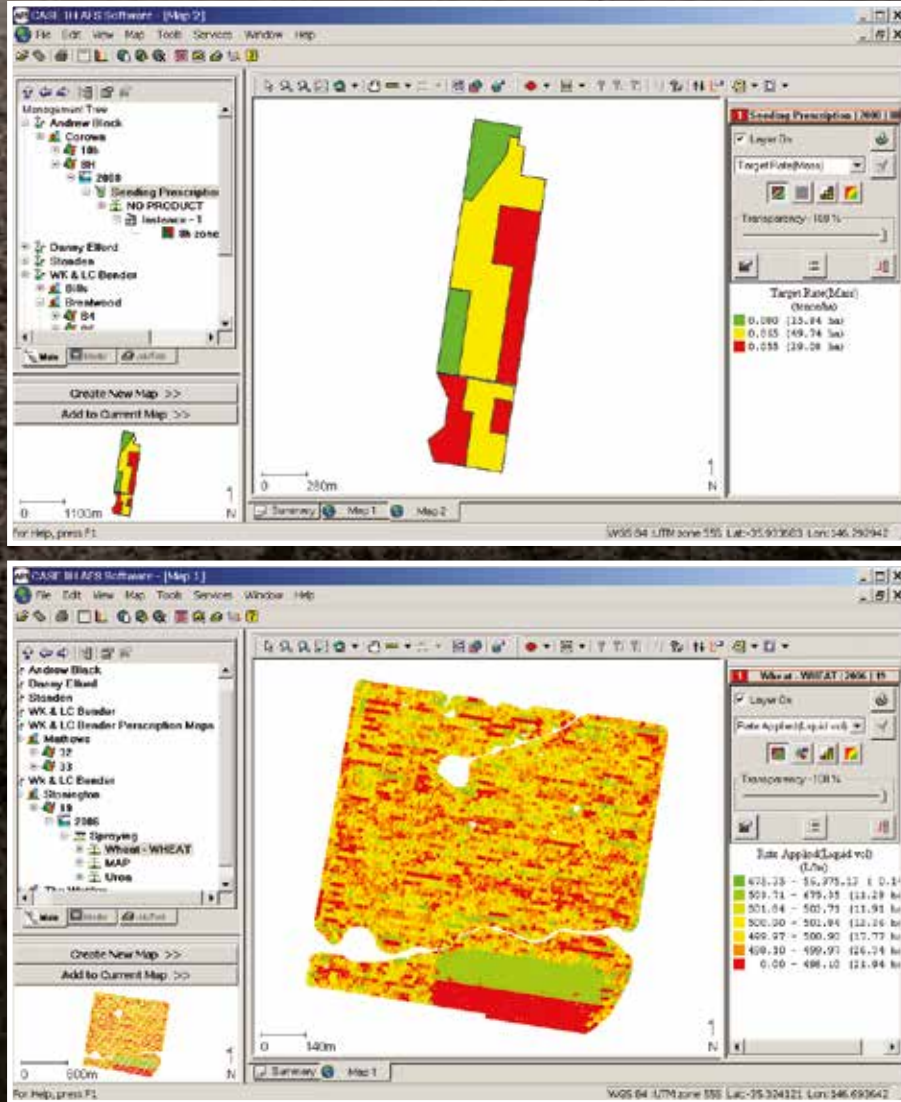


PRECISION AGRICULTURE

Precision agriculture is becoming ever more important to farmers who want to get the most from their land. Flexi-Coil is leading the way with a whole range of innovations to help you seed and fertilise where you need to and how you need to. All variable rate Flexi-Coil air carts have the ability to run prescription maps to automatically control seed and fertiliser applications. Ensuring seed and fertiliser are placed at the right rates and correct depth means your crop has the best possible chance right from the start. Flexi-Coil gives you a wide range of capabilities for precision farming.

With our variable rate metering systems you can set and monitor application rates precisely, from the comfort of the tractor seat, while our air carts accurately distribute fertiliser and seed at varying rates. And our FlexControl electronics make it easier to manage the control of your air cart. The ability to run prescription maps to automatically control seed and fertiliser applications comes standard on the new FlexControl III and with the addition of a Task Controller for the Flexcontrol II electronics. The Flexi-Coil air cart is designed to grow with you as you add to your rotation.





PRESCRIPTION MAPPING

Compatibility is built in with the FlexControl III system, so you can manage harvester information your way. It works with almost any GPS receiver or guidance system on the market and prescription maps can be created using Case IH AFS or New Holland PLM software that comes standard with harvesters. This software can also take other types of prescription maps and convert them for use in Flexi-Coil variable rate air carts and can be used to manage all yield mapping, guidance

data, spatial mapping, prescription maps, farm maps, logging files across CNH Industrial equipment platforms and most other Brands.

WORK SWITCH FOR HEADLAND CONTROL

The work switch turns the implement and prescription logging on and off when making headland turns or when implements are raised or lowered. This ensures no loss of product, accurate data recording and improved operator reliability.



FLEXCONTROL

You know which areas of your field could be managed better by applying different rates, populations or seed varieties. And you know that keeping a close eye on inputs and making informed decisions will help you make every seed count.

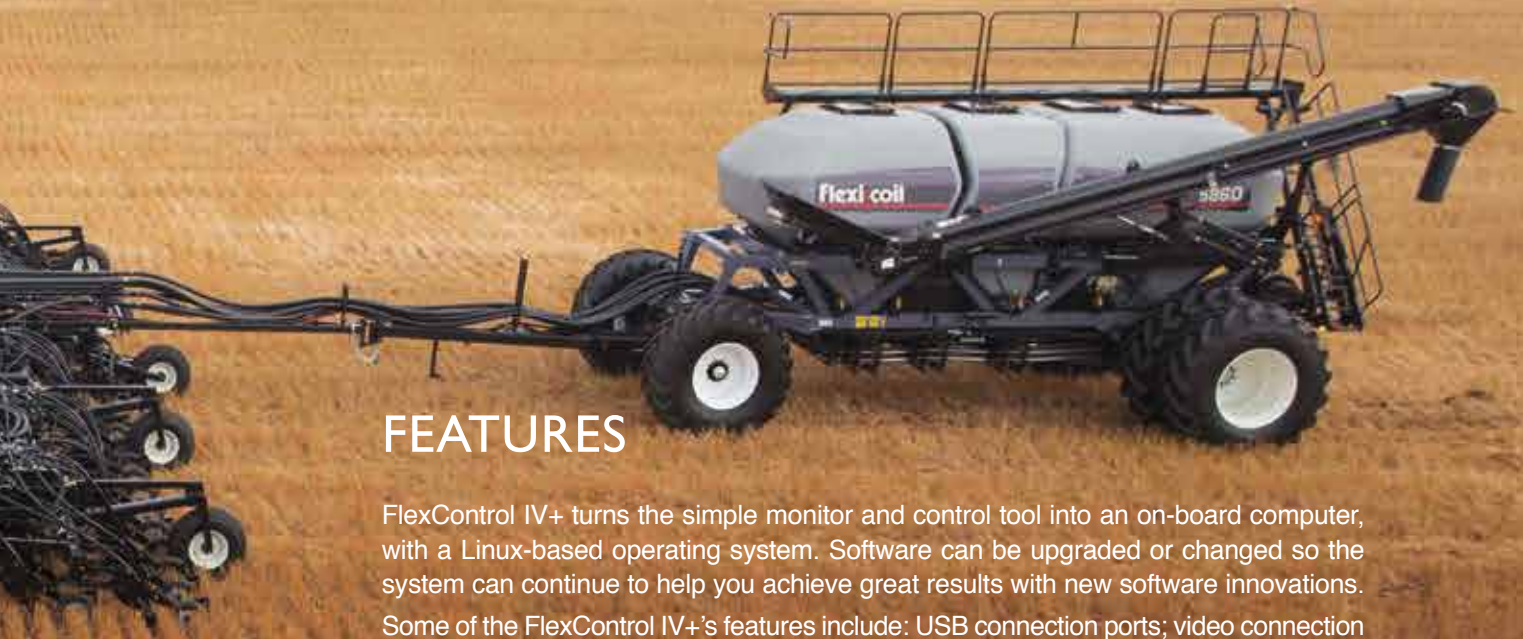
FlexControl electronics helps you get the most from your land by making it easier for you to seed and fertilise where you need to and how you need to, lets you take full advantage of variable rate metering and keeps you informed about the performance of your seeding system.

FLEXCONTROL IV+ DISPLAY

The new FlexControl IV+ onboard display allows you to monitor and control Flexi-Coil air seeders, compatible tractors and combines, guidance systems and other ISO11783-compliant implements, right from the vehicle's cab.

It's a 10.4 inch (26 cm) colour display that gives you easy access to essential information including ground speed, fuel usage (on compatible tractors) and seeding rates.

Adjustments can be made on-the-go to maximise efficiency.



FEATURES

FlexControl IV+ turns the simple monitor and control tool into an on-board computer, with a Linux-based operating system. Software can be upgraded or changed so the system can continue to help you achieve great results with new software innovations. Some of the FlexControl IV+'s features include: USB connection ports; video connection points to allow video input; and an Ethernet port for future web browsing capability.

FLEXCONTROL IV+ AIR CART FUNCTIONS

- ISO11783 – Virtual Terminal (Virtual Terminal software required)
- Automatic Overlap Control – task controller plus GPS input required (not standard)
 - reduces overlap applying and savings on input costs
- Fan speed and ground speed monitoring
- Bin pressure - ensures operator knows bins are pressurised
- On-the-go seeding rate adjustment with sensors for:
 - Bin depth - Track tank level via ultrasonic bin level sensors
 - Plus cameras for each bin and one on rear
 - Rate control and sectional control
 - Plus bin full indicator lights for filling from ground level to alert operator bins are full
- Air cart diagnostics
- Acre or hectare recording
- Estimated time remaining for each tank
- Precision Farming and As-Applied software (Task Controller software required)
 - Grower, Farm, Field, Task filing structure
 - Coverage area mapping
 - Summary data
- As-Applied mapping of up to seven different individual products
- Prescription (Rx) controlled product application
- The latest FlexControl IV+ is standard on all Flexi-Coil air carts
- Calibration wizard - to make calibrating quick and easy (user friendly)

FLEXCONTROL IV+ SPECIFICATIONS

- | | |
|---|---|
| • Overall Dimensions: 7.6' ø 10.2 in (195' ø 260 mm) | • USB Connections: 2 |
| • Screen Size: 10.4 in (26 cm) | • RS232 Connections: 2 |
| • Memory RAM: 256 MB | • Video Inputs: 3 |
| • Memory Flash: 64 MB | • Ethernet Port: 1 |
| • Data Recording: 1 GB internal (external USB data card required) | • Weight: 3.32 lb (1.5 kg) |
| • CAN BUS Inputs: 2 | • Compatible with New Holland Intelliview IV and Case IH Pro 700 monitors |

60 SERIES AIR CARTS

NEW FROM THE GROUND UP

With individual section control, 60 series offers you a new standard in efficiency and productivity. Our new 60 series gives you accurate product rates and gentle seed handling, reduced seed cracking and scarring, and improved seed germination. Seed for longer between fills with greater tank capacity and fill quickly with auger or conveyor.



AIR DELIVERY – HOW DOES IT WORK?

AIR DELIVERY HELPS YOU PLACE SEED, FERTILISER AND OTHER PRODUCTS SIMPLY AND PRECISELY.

A basic air delivery system consists of an air cart, a series of hoses called an air distribution system and a seeding tool. The air cart directs the right amount of air and product into the distribution system, which in turn carries product to the seeding tool.

Because different farmers have different needs, Flexi-Coil allows you to place up to four separate distribution systems on the seeding tool. With one system you can single-shoot. With two, you can single- or double-shoot

AIR DELIVERY

Flexi-Coil's renowned air delivery helps ensure seed, fertiliser and other products are placed simply and precisely. Our air carts direct the right amount of air and product into the distribution system, which in turn carries product to the seeding tool.

Flexi-Coil allows you to place up to two separate distribution systems on the seeding tool.

SINGLE-SHOOT allows you to apply product from multiple tanks together in a single air stream for application in one location. For two bins, fertiliser and seed are combined, for three or four bins multiple products can be blended together into a single-shoot application.

DOUBLE-SHOOT means placing products separately in two locations, such as deep banding fertiliser and placing seed separately, via two separate air streams. Paired row is another example of fertiliser placed below two paired rows of seed.



CAPACITY / TANKS

Quick fill and greater tank capacity on the 4460 to 9560 models means you can fill up fast and seed for longer between fills. Choose capacities from 12,234 litres to a huge 33,477 litres for larger farms and make fewer stops to ensure you get the job done efficiently. Full poly tanks are corrosion resistant with two, three or four tank models available. Small seeds tank is a steel tank mounted between two front poly tanks, and is ideal for canola.

Rate accuracy is assured with bin level and tank pressure sensors with alarms designed to alert the operator of any air leaks. In-tank and rear-view cameras are also standard equipment.

A tank full notification is standard to alert the operator during the tank filling process. This allows ground level monitoring of the fill process and allows responsive shutoff of the product flow without having to quickly move up and down the air cart staircase. The mounted auger or conveyor is easily operated by one person, for quick filling and emptying of the air cart. The deluxe auger or conveyor is standard with handheld remote control. Quick fill conveyor is standard equipment on 5560, 5860, 7660 and 9560, and can fill in 10 minutes or less.





EZ FLOW HEAD

Flexi-Coil's innovative EZ Flow head system promotes simple and accurate seed distribution. The internal vein system carefully directs seed or fertiliser into the secondary hoses from the EZ Flow head, while the unique air delivery system ensures products like seed and fertiliser are delivered efficiently therefore minimising damage and clumping.



METERING / DISTRIBUTION AND SECTIONAL CONTROL

Flexi-Coil's 60 series air carts provide true section control – a new feature. With increased control, you can save on seed and fertiliser for a new level of efficiency.

FlexRate™ sectional control means you can individually control up to 10 sections of the seed tool ensuring you put the seed where you intend, reducing overlap, when utilising auto overlap feature (note task controller required for auto overlap control and prescription seeding).

Every Flexi-Coil air cart is designed to provide accurate metering and efficient operation. The patented FlexRate Modular Metering System™ features independent 24 volt electric drive motor for each individual run, with integrated controls for single or double-shoot product application.

Two independent air systems, each with its own fan for increased air capacity, allows for seamless double shooting. Configuration can also be set up for single shoot.



VARIABLE RATE

With clever engineering and a variety of flexible options, Flexi-Coil air carts are perfectly matched to your needs.

Variable rate metering makes it easy to set and vary product rates right from the tractor seat.

Versatility is built in, so you can choose the roller segment from either full width, half width or narrow to suit the seed size and or rate of the seed and fertiliser.



Canola



Half Coarse



Full Coarse





SAFETY / ACCESS

Flexi-Coil air carts are built with accessibility, safety and versatility in mind. The new 60 series features large tank openings, low-profile lids, offset platform and folding staircase for fast access, easy filling and emptying. An internal tank ladder is included for inspections, and cart top railings fold down for storage and transport.

Work lights for night time operation and transport lights with beacons for road travel add to the operator's safety.

AUGERS AND CONVEYORS

A quick fill conveyor system with wireless remote control is standard on 5560, 5860, 7660 and 9560 models. A small seeds tank on models 4660, 5860, 7660 and 9560 now features a pneumatic fill system using smooth air flow for efficient ground level filling. Bin fill indicator lights are now standard on all carts. (Note: 3560: auger or conveyor currently not available)



FLOTATION

Quad wheel configuration with front steerable axle is standard on all tow-behind air carts, providing superior flotation and stability in all terrains.

The CNH Industrial brake system design which is standard equipment on 7660 and 9560 carts is superior in performance, utilising proportional control. Proportional brake control is based on the deceleration rate of a vehicle, which means that whether your cart is empty or full, you always get the required braking force when activated.



PRECISION CULTIVATORS

FLEXI-COIL ST820 PRECISION TILLAGE

Flexi-Coil's ST820 cultivator combines solid construction, durability and flexibility with incredible accuracy and depth control. Its modular design allows for expanding widths, with three-section and five-section base models offering working widths between 7.6 to 18.9 m.

A flexible frame and floating hitch allow the ST820 to provide exceptional contour-following capability – you can closely follow the rise and fall of the ground for consistent depth accuracy and heavyweight construction helps it penetrate the hardest soil.

Take advantage of the ST820's land-following precision by attaching an air cart for seeding and fertilising.

The ST820 has an 81 cm (32 inch) high clearance frame height and careful placement of wheels to the rear of the frame to allow heavy residue to flow through without plugging. The convenient depth setting combined with single cylinder depth control and parallel lift give the ST820 precision in tough conditions.

THREE-SECTION AND FIVE-SECTION MODELS

The ST820 is available in three or five-section models with 229 mm or 305 mm (9" or 12") row spacing. The three-section model ranges in width configurations from 7.6 m – 13.4 m (25' to 44'). Depending on the working width configuration, the ST820 ranges in transport width from 5.7 m – 6.6 m (18'8" to 21'8") and ranges in transport height from 3.8 m – 5.5 m (12'6" to 17'11").

The five-section model ranges in width configurations from 13.1 m – 18.9 m (43' to 62'). Depending on the width configuration you choose, the ST820 ranges in transport width from 5.7 m – 6.6 m (18'8" to 21'8") and ranges in transport height from 4.2 m – 5.1 m (13'10" to 16'10").

Options for the ST820 include an air distribution package for fertilising and seeding, field hitch mounts for air-carts, mounted harrows, mounted press wheels, mounted press wheel scrapers, single or dual end-markers, and a rigid-mount single point tillage hitch.



PRESS WHEELS AND HARROWS

Seed how you want with an ST820. Use detachable mounted harrows for solid seeding, or poly press wheels for row seeding. Flexi-Coil's mounted harrow is available in a three or four row finger configuration and has been designed for durability and easy adjustment. A telescoping mount arm allows for quick removal and the harrow is fully adjustable for pitch, height and pressure. Harrows are available in 1.4 m and 1.8 m widths.

Press wheel mount arms are interchangeable so that mounted press wheels can be simply detached and replaced with mounted harrows using only a quick-pin.

FLEXIBILITY FOR DURABILITY AND ACCURACY

The ST820 centre section and wings are constructed with diagonal hinge lines which allow the frame to follow contours of the land and minimise frame stress.

The ST820 responds to changing contours instead of stressing frame members and welds—and the result is a longer-lasting frame. A floating hitch gives improved front-to-back, land-following capability.

Land-following capability is important for depth accuracy in uneven terrain.

The ST820 frame follows the contours of hills, ravines and washouts to maintain the depth you choose. Durable, high-density polyurethane discs cushion the frame and absorb movement as the machine flexes.

DEPTH CONTROL – ACCURATE SEED DEPTH UNDER ANY CONDITION

The land-following capability, heavy weight construction and easy depth setting of the ST820 precision tillage make it an ideal seeding tool. With air distribution package the ST820 places seed accurately in uneven ground and high residue conditions.

Single cylinder depth control provides accuracy, reliability and low maintenance, and the depth for the entire machine is set at a single point. A mechanical linkage translates the hydraulic lift to the walking axles so the depth stays constant across the entire machine.

Superior flotation provides stability in field and transport positions. Walking beams are placed well to the rear of the machine for consistent depth control and residue clearance. Parallel lift between the front casters and the rear walking beams keeps the frame level, whatever the working depth.

AIR DRILLS

Flexi-Coil's air drills are adjustable, flexible and efficient. The 5000HD and 5500 air drills give you multiple bar configurations for adaptable row spacing, four-row tynes, and rubber and steel packing systems that improve the ride and apply less packing pressure in heavy, sticky soil conditions. And of course, they provide great depth control and placement accuracy. Single point depth setting makes it easy to set exact, repeatable seed depth in every field.



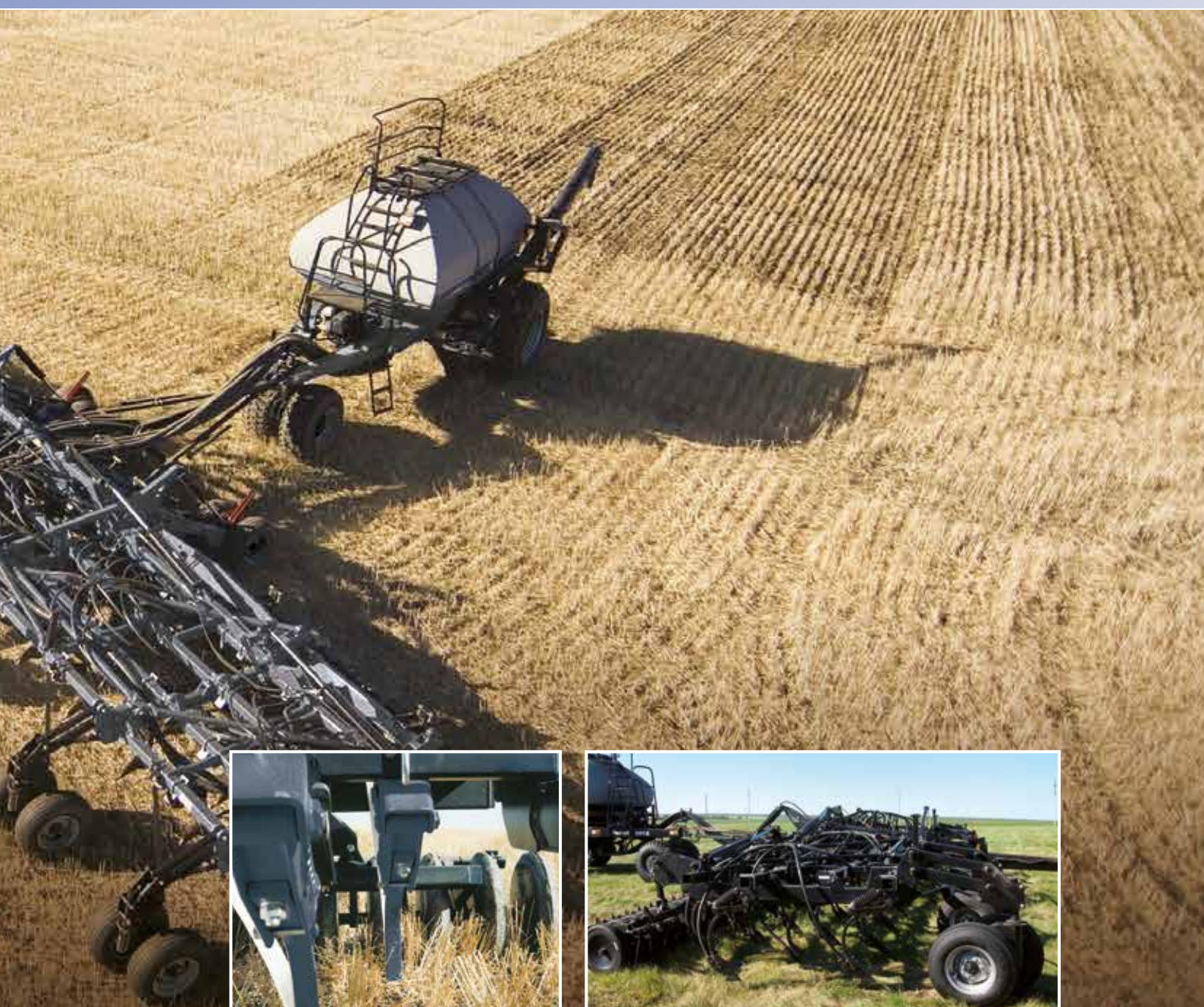
5000HD AIR DRILL

The 5000HD air drill lets you put seed and fertiliser in the right place for faster, more even germination. It delivers accurate seed placement with on-row packing. With a flexible frame and four bar configuration, the 5000HD brings precision to a wide variety of seeding conditions.

An 81 cm frame clearance lets heavy residue flow through the drill. The frame is carried by the press wheels at the rear and the casters on the front, so there are no wheels in the frame to interfere with residue flow.

Optimum flotation is provided by dual walking casters, which are standard on the centre section of larger models and optional on wing sections. There are multiple press wheels and closing options to match the drill to your specific field conditions. Quick connects let you hook up to seeding or banding tools quickly and easily.





Rubber press wheels are available in three, four and five-and-a-half inch sizes. The flatter profile rides over a wider area for less packing pressure, just right for soils where too much packing can be a problem. Three inch rubber press wheels can be used with knife openers or when spreading seed up to three inches, or for narrow double shoot applications. Four inch rubber press wheels are effective for many applications where seed is spread up to four inches, while five-and-a-half inch rubber press wheels offer on-row packing in wide seed spread applications.



Parallel linkage between the front casters and the rear press wheels keeps the frame level and maintains seeding depth in changing conditions. Unmatched depth accuracy is delivered by a flexible frame which allows openers to follow the contours of the ground.

5500 AIR DRILL

Available in 18.3, 21.3 and 24.3 m widths, the Flexi-Coil 5500 air drill features a patented two-piece wing, with simple, parallel-circuit hydraulics. This design minimises stress on the framework while ensuring depth accuracy.

“Split-row” tyne pattern configurations in spacings of 228 mm or 305 mm (10 or 12 inches) give you a smooth field finish with conventional C-shanks using the same proven trip design.

REVOLUTIONARY FOLDING SEQUENCE

The two-piece wing design allows the 5500 to achieve a reduced profile for easy transport. The unit folds down to just 5.4 metres wide, making it just 200 mm wider on each side than many tractors. Transport height is just 4.1 metres. Transport is safer, faster and less stressful.

WALKING PNEUMATIC TYRE

The Flexi-Coil 5500 is offered with gang-style press wheels in semi-pneumatic, steel or walking beam pneumatic. The walking pneumatic tyre is available only on this model.



VARIABLE PACKING PRESSURE

A patented variable packing pressure system allows operators to adjust packing pressure from field-to-field. Pressure of the pack wheels can be adjusted to reduce the pressure by as much as 30 per cent.

FLEXIBLE FRAME

Flexibility dissipates frame stress for more durability than traditional welded joints. Where the frame flexes, durable self-lubricating joints with chrome pins and polyurethane pads add lasting performance. Exceptional land-following flexibility provides precise seed placement.

Each wing on the 5500 is attached to a collective rockshaft with simple, parallel circuit hydraulics, allowing each wing/press wheel combination to follow the ground. This minimises stresses in the framework and ensures precise seed placement.

The 5500 achieves exact and repeatable sowing depth thanks to a unique configuration. Two front ranks follow the contours of the land at a depth set by the nearby caster assemblies while two rear ranks follow the ground on which the press wheels run. Single-point depth setting provides simple control of the depth across the entire machine.



GROUND ENGAGING TOOLS

Flexi-Coil has developed a wide range of ground engaging tools to help you customise products to suit your requirements.

STEALTH OPENER

The Stealth™ opener is a modular system that adds versatility to your row seeding. A choice of tips or attachments can be mounted on the main body for a customised opener system.

Replaceable tips let you choose the right opener for your application and help you manage wear. Knife tips are used for both single- or double-shooting and include the heavy duty tip with carbide points. Spread tips are for single-shoot only.

Stealth openers are manufactured from Austempered Ductile Iron (ADI) for strength and consistency.

STEALTH SINGLE SHOOT

The Stealth opener works for both narrow row and spread row seeding styles.

KNIFE TIPS

- Low soil disturbance.
- Very narrow rows of 22 to 25 mm (7/8 to 1 inch).
- For use with any press wheel.
- Heavy duty carbide tips to match soil conditions.

SPREAD TIPS

- Designed for low disturbance seeding.
- Wider product spread allows more fertiliser to be placed with the seed.
- Spread tips are available in 75, 100, 125 mm (3, 4 or 5 inch) sizes.
- For use with press wheels that match row widths.





STEALTH DOUBLE SHOOT

Stealth double-shoot attachments bolt on to the rear of the main body and allow separate placement of seed and fertiliser in one pass. This separate placement allows for higher fertiliser application rates without damaging the seed.

SIDE BAND

- Places seed 25 mm (1 inch) above and 25 mm (1 inch) to the side of the fertiliser.
- The wing design forces soil into the fertiliser trench to provide separation from the seed.
- Can be used with all press wheels.

PAIRED ROW

- Seed is placed 25 mm (1 inch) above and 25 mm (1 inch) to both sides of the fertiliser.
- Available in HS format for heavy soils and gumbo, and in LS format for light soils and sandy loam.
- Designed to force soil into the fertiliser trench to provide separation from the seed.
- Recommended for use with press wheels at least 75 mm (3 inches) wide.
- Available with carbide for longer life.



SWEEPS

For weed control during the seeding pass, you can seed with sweeps. Seed and fertiliser can be placed in a narrow row or broadcast, depending on your packing choice.

Narrow row sweep provides a seed row that matches the width of the press wheels used.

Sweep and broadcast is for use with bolt-on sweeps. It provides a uniform spread of seed and fertiliser across the width of the tool and is recommended for full width coil packing.



(The information on openers and seed boots in this section is meant as a general guide in average soil and moisture conditions. Flexi-Coil cannot accept liability for crop loss or damage caused by incorrect placement or excessive rates).

AIR DISK DRILLS SERIES 6000

The Flexi-Coil series 6000 Disk Drill enlarges the reliable family of FC Air Drills. With the **6100 Disk Drill Single Shoot** and the **6200 Disk Drill Double Shoot**, the Flexi-Coil line-up is ready for the challenging conditions of today agriculture.

Series 6000 Disk Drills are versatile and reliable seeding tools to help you seed a large variety of crops, keeping in mind consistent agronomic and economic results.

Depending on your seeding style, you can choose between two models in order to best fit your necessity concerning fertilizing during the seeding operations.

You will be very pleased with the precise seeding depth you can reach

and keep with the true parallel link system, standard on our drills.

Series 6000 Disk drills are the perfect match for our Air Cart 60 series, which means you have full sectional control (manual as a standard or fully automatic as an option) in order to exclude expensive overlaps when seeding: no overlaps mean consistent population, better agronomics, less expenses and better yields.

Also, the metering system of 60 series Air cart delivers very precise seeds and fertilizers rates. Put in the field what you want and how much you want at the right place.

Due to the agronomic design, series 6000 Disk Drills fit in any cropping system, starting from conventional patterns, through conservative, minimum tillage and no tillage systems. Make every seed and every grain of fertilizer count.



6100 AIR DISK DRILL SINGLE SHOOT

The 6100 disk drill comes with four sizes (30, 40, 50 and 60 feet – 9,14 - 12,19 - 15,24 and 18,29 m) and two spacings (7.5 and 10 in – 190 and 254 mm) available, thus suiting different acreages and different crops. With simple split inserts, it is possible to double the spacing from 7.5 to 15 in (from 19 to 38 cm), to better suit beans crops.

The floating hitch allows for free copying of soil, independently from the tractor position.

The rugged “V” pulling frame adds strength and stability to the implement in field as well as road conditions. As tradition at Flexi-Coil, wings are flexible.

The high floatation tire package increases the working windows during the season and decreases soil compaction and rutting.

The patented true parallel linkage, mounted between the rows units and the drill frame, delivers

unmatched copying capabilities, for an outstanding soil following and thus a consistent seeding depth along the whole width of the drill.

The row unit has a large cutting disk and a reliable gauge wheel, for operation in all kind of soils and residues. The unique down pressure spring keeps the row unit into the soil, and together with the hydraulic down pressure cylinders (adjustable from the cab) assures a constant row to soil contact.

A convenient “T” handle on each row is used for quick depth adjustment of single row unit.

The heavy duty, smooth faced concave 4 in (102 mm) by 12 in (305 mm) packer wheel was designed specifically for closing in tough conditions — whether in clay, sandy or both types of soils. The double-edged closing wheel follows behind, to seal the row effectively in a variety of conditions: the closing wheel is also adjustable on 3 positions, delivering different down pressures.



**6200 AIR DISK DRILL
DOUBLE SHOOT**

The 6200 disk drill comes with four sizes (30, 40, 50 and 60 feet – 9,14 - 12,19 - 15,24 and 18,29 cm) and one spacing (10 in – 25.4 cm) available, for suiting different acreages and different crops.

The floating hitch allows for free copying of soil, independently from the tractor position.

The rugged “V” pulling frame adds strength and stability to the implement in field as well as road conditions. As tradition at Flexi-Coil, wings are flexible.

The high floatation tire package increases the working windows during

the season and decreases compaction.

The patented true parallel link between the rows units and the frame delivers unmatched copying capabilities, for an outstanding soil following and thus a consistent seeding depth.

The Double Shoot row unit has a large cutting disk and a reliable gauge wheel, for operation in all kind of soils and residues. Fertilizer is applied through a tube beside the cutting disk, excluding any damage to seeds from Nitrogen.

The seed knife is cast using unique metal chemistry and a carbide edge for durability and extended wear. In addition, the knife is cushioned and rubber shock isolated to prevent damage from impacts and it is easy



to replace when needed.

The unique down pressure spring keeps the row unit into the soil, and together with the hydraulic down pressure cylinders (adjustable from the cab) assures a constant row to soil contact.

A convenient "T" handle on each row is used for quick depth adjustment, and the closing wheel is also adjustable on 3 positions, depending on soil conditions.

Optimal seed to soil contact results in early emergence: a new treaded packing wheel catches and gathers soil to smoothly close the trench, for excellent seed-to-soil contact and better emergence. The textured wheel surface profile creates a soil crease for controlled soil cracking against crusting.



AIR CART SPECIFICATIONS (METRIC SHOWN IN BRACKETS)

Model	3560	4460	4660	5560	5860	7660	9560
Capacities							
Total	350 bu (12,234 L)	435 bu (15,329 L)	460 bu (16,210 L)	555 bu (19,558 L)	580 bu (20,439 L)	760 bu (26,782 L)	950 bu (33,477 L)
Tanks	2	3	4	3	4	4	4
Bin split (bu)	160/190	140/105/190	140/105/190	190/105/260	190/105/260	230/170/325	325/170/420
Bin split (L)	5638/6695	4933/3700/6695	4933/3700/6695	6695/3700/9162	6695/3700/9162	8105/5991/11453	11453/5991/14800
Small seeds tank capacity	NA	NA	25 bu (881 L)	NA	25 bu (881 L)	35 bu (1233 L)	35 bu (1233 L)
Dimensions							
Height	189 " (4.79 m)	186 " (4.73 m)	186 " (4.73 m)	188 " (4.78 m)	188 " (4.78 m)	210 " (5.34 m)	210 " (5.34 m)
Height (with handrails down)	154 " (3.90 m)	154 " (3.90 m)	154 " (3.90 m)	160 " (4.05 m)	160 " (4.05 m)	188 " (4.76 m)	188 " (4.76 m)
Width	166 " (4.21 m)	221 " (5.62 m)	221 " (5.62 m)	221 " (5.62 m)	221 " (5.62 m)	233 " (5.90 m)	254 " (6.45 m)
Tow-behind weight	14,351 lb (6,510 kg)	16,330 lb (7,407 kg)	17,622 lb (7,993 kg)	18,289 lb (8,313 kg)	19,620 lb (8,899 kg)	21,494 lb (9,750 kg)	31,438 lb (14,260 kg)
Filling system							
Main tank	NA	Deluxe 10 " auger		Fast fill conveyor with remote control			
Small seeds tank	NA	NA	Pneumatic	NA	Pneumatic	Pneumatic	Pneumatic
Product delivery							
Product delivery	Type B system – primary division at meter and secondary division on seeding implement						
Meter drive system	FlexRate Modular Metering System / Multi segment variable rate metering						
Fan system	Standard with two single fans for double-shoot						
Sectional Control	Optional 10 run / expandable up to 12 run or wide body carts						

ST820 PRECISION TILLAGE (METRIC SHOWN IN BRACKETS)

3-Section Base Models	25 ft (7.6 m)	31 ft (9.5 m)	34 ft (10.4 m)	37 ft (11.3 m)	40 ft (12.2 m)
Dimensions - Transport					
Length	25 ft 4 in (7.7 m)	25 ft 4 in (7.7 m)	26 ft 2 in (8.0 m)	25 ft 4 in (7.7 m)	26 ft 2 in (8.0 m)
Height	11 ft 6 in (3.5 m)	14 ft 3 in (4.3 m)	14 ft 3 in (4.3 m)	17 ft (5.2 m)	17 ft (5.2 m)
Width	18 ft 8 in (5.7 m)	18 ft 8 in (5.7 m)	21 ft 8 in (6.6 m)	18 ft 8 in (5.7 m)	21 ft 8 in (6.6 m)
Weight*	5390 kg (11,883 lb)	5977 kg (13,17 lb)	6,274 kg (13,832 lb)	6,825 kg (15,047 lb)	7,141 kg (15,743 lb)
Number of Shanks - Spacing					
7.2 in (18.3 cm)	43, 47	53, 57	58, 62	63	68
9 in./ 9 in. alternate (22.9 cm)	35, 37, 39	43, 45, 47, 45	47, 49, 51	51, 53, 55	55, 57, 59
12 in (30.5 cm)	27, 29	33, 35	36, 38	39, 41	42, 44
Tyres					
Wings (all tyres)	9.5Lx15(D)	9.5Lx15(D)	9.5Lx15(D)	9.5Lx15(D)	9.5Lx15(D)
Centre Section: Castors	9.5Lx15(D)	9.5Lx15(D)	9.5Lx15(D)	9.5Lx15(D)	9.5Lx15(D)
Walk beam	11Lx15(D)	11Lx15(D)	11Lx15(D)	11Lx15(F)	11Lx15(F)

5-Section Base Models	43 ft (13.1 m)	46 ft (14.0 m)	52 ft (15.8 m)	58 ft (17.7 m)
Dimensions - Transport				
Length	25 ft 4 in (7.7 m)	26 ft 2 in (8.0 m)	26 ft 2 in (8.0 m)	26 ft 2 in (8.0 m)
Height	13 ft 10 in (4.2 m)	13 ft 10 in (4.2 m)	16 ft 10 in (5.1 m)	16 ft 10 in (5.1 m)
Width	18 ft 8 in (5.7 m)	21 ft 8 in (6.6 m)	21 ft 8 in (6.6 m)	21 ft 8 in (6.6 m)
Weight*	8,430 kg (18,585 lb)	8,768 kg (19,330 lb)	9,574 kg (21,107 lb)	10,200 kg (22,487 lb)
Number of Shanks - Spacing				
7.2 in (18.3 cm)	73, 77	78, 82	88, 92	98, 102
9 in./ 9 in. alternate (22.9 cm)	59, 61, 63	63, 65, 67	71, 73, 75	79, 81, 83
12 in (30.5 cm)	45, 47	48, 50	54, 56	60, 62
Tyres				
Wings (all tyres)	9.5Lx15(D)	9.5Lx15(D)	9.5Lx15(D)	9.5Lx15(D)
Centre Section: Castors	9.5Lx15(D)	9.5Lx15(D)	9.5Lx15(D)	9.5Lx15(D)
Walk beam	235/75 R17.5	235/75 R17.5	235/75 R17.5	235/75 R17.5

All models

Sizes available	
	25 to 62 feet (7.6 to 18.9 m)
	The ST820 can be configured for widths from 25 to 62 feet, depending on row spacing, trip break out.
Trips & Shanks	
	350 lb, 1" x 2", 1 3/4" bolt spacing fit 470 sweeps on 7.2", 9" spacings
	550 lb, 1" x 2", 2 1/4" bolt spacings fit 500 sweeps on 7.2", 9" or 12" spacings
	650 lb, 1 1/4" x 2", 2 1/4" bolt spacing fit 500 sweeps on 12" spacing
Options	
	Mounted 3 bar harrows
	Work switch for air cart
	Mounted press wheels
	Air Package - single or double shoot (tow between or tow behind)
	Mounted 4 bar harrows
	End marker (single or dual up to 46')
	Trip shim kit
	Rear hitch for towing implement
	Mud scrapers
	Field Hitch Mount (For Air Cart)
	Furrow closers
Note	
	Mounted 3 bar harrows
	Work switch for air cart
	Ground engaging tools are required for operation and are not included in specs

*Maximum weight (without options or ground engaging tools)

5000HD AIR DRILL SPECIFICATIONS (METRIC SHOWN IN BRACKETS)

Model Width 33 ft (10.0 m) 39 ft (11.9 m) 45 ft (13.7 m) 51 ft (15.5 m) 57 ft (17.4 m)

Dimensions - Transport					
Length	29' (8.8 m)	29' (8.8 m)	29' (8.8 m)	29' (8.8 m)	29' (8.8 m)
Height	14.5' (4.7 m)	17.5' (5.3 m)	14' (4.3 m)	17.5' (5.3 m)	17.5' (5.3 m)
Width	20.5' (6.2 m)	20.5' (6.2 m)	20.5' (6.2 m)	20.5' (6.2 m)	20.5' (6.2 m)
Number of Shanks					
10" (25.4 cm)	40	48	56	62	70
12" (30.5 cm)	34	40	46	52	58
Tires					
Dual Front Center Casters	9.5 L x15	9.5 L x15	9.5 L x15	11 L x15	11 L x15
Rear Transport Walk Beams	9.5 L x15	9.5 L x15	9.5 L x15	11 L x15	11 L x15
Wing (some sizes may have dual)	9.5 L x15	9.5 L x15	9.5 L x15	9.5 L x15	9.5 L x15

All models

Frame/Ground Clearance	
	28" to 32" (71.1 to 81.3 cm) depending on openers and depth settings
Cultivator-Style Trips	
	350 lb (160 kg) with 1 x 2 in. (2.5 x 5.1 cm) shank, 2 1/4 in. (5.7 cm) centers fit 500 sweeps
	550 lb (250 kg), 1 x 2 in. (2.5 x 5.1 cm) shank, 2 1/4 in. (5.7 cm) centers fit 500 sweeps
Press Wheels	
3 Rubber, in. (cm)	3" x 22" (7.6 x 55.9 cm)
	4" x 22" (10.2 x 55.9 cm)
	5 1/2" x 22" (14 x 55.9 cm)
Steel, in. (cm)	3 1/2" x 22" (8.9 x 55.9 cm)
	4 1/2" x 22" (11.4 x 55.9 cm)
Options	
	Shim kits to Lower Shanks behind tractor wheels
	Single or dual end markers
	Press wheel mud scrapers
Note	
	Ground engaging tools are required for operation and are not included in specs. Every effort has been made to produce these specifications with the most current information available. However, ongoing product development and improvements mean that equipment and specifications are subject to change without notice.

*Maximum weight (without options or ground engaging tools)

5500 LARGE AIR HOE DRILL SPECIFICATIONS (METRIC SHOWN IN BRACKETS)

Models	5500 60'	5500 70'	5500 80'
Base size: ft.(m)	60'(18,28)	70' (21,33 m)	80' (24,38 m)
No of sections	5		
No. Of ranks	4		
Shank spacing: in. (cm)	10" (25,4)/12" (30,5)		
Number of shanks			
10" (25,4 cm) Spacing	72	84	96
12" (30,5 cm) Spacing	60	70	80
Frame widths			
Main frame ft. (m)	10' (3,1 m)		
Inner wing ft. (m)	15' (4,57 m)		
Outer wing ft. (m)	10' (3,1 m)	15' (4,57 m)	20' (6,1 m)
Transport width ft. in. (m)	17'8" (5,4 m)		
Transport Height max ft.in. (m)	13' 6" (4,1 m)		
Weights with 350 lbs trips and 3 in. Rubber packers			
10" (25,4 cm) Spacing	32,500 lbs (14.742 kg)	36,000 lbs (16.329 kg)	41,000 lbs (18.957 kg)
12" (30,5 cm) Spacing	31,500 lbs (14.300 kg)	33,500 lbs (15.195 kg)	38,500 lbs (17.463 kg)
Tyres			
Main frame Castors	11L x 15 (Dual)		
Inner wing Castors	11L x 15 (Dual)		
Outer wing Castors	11L x 15 (Dual)		
Rear transport wheels	11L x 15FI (Single)		
Presswheel Options			
10" and 12" Spacing	Rubber wheels 3-4-5.5 in (7,6-10,16-14 cm). Steel wheels 3.5-4.5 in, (7,6-10 cm)		
	Pneumatic wheels		
Press Wheel Mud Scrapers	Optional for steel and rubber wheels		
Stone Kickers	Standard		
Openers	Wide range of double and single shoot openers Stealth		
Disc levellers	Optional (2 ranks)		
Trip assemblies: 10" or 12"	350 lbs (159 kg) and 550 lbs (249 kg)		
Shanks, in. (cm)	1 (2,5) x 2 (5,0) 50° C shanks		
Rank to rank spacing, in. (cm)	26" (66)		
Frame depth, in. (cm)	108" (274)		
Castor to packers depth, in. (cm)	148" (376) at 1" (2,5) seeding depth		
Frame to ground clearance, in. (cm)	28" (71) to 32" (81) depending on openers		
Hydraulic system	High quality parallel cylinders performing both depth and wing lift functions		
Depth control	Each wing follows ground independently, not affecting adjacent sections. Independently controlled hydraulically with single point adjustment.		

6100 AIR DISK DRILL SINGLE SHOOT SPECIFICATIONS

(METRIC SHOWN IN BRACKETS)

Models	6100	6100	6100	6100
Size: ft (m)	30 (9.14)	40 (12.19 m)	50 (15.24)	60 (18.29)
Configuration				
Tank style	Tow behind or tow between air cart			
Row spacing	10 in (25.4 cm) or 7.5 in (19.05 cm) - welded on mounts			
Number of row units	36/48	48/64	60/80	72/96
Frame				
Weight	7.5 in - (8,900 kg) - 10 in – (7,900 kg)	7.5 in - (11,250 kg) - 10 in - (10,000 kg)	7.5 in - (18,143 kg) - 10 in - (16,601 kg)	7.5 in - (20,639 kg) - 10 in – (18,824 kg)
Fold type	Single fold		Double fold	
Wing flex	3 section flex (10 degree down & 15 degree up		5 section flex (10 degree down & 15 degree up)	
Hitch	Floating hitch			

Transport height	13.1 ft (3.99 m)	13.8 ft (4.20 m)	13.2 ft (4.02 m)	14.9 ft (4.54 m)
Transport width	12 ft (3.65 m)		18.8 ft (5.73 m)	
Tyre package high floatation	Quantity: 16 total wheels Front of mainframe - 12.5 L x 15 dual wheels on castoring walking beam axles Front and rear on wings - 12.5 L x 15 dual wheels on walking beam axles (front on castor) Rear of main frame - 18 L x 16.1 dual wheels on walking beam axles		Quantity: 24 total wheels Walking tandem 12.5 L x 15 on inner and outer wings Walking tandem 16.5 x 16.1 on centre section	
Single shoot row unit/opener				
Minimum Hp engine requirement**	4,5 – 5 Hp per opener			
Operating speed	8 – 12,7 km per hour			
Depth adjustment	Per opener 0 - 3.5 in (0 - 9 cm): 14 increments with single “T” handle			
Row unit vertical travel from surface	8.5 in (21.6 cm) up, 11.5 in (29.2 cm) down			
Road to opener clearance	8.5 in (21.6 cm) up			
Row unit spring down pressure	160 - 400 lb (73 - 181 kg)			
Rank down pressure	Single point hydraulic in cab adjustment 200-1.400 psi (13,6 – 95 Atm)			
Opening disk	18 in (45.72 cm) single bevel at 7 degrees			
Closing system	Double edge, single wheel			
Closing system pressure	3 settings 59, 71, 84 lb - (27, 32, 38 kgs)			
Linkage	True parallel linkage with two arms			

**Additional horsepower is required to tow and operate the air cart. Minimum requirements are a starting point and should be based on operating conditions in the field, road transport conditions, and other implements that are used with the 6100 Precision Disc Drill.

SPECIFICATIONS FC 6200 DOUBLE SHOOT DISK DRILL

Working width, ft (meters)	30' (9,14 m)	40' (12,19 m)	50' (15,24 m)	60' (18,29 m)
Configuration				
Air Cart	Tow Between or Tow Behind			
Spacing	10 in (25.4 cm)			
Pneumatic system	Standard double shoot air package or extended wear double shoot air package			
Row unit, number	36	48	60	72
Frame				
Weight, kg	5.533	13.199	18.824	20.411
Folding system	Single fold on central section, 3 sections		Double fold on central section, 5 sections	
Wings	Flexible, 10°up, 15° down			
Hitch	Floating hitch			
Transport height, ft (meters)	13.1 (3,99)	13.8 (4,20)	13.2 (4,02)	14.9 (4,54)
Transport width, ft (meters)	12 (3,65 m)		18 (5,48m)	
Tires, standard equipment	Total 12 tires. Frontal central frame 12.5L x 15 Duals. Front and rear wings 12.5L x 15, Singles. Rear central frame 18L x 16.1 Duals		Total 20 tires. Single tires 12.5L x 15D on each wings. Duals 12.5L x 15D on internal wings. 16.5 x 16.1 Duals on central frame	
Tires, high floatation option	Total 16 tires. Frontal central frame 12.5L x 15 Duals. Front and rear wings 12.5L x 15, Duals. Rear central frame 18L x 16.1 Duals		Total 24 tires. Duals tires 12.5L x 15D on each wings. Duals 16.5L x 16.1 on internal wings. Rear central frame 18L x 16.1 Duals	
Double shoot row unit				
Linkage	True parallel linkage with two arms			
Depth control	-shaped handle on each row unit, from 0 to -5 cm, 14 positions			
Power requirements**	6-7 HP engine per row unit			
Working speed	From 8 to 14 km per hour			
Vertical row unit travel	21,6 cm up and 29,2 cm down, total 50,8 cm			
Down pressure spring force	from 73 to 181,5 kg			
Hydraulic added down force	From 14 bars to 95 bars, adjustment from tractor cab			
Cutting disk	Diameter 18 in (45,72 cm), one bevel, angle 7° , Earth Metal™			
Road clearance	21,6 cm			
Seed opener	Precision Placement Knife™, cast, with carbide leading edge			
Firming wheel				
Firming wheel	Concave profile chevron patterned firming wheel			
Firming wheel down force	27, 32, 38 kg			
Seed flow blockage monitoring				
WFBM, optional	Wireless Flow Blockage Monitoring			

** Operation and pulling of air cart require added power. Power requirements are a starting point and must be corrected on the base of field and road conditions.

New Holland.
A real specialist in your agricultural business.



AT YOUR OWN DEALER



Visit our website: www.newholland.com
Send us an e-mail: international@newholland.com



The data indicated in this folder are approximate. The models described here can be subjected to modifications without any notice by the manufacturer. The drawings and photos may refer to equipment that is either optional or intended for other countries. Please apply to our Sales Network for any further information. Published by CNHI INTERNATIONAL SA. Brand Marketing and Communication. - creative-farm.it - 04/19 - **AMEA19702F/INB**