

W170_c W190_c



	W170C	W190C
BUCKET VOLUME	2.7 - 6.0 m ³	3.1 - 7.0 m ³
BUCKET PAYLOAD	5.0 ton	6.4 ton
PRODUCTIVITY (50 m DISTANCE)	280 t/h	320 t/h
OPERATING WEIGHT	14.5 ton	18.3 ton
PEAK GROSS POWER	195 hp	230 hp



BUILT AROUND YOU

AS LONG AS MAN SHAPES MATERIAL

MORE PRODUCTIVITY

**REDUCED COST OF
OWNERSHIP**



S, WE WILL PROVIDE THE TOOLS.

**MORE COMFORT AND
EASE OF USE**

**A COMMITTED
PARTNER**

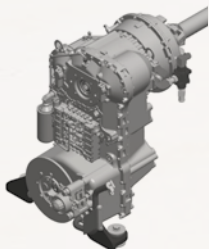


THE MAIN COMPONENTS OF OUR W



1

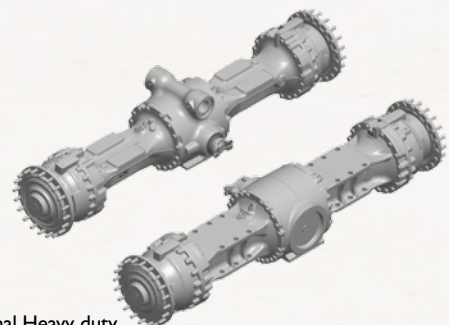
THE ECOSHIFT TRANSMISSION



Type: ZF Power-Shift countershaft design with four forward and three reverse speeds. Ecoshift uses engine de-rating to make each gearshift smoother and to optimize the pushing power of the torque converter.

2

LIMITED SLIP DIFFERENTIALS STANDARD*



*optional Heavy duty axles with 100% front lock available as a factory option

HEEL LOADER



3

THE COOLING BOX



Most wheel loaders mount their radiators back to back. At New Holland we have mounted them to form a cooling module like a box. The benefit is better cooling, in the harshest of environments. In addition, with a programmable reversing fan as standard, cleaning radiators will become a thing of the past.

4

REAR MOUNTED ENGINE WITH SCR ONLY TECHNOLOGY



AdBlue

The rear mounted engine results in less weight and less stress on the machine. SCR is a well-proven and reliable technology used on trucks in Europe since 2004. Since this solution does not affect combustion and it offers more power with less fuel. SCR ONLY technology doesn't require a particulate filter.

MORE PRODUCTIVITY



THE BIGGEST PAYLOAD

We designed our wheel loaders to give you the biggest bucket payload in the industry so that you can get the job done with fewer loading cycles: with just 3 passes the W170C will load a 15-tonnes payload truck respectively.



PRODUCTIVITY-BOOSTING BUCKETS

Our flat bottom buckets make all the difference. They have a better penetration in the pile and superior material retention. Their shape allows for a better roll back of the material inside the bucket, so once it's in, it stays in and you will get the job done with fewer trips.





OUTSTANDING GRIP AND RELIABILITY

Limited slip differential front & rear. When one wheel slips 73% of the available axle torque is guaranteed on the other wheel.

Note: Auto lock differential is available as a factory option.



SHORTER V-CYCLE DISTANCE

The lifting of the loader arm is faster, so you can do a V-cycle at full speed with the pick up point just 10 meters from the truck you are loading.



REDUCED COST OF OWNERSHIP



SAVE FUEL WITH LOWER ENGINE RPM

With ECOSHIFT transmission you can work at lower rpm and save fuel.

SAVE FUEL WITH SMOOTHER GEAR SHIFTS

ECOSHIFT makes gear shifts very fast (8/10th second) and smooth by optimizing the gear shift depending on the working mode that you have selected. This results in fuel saving, better material retention and great comfort.

CUT FUEL WASTE WITH ECOSTOP

ECOSTOP automatically shuts down the engine and the electric system after 5 minutes of idling, so there is no waste of fuel.

LESS FUEL WITH BETTER COMBUSTION

With SCR technology engine combustion is optimised for efficiency: it only uses fresh air and occurs at optimum temperature, guaranteeing the best engine output for power and fuel efficiency.



LESS MAINTENANCE WITH NO PARTICULATE FILTER

With our AdBlue technology, we don't need a particulate filter, so you make significant saving on the maintenance. It also means that the temperature in the engine compartment is lower, which means a longer life for the rubber parts and lower cooling needs than other Tier 4 solutions. The smaller fans in our wheel loaders mean you use less fuel. In addition you do not require a costly specific oil and no other tier 4i solution offer such a high fuel compatibility.

LESS MAINTENANCE WITH THE COOLING BOX

We designed our cooling system to maximise its efficiency, making a box of the radiators rather than following the traditional approach of having them overlap. Our design significantly improves the cooling performance, lengthening the life of the oil by 50%. The better quality of the oil also means a longer life for your wheel loader.

WELCOME ON BOARD



EXTRA WIDE ACCESS

The 4 wide steps and 2 handles make it easy for you to reach the cab; the wide door with no obstacles makes it easy to gain access.

OUTSTANDING VISIBILITY

You can work fast and confidently with excellent all-round visibility, further enhanced by the curved shape of the rear hood, which is very low due to the small cooling package.

SUPERIOR AIR VENTILATION

You can work in comfort with the efficient ventilation ensured by 16 air vents and the optional air conditioning system. In addition, the doors open 180° and can be easily locked in open position or unlocked from the driver's seat



OPERATOR SAFETY AND LOW VIBRATIONS

You will enjoy the protection of our reinforced cab, which guarantees protection against roll over (ROPS) and falling objects (FOPS). We placed the engine at the back of the machine, far from the cab, so that you will feel lower vibrations in the cab. Moreover the ECOSHIFT transmission electronically optimises gear shifts according to the working mode you select, ensuring smooth shifting, so you can work comfortably.

SITTING COMFORTABLY WITH CONTROLS AT YOUR FINGERTIPS

You will enjoy the comfort of the heated seat with high vibration absorption. You can focus entirely on the job at hand and work comfortably with the steering knob, the joystick or the 2-lever control with the reverse button under your thumb. The control panel is positioned ergonomically under your right hand. The overhead radio positioning and ample storage add up to great convenience for you.

EASY OPERATING

For more comfort and productivity during repetitive activities the following functions, which can be activated or de-activated according to your preferences, will free your right hand for steering:

Auto-lift: automatically lifts the boom to the max height or to the height you have set

Reverse button: allows you to use your left hand for steering and activate reverse speed from the joystick with your right hand

Return to dig: automatically brings back the bucket in the right position for loading again

Return to travel: automatically lowers the boom to carry position; it can be adjusted according to your tyres and bucket

Auto-shift: ensures the machine always operates in the most suitable gear according to speed, kick down and engine braking

Auto-Glide Ride: reduces loader arm bounce during travel, maintaining maximum material retention on all surfaces.

It's activated from 7 km/h

A COMMITTED PARTNER



REDUCTION IN CARBON FOOTPRINT

New Holland has a long history of designing products with emissions levels well below regulatory levels.

- **Low emissions**

Our AdBlue technology, developed to meet Tier 4 regulations, not only dramatically reduces emissions levels, but also achieves exceptional fuel efficiency, which further reduces the environmental impact of the machine.

- **Low impact**

The AdBlue additive is a solution of urea and demineralised water: clean, harmless and environmentally friendly.

- **Low fuel consumption**

Our ECOSHIFT transmission features a 4th speed, so that the machine can work at lower rpm and save fuel, reducing its impact on the environment.

- **Yes to biodiesel!**

All Tier 4 interim compliant products which use our AdBlue technology can use blends of 20% biodiesel.

LEADER IN SUSTAINABILITY

New Holland's extensive offering of low emission products, our continued focus on reducing our environmental footprint throughout our products' entire life cycle and our involvement in the community have contributed to our parent company, CNH Industrial, being recognised as Industry Leader by the Dow Jones Sustainability Index (DJSI) World and DJSI Europe. These prestigious equity indexes only admit companies that are best-in-class in managing their businesses, from an economic as well as social and environmental perspective. CNH Industrial received a score of 81/100 compared to an average of 49/100 for all companies in its sector, and was awarded first place.



EASY MAINTENANCE FROM GROUND LEVEL

- **Designed for easy access**

The one-piece electric hood, with alternative opening solution, makes it very quick and easy to access all the service points. We positioned the engine at the rear to give you full access to the engine compartment from the ground.

- **Designed for fast servicing**

We grouped all the service points so you save time: the fuel and AdBlue filling points are next to each other and the 3 oil drains are close together.

- **Designed for less maintenance**

We positioned the radiators at the back of the cab, which means they will need less cleaning.

- **Designed for easy cleaning**

With our cooling box design, you can clean each radiator separately, and you can activate the reversible fan from the cab.

SAFETY FIRST

- **Designed for safe operation**

You can work with confidence knowing that in our cabs you are protected from roll over and falling objects. Our cabs are all ROPS and FOPS certified.

The outstanding all round visibility means that you have a full view of the bucket and all the area around the machine.

- **Designed for safe maintenance**

We designed our wheel loaders so that all the main service points are easily accessible from the ground, so you can safely carry out your daily maintenance.

SERVICE PLUS





THE NEW HOLLAND DEALER: YOUR PROFESSIONAL PARTNER

Your success starts with world-class New Holland machinery and attachments. Your New Holland dealer will help you work smarter and faster by selecting equipment that delivers performance and operator comfort. Your dealer has the knowledge and experience necessary to help you choose the right attachments so you can...

- **Work faster and extend equipment life.**
- **Increase machine utilization.**
- **Increase your capabilities.**

Let your New Holland dealer service your machine on the jobsite. You'll be back on the job faster. Advantages include...

- **Responsive job site service to keep your equipment running.**
- **Increase machine uptime.**
- **Certified service staff and improved parts availability.**

PARTS

When you're looking for superior parts options to maximize the performance and lower the operating costs of your New Holland machinery, turn to CNH Original Parts to keep you equipped for success.

CNH Original Parts fit better, install faster and last longer and in an industry where "high impact" and "heavy lifting" are the norm, the smallest mechanical differences can lead to big problems.

CNH Original Parts from New Holland are manufactured from superior materials and specifically designed for New Holland to continually and reliably withstand the punishment of everyday construction. So steer clear of mechanical problems and future breakdowns, by choosing CNH Original Parts from New Holland. They're the only parts that are field-tested and proven to keep your New Holland equipment performing its best.

SERVICE. RELY ON NEW HOLLAND TO DELIVER FOR YOU

Your commitment to your operation is evident every day, but that doesn't minimize the enormous pressure you face to reduce operating costs and improve productivity. So when you're on the job, make sure you have top-notch service and support of New Holland behind you every step of the way. With our factory trained technicians, you can ensure that top-notch service professionals are working on your maintenance needs, so you can focus on your business and the big job challenges ahead, not on the tasks of servicing your equipment.

With your New Holland Service, you get more than mere oil changes. A New Holland Service ensures your New Holland equipment receives a thorough service that meets all requirements of its service schedules and properly maintains it for the day-in, day-out punishment of construction work.

Don't give another thought to time-consuming maintenance tasks. Simply rest easy and make certain that your service needs are taken care of by a New Holland factory trained technician.





When the unexpected occurs, you need to know your equipment is protected. At New Holland we understand the importance of your machinery being in good working order when it counts. Service Plus is designed to help keep your equipment working well beyond the manufacturer's base warranty period while taking away the concerns of the cost and inconvenience of mechanical failure.

WHAT ARE THE ADVANTAGES OF SERVICE PLUS?

PEACE OF MIND

Provides protection beyond the Manufacturer's Base Warranty Period.

FLEXIBLE OPTIONS

Plans can be customised to meet individual needs.

DEPENDABLE SERVICE

Eligible repairs completed by an authorised New Holland Dealership and their trained service technician's using genuine OEM parts & lubricants.

TRANSFERABLE PROTECTION

New Equipment Plans may be transferred to a new owner at no charge

• STANDARD PROTECTION PLAN 3 Year / 5000 Hour

Additional years/hours can be purchased. Please contact your local New Holland dealer for further information.

STANDARD SERVICE PLUS PROTECTION PLAN CONSTRUCTION EQUIPMENT MASTER PARTS SCHEDULE

This plan provides coverage for the components listed below when a failure occurs due to a defect in material or workmanship, and may provide coverage for additional components not listed when the damage is caused by or resulting from a covered failure of a listed component.

PREMIER COMPONENTS COVERED

ENGINE AND ALL INTERNAL LUBRICATED COMPONENTS WITHIN	TRANSMISSIONS/AXLES/HYDROSTATICS	ELECTRICAL	HYDRAULICS
Accessory Gears	Axle Housing	Alternator	Accumulator And Related Relief Valve
Air Intake Hose	Axle Shaft	Gauges	Brake Accumulator
Camshaft	Clutch Discs (Wet Only)	Horn	Brake Pressure Sensor
Camshaft Bearings	Clutch Plates (Wet Only)	Indicators	Brake Pump, Brake Valve
Camshaft Drive Gear	Control Rods	Instruments	Differential Lock Valve
Catalytic Converter	Counter Shaft Clutch	Electronic Joysticks	Fan Pumps And Motors
Charge Air Cooler	Differential Housing	Electric Motors	Hydraulic Cylinders
Cold Start Enrichment Systems	Differential Pinion Gear / Ring Gear	Factory Installed Telematics	Hydraulic Hoses and Piping
Connecting Rods & Bearings	Drive Axle Hub	Sensors	Hydraulic Motors
Crankshaft Bearings & Gear	Drive Shaft Support Bearing	Solenoid Valves	Hydraulic Oil Coolers
Crankshaft Including Front And Rear Crankshaft Seals	Drive Shaft with Universal Joints	Starter And Starter Solenoid	Hydraulic Pumps
Cylinder Heads/ Head Gaskets	Electronic Transmission Controller and Valve	Switches	Hydraulic Reservoir
Cylinder Liners	Enclosed Oil Immersed Chains and Sprockets	Traction Control System	Hydraulic Valves
Diesel Exhaust Fluid Tank and Dispensing System	External Oil Lines	Voltage Regulator	Internal O-Rings and Bonded Washers
Diesel Particulate Filter	Filler Tubes (Transmission)	Wiring Harnesses	Pilot Control
EGR System Manifold	Final Drive Pinion	Wiring Harnesses Exclusions	Pressure Reducing Valves
Electronic Engine Control Module	Final Drive Planetary Gears	Rubbing, Chafing, Loose Or Corroded Connections	Unloading Valves
Engine Block	Front Wheel Drive Sensors	FACTORY INSTALLED HEAT AND AIR CONDITIONING	STRUCTURAL
Engine Mounts And Supports	Hydraulic Drive / Travel Motor	Accumulator	Backhoe Booms
Engine Oil Cooler	Hydraulic Drive Pump	Clutch	Backhoe/Excavator Dipper Sticks
Engine Speed Controls, Linkages, and Cables	Hydraulic Transmission-Control Valve	Compressor	C Frame
Exhaust Manifold and Muffler	Hydrostatic Motor	Condenser	Car Body
Fan And Fan Drive	Hydrostatic Transmission Charge Pump	Dryer	Chassis
Filter Mount	Hydrostatic Transmission Pump	Evaporator	Circle Frame
Flywheel, Ring Gear	Hydrostatic/Hydraulic Pump Drives	Expansion Valve	Engine Frame
Front And Rear Engine Covers And Seals	Internal Lubricated Clutch Housings	Heater Core	Equipment Frame
Front Damper	Internal Transmission Control Linkage	Hoses	Excavator Booms
Fuel Lines	Internal Wet Service Brakes	Pulley	Falling Object Protection Structure (FOPS)
Fuel Tank	MFWD Axle/Differential Assembly including Driveshaft and U Joint	Seals & Gaskets	Forklift Masts
Fuel Transfer Pump & Gasket	Planetary Gear Carrier	Temperature Control Programmers and Valves	Inner and Outer Dipper Arms of the Extendable Boom (Backhoe Loader)
Injection Pump	Pneumatic Valves	OPERATOR AREA	Main Frame
Injectors	Rotary Hydraulic Manifold	Covers and Panels	Rollover Protection Structure (ROPS)
Intake and Exhaust Manifold And Gaskets	Splitter Drive/Drop Box	Exterior/Interior Door/Panel Latches, Hinges & Struts	Swing Frame
Oil Filler Tube	Steering Clutches (Wet)	Exterior/Interior Moldings	Swing Tower Castings (Backhoe Loader)
Oil Lines	Swing Motor And Swing Gear Box	Knobs for Switches and Handles	Track Frame
Oil Pan And Gasket	Torque Converter	Mirrors	Wheel Loader/Skid steer Loader Arms
Oil Pump	Torque Converter Pump	Seat Frame & Suspension	
Pistons & Rings	Transfer Drive		
Pre-Cleaner/Air Cleaner Housing	Transmission Case		
Pressure/Temperature Sensors & Sending Units	Transmission Gears, Bearings, & Shafts		
Pulleys	Transmission Pump		
Radiator	Travel & Swing Sections (only) Of Main Control Valve		
Rocker Arm Assembly	Travel Control Valve		
Selective Catalytic Reduction System	Turntable Bearing		
Thermostats	Undercarriage Roller And Idler Seals And Bearings		
Timing Gears	Undercarriage Tensioners		
Turbocharger And Gasket	UNDERCARRIAGE EXCLUSIONS:		
Valve Cover And Gasket	Sprocket, Tracks, Pads, Bolts, Chains, Or Any Failure Due To Wear, Or Breakage Caused By Wear		
Water Piping			
Water Pumps			

This plan excludes coverage for any failure to any component caused by or resulting from the failure of a component not listed as a covered component, including any resulting damage to a listed component. See the Terms and Conditions document for complete plan details.

SPECIFICATIONS

PRODUCTIVITY

(50-METER DISTANCE CYCLE)

Considering: density: 1,8 t/m³, fill factor: 100%, 52 cycles/hour and each hour includes a 5-minute break..... 140 m³/h or 280 t/h
52 loading cycles/h with standard bucket 2.7 m³ or 5.4 ton

ENGINE TIER 4 INTERIM

Compliant with tier 4 interim (EU stage 3b regulations)
FPT turbocharged engine F4HFE613Y with:

- 100% fresh air combustion
 - Air to Air intercooler
 - Second generation common rail (1.600 bar)
 - Multiple injections similar to multi-jet automotive technology to achieve best in class load response, max torque and power with the minimum fuel consumption.
- 6 cylinders -6,7 liters
Max power SAE J1995 145 kW / 195 hp @1800 rpm
Maximum torque SAE J1995 950 Nm @1300 rpm
Nox emission..... 1,53 g/kWh
HC emission 0,02 g/kWh
CO emission 0,23 g/kWh
PM emission 0,0106 g/kWh

TRANSMISSION

All-wheel drive with planetary axles
kick-down function

4-speed torque converter

4-speed auto Powershift switchable to manual shifting
ZF , switchable to manual shifting
forward speeds 8-13-25-37 Km/h
reverse speeds 8-13-26 Km/h
Adjustable transmission declutch

AXLES AND DIFFERENTIAL

Excellent traction:

Limited slip differential front and rear ... when one wheel slips 73% of the available axle torque is guaranteed on the other wheel
Front..... Heavy Duty axle +(ZF type MT-L3095-II)
Rear..... standard axle (ZF type MT-L3085-II)
Rear axle total oscillation..... 24°
Auto-Lock is an option.

For outstanding traction with 50% longer maintenance intervals and 30% less tire wear

Front auto-lock differential..... 100% of available torque is always guaranteed on the wheel(s) with traction
Front and rear ZF Heavy Duty axles with Open Differential

TYRES

Tyres 20,5R25

BRAKES

Service brake Maintenance free, self-adjusting wet 4-wheel disc brakes
Area 0.39 m²/hub
Parking brake..... Disc brake on transmission activated from the cab cluster
Area 82 cm²

HYDRAULIC SYSTEM

Valves Rexroth Closed-center, Load sensing hydraulic system.
Main valve with 2 or 3 sections, depending on options
Steering The steering orbitrol hydraulically is actuated with priority valve
Type of pump..... Tandem Variable displacement pump
(206 l/min @2000 rpm)

Automatic hydraulic functions

- Bucket Return-to-dig
 - Boom Return-to-travel
 - Auto.lift (to adjustable height)
- Control type Pilot control with single joystick or two levers

CAPACITIES

Fuel tank 246 usable litres
AdBlue tank 41.3 usable litres
Cooling system 28 litres
Engine oil 15 litres
Hydraulic oil..... Tank: 91 litres, total system: 180 litres
Transmission oil 34 litres

CAB AND CONTROLS

For you safety the cab complies to:

protection against falling objects (FOPS)..... ISO EN3449
protection against roll over (ROPS) ISO EN13510

NOISE AND VIBRATION

Driving noise in dB (A) 82 to SAE J88 @ 15 meters
Interior noise..... 72 LpA as per ISO6395/6396/3744
Exterior noise..... 71 dB(A) at 15 meters as per SAE J88 SEP80
Exterior Sound Power 103 LwA according to ISO6395/6396/3744

Switchable reverse gear alarm

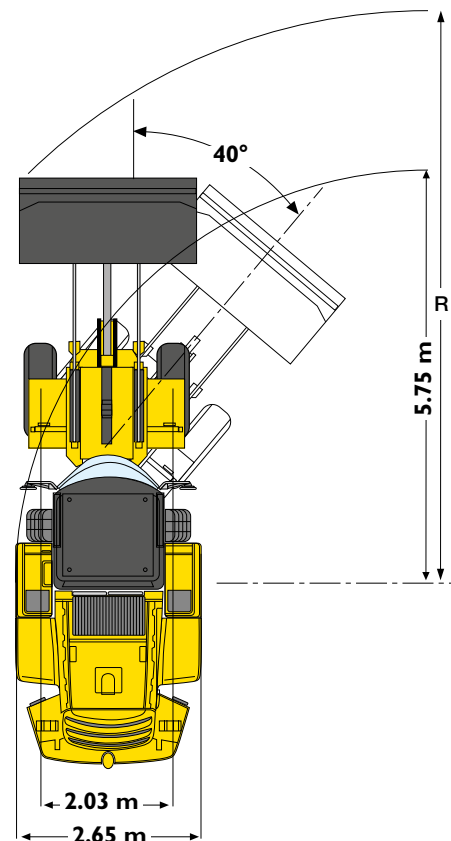
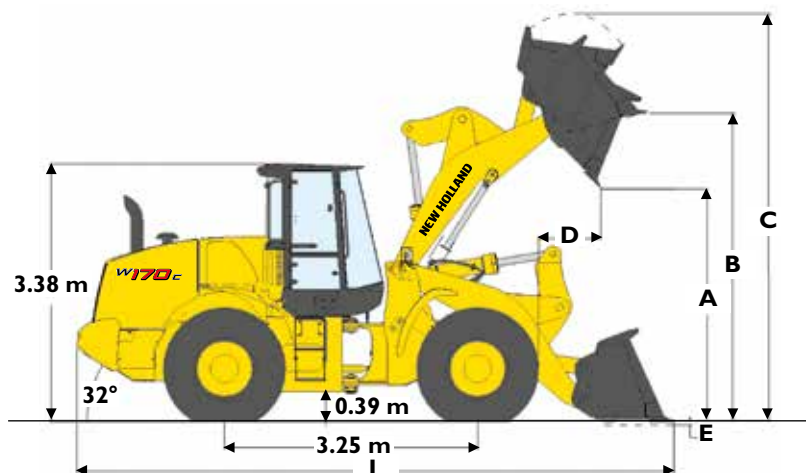
Vibrations air-cushioned seat MSG 95A/732
average 1.4m/s² as per ISO/TR 25398:2006

ELECTRICAL SYSTEM

24V. Batteries 2 x 12V.

Alternator 65 A

PERFORMANCE DATA



WI70C		Z-BAR buckets				Tool Carrier buckets	
		2.7 m ³		2.4 m ³ w/QC		2.4 m ³ w/QC	
	Bucket with bolt on:	edge	teeth	edge	teeth	edge	teeth
Bucket volume (heaped)	m ³	2.7	2.7	2.4	2.4	2.4	2.4
Bucket Payload	kg	5440	5369	5299	5325	4924	4946
Maximum material density	tonnes/m ³	2.0	2.0	2.2	2.2	2.1	2.1
Bucket outside width	m	2.73	2.73	2.47	2.47	2.47	2.47
Bucket weight	kg	1237	1344	1656	1619	1627	1590
Tipping load - straight	kg	12435	12292	11356	11405	11280	11326
Tipping load - Articulated at 40°	kg	10881	10738	10599	10649	9847	9893
Breakout force	kg	14236	12885	12185	11284	12016	11193
Lift capacity from ground	kg	13607	13480	13419	13462	13096	13111
A - Dump height at 45° at full height	m	2.93	2.86	2.82	2.74	2.77	2.69
B - Hinge pin height	m	3.98	3.98	3.98	3.98	4.16	4.16
C - Overall height	m	5.52	5.52	5.51	5.51	5.67	5.66
D - Bucket reach at full height	m	1.13	1.21	1.28	1.36	1.27	1.36
E - Dig depth	cm	43	43	38	38	58	21.3
Overall length without bucket	m	6.53	6.53	6.53	6.53	6.52	6.52
L - Overall length with bucket on the ground	m	7.65	7.76	7.83	7.95	8.12	8.24
R - Turning radius to front corner of the bucket	m	6.3	6.4	6.3	6.3	6.2	6.3
Bucket rollback in carry position	°	7.4	7.4	6.2	6.7	21	58°
Dump angle at full height	°	55°	55°	61°	61°	54°	54°
Machine operating weight	kg	14225	14532	14844	14807	14915	14878

Note: bucket specification can slightly differ according to plant source. More bucket choice is available, please contact your local dealer.

LOADER SPEED

Raising time (loaded)	sec	5.2
Dump time (loaded)	sec	1.2
Lowering time (empty, power down)	sec	2.5
Lowering time (empty, float down)	sec	2.4

SPECIFICATIONS

PRODUCTIVITY

(50-METER DISTANCE CYCLE)

Considering: density: 1,8 t/m³, fill factor: 100%, 52 cycles/hour and each hour includes a 5-minute break..... 160 m³/h or 320 t/h
52 loading cycles/h with standard bucket 3.4 m³ or 6.2 ton

ENGINE TIER 4 INTERIM

Compliant with tier 4 interim (EU stage 3b regulations)

FPT turbocharged engine FAHFE613X with:

- 100% fresh air combustion
- Air to Air intercooler
- Second generation common rail (1.600 bar)
- Multiple injections similar to multi-jet automotive technology to achieve best in class load response, max torque and power with the minimum fuel consumption.

6 cylinders -6,7 liters

Max power SAE J1995 172kW / 230 hp @1800 rpm

Maximum torque SAE J1995 1184 Nm @1300 rpm

Nox emission.....1,53 g/kWh

HC emission0,02 g/kWh

CO emission.....0,23 g/kWh

PM emission0,0106 g/kWh

TRANSMISSION

All-wheel drive with planetary axles

kick-down function

4-speed torque converter

4-speed auto Powershift switchable to manual shifting

ZF , switchable to manual shifting

forward speeds 7-12-23-37 Km/h

reverse speeds7-13-25 Km/h

Adjustable transmission declutch

AXLES AND DIFFERENTIAL

Excellent traction:

Limited slip differential front and rear ... when one wheel slips 73% of the available axle torque is guaranteed on the other wheel

Front.....Heavy Duty axle +(ZF type MT-L3095-II)

Rear.....standard axle (ZF type MT-L3085-II)

Rear axle total oscillation..... 24°

Auto-Lock is an option.

For outstanding traction with 50% longer maintenance intervals and 30% less tire wear

Front auto-lock differential.....100% of available torque is always guaranteed on the wheel(s) with traction

Front and rear ZF Heavy Duty axles with Open Differential

TYRES

Tyres 23,5R25

BRAKES

Service brakeMaintenance free, self-adjusting wet 4-wheel disc brakes

Area 0.39 m²/hub

Parking brake.....Disc brake on transmission activated from the cab cluster

Area 82 cm²

HYDRAULIC SYSTEM

Valves Rexroth Closed-center, Load sensing hydraulic system.

Main valve with 2 or 3 sections, depending on options

Steering The steering orbitrol hydraulically is actuated with priority valve

Type of pump.....Tandem Variable displacement pump (240 l/min @ 2000 rpm)

Automatic hydraulic functions

- Bucket Return-to-dig

- Boom Return-to-travel

- Auto.lift (to adjustableheight)

Control typePilot control with single joystick or two levers

CAPACITIES

Fuel tank 288 usable litres

AdBlue tank 41.3 usable litres

Cooling system30 litres

Engine oil 15 litres

Hydraulic oil..... Tank: 91 litres, total system: 180 litres

Transmission oil34 litres

CAB AND CONTROLS

For you safety the cab complies to:

protection against falling objects (FOPS).....ISO EN3449

protection against roll over (ROPS)ISO EN13510

NOISE AND VIBRATION

Driving noise in dB (A) 82 to SAE J88 @ 15 meters

Interior noise..... 72 LpA as per ISO6395/6396/3744

Exterior noise.....71 dB(A) at 15 meters as per SAE J88 SEP80

Exterior Sound Power 103 LwA according to ISO6395/6396/3744

Switchable reverse gear alarm

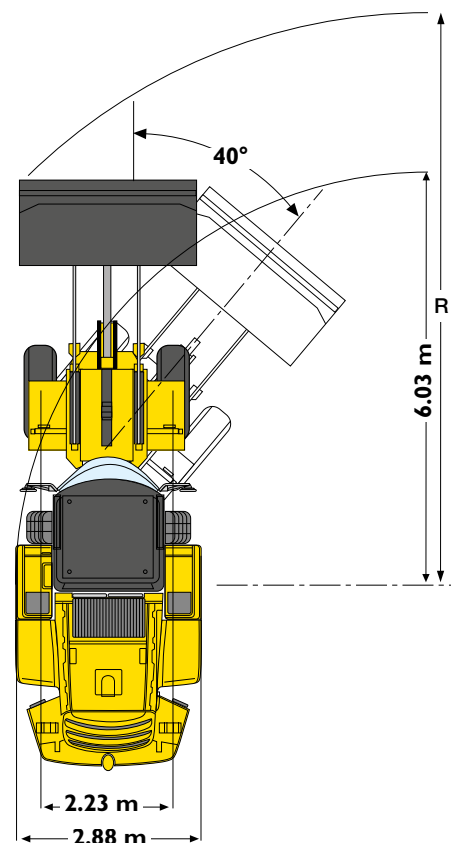
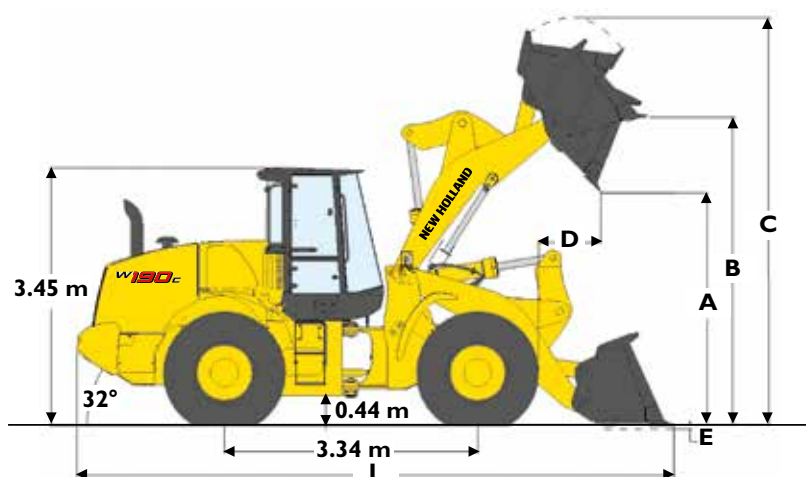
Vibrationsair-cushioned seat MSG 95A/732 average 1.4 m/s² as per ISO/TR 25398:2006

ELECTRICAL SYSTEM

24V. Batteries 2 x 12V.

Alternator 65A

PERFORMANCE DATA



W190C		Z-BAR buckets					
		3.4 m ³		3.1 m ³		2.7 m ³	
	Bucket with bolt on:	edge	teeth	edge	teeth	edge	teeth
Bucket volume (heaped)	m ³	3.42	3.24	3.20	3.10	2.8	2.5
Bucket Payload	kg	6146	6268	6184	6295	6274	6478
Maximum material density	tonnes/m ³	1.80	1.94	1.93	2.03	2.24	2.59
Bucket outside width	m	2.95	2.95	2.94	2.94	2.95	2.94
Bucket weight	kg	1550	1460	1520	1430	1366	1276
Tipping load - straight	kg	14203	14465	14284	14523	14465	14917
Tipping load - Articulated at 40°	kg	12293	12536	12367	12590	12547	12955
Breakout force	kg	15076	16133	15473	16676	17751	19180
Lift capacity from ground	kg	17976	18137	18055	18201	18263	18559
A - Dump height at 45° at full height	m	2.94	2.86	2.96	2.88	3.06	2.99
B - Hinge pin height	m	4.12	4.12	4.12	4.12	4.12	4.12
C - Overall height	m	5.49	5.49	5.45	5.45	5.29	5.29
D - Bucket reach at full height	m	1.17	1.13	1.15	1.27	1.02	1.14
E - Dig depth	cm	7	5	7	5	7	5
L - Overall length with bucket on the ground	m	7.94	8.06	7.90	8.03	7.74	7.86
Overall length without bucket	m	6.78	6.78	6.78	6.78	6.78	6.78
R - Turning radius to front corner of the bucket	m	6.7	6.6	6.6	6.6	6.6	6.6
Bucket rollback in carry position	°	44°	44°	44°	44°	44°	44°
Dump angle at full height	°	55°	55°	55°	55°	55°	55°
Machine operating weight	kg	17694	17604	17664	17574	17510	17420

Note: bucket specification can slightly differ according to plant source. More bucket choice is available, please contact your local dealer.

LOADER SPEED

Raising time (loaded)	sec	6.2
Dump time (loaded)	sec	1.2
Lowering time (empty, power down)	sec	2.9
Lowering time (empty, float down)	sec	2.5





PARTS AND SERVICE

The New Holland dealer network is, in itself, the best guarantee of continued productivity for the machines it delivers to its customers. New Holland service technicians are fully equipped to resolve all maintenance and repair issues, with each and every service point providing the high standards they are obliged to observe under New Holland's stringent quality guidelines. The New Holland global parts network ensures fast, reliable, replacement parts for less downtime, increased productivity and, of course, profitable operation for its customers.



AT YOUR OWN DEALERSHIP

The information contained in this brochure is intended to be of general nature only. The NEW HOLLAND CONSTRUCTION MACHINERY S.p.A. company may at any time and from time to time, for technical or other necessary reasons, modify any of the details or specifications of the product described in this brochure. Illustrations do not necessarily show products in standard conditions. The dimensions, weights and capacities shown herein, as well as any conversion data used, are approximate only and are subject to variations within normal manufacturing techniques.

Printed in Australia - MediaCross Firenze - Cod ANZ3402NCGB - Printed 12/13

Printed on recycled paper
CoC-FSC 000010 CQ Mixed sources



ELEMENTAL
CHLORINE
FREE
GUARANTEED



www.newholland.com

